



**McGAUGHY'S**  
S U S P E N S I O N   P A R T S

559-226-8196  
4603 E. VINE AVE  
FRESNO, CA 93725  
[www.mcgaughys.com](http://www.mcgaughys.com)

**#54322 10" LIFT KIT (4-LINK)**  
**2014-18 DODGE RAM 2500**

## STOP! READ THIS FIRST!

Before moving forward with installation, please layout all parts to ensure that nothing is missing. If there are any missing parts, please contact McGaughy's Suspension immediately at 559-226-8196.

- \*This kit does not include shocks. Front and rear shocks will be needed.
- \*The factory wheels and tires WILL fit on the vehicle, if they are 18" or larger.
- \*If any parts are ground on or modified in any way, then no returns will be accepted.
- \*NO welding is required to install any part on this kit. DO NOT weld any components.
- \*Oversized tires and heavier rims can cause premature wear on ball-joints, tie-rod ends, idler arm, etc... You may need to replace components sooner than factory recommendations based on the tires and rims you install.



**Kit Includes:**

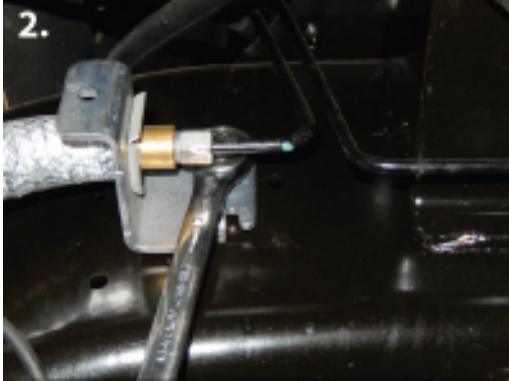
- Front & Rear Coil Springs
- Front & Rear Sway Bar End Links
- Front Track Bar Bracket
- Drop Pitman Arm
- Front Bump Stop Extensions
- Front & Rear Brake Line Brackets
- Front & Rear Driveline Spacer
- Transfer Case Re-Clocking Ring
- Transmission Crossmember
- Rear 4-Link Drop Down Brackets
- Rear Lower Link Reinforcement Arms
- Rear Coil Spacers
- Rear Track Bar Bracket
- Rear Track Bar Bracket Braces
- Front 4-Link Arms
- Front 4-Link Brackets
- Billet Face Plates for 4-Link

# FRONT INSTALLATION

Before starting this installation, we recommend loosening the factory front shocks with the vehicle on the ground. Once the vehicle is in the air, it is extremely difficult to access the upper shock nuts and they have a significant amount of tension on them. Loosen the top nut using a 21mm wrench, but DO NOT remove it all the way off. This holds up the front suspension. (pic 1)



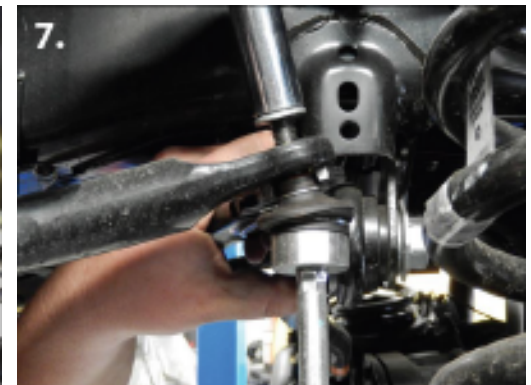
With the parking brake set and wheel chocks behind the rear tires, use a jack to lift the front of the vehicle and place jack stands under the frame on each side. Remove the front wheels.



**1.** Using a 13mm wrench, unbolt the brake line brackets from the frame on both sides. Also unbolt the brake line bracket from the axle for extra maneuverability. (pic 2)

**2.** Support the front driveline with a suitable strap and remove the four front drive shaft flange bolts, using a 15mm socket. (pic 3)

**3.** Remove the driver side drag link to pitman arm nut using a 21mm socket. Use a tie-rod removal tool to avoid damaging the factory rod end. (pic 4)



**4.** Remove the pitman arm to steering box nut using a 46mm socket. (pic 5)

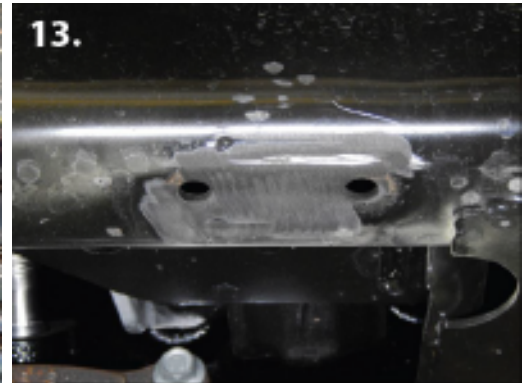
**5.** Using a pitman arm puller, remove the pitman arm from the steering box output shaft. (pic 6)

**6.** Remove the sway bar end link top nut on both sides using a 18mm socket. Separate the sway bar from the end links. (pic 7)





- 7.** Remove the sway bar mounting bolts from the frame using a 15mm socket. (pic 8) And remove the sway bar.
- 8.** Support the front axle and remove the front shock top nuts.
- 9.** Remove the front shock lower mounting bolt using a 21mm socket. (pic 9) And remove the front shocks.
- 10.** Lower the front axle until the front coil spring tension is released. Now remove the front coil springs. (pic 10)

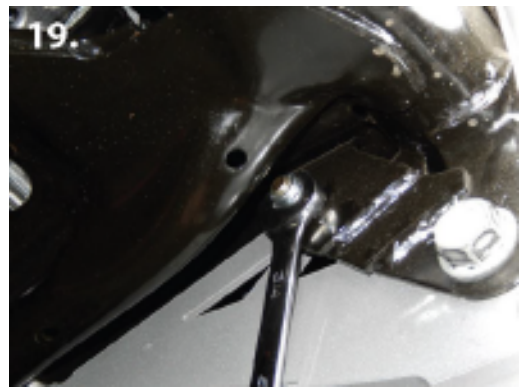


- 11.** Remove the track bar from the factory track bar bracket using a 27mm socket. (pic 11)
- 12.** Use a cut-off wheel to remove the front bump stop mounts from the frame on both sides. DO NOT DESTROY. The factory bump stops and mounts will be reused. (pic 12)
- 13.** Clean the remaining weld material from the frame using an abrasive disc or flap-wheel. (pic 13)
- 14.** Clean the factory bump stop that was just removed as well. Be sure to paint both the frame and the mount.



- 15.** Install the factory bump stop mount to the new extension brackets using the supplied 3/8" buttonhead allen bolts, washers, and locking nuts. (pic 14)
- 16.** Install the factory bump stops back on the factory mounts. This may take some force. (pic 15)
- 17.** Re-thread the bump stop mounting holes on the frame using the supplied 7/16" tap. Next, install the new bump stop assemblies onto the vehicle using the supplied 7/16" x 3/4" bolts. (pic 16)





**18.** Mount the new track bar relocation bracket using the factory hardware. Next, place something firm between the crossmember and the oil pan to prevent any damage. Now drill a brace hole using a 7/16" drill bit. (pic 17) Install using the supplied grade 8 7/16" x 1-1/2" bolts, washers, and locking nuts.

**19.** Drill out the top hole on the bracket using a 1/2" drill bit. Due to variances on the Ram frames, your vehicle may not require drilling. Install using the provided 1/2" x 1/2" bolt from the rear with washers and locking nut. (pic 18-19)



**20.** Remove the factory radius arms, using a 27mm socket on the upper axle bolt and a 24mm socket with a 27mm wrench on the lower axle bolt. (pic 20) Use a 27mm socket on the frame side to remove the radius arms. (pic 21)

**21.** Install the factory track bar into the new drop bracket using the supplied 18mm x 90mm bolt, washers, alignment cams, and locking nut. Torque to factory specs. Track bar alignment cams must be used in the 10" position. (pic 22) Place the cams on both side of the track bar bracket, so that the bolt can pass through with no obstruction.

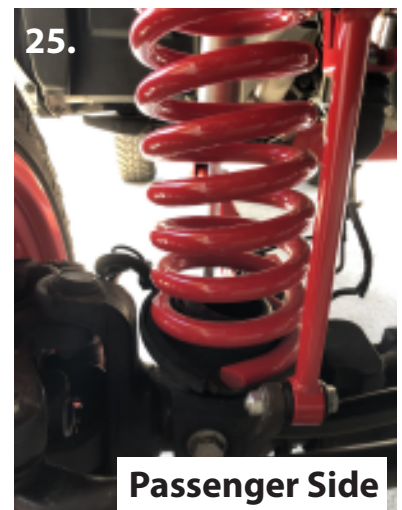


**22.** Before installing the new supplied lift coils, be sure to trim the protrusion off the factory coil insulators as shown. (pic 23)



**23.** Now install the new lift coils with lower tag aligned at the 9:00 position on the driver side and 3:00 position on the passenger side. The motor of the vehicle being the 12:00 position. The coils should be aligned with the sway bar end links when finished. Be sure the tighter coil windings face up and the open windings face down. (pic 24-25)

**NOTE: Be sure to install new shocks at this time. They are what keep the coils in place. Otherwise the coils will shift or fall out of place.**







**24.** Install the supplied driver side brake line drop bracket on the frame using the factory hardware. Next, install the factory brake line bracket to the new drop down bracket using the supplied 5/15" x 3/4" hardware. (pic 26-27)

**25.** Now install the supplied passenger side brake line drop down bracket on the frame using the factory hardware. (pic 28) Then install the the factory brake line bracket to the new drop down bracket using the supplied 5/16" x 3/4" hardware. Be sure to re-attach the lower brake line brackets to the axle on both side, using a 13mm socket.



**25.** Install new drop pitman arm, DC602. Apply the supplied red thread locker to the factory pitman arm retention nut and tighten to factory specs. (pic 29)

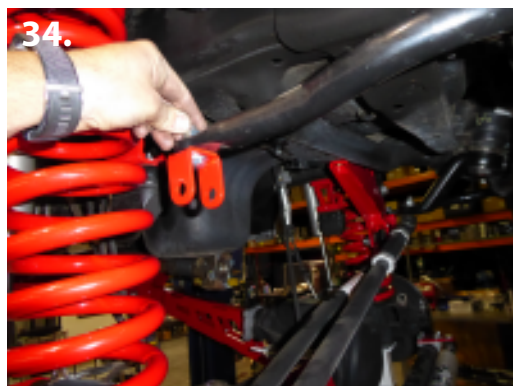
**NOTE: Check and re-torque this nut after the first 500 miles fo driving.**

**26.** Loosen the drag link adjuster lock nuts. Turn the adjuster until the drag link is free.

**27.** Cut off the unthreaded portions of the end link, as shown. (pic 30-31)

**28.** Reinstall end back on the drag link. Insert the drag link end back into the pitman arm from the bottom, as shown. (pic 32) Tighten nut to factory specs.

**29.** Adjust the drag link to center teh front axle at ride height.



**30.** Install the provided sway bar drop brackets onto the factory sway bar. (pic 33-34)

**31.** Install new sway bar end link into new drop brackets on the sway bar and the factory lower mounts. (pic 35)





**32.** Install new front billet drive line spacer between rear of the drive line and transfer case with provided 7/16" x 14 x 2" bolts and loctite. Torque to factory specs.

**33.** Apply the supplied thread locking compound to the drive shaft flange retaining bolts. Align the drive shaft flange to the axle flange and torque to factory specs. (pic 36)

## 4-LINK INSTALLATION



**1.** Install the supplied bushins and sleeves into the new upper and lower 4-link arms. (pic 1-2)

**2.** Install the upper 4-link arm into the upper mount on the axle, using the factory hardware. (pic 3)



**3.** While holding the upper arm in place, install the 4-link drop down bracket using the provided hardware. (pic 4)

**4.** Install the lower 4-link arm onto the lower axle mount using the factory hardware. Then, install the rear of the lower arm into the drop down bracket using the provided hardware. (pic 5-6)



**5.** Make sure new 4-link drop down bracket is pushed all the way against the bottom of the frame. Use the bracket as a locator to drill a 1/2" hole. Next, remove the 4-link mount from the frame so that you can drill the hole out to 11/16". (pic 7-8)





**6.** Once the hole is drilled out, install the provided rivet nut. Use the provided rivet nut tool with a 3/4" socket and IMPAC tool to crimp the rivet nut inside the frame. (pic 9-11)



**7.** Reinstall the 4-link drop down mount to the frame using the provided hardware. Next, reinstall the upper and lower arms. (pic 12-13)  
**8.** Now repeat this process on the opposite side.

## REAR INSTALLATION



**1.** Support the rear axle and remove the parking brake cable retainer bracket nut. (pic 1)

**2.** Remove the top shock nut using a 18mm socket. Remove the bottom shock hardware using a 21mm socket and wrench. Now remove the shocks completely from vehicle. (pic 2-3) Repeat on the opposite side.



**3.** Remove the upper and lower sway bar end link hardware. Then remove the sway bar end link from vehicle. (pic 4-5) Repeat on the opposite side.

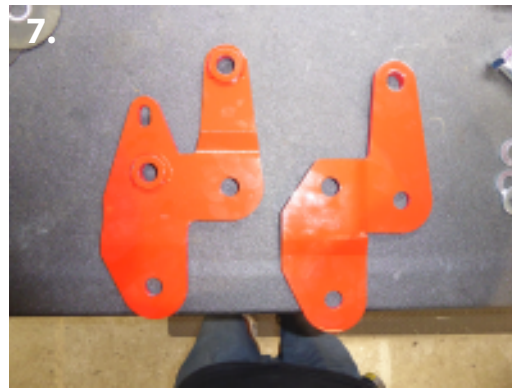
**4.** Remove the track bar to axle hardware.

**5.** Lower the rear axle until spring pressure has been safely released. Then remove the rear coils from the vehicle.





6.



7.



8.

**6.** Shown, are the rear 4-link frame mount sleeves. Use the narrow sleeves for the upper bolts and the wider sleeves for the lower bolts. (pic 6)

**7.** These are the driver side rear 4-link mounts. The left bracket is the driver side outer and the right bracket is the driver side inner. (pic 7)

**8.** Use the provided spacers and factory hardware to install the new 4-link brackets. (pic 8-9)

**9.** Before installing your factory upper arms into the new mounts. You will have to relieve a small section of the factory mount so that the new bolts will have clearance. Use provided 20mm x 130mm hardware. (pic 10)



9.



10.

**10.** Use the provided 20mm x 140mm bolt to install your factory lower arms into the new brackets.



11.



12.



13.

**11.** There is a small hole in the factory 4-link mount. This hole must be drilled out to 1/2". Once drilled out, use the provided shim to fill the void between the new bracket and the factory mount. Use the provided 1/2" x 1-1/2" bolt and tighten down. (pic 11-14)



14.





15.

**12.** Install the new rear 4-link drop support arm. First remove the bolt for the lower link bar. The new support arm slides over the outside of the new 4-link drop brackets. Reinstall the bolt through the support arm, both drop brackets, and the lower arm. (pic 15)

**13.** Repeat steps 8 through 12 on the opposite side of the vehicle. Once both sides are installed, you can now lift the support arm up against the bottom of the frame.

**14.** The 4-link drop support arm uses the provided rivet nuts, three per side. With the support arm in place against the frame, mark all three holes (per side) to be drilled. Then move the support arm out of the way and drill each hole to 11/16". Now install the three rivet nuts (per side). Once the rivet nuts are installed, you can now move the support arm back up in place and install using the provided 1/2" x 1-1/4" bolts.

16.



17.



18.



**15.** Install the passenger side rear lower coil mount. The mount can only fit one way. The "M" faces towards the back of the vehicle. Use the provided 3/8" x 1-1/4" hardware to install. (pic 16-17)

**16.** Now install the driver side rear lower coil mount. This mount also can only fit one way. The "M" face towards the back of the vehicle. Use the provided 3/8" x 1-1/4" hardware to install. (pic 18)

19.



20.



21.



**17.** The rear track bar bracket slips into the factory mount on the axle. Use the factory hardware to install, but **DO NOT FULLY TIGHTEN YET.** (pic 19)

**18.** Attach the rear track bar bracket brace from the coil spacer, using the provided 1/2" x 1-1/4" bolts, to the front side of the track bar bracket. (pic 20)

**19.** Use the provided 9/16" x 1-1/4" bolt through the one side of the track bar bracket to attach the brace to the bracket. **DO NOT FULLY TIGHTEN YET.** (pic 21)

**20.** Use the provided 9/16" x 3" bolt to install the factory track bar into the new track bar bracket. The bolt will pass through the track bar bracket, the track bar brace, and the track bar itself. **DO NOT FULLY TIGHTEN YET.**





**21.** Now install large rear track bar bracket brace. Remove the two bolts on the track bar bracket and reinstall with the large brace in place. (pic 22)

**22.** You can now tighten these two bolts. Be sure you are using a washer on the bolt head side. (pic 23)

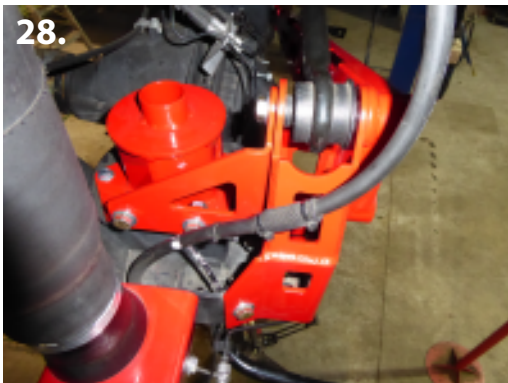
**23.** Now tighten the bolt on the track bar bracket to the factory mount. The new track bar bracket should be sitting perpendicular to the axle. (pic 24)



**24.** Tighten the two bolts going through the track bar brace and the coil spring mount. (pic 25)

**25.** You will now need to drill a 1/2" hole through the track bar bracket into the factory track bar mount. Once drilled, use the provided 1/2" x 1-1/4" bolt and tighten. (pic 26)

**26.** You will also need to drill a 1/2" hole for the large track bar brace underneath the passenger side coil bucket. Use the provided 1/2" x 1-1/4" bolt and tighten down through the bracket and coil bucket. (pic 27)



**27.** All hardware for the track bar bracket and braces should now be tightened. Finished, it should look like this. (pic 28-29)





**28.** Install the new lift coils, using the factory coil isolators on the top and bottom of the new coils. (pic 30)

**29.** Install the provided bushings and sleeves on the new sway bar end link. Be sure to grease the bushings before installing. Use the provided 1/2" x 2-3/4" bolts to install the new sway bar end link in the factory location. Tighten all four bolts. (pic 31)



**30.** Remove the factory bump stops using a 15mm socket. (pic 32)

**31.** Install the new rear bump stop extensions to the frame using the factory hardware. Now mount the factory bump stop to the new extension using the provided 3/8" x 1-1/4" hardware. (pic 33) Repeat this process on the opposite side of vehicle.

**NOTE: Be sure to install new shocks at this time. They are what keep the coils in place. Otherwise the coils will shift or fall out of place.**

**IMPORTANT: Double check all of the front and rear components, making sure everything has been properly torqued and tightened. This MUST be done before operating the vehicle. We recommend periodically check all of the front suspension and all lift kit components to be certain they are tight and in proper working order. Make sure vehicle is properly aligned before driving.**