

Aerial Map



Gold-Eagle Cooperative



Maps Provided By:

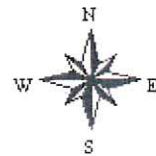


© AgriData, Inc 2019 www.AgrDataInc.com

Map Center: 42° 47' 46.01, -93° 56' 58.51

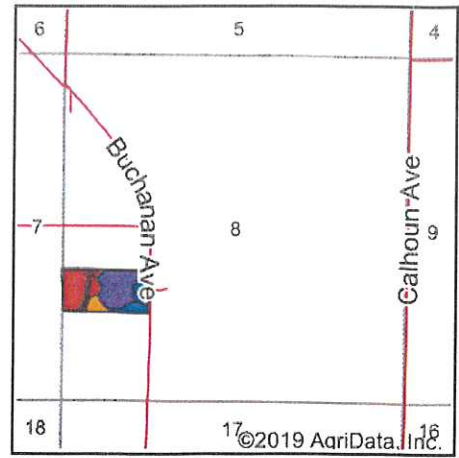
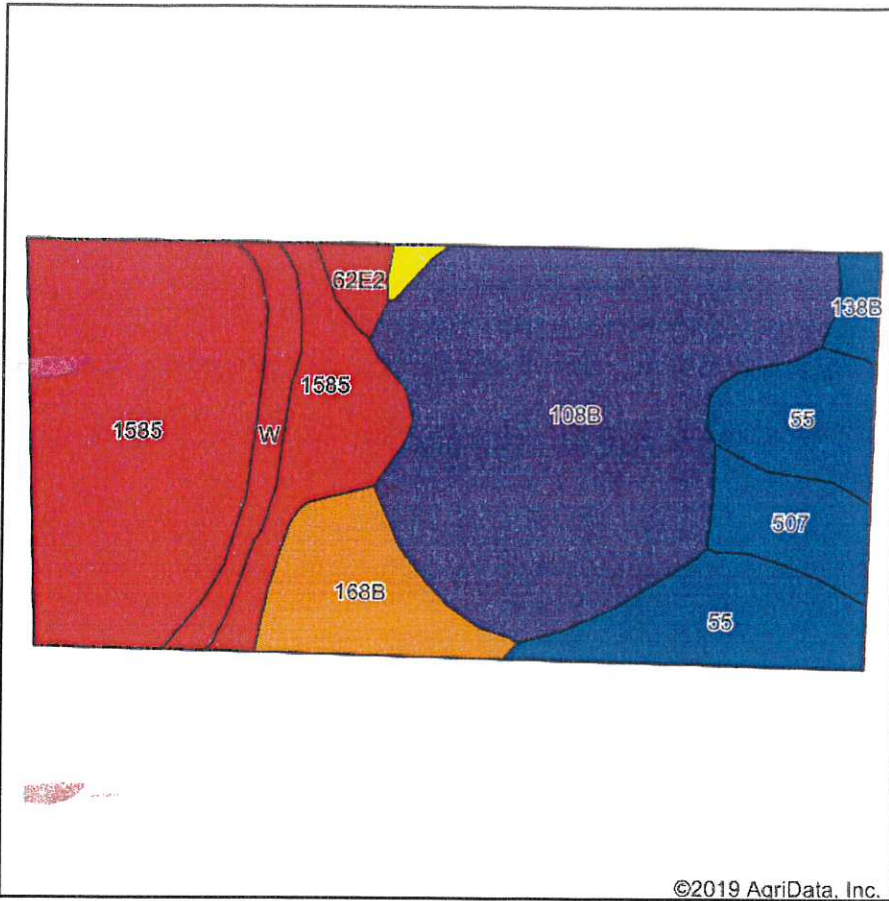


8-92N-26W
Wright County
Iowa



2/7/2020

Soils Map



State: Iowa
 County: Wright
 Location: 8-92N-26W
 Township: Liberty
 Acres: 20
 Date: 2/7/2020



Soils data provided by USDA and NRCS.

©2019 AgriData, Inc.

Area Symbol: IA197, Soil Area Version: 28

Code	Soil Description	Acres	Percent of field	CSR2 Legend	Non-Irr Class *c	CSR2**	CSR	Oats	Spring wheat
108B	Wadena loam, 2 to 6 percent slopes	7.31	36.6%		Ile	52		4	2
1585	Spillville-Coland complex, channeled, 0 to 2 percent slopes	6.36	31.8%		Vw	30	25		
55	Nicollet clay loam, 1 to 3 percent slopes	2.61	13.0%		Iw	89	88		
168B	Hayden loam, 2 to 6 percent slopes	1.46	7.3%		Ile	76	70		
507	Canisteo clay loam, 0 to 2 percent slopes	0.89	4.4%		Ilw	84	78		
W	Water	0.73	3.6%			0	0		
138B	Clarion loam, 2 to 6 percent slopes	0.27	1.4%		Ile	89	80		
62E2	Storden loam, 10 to 22 percent slopes, moderately eroded	0.27	1.4%		IVe	32	31		
168C2	Hayden loam, 6 to 10 percent slopes, moderately eroded	0.10	0.5%		Ille	70	54		
Weighted Average						51.4	*-	1.5	0.7

**IA has updated the CSR values for each county to CSR2.

*- CSR weighted average cannot be calculated on the current soils data, use prior data version for csr values.

*c: Using Capabilities Class Dominant Condition Aggregation Method

Soils data provided by USDA and NRCS.