

Southeastern Pennsylvania
Transportation Authority

Jenkintown-Wyncote Station Improvements

Consultant Team:

Gannett Fleming, Inc.

PB Americas, Inc.

Sowinski Sullivan Architects, P.C.

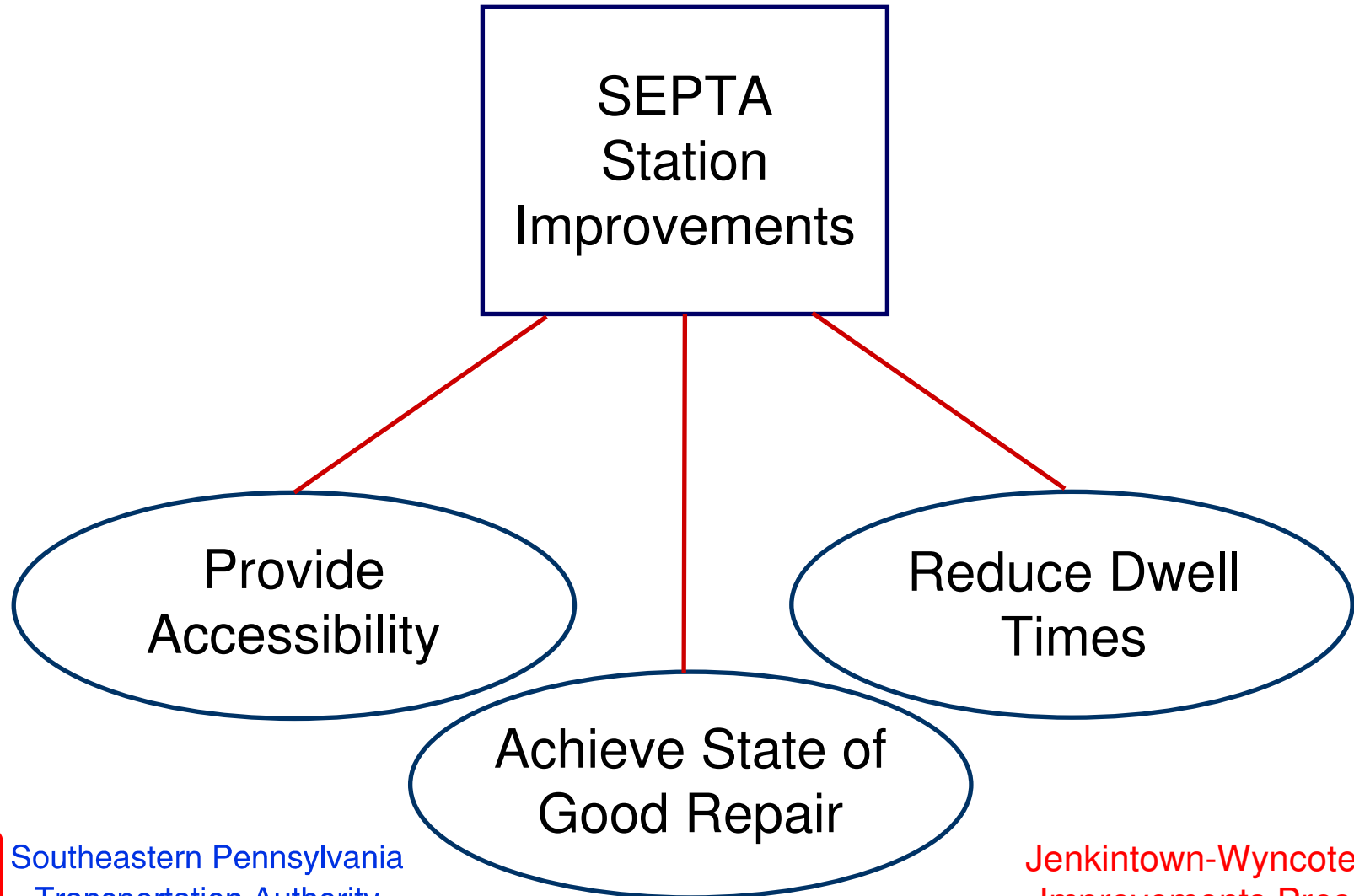
Pinto Engineering, Inc.

ASC Group, Inc.

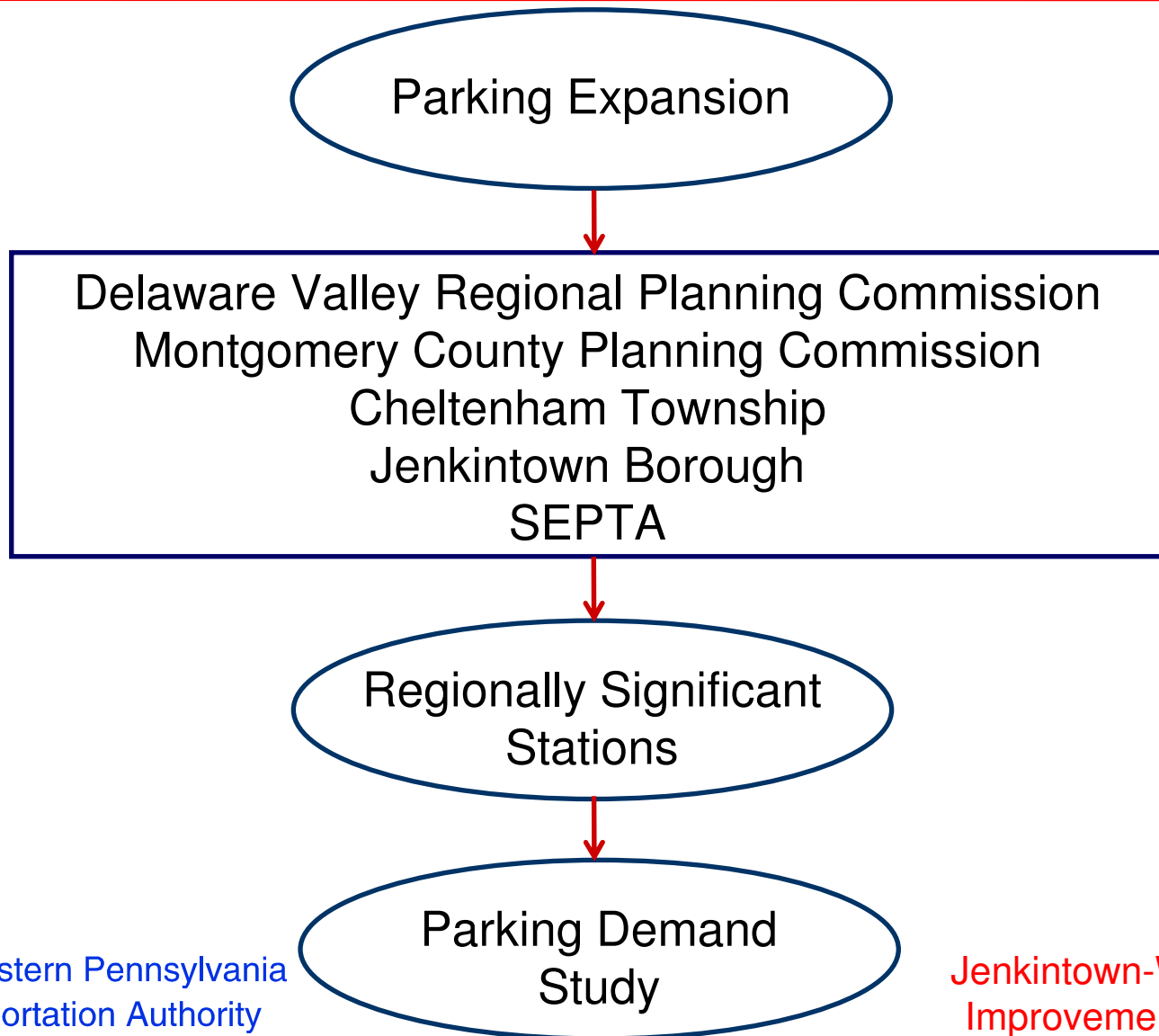
CHPlanning, Ltd.

April 6, 2009

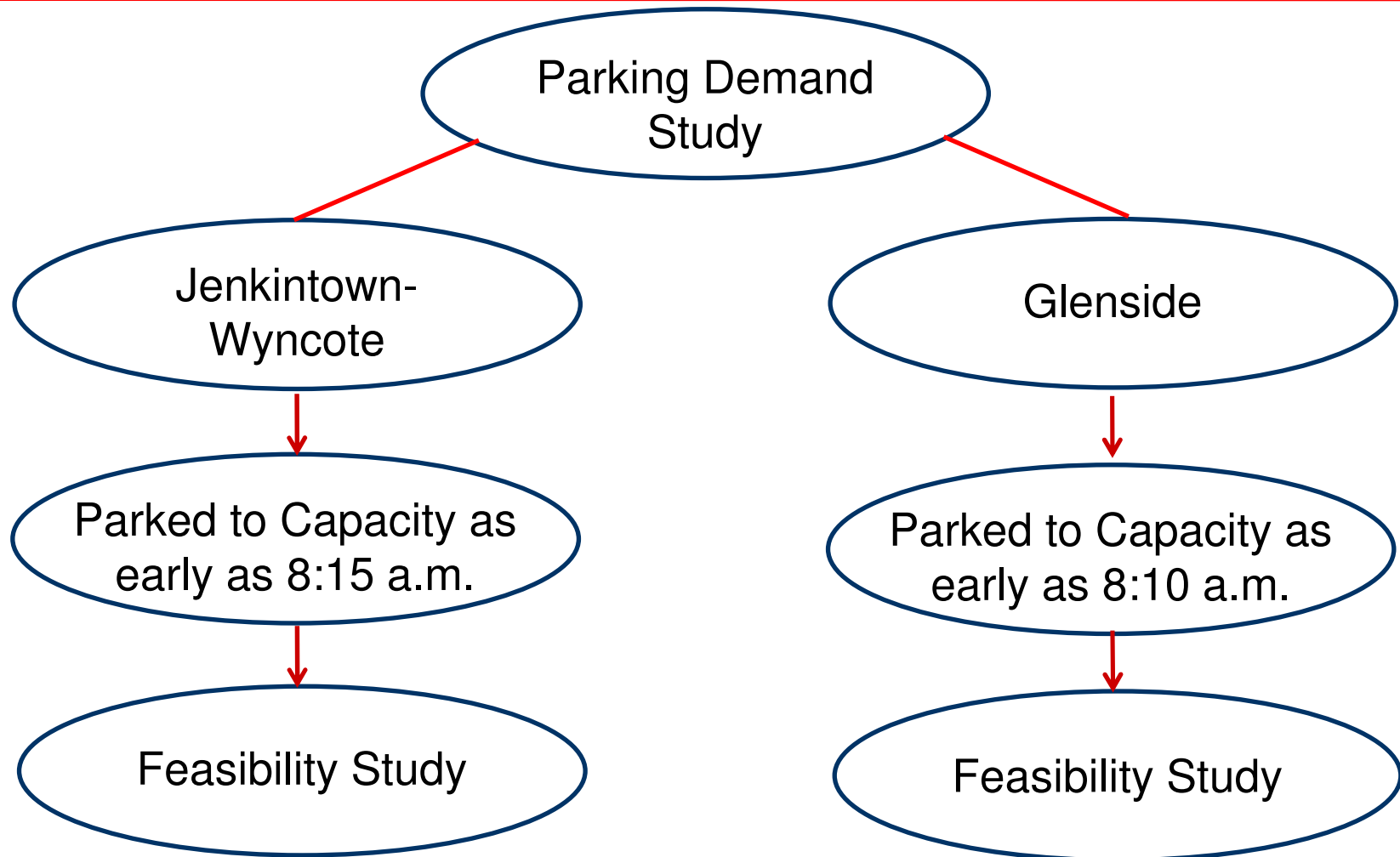
Project Purpose



Project Purpose



Project Purpose

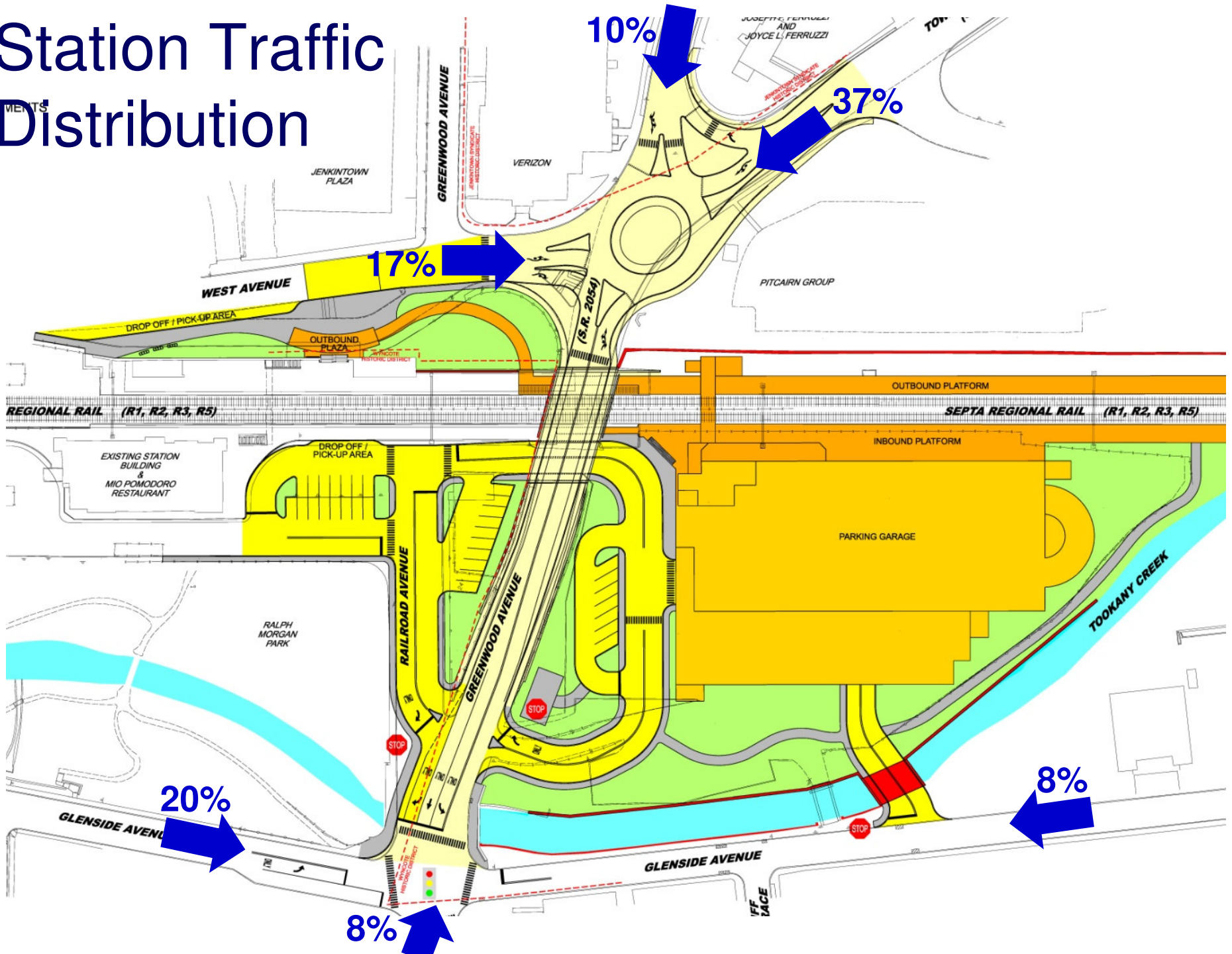


Traffic

Project as Proposed Improves
Local Traffic Flow at Intersection
of Glenside and Greenwood



Station Traffic Distribution



Traffic

Greenwood/Glenside Intersection Peak Hour Level of Service (LOS)

	Existing		2011		2025	
	A.M.	P.M.	A.M.	P.M.	A.M.	P.M.
Existing Condition	D	E	D	F	E	F
With 700 Car Garage (Additional 350 cars)	n/a	n/a	B	C	C	C

Legend:

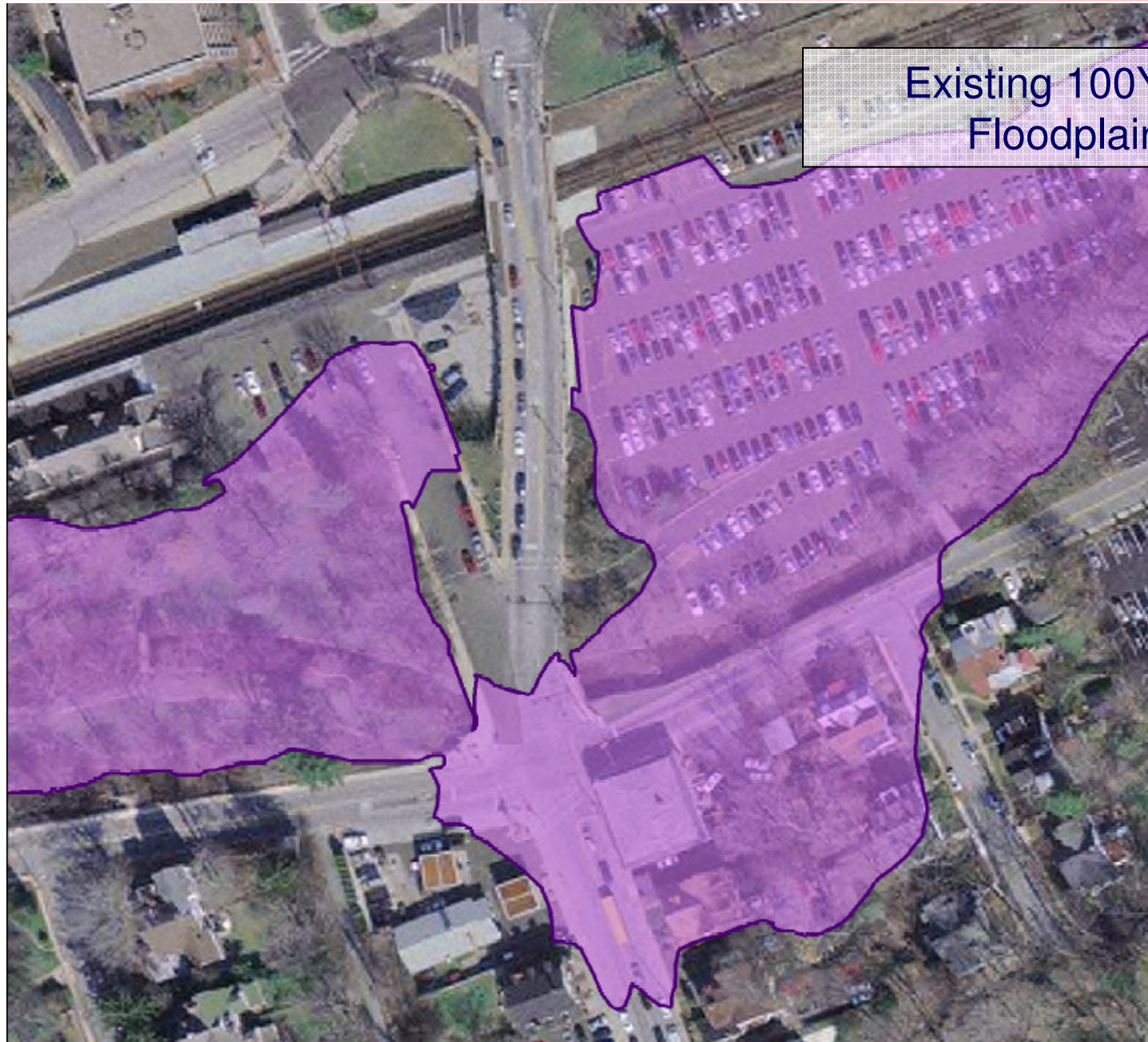
LOS	Average Delay	General Description
A	0 - 10 sec./veh.	Under Capacity
B	10 - 20 sec./veh.	Under Capacity
C	20 - 35 sec./veh.	Under Capacity
D	35 - 55 sec./veh.	At Capacity
E	55 - 80 sec./veh.	At Capacity
F	> 80 sec./veh.	Over Capacity

Flooding

Project as Proposed Dramatically
Improves Flooding Impact

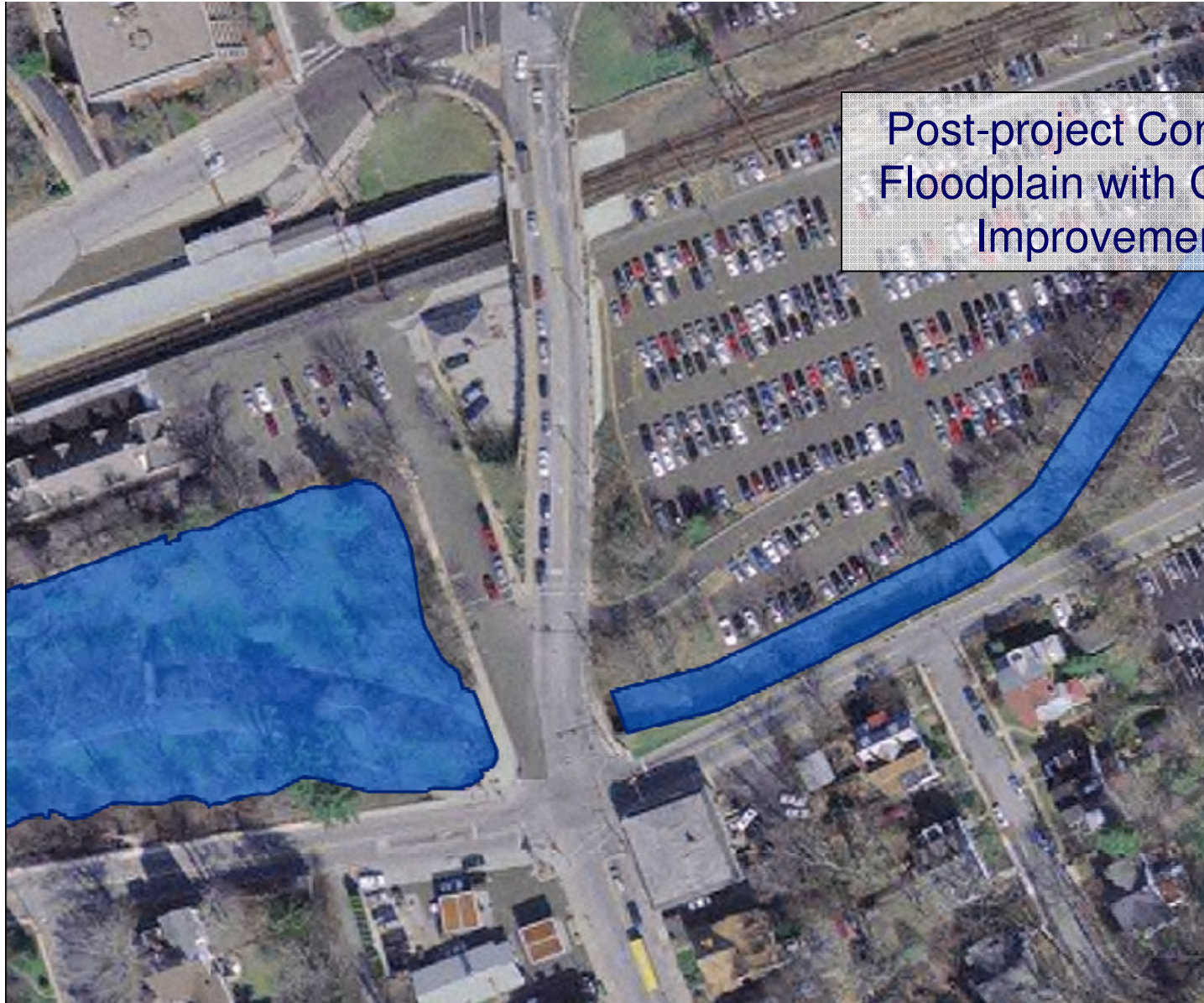


Tookany Creek Improvements



Existing 100Year
Floodplain

Tookany Creek Improvements



Post-project Conditions
Floodplain with Channel
Improvements

Station Building Options

	Number of Cars in Garage	Total Number of Levels	Recessed Bottom Level	Top Floor Parapet Height Above Grade	Height Above or Below Bridge
Feasibility Study	690	4 Full	Yes	25.5 ft.	-2.0 ft.
Initial Concept	700	4 Full, 1 Partial	No	49.5 ft.	+17.5 ft.
Alternate 1	700	4 Full, 1 Partial	Yes	37.0 ft.	+9.5 ft.
Alternate 2	600	4 Full	Yes	27.0 ft.	-0.5 ft.

Security

- **Passive Safety / Security Measures**
 - Floor to Floor Heights
 - Flat Floors
 - Open Deck
- **Active Safety / Security Measures**
 - CCTV in Stairs / Elevators
 - Emergency Call Boxes
 - Sprinklers Throughout Deck
 - Consistent, Even Lighting
- **SEPTA Presence**
 - Station Ticket Agent
 - Parking Management Personnel
 - Adjacent to Platforms



Historical Character



Temporary Parking



Southeastern Pennsylvania
Transportation Authority

Jenkintown-Wyncote Station
Improvements Presentation