

**"SUPERVISOR ROY T GILBERTS PLAT No. 3"**  
 SITUATED IN P.C. LOT No. 2 AND ALSO EMBRACING SUCH LAND AS LIES BETWEEN THE  
 INDIAN OR CANOE CUT AND THE EAST LINE OF P.C. LOT No. 2 HARSENS ISLAND  
 CLAY TOWNSHIP ST. CLAIR COUNTY MICHIGAN.

June 19-1928  
 L. L. Hurley

CERTIFICATE OF APPROVAL OF BOARD OF COUNTY AUDITORS  
 This plat was approved by the board of County Auditors of St. Clair  
 County, Mich., this 2 day of May, 1928  
 Charles F. Johnson, Chairman  
 W. J. Wilson  
 H. B. Van Alkenburg

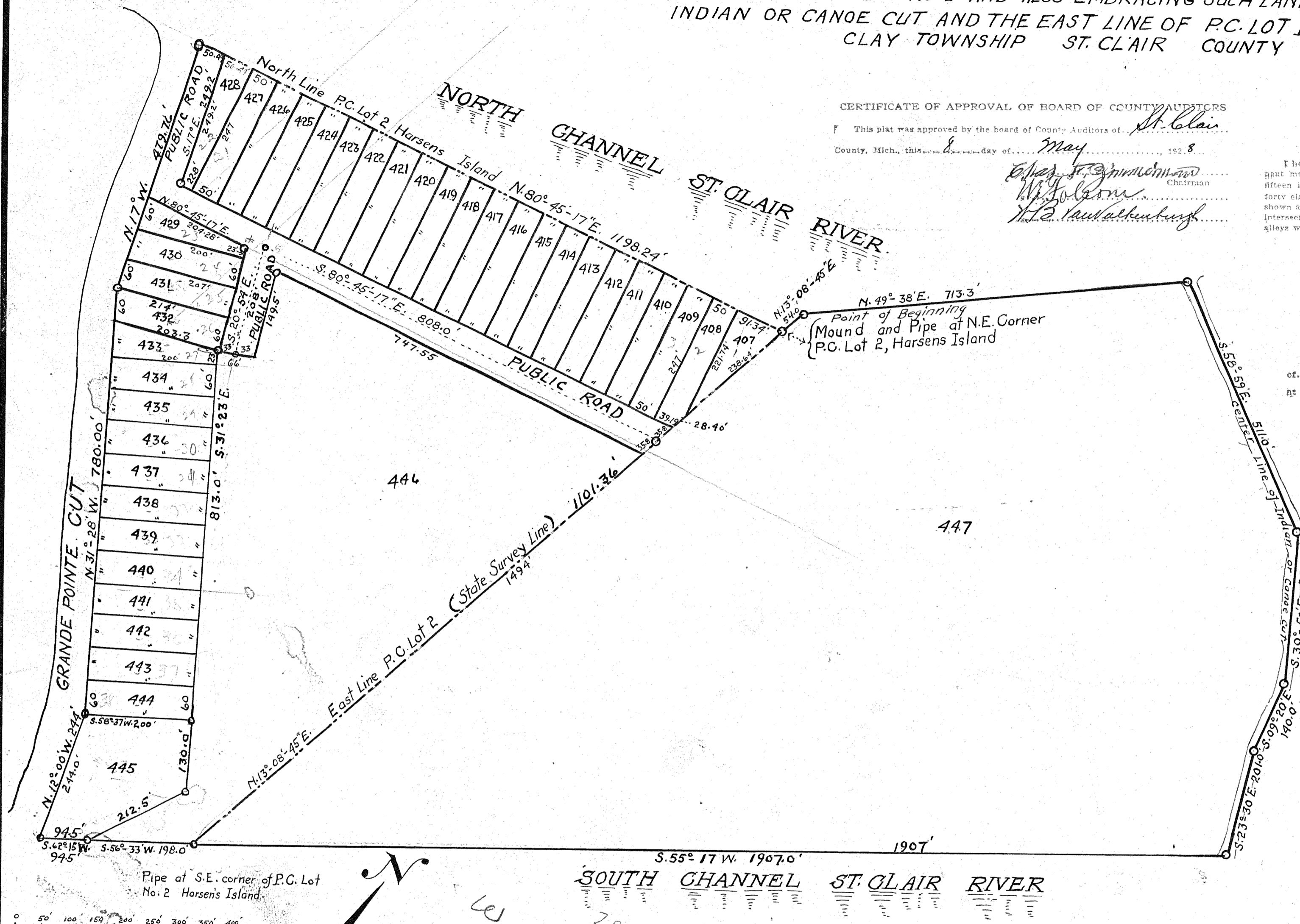
SURVEYOR'S CERTIFICATE  
 I hereby certify that the plat hereon delineated is a correct one and that permanent monuments consisting of iron pipe of not less than one inch in diameter and fifteen inches in length set in a concrete base at least four inches in diameter and forty eight inches in length have been placed at all points marked thus "M" as hereon shown at all angles in the boundaries of the land platted, at all intersections of streets, intersections of alleys, or of streets and alleys and at all intersections of streets and alleys with the boundaries of the plat.  
 Ernoy S. Crocker  
 Registered Surveyor.

CERTIFICATE OF MUNICIPAL APPROVAL  
 This plat was approved by the Township Board  
 of Clay Township of St. Clair County, Mich.,  
 at a meeting held this 3 day of April, 1928  
 Clarence A. Doughty  
 Clerk.

REGISTER'S OFFICE  
 ST. CLAIR COUNTY  
 Reported for Record on 25  
 day of June A. D. 1928  
 at 10 o'clock A. M. and prepared  
 to issue 48 of Plat  
 of 36  
 W. J. Wilson  
 Register

**DEDICATION.**  
 KNOW ALL MEN BY THESE PRESENTS:  
 That I Roy T. Gilbert, Supervisor of the Township of Clay, St. Clair Co. Michigan, by virtue of Authority in me vested by Section 3350, Compiled Laws of 1915, as amended, having been duly authorized by the Township Board of the Township of Clay, St. Clair Co. Michigan have caused the land embraced in the annexed Plat to be surveyed laid out and platted to be known "Supervisor Roy T. Gilberts Plat No. 3" Situated in P.C. Lot No. 2 and also embracing such land as lies between the Indian or Canoe Cut and the east line of P.C. Lot 2, Harsens Island Clay Tp. St. Clair County Michigan, and the Cut and Roads shown on said Plat is dedicated to the use of the Public.  
 Signed and sealed in Presence of  
 W. J. Wilson, Register  
 Roy T. Gilbert, Supervisor Clay Tp. St. Clair Co. Mich.

STATE OF MICHIGAN }  
 County of St. Clair }  
 On this 16 day of April, A.D. 1928 before me, a Notary Public in and for said County, personally came the above named Roy T. Gilbert Supervisor of Township of Clay St. Clair Co. Mich., known to me to be the person who executed the above dedication and acknowledged the same to be his free act and deed as such Supervisor.  
 My Commission expires Mar. 12 1932  
 Mansel Stewart  
 Notary Public St. Clair Co. Mich.



**DESCRIPTION OF LAND EMBRACED IN PLAT**  
 The Land embraced in the annexed Plat of "Supervisor Roy T. Gilberts Plat No. 3" Situated in P.C. Lot No. 2 and also embracing such land as lies between the Indian or Canoe Cut and the easterly line of said P.C. Lot No. 2, and the North Channel and the South Channel of the St. Clair River Harsens Island, Clay Tp. St. Clair Co. Mich. is hereby described as follows; From a mound and Pipe (State Survey Monument) marking the North East corner of said P.C. Lot No. 2, thence N13°-08'-45" E. 54.00 feet; thence N 49°-38' E. 713.30 feet; to the center of said Canoe or Indian Cut; thence along said Canoe or Indian cut and S.56°-59' E. 511.0 feet; thence S. 30°-50' E. 282.0 feet; thence S. 09°-20' E. 140.0 feet; thence S. 23°-30' E. 201.0 feet to the shore of the South Channel of the St. Clair River; thence S.55°-17' W. 1907.0 feet along said South Channel to the east line of P.C. Lot 2; thence S.36°-33' W. 198.0 feet; thence S. 62°-15' W. 94.5 ft. to the Grande Pointe Cut; thence N.12°-00' E. 244.0 feet; thence N.31°-23' W. 780.0 feet; thence N.17° W. 479.76 feet to the North Channel of the St. Clair River; thence N. 80°-45'-17" E. 1198.24 to the Point of Beginning.

