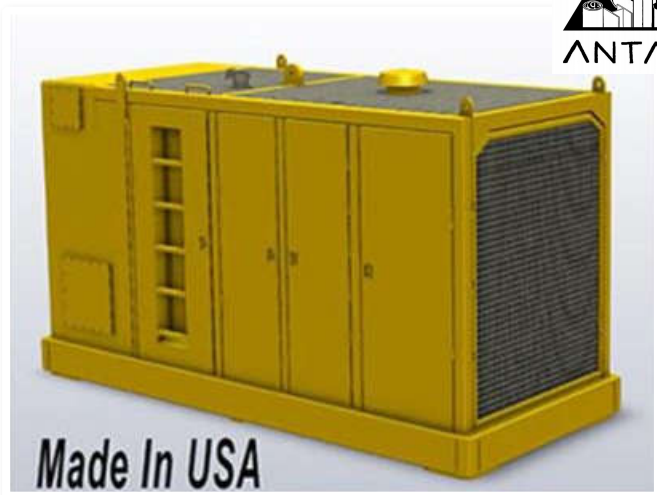
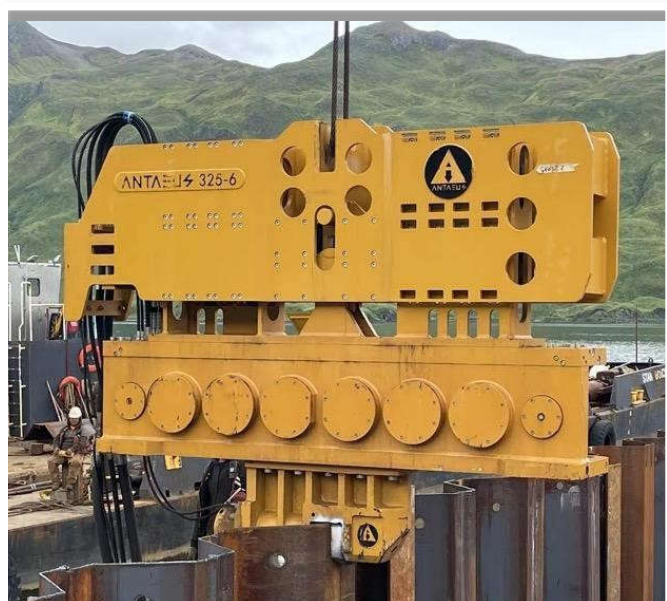


J&G SALES, INC.

PILE DRIVING EQUIPMENT

ANTAEUS Model 325-6



Model 325-6 Exciter

US Specifications

Eccentric Moment (In/Lbs)	7000
Dynamic Force (Tons)	270
Frequency (VPM)	1650
Max Line Pull (Tons)	185
Weight With Out Sheet Clamp (LBS)	19,450
Length (Inches)	140
Width @ Throat (Inches)	16.75
Height w/o Clamp (Inches)	75

Model 800 Power Unit

US Specifications

Engine	Tier 4 Stg 5 C18 CAT
Power (HP)	800
Drive Pressure (PSI)	4500
Drive Flow (GPM)	231
Clamp Pressure (PSI)	4800
Clamp Flow (GPM)	10
Weight With All Fluids (lbs)	23,900
Length (Inches)	185
Width (Inches)	81.5
Height (Inches)	95
Hydraulic Reservoir (gal)	800
Hydraulic Reservoir Spare Tank (gal)	55
Fuel Capacity (gal)	150

SALES * RENTALS * PARTS & OUTSTANDING SERVICE since 1987

PO Box 547, Bellville, TX 77418 * 11195 Highway 159 East, Bellville, TX 77418 * 1-800-842-7622 Toll Free * www.jgsalesinc.com