

## CYPERACEAE – SEDGE FAMILY

**Plant:** annual or more commonly perennial

**Stem:** stem (solid) is termed a culm, simple, mostly erect, often angled (mostly triangular) but some round or angled; some with rhizomes or stolons

**Root:** fibrous

**Leaves:** mostly linear, alternate, parallel veins, often in 3 ranks (vertical rows), leaf sheath usually closed, leaf blade flat, folded, round or absent; a ligule is often present

**Flowers:** small, 2-ranked or spiraled on a spike stalk in 1 or more spikelets in simple to complex inflorescences, each flower in axil of a scale, the inflorescence itself may be subtended by a leaf-like and sometimes showy bracts; perianth usually represented by 1-6 bristles, scales or are absent; perfect or imperfect (monoecious); 3 (1-6) stamens; 1 pistil, 1 style, ovary superior, 2-3 carpels, 1-chambered ovary

**Fruit:** achene (lens-shaped to triangular in cross-section, achene enclosed in a sac – perigynium in the *Carex* genus)

**Other:** often occurring in bogs, swamps, or meadows along streams, but also in dry areas and forests; Monocotyledons Group

**Genera:** 100+ genera; locally many genera

2 slides per species

## CYPERACEAE – GENUS SCHOENOPLECTUS (A-Z)

Common Three-Square Bulrush [Chair-Maker's Rush]; *Schoenoplectus pungens* (Vahl) Palla  
Softstem [Great] Bulrush; *Schoenoplectus tabernaemontani* (C.C. Gmel.) Palla

# Common Three-Square Bulrush

## [Chair-Maker's Rush] – p1

*Schoenoplectus pungens* (Vahl) Palla  
Cyperaceae (Sedge Family)

Lake Springfield, Greene County, Missouri

Notes: plant perennial, to 200+ cm; Culm strongly trigonous but sides NOT strongly concave, culm with stout and well developed rhizomes; roots fibrous; Leaves up to 9+ mm wide, green, glabrous, usually V-shaped; Ligule present; inflorescence is a head-like cluster (capitate) with a bract up to 20 cm; 1-5+ spikes, mostly sessile present (see photos on P2 showing examples and sizes of scales and achenes); fairly common and found on margins of ponds, lakes, streams, ditches, gravel bars, and marshes; 2 to 3 varieties present; Spring to early fall

[V Max Brown, 2015]



Leaves often V-shaped

Rhizomes stout and long

Culm is trigonous, sides may be flat to slightly concave but not strongly so

# Common Three-Square Bulrush

## [Chair-Maker's Rush] – p2

*Schoenoplectus pungens* (Vahl) Palla  
[V Max Brown, 2015]



Scales to 5-6 mm, dark red brown to sometimes with some yellow or orange, midrib is yellowish to green, notch at tip, and prominent, an awn extends from the midrib and is usually irregularly bent



Scale



Inflorescence – 1 to 5+ spikes, trigonous bract to 20 cm



Fruit (achene) 2.5 to 3.5 mm tall, smooth, with short beak, 4-6 bristles shorter than achene body, 2 or 3 stigmas, turning brown with age



# Softstem [Great] Bulrush – p1

*Schoenoplectus tabernaemontani*

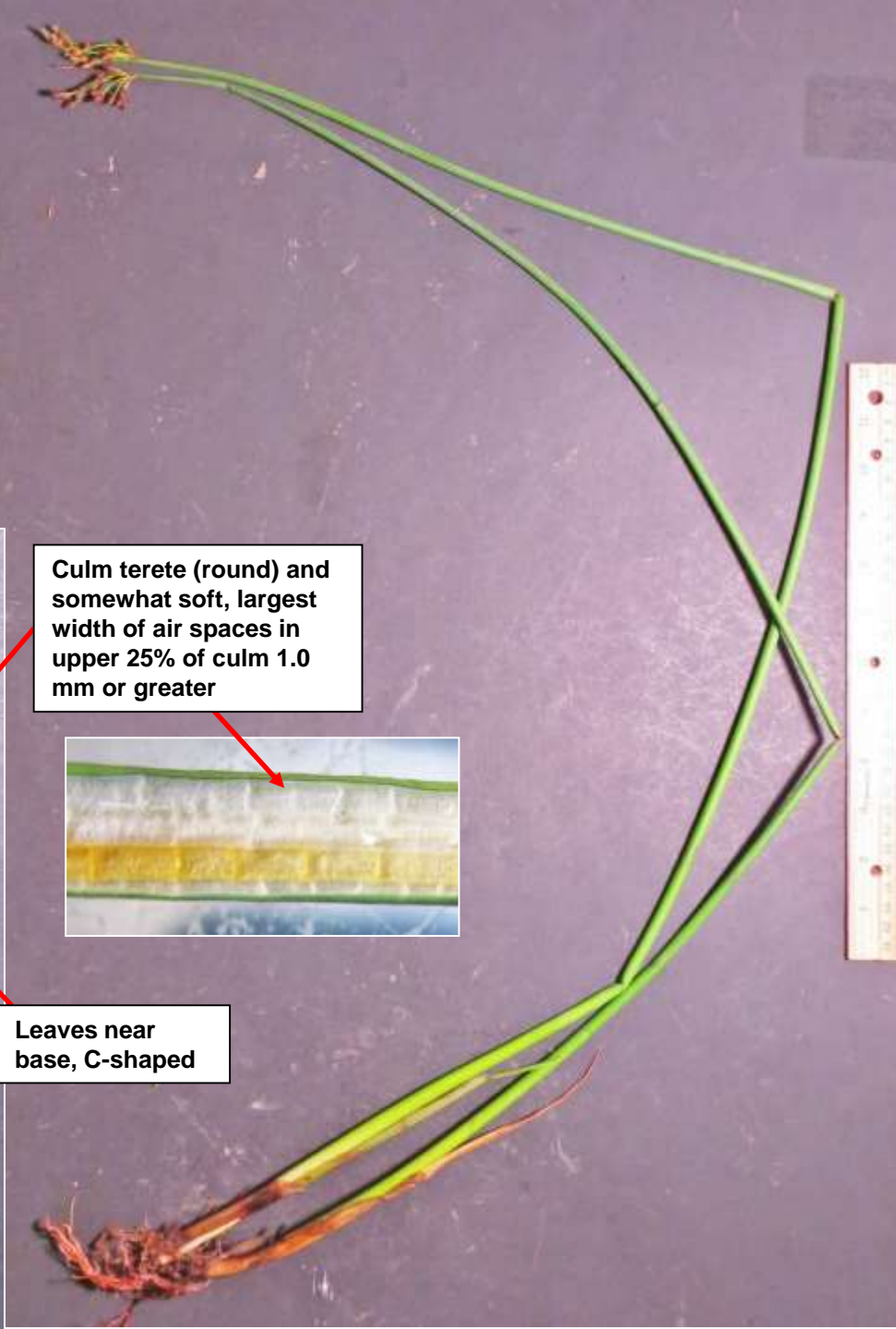
(C.C. Gmel.) Palla

Cyperaceae (Sedge Family)

Lake Springfield, Greene County, Missouri

Notes: plant perennial, to 300+ cm; Culm terete (round) with stout rhizomes; roots fibrous; Leaves near base, glabrous, flat or C-shaped, sheath membranous; inflorescence terminal, branched, with 1 to 8 (most often solitary) terminal spikes (see photos on P2 showing examples and sizes of scales and achenes); fairly common, both emergent aquatic and wet areas; (similar species is *S. acutus*); Spring to early fall

[V Max Brown, 2015]



Culm terete (round) and somewhat soft, largest width of air spaces in upper 25% of culm 1.0 mm or greater



Leaves near base, C-shaped

# Softstem [Great] Bulrush – p2

*Schoenoplectus tabernaemontani* (C.C. Gmel.) Palla  
[V Max Brown, 2015]



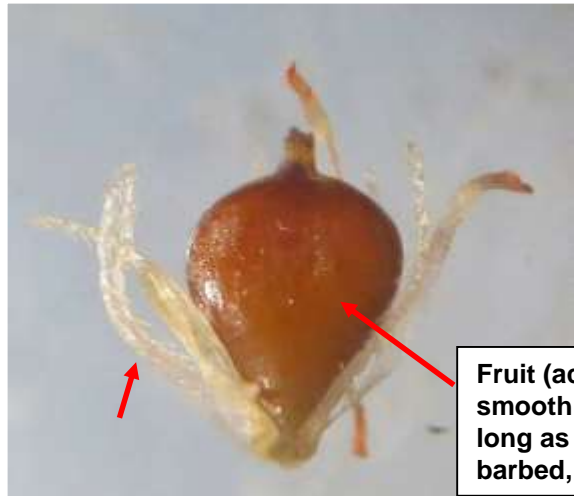
Scales – here about 2.3 mm tall, vary from 2 to 4 mm tall, reddish to brown or orange, midrib green when young, tip notched with short awn



Inflorescence irregular, branching, with terminal clusters from 1 to 8 spikelets (although many are solitary in this species), somewhat pendulous, 1 major bract with additional scales



Scales



Fruit (achene) from 1.5 to 2.7+ mm tall, smooth, short beak, 6 bristles about as long as achene and strongly retrorsely barbed, 2 (rarely 3) stigmas, flattened

