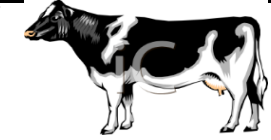


LIVESTOCK COOPERATIVE AUCTION MARKET ASSOCIATION

NORTH JERSEY, INCORPORATED

225 WEST STIGER ST HACKETTSTOWN, NJ 07840

Tuesday, November 26, 2024



While Market reports reflect the majority of livestock sold, there are instances where animals do not fit reporting categories and may not be included

LIVESTOCK REPORT

Animal		NO.	HIGH	LOW	AVG.
Bulls	lb	2	1.06	1.04	1.05
Calves	lb	25	6.60	0.05	3.52
Easy Cows	lb				
Cows	lb	18	1.22	0.54	0.91
Feeders	lb	1	1.55	1.55	1.55
Heifers	lb	2	1.16	0.99	1.08
Steers	lb	12	1.77	1.38	1.55
Roasting Pigs	lb	14	1.23	0.45	0.90
Boars	lb				
Sows	lb				
Butcher Hogs	lb				
Ewes	lb	4	1.40	1.25	1.31
Lambs	lb	24	2.55	1.50	2.03
Rams	lb	2	2.10	1.30	1.57
Sheep	lb	27	2.35	1.00	1.34
Billy	hd	13	340	110	203
Goats	hd	24	380	45	
Kids	hd	6	310	120	224
Nanny	hd	3	255	150	218
Weather	hd				
Goat Family	hd				
Lambs	hd				
Sheep Family	hd				
Roasting Pigs	hd	12	90	80	85.83
Alpaca	hd				
TOTAL		189			

POULTRY REPORT

Animal		No.	HIGH	LOW	AVG.
Rabbits	lb	10	3.25	2.50	2.93
Broilers	lb	8	2.20	2.00	2.10
Brown Eggs		21	5.25	4.00	
Duck Eggs		2	8.75	8.25	
Quail Eggs					
Blue/Green Eggs					
Goose Eggs					
White Eggs					
Misc Items	hd	13	45	5	13.92
Bantam	hd				
Broilers	hd				
Bunnies	hd	4	5	4	4.75
Call Ducks	hd				
Chicks	hd	18	5.5	3.5	4.83
Chucker	hd				
Ducks	hd	6	11	5	8
Dove	hd				
Goose	hd				
Guinea Keets	hd				
Guinea Fowl	hd				
Guinea Pigs	hd	3	5	5	5
Heavy Fowl	hd	26	22	8	16
Leghorns	hd				
Peacock	hd				
Pheasant	hd				
Pigeons	hd	62	13	7.5	8.8
Pullets	hd	9	9	9	9
Quail	hd				
Rabbits	hd	8	7	4	5.88
Roosters	hd	13	31	5	24.23
Silkie	hd	4	7	7	7
Turkeys	hd	19	50	32.5	45.71

HAY REPORT

TYPE OF HAY	No. loads	HIGH	LOW
Alfalfa			
Mixed	4	9.50	3.50
Orchard	1	3.75	3.75
Timothy			
Grass	9	8.25	3.50
Mulch	1	2.25	2.25
Clover			

GRAIN REPORT

TYPE OF GRAIN	No. Bags	HIGH	LOW
Ground Corn	24	9.50	7.00
Shell Corn			
Ear Corn			
Oat Feed			
Wheat Feed			

STRAW REPORT

TYPE OF STRAW	No. Loads	HIGH	LOW
Oat			
Wheat			
Rye	1	3.00	3.00

MISC FARM RELATED CONSIGNMENT

ITEM	NO.	HIGH	LOW
Firewood			
Posts			

**SALE SCHEDULE: 10am Hay 1030am Poultry 2pm
Goats, Lambs/Sheep Calves, Feeders, Hogs and
Cattle (we run straight through)**