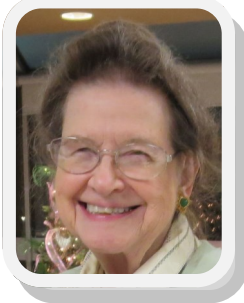


FWDP Newsletter



Volume 30 Issue 3 March 2015

**Fort Worth Decorative Painters is a Chapter
of the Society of Decorative Painters
Celebrating 30 Years**



Y's Lines: Yvonne Lowrie, President 2015

yvonnelowrie@juno.com 817-923-2901

What a fun time the chapter members had painting the skiing snowman taught by LaRue Hughes last month. He skated across the tote bags and into our hearts.

Not sure if that is what caused the weather to be unpredictable the last week of January but the Board Meeting and Let's Paint Together Saturday were canceled/postponed. However Spring must be around the corner - Day Light Savings Time begins March 8th!

I will be teaching the March project of a Monarch butterfly. In real life they will soon be flying North from Mexico across Texas to Canada. Some members are painting on Memory Boxes. A perfect design for the project.

Judy Wallis is chairing the Memory Box project this year. She will have boxes available at the meeting as the hydrangea design and folk art flowers taught at future meetings will adapt well for the boxes.

Happy Painting! Yvonne

Meeting is March 16, 2015

6:00 Social 6:30 Meeting



Happy St. Paddy's Day



FWDP supports the Society of Decorative Painters. Dues are \$50/year. You must be a member of SDP to belong to FWP.
Visit the website at: www.decorativepainters.org

Sunshine—Larue Hughes

Kindness-----"Play it Forward"

During a time of economic crisis and depressing news, two students at Purdue University decided to lift the spirits of people on campus with some encouraging words. For two hours every Wednesday afternoon, they stood along a busy walkway holding a large "Free Compliments" sign and saying nice things to everyone who passed by. "I like your red coat." "Cool snow boots." "Very nice smile." Some students said they deliberately walked past "the compliment guys" every Wednesday just to hear a kind word.

We all need a kind word! . Remember those who are not with us with a phone call or card. It was wonderful to see Jeanette looking so well at our Feb. meeting. Continue to pray for her as well as Jan McCleery and Bettejo Kenaston.

If you know of anyone else who needs a card, please call me.

LaRue Hughes
817 834-5048, cell 817-269-7049

Hospitality—Pam Martinez

A BIG thank you to all who participate by supplying items for our Hospitality Table each month. We are a little short on non-sweet items for March.

Sharlene and I will bring non-sweet items.

Armida, Beth and Yvonne will bring sweets.

Needed are at least two other non-sweet dishes.

Remember our hospitality table is only as great as our great members make it.

Always, thank you all for all your help.

Pam

Membership—Mary Helen Horne Monthly Raffles—Sharlene King

We are off to a great year for Fort Worth Decorative Painters.

I hope we have a few more paid memberships before I put the roster together.

Please if you have not paid your \$20.00 membership for 2015 send it to me now.

Mary Helen Horne, 7707 Albany Lane, Arlington, TX. 76002

I will be talking pictures one more month in March. Please come prepared for a picture. It is very nice for new members to be able to learn our names by looking at a picture.

Thanks,
Mary Helen

We had some great raffle items last month! Thanks Pam, Nancy, Dusti & Carolyn.

March raffle items will be donated by:

Yvonne Lowrie

Mary Helen Horne

Juanita Munoz

Carolyn Martchenke

Sharlene



Items for Newsletter

If you bring a homemade food item to the meeting, please share it.....bring me a copy or send by email so I can put it in the newsletter.

Programs


PROGRAMS By Beth Stodieck

Yvonne Lowrie will be teaching us a butterfly in March. She suggests a background of our choice about 8" in diameter basecoated in a medium dark color. Yvonne's was a medium dark green. The project will just be the butterfly, not the flowers shown on her original piece. You have plenty of time to choose the perfect surface but if you still have no idea what to paint this project on, how about bringing a memory box and donating it to one of our hospitals. I know the parents who receive them would be delighted with this design.

And don't forget to be looking for a surface for the hydrangeas we'll paint in April. It can be any large, round, oval or rectangular wooden or metal surface of your choice, such as a large cheese box, metal tray, canvas, etc., 14" W or larger. You will be doing some basecoating on it before you come to class so you might want to start looking now.

February Meeting Photos





**Saturday Special
Flutterbys and Flowers
with Nancy Genetti**

*April or May Date to be announced
Watch your newsletter and
And your inbox for confirmed date*

Grace United Methodist Church of Ft. Worth
Clover Lane, just west of downtown,
exit Montgomery St.
1 LONG block on Westbound service road.
Turn right at the stop sign. 1 block N of I-30
9 a.m. to 4 p.m.

\$20, including lunch, payable **IN ADVANCE ONLY**
to Dusti Dancer

Friends, Co-workers, Family, New painters

ALL Welcome!

**See Photos and supply information
in February Newsletter**

Treasurer's Report- Carolyn Martchenke

December 31, 2014

Checking	5,481.53
Savings	5,207.95
Total Checking/Savings	10,689.48

Birthdays

March Birthdays

Jeanette Johnson	Mar. 2
Yvonne Lowrie	Mar. 4
Marc Wrisley	Mar. 7
Shirley Weisman	Mar. 30

April Birthdays

Pam Martinez	Apr. 13
--------------	---------

Have a Little fun....sent in by Beth

<http://www.xrite.com/online-color-test-challenge>

A link to a color hue test by Pantone. Several different groupings of colors and you have to put them in order of hue. It was really fun.



Don't Forget
Daylight Savings Time
....spring forward on
March 8

This appeared in the July-August
1983

issue of The

Decorative Painter (hilarious):

Ode To My Wife The Tole Painter by
Mollie Perry

She learned to paint on Monday.

Her strokes were going fine.

She forgot to thaw our dinner,

So we went out to dine...

She painted daisies Tuesday.

She says they are a must.

They really were quite lovely.

But she forgot to dust...

On Wednesday it was strawberries.

She says the blending's fun.

What hi-lites! What shadows!

But the laundry wasn't done...

Her apples were on Thursday.

So juicy, bright and red.

I guess she really was engrossed,

She never made the bed...

It was violets on Friday.

In colors she adores.

It never bothered her at all,

The crumbs on all the floors...

I found a maid on Saturday.

My week is now complete.

My wife can tole the hours away.

The house will still be neat.

Well, it's already Sunday.

But don't call me a saint.

I cursed #X! I raved XXX! I ranted !!

The maid had learned to paint!

Minutes—February 16, 2015

Fort Worth Decorative Painters Minutes of Chapter Meeting February 16, 2015

The meeting was called to order at 6:30 pm by President Yvonne Lowrie. Following items were discussed:

Announcements:

Minutes: Minutes approved as printed in newsletter.

Programs: Tonight LaRue will be teaching a skating snowman on fabric. March will be Yvonne teaching monarch butterfly on a surface about 8" x 8". Pattern will be in newsletter. April will be hydrangeas by Beth.

Membership: Chapter dues are due now. Will be taking photos for directory.

Treasurer's report: **Sharlene moved to accept the proposed budget as printed with the one change of**

rental to 700.00. Seconded and approved.

Newsletter: Deadline is February 24.

Quarterly Saturday Paint-in: Dusti has found another location for our Saturday paint-ins, at a lesser expense. Need 17 to break even. Show of hands of those coming on February 28. 13 were anticipating coming. Discussion was held to have 3 Saturday paint days and one seminar instead of 4 Saturday paint days and one seminar. Decided by membership to cancel one of the 4 for the year with May being the first choice to eliminate. **We will now have February – August – November and the seminar in June. Peggy moved to accept this change and Pam seconded. Motion passed.** It was suggested a note be emailed to prior members.

from directories. Nancy made an announcement for the Feb. 28th paint in. Bring any kind of fabric glitter you have. Might want to bring stencils and stamps.

Christmas Party: No report

Hospitality: Members were thanked for the food & drinks brought tonight. List going around for next month. Members requested Potato Casserole recipe be put in newsletter.

Memory Boxes – Still ongoing – boxes going to Harris Southwest and Cooks.

Monthly raffle: Sharlene thanked those that brought raffle items tonight. She asked for volunteers for next month.

Sunshine: Jeanette Johnson visited for a few minutes at the meeting. So good to see her.

Old Business:

Meeting Adjourned at 7:05 for painting with LaRue.

Respectfully submitted,
Nancy Genetti
Recording Secretary

2015 Board

Elected Officers:

President:	Yvonne Lowrie
Vice/Program/Pres. Elect:	Beth Stodieck
Vice/Membership/Directory:	Mary Helen Horne
Secretary/Newsletter:	Nancy Genetti
Treasurer:	Carolyn Martchenke

Committees:

Christmas Party:	Connie Alexander
Hospitality/Table Attendant:	Pam Martinez
Monthly Raffle:	Sharlene King
Website/Publicity:	Suzane Godley
Parliamentarian:	Armida Guzman
Saturday Paint-Ins/Seminar:	Dusti Dancers
Sunshine/Birthdays:	LuRue Hughes
Memory Boxes	Judy Wallis

Waiting on Photo

2015 Officers



Happy Spring

Christmas Party—Connie Alexander

The theme for this year's Christmas Party will be Angels. There are several new books out with wonderful angel ornament shapes and patterns. Remember your ornament should either be an angel shape or have an angel painted on a different surface. If you have already signed up for a seat at a table, (payment will be done later) please offer to assist your Table Leader in painting the centerpiece and favors. There is so much you can do with this theme, so feel free to go all out.



Wildflowers Seminars

Wildflowers—Janice Miller (April 17-18)

Location: Tom Bean Methodist Church

Time: 9 - 4

Cost: \$35.00 per day

Sent money to Dee Dow: 7083 FM1753, Denison, TX 75021.

Ddow4279@sbcglobal.net

For more information contact Carol Reichelt 903-892-9592 rodcar1102@aol.com



Project 1 - Friday

Janice will provide solar screen with the pattern on for 8.50, must be ordered and paid for by Our March meeting (3/16/15). If using your own screen or another surface the size is 14x24.

Project 2 - Saturday

Original painted on beige shirt



Judy Westegaard (August 14-15)

Yellow Rose Seminar

Yellow Rose Chapter invites you to a seminar with Shara Reiner on March 28 and 29, 2015. The cost is \$40 per day plus \$10 each day for a box lunch should you elect to purchase a lunch. Please contact Sharron White at 469-774-4181 or email sharron-white2007@gmail.com if you have an interest in joining us for this seminar taught by a delightful and fun teacher.

Snow Santas is approx. 14 by 14 inches

Fall tray is 12 by 18 inches.. You will supply your surface of choice. Packet and prep instructions will be provided once you have signed up

I look forward to hearing from you

Sharron White

Saturday Project



Sunday Project



March Project—Monarch Butterfly—Yvonne Lowrie

MONARCH BUTTERFLY

Adapted by Yvonne Lowrie from Chicinda and Pat Hooper

Paint Colors: Basecoat: Avocado Green, Hauser Dark Green, Hauser Light Green or
Americana Winter Blue, White, Sapphire or favorite sky colors

Monarch: Light Buttermilk, Yellow Light, Burnt Orange, Black, White

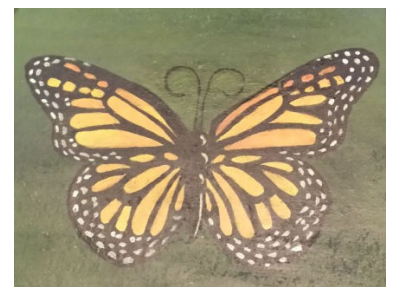
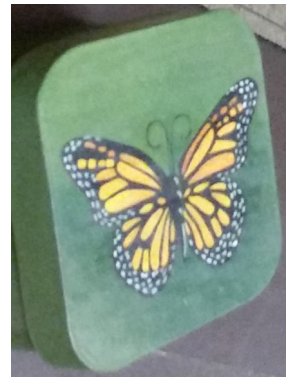
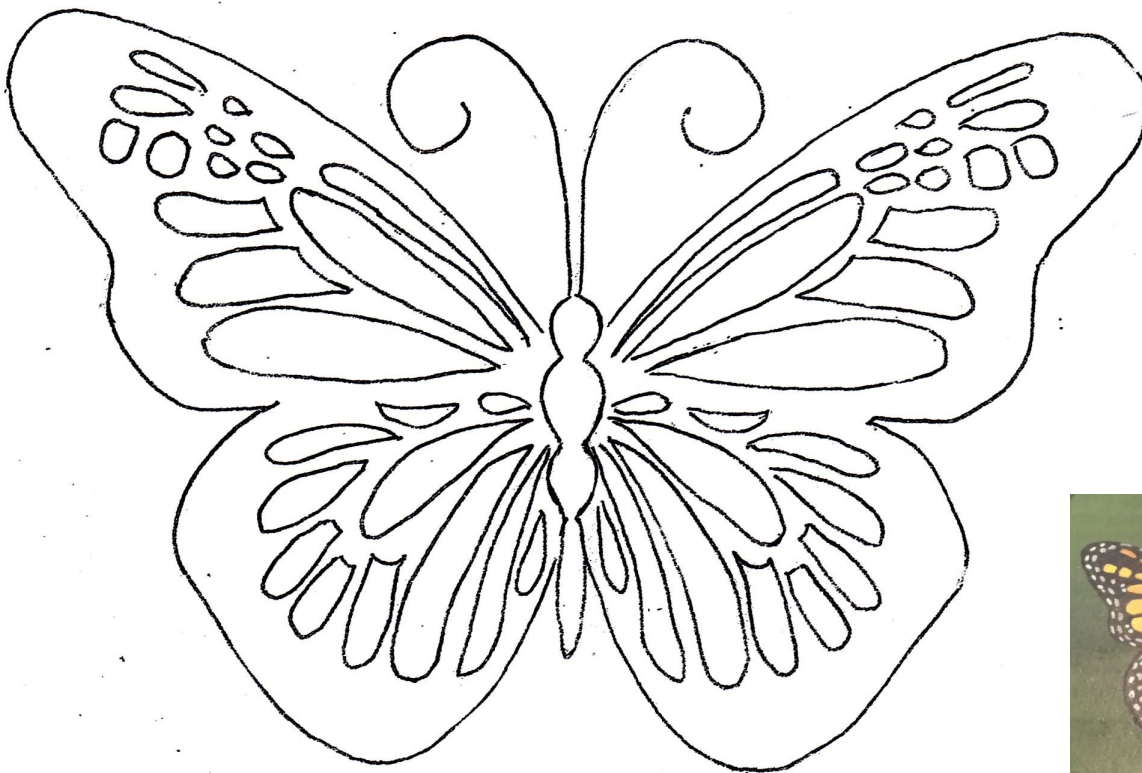
Preparation:

Sand, seal, sand wood surfaces. Papier-mache sand if needed. Canvas needs no prep.

Paint with Avocado or Winter Blue using a 1" wash brush. While still wet and with same dirty brush, wash the lower right with Hauser Dark or Sapphire. Between the colors move the brush in all direction to give a mottled look. On the upper left of Avocado use Hauser Light Green or the White for the sky moving the brush in all directions for a pleasant fading of color.

When completely dry apply pattern with transfer paper – just the outline of the butterfly – all details will be transferred later. Fill in with Light Buttermilk. The pattern can be centered or at angle according to the size of the surface.

The rest will be done in class.



SDP Corner



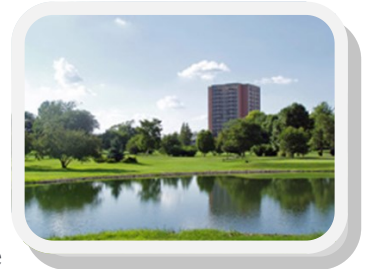
The Conference Special is here!

December 19: Download the 2015 Conference Special to preview our classes and special events. This can be printed at home or viewed electronically.

[Go to DecorativePainters.org](http://DecorativePainters.org)

You can order a printed copy of the Conference Special.

You can also browse the classes online by day or medium.



May 11-16: Join your fellow painters for the 43rd SDP International Conference & Expo at the Pheasant Run Resort in St. Charles, Illinois!

Our team is hard at work finalizing details and ensuring you will have a great time with us in St. Charles.

We look forward to continuing to provide you with great networking events, the latest designs, art education, access to new web features, and stories from your chapters and friends.

Thanks for painting with us! SDP

Bluebonnet Seminar

Bluebonnet Chapter invites you to a seminar with Rosemary West. She is teaching her unique technique on a repurposed silver coffeepot, teapot, or surface of your choice. ALL GUESTS CAN SIGN UP NOW BY CONTACTING DIANA PFAU. Make checks payable to : Bluebonnet

WHEN: Thursday March 26 & Friday March 27

WHERE: Bob Duncan Community Center

2800 South Center

Arlington, TX 76010

COST: \$90 (with lunch)

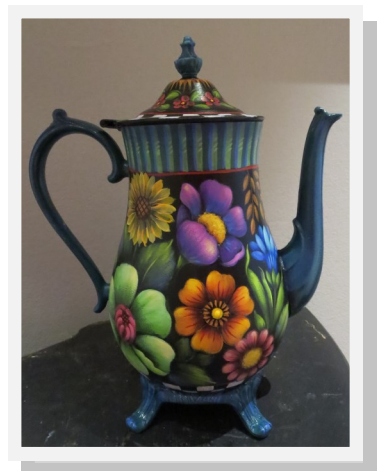
\$70 (no lunch)

TIME: 9:30-4:30 (Rosemary is a morning person so we will begin painting promptly at 9:30!)

Here is the best homework ever assigned-GO SHOPPING-at every Goodwill, Salvation Army, junk store, thrift shop you can find. Hint: a fair price for a vintage silver coffeepot is between \$10 & \$15 dollars.

Happy hunting! I can't wait to see your "finds"!!!

Any questions? dipaints@hotmail.com



SCHARFF BRUSHES ORDER INFO

I have heard back from Scharff and they DO still offer the discount program for Chapters IF we have an order of \$300 retail (\$180 at discount price) or more. If 10 members order \$30 each retail (\$18 discount price), we would have enough for an order. I don't think we could do this often but maybe once or twice a year if there is enough demand. Your discount will be 40% off the retail price and everyone will be asked to add \$3 to your order to cover shipping.

Here's how it will work this time. The link to the Scharff website is below. Go to that site to look at brushes. Use the form I've included to place your order. Leave the "Member Cost" column blank. Bring it to the FEBRUARY MEETING. During the meeting I will tally the orders, figure your final cost and get a check from you if we meet the minimum order. Make your checks out to FWDP and we will send one check for all of us. Scharff has offered to bundle each order separately so they will be easier to distribute at the next meeting. Any extra funds we have left over from shipping will be kept by the Chapter.

Lots of you were asking about the brushes I used at the meeting this week. They were all made by Scharff and I love them. You may find their brushes at <http://artbrush.com/shop/home.php> Below are some of the brushes I have bought from them and notes for some of them. I have bought many more than the ones below but don't have series numbers in front of me now. I have never been disappointed in a Scharff brush.

If you will fill out the order form on the next page, you can bring the order form to the February meeting, I will figure out costs, including the Chapter discount. During the meeting you can write the Chapter a check before you leave and I will place the order. We will add \$3 per order to cover shipping.

White Bristle Dome Set - Series 245 - SKU: 9206

White Bristle Dry Brushing Set - Series 210, 220, 250 - SKU:9208

White Bristle Moon Filbert Set - Series 222 - SKU 9210

Series 100, 102, 105, 110, 115, 120, 125 - Great oil brushes

Series 210, 215, 220, 225, 235, 237, 240 - good bristle brushes for difficult surfaces

Series 285 - white nylon moon scrubber - SKU 1285-001 - The only use I have found for these brushes is to scrub out mistakes on watercolor. They are too stiff for acrylic or drybrushing.

Series 425 - Golden Taklon Moon Filberts - Good for drybrushing on acrylic surfaces

Series 850 - Mold Duster - Great mop brush for blending like Lynne Andrews does.

Series 1440, 1450, 1460 - Ronnie Bringle series - good acrylic detail brushes.

Brush Tips from Scharff:

- Always clean your brushes immediately after every use.
- Never let the paint dry on your brush.
- Never use the cleaning tubs with a rippled bottom. This is not the proper way to clean your brushes. It is a very good way to ruin your brushes.
- Do not let a brush stand in water or cleaning solvents for any length of time. This will cause the liquid to leach into the handle and swelling will occur in the wood. This will lead to the paint chipping off and the ferrule becoming loose.
- Always clean your brushes with the appropriate solutions. Acrylics can be cleaned with a mild household liquid detergent. Many oil and lacquer materials will have a recommended cleaning solution for their particular products.
- After thoroughly cleaning your brushes, store them lying flat or with the ferrules up. Never store your brushes on the hair.
- A light coating of hair spray can be applied to the bristles to help hold the brush in shape for extended periods of storage.
- Take care of your brush and it will perform well for many uses.

2015 Meeting Projects

January 2015

All My Friends Are Flakes
by Beth Stodieck



SURFACE: Solar window screening or large surface of your choice.

February 2015

Skating Snowman Tote Bag
by LaRue Hughes



SURFACE: Black tote bag or the surface of your choice.

March 2015

Acrylic Monarch Butterfly
by Yvonne Lowrie



SURFACE: of your choice

April 2015

Hydrangea Box
by Beth Stodieck



SURFACE: large, round wooden or metal surface of your choice, large cheese box, metal tray, canvas, 14" or larger surface will work, basecoated and stripes painted on before class

May 2015
Floral Tote Bag
By LaRue Hughes



SURFACE: Tote Bag or surface of choice

September 2015
MakeItTakeIt
IT'S A SURPRISE!

October 2015
Halloween Paving Brick
by Lori Woodbridge

SURFACE: scalloped edge, concrete, landscaping brick

November 2015
Lacework Ornament
by LaRue Hughes



SURFACE: Glass or plastic ornament, basecoated in the color of your choice.
Sample is large puffed plastic disc.

Recipe Corner

CHOCOLATE MAYONNAISE CAKE

Posted on April 22, 2013 by The Southern Lady



This cake has been around for a long time. I can remember my mother making it years ago but she used salad dressing in hers instead of mayonnaise. It is so easy to make and so good. Wonderful with coffee and a great dessert or snack anytime.

2 cups all-purpose flour

2 teaspoons baking soda

1 cup sugar

1/2 cup 100% pure cocoa

1 1/2 teaspoons vanilla extract

1 cup water

1 1/4 cups mayonnaise (You can use low-fat)

1/2 to 1 cup nuts of your choice, Optional

Whisk together flour, baking soda, sugar, and cocoa. In another bowl whisk together the vanilla extract, water, and mayonnaise until it looks like milk. Pour mayonnaise mixture into flour mixture and mix well with a spoon. (Could use mixer, too). Fold in nuts. Pour into a well-sprayed Bundt pan. Bake in preheated 350 degree oven for 40-45 minutes checking for doneness. (You can make this in a 9 x 13 pan but cut the cooking time to 30 to 35 minutes.) Let cool about 10 to 12 minutes before removing from pan. (You could also add chocolate chips to this cake). Frost with your favorite icing or sprinkle with powdered sugar. This cake is good with cream cheese frosting recipe below, too. Great with ice cream or whipped cream as well.

Members would like the potato casserole from the February meeting. If you brought it would you please send me the recipe. Thanks.



More February Meeting Pictures



Fort Worth Decorative Painters

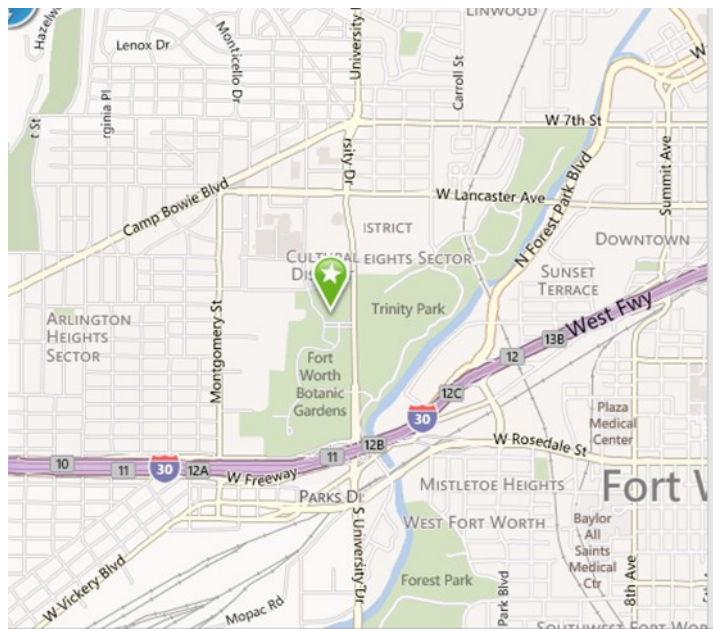
Nancy Genetti
Newsletter Editor
117 Eton Drive
Richardson, TX 75080

Facebook:

Fort Worth Decorative Painters (FWDP)

www.fwdecorativepainters.com


Next Newsletter Deadline
March 24, 2015



FWDP Meets the Third Monday of February, March, April, May, September, October & November.

January Meeting 4th Monday and the Christmas Party 2nd Monday in December.

At the

**Botanical Gardens
3220 Botanic Garden Blvd.
Fort Worth, TX 76107**

2015 Dates to Remember

March 16 - Chapter Meeting
6:00 social time, 6:30 pm Business Meeting
Project: Monarch Butterfly with Yvonne

April 20 - Chapter Meeting
6:00 social time, 6:30 pm Business Meeting
Project: Hydrangea Box with Beth

April or May—Paint With Us Saturday—
Butterfly & Floral shirt with embellishments
with Nancy (date to be determined)

May 18 - Chapter Meeting
6:00 social time, 6:30 pm Business Meeting
Project: Tote Bag with LaRue

June 26 & 27 - Laurie Speltz Seminar

August 15- Paint With Us Saturday—
Design a Suitcase/Tote w/ Beth and Dusti

September 21- Chapter Meeting
6:00 social time, 6:30 pm Business Meeting
Project: Make It Take It

October 19- Chapter Meeting
6:00 social time, 6:30 pm Business Meeting
Project: Halloween Paving Brick with Lori Woodbridge

November 7 - Paint with Us Saturday—
Tentatively Sculpty Santas w/ Jan McCleery

November 16—Chapter Meeting
6:00 social time, 6:30 pm Business Meeting
Project: Ornament with LaRue

December 14—Christmas Party