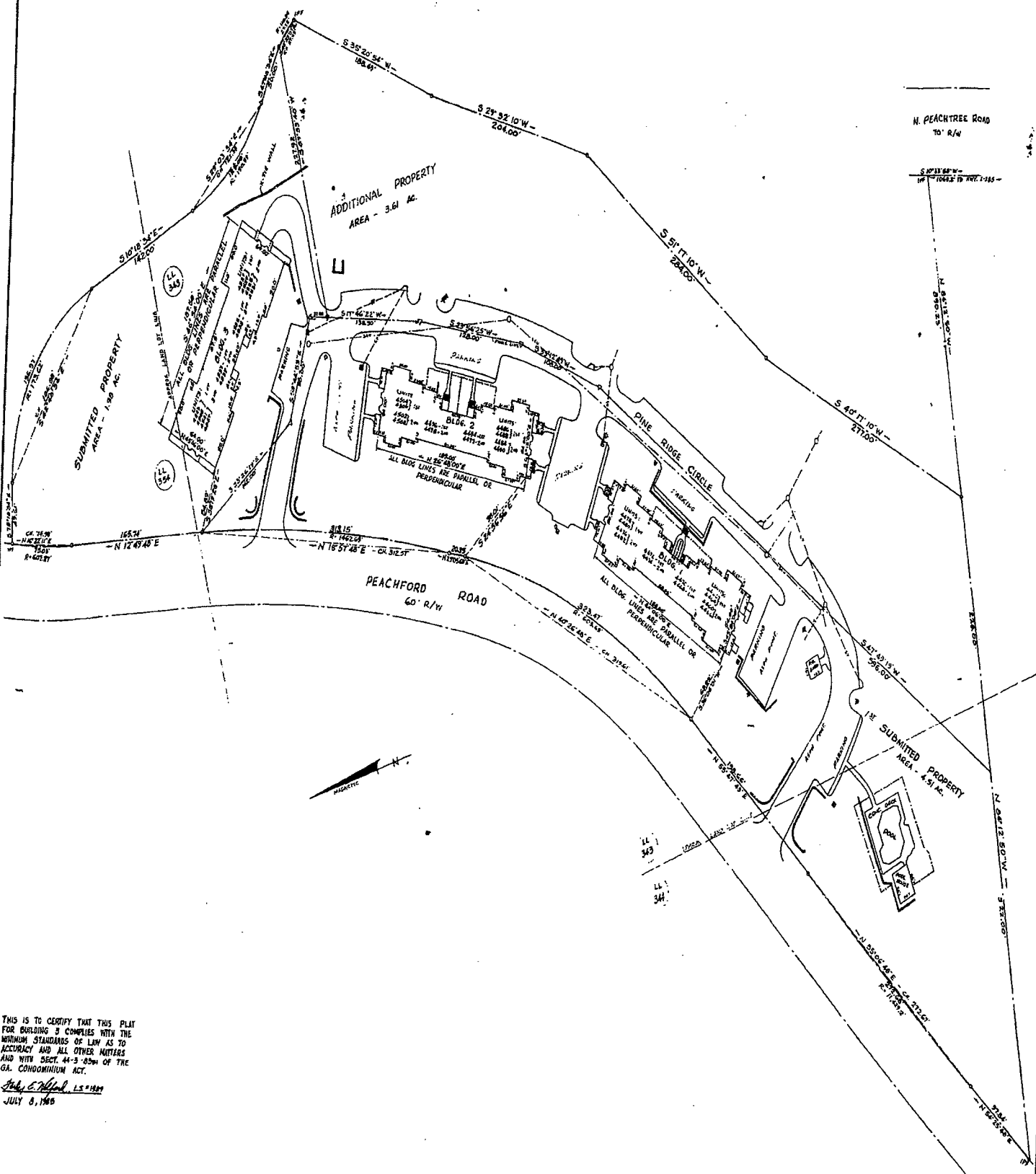


THE UNRECORDED REGISTERED LAND SURVEYOR HEREBY CERTIFIES THAT THIS PLAT COMPLIES WITH THE MINIMUM STANDARDS OF LAW AS TO ACCURACY AND ALL OTHER MATTERS AND WITH SECT. 44-3-85(4) OF THE GA. CONDOMINIUM ACT.  
*Fairley E. Wolford*  
 FAIRLEY E. WOLFORD, RLS '88



AS-BUILT SURVEY OF  
 DUNWOODY RIDGE - A CONDOMINIUM  
 LAND LOTS 343, 344 & 354  
 18TH DISTRICT  
 DEKALB COUNTY, GEORGIA

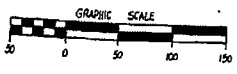
Phase I Plat



THIS IS TO CERTIFY THAT THIS PLAT FOR BUILDING 2 COMPLIES WITH THE MINIMUM STANDARDS OF LAW AS TO ACCURACY AND ALL OTHER MATTERS AND WITH SECT. 44-3-82 OF THE GA. CONDOMINIUM ACT.  
*Foley E. Wolford, L.S. 1188*  
 JULY 8, 1985

COND.  
 Filed and Recorded in Plat Book 5 Page 156, This 16 day  
 of July, 1985 at 12:30 PM Wolford C. Brown Clerk.

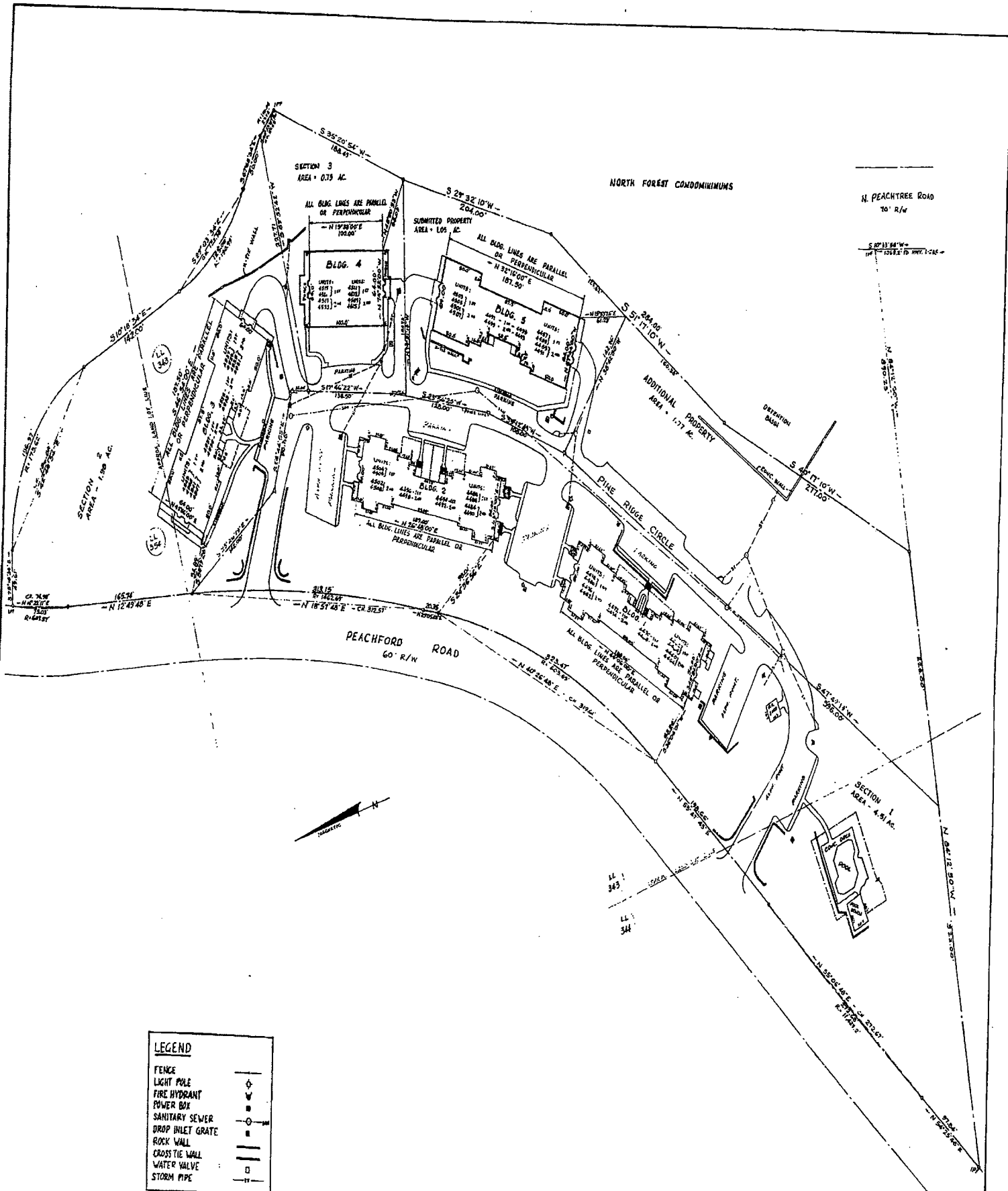
COND.  
 Filed and Recorded in Plat Book 5 Page 118, This 16 day  
 of July, 1985 at 12:30 PM Wolford C. Brown Clerk.



THE UNDERSIGNED REGISTERED LAND SURVEYOR HEREBY CERTIFIES THAT THIS PLAT COMPLIES WITH THE MINIMUM STANDARDS OF LAW AS TO ACCURACY AND ALL OTHER MATTERS AND WITH SECT. 44-3-82 OF THE GA. CONDOMINIUM ACT.  
*Foley E. Wolford*  
 FOLEY E. WOLFORD, L.S. 1188  
 WOLFORD ENGINEERING SERVICES  
 3796 CAMELOT COURT  
 TUCKER, GEORGIA 30084  
 (404) 938-7911

AS-BUILT SURVEY OF  
 DUNKHOODY RIDGE - A CONDOMINIUM  
 LAND LOTS 343, 344 & 354  
 18 1/2 DISTRICT  
 DEKALB COUNTY, GEORGIA  
 SCALE: 1" = 50'  
 DATE: NOVEMBER 26, 1984  
 REV. 5-23-85: 7-8-85

Phase II Plat



LEGEND	
FENCE	—
LIGHT POLE	⊙
FIRE HYDRANT	⊙
POWER BOX	⊙
SANITARY SEWER	—
DROP INLET GRATE	⊙
ROCK WALL	—
CROSS THE WALL	—
WATER VALVE	⊙
STORM PIPE	—

FILED AND RECORDED IN COND. PLAT BOOK 6 PAGE 46 THIS 19 DAY  
 OF 1984 AT 10:00 AM. *Wolford E. Wolford* CLERK.

Filed and Recorded in Plat Book 55 Page 113, This 26 day  
 of 1984 at 10:00 AM. *Wolford E. Wolford* CLERK.

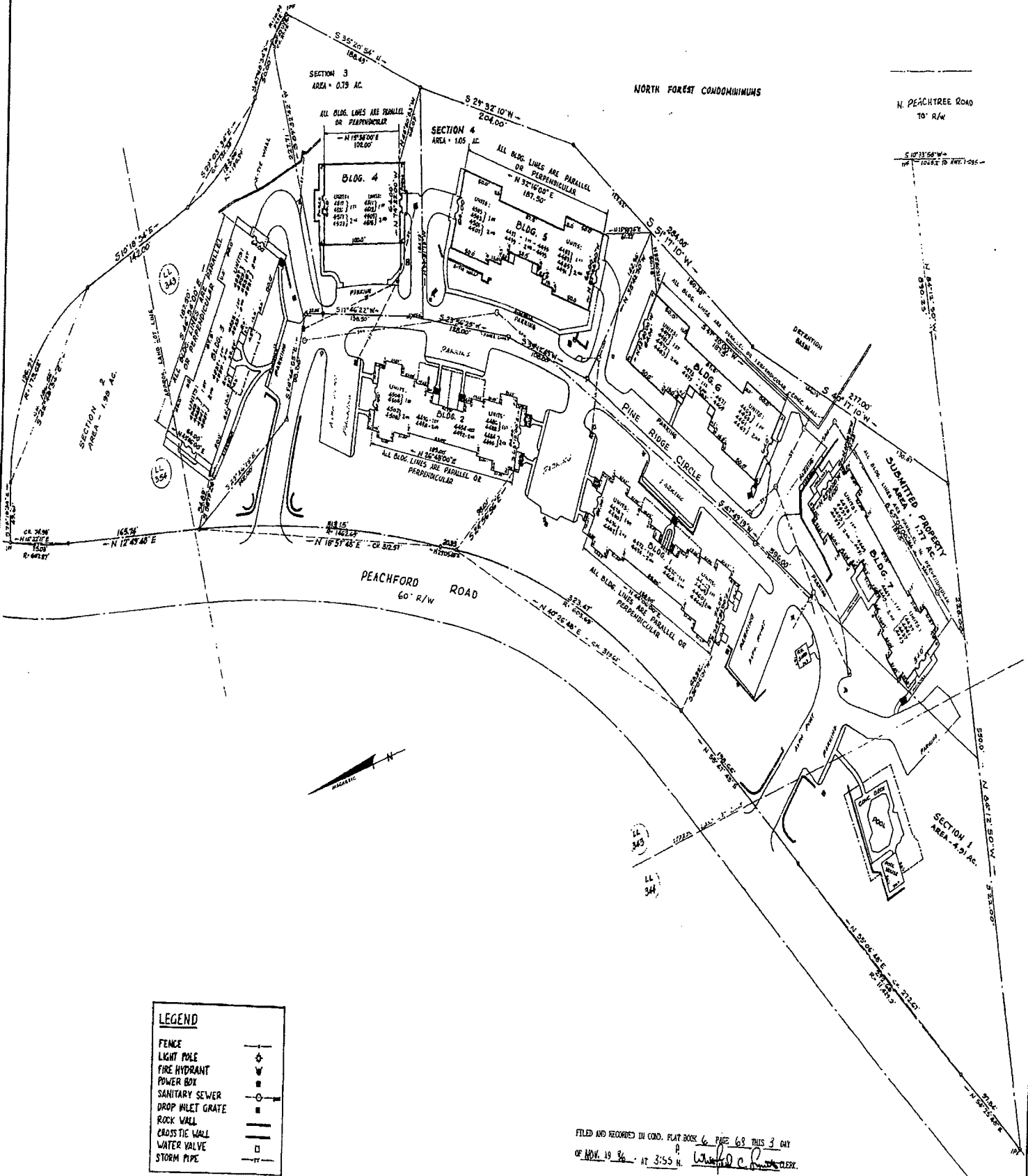


THE UNDERSIGNED REGISTERED  
 LAND SURVEYOR HEREBY CERTI-  
 FIES THAT THIS PLAT COMPLIES  
 WITH THE MINIMUM STANDARDS  
 OF LAW AS TO ACCURACY AND  
 ALL OTHER MATTERS AND WITH  
 SECT. 44-3-203(a) OF THE GA  
 CONDOMINIUM ACT.  
*FARLEY E. WOLFORD, RLS 1980*  
 WOLFORD ENGINEERING SERVICES  
 5796 CAMBLOT COURT  
 KENNESAW, GEORGIA 30144

AS-BUILT SURVEY  
 OF  
 DUNWOODY RIDGE - A CONDOMINIUM  
 LAND LOTS 343, 344 & 354  
 18<sup>TH</sup> DISTRICT  
 DEKALB COUNTY, GEORGIA  
 SCALE: 1" = 50'  
 DATE: NOVEMBER 26, 1984

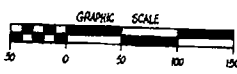
Phase III Plat

# CONDO. PLAT BK.6 - PAGE 68



LEGEND	
FENCE	—
LIGHT POLE	⊙
FIRE HYDRANT	⊕
POWER BOX	⊖
SANITARY SEWER	—
DROP INLET GRATE	⊙
ROCK WALL	—
CROSS TIE WALL	—
WATER VALVE	⊕
STORM PIPE	—

FILED AND RECORDED IN CONDO. PLAT BOOK 6 PAGE 68 THIS 19 DAY  
OF MAY 19 86 AT 11:04 A.M. *Wanda C. [Signature]* CLERK.



FILED AND RECORDED IN CONDO. PLAT BOOK 6 PAGE 68 THIS 3 DAY  
OF NOV. 19 86 AT 3:55 P.M. *Wanda C. [Signature]* CLERK.

THE UNDERSIGNED REGISTERED  
LAND SURVEYOR HEREBY CERTI-  
FIES THAT THIS PLAT COMPLES  
WITH THE MINIMUM STANDARDS  
OF LAW AS TO ACCURACY AND  
ALL OTHER MATTERS AND WITH  
SECT. 44-3-85(a) OF THE GA.  
CONDOMINIUM ACT.  
*STUB. S. [Signature]*

AS-BUILT SURVEY  
OF  
DUNWOODY RIDGE - A CONDOMINIUM  
LAND LOTS 343, 344 & 345  
18 D DISTRICT

Phase IV Plat