

REVELATION 12 SIGN - RED DRAGON

Collections > Constellations >

7 of 7



Layers >

- ☑ Sun
 - ☑ Mercury
 - ☑ Venus
 - ☑ Earth
 - ☑ Mars
 - ☑ Jupiter
 - ☑ Saturn
 - ☑ Uranus
 - ☑ Neptune
 - ☑ Pluto
- ☑ Sky
 - ☑ Overlays
 - ☑ Constellations
 - ☑ Grids
 - ☑ 2D Sky
 - ☑ Show Solar System
 - ☐ Field of View Indicators
 - ☑ 3d Solar System
 - ☐ Cosmic Microwave Background
 - ☑ Cosmos (SDSS Galaxies)

Delete Add Paste Reset

Name	Value

Time Scrubber

Time Series Auto Loop

WORLDWIDE TELESCOPE - SAME COVER UP 'ANOMALY'

September 22, 2017 - Eve of Sabbath of Return

13h 50m 44.0s -8° 13' 59.7"

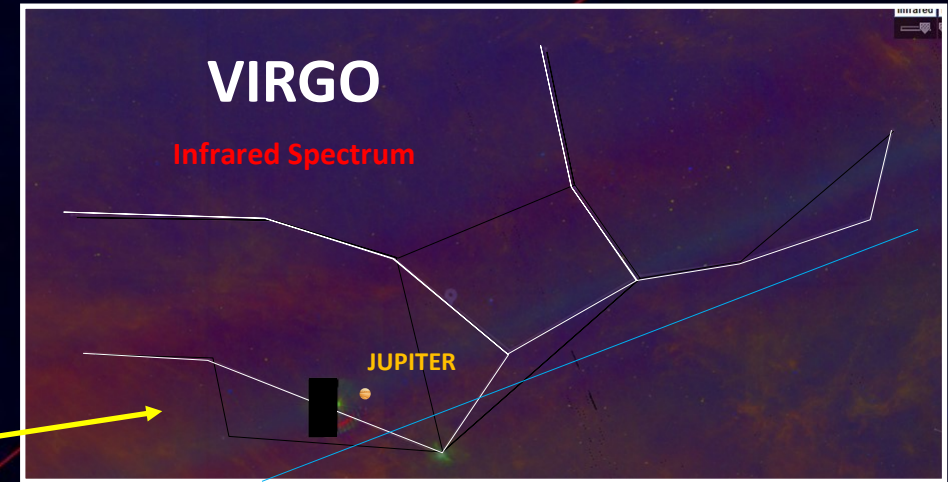
JUPITER

Moon

Same area patched-up as in Google Sky 'Red Dragon' anomaly.

ECLIPTIC

SPICA



The purpose of this illustration is to demonstrate that the GoogleSky 'cover-up' is also depicted in the Microsoft's *WorldWide Telescope* program. The quadrant where the 'Red Dragon' anomaly is patched-up in the constellation *Virgo* will be in front of *Jupiter* is positioned on the day that it is believed will astronomical fulfill the Revelation 12 Sign. The position of *Jupiter* on the 23rd of September, 2017 will coincide with the *Sabbath of Return*. It will also be when Jupiter is 13 days out from the delineation of the 'Womb' area of *Virgo* as some interpret the 'line of birthing' to have occurred on the 9th of September. This evidence is in no way asserting that such an anomaly is Planet X.



Look At: **Jupiter**

Composition & Some Graphics by **LUIS B. VEGA**

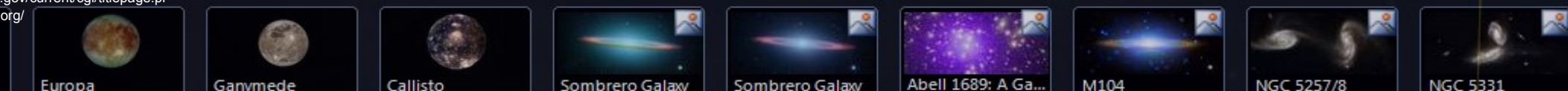
vegapost@hotmail.com
www.PostScripts.org

FOR ILLUSTRATION PURPOSES ONLY

MAIN SOURCES

IRIS: Google.com/SkyView.gsfc.nasa.gov/current/cgi/titlepage.pl

worldwidetelescope.org/



Context Search Filter: All 1 of 44

Virgo 15:23:21

RA: 13h35m30s
Dec: -08:21:47