
RailFX™

Aluminum Railing & Cable Systems

LED Lighting Strip



Installation Guide

Under Rail Lighting For RailFX Rail

DekPro™ EFFEX LED Low Voltage Lighting Strip

Materials needed for Installation:



Series 200 Top Rail (Top)



55" Light Strip



9' Quick Connects



60" Top Rail Lighting Infill

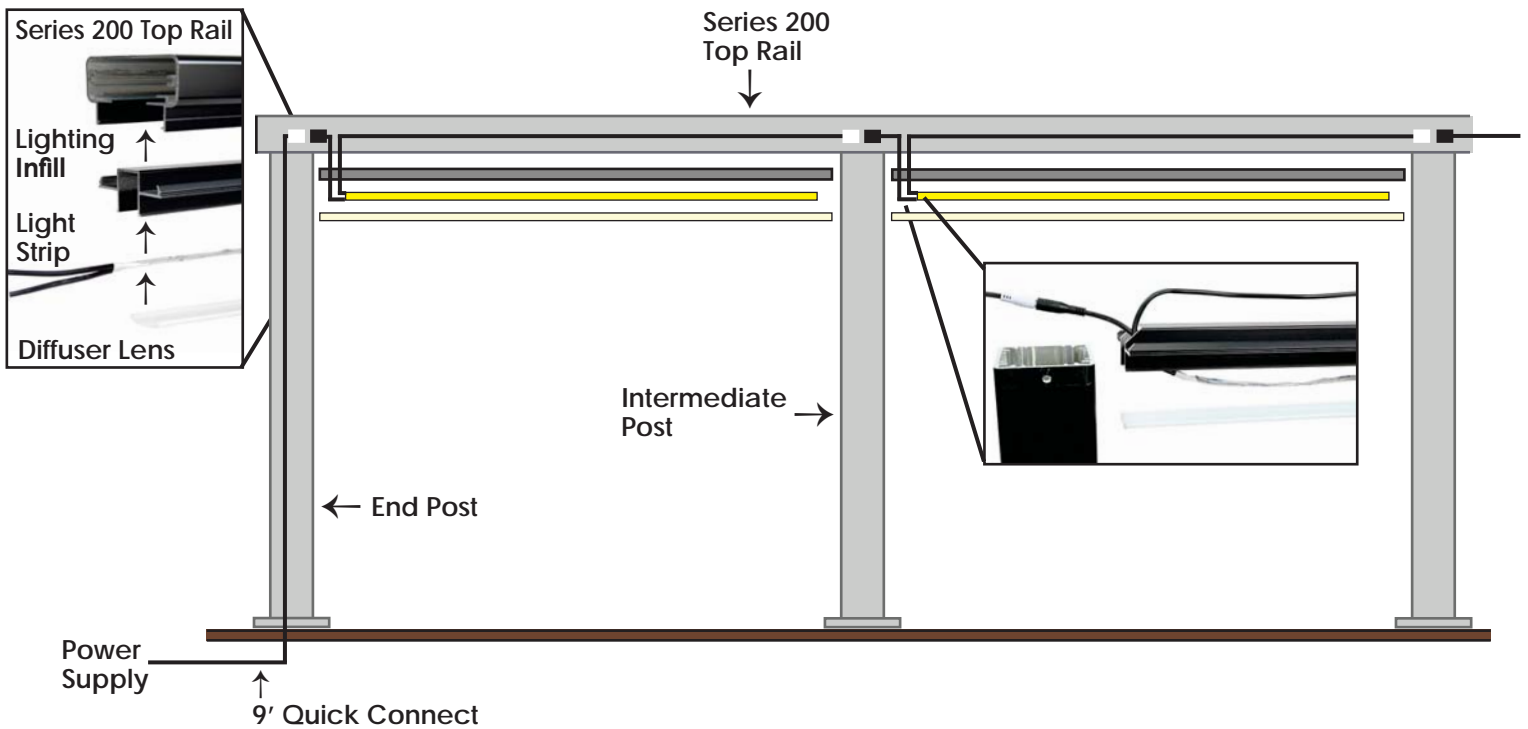


Transformer Kit



60" Diffuser Lens

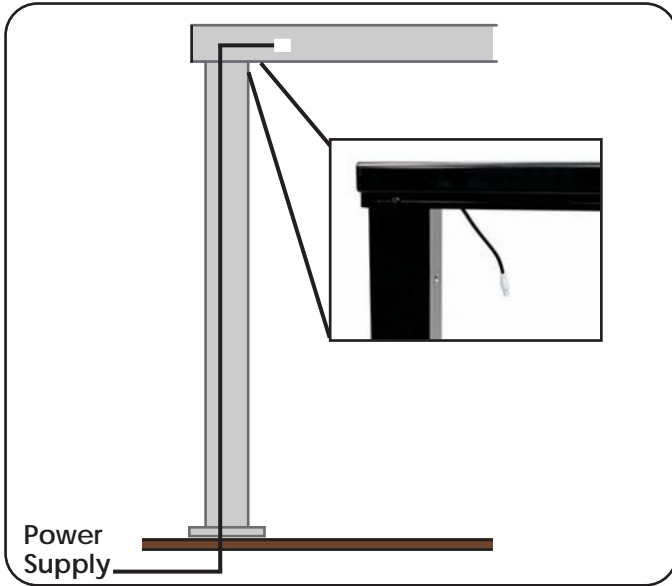
RailFX Lighting Overview



Before beginning to run low voltage wiring, posts and top rail framework must be in place. It is best to install lighting before stainless steel cable infill. This will provide for easier access to run the lighting components. If stainless steel cable infill is in place - Do Not tension the cable railing until lighting is installed.

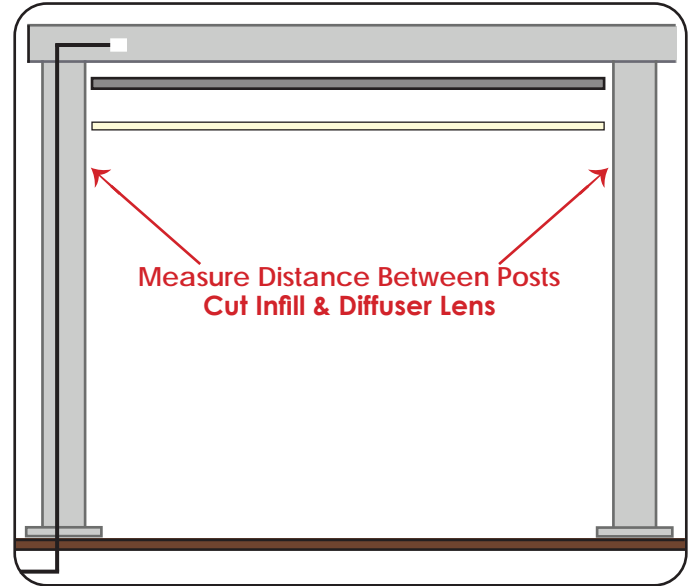
Under Rail Lighting For RailFX Rail

DekPro™ EFFEY LED Low Voltage Lighting Strip



Step 1: Run Wire Up First Post

Run wiring from the transformer to the first post. Fish the wire up the post so you have access to the white end plug. (It's best to do this during post installation or Top rail will have to be temporarily removed)



Step 2: Cut Infill Components to Size

Measure the distance between posts and cut lighting infill to that length. Ensure the cut for the aluminum infill is made on the end without the 45 degree notch for lighting. The diffuser lens can also be cut to this same length.



Step 3: Cut Strip Light to Length

- A.) Lay Strip Light into lighting infill to determine length of strip Light.
- B.) Strip light can be trimmed down in 2" increments on the non-wired end. (Must be cut on indicated cut line)

It is recommended to leave 2" - 3" between the end of the strip light and the post to avoid "Hot Spots"

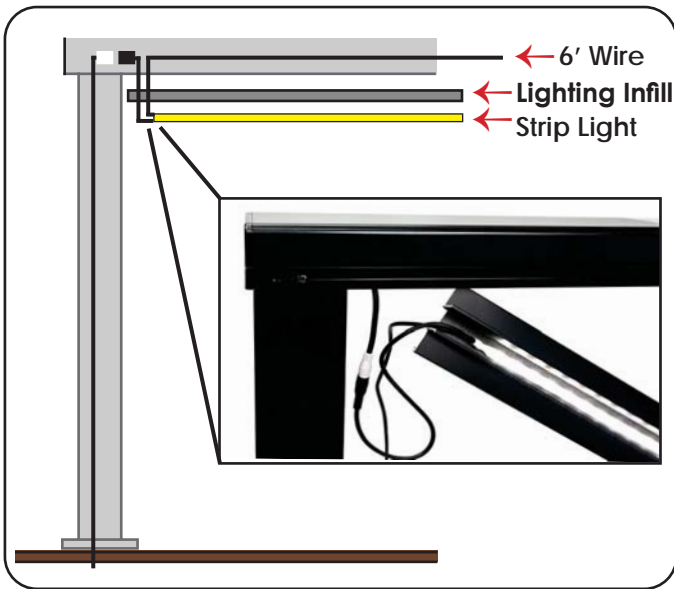


Step 4: Adhere Strip Light to Light Infill

With Strip light trimmed to length, remove backing to expose 3M adhesive. Adhere Strip light to lighting infill. Ensure the lighting infill has been properly cleaned with denatured alcohol and dried for best results.

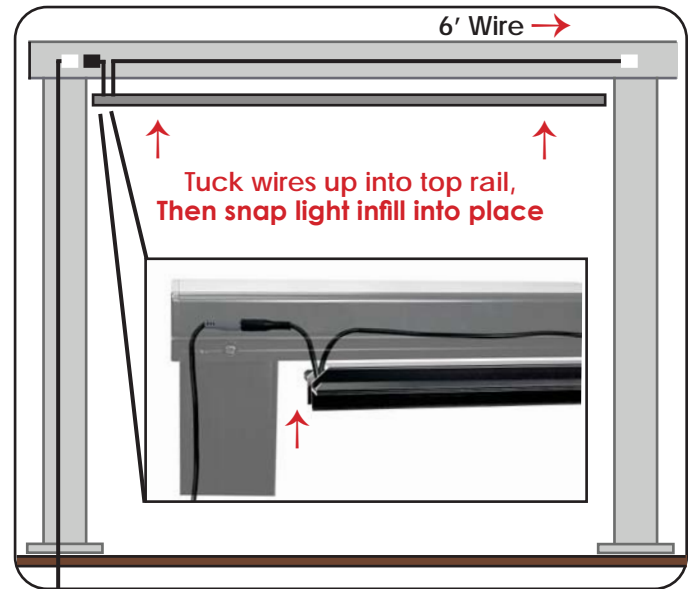
Under Rail Lighting For RailFX Rail

DekPro™ EFFEX LED Low Voltage Lighting Strip



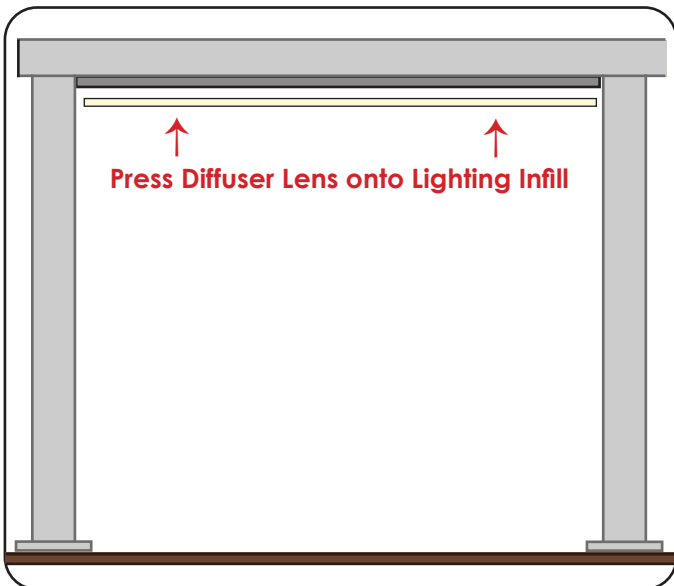
Step 5: Connect Wiring

Connect the shorter 12" wire from the strip light and ensure the lights are working properly once connected with the power source.



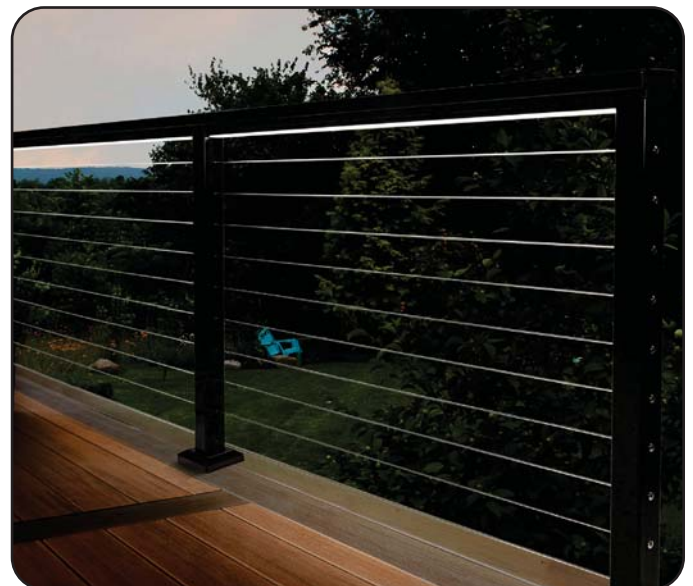
Step 6: Snap Lighting Infill into Place

With wires connected and lighting working correctly snap the lighting infill into the bottom side of the top rail. Run the 6' lead wire up and over the flat infill to the next post to continue lighting connections.



Step 7: Snap Diffuser Lens On

The diffuser lens can be snapped onto the lighting infill to complete the light installation. Continue this process until all lights are connected



Finished Look