

# Black Widow Bows

## MODEL X400

Handle section of Toxonite\* \$235.00

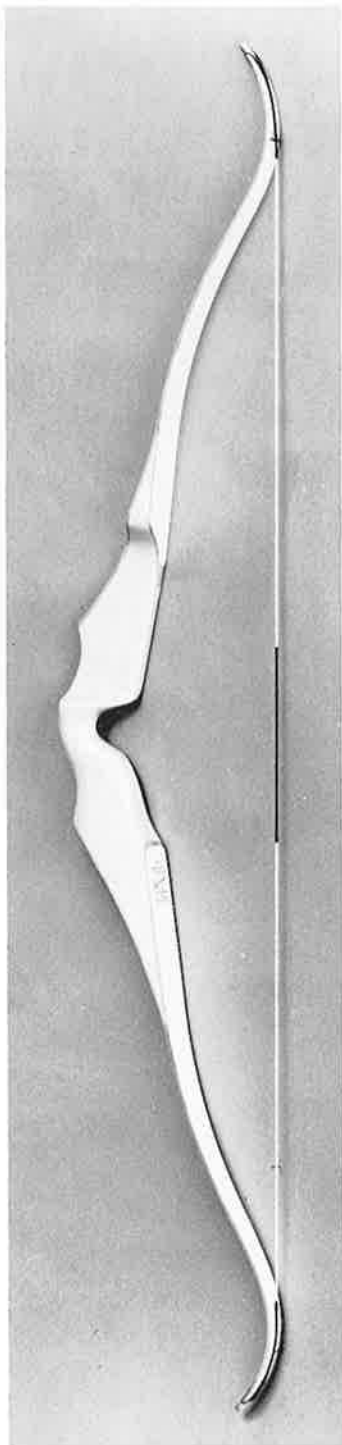
Deluxe padded bow case with X400 model.

In our more than thirty years in archery we have used and tested a great many different types and kinds of bows. We now say, without a doubt, that we believe the X400 and H450 are the finest bows in the world, the best ever made.

The stability of the X400, due to the design and the use of Toxonite in the handle section is almost unbelievable. It will save those all important few points in a round that are ordinarily lost because of a slight twitch or mistake in the bow or release hand. Once you try an X400 you will never be satisfied until you own one.

\*Toxonite is a beautiful ivory colored material made especially for us. It is made of hundreds of layers of linen like high specification fabric bonded with special resins under very high compression. It is the best and most expensive material now being used in any bow. Its cost is almost five times as much as other high compression material being used.

Actual weight of the bow in 68" is  $4\frac{1}{2}$  to  $4\frac{3}{4}$  pounds. In the 66",  $4\frac{1}{4}$  to  $4\frac{1}{2}$  pounds, and in the 64",  $3\frac{3}{4}$  to 4 pounds. Weight variations are due to the size and grip shape.



*Test a Black Widow Hunting Bow against any other bow for flight, speed, smoothness, stability and that driving power for the long shots.*

**MODEL HS60  
HUNTING BOW**

(at right)

**Length: 60"**

Brown-Tone hardwoods or Maple handle trimmed with contrasting tropical hardwood. Brown glass front and back

**\$79.50**

All Rosewood handle

**\$94.50**

A beautiful deluxe hunting bow with amazing speed and stability.

**MODEL H101  
HUNTING BOW**

(at left)

**Length: 60"**

Brown-Tone hardwoods or Maple handle trimmed with contrasting tropical hardwood. Dark glass front and back

**\$89.50**

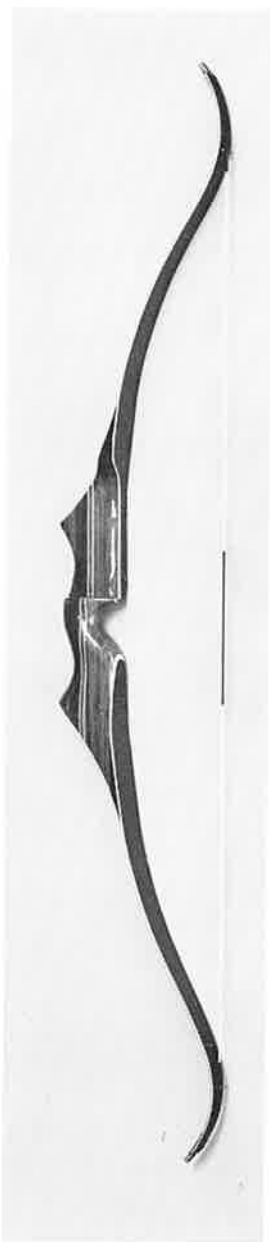
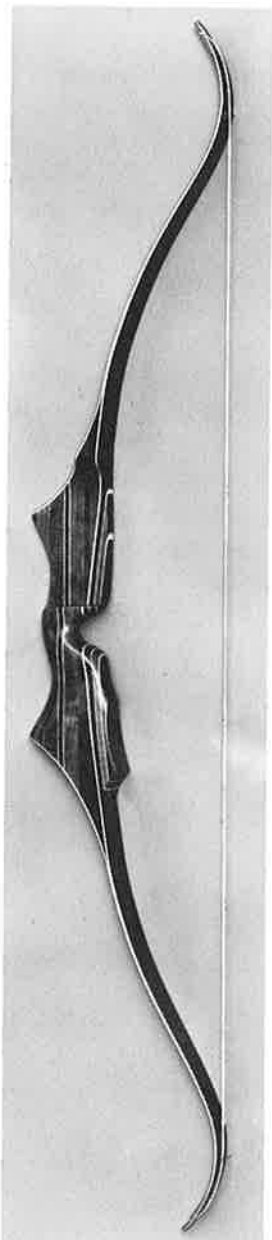
All Rosewood handle

**\$104.50**

One of the finest hunting bows ever made. Designed as a companion bow to our target model 101. It has great speed plus the smoothness and stability usually found only in target bows.

The H450, H101 and HS60 are not production-line bows. They are made with the same exacting care and craftsmanship in every detail as our most expensive target bow, therefore, they are higher in price than some but you will find they are worth it. There is pride in ownership of a fine handcrafted Black Widow Hunting Bow.

All three models have a full 6½" sight window for the hunter who prefers to use a sight.





*Black Widow Bows have won World Championships, many State, Regional and National Championships in the United States and other Nations around the World.*

### MODEL X200

(at left)

**Lengths: 64", 66" and 68"**

Brown-Tone hardwoods or Maple handle trimmed with contrasting tropical hardwood      **\$135.00**

All Rosewood handle      **\$159.50**

Deluxe padded bow case with model X200.

The deep deflex grip and massive stabilizing handle section makes the X200 one of the most beautiful of all bows and its action smooth as silk.

**Our "Brown-Tone" hardwood handle sections are native and imported hardwoods, or a combination of these, which makes a beautiful handle section in rich shades of browns to tan.**

### MODEL 101

(at right)

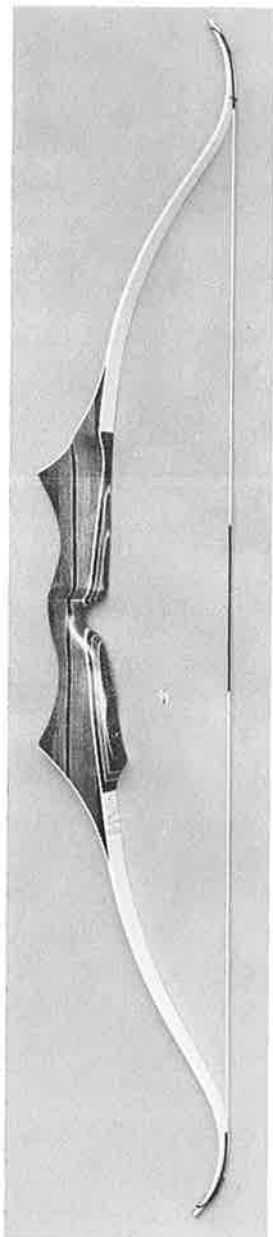
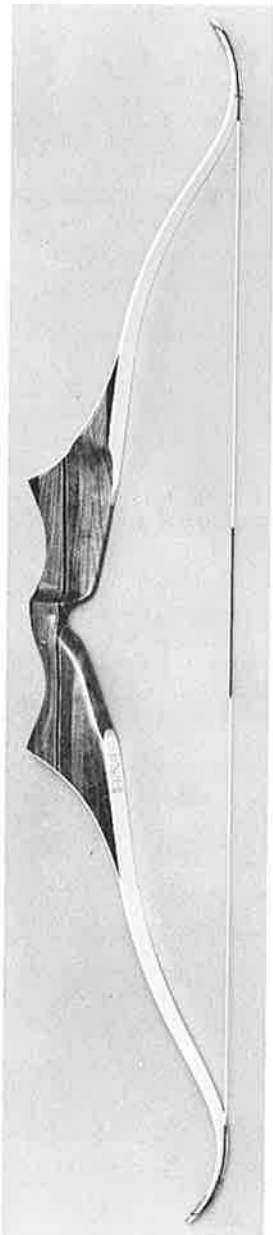
**Lengths: 64", 66" and 68"**

Brown-Tone hardwoods or Maple handle trimmed with contrasting tropical hardwood      **\$125.00**

All Rosewood handle      **\$149.50**

Deluxe padded bow case with model 101.

The 101 is the choice of many fine archers. It has speed, stability and a certain feel that is just right for them.



## MODEL X99

(at left)

Lengths: 64", 66" and 68"

Brown-Tone hardwoods or Maple handle trimmed with contrasting tropical hardwood **\$100.00**

All Rosewood handle **\$110.50**

The X99 is the work horse of the Black Widow bows. There are more X99's in use all over the world than any other Black Widow bow. (It was the first Black Widow model with the large stabilizing handle section.) It is still preferred by many archers over any other model.

When ordering, be sure to specify the handle wood wanted: "Brown-Tone" hardwoods, maple or rosewood.

## MODEL X300

(at right)

Lengths: 64", 66" and 68"

Maple or Brown-Tone hardwoods handle trimmed with contrasting tropical hardwood **\$125.00**

All Rosewood handle **\$139.50**

Deluxe padded bow case with model X300.

The X300 is a streamlined version of the X200. And is the result of requests from archers for a bow with the same deep deflex design without the physical weight of the X200.

AROUND  
*Black  
Widow*  
Bows  
THE WORLD

Black Widow Bows are available to archers around the world through our Dealers in twenty-four countries.

## MODEL X85

(at left)

**Lengths: 64", 66" and 68"**

Brown-Tone hardwoods or Maple handle trimmed with contrasting tropical hardwood **\$79.50**

All Rosewood handle **\$94.50**

For several years the X85 has been the choice of archers who want a fine bow in the medium price range. You must see this bow to appreciate its many fine features.

## MODEL TF

(at right)

**Lengths: 64", 66" and 68"**

Brown-Tone hardwoods or Maple handle trimmed with contrasting tropical hardwood **\$89.50**

All Rosewood handle **\$104.50**

Because of the many requests we are again listing the model TF for those who prefer a bow with the classic, traditional design.

Your Black Widow Dealer is:

AROUND  
*Black  
Widow*  
Bows  
THE WORLD

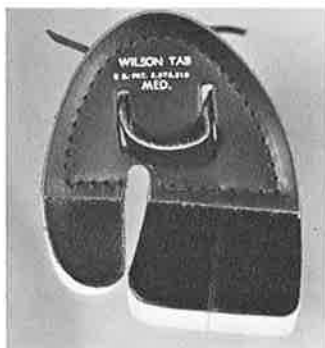
AROUND  
*Black  
Widow*  
Bows  
THE WORLD

**MODEL H450  
HUNTING BOW**  
Length: 60"



Handle section Toxonite, brown glass front and back \$149.50

The H450 with Toxonite is to the hunter what the X400 is to the target and field archer. It has speed that every hunter wants combined with smoothness and stability you just can't imagine in a hunting bow. For the archer who shoots the field range with his hunting equipment we guarantee the H450 will improve his score. Actual weight 3½ pounds.



**THE WILSON  
TAB**

U.S. Pat  
No. 2,974,319

\$1.50

**Available in FIVE  
SIZES**

**Extra Small, Medium, Large and Extra Large.  
Right and Left Hand.**

The ordinary tab is hard to break in so it will feel comfortable and give a good release. The Wilson Tab, because of its patented construction, requires no long break in period, it permits a perfect release right from the start.

**NEW FOR 1968**

All models, both target and hunting bows, are now made with new "Action Wood" laminations. Each lamination is made of 16 strips of wood thermo-bonded together, then sawed and sanded to the proper thickness and taper with the 16 strips in a vertical position between the front and back glass.

These new laminations make a more stable limb and add new smooth power. You can actually feel the difference. The cost of these new laminations is a great deal more than standard laminations but in keeping with our policy to use what we believe to be the finest materials available we feel they are worth it. We are sure you will agree when you try a new Black Widow.

# THE NEW 4-in-1 BLACK WIDOW STABILIZER

\$21.50

Bushing for "Do-it-yourself" installation included

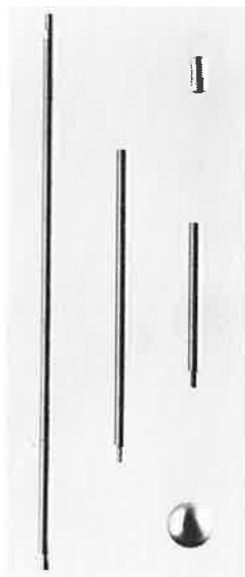


This illustration shows all sections joined together for the full 26" length. Weight of full length rod with ball is 10 ounces. Ball alone, 5 ounces.

Bushings are installed in all Black Widow Target model bows as shown at left.

Picture at right shows the 14", 8" and 4" sections of rod. Ball can be mounted on any section so rod can be made at 4 different lengths—14", 18", 24" and 26".

Because the rod will have the same diameter at any length you select and with the ball on the end it will have the proper stabilizing action.

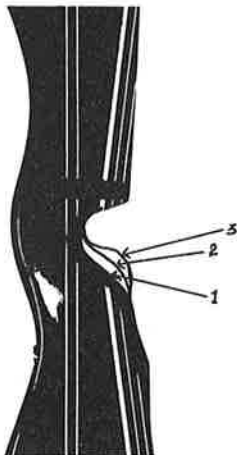


## BOW DRAW WEIGHTS

All target models are available in weights up to 50 pounds at 28" draw. Hunting bows up to 65 pounds. Weights are marked at 28" draw unless requested otherwise. All models available right or left handed.

## HANDLE GRIPS

Handle grips are made in No. 1, No. 2, or No. 3 shapes as shown in the illustration and of a standard size for men and a smaller standard size for women. These sizes can be made smaller or larger at your request, or if you wish you may send dimension measurements of the size you want.



### HANDLE GRIP SHAPES

- No. 1. Standard
- No. 2. Semi-high wrist
- No. 3. Straight or high wrist.

# THE NEW 4-in-1 BLACK WIDOW STABILIZER

\$21.50

Bushing for "Do-it-yourself" installation included



This illustration shows all sections joined together for the full 26" length. Weight of full length rod with ball is 10 ounces. Ball alone, 5 ounces.

Bushings are installed in all Black Widow Target model bows as shown at left.

Picture at right shows the 14", 8" and 4" sections of rod. Ball can be mounted on any section so rod can be made at 4 different lengths—14", 18", 24" and 26".

Because the rod will have the same diameter at any length you select and with the ball on the end it will have the proper stabilizing action.

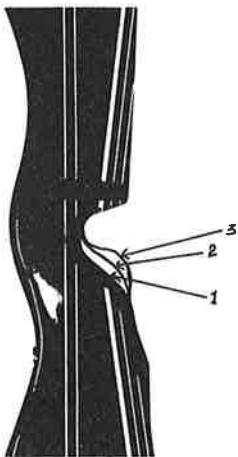


## BOW DRAW WEIGHTS

All target models are available in weights up to 50 pounds at 28" draw. Hunting bows up to 65 pounds. Weights are marked at 28" draw unless requested otherwise. All models available right or left handed.

## HANDLE GRIPS

Handle grips are made in No. 1, No. 2, or No. 3 shapes as shown in the illustration and of a standard size for men and a smaller standard size for women. These sizes can be made smaller or larger at your request, or if you wish you may send dimension measurements of the size you want.



### HANDLE GRIP SHAPES

- No. 1. Standard
- No. 2. Semi-high wrist
- No. 3. Straight or high wrist.





The Wilson Brothers, Norman, Jack and Bob, makers of the now world famous Black Widow Bows have been in archery more than thirty years. They were National Champions as far back as 1946 and for many years were among the top group of archers at State, Regional and National tournaments in both target and field archery. The knowledge and experience accumulated in years of shooting in all phases of archery; hunting, target and field, and the shooting and testing of many different bows resulted in the development of the Black Widow. A bow which from the very first year found its way into the hands of champions.

For the past several years we have, from time to time, made slight changes in the various models when we felt it would improve the shooting qualities of the bow, but we do not make changes just to try to sell you a new model. For example, one of our top target models, the 101, has been made the same for the past four years. We believe our latest models, the X400 and H450, made with Toxonite, to be the best bows in the world. But there is, of course, a need for more than just one model and price bow. In the other fine models of Black Widow Bows which are all hand-crafted with the same exacting and individual care as the X400 and H450 there is a bow to fit every need from the economically priced X85 to the X200. They are available in choice of handle woods, walnut, maple or rosewood and a choice of handle grips.

Black Widow Bows are truly a handcrafted, **custom made** bow and for this reason they are available in a greater variety of designs, lengths, handle grip shapes and handle section material than any other make of top line bows.

### BLACK WIDOW BOW GUARANTEE

**Black Widow Bows are guaranteed for three years on a pro-rated basis, guarantee and registration card accompanies each bow.**

Should you come through Springfield we cordially invite you to stop and see us. Just call when you get in town and we will give you directions.



**WILSON BROTHERS MFG. CO.**

Route 8, Box 33-H

Springfield, Missouri 65804, U.S.A.

Telephone: Area Code 417-883-3235

