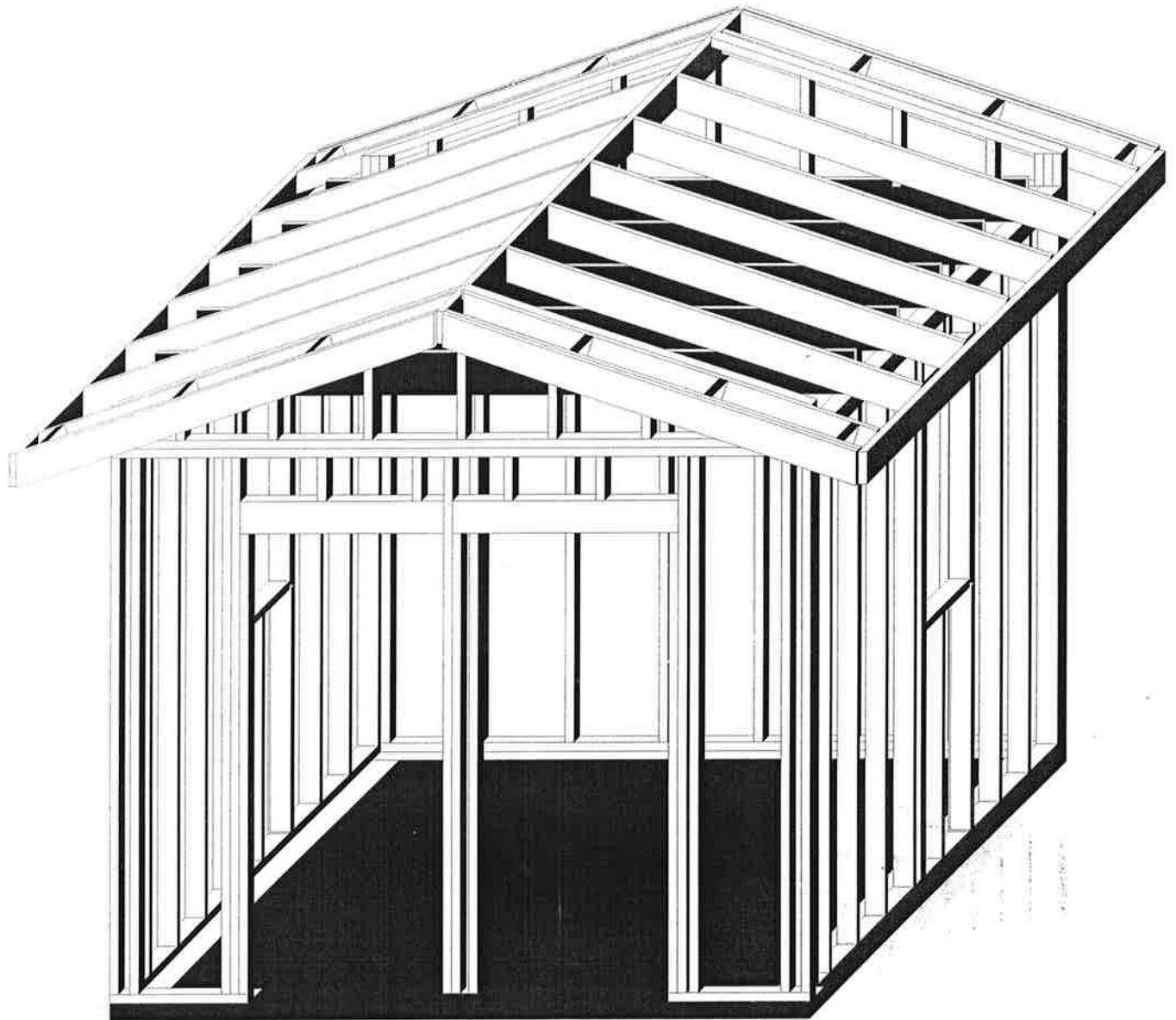
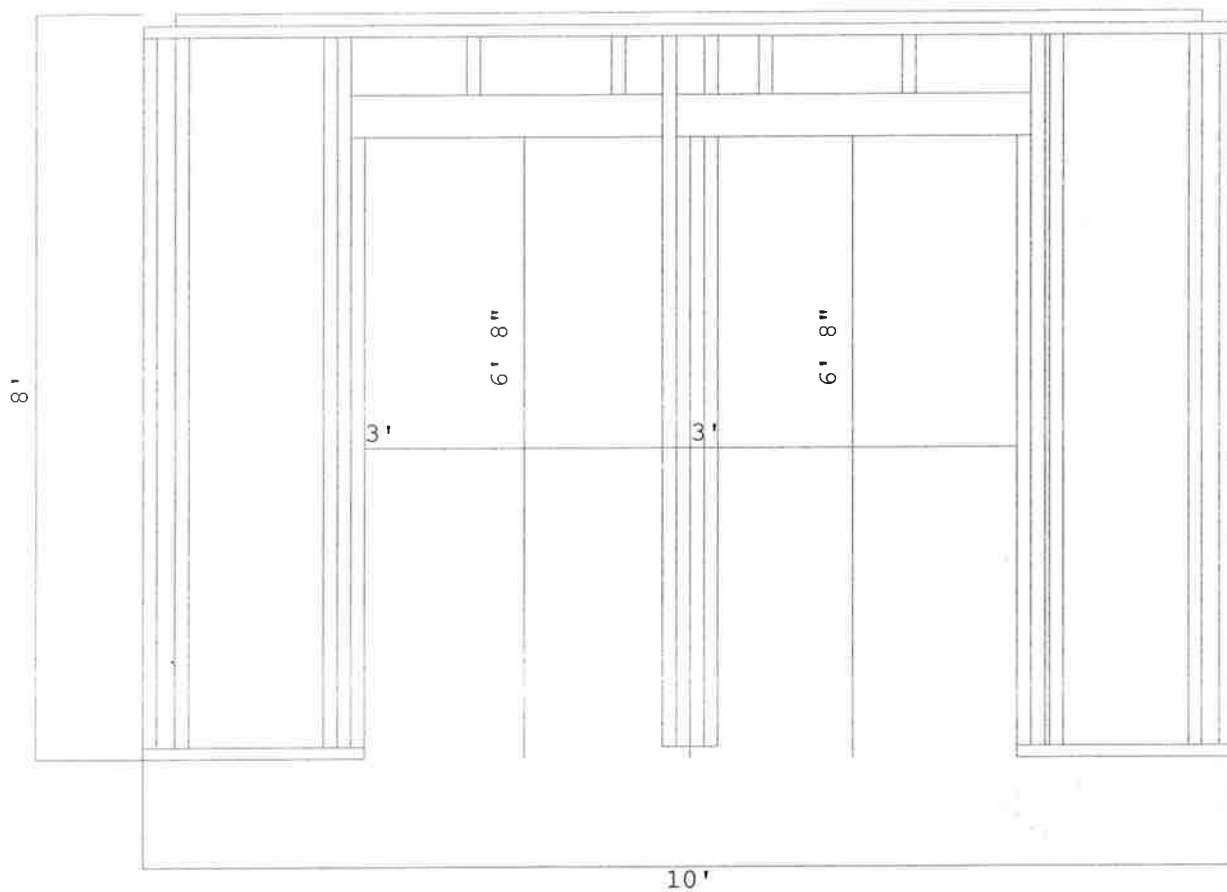


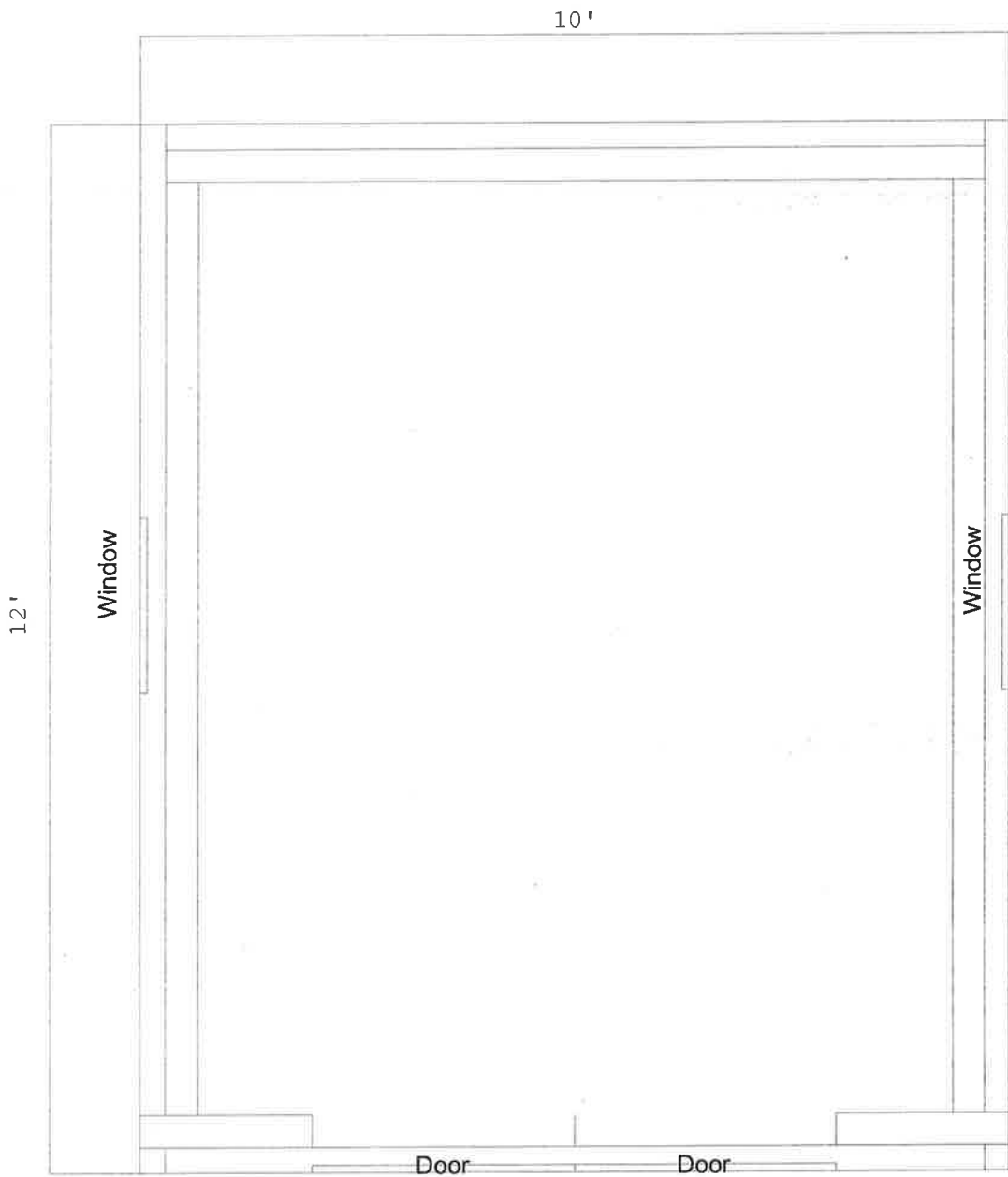
The Home Depot # 0161  
2120 HAMILTON CREEK PKWY, DACULA, GA 30019  
(770) 945-7176  
Thu Oct 20 11:13:23 2005  
HOME OWNERS BELFAIRE  
10X12 10.19  
67852  
The materials in this garage will cost \$1948.95  
Drawing: 3-Dimensional View



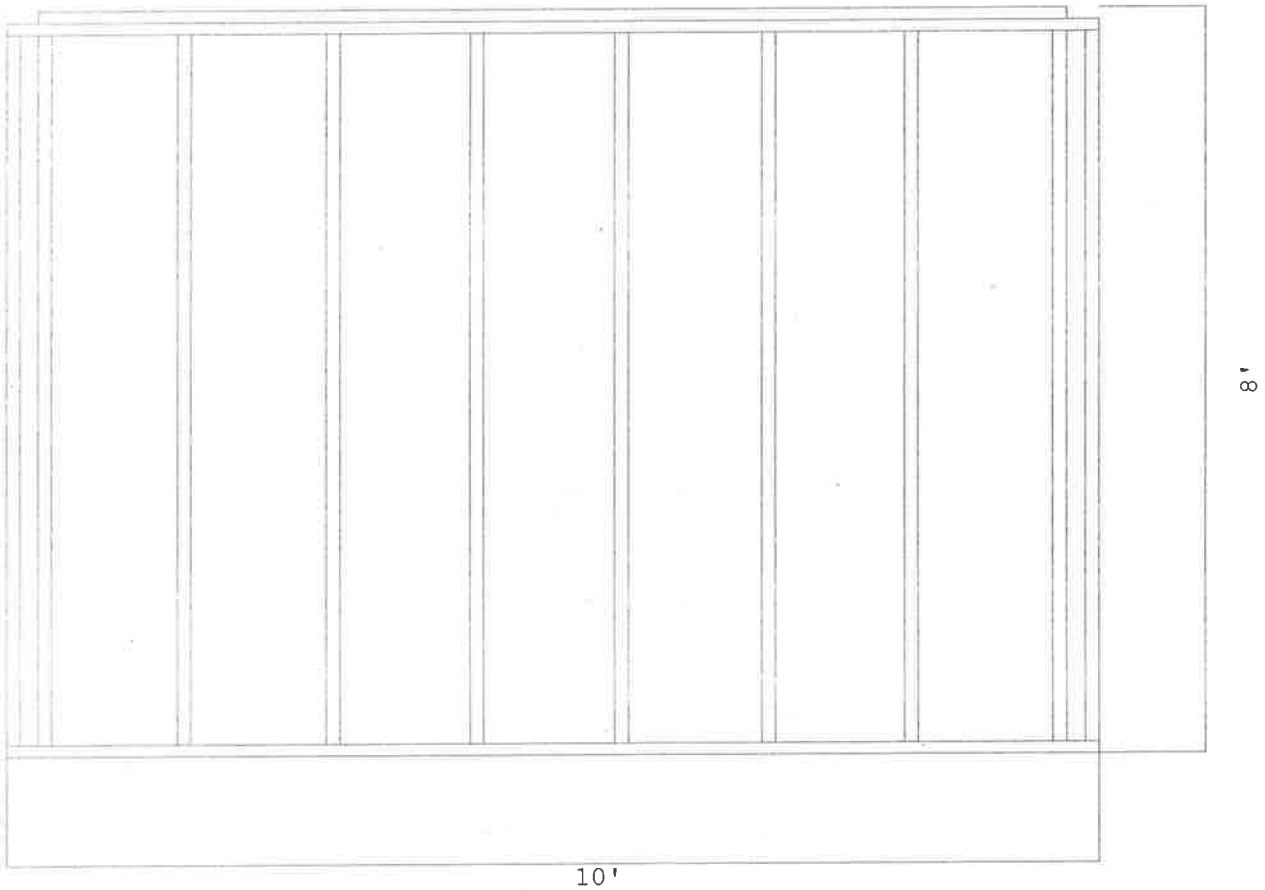
The Home Depot # 0161  
2120 HAMILTON CREEK PKWY, DACULA, GA 30019  
(770) 945-7176  
Thu Oct 20 11:13:23 2005  
HOME OWNERS BELFAIRE  
10X12 10.19  
67852  
Front Side



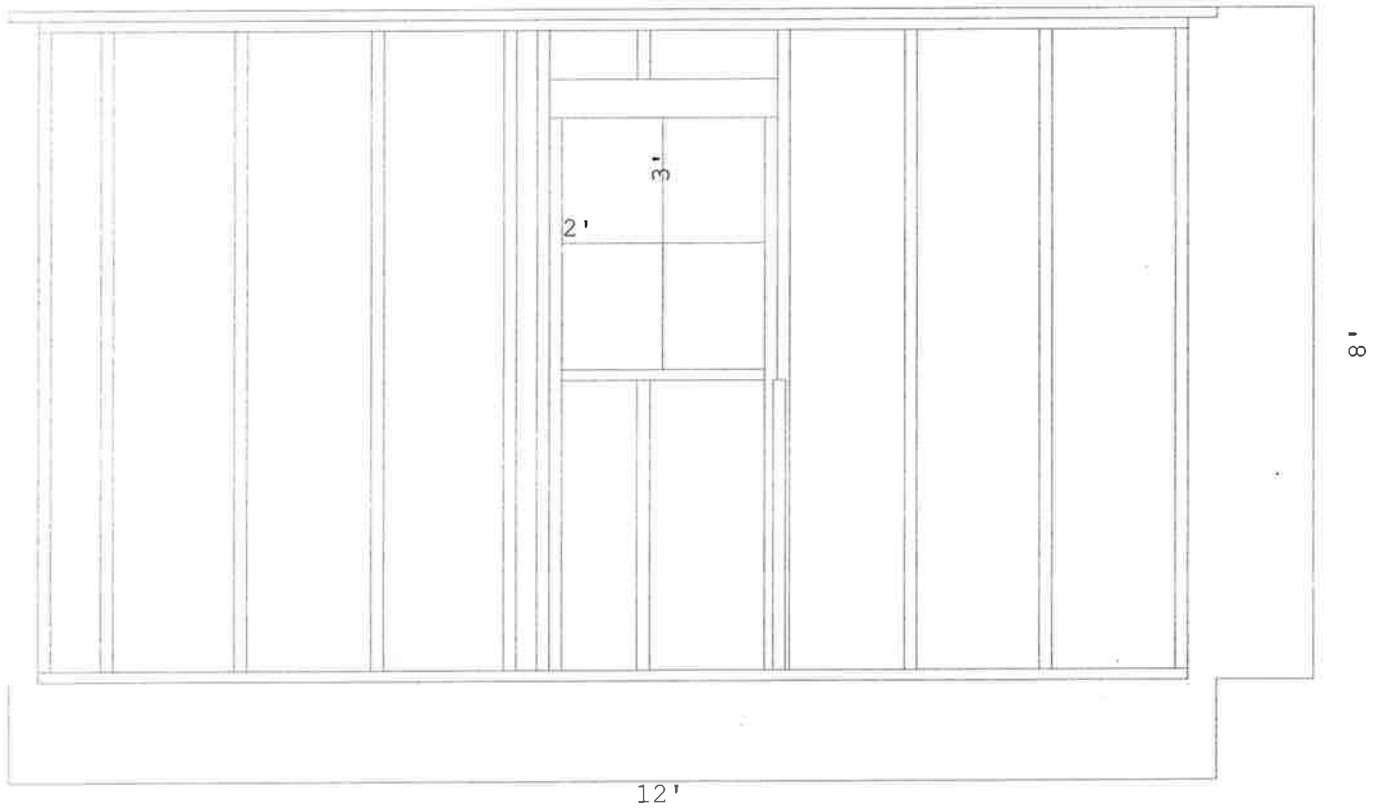
The Home Depot # 0161  
2120 HAMILTON CREEK PKWY, DACULA, GA 30019  
(770) 945-7176  
Thu Oct 20 11:13:23 2005  
HOME OWNERS BELFAIRE  
10X12 10.19  
67852  
Drawing: Plan View



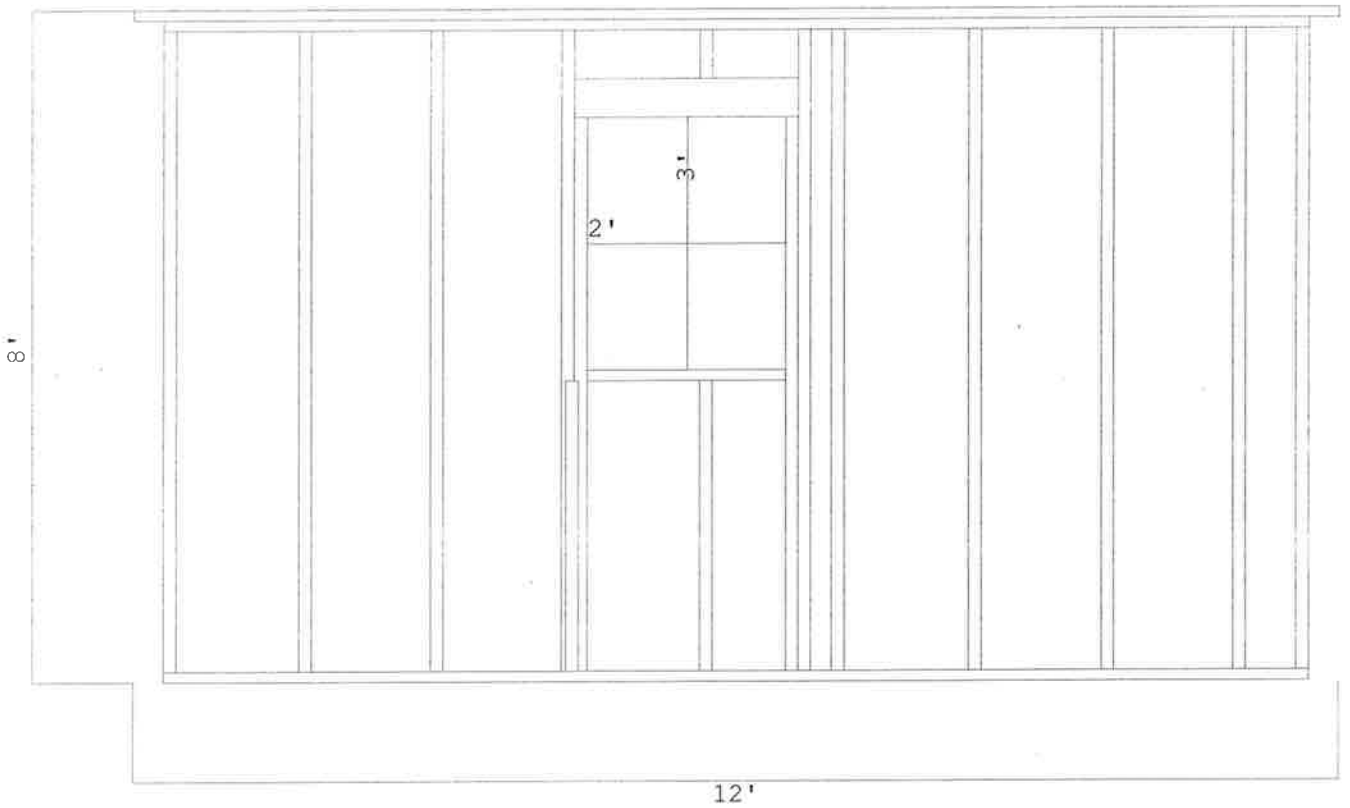
The Home Depot # 0161  
2120 HAMILTON CREEK PKWY, DACULA, GA 30019  
(770) 945-7176  
Thu Oct 20 11:13:23 2005  
HOME OWNERS BELFAIRE  
10X12 10.19  
67852  
Back Side



The Home Depot # 0161  
2120 HAMILTON CREEK PKWY, DACULA, GA 30019  
(770) 945-7176  
Thu Oct 20 11:13:23 2005  
HOME OWNERS BELFAIRE  
10X12 10.19  
67852  
Right Side



The Home Depot # 0161  
2120 HAMILTON CREEK PKWY, DACULA, GA 30019  
(770) 945-7176  
Thu Oct 20 11:13:23 2005  
HOME OWNERS BELFAIRE  
10X12 10.19  
67852  
Left Side



The Home Depot # 0161  
 2120 HAMILTON CREEK PKWY, DACULA, GA 30019  
 (770) 945-7176  
 10/20/2005  
 HOME OWNERS BELFAIRE  
 10X12 10.19  
 67852

Qty	UOM	SKU	Use	Description
1	EA	124380	Base/Bottom Plate	2X4-10 NO 2 PRIME PT
2	EA	168161	Base/Bottom Plate	2X4-12FT. NO.2 PRIME PT SYP
1	EA	167929	Base/Bottom Plate	2X4-8FT. NO.2 PRIME PT SYP
5	EA	201088	Ceiling Joist	2X8-16FT. #2/BTR KD-HT SPF
3	EA	569062	Cripple Stud	2X4-92 5/8 KD WW STUD
4	EA	569062	Door Framing	2X4-92 5/8 KD WW STUD
2	EA	161713	Door Header	2X6-8FT. #2/BTR KD-HT SPF
8	EA	161659	Fly/Barge Rafter	2X4-10FT. STD/BTR KD-HT SPF
6	EA	161659	Gable End Framing	2X4-10FT. STD/BTR KD-HT SPF
2	EA	569062	Ladder/Gbl Overhang	2X4-92 5/8 KD WW STUD
10	EA	161713	Rafter	2X6-8FT. #2/BTR KD-HT SPF
1	EA	161772	Ridge Board	2X6-14FT. #2/BTR KD-HT SPF
40	EA	569062	Stud	2X4-92 5/8 KD WW STUD
4	EA	161713	Sub Fascia	2X6-8FT. #2/BTR KD-HT SPF
2	EA	161772	Sub Fascia	2X6-14FT. #2/BTR KD-HT SPF
4	EA	161659	Top Plate	2X4-10FT. STD/BTR KD-HT SPF
4	EA	161667	Top Plate	2X4-12FT. STD/BTR KD-HT SPF
6	EA	569062	Window Framing	2X4-92 5/8 KD WW STUD
2	EA	161713	Window Header	2X6-8FT. #2/BTR KD-HT SPF
4	EA	984590	Caulk	ALEX PLUS WHITE 10.1 OZ.
1	EA	192708	Door Mntng Nails	16D 3-1/2" HOT GALV COMMON 5 LB
3	EA	192708	Framing Nail-5lbs	16D 3-1/2" HOT GALV COMMON 5 LB
10	EA	461938	HurrTie-RafterTruss	HURRICANE TIE-RAFTER/TRUSS-EA
5	EA	464074	Ridge Connector	RIDGE RAFTER CONNECTOR-EA
1	RL	150247	Sill Sealer 3-1/2"	3 1/2X50FT FOAM SILL SEALER
1	BX	418463	Window Mntng Nails	4D 1-1/2" ELECTRO GALV.ROOFING 5 LB
1		826354	Doors	36X80 RH PREMIUM 9-LITE PH IS BM
1		460395	Entry Set #1	TYLO KEYED ENTRY - PB JLQ 108
1		826349	Doors	36X80 LH PREMIUM 9-LITE PH IS BM
1		460395	Entry Set #1	TYLO KEYED ENTRY - PB JLQ 108
1		263415	Windows	2900/WHT/ 2/0 X 3/0 -4/4 LOWE
1		263415	Windows	2900/WHT/ 2/0 X 3/0 -4/4 LOWE
6	BD	166567	Roofing	30YR WEATHERED WOOD TIMBERLINE
1	RL	258830	15# Felt	15# FELT-432 SQ.FT.
1	BG	668946	PlywoodH-Clips7/16"	7/16IN PLYWOOD CLIP-50PK
1	BX	418463	Roofing Nails 5lbs	4D 1-1/2" ELECTRO GALV.ROOFING 5 LB
6	EA	386081	RoofSheath OSB 7/16	7/16 4X8 OSB
1	BX	944319	RoofSheathNail5#	8D 2-3/8" COATED SINKER 5 LB
56	EA	462260	Siding	8.25 X 12 CEDARMILL PRIMED HARDIE
6	EA	914703	Casing-1x4	1X4 -10 NO.2 WHITEWOOD
5	EA	161901	Casing-1x4 Cedar	3/4X4X12 KD STK S1S2E CEDAR BOARDS
5	EA	914797	Casing-1x6	1X6 -12 NO.2 WHITEWOOD
5	EA	727626	Casing-1x6 Cedar	3/4X6X12 KD STK S1S2E CEDAR BOARDS
1	EA	641398	Moisture Barrier	9FTX150FT TYVEK HOUSEWRAP
1	EA	192708	O/S Corner Nails	16D 3-1/2" HOT GALV COMMON 5 LB
6	EA	914797	O/S Corner-1x6/WW	1X6 -12 NO.2 WHITEWOOD
2	EA	193569	Siding Nails 5lbs	8D 2-1/2" HOT GALV COMMON 5 LB
2	EA	193569	WallSheathNail5#	8D 2-1/2" HOT GALV COMMON 5 LB

The total cost of in stock materials is \$1948.95 plus tax.  
 This estimate was created on 10/20/2005 and is valid for 3 business days.

Parameters from UBC.cod parameter file.  
Parameters used: 10' by 12' by 8' high,  
Eave overhang of 12 inches, Gable overhang of 12 inches,  
with a foundation size of 8" wide by 0" high.

**WARNING:**

THIS IS NOT A FINAL DESIGN PLAN. VARIATIONS IN BUILDING CODES, SPECIFIC ARCHITECTURAL CONSIDERATIONS, OR SITE CONDITIONS MAY REQUIRE CHANGES TO THIS DESIGN. YOU ARE RESPONSIBLE FOR THE FINAL STRUCTURE, CODE VERIFICATION, MATERIAL USAGE, AND STRUCTURAL SAFETY OF THIS DESIGN. BE SURE TO CHECK AND VERIFY THE DESIGN WITH YOUR LOCAL ARCHITECT AND BUILDING INSPECTOR.

THE COMPANY ASSUMES ABSOLUTELY NO RESPONSIBILITY FOR THE CORRECT USE OF THIS PROGRAM. ALL OUTPUT SHOULD BE EXAMINED BY A QUALIFIED PROFESSIONAL TO DETERMINE IF THEY ARE REASONABLE AND ACCURATE.