



WIRELESS IMAGING NETWORK

VIN Scanning Manual



Capial Automotive Reconditioning Services

Copyright © 2016 All Rights Reserved

WIN Is for VINners!

This manual can't possibly answer every question. VIN scanning won't always be trouble free. Damaged VIN strips, bad weather, bad lighting, and a bad attitude can all affect your work! But WIN is an awesome tool and smartphones are crazy cool— so...persist! When you run up against a challenge, play with that phone— figure out a way around the problem. When in doubt... REBOOT! :o)

WIN gives you three distinct ways to capture VIN info. **ACTIVE SCAN** utilizes a high energy beam that actually reads the VIN code. **PHOTO SCAN** depends on a high quality photo of the actual VIN, processed instantly through our decoder. Both work well but it's good to have a choice. When one fails to cooperate, the other will often save the day. **MANUAL ENTRY DECODE** is pretty much a home run every time.

***PHOTO** and **MANUAL** are self-explanatory— you'll figure them out right away. In this manual, I'll deal with **ACTIVE SCAN**... the favorite of most folks, though it may take a little longer to master.*



This Photo Ain't Right!

It's over there on the left side!

This is a VERTICAL photo of the VIN strip on the door of a vehicle. I must admit, vertical photos look pretty darn snappy when photographing your kids, your significant other(s), or Rover (your dog). BUT.... they don't do well in the web world.

It Hasta Be Horizontal!

We use big words back here at WIN headquarters!

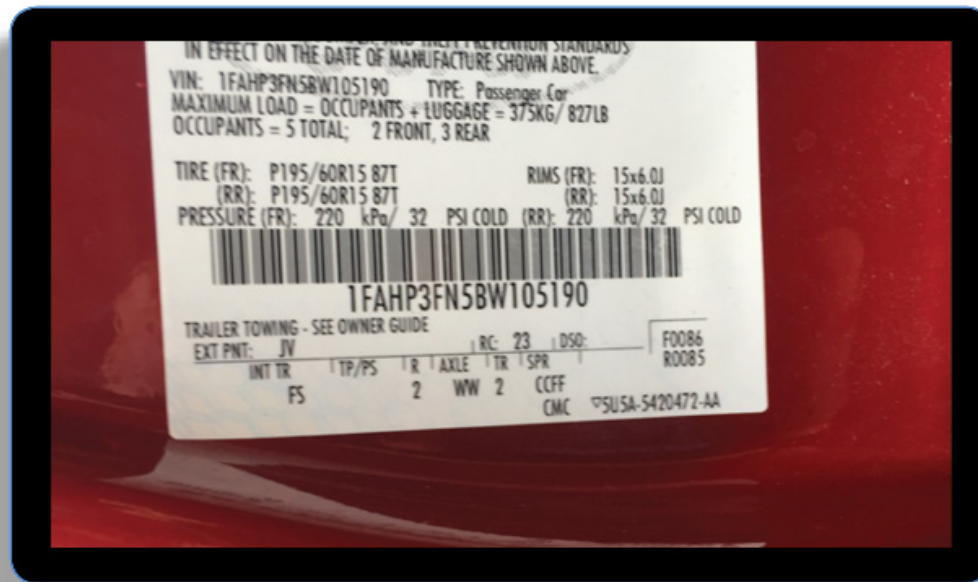
Please snap ALL of your WIN photos horizontally. It's the way the system is set up AND the way your photos will always appear online. Your thumbs may get in the way, at first. But, with a little practice, they'll come around— or fall off!



I'm Way Out on the Left!

My aimer is to blamer!

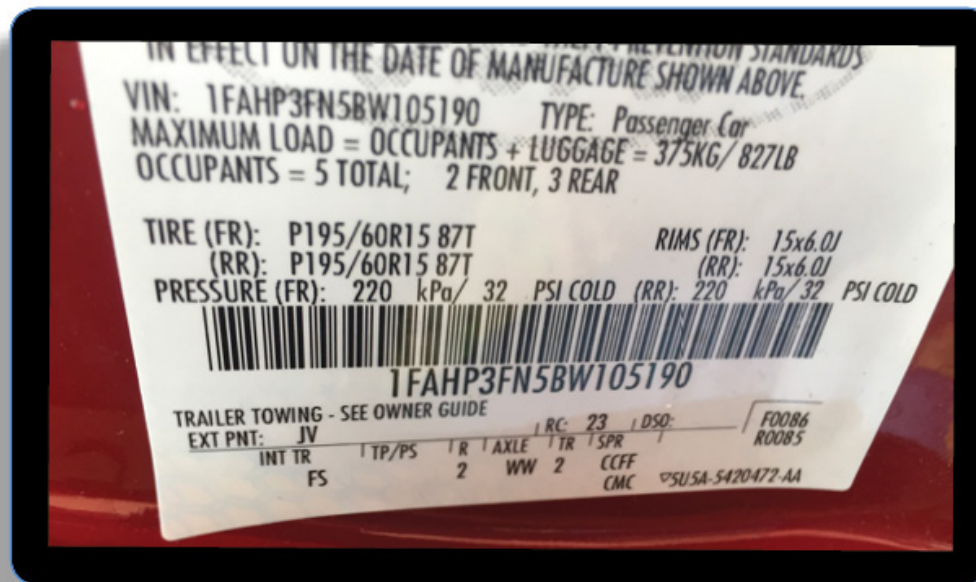
You want the camera to be lined up square with the VIN strip. In this photo, I'm too far left and it causes the VIN strip to warp. You may get lucky and the scan will "take" but, more likely, you'll have to center up a bit to give the scanner a fighting chance. Patience and persistence will almost always pay off!



I'm Higher Than a Kite!

Tall dudes hafta stooooop!

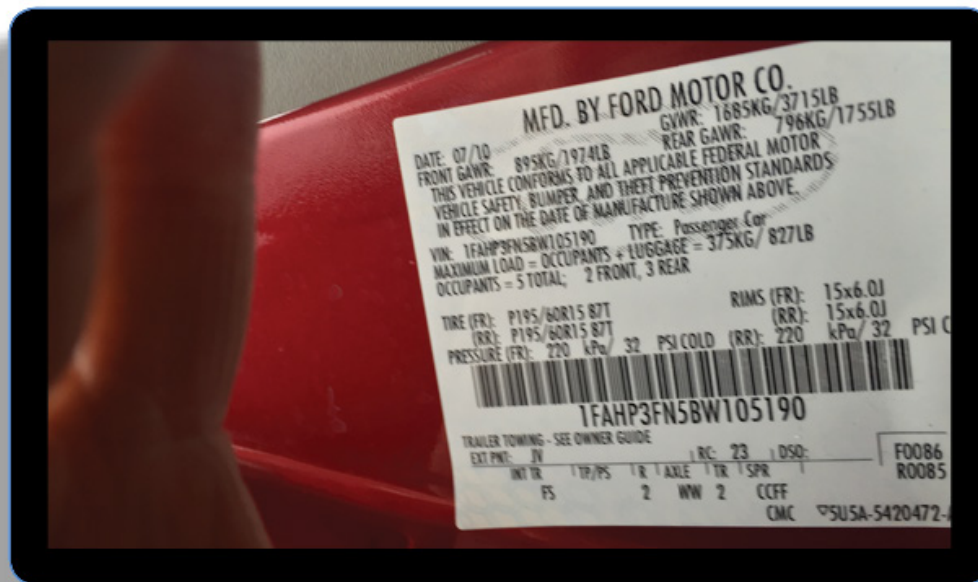
In this photo, the camera angle is way too high and looking down on the VIN. Again, it's warped, and you'll likely have a very tough time getting the scanner to "lock on" to the VIN from this angle. Quickly adjust and try again!



I'm Such a Big Thumbby!

Next time I'll use my eyes.

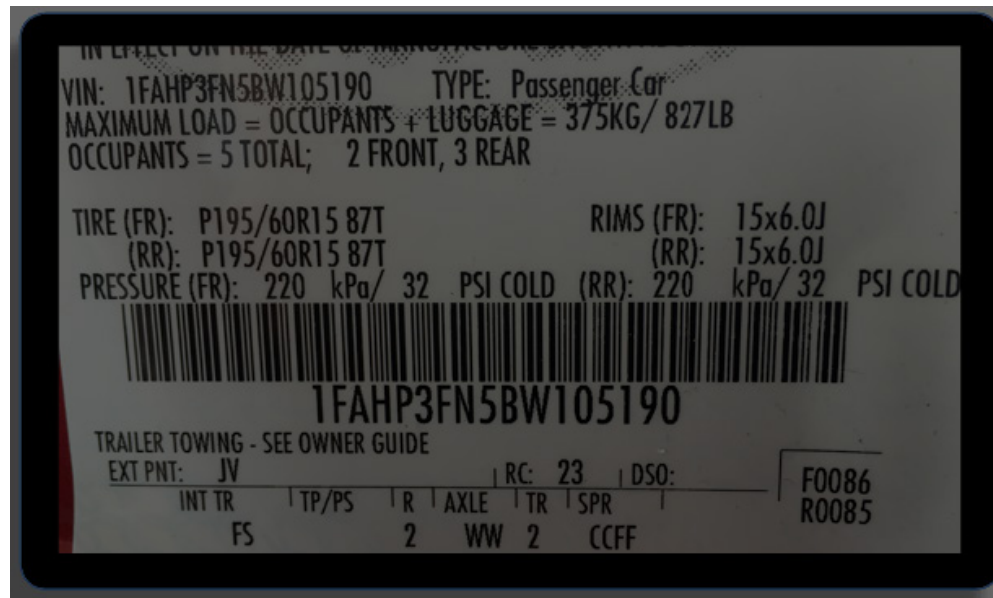
Just like my last vacation photos— a thumb in every snap... arghhhhh! I'm aimed waaaay too far left. Everything is screwed up. My bad. Try again!



“Honey... Did We Pay the Power Bill?”

WIN cameras can do magic... but sometimes we ask too much!

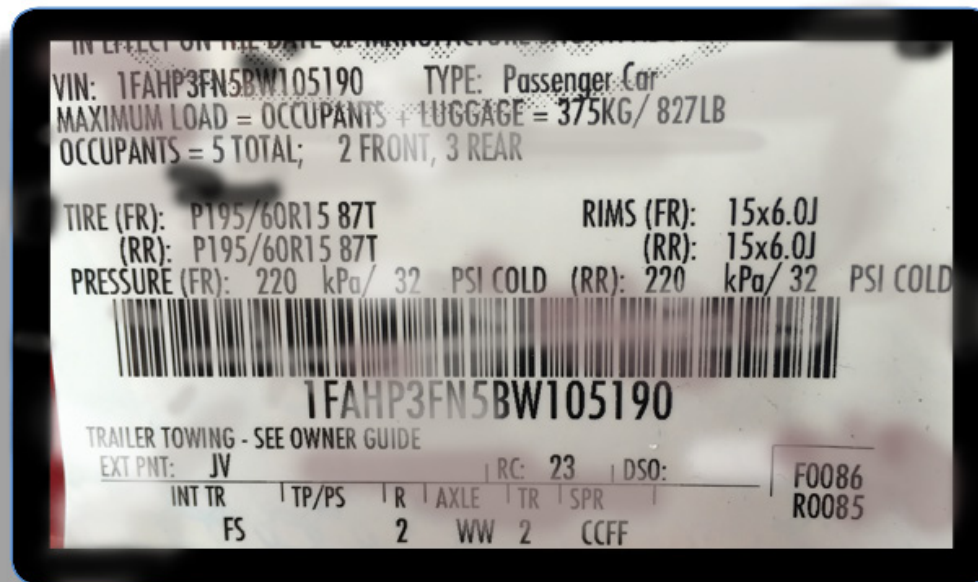
Waaay too dark. Find a way to throw some light on the VIN strip. It won't take much. Turn on a couple of lights in the shop, change the angle of the vehicle, or move it outside—whatever it takes. If all else fails, you can always enter the VIN manually—takes about 30 seconds.



Time to Wash My Car?

Naaa... I washed it last Summer!

Sometimes the VIN strip is dirty or damaged... sometimes missing. Carry a cloth with you— a wipe never hurts. If it's damaged, you can't do much about that. Again— it's no big deal to enter the VIN manually... takes 30 seconds!



That's What I'm Talkin' 'Bout!

Impressive... It only took us ten tries!

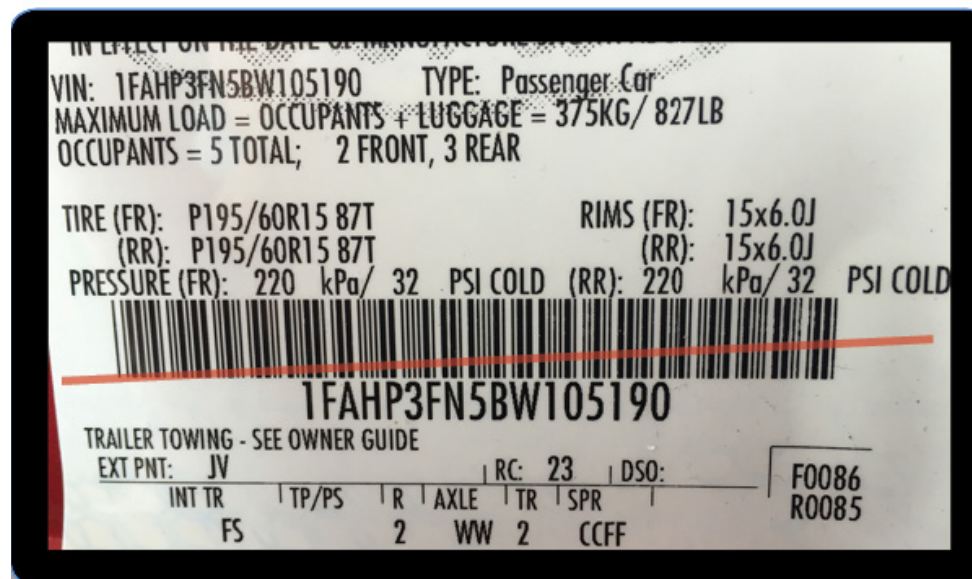
This time the angle is about right. With a little practice, you'll get pretty good at this and be able to scan like a pro. But—sometimes you'll have to work at it. I don't waste much time. When I'm struggling in marginal conditions, I just enter the VIN manually and move on!



Lift a Little on the Left!

I musta been slouching!

Now it's time to scan. It's automatic. You'll see the red beam appear on the VIN. The camera will automatically focus and adjust the light. Your job is to find the "sweet spot." Gently adjust the angle of attack and the distance from the VIN strip. This is a bad angle—try to level up that camera a bit!



I Missed the Target!

Darn near missed the entire barn!

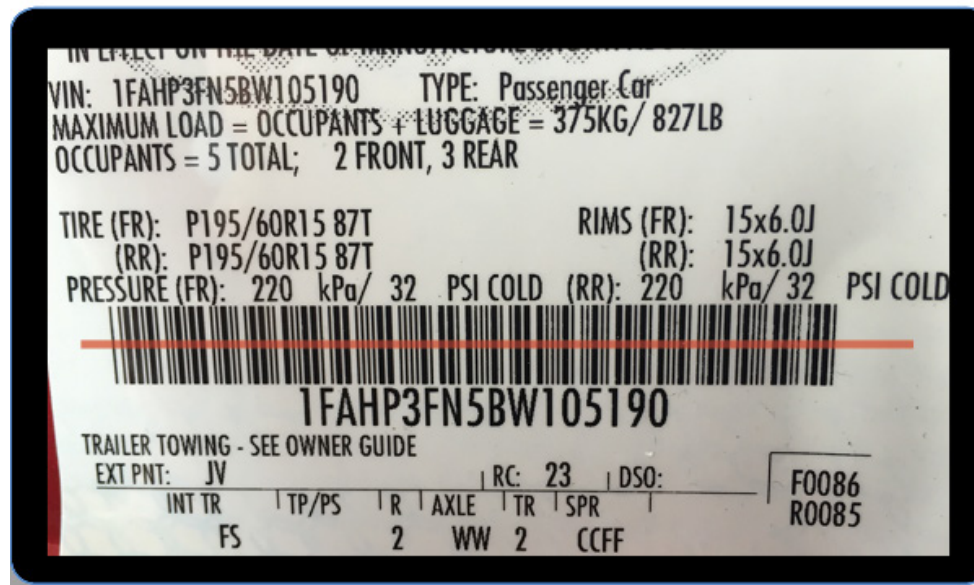
This angle of attack isn't going to win you a teddy bear either! Try again. The scanner will continue to make light and focus adjustments while waiting for you to do your part. You're a team! Once you get the hang of it (and it won't take long), WIN really will save you time!



My Mama Would Be Proud!

This is what we're hoping for on the first try!

Bingo! That's it! Nice and level. You've probably already figured out that scanning works best when you get right down close to the VIN—filling the entire camera screen with VIN. Slow, gentle movements of your hands will allow the camera to adjust the light and focus on the VIN! PATIENCE almost always pays off!



Let's Think GREEN!

I'm talkin' about cash!

When all the stars align and you hold your mouth just right (it helps to wiggle your ears)... the red line turns green and the data has been captured. You have successfully scanned the VIN. Be patient (just a few seconds) and the VIN explosion takes place posting the make, model, year, and VIN in all the right places!



A Parting Pep Talk!

About WINning!

WIN is REALLY a cool digital tool. But, it didn't cost \$300,000 and it's not perfect. And even the \$300,000 gizmos give their operators fits! Just ask Unle Sam! There may be times when really strange stuff happens. But, you'll soon become very familiar with WIN, you'll figure out shortcuts, and you'll be able to improvise your way around difficulties.

WIN is just a tool and you are slowly becoming the master craftsman. And you're not that far away from the day when WIN will work for YOU— not the other way around!

Tim Ross
WIN National Director
tross@caputorecon.com
