

## Eligibility Requirements:

- Students are referred by their home school district
- Students must be willing to actively participate in transition services



## Funding

TEC's Transition from School to Work Program is funded by local school districts and the United Way

## For More Information, Please Contact

*Kendra Casella*  
Director of  
Educational Programs

Phone: 724-225-3535

Email: [kcasella@tecwg.org](mailto:kcasella@tecwg.org)



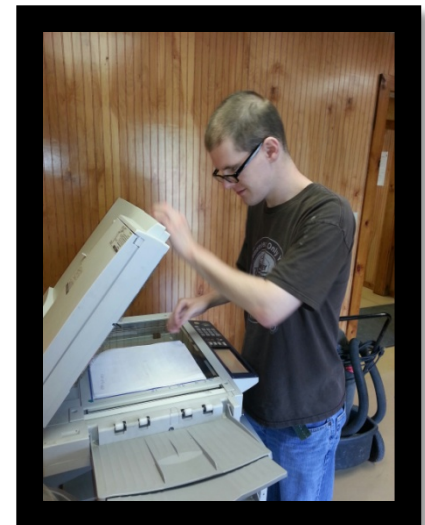
330 Central Ave.  
Washington, PA 15301  
724-225-3535



Participating Agency

## TEC TRANSITION FROM SCHOOL TO WORK: COMMUNITY BASED VOCATIONAL INSTRUCTION PROGRAM (CBVI)

Reach for the Stars:  
Preparing students with disabilities for the world tomorrow



(TEC) Transitional Employment Consultants

## Community Based Work Experience

A full day or half day program offered to high school students with disabilities. Students in the Full Day Program volunteer at a community volunteer site all day from 10:00AM-2:00PM or 9:00-2:00PM. Students in the Half Day program are at their home school district for half of the day and then volunteer in the community with a job coach for the rest of the day. There are two Half Day options, which are 9:00AM-11:00AM or 12:00PM-2:00PM. Our team of job coaches support students in their efforts to learn and develop the necessary skills for employment after high school.

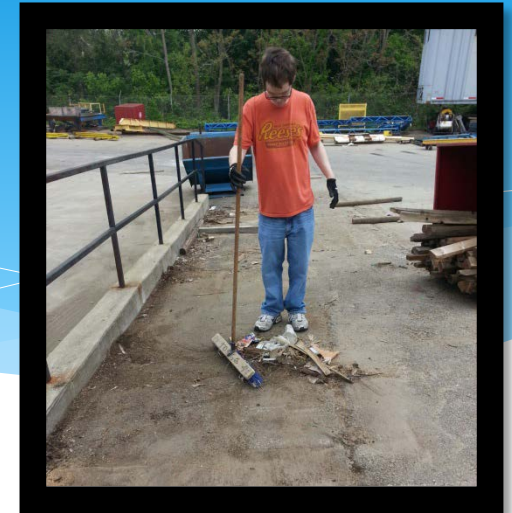


## Program Goals

- Enhance self-esteem
- Develop proper work habits and attitudes
- Develop awareness of career and post-secondary opportunities
- Reduce the drop-out rate
- Reduce unemployment
- Develop awareness of community resources

## Program Benefits

- Positive interactions with co-workers and supervisors
- Individual and team building opportunities
- Real community work place experience
- Helping others through volunteering
- Coaching through problem solving opportunities



## Mission Statement

TEC's Mission is to assist individuals with disabilities to become independent, productive members of the community by providing job training and placement into competitive employment.