

Implementing Act 171 Vermont's Forest Fragmentation Law

Benefits of Lowell's Forest Blocks and Connected Forests

The Town of Lowell recognizes the importance of unfragmented forest blocks and the connecting landscapes in maintaining the ecological processes that support the biological and economic health of the people of Lowell and its wildlife. Lowell's unfragmented forests provide many benefits to the people of Lowell. Our forests provide timber and jobs, help moderate tick-borne illness, prevent soil erosion and contribute to the quality of our waters and air. These forests provide places for recreation including: hunting, fishing, and trapping, walking and hiking, skiing, snowshoeing, snowmobiling, ATV riding and enjoying our mountains, rivers, and our spectacular display of fall colors. Lowell's unfragmented forests also contribute to our Biological Diversity and provide secluded habitats for many of our more wary species of wildlife such as bear, bobcat, moose, and fisher.

The Town of Lowell will seek to maintain our unfragmented forests and the connections between them.

OR

The Town of Lowell encourages all landowners to assist in maintaining our unfragmented forests and the connections between them.

Definitions:

Forest Blocks

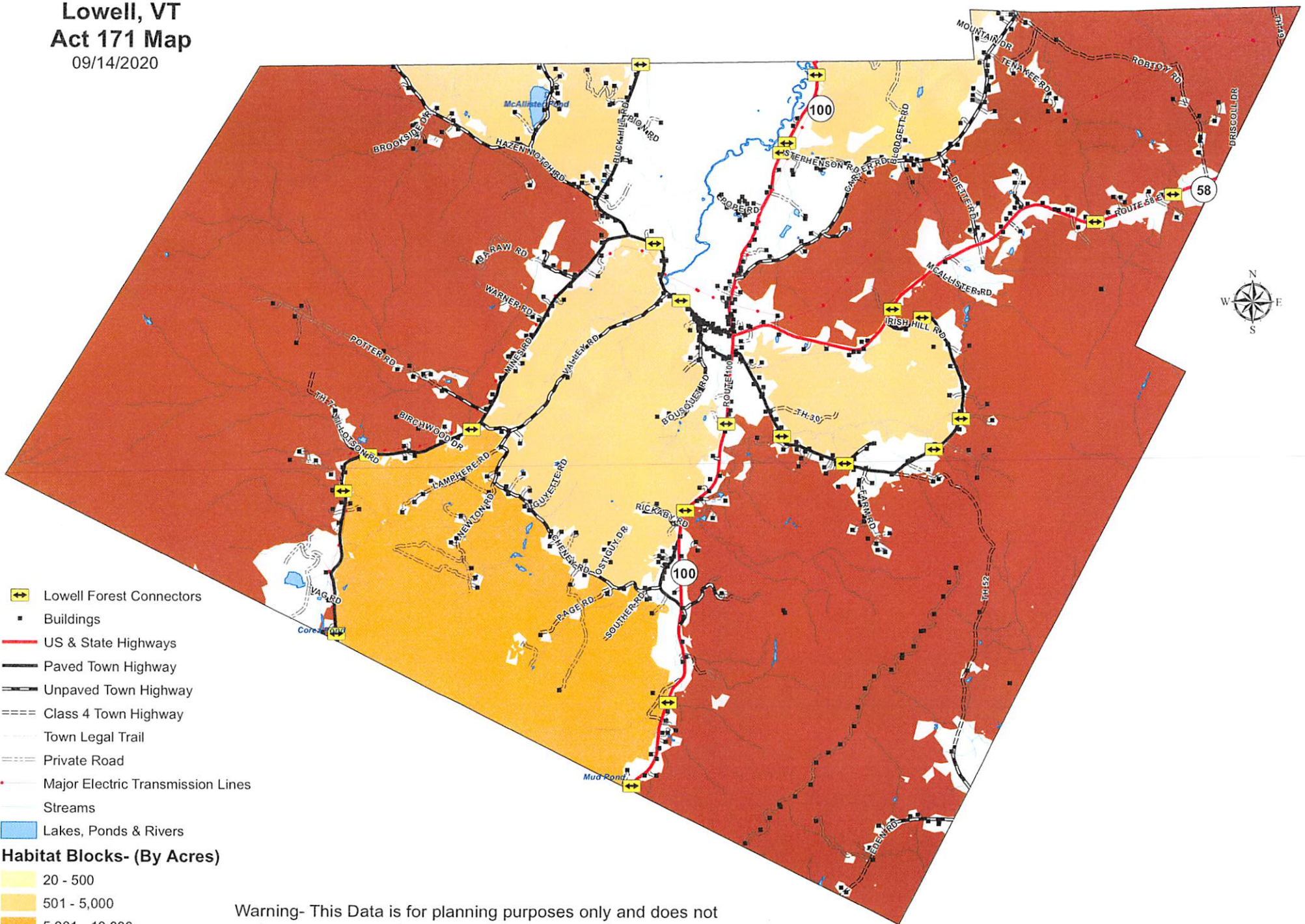
Forest blocks are those unfragmented forest blocks (sometimes called "interior forest" that are over 500 acres in size. These forest blocks are without paved roads, permanent houses, agricultural, and other human development. Lowell's forest blocks may also contain small ponds, stream and rivers, wetlands, and other features such as ledges, cliffs and orchards that also contribute to a forest blocks value to a wide variety of wildlife. These forest blocks consist of the Town's highest priority interior forest and connectivity blocks (as mapped by the State of Vermont) as well as those containing Lowell's serpentine landscape, a landscape that contains unusual natural communities and rare plants. Also included are smaller unfragmented forested areas that potentially serve as a landscape "stepping stones" that function as a linkage for wildlife between these larger forest blocks.

Connecting Blocks

Larger connecting blocks that function in maintaining an unfragmented forest in Lowell have been identified and are shown on the accompanying map. Forested blocks that are separated by paved roads but retain relatively wild conditions - largely free of concentrated human development, may also serve to facilitate the movement of wildlife across the landscape and between forest blocks. Forested stream crossings and areas with forest habitat and little human disturbances have also been mapped as potential wildlife connectors between forest blocks.

Lowell, VT Act 171 Map

09/14/2020

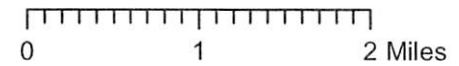


- Lowell Forest Connectors
- Buildings
- US & State Highways
- Paved Town Highway
- Unpaved Town Highway
- Class 4 Town Highway
- Town Legal Trail
- Private Road
- Major Electric Transmission Lines
- Streams
- Lakes, Ponds & Rivers

Habitat Blocks- (By Acres)

- 20 - 500
- 501 - 5,000
- 5,001 - 10,000
- 10,001 - 50,000
- 50,001 - 154,565

Warning- This Data is for planning purposes only and does not replace a survey and/or engineering study. Because this map is developed from various scale sources, there may be some discrepancies between data layers.



Attachment B