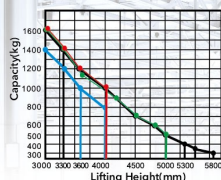


HELI
LIFTING THE FUTURE



TOP1 FORKLIFT MANUFACTURER AND SALES
IN CHINA FOR CONSECUTIVE 24 YEARS

Load Curve



CDD14/16
1.6 Ton Straddle Electric Stacker

Lifting Height: 1400-5800mm

Advantages

Configuration and Performance

- Electronic power steering system, light and low noise.
- Two-way magnetic valve, three drop speed mode.
- Drive unit floating bodies with patent design.
- AC Driving system, No carbon brush, maintenance free.
- USA CURTIS driving controller.
- Electromagnetic, regenerative braking system.
- Automatic lifting limit, proximity switch, long life.

Safety

- Curve automatic deceleration devices, more safe.
- Vehicle decelerates automatically at higher position.
- Stepless speed control system, safe and quiet.
- Controller with Multiple automatic protection.
- Emergency reversing device/Emergency brake switch.
- High position automatic reduction device.



Economical straddle typed stacker

Steering automatic deceleration

AG | EPS | Down mode at 3 speeds

Truck automatically decelerates while at higher lifting position

Type	Lift height (mm)	Mast type	Outside width between legs (mm)	Inside width between legs (mm)
CDD14-920	1400/2000/2500/3000/3300/3600/4000	Standard 2-STAGE	1170/1320/1470/1650	970/1120/1270/1450
CDD16-D920	1400/2000/2500/3000/3300/3600/4000	Standard 2-STAGE		
CDD16-960	3700/3900/4200/4500/4700/5000	FULL FREE 3-STAGE		
CDD16-360	5300/5500/5800	FULL FREE 3-STAGE		

HELI CDD14/16

Feature	CDD14	CDD16	CDD16	CDD16
Model	920	D920	960	360
Configuration No.	Wide legs	Wide legs	Wide legs	Wide legs
Type	Standard 2-Stage	Standard 2-Stage	Full free 3-Stage	Full free 3-Stage
Mast type	kg	1400	1600	1600
Load capacity	mm	600	600	600
Load center	mm	1310	1310	1375
Wheel base	Operating type Walkie/Stand On			
Operating type	Wheels			
Wheels type	PU	PU	PU	PU
Wheel quantity/Driving wheel/ Balance wheel/Bearing wheel	1/2/4	1/2/4	1/2/4	1/2/4
Dimension	Standard lift height			
Standard lift height	mm	1400/2000/2500/3000/ 3300/3600/4000	1400/2000/2500/3000/ 3300/3600/4000	3700/3900/4200/ 4500/4700/5000
Lowered fork height	mm	55	55	55
Fork size(length/width/thickness)	mm	1070/100/40	1070/100/40	1070/100/40
Overall length	mm	2005/2425	2005/2425	2073/2493
Overall width	mm	1470	1470	1470
Max. extend height	mm	1900/2500/3000/3500/ 3800/4100/4500	1900/2500/3000/3500/ 3800/4100/4500	4200/4400/4700/ 5000/5200/5500
Mast lowered height	mm	1185/1335/1765/1980/ 2135/2335/2500	1185/1335/1765/1980/ 2135/2335/2500	1800/1900/1985/ 2085/2135/2235
Min. Turning radius	mm	1565/1975	1565/1975	1630/2040
Min. Aisle width for pallets 800×1200	mm	2230/2560	2230/2560	2230/2625
Min. Aisle width for pallets 1000×1200	mm	2260/2585	2260/2585	2260/2650
Min. ground clearance	mm	50	50	50
Performance	Travel speed,laden/unladen			
Travel speed,laden/unladen	km/h	5/5	5/5	5/5
Lift speed,laden/unladen	mm/s	130/230	130/230	130/230
Lowering speed,laden/unladen	mm/s	130/230	130/230	130/230
Gradeability,laden/unladen	%	5/7	5/7	5/7
Electrical configuration	Drive motor/Lift motor/Steering motor			
Drive motor/Lift motor/Steering motor	kW	AC1.5/DC3/DC0.15	AC1.5/DC3/DC0.15	AC1.5/DC3/DC0.15
Battery voltage	V	24	24	24
Battery capacity	Ah	280	280	280
Brake	Electromagnetic/Regenerative			
Controller	CURTIS			
Weight	Battery weight			
Battery weight	kg	250	250	250
Service weight with battery	kg	1300	1370	1648

* Details of specifications and equipment are based on information available at time of printing and may change without notice.



ANHUI HELI INDUSTRIAL VEHICLE IMP. AND EXP. CO., LTD.

ADD: 668 FANGXING ROAD, HEFEI, ANHUI, CHINA
TEL: +8655163639068
FAX: +8655163639966
Email: heli@helichina.net
WEBSITE: WWW.HELICHINA.COM / WWW.HELICHINA.NET

© 2015 heli copyright

Catalog No.2015.04 HELI Print