



**KINYA**

Key Innovation in Your Access

*PRODUCT CATALOG*

# ▶ POSTERIOR VITRECTOMY SYSTEM

Introducing V HOPE - the embodiment of technology and dependability for vitreoretinal procedures. V HOPE provides surgeons with the tools necessary for meticulous surgical performance by merging the forefront of vitrectomy technology with an ergonomic design.



- ▶ *Cut rate of 10,000 cuts per min*
- ▶ *20,000 cuts per min with dual blade cutter*
- ▶ *Venturi pumps*
- ▶ *80Watt LED light source*
- ▶ *Automated infusion control*

*Emergency Control mode*

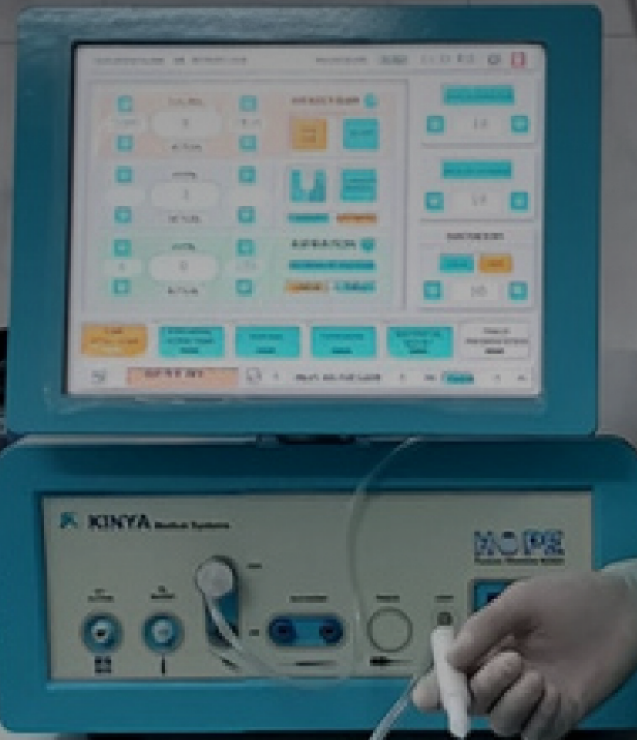
## User-Centric Design

*Graphical User Interface (GUI):* Equipped with a 15 inch resistive touchscreen, providing an intuitive, voice-activated interface that simplifies complex surgical tasks.





**H**ARMONIOUS  
**O**PTIMAL  
**P**REDICTABLE  
**E**EASY TO USE



With V HOPE, experience a harmonious blend of technology and comfort, designed to deliver an optimal and predictable surgical journey that is efficient and user-friendly.

# Enhanced Surgical Capabilities

*Ultra-High Speed Vitrectomy:* Delivers meticulous control with 10000 cuts per minute through an optimized duty cycle and 3D vitrectomy functionality for superior surgical outcomes.

*Phaco Fragmentation Probe:* Expand your surgical capabilities with our integrated Phacoemulsification probe, designed for efficient lens fragmentation, offering a multifaceted approach within the same platform.



*Endo-Illumination:* Features a powerful 80W White LED light source, with life span of 50,000 hours compatible with 23G, 25G, and 27G systems, providing exceptional illumination for intricate surgeries.

*Venturi Pump System:* The Venturi Pump System ensures a consistent and reliable flow, essential for the delicate balance required in posterior vitrectomy procedures.

*Diathermy Precision:* With an inbuilt diathermy at 1 MHz, achieve pinpoint coagulation, vital for minimizing intraoperative bleeding and enhancing surgical outcomes.



*Viscous Fluid Function:* Ensures smooth silicone oil injection and extraction process by linearly controlling injection pressure with up to 6.5 bar and an extraction vacuum up to 650 mmHg.

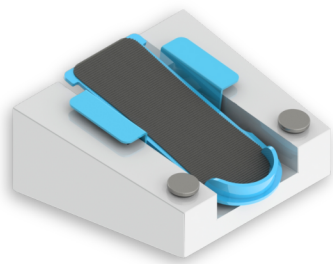


# Reliable Infusion and Pressure Systems

*Automated Eye Pressure Control:* Features an advanced safety mechanism to ensure stable eye pressure throughout the surgery, adapting seamlessly to any unexpected interruptions.

*Infusion System:* Offers a comprehensive pressure range (0-200mm Hg) with both gravity and automated options and infusion compensation for maintaining constant intraocular pressure.

*Air-Fluid Exchange:* Provides a broad range (0 - 200 mmHg) with an alternate pressure function, critical during complicated VR procedures.



*Foot Switch:* A linear multi functional pedal with six push buttons offers user-friendly operation, allowing surgeons to maintain focus while accessing different functions.

## Priortising safety and care

- *Emergency Mode:* Uninterrupted care with foot pedal-free operation, even in scenarios like foot pedal malfunction during surgeries.
- In case of unexpected power outages, the eye pressure will be sustained, whether in air or fluid.

## Easy of Use

- *Automatic Draining Cassette:* Enhances operational efficiency with an automatic draining system, reducing maintenance time and ensuring a clean, ready-to-use setup.
- *Separate line for extrusion,* it can help in 25G and 27G surgery.
- *Alternate vacuum feature* for PVD Induction.
- *PSI adjustment mechanism* for using different cutters.

## Specifications

- Power Supply: 100 - 240V
- Max Power Consumption: 600W
- Input Pressure: 7 - 8 bar
- Dimensions: 421 x 421 x 210 mm
- Weight: 32 Kg



# KINYA

**Key Innovation in your Access**



No:46,  
Ranga Rice Mill Building, Big Street,  
Nandivaram, Guduvanchery,  
Chengalpattu Dist. TN - 603202

Plot No.55,  
Mahalakshmi Nagar Ext-7,  
Nandivaram, Guduvanchery,  
Chennai, TN - 603202



+91 97890 41308  
sales@kinya.in  
kinya.in

\*\*The contents of the brochure may differ from the current status of approval of the product or service offered. Please contact our representatives for more information. Subject to changes in design and scope of delivery and due to ongoing technical development.