

**Hazard Materials
Integrated Emergency Management
Course**

Controller Handbook

Table of Contents

MONDAY

MONDAY AFTERNOON EXERCISE ORIENTATION	5
CHIEF EXERCISE CONTROLLER INSTRUCTIONS	5
ADJUNCT CONTROLLER SIMULATOR INSTRUCTIONS	5
TELEPHONE LIST	6
MONDAY NIGHT POLICY GROUP PLANNING SECTION.....	10
CHIEF CONTROLLER INSTRUCTIONS.....	10
POLICY CONTROLLER AND MEDIA CONTROLLER INSTRUCTIONS.....	10

TUESDAY

TUESDAY TANKER EXERCISE ORIENTATION.....	11
CHIEF CONTROLLER BRIEFING INSTRUCTIONS	11
TUESDAY TANKER EXERCISE.....	11
CHIEF CONTROLLER INSTRUCTIONS.....	11
ADJUNCT CONTROLLER SIMULATOR INSTRUCTIONS	11
TUESDAY TANKER EXERCISE DEBRIEF.....	11
CHIEF CONTROLLER INSTRUCTIONS.....	11
ADJUNCT CONTROLLER SIMULATOR INSTRUCTIONS	11
TUESDAY TANKER EXERCISE SUPPORT MATERIAL.....	13
INCIDENT OVERVIEW	13
TANKER MASTER SCENARIO EVENT LIST (MSEL)	15
NATIONAL WEATHER SERVICE UPDATE TO CENTRAL CITY/LIBERTY COUNTY EOC	41
NCIC MSG RELAY FROM DRI/MD0190100	42
TUESDAY EVENING PLANNING SESSION FOR EOC.....	43
CHIEF CONTROLLER INSTRUCTIONS.....	43
ADJUNCT CONTROLLER INSTRUCTIONS	43

WEDNESDAY

WEDNESDAY CRISWELL EXERCISE ORIENTATION	44
CHIEF CONTROLLER BRIEFING INSTRUCTIONS	44
ADJUNCT CONTROLLER SIMULATOR INSTRUCTIONS	44
WEDNESDAY CRISWELL EXERCISE	44
CHIEF CONTROLLER INSTRUCTIONS.....	44
ADJUNCT CONTROLLER SIMULATOR INSTRUCTIONS	44
WEDNESDAY CRISWELL EXERCISE DEBRIEF	45
CHIEF CONTROLLER INSTRUCTIONS.....	45
ADJUNCT CONTROLLER SIMULATOR INSTRUCTIONS	45
WEDNESDAY CRISWELL SUPPORT MATERIAL.....	46
CRISWELL MASTER SCENARIO EVENT LIST (MSEL).....	46
MESSAGE REGARDING SHIPMENT OF PATHOGENIC ORGANISMS	79

NCIC MSG RELAY FROM DRI/MD0190100.....	80
CENTRAL CITY FIRE DEPARTMENT	81
CRISWELL CHEMICAL – HANDOUT # 1.....	81
CRISWELL CHEMICAL – HANDOUT # 2.....	83
FACILITY FIREFIGHTING CAPABILITY ASSESSMENT	85

THURSDAY

THURSDAY TRAIN DERAILMENT EXERCISE ORIENTATION	86
CHIEF CONTROLLER INSTRUCTIONS.....	86
THURSDAY TRAIN DERAILMENT EXERCISE	86
CHIEF CONTROLLER INSTRUCTIONS.....	86
ADJUNCT CONTROLLER SIMULATOR INSTRUCTIONS	86
THURSDAY TRAIN DERAILMENT EXERCISE DEBRIEF	87
CHIEF CONTROLLER INSTRUCTIONS.....	87
ADJUNCT CONTROLLER SIMULATOR INSTRUCTIONS	87
THURSDAY TRAIN EXERCISE SUPPORT MATERIAL.....	88
TRAIN MASTER SCENARIO EVENT LIST (MSEL)	88
TRAIN PLOT PLAN	152
TRAIN CONSIST	153
PLACEMENT OF FREIGHT TRAIN CARS.....	154
MSDS.....	157

MONDAY AFTERNOON EXERCISE ORIENTATION

Chief Exercise Controller Instructions:

1. Send out a questionnaire which will be submitted at registration. This questionnaire will be used to assign students to group work during the class.
2. Assign students to positions within the EOC based on their functions at home (predicated on questionnaire responses) and on the class requirements. Positions that cannot be filled based on student experience are assigned to controllers.
3. Assign students to Policy, Coordination, and Operations functions.
4. Given the template, develop and distribute the telephone directory and make up position tents.
5. Give the presentation on the orientation to the exercise and the orientation to Central City (tentatively 1 hour). Note: Discuss the artificiality of the class and exercises with the class.
6. Introduce the adjuncts and assign students to each adjunct for the Walkthrough of the locations for Policy, Coordination, Operations, and controller's room. Review the equipment and resources in each room.
7. Ensure (with the Course Manager) that the refreshments have been delivered.

Safety is always first.

Adjunct Controller Simulator Instructions

1. Participate, as needed, to develop the phone directory and make position tents.
2. Take the assigned discipline group and tour the lab facility.
3. Explain the three functions (Policy, Coordination, Operations).
4. Answer questions and emphasize the integrated approach to critical decision making at all three levels.
5. Review the exercise concept and key points such as, "You must call the exercise control group to make anything happen!" (such as assigning resources).
6. Discuss key issues that need to be accomplished during the exercise, such as tracking incidents.

Telephone List

Policy Group & Joint Information Center

Position	Name	Ext
Policy/Management Group		
1. County Council Member	_____	8185
2. County Council Member	_____	8182
3. Mayor	_____	8184
4. County/City EMA Director	_____	8180
5. Police Chief	_____	8197
6. Fire Chief	_____	8181
7. Public Works Director	_____	8186
8. County Sheriff	_____	8191
Joint Information Center (JIC)		
9. Lead Public Information Officer	_____	8194
Fax # for Policy & JIC		8195

Emergency Operations Center (EOC)

Position	Name	Ext
EOC Management and Support		
1. EOC Manager	_____	8124
2. Assistant EOC Manager	_____	8125
3. Liaison Officer	_____	8111
4. Public Information Officer	_____	8126
 Planning Section		
5. Planning Section Chief	_____	8127
6. Situation Unit Leader	_____	8112
7. Demobilization Unit Leader	_____	8117
8. Documentation Unit Leader	_____	8113
9. Technical Specialist (HazMat)	_____	8128
10. Technical Specialist (Pub Health)	_____	8118
 Logistics Section		
11. Logistics Section Chief	_____	8137
12. Medical Unit	_____	8131
13. Support Branch Coordinator	_____	8135
14. Finance	_____	8121

Emergency Operations Center (EOC)

Position	Name	Ext
<hr/>		
Operations		
1. Operations Section Chief	_____	8122
Fire/Branch		
2. Fire Branch Director	_____	813
3. Operations Unit	_____	8140
4. Fire/EMS Dispatch	_____	8142
5. Fire EMS Call Intake	_____	
EMS/Health Branch		
6. EMS/Health Branch Director	_____	8148
7. Hospital Branch	_____	8146
Law Enforcement Branch		
8. LE Branch Director	_____	8104
9. LE Dispatch	_____	8103
Public Works/Utility Branch		
10. Public Works/Branch Director	_____	8106
Fax # for EOC		8123

Exercise Control Room

Position	Name	Ext
1. Fire	_____	8087
2. EMS/Hospitals	_____	8088
3. Health	_____	8096
4. Law Enforcement	_____	8083
5. Public Works/Utilities	_____	8082
6. Community Services	_____	8090
7. Emergency Management	_____	8098
8. Government	_____	8098
9. Media	_____	8198
10. Chief Exercise Controller	_____	8081
11. Fax for Control Group		8080
12. Fax for Media Center		8095

MONDAY NIGHT POLICY GROUP PLANNING SECTION

Total Time: Evening (no time limit)

Chief Controller Instructions

Chief Controller is present for the Monday night planning session as an observer.

Policy Controller and Media Controller Instructions

1. Guide the Policy Group
 - a. Discuss the policy statement. Should address the following:
 - The Policy Group's expectation of Coordination and Operations to include timing and scope of periodic updates
 - The statement should include how the Policy Group expects the other two groups to apply the issues of law and statute contained in the ESSD (Electronic Simulation System Document).
 - Policy statement has to be in writing (word document) and must be delivered in a PowerPoint presentation to the entire class Tuesday morning.
 - b. Discuss how the Policy Group will work as a team including individual and group concerns.
2. Identify anything that will help the group run smoothly (covering phones, chain of command within the group, etc.).
3. Policy Controller and Media Controller should cover the following:
 - a. Emphasize that policy is strategic.
 - b. This is not an operational position; the difference is between policy and operations.
 - c. Students in Policy Group are responsible for evacuations and declarations.
 - d. The Policy Group is the face of the incident to the public.
 - e. The incident occurs in Central City, and these resources and processes in Central City may be different than those in your home community.
4. PIO must attend this meeting because they work for the Policy Group and are able to meet their leadership and understand their supervisors' concerns.

Note: PIOs may be asked to write press releases, manage media briefings, and respond to media inquiries.
5. Discuss the artificiality of the class and exercises with the Policy Group.
6. If there are a lot of students that are PIOs, then the Media Controller will separate this group and meet with them separately.

TUESDAY TANKER EXERCISE ORIENTATION

Total Time: 15 min.

Chief Controller Briefing Instructions

Brief reminder that the exercise will open with a media broadcast and a reminder of the organization structure. What questions do students have regarding the exercise and planning session last night? Brief on any equipment issues, etc.

TUESDAY TANKER EXERCISE

Total Time: 1 hour 30 min.

Chief Controller Instructions

Communications exercise used to test the equipment and the room. Used to allow the students to identify message flow and identify what documentation is necessary. Students become familiar with their role in the simulation.

Adjunct Controller Simulator Instructions

Start to identify which students need more support and mentoring and which students can assume the leadership role.

Make sure all of the resources are available. Remind students of any available resource locations, etc.

Use the MSEL that follows. Acronyms used: F=Fire, P=Police, M=Media, PH=Public Health, EM=Emergency Management, EMS=Emergency Medical Services, CS=Community Services, G=Government, U=University.

Make sure everything works and is set up the best it can be (phones, assignments, etc.)

TUESDAY TANKER EXERCISE DEBRIEF

Total time: 15-20 min.

Chief Controller Instructions

Send the adjuncts into the exercise rooms to lead a discussion of the Hot Wash.

Adjunct Controller Simulator Instructions

- Adjunct conducts the Hot Wash using an easel pad in the Policy, Operations, and Coordination rooms.

- Identify issues regarding the functions of the exercise rather than the outcomes.
- Focus on the students' roles rather than how well they addressed the tanker incident.
- The debrief should be short.
- Adjunct feeds back to the chief controller regarding student performance and operability of the equipment, etc. to incorporate in the Wednesday Afternoon Exercise

TUESDAY TANKER EXERCISE SUPPORT MATERIAL

Incident Overview

Fifteen minutes ago, numerous citizens reported an overturned gasoline (placard 1203) tanker on I-107 at SR-5 in the northbound lanes. Citizens also reported that several other vehicles were involved in the accident.

First arriving fire and EMS units at the incident included the following: E-4, E-5, E-3, Tower Ladder 3, Squad 1, ALS M-4, Battalion 2, Squad 1, and Ambulance 4. Battalion Chief 2 Engine 4 has requested a 2nd alarm assignment.

First arriving law enforcement units at the incident included the following: CC 111 - SP 1 T.

The initial report from the Battalion Chief to Dispatch included the following information:

- An 8,000 gallon tanker has been involved in an accident and has spilled its contents at the southeast exit ramp of I-107/5th.
- Heavy fire is visible around the overturned tanker, and fire has fully involved a two-story dwelling at I & 6th Streets.
- Fire appears to be spreading eastward along 6th Street. There are numerous other homes in the area and power sub-station 4.
- An unknown amount of material appears to have developed into the storm sewer system. May still have people in homes in the fire area.

The initial report from ALS M 4 (Medic 4) to dispatch included the following information:

- 3 other vehicles involved in the accident
- Unknown initial injuries
- Truck driver trapped
- Requesting EMS supervisor and additional EMS units (3 ALS and 1 BLS)

The initial report from City Police Unit CC 211 included the following information:

- Have a tank truck and 3 other vehicles involved in the accident
- At least 5 injuries
- Requesting additional units for traffic control along 6th Street
- Have homes on fire in the area

The initial report from State Police SP 1T included the following information:

- Located south of the scene, in traffic, at 107/9th Street
- Reports large traffic back up and fire/smoke north of location

- Requesting additional units

Second alarm fire companies responding to the scene include Central City Command Staff and E-2, E-1, E-11, T-5, R-5.

Additional arriving EMS to the scene includes the following: ALS M 1, ALS M 2, BLS A 5, ALS M 7.

Additional arriving law enforcement units to the scene include the following CS 210, CC 212, CM 213, and SP 2 T.

Tanker Master Scenario Event List (MSEL)

#	Controller	Involved	Technology	Inject	Expected Action Supplemental Information for Controller
1	F	F	Radio	<p>Engine 4 assumes Unified Fire Commander position and reports to EOC Fire Operations: Report gasoline tanker has overturned on the I-107 exit ramp to SR 5/10 near 6th and H Streets and suffered a breach in a compartment of the tanker. A large amount of gasoline leaked from the compartment before it ignited.</p> <p>Pooling gasoline along 6th Street has now ignited. Radiant heat is threatening the homes along the south side of 6th Street.</p> <p>Unburned gasoline has flowed into the storm sewer system and Swatera Creek before ignition occurred. Three other vehicles are involved in the accident and there are multiple injuries. The truck driver is trapped in the cab of the overturned tanker, but fire has not yet involved the tanker cab.</p> <p>Need FD boom and sand to stop flow of gasoline into creek and prevent material from flowing down creek.</p> <p>Police units are assisting Engine 5.</p>	<p>Request PW and Utilities</p> <p>Are PW operators certified on SCBA's?</p> <p>Turn off Power, gas, etc. in the area of the overturned tanker. Isolate two block perimeter. Need barricades.</p> <p>Tower Ladder 3 has split the company into two groups: Group 1-Search/Rescue: Group for searching homes along 6th Street for trapped occupants Group 2-Extrication: Group to remove the trapped truck driver and assist with the accident victims.</p> <p>Engine 4 has been assigned as Division A (Alpha) on 6th Street for Fire Control. Engine 5 has been assigned to establish an Evacuation Group. Engine 3 has been assigned to Division D (Delta) on 6th Street for exposure protection. Squad 1 has established a HazMat Group.</p>

#	Controller	Involved	Technology	Inject	Expected Action Supplemental Information for Controller
2	EMS	EMS, F ALL	Radio	<p>ALS M4 reports to Unified Incident Command Post and assumes EOC Unified Commander position.</p> <p>Report Unified EMS Commander to EOC EMS Operations:</p> <p>ALS M4 has established a Medical group. There are multiple injuries in this accident. At least three other vehicles are involved in the accident. The truck driver is trapped in the cab of the overturned tanker truck and other victims are trapped in their vehicles. Firefighters are reporting that they may have some occupants trapped in their homes along the south side of 6th Street. Notify Central City Hospital Trauma Center of potential multiple admissions. We need additional ambulances.</p>	<p>Anticipate type of injuries such as trauma, burn, and smoke inhalation; establish a transportation plan; and make a trauma admission "pre-alert" to Trauma receiving-by medical group</p>
3	P	P, F	Radio	<p>CC 211 reports Unified Command Post and assumes Unified Police Commander position.</p> <p>Report Unified Police Commander to EOC Law Enforcement Operations:</p> <p>Requesting 6 additional police units to assist with the evacuation of residential area at I and 6th Streets. Report scene conditions described in incident #1.</p>	<p>Six PD personnel to be drawn from Areas 2+3 to respond to scene</p>

4	M	M, F	Phone	Media inquiry to PIO in field: Location of accident, status, injuries, etc. How close can we get to the scene?	Media are advised that due to life hazard they have no direct access to the scene at this point. Media are being staged at PD's Area 2 Cop Shop –Northeast, located at 11 th and E Streets. PIO will be at that location. One FD PIO is directed to that location.
5	M	M	Phone	Media inquiry to EOC PIO: What information do you have on the tank truck accident? We have heard a gasoline tanker is on fire. Is that correct?	
6	M	M, PH, P, F	Radio Fax	Media inquiry to EOC Public Health Official: What are the health effects of gasoline exposure? We heard that there has been a large gasoline explosion on the interstate.	PH responds that information about scene conditions is provided by FD PIO. To address the health effects of gasoline, PH <u>faxes</u> the following to the media: “Many adverse health effects of gasoline are due to individual chemicals in gasoline, mainly BTEX, that are present in small amounts. Breathing small amounts of gasoline vapors can lead to nose and throat irritation, headaches, dizziness, nausea, vomiting, confusion, and breathing difficulties. Symptoms from swallowing small amounts of gasoline include mouth, throat, and stomach irritation, nausea, vomiting, dizziness, and headaches. Some effects of skin contact with gasoline include rashes, redness, and swelling. Being exposed to large amounts of gasoline can lead to coma or death. More information will be provided as the situation clarifies.”

#	Controller	Involved	Technology	Inject	Expected Action Supplemental Information for Controller
7	M	M	Phone	Media inquiry to EOC PIO: What information do you have on the tank truck accident? We have heard a gasoline tanker is on fire.	
8	F	F, P, PW	Radio	<p>Battalion 2 reports to Unified Command Post and assumes Unified Fire Commander.</p> <p>Report Unified Fire Commander to EOC Fire Operations: Both sides of J Street between 6th and 7th Streets should also evacuate. The fire is spreading in an easterly direction along 6th Street. There is also a large warehouse at 6th and J Streets that needs to be evacuated and protected.</p> <p>Request PW representative to report to Unified Command Post. The Columbia Veterans Hospital is located at 7th and J Streets. No evacuation has been ordered at this time. Will need additional resources to assist in the evacuation if hospital evacuation is required</p>	<p>Evacuation Group is in the process of evacuating occupancies on the south side of 6th Street between I and J Streets and both sides of I Street between 6th and 7th Streets.</p> <p>Establish safe holding area for evacuees; request that shelters be opened; and request buses for transportation from the evacuation holding area to opened shelters.</p> <p>Need to control utilities and isolate area by use of barricades.</p>
9	CS	P, PW	Phone Radio	<p>Citizen calls Public Works Dispatch: Reports water main break at Z and 9th Streets in Central City!</p> <p>Minor Flooding in the intersection! Will need barricades/traffic control, etc.</p>	<p>Reduced water pressure in area.</p> <p>Request Police for traffic control.</p>

10	CS	EMS, F	Phone	Citizen calls EMS Dispatch: There is a subject with chest pains and cardiac history at the Highland Park K and 10 th Apt 402.	
11	P	P, PW, F	Radio	City Police Unit reports: Traffic signals out at the intersection of X and 19 th Streets in Central City! Traffic backup ensues.	Notify traffic control (LE)!
12	CS	G, PW, M	Phone	Citizen calls EOC Public Works Official: Residential trash collection missed along 37 th Street between DD and HH. When will it be picked up? Media issues press release that citizens should contact the City at 1-800- 273-TRAS for any accumulated trash that needs pickup.	
13	CS	G, PW	Phone	Citizen calls EOC EPM : Can you do something about the large amount of trash at the Southside Park Complex at S and 33 rd Streets? Things really look bad!	Request PW to clean-up debris in the street.
14	P	P, PW	Radio	State Police Unit reports 2-car traffic accident on I-107 at 30th Streets in Central City! Need wreckers – vehicles blocking the roadway!	Due to increasing traffic control problems, the City Police are requesting that the County Sheriff's Department provide six patrol units to assist with traffic.
15	CS	PW, P	Phone	Citizen calls Public Works Dispatch: Reports a manhole cover dislodged at AA and 12 th Streets in central city causing driving problems. There are also several large potholes in the area adding to the hazardous driving conditions!	

#	Controller	Involved	Technology	Inject	Expected Action Supplemental Information for Controller
16	F	F, ALL	Radio	Report Unified Fire Commander to EOC Fire Operations: Fire has spread to a two-story dwelling at 6 th and I Streets. There is a tremendous amount of radiant heat coming from the gasoline tanker fire which is threatening other dwellings along 6 th Street. Embers coming from the two-story dwelling are landing on rooftops along 6 th Street and could continue to spread fire.	Request 3 rd Alarm. Evaluate exposures protection plan.
17	EM	EM, PH	Phone	State EOC calls EOC EM: Requesting status report of tanker accident; have already heard reports of running gasoline into the Swatera Creek. We would like ten minute updates on the situation.	
18	PH	PH		State EOC's Public Health desk calls EOC Public Health Official: When environmental health specialist gets on scene, he/she advises whether the State's Department of Environmental Quality and/or EPA should also respond to the scene to assist with water sampling.	
19	G	G	Phone	City Council Person is at an afternoon Meeting at the Columbia Vets Hospital (J and 7th) that includes 2 other City Council Members. Make a call to EPM: Wanting an update on the fire situation. Are we in any danger at this location? Fire is close to the Hospital; smoke in the area.	

20	P	ALL, PW, P	Radio	SP update to Police Dispatch: Shutting down I-107 at 15 th northbound and shutting down traffic at SR 5 at N Street East Bound and SR 5 at A Street Westbound. Also diverting southbound traffic on I-107 at SR5 to the West.	Due to multiple road closures, the State Police is sending one of its Bell 206 Request Jet Rangers to overfly these areas. The helicopter will provide information to ground units about the effectiveness of traffic diversion actions. Request PW Barricades.
21	CS	CS	Phone	Principal at Wilson ES calls Fire Dispatch: Have heard sirens in the area south of us. Are we in any danger? Location: K and 3 rd Streets	
22	CS	CS	Phone	Assistant Principal at J.D. Lerew JHS calls Police Dispatch: I heard a terrible crash in area and heard that a bus may be involved. Can you give us any information? Location: I and 11 th	
23	PW	PW	Radio	Storm Sewer/Drainage Supervisor calls Public Works Dispatch: Heard that a gasoline tanker spilled contents into storm sewer system up around I-107 and SR-5. Can you confirm?	Request confirmation from FD.
24	P	P,F, EMS PH	Phone FAX	NCIC message: To all area police departments on missing pathogenic organisms on-route to central city	(Follow-up with phone call to Central City PD from Baltimore PD -- see fax) Message also sent to MDT of EMS Supervisor. PH requests further information on missing pathogenics (did not receive fax that went to PD). Please describe quantities and types (Category A, B, C), and provide them with MSDS sheets, etc.

#	Controller	Involved	Technology	Inject	Expected Action Supplemental Information for Controller
25	F	F, ALL	Radio	<p>Report Unified Fire Commander to EOC Fire Operations: The gasoline tanker contained 8,000 gallons of gasoline. The gasoline tanker reportedly has four baffle plates for compartmentalizing. Each compartment contains 2,000 gallons of gasoline. The back compartment has suffered the breach. It appears that a large amount of unburned gasoline did flow into the storm sewer system and Swatera Creek before ignition occurred.</p>	Request additional foam supply.
26	PW	PW	Radio	<p>PW supervisor has arrived at Unified Command Post and assumes PW Unified Commander position.</p> <p>Report Unified PW Commander to EOC PW Operations: Vapor readings in the storm sewer system presently are above the UEL. Additional foam is needed for extinguishing the gasoline fire around the tanker.</p>	Public Works reports high UEL levels in the storm sewer system.

27	EMS	EMS, F	Phone	<p>ALS M 1 arrives at Unified Command Post and assumes the Unified EMS Commander position.</p> <p>Report Unified EMS Commander to EOC EMS Operations: Medical group reports that there are at least seven victims involved in the accident including the truck driver who is still trapped in the cab of the tanker. Three injuries are severe trauma that have multi-systems trauma-red tags, and four injuries are moderate <u>patients</u> with yellow tags. One victim has been extricated and is suffering from severe head trauma-red tag. Can you notify Central City Hospital of the trauma transport? Expect more similar types of transports.</p>	<p>Notify hospital trauma Transport.</p> <p>Check Central City Hospital capability to provide for multiple trauma patients.</p> <p>Expand medical <i>group</i> to include triage, treatment, and transportation units/groups.</p>
28	F	F	Radio	<p>Report Unified Fire Commander to EOC Fire Operations: There is a lot of radiant heat coming from the gasoline fire which is threatening the dwellings on 6th and I Streets.</p>	<p>Request 4th alarm for exposure protection.</p>
29	CS	F	Phone	<p>Citizen calls Fire Dispatch: House across the street is on fire with smoke coming from a second story window. Location B and 6th in Kingston.</p>	
30	CS	F, EMS	Phone	<p>Westside Warehouse Manager calls Fire Dispatch: Worker is caught in elevator -- leg mangled between the elevator door and the opening on the 2nd floor. Need assistance! Location: AA and 15th Streets.</p>	

#	Controller	Involved	Technology	Inject	Expected Action Supplemental Information for Controller
31	CS	P	Radio	Citizen calls Police Dispatch: House was broken into sometime during the past week -- we were away on vacation in Emmitsburg, MD! Could you send someone to investigate? Location: Mennig Housing Development, SR19 at I-102.	
32	CS		Radio	Citizen calls. Police dispatch reports two-car accident: At Z and 15 th Streets in Central City, cars are blocking the roadway but there are no injuries!	
33	PW	PW	Phone	County Public Works Director calls EOC PW Director: Wants to discuss corps of engineers report on East Lake Dam.	
34	F	ALL, P	Radio	Kingston Engine reports to EOC Fire Operations: House fire at B and 6 th in Kingston. First arriving units at house fire at B and 6 th in Kingston reports second story dwelling, occupied, fully involved -- may have elderly woman still inside!	Request police, EMS, utilities. Report later incident can be handled by two engines and one ladder.
35	CS	P, EMS, F	Phone	Citizen calls Police Dispatch: Reports gun shots being fired outside Warble's Machine Shop on Route 5, two miles north of Harvest Junction! Need assistance!	Request Police, EMS assistance!

36	F	F	Radio	<p>Report Unified Fire Incident Commander to EOC Fire Operations: Fire is continuing to spread eastward along 6th Street. Fire has now involved several dwellings along 6th Street. Radiant heat along 6th street continues to spread the fire.</p>	Request 5 th Alarm for fire control efforts.
37	P	P,F,PW	Radio	<p>Report Unified PW Commander to EOC PW Operations: Requesting 50 barricades to assist with traffic control.</p>	Request 50 additional barricades from PW at J/7 th .
38	P	P	Radio	<p>Report Unified Police Commander to EOC Police Enforcement Operations: Need 50 barricades to assist with traffic control.</p>	
39	M	M	Phone	<p>Media inquiry to EOC PIO: We have heard that people are evacuating. What is the count on people, injuries, deaths, number of vehicles involved, traffic routes, etc.? When will you be issuing a press release?</p>	
40	F	F, EMS	Radio	<p>Report Unified Fire Commander to EOC Fire Operations: Report two unconscious victims from the 3rd floor of a three-story dwelling on I/6th Street. Both are very elderly and require hospital treatment; they are suffering from severe smoke inhalation. The victims are being transferred to the Medical Group.</p>	<p>Make sure there are EMS transports. Need additional resources for search/rescue of other dwellings along the South Side of 6th Street.</p> <p>Request an additional ladder company.</p>
41	M	M	Phone	<p>Media inquiry to EOC PIO: Have you heard that people are evacuating? What is the count on people, injuries, deaths, number of vehicles involved, traffic routes, etc? When will you be issuing a press release?</p>	

#	Controller	Involved	Technology	Inject	Expected Action Supplemental Information for Controller
42	EM	EM	Phone	State Military Affairs Officer calls EOC EM: What is the situation at the Veterans Hospital?	
43	PH	EMS, PH	Phone Fax	State Health calls EOC Public Health Official: What is the situation about the long-term health effects of gasoline in the storm sewer.	The health effects of being exposed to gasoline over long periods of time are not well known. This is because people exposed to gasoline are usually exposed to many other things that also can cause health effects. Some workers who are exposed to gasoline every day in their jobs have suffered memory loss and decreased muscle function. This exposure would surely be much more than that of responders or citizens potentially exposed during the current incident. At very high levels, however, some of the chemicals in gasoline, such as benzene, are known to cause cancer. But current evidence does not show that a single exposure to low levels of gasoline causes cancer in humans.

44	F	F	Phone	Goldmine VFD Chief calls EOC Fire Operations. Have Response crews on scene at Route 5, 1 mile south of Goldmine -- have found a 55-gallon drum of a leaking (unknown) chemical. Need assistance. Could City send us a HazMat Team to assist us?	Request a HazMat Team to assess the situation
45	CS	PW, P	Phone	Citizen calls Public Works Dispatch: Large tree limb down blocking the roadway at W and 30 th streets.	
46	P	P, F, EMS ALL	Radio	State Police Unit SP 2 T: Reports 3-car accident at the intersection of I-102 and I-107 on the northbound lanes. First arriving units request extrication team. There is one person trapped along with 3 other injuries!	Request Fire, Police, EMS.
47	CS	PW	Phone	Construction firm calls EOC Public Works Official: Would like to know if the city has a program to use private engineers for building inspections after an earthquake. Several engineers in the firm recently attended a conference put on by State Emergency Management. Would you like to become involved?	
48	CS	PW	Phone	Citizen calls PW Building Official: I just purchased an apartment complex in Central City and will be doing some renovations. What are the requirements for earthquakes? Location: X and 22 nd streets.	
49	CS	CS	Phone	Chamber of Commerce Rep calls EOC EPM: Would like to start an earthquake preparedness program for the mobile home parks in the Central City area -- could the Chamber and City sponsor this event?	

#	Controller	Involved	Technology	Inject	Expected Action Supplemental Information for Controller
50	CS	G	Phone	Community Leader call to EOC EPM: Richard Rubin, Manager Of Liberty County National Bank, wants to hold an earthquake preparedness seminar for financial institutions. Can the City provide any support? We would foot all costs.	
51	M	All	Phone	Media calls EOC EPM: What is the City policy on the emergency purchase of equipment and supplies? Is there an Emergency Procurement Policy/Procedure? Follow up if necessary!	
52	G	G, EPM, M, EM	Phone	Media calls to EOC EPM: Who can declare a local emergency in Central City/Liberty County? What authority does a local declaration give local policymakers?	Check if PIOs are drafting a response to these media inquiries and are checking with appropriate city officials to obtain information about policies.
53	EPM	G, EPM	Phone	Central City Councilmember Dan Gable to EOC EPM: I recently attended an excellent training session on emergency management in Emmitsburg, MD. I would like to discuss the use of private resources during emergencies! Have contracts been drawn up, etc.? Call made to EM Chairperson, PW, etc.	
54	EPM	EPM	Phone	FEMA Region 11 Rep calls EOC EPM : Want to set up a luncheon meeting to discuss hazardous materials emergency preparedness.	

55	M	EMS, PH, M	Phone	Media inquires to EOC Public Health Official: Want to know the roles and responsibilities of the Health Department during hazmat incidents. Does the county have any air monitoring capabilities or Hazmat experts? What is the role of the state health department?	Public health roles and responsibilities are described in the ESSD. PIOs will be provided extracted information by PH about these roles and responsibilities. PIOs will then draft a media response. These can be in the form of a backgrounder or distributed by directly contacting the enquiring media by phone.
56	M	CS	Phone	Media calls to EOC EPM: Concerning roles in disaster situations -- would the schools be utilized as shelters? Are school officials involved in shelter management? Inspection for use?	
57	F,P	F,P,PW	Radio	Report Unified Fire Commander to EOC Fire Operations: Report field units looking for an assembly area for evacuees. EOC will need to open shelters for evacuees. Transportation for the evacuees will be needed. It is estimated that 200 people will have to be evacuated. Columbia Veterans Hospital reports that they have 100 patients including 20 critical care patients.	
58	P	P	Radio	Report Unified Police Commander to EOC Police Operations: Report field units looking for an assembly area for evacuees. EOC will need to open shelters for evacuees. Transportation for the evacuees will be needed. It is estimated that 200 people will have to be evacuated. Columbia Veterans Hospital reports that they have 100 patients including 20 critical care patients.	

#	Controller	Involved	Technology	Inject	Expected Action Supplemental Information for Controller
59	EMS	PH, F,P EMS	Phone	Report EMS Unified Commander to EOC EMS Operations: Report two unconscious victims from the fire area, both elderly and suffering from severe smoke inhalation. May need hyper-baric accommodations.	State EOC public health desk has resource contacts for hyper-baric chamber. If needed, information will be provided to EMS and/or hospitals.
60	CS	PW	Phone	Private Contractor calls EOC Public Works Director: Wants to discuss developing a master list of private equipment available in the central city area in case of an emergency. Location/name: John Deere Company – E and 24 th Streets, Central City. Is there a “pre-disaster” Bid process for various EM/PW functions-debris removal, etc?	Can PW develop a list of needs?
61	CS	EMS, P	Phone	Citizen calls Sheriff's Dispatch: Reports 2-car MVA at State Route 5, three miles West of Central City – 1 person injured	
62	M	M	Phone	Media call to EOC EPM: I am writing an article on earthquake preparedness. Who is in charge of the preparedness efforts for the city? How do I reach him? When was the last county wide exercise?	

63	F	F, PW, ALL	Radio	<p>Report Unified Fire Commander to EOC Fire Operations: Fire is continuing to spread along 6th street. Embers have spread fire to the warehouse, and there is fire involvement in the roof area of the warehouse.</p> <p>The warehouse is occupied with bales of rolled paper. The building is not sprinkled.</p> <p>Be aware that the Columbia Veterans Hospital is at J and 7th Streets. If the fire in the warehouse intensifies, then the Hospital will become a severe exposure.</p>	<p>Need additional resources to control the spread of fire.</p> <p>PH may request a meeting of IMT to discuss expected outcomes of this inject. PH role: to coordinate any inter-hospital evacuation if that decision is made.</p> <p>PW shut off utilities.</p>
64	CS	G	Phone	<p>Citizen calls EOC EPM: Can you do something about the loud construction noise around the Criswell Chemical Company? Starts around 6:00 am and lasts well into the evening! Location: L and 12th Streets.</p>	
65	G	P,G	Phone	<p>Liberty County Manager calls Police Dispatch: Several County Supervisors want a Sheriff's Deputy sent up to East Lake Dam to report on its condition. Let's make them happy!</p>	
66	CS	P	Phone	<p>Store owner calls Police Dispatch: Reports of a theft at AA and 2nd Streets in Central City at Leroy's Family Restaurant!</p>	
67	PW	F,P EMS	Radio	<p>PW Sanitation crew to EOC PW Operations: Public Works Sanitation Crew finds empty pathogenic organism container near dumpster at CSU Student Union Building -- notifies PW Dispatch. LL and 29th streets.</p>	<p>Looking for contact with Public Health or EMS, etc.</p>

#	Controller	Involved	Technology	Inject	Expected Action Supplemental Information for Controller
68	F	F, EMS	Radio	<p>Report Unified EMS Commander to EOC EMS Operations: Two additional victims have been removed from the scene. One is the truck driver who has suffered severe neck/back trauma and 2nd-degree burns from the radiant heat.</p> <p>Victims are transferred to the Medical Group.</p>	
69	F	F, PW PH	Radio	<p>Report Unified Fire Commander to EOC Fire Operations: Fire personnel estimates that approximately 1,000 gallons of unburned gasoline may have flowed into the storm sewer and Swatera Creek. Need some booming equipment here to confine the gasoline in the creek and keep it from flowing towards the Roaring River.</p> <p>There is a slight vapor release occurring from the unburned gasoline. May need foam to suppress vapors coming from the gasoline in the creek. The vapor readings in the storm sewer are still above the UEL.</p> <p>Notify public works of the amount of gasoline estimated to have leaked from the tanker and also that a large amount of gasoline entered the storm sewer.</p>	<p>EPA is sending personnel to assess water quality issues at Swatera Creek. They will work in conjunction with State DEQ and PH. PH's environmental health specialist on-scene should be ready to provide a briefing when they arrive.</p> <p>F ask PW for an update and where does this storm drain go? Confirm!</p>

70				<p>Report Unified PW Commander to EOC PW Operations:</p> <p>The vapor readings in the storm sewer are still above the UEL. Need some booming equipment here to confine the gasoline in the creek and keep it from flowing towards the Roaring River.</p> <p>Estimate 1,000 gallons gasoline to have leaked from the tanker and also that a large amount of gasoline entered the storm sewer.</p>	
71				<p>Report Unified Police Commander to EOC Police Operations:</p> <p>Fire personnel estimates that approximately 1,000 gallons of unburned gasoline may have flowed into the storm sewer and Swatera Creek. There is a slight vapor release occurring from the unburned gasoline.</p>	
72	PH	PH ALL	Phone	<p>State Public Health Officer to Public Health Official:</p> <p>Further information on missing pathogenic. PH advises that the shipment of Bacillus Anthracis and Clostridium Botulinum has not yet been found. Both are Category 1 Agents which could cause serious illness or death. However, if the original shipping containers have not been breached, then neither agent poses health risks. Bacillus Anthracis is shipped in spore form, while Clostridium Botulinum is shipped as a liquid. PH requests that if the containers are found they be advised in case there is need of antidotes or antibacterial medications.</p>	

#	Controller	Involved	Technology	Inject	Expected Action Supplemental Information for Controller
73	EMS	EMS	Radio	<p>Report Unified EMS Commander to EOC EMS Operations: Report extrication efforts have successfully released two more of the trapped occupants.</p> <p>The other victim has suffered severe internal injuries. Four additional victims will require transportation. These injuries appear to be minor to moderate. All victims have now been extricated. Preparing to transport victims. Notify hospital of incoming patients and type of injuries sustained.</p>	
74	F	F,P PW	Radio	<p>Report Unified Fire Commander to EOC Fire Operations: All the houses along J Street from 6th to 7th Streets and I Street from 6th to 7th Streets have now been evacuated. The Hospital Administrator Columbia Veterans Hospital (J/7) is concerned about evacuating the hospital if the fire continues to spread. Hospital evacuation plan? Resources will be needed from EMS, PW, buses, etc.</p>	
75	CS	EMSF	Phone	<p>Citizen calls EMS Dispatch: My 18-year old son fell off the roof. He is coughing up blood. What should I do? I need an ambulance! Location: Y and 18th Streets.</p>	

76	M	M,P	Phone	WEMI TV calls EOC PIO: Do you have any information on the house fire at D/7 th Streets? Any injuries?	
77	M	M PW	Phone	Central City Times Reporter calls EOC PIO: What information do you have on the East Lake Dam inspection report? What is the condition of the dam?	
78	M	M PW	Phone	WEMI-TV calls EOC PIO: East Lake Dam questions	
79	M	M,P	Phone	WLOX radio calls EOC PIO: Can you update the accident on I-102 and I-107? Are there any injuries?	PIOs will be conducting a press briefing shortly to address these media questions. Time and location to be provided shortly.
80	M	M EMS	Phone	Radio Reporter calls EOC PIO: Can you update us on the health problem at Central City? Has any cause of the illness been determined?	
81	CS	EMS PH	Phone	Administrator of the Hill Top Nursing Home calls the EOC Public Health Official: Wants to discuss finalizing their emergency plan. Location J/3 rd Streets.	
82	CS	CS	Phone	Bus Barn Coordinator Chris Bath calls EOC Public Works Official: Provide bus maintenance report.	How many buses are available?
83	CS	P,F PW	Phone	Citizen calls Police Dispatch: Reports that a pickup truck has backed over a fire hydrant. Water is all over the place! Location: T and 10 th Streets.	PW ETA?

#	Controller	Involved	Technology	Inject	Expected Action Supplemental Information for Controller
84	F	F	Radio	<p>Report Unified Fire Commander to EOC Fire Operations: Report that all fire has been extinguished in the warehouse roof area. The fire spread has been stopped along 6th Street. No further spread of fire anticipated. One firefighter from Squad 1 has suffered neck and back injuries when part of the ceiling fell in the two-story dwelling where he was working, striking him in the head and back. He is unconscious has been taken to the Medical Group.</p>	
85	EMS	EMS F	Radio	<p>Report EMS Commander to EOC EMS Operations: Report one firefighter from Squad 1 who suffered neck and back injuries as a result of ceiling collapse while firefighting. He is unconscious. He will be referred to the trauma center (red tag).</p>	
86	M	M, CS	Phone	<p>Media inquiry to EOC PIO: Who is responsible for damage assessment in Liberty County/Central City?</p>	
87	M	M, CS	Phone	<p>Media call to EOC PIO: Could you give us the location in Central City where residents can donate blood? (Due to blood shortage.)</p>	

88	M	M, CS	Phone	Media inquiries to EOC Logistics Sections Chief: We are concerned with sheltering procedures in Liberty County. Have shelter locations been pre-designated? Schools, etc.	
89	ALL	ALL	Phone	Weather update: Winds are out of the NW at 5-10 miles per hour; currently have light rain with a temperature of 88 degrees.	
90	CS	F	Phone	Citizen calls Fire Dispatch: Reports his/her pet Capuchin Monkey got out of the house and climbed a nearby tree. Could the fire department help us get it out? (C/35 th Streets)	
91	EMS	F,P,P W	Radio	Report Unified Fire Commander to EOC EMS Operations: Report that they now have sufficient hose lines on the exposures on I Street. No further spread of fire anticipated.	
92	PW	F,P,E MS	Radio	Report Unified PW Commander to EOC PW Operations: Reports that foam is now being applied to the gasoline fire and progress is being made. Vapor readings in the storm sewer system are still above the UEL. A slight vapor release is still evident from the gasoline that is in the Swatera Creek.	
93	F	F	Radio	Report Unified Fire Commander to EOC Fire Operations: Report that all fire has been knocked down in the dwellings on 6 th Street and a foam application is being applied successfully to the gasoline fire.	

#	Controller	Involved	Technology	Inject	Expected Action Supplemental Information for Controller
94	G	G	Phone	City Councilmember calls EOC EPM: Wants to add something to council meeting agenda regarding citizens complaining about fire department vehicles go over the curbs.	
95	CS	EMS	Phone	Citizen calls EMS Dispatch: Help: my baby has swallowed some Drano! What should I do? She thought that those blue grains were "nerds" (one of her favorite candies)! Help! Location: M/3 rd Streets!	
96	CS, P	P	Radio	Citizen calls Police Dispatch: Fight has broken out in the Apple Valley Tavern at A/4 th Streets in Apple Valley -- need assistance! There is some guy in here from San Francisco who has been complaining about our dirty salt and pepper shakers; one of the barmaids smacked him upside the head and all hell has broken loose! We need help!	
97	M	G	Phone	Central City Times calls EOC PIO: We are going to be doing a feature on hazardous materials response. Who should we talk to about the probability, planning, preparedness, etc?	
98	M	M	Phone	WBND Radio calls EOC PIO: We understand that a gasoline tanker has been involved in an accident. Can you fill me in on the details?	

99	M	M	Phone	Channel 13 News calls EOC PIO: What is happening at I-107 and SR-5? Are there any injuries?	
100	M	M	Phone	Media calls EOC Fire Operations: We would like a statement on the tanker incident! Has any product gotten into the Swatera Creek? How did the accident happen?	
101	M	M	Phone	WEMI newsroom calls EOC Public Health Official: Concerning the leaking gasoline into the creek: What kind of damage will this do? Don't we get our drinking water from the creek?	PIOs are holding a press conference in one hour to address these issues as well as earlier ones. The location of the meeting will be faxed to all media representatives in 10 minutes.
102	CS	EPM	Phone	K-Mart Store Manager Joe Siffert, formerly the Police Chief in Lynchburg, VA, calls EOC EPM: We are located on the NW corner of the I-107 and SR 5 junction. Are we in any danger?	
103	CS	ALL	Phone	Citizens call dispatchers: Residents in area around tanker accident call EOC Sections for information, etc.	

#	Controller	Involved	Technology	Inject	Expected Action Supplemental Information for Controller
104	ALL	ALL	Radio	<p>Report Unified EMS Commander to EOC EMS Operations:</p> <p>Report Ongoing Incident Updates:</p> <ul style="list-style-type: none"> • Treatment and transportation of injuries from HazMat accident • Patient decon as required • Complaints of sickness from residents around tanker accident • Air monitoring groups for perimeter where complaints originate • Possible evacuation of patients from vets or movement of some patients from one building to another. Need buses. • Sand/diking materials from PW to halt flow of gasoline into creek • Question of gasoline into creek affecting water supply • Cleanup preparations 	

National Weather Service Update to Central City/Liberty County EOC

Date:

Current temperature in central city is 75 degrees; winds are out of the NW at 5-10 mph. There is light rain throughout the area with a chance of thundershowers later this evening. Rain could be heavy at times as a series of low pressure systems move through Southern Columbia.

NCIC MSG Relay from DRI/MD0190100

To: Central City Police Department
All Other Area Law Enforcement Agencies
From: Baltimore City Police Department
Col. Richard Lanham
Date:
Time: 1530 hrs
Subject: Possible hi-jack of a shipment of Class III (highly pathogenic organisms) on-route to Central City

We have just been notified by the U.S. Type Culture Collection Company of Baltimore, Maryland, that a shipment of Bacillus anthracis and Clostridium botulinum to a Dr. Clovis Bowden at the Columbia State University of Central City is missing.

We have put out an all-points bulletin concerning the size of the container, the labeling, and the pathogenic nature of the contents. Two packages were shipped federal express -- each contained a different material. The manufacturer has stressed that anyone not trained in the recognition of this type of packaging could receive severe burns by handling the material.

Hazards associated with the packages of pathogenic bacteria: community health problems -- worst case, pathogenic spores released as aerosol in confined spaces or into water/food supplies could result in a potential community health problem. Other potential problems associated with the bacteria include emotional distress concerning the release of the organisms.

Baltimore PD is checking with federal express, the shipper of the product. We should have something from them within the hour. The products should have arrived at the university yesterday. Products were shipped to Dr. Clovis Bowden, Professor of Chemistry, Columbia State University.

Please contact subjects at the University for follow-up. Advise this office of results.

Refer: Col. Lanham, major crimes bureau, police department, Baltimore, Maryland at ext 2504.

TUESDAY EVENING PLANNING SESSION FOR EOC

Total Time: Evening (no time limit)

Chief Controller Instructions

Chief Controller is present for security purposes and assigns adjuncts based on the following criteria:

- There must be a lead adjunct for each room selected by the chief controller.
- The lead adjunct must be an experienced facilitator.
- As much as possible, facilitators should be assigned to a room where their subject matter can be used most effectively (not just discipline on discipline).

Adjunct Controller Instructions

Adjunct Controller mentors the student room.

Reminder that student groups may be called: Operations and Coordination (for more rural or less experienced group) or EOC and Departmental Operating Center (for more experienced or urban group).

Lead adjunct controller will brief the students regarding what they need to accomplish and ensure that the students produce a word document and a PowerPoint presentation (see below).

Key point for this session is that this is part of the team building that is needed for functioning on Wednesday and Thursday.

Two missions for the students:

- How will our group respond to the policy statement developed by the policy group the previous night? Students should consider the directives given by the policy group and the actions they will take to address those directives.
- How will our groups work together and with the other rooms?
- The statement has to be in writing (word document) that will be reproduced for the remainder of the class and must be delivered in a PowerPoint presentation to the entire class Wednesday morning.

In addition, and separate from the word document and the PowerPoint presentation, the groups must discuss how they are going to communicate, what the message flow is like, and how they will coordinate and collaborate within their room and with the other rooms.

- How will our groups work together and with the other groups? For example, how will public works collaborate with public works and how will public works collaborate with other disciplines.

WEDNESDAY CRISWELL EXERCISE ORIENTATION

Total Time: 15 min.

Chief Controller Briefing Instructions

Consolidate the adjunct's feedback from the Exercise 1: Tanker Exercise and any issues identified in the student planning session presentation and present these to the class.

Send the adjuncts into the exercise rooms to lead a discussion of the Hot Wash.

Adjunct Controller Simulator Instructions

Remind students about the rules of engagement:

- Media broadcast at start and end of the exercise
- Cannot come in the control room (Can call the controllers.)

Note: debriefing is critical because it prepares students for Thursday Afternoon Exercise
Chief Controller

WEDNESDAY CRISWELL EXERCISE

Total Time: 2 hours

Chief Controller Instructions

Communications exercise used to test the equipment and the room. Used to allow the students to identify message flow and identify what documentation is necessary. Students become familiar with their role in the simulation.

Chief Controller could decide to tie Criswell Chemical to Tanker exercise if he or she wants to tie up resources. Alternatively, the two exercises should be separated if the performance is such that it would be desirable to start over.

Identify changes for Exercise 2 in terms of position assignments, phone directory, etc.

If students request information such as maps of city or county, ICS forms, etc., provide those before the start of the incident.

- It is important to be sure, periodically, that all of the controllers and students have the same COP and situational awareness.
- Manage the injects so that they come in waves. (This is important in this exercise.)
- Need to allow the students to have the time to do critical thinking.

Adjunct Controller Simulator Instructions

In-Brief students for Exercise 2: Criswell Chemical. Provide the exercise objectives to the students.

In separate rooms, reflect back on Lessons Learned from the previous exercise.

Focus on the “big picture” such as environmental impacts. Encourage focus on impacts that are not in the Criswell facility.

When providing injects, the students need to have enough time to do critical thinking.

Use the MSEL that follows. Acronyms used: F=Fire, P=Police, M=Media, PH=Public Health, EM=Emergency Management, EMS=Emergency Medical Services, CS=Community Services, G=Government, U=University

WEDNESDAY CRISWELL EXERCISE DEBRIEF

Total time: 80-110 min.

Chief Controller Instructions

Chief controller

Decide how to organize the structure for the debrief depending on the organization of the exercise.

Manage the time prior to the exercise in order to allow time for all groups to participate in the Hot Wash and the large group debrief.

Adjunct Controller Simulator Instructions

In groups, debrief/Hot Wash immediately after the exercise. (45 minutes)

- Adjunct conducts the Hot Wash using an easel pad in the Policy, Operations, and Coordination rooms.
- Organizational structure will be different for the debrief depending on the organization used during the exercise. (Debrief follows the exercise structure.)
- If reporting by discipline, the controller will stay with their discipline. If assigned to other groups, the controller works with their assigned group.
- Identify issues regarding how the students reached the end result of the exercise. Did your group accomplish the exercise objectives through the decisions that you made? What did your group do to achieve the objectives? How did you communicate internally and externally? What kinds of documentation did you develop and how effective was it?
- What changes do you think your group should make to be ready for tomorrow's exercise?
- Adjunct feeds back to the chief controller regarding student performance and operability of the equipment, etc. to incorporate in Thursday's Exercise

Each group should report out in the large group after the Hot Wash (40-70 minutes depending on the number of groups).

WEDNESDAY CRISWELL SUPPORT MATERIAL

Criswell Master Scenario Event List (MSEL)

#	Controller	Involved	Technology	Inject	Expected Action Supplemental Information for Controller
1	M	ALL	TV	Weather update: Continued unseasonably hot weather conditions with temperatures reaching near 90 degrees this afternoon. The temperature is currently 82 degrees with a slight breeze out of the N/NW at 8 mph. Presently Liberty County is under a severe thunderstorm warning until 4pm this afternoon, 85% chance of rain. Thunderstorms have been reported in the area.	NEWS BROADCAST VIA STUDIO
2	F,	F,P,PW, EMS	Phone Radio	<p>Officials at the Criswell Chemical Company report to Fire Dispatch: An explosion has occurred at the Criswell Chemical Company. A fire has been reported in the Acetone Storage Tank Farm at the plant. The tank may have been hit by lightning. Plant fire brigade personnel are attempting to access the situation. Need Central City Fire Department assistance. Location: N/6 Streets Central City</p> <p>Fire dispatcher will dispatch a first alarm assignment: Engine 4, Engine 3, Engine 5, Tower Ladder 3, Squad 1, ALS M 2, Battalion 2. Police Units CS 210, CC 212, CM 213, and SP 2 T.</p>	

3	M	P, EMS, PW	FAX	<p>Yesterday sixteen year old Jarmen Sites a student at McNamara High School in Central City died at Central City Hospital. Jarmen was taken to Central City hospital by his parents after complaining of feeling really bad after returning from school on Tuesday afternoon. A spokesperson for Central City Hospital reported that Jarmen had contracted bacterial meningitis and died late last evening.</p> <p>Jarmen was remembered by his parents as a wonderful son that was a great student and athlete who had lots of friends and a wonderful person to be around. He was the oldest of three children and his brother and sister looked up to him as a great role model.</p>	
---	---	---------------	-----	--	--

#	Controller	Involved	Technology	Inject	Expected Action Supplemental Information for Controller
4	PH	PIO	Phone FAX	<p>State Public Health Director sends fax with the following transmissible disease information:</p> <p>The germs that cause bacterial meningitis can be contagious. Some bacteria can spread through the exchange of respiratory and throat secretions. Fortunately, most of the bacteria that cause meningitis are not as contagious as diseases like the common cold or the flu. Also, the bacteria are not spread by casual contact or by simply breathing the air where a person with meningitis has been. Other meningitis-causing bacteria are not spread person-to-person, but can cause disease because the person has certain risk factors (such as a weak immune system or head trauma).</p> <p>Sometimes the bacteria that cause meningitis spread to other people. This usually happens when there is close or long contact with a sick person in the same household or daycare center, or if they had direct contact with a patient's oral secretions (such as a boyfriend or girlfriend). People who qualify as close contacts of a person with meningococcal or Haemophilus influenzae type b (Hib) meningitis are at higher risk of getting disease and may need antibiotics. Close contacts of a person with meningitis caused by other bacteria, such as Streptococcus pneumoniae, do not need antibiotics. Contact your local health department or tell your doctor if you think you have recently been in close and extended proximity to "Jarmen Sites."</p> <p>The PH director, as a precaution, also is scheduling</p>	<p><u>PIOs</u>: Should draft a press release emphasizing that only those people with close <u>and</u> extended proximity to Jarmen need to contact their physicians or the health department.</p> <p>Fax your draft press release back to PH for pre-approval before distributing to media.</p>

				testing with EMS personnel, McNamara High School students/staff, and in-hospital personnel that have been in close and extended proximity with Jarmen Sites.	
5	CS	F,EMS,P	Radio	Central City police unit reports a two-car traffic accident: 1 person trapped in vehicle -- the other car on fire! Need assistance! Location: X/20 th Streets in Central City.	
6	PW	PW,F,P	Radio	Central City water crew updates PW EOC Operations: Status of the water main break from yesterday. Roadway repairs have been made; all water restored at Z/9 th Streets.	
7	CS	F, EMS,P	Phone	Citizen calls EMS Dispatch: Neighbor has collapsed; need assistance at M/14 Streets in Central City. Elderly man, age 78, collapsed in yard was mowing grass now in cardiac arrest. CPR being performed.	
8	M	M,EMS	Phone	Media inquiry to PIO in EOC Operations: Concerning final number of injuries from the overturned tanker accident yesterday at I-107/SR5. Do you have this information?	
9	M	M,PIO	Phone	Media inquiry to PIO in EOC: Policy: Concerning final number of injuries from the overturned tanker accident yesterday at I-107 and State Route 5. Do you have this information?	PIOs in both Policy and Operations need to consolidate their information about this incident and reply by phone to the media.

#	Controller	Involved	Technology	Inject	Expected Action Supplemental Information for Controller
10	F	F,P,EMS, PW	Radio - FAX	<p>Engine 4 arrives at Criswell Chemical and assumes Unified Fire Commander position.</p> <p>Unified Fire Commander reports to EOC Fire Operations: Engine 4 requests a 2nd alarm. Lightning has struck tank 614 in the Acetone Storage Tank Farm (ASTF) at the Criswell Chemical Company. The lightning strike has caused an explosion in tank 614 and has ignited the contents of the tank. The explosion blew off the cone roof of the tank. The roof has flown almost 300 feet through the air in a southerly direction, striking an overhead pipe rack on the west side of the acetone storage tank farm 50 feet west of tank 624. The impact of the roof striking the overhead pipeline rack has dislodged and ruptured an 8-inch pipeline that is carrying Cumene (Check Placard 1918) into the facility from a river barge along the Roaring River. The ruptured pipeline is dangling loosely just aboveground, allowing Cumene to leak from the pipe at an estimated rate of 150 GPM.</p> <p>Initial damage assessment by plant employees indicates that no other product lines in the pipe rack appear to be leaking at this time. But, other pipelines that carry phenol and acetone show signs of physical damage from the impact. Plant employees have shut down the pipeline feed from the oil barge approximately 1/2 mile from the facility.</p> <p>Approximately 18,000 gallons of Cumene are in the</p>	<p>FAX Information EOC Police Operations EOC PW Operations</p>

				<p>pipeline. The Cumene flowing from the broken pipeline is running down the A Side, or west, side of the acetone storage tank farm area and flowing into the Swatera Creek on the south, side. Members of the Criswell Chemical Company fire brigade are attempting to slow down the flow into the creek but have not been successful. It is estimated that approximately 3,000 gallons of Cumene leaked from the pipeline before arrival of the Central City Fire Department. The product has a strong aromatic odor and the liquid has a bluish tinge.</p> <p>Cumene also has entered into the storm sewer on the west side. Members of the Criswell Chemical Company fire brigade have stopped the flow of Cumene temporarily from entering the storm sewer by placing some earthen material around the sewer inlet, but more precautions are necessary. Request diking materials to stop flow of material into creek and storm sewer.</p>	
11	F	F,P,PW, EMS	Radio	<p>Battalion Chief 2 arrives on scene and assumes role of Unified Fire Commander</p> <p>Report Unified Fire Commander to EOC Fire Operations:</p> <p>It is estimated that a significant amount of product entered the storm sewer. The storm sewer travels through the plant to the Swatera Creek which empties into the Roaring River.</p> <p>The tank fire is upwind approximately 300 feet from the ruptured pipeline. Tanks 615 and 616 are in close proximity to the tank fire. Refer to plant information sheet. Request wind direction and weather conditions.</p>	Unified Fire Commander requests EMS-Police-PW to send representatives to Incident Command Post to establish a Unified Command Structure.

#	Controller	Involved	Technology	Inject	Expected Action Supplemental Information for Controller
12	M	PIO	Phone	Phone call to PIO: Can you update media on fire at Criswell Chemical?	
13	M	M,PH,PIO	TV	<p>News broadcast: Via studio on pathogenic organism's situation in Central City. Live studio broadcast with chemistry professor from Columbia State U in Central City.</p> <p>1 box of Bacillus Anthracis missing. 1 box of Clostridium Botulinum missing. Boxes were delivered to and signed for at the CSU warehouse.</p> <p>Two boxes were found empty yesterday afternoon on campus at CSU.</p> <p>Professor (pick a controller) talks briefly about the products, possible threats, use of products, etc. (Come off in the middle of road, threat wise).</p>	
14	PH	P,PIO	Phone Fax	<p>PH reiterates information from Exercise 1: Both Bacillus Anthracis and Clostridium Botulinum are Category 1 Agents, which could cause serious illness or death. However, if the original shipping containers have not been breached, neither agent poses health risks. Bacillus Anthracis is shipped in spore form, while Clostridium Botulinum is shipped as a liquid. PH requests that if the containers are found they be advised in case there is need of antidotes or antibacterial medications.</p> <p>Dr. Richard Ricin of Columbia State University's</p>	<p>PIOs: Draft a press release using the above material. Add that anyone finding these missing containers should not touch them and should immediately call 911. Fax to media.</p> <p>Responders: Since the integrity of these two containers is unknown, if they are found, only those wearing Level A PPE should approach or handle them. PH has an</p>

				<p>biology department further advises that if the containers have been breached, then the Bacillus Anthracis, in particular, can be a respiratory hazard. Dr. Ricin formerly worked at LSU's National Center for Biomedical Research and Training.</p>	<p>EPA contact for further information on handling/storing/over packing/destroying these agents.</p> <p>Police: Contact the FBI's Liberty County Resident Agency to provide the above information. Suggest that they be the coordinating point with Homeland Security and other federal agencies if the FBI decides to be involved in this incident. Also, coordinate with Columbia State University PD.</p>
15	CS	F,P	Radio	<p>Citizen calls Fire Dispatch: Reports a leaking 55 gallon drum along the roadway. Someone might want to check it out. Location: SR 5 EB near Apple Valley.</p>	
16	F	F,P,EMS, PW	Radio Computer	<p>Report Unified Fire Commander to EOC Fire Operations: There has been a major explosion in the ASTF. Tank 614 is fully involved. Requesting 3rd alarm. The initial explosion has removed the cone roof of tank 614. Plant personnel report that the cone roof has traveled airborne, approximately 300 feet in a southerly direction, striking a product pipeline rack near the south end of the acetone storage tank farm. Cumene is reported to be leaking from the damaged pipeline.</p>	

#	Controller	Involved	Technology	Inject	Expected Action Supplemental Information for Controller
17	P	F,EMS PW	Radio	<p>CS 210 arrives on scene and assumes Unified Police Incident Commander position.</p> <p>Report Unified Police Commander to EOC Police Operations: Central City Police unit on-scene at Criswell Chemical Company. Fire is reporting a major explosion and fire on site. Standby for further direction. May be facing a major evacuation. Need transportation: PW buses, routing, streets, etc., or shelter in-place situation. Also need barricades and diking equipment from PW.</p>	
18	M	PH	Phone	<p>Media inquiry to Public Health Official In Policy: Regarding missing pathogenic materials. Is the community in any danger? What do the materials look like? Why does the university have these types of materials? ETC.</p>	
19	PH	PIO	Phone Fax	<p>Regarding the question about why the university has these materials: Relay the following information through a PIO who will call the media representative. The university's biology department has a contract with the US Department of Health and Human Services' Center for Disease Control and Prevention (CDC) to research more effective treatment modalities for these two agents. In particular, the biology department is working with the CDC's National Botulism Surveillance System to develop a more effective antitoxin.</p> <p>The University is also working to develop a truncated immunization schedule for Bacillus Anthracis. The</p>	After calling back the inquiring media representative, request a press release on the above information; distribute by fax to all media.

				current vaccination method involves <u>five</u> intramuscular injections given at day 0, week 4, months 6, 12, and 18. The University is attempting to develop a <u>two</u> injection system. As part of the contract award process, the University worked with local PH to develop protocols for storage, usage, etc. Contact the university's principle researcher, Dr. Richard Ricin, for further information.	
20	M	PIO	Phone	Media inquiry to PIO in Operations: Can you give us an update on what is happening at the Criswell Chemical Company? We have that there is some type of fire and chemical release. What information do you have?	
21	CS	PH	Phone	Parents call School Officials: Concerns sending their kids to school (Central City Jr. High) because of reported meningitis case.	
22	F	F,EMS,P, PW	Radio	Report Unified Fire Commander to EOC Fire Operations: There are two storage buildings outside the dike area. Approximately 20 feet from Tank 614. The wind appears to be out of the north. Requesting 4 th alarm.	Are PW equipment operators certified on SCBA?
23	F	F,EMS,P, PW	Radio	Report Unified Fire Commander to EOC Fire Operations: Tanks 615 and 616 are a severe exposure.	
24	M	PIO	Fax	Request PIOs develop a press release: Synopsising Criswell Chemical information and pathogenic organism's situation in Central City. Faxing it to media.	

#	Controller	Involved	Technology	Inject	Expected Action Supplemental Information for Controller
25	M	P	Phone	Media inquiry to Assistant Police Chief in coordination: Regarding missing pathogenic materials. Is the community in any danger? What do the materials look like? Why does the university have these types of materials? Etc.	
26	CS	PW,PH	Phone	School Official from Central City Jr. High school at AA/19th Streets reports: Raw sewage is coming in the bathroom adjacent to the school cafeteria. It really stinks. Public works finds a broken sewer line at the school. Location: AA/19 in Central City.	Broken line on school property; 24/48 hours to repair?
27	M	PIO	Phone	Media inquiry to PIO in EOC/Policy: Can you give us an update on what is happening at the Criswell Chemical Company? We have that there is some type of fire and chemical release. What information do you have?	
28	F	ALL	Radio	Report PW Supervisor has arrived at Unified Command Post and assumed the Unified PW Commander position: Unified PW Command to EOC PW Operations: Cumene is flowing into the creek from the broken pipeline on Side A. The leaking product has a strong aromatic odor with a bluish tint. Attempting to slow down the Cumene running into the creek by using dirt to dike the flow. A vapor cloud is forming and moving in a south/southeast direction towards the residential area southeast of the facility. Requesting additional PW resources to help slow down the leaking material	Do operators need to wear SCBA?

				from entering the creek. Need diking material ASAP.	
29	EMS	F,P,PW, EMS	Radio	<p>Report EMS Supervisor has arrived at Incident Command Post and assumed the EMS Unified Commander position:</p> <p>Unified EMS Commander to EOC EMS Operations:</p> <p>A vapor cloud is forming and moving in a south/southeast direction towards the residential area southeast of the facility.</p>	
30	PH	PH,PW,P	Phone	<p>PH sending an environmental health specialist to this high school to assess the situation:</p> <p>Coordinate with PW as needed.</p>	
31	F	F,P,PW, EMS	Radio	<p>Unified Fire Commander to EOC Fire Operations:</p> <p>A plant fire brigade report the broken pipeline is approximately 50 feet west of Tank 624-The pipeline is leaking Cumene at approximately 150 gpm. Product is flowing down side A towards the creek area on side D Plant employees have shut down the pipeline feed from the supply barges along the roaring river, which is approximately ½ mile from the Criswell Chemical Company. Cumene also has entered the storm sewer on side A.</p> <p>A vapor cloud has formed and is moving towards the residential area on the southeast side of the facility. Plant Fire Brigade members have been able to partially dike the area around the sewer, but a large amount of product has entered the storm sewer. Need more diking material ASAP.</p>	

#	Controller	Involved	Technology	Inject	Expected Action Supplemental Information for Controller
32	PW	F,P,EMS, PW	Radio	<p>Report Unified PW Commander to EOC PW Operations: Plant Fire brigade members have been able to partially dike the area around the sewer, but a large amount of product has entered the storm sewer. Need more diking material ASAP. PW private property issue, policy decision?</p> <p>A vapor cloud is forming and moving towards the residential area on the southeast side of the facility. Requesting additional resources from PW to assist in stopping the material from entering the sewer system and reduce the vapor release.</p>	
33	CS	F,P,EMS	Phone	<p>Citizen reports: Some type of smell coming from the Criswell Chemical Company around N/5 Streets. I think there has been a chemical release. I live south of the Criswell Chemical Company at O/12. Is my family in danger?</p>	
34	CS	ALL	Phone	<p>Citizen reports: Some type of smell coming from the Criswell Chemical Company around N/7 Streets. I think there has been a chemical release. I run an industrial warehouse south of the Criswell Chemical Company at N/10. Are my employees in danger? Call to police dispatch.</p>	

35	P	P,F	Radio	<p>Report Unified Police Commander to EOC Police Operations: The Fire/Arson/Bomb Investigator has been on-scene and his preliminary finding is that the explosion at Criswell was not due to a bomb. Investigation continues.</p>	
36	CS	EMS, F,P	Phone	<p>Citizen call to EMS Dispatch. I am having trouble breathing and need assistance at V/8. I think there is some type of chemical in the air from the chemical plant. I need help. What should I do to protect myself from contamination?</p>	
37	CS	F, P, EMS	Phone	<p>Citizen call to EMS Dispatch: I am having trouble breathing and need assistance at T/9. I think there is some type of chemical in the air from the chemical plant. I need help.</p>	

#	Controller	Involved	Technology	Inject	Expected Action Supplemental Information for Controller
38	P	ALL	Radio	<p>Report Unified Police Commander to EOC Police Operations: Central City Police units report an aromatic smell in the air south of the Criswell Chemical Company plant.</p>	<ol style="list-style-type: none"> 1. Perimeters need to be established around plant. Once actual perimeter locations are determined, City Police will work with the County Sheriff's Department and PW to set up and staff it. 2. PW assist with road closures. What roads need to be shut down? Use the following parameters to close roads: any roads immediately downwind of incident sites, any roads near spill areas, any roads that have had multiple automobile accidents, and any roads near the chemical release site. Make use of PD helicopters to gain better intelligence on ground traffic conditions. 3. What areas need to be evacuated? PD supports F and EM decisions, providing staffing as requested. Have shelters been opened? EOC role: this is predominately an EM, F, EMS, Red Cross matter

					<p>once the decision has been made to open shelters.</p> <p>4. PD may assist by ensuring that roads from evacuation sites to shelters are open.</p> <p>5. Do any residents need transportation to shelters?</p>
39	P	P,F,EMS	Radio	<p>Report Unified Police Commander to EOC Police Operations: Police advise all PD units at or near the Criswell incident to relocate so they are positioned away from prevailing winds/chemical smells. Police also request that Fire/HM provide them with guidance on PPE, need for citizen evacuation, and scene perimeter changes, if any.</p>	
40	G	G	Phone	<p>City Councilman Dan Gable calls Mayor: Regarding the missing pathogenic materials. Is the community in any danger? What do the materials look like? Why does the university have these types of materials?</p>	
41	CS	PH	Phone	<p>Concerned parents call Public Health about the safety of their children attending school: Is it safe to send my children to Central City Jr. High? What are you doing to keep this from spreading? What can I do to ensure my children don't get this? What are the symptoms I need to be aware of?</p>	
42	G	EMA	Phone	<p>State EMA Operations Officer calls EM Director: In policy, in regards to the missing pathogenic materials, can you give us an update?</p>	

#	Controller	Involved	Technology	Inject	Expected Action Supplemental Information for Controller
43	G	PH	Phone	State Health Officer calls Public Health Official in EOC: In regards to the missing pathogenic materials, can you give us an update?	
44	G	PH	Phone, Fax	State Health Officer call Public Health in EOC: Checking the availability of its antibiotic supply (for Bacillus Anthracis, healthcare providers will use antibiotics [such as ciprofloxacin and doxycycline], which are all commonly available in hospitals and pharmacies as well as in PH statewide stockpiles). In addition, for botulism, PH has alerted CDC's National Botulism Surveillance System that the specific antitoxin for this agent may be needed in the City. (CDC, the Alaska Division of Public Health, and the California Department of Health Services (CDHS) are the only sources of botulism antitoxin available in the United States; therefore, early contact with CDC is reasonable.)	
45	CS	PH,PIO	Phone	Citizen calls Public Health Official in EOC: Has a decision been made about whether to close the school immediately?	
46	F	F,P,PW, EMS	Radio	Report Unified Fire Commander to EOC Fire Operations: There is a strong aromatic odor in the area of T/9 Mobile Home Park #3. Residents are complaining that they are having some minor breathing problems. This area has many senior citizens. An evacuation has not started, but many people are beginning to leave the area. A bluish plume with an aromatic odor is also entering the neighborhood southeast of the	

				facility.	
47	CS	PW, P	Radio	Citizen reports: A dump truck has lost its load of gravel at the intersection of W/30 Streets in Central City. Blocking roadway. Need traffic assistance from police and need public works to remove the gravel.	
48	CS	F,P,EMS	Phone	Citizen calls Police and Fire Dispatch: Car on fire at I-107 and 20 th Streets. Two vehicles involved in accident with at least one injury. Need assistance.	
49	CS	P. EMS	Phone	Citizen calls Sheriff's dispatch: Vehicle off road at Route 19 and Jasper Pike. Driver appears to be dead. Need some assistance out at this location.	
50	EMS	F,P,PW, EMS	Radio	Report Unified EMS Unified Commander to EOC EMS Operations: ALS M2 is at 5/S Streets. There is a strong aromatic odor in this area. Residents are complaining that they are having some minor breathing problems. This area has many senior citizens. Treatment has not started, but many people are complaining of difficulty breathing. Assigned Medic Unit is establishing a medical group and casualty collection point (CCP) at 5/G Streets. Requesting one ALS ambulance strike Team.	

#	Controller	Involved	Technology	Inject	Expected Action Supplemental Information for Controller
51	F	F,EMS, PW,P	Radio	<p>Report Unified Fire Commander to EOC Fire Operations: The Criswell Chemical Company Product Control Center (PCC) has confirmed that the capacity of the broken pipeline is 18,000 gallons. The damaged pipeline rack also contained pipelines that were carrying phenol and acetone. Apparently these pipelines are not leaking, but they do show signs of physical damage from the impact of the roof. Criswell Chemical Company foam pumper carries 500 gallons of AFFF--all-purpose foam. An additional 1,200 gallons of AFFF--all-purpose foam is available in building 19. Criswell Chemical Company Plant Fire Brigade (PFB) has six members.</p>	<p>Tank on fire is reported to contain 500,000 gallons of acetone. Tanks 615 and 616 contain acetone.</p>
52	PW	PW,P,F, EMS	Radio	<p>Report Unified PW Commander to EOC PW Operations: The storm sewer system travels directly to the Swatera Creek from the Criswell Chemical Company. A large amount of Cumene has entered the storm sewer. The Swatera Creek empties into the Roaring River.</p>	<p>PW request assistance from FD...How do we deal with this? Collection or dilution?</p>

53	EMS	PW,P,F,EMS	Radio	<p>Report Unified EMS Commander to EOC EMS Operations: Many residents at T/9 are now complaining of difficulty breathing. Seven elderly people appear to be suffering some moderate effects of inhaling the vapor. Need more ambulances to transport these people to hospitals as a precautionary measure. Request a 2nd ALS ambulance strike team.</p> <p>Vapors seem to be getting heavier in this area. Suggest we establish some evacuation zones south and southeast of the facility. Need a holding area for evacuees until transportation can be provided. Need at least five buses and Breathing Air Support Unit. Can you send an OEM representative to assist with coordination of the evacuation and also an air monitoring team to determine the extent of the vapor release?</p>	Sunnyland Private School is located at V and 8 th Streets. This is nearby and should be checked.
54	P	EMS,P,F,PW	Radio	<p>Report Unified Police Commander to EOC Police Operations: Assistance is needed to complete any evacuation procedures. Need a holding area for evacuees until transportation can be provided. Need at least five buses and respirators. Faith Hospital is nearby at S & 14th Streets.</p>	Sunnyland Private School is located at V and 8 th Streets. Approximately 125 students are reported at the school.
55	CS	P,ALL	Phone	<p>Principal of the Sunnyland Private School call communications: We are located at V and 8th Streets. There is a strong smell in the air. Are we in any danger from this incident at Criswell Chemical Company? We have over 100 students in class!</p>	
56	CS	EMS	Phone	<p>Faith Hospital Facility Manager calls Public Works in Coordination group: We have heard there is an incident at the Criswell Chemical Company. Is the hospital in any danger? Has there been a chemical release?</p>	

#	Controller	Involved	Technology	Inject	Expected Action Supplemental Information for Controller
57	P	P, PH, PIO, EMS, F	Phone Fax	Report Unified Police Commander to EOC Police Operations: If a decision is made to evacuate, we will need available police to assist in evacuation. Ensure PPE is available.	<u>PH:</u> Once decision is made to evacuate, if shelter sites are not yet opened, press Red Cross to do so immediately. Also take lead on issue of hospital evacuations. <u>PIO:</u> Once decision is made to evacuate, draft press release for immediate release to media via fax.
58	M	M	Phone	Media inquiry to Information Officer in the field: Can you give us an update on conditions at Criswell Chemical Company? What exactly is going on?	
59	M	M	Phone	Media inquiry to PIO in Operations: We have heard there may be many injuries from the explosion at Criswell Chemical Company. What information do you have?	
60	EMS	F,P,EMS, PW	Radio	Report EMS Unified Commander to EOC EMS Operations: Notify the area hospitals that many of the patients they will be receiving are elderly with respiratory complaints. We will need oxygen delivery manifolds and several "H" oxygen cylinders to support. Have an additional EMS supervisor respond to coordinate and notify logistics. We will need an air unit with SCBA cache and additional ambulances.	
61	F	F,P,EMS,	Radio	Report Unified Fire Commander to EOC Fire	

		PW		Operations: We need to establish a foam attack on the fire tank. What is the ETA on foam delivery?	
62	F	F,P,EMS, PW	Radio	Report Unified Fire Commander to EOC Fire Operations: Exposure buildings contain 55-gallon drums of acetone. Approximately 100 drums on pallet storage.	
63	PH	PH,EMS	Phone	State Public Health contacts hospitals and EMS: To determine oxygen and related equipment needs.	PH serves as coordinator to arrange oxygen supplies, respirators, etc. from suppliers across the state.
64	M	M, EMA	Phone	Media inquiry to Coordination Group PIO: Has an evacuation order been given for areas around the Criswell Chemical Company? What areas are in danger?	
65	M	M,F	Phone	Media inquiry to Fire Chief in Policy: What chemicals are stored at Criswell Chemical Company, what exploded, what is on fire, etc.?	
66	CS	P,F	Phone	Citizen reports to dispatch: Three vehicles involved in an accident. One person is injured. Need assistance at Eastbound SR 5 and X Street.	
67	CS	P,F	Phone	Cellular phone reports from vehicle: 3-vehicle accident with injuries on Eastbound SR 5 and X Street. At least one injury. I am out of my vehicle checking out the situation.	

#	Controller	Involved	Technology	Inject	Expected Action Supplemental Information for Controller
68	CS	P,F	Phone	Same cellular phone operator reports: "Three injured and two serious." Then say something about "Uranium" and that you are moving your truck away from the area for own safety. (Location: Eastbound SR 5 and X Street.)	
69	F,P	F,P	Radio	First arriving units at Eastbound SR 5 and X Street report: Two passenger cars and a pickup truck with a camper shell on its side and two people injured on the ground. The pickup truck is placarded. Traffic backup.	
70	F,P	F,P, EMS,PW	Radio	First arriving units at Eastbound SR 5 and X Street add: Placard is for radioactive materials and there are containers out of the pickup. Request monitoring team and health department. 3-total injuries. (Truck contains medical isotopes for Central City Hospital, UN 2976 thorium 99/guide 64.)	Request 3 BLS ambulances for transport of injured. Request public health officials to respond. Request radiological monitoring team to respond.
71	M	EMS	Phone	Media calls to public health and hospital officials: Concerning radioactive materials on roadway at Eastbound SR 5 and X Street.	
72	M	F	Phone	Media call to police and fire officials: Is the radioactive material dangerous? How much of this stuff do we have on our highways? (Location: Eastbound SR 5 and X Street)	

73	PH	PH,PIO	Phone	<p>State Public Health Officer calls Public Health Official in EOC: Sending radiological monitoring team (two members) to scene. Regarding health risks: Don't know if there has been any breach to containers. However, if breached there could be health risks, both from inhalation and from skin exposure. PH is contacting CDC, EPA, and Radiation Emergency Assistance Center/Training Site (REAC/TS) for further information.</p>	<p>PIO: Once information is clarified about the type of radioactive material, actions being taken, and health risks, request a press release and fax this to the media.</p>
74	PW	PW,F,P,EMS	Radio	<p>Report Unified PW Commander to EOC PW Operations: Have not been successful in stopping the product from running into the creek. Need more sand or dirt for at least 200 cubic yards to stop the Cumene flow into the creek.</p> <p>Suggest a boom to prevent the product from traveling down the creek.</p>	<p>PW need to be certified with SCBA?</p>
75	F	F,P,PW,EMS	Radio	<p>Report Unified Fire Commander to EOC Fire Operations: The vapor cloud is still moving in a south/southeast direction. Have charged one of the dike monitors in an attempt to dissipate the vapor cloud.</p>	
76	PW	F,P,PW,EMS	Radio	<p>Report Unified PW Commander to EOC PW Operations: Have been able to slow the pipeline leak down somewhat, but it is still leaking product at about 75 gpm. Leak into the storm sewer system (side A) has been contained, but it is still getting explosive meter readings well above the upper exposure limit (UEL) in the storm sewer system within the facility. The storm sewer goes through the facility and then empties into the Swatera Creek. Swatera Creek empties into Roaring River.</p>	

#	Controller	Involved	Technology	Inject	Expected Action Supplemental Information for Controller
77	F	F,P,PW, EMS	Radio	Report Unified Fire Commander to EOC Fire Operations: Prepared to start a foam attack. There are approximately 1,200 gallons of foam now available for the Criswell Chemical Company foam pumper, along with the 500 gallons in the tank. But we will need more foam supplies. Have been able to slow the pipeline leak down somewhat, but it is still leaking product at about 75 gpm. Leak into the storm sewer system (side A) has been contained, but explosive meter readings are still well above the upper exposure limit (UEL) in the storm sewer system within the facility.	
78	P	F,P	Radio	Report Unified Police Commander to EOC Police Operations: Perimeters need to be established around plant. Roads need to be shut down. How many occupants need to be evacuated? Have shelters been opened? Do any residents need transportation to shelters?	
79	CS	G	Phone	Media and or citizen inquiry to Mayor: What is this National Incident Management System (NIMS) stuff we have heard? If the city does not adopt the ICS system, could they lose all federal funding? Is that true? Does Central City use NIMS?	
80	CS	G	Phone	Media and or citizen inquiry to EMA Official: What is this National Incident Management System (NIMS) stuff we have heard? If the city does not adopt the ICS system, could they lose all federal funding? Is that true? Does Central City use NIMS?	
81	CS	PW	Phone	Media and or citizen inquiry to Public Works	

				Official: What is this National Incident Management System (NIMS) stuff we have heard? If the city does not adopt the ICS system, could they lose all federal funding? Is that true? Does public works in Central City use ICS/NIMS? (OK)	
82	EMS	P,F,PW,EMS	Radio	Report Unified EMS commander to EOC EMS Operations: The number of elderly residents having breathing difficulties has increased. We now have 21 patients all requiring ALS intervention and transport. Need more ambulances of at least 3 type 1 ambulance strike teams. Need 200 respirators for occupants.	
83	EMS	F,P,PW,EMS	Radio	Report Unified EMS Commander to EOC EMS Operations: The vapor cloud appears to be extending further south into the residential area. U.S. Grant High School at T/14 th Streets. May need to be evacuated. 500 students are in the school.	
84	P	P, EMS, F, PW	Radio	Report Unified Police Commander to EOC Police Operations: Police field personnel report same information. The vapor cloud appears to be extending further south into the residential area. U.S. Grant High School at T/14 th Streets. May need to be evacuated. 500 students are in the school.	
85	CS	P,F	Phone	Citizen calls Police Dispatch: Need assistance in evacuating. I live at V/10 th Streets and do not have a car. What should I do?	
86	CS	P,F	Phone	Citizen calls Police Dispatch: My mother is in a wheel chair and we need assistance in evacuation. Is there a shelter open? T/ 9 th Streets in Central City.	

#	Controller	Involved	Technology	Inject	Expected Action Supplemental Information for Controller
87	CS	CS	Phone	Citizen inquiry to Red Cross: What shelters are open? Where is the closest shelter to T/15 th Streets?	
88	CS	EMA	Phone	Citizen inquiry to Emergency Management Official: What shelters are open? I need to evacuate. Where should I go? I live at U/10 th Streets.	
89	PH	PH,P, EMS	Phone	State Public Health Officer calls EOC Emergency Management: How can we best assist citizens that need to evacuate? Full list of open shelters needs to be communicated by PIOs to media post haste.	
90	PW	PW,F,P, EMS	Radio	Report Unified PW Commander to EOC PW Operations: The Criswell Chemical Company Product Control Center confirms that there were 18,000 gallons of Cumene in the pipeline at the time of the break. Additionally, plant personnel on the river barges report that there is product flowing into the river from the creek. We need to stop the material from entering the creek if possible. Suggest we are starting to apply foam to the material collecting on the ground around the leak. It may reduce the vapor cloud.	

91	PW	PW,F,P, EOC	Radio	Report Unified PW Commander to EOC PW Operations: Attempting to shut down pilot lights. If we shut down service in effected area, that would stop the flow of gas completely in the evacuated areas. Explosive meter readings in this area are well above the UEL. Need more resources to complete this assignment.	
92	M	M	Phone	Media inquiry to PIO in Policy: We have heard that the explosion at Criswell Chemical Company may have been caused by a bomb. Can you confirm?	
93	F	P,F,EMS, PW	Radio	Report Unified Fire Commander to EOC Fire Operations: The Criswell Chemical Company has only one portable submersible pump available at this time to remove water from the dike. Need more submersible pumps.	
94	EMS	P,F,PW, EMS	Radio	Report Unified EMS Commander to EOC EMS Operations: 150 people have been evacuated from the initial evacuation zone and taken to the holding area outside of the evacuation zone at 5/G Streets. Need three ambulances to staff the holding area zone for precautionary measures. Need buses to transport evacuees to a shelter.	
95	EMS	P,F,PW, EMS	Radio	Report Unified EMS Commander to EOC EMS Operations: Transporting 15 additional residents to the hospital for observation because they are experiencing breathing difficulties. Hospitals have been coordinated and notified via the transportation group.	Total transports: 36 Total evacuated: 150

#	Controller	Involved	Technology	Inject	Expected Action Supplemental Information for Controller
96	P	P	Fax	<p>Police and FBI Fax As a result of extensive interviews, the investigating teams (FBI, Police, University Police, etc.) have identified a suspect in the possible theft of the hazardous materials shipment. Subject apparently signed for the package at the University mailroom and has not been seen since.</p> <p>Russell Cook, white male 5'8", 250 lbs, blue glasses, beard, ¼" scar right cheek; last seen wearing black checked golf/polo shirt with collar, blue denim jeans, grey tennis shoes.</p> <p>Subject has criminal record in South Dakota: assault, disturbing peace, drug violations. FBI indicates has record as tax protester, possibly affiliated with Posse Comitatus anti-tax movement. Subject was student of Gordon Kahl many years ago. Subject has girlfriend in Central City area. Please relay broadcast to all agencies immediately.</p>	Police and FBI fax information to participants concerning possible suspect for missing boxes. See end of scenario for fax.
97	FBI	P,PH	Phone Press release	<p>FBI special agent to Police Chief in Policy: FBI will take lead in what appears to be a domestic terrorism investigation and other law enforcement agencies will assist. (City Police, for example, will find location of suspect's girlfriend's resident. FBI will follow up with surveillance.)</p>	PH: Will work with FBI to ensure that antitoxin and antibacterial medications are available, if needed.
98	M	M	Phone	<p>Media inquiry to Information Officer in field: Need update on Criswell Chemical Company incident, status, number of injuries, etc.</p>	
99	M	M	Phone	<p>Media inquiry to PIO in Operations Group: Need</p>	

				update on Criswell Chemical Company incident, status, number of injuries, etc.	
100	M	M	Phone	Media inquiry to PIO in coordination: Need update on Criswell Chemical Company incident, status, number of injuries, etc.	
101	M	M	Phone	Media inquiry to PIO in the Policy Group Need update on Criswell Chemical Company incident, status, number of injuries, etc.	
102	CS	P	Phone	Principal of the Eisenhower East Side at O and 37th Streets calls dispatch: A man has entered our school with a gun and has entered a classroom! The classroom is the first one to the right of the front door. I believe there may be a teacher and three students in the room. I think we need some help out here!	
103	CS	P	Phone	Principal of the Eisenhower East Side at O/37 Streets calls dispatch again: The man with the gun has shot a custodian. The custodian is wounded in the hallway. We need an ambulance. The man has taken a teacher and four students hostage in a classroom. Please send help!	
104	P	P,F,EMS	Radio	First arriving police units: At Eisenhower East Side at O/37 Streets reports: A man with a gun is holding one teacher and four 3 rd grade students in a classroom in the front section of the building. According to the principal, everyone else is out of the building. The gunman has shot a custodian. The custodian is injured inside the school. Request assistance.	

#	Controller	Involved	Technology	Inject	Expected Action Supplemental Information for Controller
105	P	P,F, EMS	Radio	First arriving police units at Eisenhower East Side at O/37 Streets: Establish Command Post across from the school. EMS is on the scene. Tactical personnel on-scene. Attempting to make contact with suspect in the school. Confirm one teacher and 4 students in classroom.	
106	CS	P,PIO	Radio	First arriving police units at Eisenhower East Side at O/37 Streets: Responding police will set up a perimeter. However, the first four responding officers will form up, enter the building, and attempt to eliminate the threat.	PDs now use an “immediate entry strategy” for active-shooter hostage situations. The method goes by a variety of names, such as “Immediate Action Rapid Deployment” and emphasizes quick and decisive action.
107	F	F,P,EMS, PW	Radio	Report Unified Fire Commander to EOC Fire Operations: Report fire reduced in the fire tank. Foam application is effective. Report a reduction of fire in the fire tank 614. Continuing foam application and cooling process.	
108	PW	F,P,EMS, PW	Radio	Report Unified PW Commander to EOC PW Operations: The product leaking from the broken pipeline has been reduced substantially. The flammability readings in the storm sewer still remain above the upper explosive limit (UEL) levels.	

109	PW	F,P,EMS, PW	Radio	Report Unified PW Commander to EOC PW Operations: PW has been successful in applying sand to dike the product flow into the creek. There is still the vapor cloud problem, but it seems to be reduced. There are a number of dead fish in the creek.	
110	P	F,P,EMS, PW	Radio	Report Unified Police Commander to EOC Police Operations: Report a significant reduction in the vapor cloud.	
111	F	F,P,EMS, PW	Radio	Report Unified Fire Commander to EOC Fire Operations: We have two firefighters suffering from heat exhaustion. One has chest pains.	
112	P	F,P,EMS, PW	Radio	Report Unified Police Commander to EOC Police Operations: Now have evacuated approximately 250 people. Transporting 13 additional patients with breathing problems to the medical branch. There are 3 young children, ages 10 months, 16 months, and 19 months, among the 13.	Total transports: 49 Total evacuations: 250
113	EMS	F,P,EMS, PW	Radio	Report Unified EOC Commander to EOC EMS Operations: Transporting 13 additional patients with breathing problems. There are 3 young children, ages 10 months, 16 months, and 19 months, among the 13. Do you have a specific hospital available for the children? Is there a pediatric referral center available for the children and can they handle all 3?	Total transports: 49 Total evacuations: 250

#	Controller	Involved	Technology	Inject	Expected Action Supplemental Information for Controller
114	EMS	F,P,EMS, PW	Radio Computer Visual	Report Unified EOC Commander to EOC EMS Operations: The pipeline leak has been stopped; no more product is coming from the break. No other pipelines in the pipeline rack appear to be leaking at this time, but two pipelines in the rack have suffered visible physical damage.	
115	PW	F,P,EMS, PW	Radio	Report Unified PW Commander to EOC PW Operations: Public Works has reported explosive readings in the storm sewer system within the plant are below the lower exposure limit (LEL).	
116	P	F,P,EMS, PW	Radio	Report Unified Police Commander to EOC Police Operations: Vapors entering the residential area are almost minimal at this time. Not getting any flammable readings on our explosive meters. Breathing without respirators is possible. Have now evacuated 300 people. Should we stop the evacuation procedures?	
117	F	F,P,EMS, PW	Radio Computer Visual	Report Unified Fire Commander to EOC Fire Operations: Report fire in tank has been greatly reduced.	
118	F	F,P,EMS, PW	Radio Computer visual	Report Unified Fire Commander to EOC Fire Operations: Report incident is now under control.	

Message Regarding Shipment of Pathogenic Organisms

TO: CENTRAL CITY POLICE DEPARTMENT
ALL OTHER AREA LAW ENFORCEMENT AGENCIES
FROM: BALTIMORE CITY POLICE DEPARTMENT
COL. RICHARD LANHAM
DATE: Sept 28, 2012
TIME: 1530 HRS
SUBJ: Possible Suspect Re: Hi-Jack of a Shipment of Class III (Highly Pathogenic Organisms)

As a result of extensive interviews, the investigating teams (FBI, Police, University Police, etc.) have identified a suspect in the possible theft of the hazardous materials shipment. Subject apparently signed for the package at the University mailroom and has not been seen since. Michael Chevalier Chamberlin, male, white, 5'-8", 250 lbs, blue glasses, beard, ¼" scar right cheek; last wearing black checked golf/polo shirt with collar, blue denim jeans, grey tennis shoes.

Subject has criminal record in South Dakota: assault, disturbing peace, drug violations. FBI indicates has record as tax protester, possibly affiliated with Posse Comitatus anti-tax movement. Was student of Gordon Kahl many years ago.

Subject has girlfriend in Central City area. Please relay broadcast to all agencies immediately. REFER: Col. Lanham, Major Crimes Bureau, Police Department, Baltimore, Maryland at ext 2504.

NCIC MSG RELAY FROM DRI/MD0190100

**TO: CENTRAL CITY POLICE DEPARTMENT
ALL OTHER AREA LAW ENFORCEMENT AGENCIES**
**FROM: BALTIMORE CITY POLICE DEPARTMENT
COL. RICHARD LANHAM**
DATE: Sept 28, 2012
TIME: 1530 HRS
**SUBJ: POSSIBLE HI-JACK OF A SHIPMENT OF CLASS III (HIGHLY
PATHOGENIC ORGANISMS) ON-ROUTE TO CENTRAL CITY**

We have just been notified by the US Type Culture Collection Company of Baltimore, Maryland that a shipment of Bacillus Anthracis and Clostridium Botulinum to a Dr. Clovis Bowden at the Columbia State University of Central City is missing.

We have put out an all-points bulletin concerning the size of the container, the labeling, and the pathogenic nature of the contents. Two packages were shipped federal express and each contained a different material. The manufacturer has stressed that anyone not trained in the recognition of this type of packaging could receive severe burns through handling the material.

Hazards Associated with the Packages of Pathogenic Bacteria: Community Health Problems -- worst case, pathogenic spores released as aerosol in confined spaces or into water/food supplies could result in a potential community health problem. Other potential problems associated with the bacteria include emotional distress concerning the release of the organisms.

Baltimore PD is checking with Federal Express, the shipper of the product. We should have something from them within the hour. The products should have arrived at the University yesterday. Products were shipped to Dr. Clovis Bowden, Professor of Chemistry, Columbia State University.

Please contact subjects at the University for follow-up. Advise this office of results.

REFER: Col. Lanham, Major Crimes Bureau, Police Department, Baltimore, Maryland at ext. 2504.

Central City Fire Department
Criswell Chemical – Handout # 1

Procedure: Operating Procedure 19

Purpose: Incident Command System (ICS) Organization Structure--Site-Specific

Location: Criswell Chemical Company Acetone Storage Tank Farm at 5th/7th to N/P Sts.

1. A community risk assessment (RA) process was conducted by the Central City Fire Department at the Criswell Chemical Company to determine the community risk potential if an emergency did occur at the facility. The assessment identified that a high risk did exist for an emergency incident to occur at the Criswell Chemical Company-Acetone Storage Tank Farm. Furthermore, the assessment indicated such an emergency at the Criswell Chemical Company- Acetone Storage Tank Farm would trigger a series of events that would have a negative effect on the surrounding community and present command and control problems.
 - a. Based on the assessment, predetermined Unified ICS positions/functions have been assigned to Fire-Police-EMS-PW agencies for unified command and control purposes when an emergency does occur at the Criswell Chemical Company.

Response Procedure

1. Incident Command Post (CP) and Staging Area sites will be determined by the Unified Fire Commander. Locations shall be transmitted to Fire Dispatch.
2. Upon transmission of the second alarm and arrival of the deputy chief at the Criswell Chemical Company, the first-due battalion chief will assume the role as Operations Section Chief, and the deputy chief will become the Unified Fire Command for the incident. All other unified response agencies (Police-EMS-PA) in Central City will deploy a command officer to assume the role as a Unified Commander for their agency.
3. A Unified Command shall be established for command and control purposes:
 - a. Fire Responsible for all firefighting divisions and groups.
 - b. Police: Responsible for community evacuation procedures and controlling perimeter operations.
 - c. EOC: Responsible for all medical concerns and will establish triage, treatment, and transportation.
 - d. PW: Responsible for containing product spills, storm sewer issues, and waterway impacts.
- 4.. Unified Commanders shall request resources through their respective EOC Operations.

5. Pursuant to the Criswell Chemical Company-Disaster Operations Plan, Central City Fire Department has responsibility for direction and control of all evacuation procedures during an emergency incident at the Criswell Chemical Company.
6. Due to the potential for large-scale evacuations in the surrounding community during an emergency incident at the Criswell Chemical Company- Acetone Storage Tank Farm, upon transmission of the second alarm at the Criswell Chemical Company, the Liberty County/Central City Emergency Operations Center (EOC) will be activated and staffed with limited representatives.
7. Full activation of the EOC may be necessary if the emergency increases in intensity. The decision to implement a full activation of the EOC will be determined by the IC and/or the Emergency Management Director.

Criswell Chemical – Handout # 2

Criswell Chemical Company

Located Between 5th and 7th Streets and "N" and "P" Streets

Fact Sheet

Criswell Chemical Company is located in a moderately populated neighborhood in the northwest section of Central City. Residential properties surround the facility on the west and south sides. SR-5 is located on the north side, and a park area and the Roaring River are on the east side.

The Swatera Creek runs through the plant from a westerly direction, bending southward and emptying into the Roaring River. The Swatera Creek is partially underground as it passes through the facility.

The company primarily produces products used in the manufacturing of plastics. Cumene, a hydrocarbon derivative, is used to produce these products, mostly acetone and phenol.

Cumene is brought into the facility via an 8-inch incoming pipeline elevated 12 feet aboveground. It is piped from barges along the Roaring River. An 8-inch outgoing pipeline runs alongside this incoming line and carries outgoing refined phenol to the same river barges. Only Cumene and phenol are transferred through this in-and-out pipeline method.

The pipeline begins at the confluence of the Swatera Creek and the Roaring River, which is approximately $\frac{1}{2}$ mile from the facility and travels along the Swatera Creek into the facility. All incoming product is stored in cone-roof storage tanks.

All products produced in the facility are also stored in cone-roof storage tanks in the facility until transferred to the outgoing pipeline system or to railcars and tank trucks. All product movement throughout the facility is by the 8-inch overhead pipeline rack system 12 feet aboveground.

Criswell Chemical Company operates 24 hours a day. Normally 50 employees are on duty daily. The facility has a trained fire brigade and one foam pumper. (See resource sheet for details on firefighting capacity.)

Acetone Storage Tank Farm

- 16 cone-roof storage tanks, 2 horizontal tanks
- Dimensions of tank farm: A side--360', B-side--90', C side--360', D side--210'

Tank #	Contents	Height	Diameter	Capacity (gallons)
614	Acetone	40'	50'	543,000
615	Acetone	40'	25'	255,000
616	Acetone	40'	25'	255,000
617	Phenol	40'	25'	255,000
618	Phenol	40'	25'	255,000
619	Phenol	40'	25'	230,000
620	Cumene	40'	25'	230,000
621	Caustic blend	30'	20'	65,000
622	Residue	30'	20'	65,000
623	O.O.S.	Horizontal	-	-
624	O.O.S.	Horizontal	-	-
625	Phenol water	38'	10'	25,000
626	Phenol water	36'	12'	30,000
627	Residue	36'	12'	30,000
628	Dismantled	-	-	-
629	Acetone	40'	30'	300,000
630	Acetone	40'	30'	300,000
631	O.O.S.	25'	12'	-
632	Cumene	40'	50'	543,000

Facility Firefighting Capability Assessment

- Facility has a trained fire brigade.
- Facility has four fire pumps capable of delivering 10,700 gpm:
 - 2,000 gpm--Electric: takes suction from 660,000-gallon storage tank.
 - 2,000 gpm--Steamer: feeds from a 12-inch Central City main.
 - 3,200 gpm--Diesel: feeds from a 20-inch Central City main.
 - 3,500 gpm--Diesel: takes suction from 440,000-gallon storage tank.
- Ten hydrants are available within the facility.
- Central City hydrants are available 400 feet apart outside the facility.
- There are two entrances to the facility: east and west on Main Street.

Facility Resource Capability

- Facility has a 1,000-gpm-foam pumper with 500-gallon tank universal foam.
- Total foam capacity at facility: 1,700 gallons universal foam.
- All cone-roof storage tanks have one foam chamber.
- Acetone Storage Tank Farm has three 50-foot mounted water cannons. Sides A, C, and D need to be pressurized.

Facility Containment Dike System

- Dikes are required to be capable of containing the total amount of product from the largest tank in the dike area plus 10 percent more. To comply with this standard, some dikes are interconnected by creating an opening in the dike walls to allow product to flow from one dike to another to meet National Fire Protection Association (NFPA) standards for dike capacity.
- Dikes are 4-foot concrete walls.
- Dike drains are normally kept closed. If opened, they are capable of removing only 90 gpm of runoff water. Pump drains pump dike water into holding tanks until it can be processed. Runoff water from firefighting should be removed from dikes to prevent unnecessary water buildup in dike area.

THURSDAY TRAIN DERAILMENT EXERCISE ORIENTATION

Chief Controller Instructions

(15 min.)

Remind students that they will exercise through lunch and that sack lunch will be provided.

Remind students of Lessons Learned from the Criswell Chemical Exercise and answer any student questions.

Remind students about the rules of engagement:

- Media broadcast at start and end of the exercise
- Cannot come in the control room (Can call the controllers)

THURSDAY TRAIN DERAILMENT EXERCISE

Chief Controller Instructions

Identify changes for Exercise 3 in terms of position assignments, phone directory, etc.

What happened in yesterday's exercise is independent—could tie prior exercises to the Train Derailment if students want to tie up resources or was the performance such that they want to start over? If students request information such as maps of city or county, ICS forms, etc. provide those before the start of the incident.

- It is important to be sure, periodically, that all of the controllers and students have the same COP and situational awareness.
- Managing injects so that they come in waves is important in this exercise.
- Need to allow the students to have the time to do critical thinking.

Adjunct Controller Simulator Instructions

(minimum of three hours)

In-Brief students for Exercise 3 Train Derailment. Provide the exercise objectives to the students.

In separate rooms, reflect back on Lessons Learned from the previous exercise.

When providing injects, need to allow the students to have the time to do critical thinking.

Use the MSEL that follows. Acronyms used: F=Fire, P=Police, M=Media, PH=Public Health, EM=Emergency Management, EMS=Emergency Medical Services, CS=Community Services, G=Government, U=University, PW= Public Works.

THURSDAY TRAIN DERAILMENT EXERCISE DEBRIEF

(80-110 minutes)

Chief Controller Instructions

Decide how to organize the structure for the debrief depending on the organization of the exercise.

Manage the time prior to the exercise in order to allow time for all groups to participate in the Hot Wash and the large group debrief.

Adjunct Controller Simulator Instructions

In groups debrief/Hot Wash immediately after the exercise. (45 minutes)

- Adjunct conducts the Hot Wash using an easel pad in the Policy, Operations and Coordination rooms.
- Organizational structure will be different for the debrief depending on the organization used during the exercise. (Debrief follows the exercise structure.)
- If reporting by discipline, the controller will stay with their discipline. If assigned to other groups, the controller works with their assigned group.
- What major common issues did your group experience or identify as a result of this exercise? Why are they an issue?
- What individual organizational changes do you think need to be made back home so that your agency/organization will be more effective during a disaster? Which ones can be implemented quickly and at low cost?

Each group should report out in the large group after the Hot Wash (40-70 minutes depending on the number of groups).

THURSDAY TRAIN EXERCISE SUPPORT MATERIAL

Train Master Scenario Event List (MSEL)

#	Controller	Involved	Technology	Inject	Expected Action Supplemental Information for Controller
1	M	ALL		<p>NEWSBREAK: Yesterday an explosion at the Criswell Chemical Company caused a lot of excitement when lightning hit a storage tank igniting its contents. Firefighters battled the blaze for hours. The explosion resulted in the evacuation of several hundred people living in the area. Forty nine people were treated at area hospitals as a result of the explosion.</p> <p>Public works crews are working on a broken sewer line by Central City Jr. High school at AA and 19th. The break was noticed yesterday when a cafeteria employee at the school reported sewage coming up in a bathroom near the cafeteria. The principal did not believe the smell of sewer warranted releasing school early. A public work spokesperson says they hope to have the break repaired by this evening. The public health department will conduct a study following the repair.</p>	

				WEATHER UPDATE: NWS has issued a flash flood watch for the valley areas of the Mineral Mountains and areas adjacent to the Roaring River in the county. Rain will continue throughout the day and could be heavy at times! Winds are out of the S/SW at 5-8 mph! Temperature is 72°.	
2	PW,P	PW,P,F	Radio	Water crew on scene at L and 13th Streets report at large break: Need a supervisor. Police are currently on the scene for traffic assistance!	Shut down for a while -- involve gas, sewer, electric and streets!
3	CS	PW, P	Phone	Citizen calls Public Works: Citizens report signals not functioning at Z and 20 th Streets! Traffic backup!	Request police for directing traffic.
4	P	P	Radio	Central City Police units report: Traffic slowed by rainfall at the following locations: X and 30 th Streets, Central City Z and 15 th Streets, Central City Route 5 and DD Streets, Central City	Police could send up a Bell Jet Ranger, weather permitting, to determine best alternate travel routes.
5	P	P	Radio	Sheriff's Unit reports: Traffic slowed by rainfall at SR-5 near Gold Mine.	
6	P	P	Radio	Sheriff's Unit reports: Traffic slowed by rainfall at SR-5 near Apple Valley.	
7	CS	PW	Phone	Citizen calls Public Works Dispatch: Have sewer backup in my home. Need assistance at J and 8 th .	

#	Controller	Involved	Technology	Inject	Expected Action Supplemental Information for Controller
8	PH	PH	Radio	Public Health: Sending an Epidemiology Response Team (Epidemiologist [team leader], registered nurse, environmental health specialist, and a clerk) to conduct sewer study.	
9	CS	EMS	Phone	Citizen calls EMS Dispatcher: My husband has the car and my daughter is extremely sick. I need to get her to the emergency room. She's vomiting a lot, has bad cramps, and can't keep anything down. Location: J and 6 th in Central City.	
10	CS	PW	Phone	Citizen calls Public Works Dispatch: Have water in underpass at DD and the Railroad. Several feet of water. Drains may be clogged.	
11	P	P	Radio	State Police Unit reports: Traffic slowed by rainfall at the following location: I-107 and State Route 5.	
12	P	P	Radio	State Police Unit reports: Traffic slowed by LL at the following Location: SR-19 and I-102.	

13	CS	F	Phone	Wife calls Fire Operations: Please tell my husband that I had to call an ambulance to take our daughter to the hospital. She's violently ill. I think he is in something called "staging" somewhere.	
14	CS	P,F, EMS	Phone	Citizen calls Police Dispatch: Citizens report a major vehicle accident on I-102 at SR-19. Two vans on fire. Need fire department. May have some injuries!	
15	M	PH	Phone	Media calls Public Health: What's been done to prevent additional cases of meningitis? Our website here at WEMI has received a lot of inquiries about how to prevent getting meningitis. What should we tell them? Are the schools safe? Same call to Planning Section.	

#	Controller	Involved	Technology	Inject	Expected Action Supplemental Information for Controller
16	PH	PH PIO	Press Conference	<p>Recap of medical content from yesterday's exercise:</p> <p>"The germs that cause bacterial meningitis can be contagious. Some bacteria can spread through the exchange of respiratory and throat secretions. Fortunately, most of the bacteria that cause meningitis are not as contagious as diseases like the common cold or the flu. Also, the bacteria are not spread by casual contact or by simply breathing the air where a person with meningitis has been. Other meningitis-causing bacteria are not spread person-to-person, but they can cause disease because the person has certain risk factors (such as a weak immune system or head trauma).</p> <p>"Sometimes the bacteria that cause meningitis spreads to other people. This usually happens when there is close or long contact with a sick person in the same household or school, or if they had direct contact with a patient's oral secretions (such as a boyfriend or girlfriend). People who qualify as close contacts of a person with meningococcal or Haemophilus influenzae type b (Hib) meningitis are at higher risk of getting disease and may need antibiotics. Contact your local health department or tell your doctor if you think you</p>	<p>Note: PIOs can use Emergency Alert System (EAS) at any time they deem necessary to get information directly to the public.</p> <p>PIOs will work with the local health director (a physician) to present a press conference covering the answers to the meningitis questions</p> <p><u>Background information:</u> Epi Info™ is used worldwide for the rapid assessment of disease outbreaks; for the development of small to mid-sized disease surveillance systems; and as ad hoc components integrated with other large scale or enterprise-wide public health information systems. One specific advantage for users, such as Central City, is that CDC's highly-trained and experienced Epidemic Intelligence Service (EIS) members are available 24/7 for consultation.</p>

				<p>have recently been in close and extended proximity to Jarmen Sites.”</p> <p>The PH director, as a precaution, also is scheduling testing with EMS personnel, McNamara High School students/staff, and in-hospital personnel that have been in close and extended proximity with Jarmen Sites. Although there are field tests to determine the presence of this bacterium, the most reliable tests are done by collecting patients’ blood or cerebrospinal fluid. Both are done in laboratory or hospital locations, not in the field. In addition to the above, the PH Department Operations Center (DOC) has been activated. Further, the Epi Info™ system is being used to forward outbreak details to the CDC.</p> <p><u>New Content:</u> So far no additional cases of meningitis have been discovered. PH is continuing to conduct contact tracing and arranging for ambulatory, non-symptomatic patients to have blood samples drawn. (Symptomatic patients in hospitals are already having blood drawn.)</p>	
17	CS	P	Phone	<p>Citizen calls Police Dispatch: Citizen reports man with a gun at the ball park tavern at A/3rd streets in blue water -- call to sheriff's dispatch. Customer is waving gun around! Help!</p>	
18	CS	PW,P	Phone	<p>Citizen calls Public Works: Citizens report manhole covers coming off due to streets flooding (surface water) on W Street between 10th and 15th Streets in Central City!</p>	

#	Controller	Involved	Technology	Inject	Expected Action Supplemental Information for Controller
19	F,P	P,F, EMS	Radio	<p>First arriving units at I-102 and SR-19 van accident report: Numerous burn victims in vehicles. Two vans on fire; need additional EMS! Victims need transport. Have five injuries now.</p> <p>First Arriving Engine Company to EOC Fire Operations: First county fire resources arriving at I-102 and SR-19 van accident report numerous burn victims. Two vans on fire. Request 3 ambulances. Have five injuries now. Victims need to be transported to Central City Hospital Trauma-Burn Center.</p>	Request 2ALS and 1BLS ambulance
20	CS	CS, PH	Phone	<p>School Official from McNamara School calls Public Health. I have received several phone calls from parents that are concerned about sending their kids to school because of the reported case of meningitis by the media. Can you do something to put this to rest? There's only a couple days of school left.</p>	
21	PH	PH	Phone	<p>Public Health: Sending a public health educator to the school to make a presentation at a school assembly to students and staff. The public health educator will also distribute a fact sheet for students to take home to parents.</p>	<p><u>PH:</u> Write a one-page Q and A fact sheet: use CDC website (CDC.gov) to obtain content. Fact sheet will include contact numbers and URLs for local and state health departments.</p>

					Optional build: PH has a Health Alert Network (HAN) that can be used to distribute information throughout the State and even nationally. The State of Columbia system also includes direct links to media so that emergency health information can be disseminated swiftly. PH and PIOs should consider using HAN as needed.
22	CS	CS, PH	Radio	Sewer crew at Central City Jr. High at AA and 19th Streets notifies Public Works: Fixing the sewer break at the school is problematic and might take additional time to repair.	
23	PH	PH PIO	Radio	Public Health activates its Medical Reserve Corps which is composed of trained, volunteer medical professionals and para-professionals. The unit can be integrated with PH epidemiology response teams to conduct contact tracing, interviews at outbreaks, and assist the Red Cross at shelters, etc.	<u>PIO:</u> Draft a radio announcement requesting that MRC volunteers report in to local health department offices for deployment. Bring "three-day kit," member IDs, medical licenses. Option: Can use HAN system to alert MRC members (see new inject#9 for more information about HAN).
24	CS,	EMS PH	Phone	School Nurse at Central City Jr. High school calls Public Health and EMS: I don't know what's going on, but I have a lot of sick kids here. Right now I have a stream of kids coming in that are violently ill. I'm trying to notify their parents but can't reach all of them. I think they need to be seen by a doctor. Can you get some ambulances here to take some of them to the emergency room? Right now I have 15 kids that are really sick.	Number of sick kids at school goes to 28.

#	Controller	Involved	Technology	Inject	Expected Action Supplemental Information for Controller
25	CS	PW,G	Phone	Criswell Chemical Company Manager calls Public Works: Concerning loss of water at facility: when will it be restored? L and 12 th Streets. (See incident #2 -- play up real big -- help them believe we are going to do something to the plant.)	Water pressure will be low for 8 hours.
26	CS	PH	Phone	School Principal at Central City Jr. High calls Public Health: We might have a problem here. 50 children have not shown up for school that called in sick, 12 that didn't show up and we don't know why, a bunch of students are throwing up all over here at school. Can you tell me if this is happening anywhere else? Any ideas what this is? They are fixing a broken sewer line outside. Can that be the cause? Can you have someone investigate and find out what we're dealing with?	PH sends an epidemiologist to the hospital receiving Central City Jr. High School students/patients. Epi will work with hospital's infection control and communicable disease staffers.
27	P	P,EMS	Phone	Update on missing pathogenic organisms at CSU: Central City Police Department has arrested suspect: The person who received the Federal Express packages.	Consider isolation/quarantine?
28	P	P,PH	Radio	Police request Public Health assistance. Although the suspect has been captured, the arresting officers have not found the FedEx containers with the pathogens. Can PH	<u>Note limitations:</u> These PH responders, while using fully-encapsulated PAPRs or SCBA, etc. for Level A PPE, only have Photoionization Detectors [PIDs] and

				<p>respond with sampling equipment to determine if there is any evidence of the pathogens having been in the location of the arrest?</p> <p>Due to the above sampling limitations, police are also contacting FBI to send its Hazardous Materials Response Unit (HMRU) to the same location. (HMRU is based at Quantico, VA; so has some travel time – several hours minimum before available to assist.) Police are also requesting that the FBI's Resident Agency send an Evidence Response Team (ERT) from the closest field office.</p>	<p>Immunoassay Tests (which are hand-held assays, sometimes referred to as "smart tickets") as equipment. These are intended only for screening environmental samples. Due to their low and questionable sensitivity, they cannot be relied on for a determination that anthrax or other pathogens are or are not present. However, PH does have Polymerase Chain Reaction (PCR) capabilities through its State lab. PCR is a technique that amplifies DNA and compares sequences to known test probe standards for Bacillus Anthracis and Clostridium Botulinum. PCR can be used in the field or in the laboratory. In either case, the samples must be cultured to confirm that the bacterium is a specific agent and that it is viable. Field PCR systems are very selective but do not work well with heterogeneous environmental samples. The probes are very expensive. PCR has been shown to work best as a final confirmation of positive samples taken from plated colonies. As a result, PH is gathering samples for PCR testing.</p>
29	CS	ALL	Phone	<p>Citizen calls Police Dispatch: Citizens report a train derailment in Central City: Loud noise around the railroad tracks. Someone should check it out! (Controller Note: Citizen calls should include several addresses – D and 24th Sts.; D and 26th Sts.; C and 24th Sts.; C and 26th Sts. Etc.)</p>	

#	Controller	Involved	Technology	Inject	Expected Action Supplemental Information for Controller
30	ALL	ALL		<p>Controller Note: Derailment Narrative. First train: freight #113 two locomotives, 60 cars Second train: passenger with students from CSU on board. First train (freight) travelling east into Central City on the center track brakes and hits person on tracks. The train breaks apart between the 9th and 10th cars. The two locomotives and cars 1-6 remain on the center track. Cars 7-9 are thrown south onto another track. Cars 10-60 are partially derailed. The second train hits cars 7-9 of the first train on the south track and derails.</p>	
31	M	ALL	TV	<p>News Bulletin # 2 We interrupt our regular programming for the following announcement -- WEMI has just received a report that a train has derailed in Central City around D and 24th streets. At this time we have no further information on the derailment. We will keep you posted on this new development!</p>	
32	PW	PW,P	Phone	<p>Citizen calls Public Works Dispatch: Public Works Crews, citizen's report underpasses in the city are accumulating water -- drains are clogged. 1-2 feet of water! Location: Route 5 and XX Streets.</p>	

33	PW	PW,P	Phone	Citizen calls Public Works Dispatch: Public Works Crews, citizen's reports underpasses in the city are accumulating water -- drains are clogged. 1-2 feet of water! Location: Route 5 and DD Streets!	
34	P	ALL	Radio	Central City Police Units report: Traffic gridlocks at the above mentioned locations due to underpass flooding! Locations: State Route 5 at XX and DD streets.	
35	P	ALL	Phone	Citizen calls Public Works Dispatch: Safeway Store Manager at E and 26 th Streets reports that a passenger train has derailed. I can see people injured! Help!	
36	CS	F,EMS	Phone	Citizen calls Police Dispatch: Worker at the Lighthouse Chevron Station reports a huge derailment 2 blocks north of his gas station. A lot of people are hurt.	
37	PH	PH, P,U		Public Heath Reports: Sampling continues at site of earlier arrest of suspect who allegedly stole the pathogens. Police units on-scene have still been unable to locate the actual FedEx packages. Sending collected sample back to State Lab for processing.	
38	CS	ALL	Phone	Central City Times at P and 19th Streets calls EMS dispatch: Worker's arm is caught in bailer machine; need help quick!	

#	Controller	Involved	Technology	Inject	Expected Action Supplemental Information for Controller
39	P	ALL	Radio	<p>First arriving Central City Police Unit at train derailment assumes Unified Police Commander position reports: A passenger train has derailed just south of 24th Street between D and E Streets. Need additional units and EMS. Also heavy rescue from the fire department!</p> <p>Report Unified Police Commander to EOC Police Operations: We are on location at D and 24th Streets. We have a major train derailment between D and E Streets at this location. Six passenger cars travelling eastbound have derailed on the South Bound track. Five passenger cars are lying on their side in a 4 foot drainage ditch on the southbound track. An unknown number of passengers are reported to be trapped.</p>	
40	P	ALL	Radio	<p>Report Unified Police Commander to EOC Police Operations: Has requested that Bell Jet Ranger go up again to assist with determining the extent of damage area.</p>	
41	F	ALL	Radio	<p>Response units at van fire at I-102 and SR-19 report fire is out: Report 5 total burn victims. Vans caught fire when a propane tank in the back of the first van exploded on impact from the accident! Will need cleanup crew!</p>	Request cleanup crew!

42	CS	PW,F	Phone	Citizen calls Public Works Dispatch: Principal Collins E.S. at CC and 30 th Streets reports no water pressure in the building. Notifies water officials.	
43	CS	CS	Phone	Citizen calls Logistics Section: I just moved into town from Nashville, TN (was a shelter manager there) and would like to become a volunteer in Central City.	
44	M	PIO	Phone	Phone call to EOC PIO: Do we have a preliminary report of what is happening at the train derailment?	
45	CS	PW	Phone	Citizen calls Public Works Dispatch: Citizen reports PW employee is going door-to-door selling firewood. Is it legal for me to buy from him? He is selling the wood out of an Orange PW Truck #42 -- \$60.00 a cord! Location: Y and 33 rd Streets.	
46	CS	P	Phone	Wife calls EOC Police Operations: I need to get in touch with my husband. He's working and our twins are extremely sick and need to go to the hospital. Can he come home and take them, or should I call an ambulance? Note: Yes, they go to Central City JR. High and have the Norovirus.	
47	P	ALL	Radio	Police Unit arrives at the derailment scene: This time from the south D and 26 th Streets. Reports passenger train derailment with injuries. Need help out here!	

#	Controller	Involved	Technology	Inject	Expected Action Supplemental Information for Controller
48	F	ALL	Radio	<p>First arriving Engine Company assumes Unified Fire Commander position. Report Unified Fire Commander to EOC Fire Operations:</p> <p>Engine 7 is at A and 26th Streets. A major train derailment has occurred between C and E Streets at this location. Six passenger cars travelling eastbound have derailed on the south track and are lying on their side in a 4 foot drainage ditch on the northbound track. An unknown number of passengers are reported to be trapped.</p> <p>Have a Public Works Supervisor report to the incident. We will need access roads on the south and north side of the derailed trains. We will also need a path cut to remove victims from the ditch.</p> <p>Apparently, a freight train traveling eastbound on the center track also initially derailed, causing a freight car to tumble sideways onto the southbound track, blocking the path of the oncoming passenger train, which then caused that passenger train to derail.</p>	<p>Controller Note: 1st Alarm Deployment: Train Derailment Engine 7 - Engine 5 - Engine 6 – Snorkel 8 - Squad 1 - BLS M 7, Battalion 8</p> <p>Staging is located at 28th and A Streets.</p> <p>Requesting a 2nd Alarm.</p>

49	P	PIO	Radio	<p>Police Report Due to the increasing call volumes, the City Police are calling back all available off-duty personnel. In addition, it is requesting further mutual aid assistance from the County and other nearby jurisdictions. All “call backs” should report to Area 2’s station for assignment.</p>	<p><u>PIO:</u> Prepare a press release about the above “call back.” Remind officers to bring their “72 hour kits” with them.</p> <p><u>Optional build:</u> Later on, police can release some personnel and rotate from current shift schedule to using a two platoon system (with two 12-hour shifts, each with approximately 50% of operational personnel).</p>
50	F	F,ALL	Radio	<p>First arriving Medical Unit BLS M7 assumes Unified EMS Commander position. Report Unified EMS Commander to EOC EMS Operations: BLS M 7 is located on the south side of the railroad at 26th and F Streets. A six-car passenger train traveling eastbound has been involved in a derailment between C and E Streets. Six derailed cars are lying on their side in a drainage ditch. An unknown number of people are reported to be injured/ trapped in the cars. A large commitment of ambulances will be needed for this incident at 26th and F Streets.</p>	<p>Controller’s Note:</p> <ul style="list-style-type: none"> • Begin requesting EMS resources slowly. Use of FEMA typing? • Declare an MCI? • Coordinate all requests with Fire. • Establish a casualty collection point (CCP) as soon as possible. • Do not forget there is flooding, and it has been raining hard. • Establish the CCP under route 107. • Establish a transportation group and consider EMS staging area.
51	P	P	Radio	<p>Report Unified Police Commander to EOC Police Operations: Police Units on scene request additional units to seal off area; report to staging area for assignment!</p>	
52	CS	ALL	Phone	<p>Warden at the Liberty County Prison located at A and 23rd streets calls Police Dispatch: Reports smoke from some burning railroad cars around A and the railroad. What’s going on?</p>	

#	Controller	Involved	Technology	Inject	Expected Action Supplemental Information for Controller
53	M	M	Phone	Media inquiry to PIO concerning train derailment: Our reporters in the field have indicated that there may several hundred persons on the derailed train! Can you confirm?	
54	F	F,ALL PW	Radio	Battalion 8 arrives on Scene and Assumes Unified Fire Commander. Report Unified Fire Commander to EOC Fire Operations: 1 st Alarm Units have been deployed. Requesting heavy cutting equipment and more resources for extrication operations. Many people are trapped in the first three cars. Diesel fuel is leaking from the passenger train locomotive.	Requesting 3 rd & 4 th Alarm. Request PW loaders, dozers.
55	F	F,ALL	Radio	Report Unified Fire Commander to EOC Fire Operations: Can you have someone check with Amtrak on the # of passengers on the train? We also have diesel fuel leaking from the passenger train locomotive.	
56	F	F,ALL PW	Radio	Report Unified Fire Commander to EOC Fire Operations: Derailed freight cars are stacked up on top of one another at this site while others are derailed on both sides of the center track.	NOTE: Material (cyclohexylamine) is leaking from car 12. Eventually, a vapor cloud will be visible from this area. Car 12 will roll over later in scenario.

				<p>Some derailed cars are pressurized and many are placarded.</p> <p>Stacked-up cars do not appear to be very stable; they have suffered major physical damage. Presently, there is no fire at this site. We need the assistance of an additional unit.</p>	
57	F	F,ALL	Radio	<p>Report Unified Fire Commander to EOC Fire Operations: The derailment extends from the county line westward into Liberty County. Fire has involved some derailed cars. One of the cars involved in the fire contains diesel fuel. Fuel is leaking from a breach in the side of the diesel car fueling the fire. Fire has spread westerly and involves several other derailed cars west of the diesel car.</p>	Requesting 5 th Alarm.
58	M	PIO	Phone	<p>Media calls EOC PIO: Do you have an update on train derailment?</p>	
59	M	ALL	Phone	<p>Media calls to Police, Fire, EMS, Emergency Management, and Water: Concerning the missing pathogenic organisms.</p>	
60	CS	P	Phone	<p>Store owner calls City Police Dispatch: My store was just robbed! Rhoads Pharmacy at M and 11th streets in Central City. Need assistance!</p>	
61	CS	CS	Phone	<p>Citizen calls EOC Logistics Sections: Heard that there was a shortage of blood! I would like to donate. Where should I go?</p>	

#	Controller	Involved	Technology	Inject	Expected Action Supplemental Information for Controller
62	M	PH,P, PIO	Phone	PIOs update: FBI takes lead in investigation. City police are assisting. CSU police placed back in service at the university. PH has completed its sampling and sent them to the State Lab for PCR. Still unable to locate missing pathogens even after intense questioning of suspect.	
63	M	P,M	Phone	WEMI-News calls PIO: We have heard that a suspect has been arrested for the missing pathogenic materials. What information can you give us? Have the materials been recovered?	PIO meet with P and PH, and then issue press release or call media back: suspect arrested, pathogens still not found, FBI in charge of continuing investigation. Have media contact FBI for further information (for example, about the FBI's HMRU and ERT both responding)
64	M	M,EMS	Phone	Radio Station call PIO: We have heard rumors that the pathogenic organisms have been recovered. Can you confirm?	
65	PW	PW	Phone	Citizen calls Public Works Dispatch: Electric substation at SR-5 and I-107 in Central City is being threatened by surface water flooding (will need to sandbag). Make it a large operation! Can we get assistance from the Parks Dept.? Maybe 10 people, shovels? PW will need to purchase additional bags? Can we get a Purchase Order?	

66	M	M,EPM	Phone	Media call to EOC EPM: Request latest weather information.	
67	M	M,P	Phone	Media call to EOC EPM: Concerning flash flood watch.	
68	M	M,PW	Phone	Media call to Public Works: Can you give us an update on the water main break at L and 13 th Streets? Can you confirm that the water will be out in the area around L and 13 th for 8 hours? Will this affect any of the industry in the area? Report low water pressure, not completely out.	
69	M	PW, PH	Phone	Public Health: Sending an environmental health specialist to work with PW. PIO works with PW to get answers for media.	
70	EMS	PH EMS	Phone	Hospitals calls EOC Public Health Official: They're getting numerous people showing up violently ill. Most of them are young people between 12 and 15 years old.	A quarantine area will be established at hospital and will be announced to incoming EMS units.
71	M	PH	Phone	Media call to Public Health: We understand many students have become violently ill at Central City Jr. High school. Do you know what the illness is? Does it have to do with the broken sewer line? This couldn't be a mass case of meningitis, could it?	
72	EMS	EMS, PH	Phone	School Nurse at Central City Junior High call Public Health: Reports that more kids are sick as well as two cafeteria workers and two teachers. Any idea of what we're dealing with here?	Requesting a health department response.

#	Controller	Involved	Technology	Inject	Expected Action Supplemental Information for Controller
73	PH	PH, EMS	Phone	Public Health: Sending a full Public Health Epidemiology Response Team (PHERT) to hospital to work with hospital staff. PHERT includes an epidemiologist (team leader), a registered nurse, an environmental health specialist, and a clerk.	
74	CS	ALL	Phone	Mayor of Blue Water reports: The Roaring River is over its banks in Blue Water! Need assistance in evacuating 200 homes along the river from the Marshland Housing Project! Calls to EOC.	Need buses for transport.
75	CS	PW,F	Phone	Citizens from around the community calls to Fire, Public Works: Need assistance with pumping out basements. Surface water flooding. Z and 21 st Streets; OO and 11 th Streets; V and 16 th Streets; D and 7 th Streets; J and 33 rd Streets; L and 19 th Streets; BB and 6 th Streets; QQ and 20 th Streets.	Force Policy Decision - Private property issues.
76	P	P,EMS	Radio	State Police Unit reports: Disabled vehicle along I-107 two miles south of Deep River. Woman in labor! Help!	

77	CS	PW	Phone	Motorist calls Public Works Dispatch: Wants drainage grate pulled at FF and 8 th Streets. Keys fell in! In front of Barrio's Hardware Store.	
78	F	F,ALL, PW	Radio	Report Unified Fire Commander to EOC Fire Operations: Many derailed cars have visible physical damage. Some cars do contain hazardous materials. Conducting an initial survey of the derailment site. Be advised this will be an extended operation due to the condition of derailed cars and possible spillage of unknown chemicals at this time.	
79	F	F,ALL, PW	Radio	Report Unified Police Commander to EOC Police Operations: A medium volume of black smoke is entering the residential areas. An Evacuation Group has been established northeast of the derailment.	PW planning to build access roads from the North at A/24 th St to freight cars. From the South at G and 26 th . Is this ok with everyone? ETA 1-2 hours.
80	F	F,ALL	Radio	Report Unified Fire Commander to EOC Fire Operations: Can you get us an updated weather forecast? The winds appear to be coming out of the Southwest. Can you confirm?	

#	Controller	Involved	Technology	Inject	Expected Action Supplemental Information for Controller
81	PW	F,PW, ALL	Radio	<p>Public Works supervisor arrives and assumes Unified PW Commander position: Report Unified PW Commander to EOC PW Operations:</p> <p>There is a heavy flow of water in the drainage ditch where the derailed cars are lying making extrication of trapped victims difficult. Will need to build dikes across both the south and north tracks. Dike to be built at C & H Streets, ETA 1 hour. Need to divert the flow of water in the ditch quickly.</p>	Does PW need to wear SCBA? Are there equipment operators who are certified?
82	F	F,ALL		<p>EMS supervisor ALS M 1 arrives and assumes Unified EMS Commander position: Report Unified EMS Commander to EOC EMS Operations:</p> <p>Request one strike team of ALS ambulances. We do have fatalities. Extrication processes are difficult because of the water buildup in the drainage ditch. Many victims are entangled beneath seats. Diverting the flow of water in the drainage ditch is critical for the safe removal of the trapped victims. It is extremely difficult to carry victims up the railroad embankment slope to an ambulance.</p>	<p>DO NOT RELEASE AT THIS TIME</p> <ul style="list-style-type: none"> • 60 minor injuries--ambulatory patients (green tags) • 58 serious/critical injuries—non-ambulatory patients (red or yellow tags) • 20 DOA (5 still entrapped) red tags • 2 survivors trapped • 120 total to be transported <p>Request a surgical team to respond. EMS Controller's Note: The following information shall be released during the incident: Reports on victim removal and delivery of patients to a hospital should be factored on time required to triage, treat, and transport.</p>

				Ambulances cannot access the track level. A temporary road down to track level for ambulance access is needed.	COORDINATE RELEASE OF PATIENT INFORMATION WITH FIRE EXERCISE CONTROLLER.
83	P	P	Radio	Liberty County Prison reporting: Continuing smoke problems with some staff and inmates complaining of headaches and difficulty breathing.	<u>Optional build:</u> In 10 minutes, advise that prison is reporting three unconscious inmates. The guards are attempting to gain access to them. Meanwhile, the prison has decided to move prisoners to a safer area at the opposite side of compound. In the process of accomplishing this, a small group of four prisoners attempts to escape, injuring two guards, and so on. This inject can end there or it can continue on with the prisoners actually taking a guard hostage and attempting to move further on to actual escape.
84			Phone	Citizen calls Fire Dispatch: Citizen reports a house fire at K and 9 th Streets in Central City. Two-story wood frame structure; smoke from upper story window.	

#	Controller	Involved	Technology	Inject	Expected Action Supplemental Information for Controller
85	F	F, PW	Radio	<p>Report Unified Fire Commander to EOC Fire Operations: Report the train contained 60 freight cars. State that the conductor applied the brakes because a person was on the tracks; this person was hit by the train and is DOA. When the brakes were applied, the train broke apart between the 9th and 10th cars.</p> <p>The two locomotives and Cars 1 to 6 remain on the center track. Cars 7, 8, and 9 were thrown onto the south track, causing the eastbound passenger train to derail. The remaining 50 cars of the freight train are derailed further west towards the county. Water in the drainage ditch is severely hampering rescue operations.</p>	<p>Requesting heavy cutting equipment and personnel to act as stretcher bearers to move victims. Many of the victims are entangled in the seats and metal inside the train.</p> <p>Can PW help? What kind of PPE will they need? Are they certified, can we certify them?</p> <p>Controller's Note: Coordinate with EMS on casualty reporting.</p>
86	F	F, ALL	Radio	<p>Report Unified EMS Commander to EOC EMS Operations: One person walking along the center track caused the freight train to brake. The freight train's sudden braking action caused the freight train to break apart, derailling Cars 6, 7, 8, and 9.</p> <p>Car 9 derailed onto the south track, which then caused the eastbound passenger train to hit it and derail all six passenger cars. The person hit by the freight train was DOA on the track.</p>	<p>Controller's Note: Begin transporting casualties slowly; keep fire controller informed. Please monitor the following: the coroner should be notified and be en-route to the scene, hospitals should have been notified, surgical teams should have been notified, EMA mutual aid should have been activated, the procurement of additional medical supplies should be initiated, etc.</p> <ul style="list-style-type: none"> Notify ME/Coroner who should be en-route

				The passenger train was carrying students from Columbia State University. There could be as many as 100 casualties in the derailed cars. Need all medical resources.	<ul style="list-style-type: none"> • Establish Triage, Treatment, Transportation • Special resources (surgical teams, air ambulances) • Set up ambulance staging and patient loading areas • Will need medical supply caches- logistics • Notify all impacted hospitals <p>Required transport resources: ALS, BLS, Buses</p>
87	M	PIO	Phone	Media call to EOC PIO: Can you update situation at train derailment?	
88	CS	EPM	Phone	Citizen calls EOC EPM: Reports that the siren at F and 30 th Streets did not go off during yesterday's routine test. Better have someone check it out!	
89	F	F,ALL, PW	Radio	Report Unified PW Commander to EOC PW Operations: Need more resources, manpower, tools, and heavy cutting equipment. Flow of water in the drainage ditch is hampering operations. Will need an additional dike across the center track.	PW may need additional resources and fill material to complete the roads.

#	Controller	Involved	Technology	Inject	Expected Action Supplemental Information for Controller
90	F	F,ALL	Radio	<p>Report Unified Fire Commander to EOC Fire Operations: Approximately 40 freight cars are derailed or partially derailed on the center track from the county line westward. Many contain hazardous materials and may have suffered some physical damage.</p> <p>Continuing to survey the derailment area and preparing a list of the derailed cars and the damage suffered. Notify the railroad authorities that we need the train consist and request that railroad representatives respond to the derailment site.</p> <p>There is a yellowish material leaking from Car 12, approximately 35 to 40 gpm. Car 12 placard number is 2357.</p> <p>Be advised, the water in the drainage ditch may become contaminated with any leaking product.</p> <p>The students/passengers are from Columbia State University.</p>	<p>Request a toxicologist and/or environmental specialist to report to your ICP for face-to-face discussion.</p> <p>Has NTSB been requested?</p>

91	Ph	PH	Radio	PH Integrating Medical Reserve Corps: Members into its PHERTs. PH expects to send out more of these teams as other hospitals are reporting similar symptoms reported in Original Inject #63 and new inject #34.																
92	P	F,P	Radio	Sheriff's Department has arrived at CP: It looks like most of the freight train is derailed west of A Street in the county.																
93	CS	ALL	Phone	Citizens in the county begin to report smoke from the train derailment to Police Dispatch: Give a location West of Central City and the railroad.																
94	CS	F	Phone	Amoco Fuel Supply Company informs the Fire Operations: A new delivery driver may have put regular gasoline into one or more of the fire station diesel tanks. Checking it out!																
95	F, EMS	F, EMS	Radio	Report Unified EMS Commander to EOC EMS Operations: Have removed three serious victims from Car 4 and one DOA. Notify the coroner.	Controller Note: victim count to date <table> <thead> <tr> <th>Totals for Incident</th> <th>Found</th> <th>Remain</th> </tr> </thead> <tbody> <tr> <td>60 minor (green)</td> <td>0</td> <td>60</td> </tr> <tr> <td>58 delayed (yellow)</td> <td>3</td> <td>55</td> </tr> <tr> <td>20 fatalities (black)</td> <td>1</td> <td>19</td> </tr> <tr> <td>2 live but trapped (red)</td> <td>0</td> <td>2</td> </tr> </tbody> </table>	Totals for Incident	Found	Remain	60 minor (green)	0	60	58 delayed (yellow)	3	55	20 fatalities (black)	1	19	2 live but trapped (red)	0	2
Totals for Incident	Found	Remain																		
60 minor (green)	0	60																		
58 delayed (yellow)	3	55																		
20 fatalities (black)	1	19																		
2 live but trapped (red)	0	2																		
96	F	F, EMS		Report Unified Fire Commander to EOC Fire Operations: <table> <thead> <tr> <th>Totals for Incident</th> <th>Found</th> <th>Remain</th> </tr> </thead> <tbody> <tr> <td>60 minor</td> <td>0</td> <td>60</td> </tr> <tr> <td>58 delayed</td> <td>7</td> <td>51</td> </tr> <tr> <td>20 fatalities</td> <td>1</td> <td>19</td> </tr> <tr> <td>2 live but trapped</td> <td>0</td> <td>2</td> </tr> </tbody> </table>	Totals for Incident	Found	Remain	60 minor	0	60	58 delayed	7	51	20 fatalities	1	19	2 live but trapped	0	2	Controller Note: victim count to date
Totals for Incident	Found	Remain																		
60 minor	0	60																		
58 delayed	7	51																		
20 fatalities	1	19																		
2 live but trapped	0	2																		

#	Controller	Involved	Technology	Inject	Expected Action Supplemental Information for Controller
97	NTSB	P	Radio	<p>NTSB calls EOC Police Chief in Policy: The National Transportation Safety Board (NTSB) contacts police by phone to advise them to hold the freight train conductor for them. The NTSB has an investigation team headed to the train derailment site. Estimated arrival is three to four hours.</p>	
98	P	F,EMS, PW	Radio	<p>Report Unified Police Commander to EOC Police Operations: Smoke is still lying low in this area. There is a foul, fishy odor entering the area. At this time, no residents have been evacuated from their homes.</p> <p>Rain is still very heavy in this area. The neighborhood is mostly scattered residential with some commercial properties. The majority of the residents in this area appear to be elderly. May need transportation assistance for evacuation of elderly.</p>	Request additional police assistance for possible evacuation.

99	F	F,ALL	Radio	<p>Report Unified Fire Commander to EOC Fire Operations: Freight train derailment begins at 25th and A Streets and continues westward. The first two cars of the derailment, 10 and 11, contain anhydrous ammonia; they are stacked up on one another.</p> <p>The physical condition of the cars has not yet been determined. Cars 12 and 13 contain cyclohexylamine (Placard 2357) and are stacked up on one another. Car 12 is leaking material around the manway. Preparing to set up gross decon for responders and victims (prior to transport to treatment and hospital).</p>	
100	State	PH	Phone	<p>State Health Official calls EOC Public Health Official: State PH advises it has a disaster mortuary response team (a.k.a "DMORT," with 3 medical examiners, 6 techs, 6 morticians, 1 clerk) available to send out if they decide they want a field mortuary site. They also have a dedicated refrigerator tractor trailer that they can bring to the site. Estimated travel time is thirty minutes to one hour. Please advise.</p>	
101	F	F,ALL, PW	Radio	<p>Report Unified PW Commander to EOC PW Operations: Need more barricading to close roads near the derailment. There is a visible vapor cloud coming from around Cars 12 and 13. It is traveling towards the residential area.</p>	Is it safe to be in this area?

#	Controller	Involved	Technology	Inject	Expected Action Supplemental Information for Controller
102	F	F,ALL	Radio	<p>Report Unified Fire Commander to EOC Fire Operations: The fire in the cargo train has involved four freight cars. Two are automobile carrying cars; one is a hopper car containing plastic pellets, and one contains diesel fuel. Diesel fuel is also leaking from a gouge in the side of the car. Fire is threatening to impinge upon two chlorine cars east of the diesel fuel car. Report that the chlorine car appears to be leaking around the relief valve area.</p>	
103	CS	P	Phone	<p>Citizen calls the Police Dispatch: House has started to wash down the hillside at I-102 and SR-5. Other homes are below! Need some help! (Evacuate 10 homes in the area.)</p>	
104	ALL	ALL	Phone FAX	<p>NWS has issued a flash flood warning: For the Valley Areas of the Mineral Mountains and areas adjacent to Roaring River in Liberty County. Low lying areas in the county should be prepared to evacuate if necessary. Rain is expected to continue throughout the day with winds out of the SW at 5-10 mph. The Roaring River is expected to crest well below flood stage in central city but some flooding can be expected along portions of the Swatera Creek!</p>	

105	EMS	ALL	Radio	<p>Report Unified EMS Commander to EOC EMS Operations: Request that Red Cross set up an ambulatory first-aid facility south of the derailment site. We currently have 30 first-aid cases that need attention. Need hospital availability and transportation routes.</p>	<table> <thead> <tr> <th>Totals for Incident</th> <th>Found</th> <th>Remain</th> </tr> </thead> <tbody> <tr> <td>60 minor (green)</td> <td>30</td> <td>30</td> </tr> <tr> <td>58 delayed (yellow)</td> <td>7</td> <td>51</td> </tr> <tr> <td>20 fatalities (black)</td> <td>1</td> <td>19</td> </tr> <tr> <td>2 live but trapped (red)</td> <td>0</td> <td>2</td> </tr> </tbody> </table> <p>Controller Note: Notify EMS personnel in EOC of casualty counts and hospital bed status.</p>	Totals for Incident	Found	Remain	60 minor (green)	30	30	58 delayed (yellow)	7	51	20 fatalities (black)	1	19	2 live but trapped (red)	0	2
Totals for Incident	Found	Remain																		
60 minor (green)	30	30																		
58 delayed (yellow)	7	51																		
20 fatalities (black)	1	19																		
2 live but trapped (red)	0	2																		
106	PH	PH	Phone	<p>Report from PH: Several hospitals have contacted the State PH Hospital's Coordinator indicating that due to various issues (medical staffing, available emergency department and ICU beds, and/or patient intake) they may have to go on diversion.</p> <p>Conference call with all hospitals local PH, and State PH results in decision to:</p> <ol style="list-style-type: none"> 1) perform early release of as many non-critical patients as possible 2) cancel all elective surgeries 3) call back all medical staff (if not already done so) <p>State PH Hospital's Coordinator will take lead in determining how to affect diversion (which hospitals will divert, which will receive, how hospitals outside of the City/County area will be involved, etc.).</p>	<p>Hold follow-up conference call in one hour.</p> <p><u>Optional build:</u> If diversion is actually undertaken at a hospital, patients can call outside relatives, who then angrily arrive and argue with hospital personnel. Police have to be called, etc. When actual transport to the receiving hospital begins, there is an auto accident with injuries involving the diverted patients.</p>															

#	Controller	Involved	Technology	Inject	Expected Action Supplemental Information for Controller
107	F	F,ALL, PW	Radio Fax	<p>Report Unified Fire Commander to EOC Fire Operations: Haz Mat Group has received the Consist; we will give you the contents of all derailed cars and their positions. Inform us when you are prepared to copy information. Request the Public Works Supervisor to build another dike because the water is backing up and interfering with operations around the freight cars.</p>	<p>Controller's Note: Give position and contents of all derailed Cars 10 to 60. Eventually Consist will be transmitted via fax to the CP. This will simulate that a runner delivered the Consist to the ICP.</p>
108	F	F, ALL	Radio	<p>Report Unified Fire Commander to EOC Fire Operations: Priority: Car 12 has just rolled over. Leak around the manway has increased greatly; approximately 75 gpm now are leaking from the car. The material is pooling and running towards the south track area.</p>	
109	F	F, ALL	Radio	<p>Report Unified PW Commander to EOC PW Operations: A fishy odor is in this area. Appears to be getting stronger. There is a vapor cloud visible in the area. We might need help building access roads. Can we use a contractor without doing bids? We need a Health Monitoring Team on site. Elderly residents are beginning to complain about having difficulty breathing.</p>	<p>Controller Note: Establish IDLH zones for a vapor release.</p>

				Where does IC want barricades to close roads and which roads?																
110	M	ALL	Phone	Citizen calls Public Works: Citizen reports falling rocks, mudslides due to rainfall one mile north of Deep River on I-107 (road blocked) call Police Dispatch!																
111	M	ALL	Phone	Media inquiries to PIO: Concerning derailment (products, injuries, etc.).																
112	F	F	Radio	Report Unified Fire Commander to EOC Fire Operations: Have removed four victims from car 5, and two fatalities in car 5.	<table> <thead> <tr> <th>Totals for Incident</th> <th>Found</th> <th>Remain</th> </tr> </thead> <tbody> <tr> <td>60 minor (green)</td> <td>30</td> <td>30</td> </tr> <tr> <td>58 delayed (yellow)</td> <td>12</td> <td>46</td> </tr> <tr> <td>20 fatalities (black)</td> <td>3</td> <td>17</td> </tr> <tr> <td>2 live but trapped (red)</td> <td>0</td> <td>2</td> </tr> </tbody> </table> <p>Controller Note: Victim count to date</p>	Totals for Incident	Found	Remain	60 minor (green)	30	30	58 delayed (yellow)	12	46	20 fatalities (black)	3	17	2 live but trapped (red)	0	2
Totals for Incident	Found	Remain																		
60 minor (green)	30	30																		
58 delayed (yellow)	12	46																		
20 fatalities (black)	3	17																		
2 live but trapped (red)	0	2																		
113	EMS	EMS	Radio	Report Unified EMS Commander to EOC EMS Operations: Have removed three victims from car 3 and one fatality in car 3.	<table> <thead> <tr> <th>Totals for Incident</th> <th>Found</th> <th>Remain</th> </tr> </thead> <tbody> <tr> <td>60 minor (green)</td> <td>30</td> <td>30</td> </tr> <tr> <td>58 delayed (yellow)</td> <td>15</td> <td>43</td> </tr> <tr> <td>20 fatalities (black)</td> <td>4</td> <td>16</td> </tr> <tr> <td>2 live but trapped (red)</td> <td>0</td> <td>2</td> </tr> </tbody> </table> <p>Controller Note: Victim count to date</p>	Totals for Incident	Found	Remain	60 minor (green)	30	30	58 delayed (yellow)	15	43	20 fatalities (black)	4	16	2 live but trapped (red)	0	2
Totals for Incident	Found	Remain																		
60 minor (green)	30	30																		
58 delayed (yellow)	15	43																		
20 fatalities (black)	4	16																		
2 live but trapped (red)	0	2																		

#	Controller	Involved	Technology	Inject	Expected Action Supplemental Information for Controller
114	M	ALL	TV Phone	<p>News Bulletin #3: Update on the train derailment.</p> <p>WEMI has learned from a source at the CSU that the train involved in the derailment contained students from the university who were conducting agricultural research west of Central City; the source stated that approximately 140 students were on the train.</p> <p>Numerous children from the Central City Jr. High School have come down with a mysterious illness. Numerous children did not go to school because they were ill and numerous students who turned up for school became ill, some having to be hospitalized. So far this mysterious illness seems to be isolated to Central City Jr. High School. Public health is trying to determine what this illness is and what caused it.</p>	
115	P	P	Phone Fax	<p>Report on PH and PIO conference call: The media's report of a "mysterious illness" at Central City Jr. High School. PIO will respond to media with an update that includes the following:</p> <ol style="list-style-type: none"> 1. Initial testing of students indicates this is a norovirus outbreak. The PHERTs at 	

				<p>hospitals coming to same conclusion.</p> <p>2. Background: Norovirus is a very contagious virus. You can get norovirus from an infected person, contaminated food or water, or by touching contaminated surfaces. The virus causes your stomach, intestines, or both to get inflamed (acute gastroenteritis). This leads to stomach pain, nausea, diarrhea, and vomiting.</p> <p>3. Prevention: PIO should check CDC's "Preventing Norovirus Infection" website for information.</p> <p>4. Treatment: Dehydration is the biggest problem, so fluid replacement by drinking liquids and/or IV therapy is needed.</p> <p>5. Contact local PH if need further information, asking for epidemiologist or communicable disease nurse.</p>										
116	CS	PW	Phone	<p>Citizen calls Public Works Dispatch: Citizens, response crews report that the Swatera Creek bank is full - coming over in several places -- need assistance! (Locations below)</p> <table style="margin-left: 40px;"> <tr> <td>J and 6th</td> <td>L and 6th</td> <td>M and 6th</td> </tr> <tr> <td>N and 6th</td> <td>C and 4th</td> <td>D and 4th</td> </tr> <tr> <td>E and 4th</td> <td>B and 4th</td> <td>Road Closed</td> </tr> </table>	J and 6 th	L and 6 th	M and 6 th	N and 6 th	C and 4 th	D and 4 th	E and 4 th	B and 4 th	Road Closed	
J and 6 th	L and 6 th	M and 6 th												
N and 6 th	C and 4 th	D and 4 th												
E and 4 th	B and 4 th	Road Closed												
117	CS	P, PW	Phone	<p>Citizen calls Public Works Dispatch: Citizen reports tree down blocking the roadway at U and 34th Streets. Need assistance!</p>										
118	F	ALL	Radio	<p>Report Unified Fire Commander to EOC Fire Operations: Initial evacuation area established around the train derailment. May have issued earlier.</p>	Request barricades.									

#	Controller	Involved	Technology	Inject	Expected Action Supplemental Information for Controller
119	F	F	Radio	<p>Report Unified Fire Commander to EOC Fire Operations: Have located some radioactive materials within the derailment site. Car 43 contains uranium hexafluoride cylinders. Cylinders are approximately 30 inches long. They are attached to the car with four cylinders in each stack. Two of the cylinders have broken loose from their stacks and are lying on the track bed. They do not appear to be leaking. The remaining six cylinders are still attached to the car. Need advice.</p>	<p>Controller Note: Involve emergency management officials, radiological team, etc. Contact the Health Department and get a radiological assistance specialist to the ICP to give advice on monitoring, protective actions to take for responders, and any advice if public exposure is possible, such as recommending action guides for the public. They can advise the PIO.</p> <p>Will the nursing home at E/23 be evacuated? Need air conditioned or heated (seasonal) buses for the elderly if evacuated. Request 7th Alarm</p>
120	F	F,ALL	Radio	<p>Report Unified PW Commander to EOC PW Operations: The water in the drainage ditch is continuing to cause a problem. We need more cutting torches. We are having difficulty cutting through the train components. We need additional manpower resources to help in the extrication process. Responders are tiring very easily. We need portable pumps to help alleviate the water problem in the ditch.</p>	<p>PW - Will prison be evacuated?</p>

121	F	ALL	Radio	<p>Report Unified EMS Commander to EOC EMS Operations: We are having some extrication problems. We need a surgical team on the scene as soon as possible. We are experiencing long carries to the casualty loading area from the CCP. Responders are tiring. Need more spinal immobilization and wound management supplies. The water in the ditch is continuing to be a major problem. There appears to be a yellowish tint in the ditch water. Need more pumping of rain water.</p>	
122	Ph	F,PH	Radio	<p>Public Health reports: Sending three-person radiological monitoring team to site.</p>	<p><u>Background information:</u> Many states, such as Columbia, maintain radiological monitoring capabilities at the State-level as well as at the local level. Usually, these State capabilities are located in fire (or fire marshal's office), emergency management, and/or public health. They often conduct routine periodic radiological monitoring to check radiation levels in air, drinking water, vegetation, and milk (directly from farms with dairy cows) at multiple sites throughout the state. This baseline testing has been completed for both Central City and Liberty County. As a result, the radiological monitoring team has baseline data with known background radiation levels already calculated for the areas involved.</p>

#	Controller	Involved	Technology	Inject	Expected Action Supplemental Information for Controller															
123	EMS	EMS		Report Unified EMS Commander to EOC EMS Operations: Received two victims, serious; and one DOA from car 6.	<table> <thead> <tr> <th>Totals for Incident</th> <th>Found</th> <th>Remain</th> </tr> </thead> <tbody> <tr> <td>60 minor (green)</td> <td>30</td> <td>30</td> </tr> <tr> <td>58 delayed (yellow)</td> <td>17</td> <td>41</td> </tr> <tr> <td>20 fatalities (black)</td> <td>5</td> <td>15</td> </tr> <tr> <td>2 live but trapped (red)</td> <td>0</td> <td>2</td> </tr> </tbody> </table> Controller Note: Victim count to date	Totals for Incident	Found	Remain	60 minor (green)	30	30	58 delayed (yellow)	17	41	20 fatalities (black)	5	15	2 live but trapped (red)	0	2
Totals for Incident	Found	Remain																		
60 minor (green)	30	30																		
58 delayed (yellow)	17	41																		
20 fatalities (black)	5	15																		
2 live but trapped (red)	0	2																		
124	Ph	PH	Radio	Public Health Reports: The MRC has a Mobile Field Surgical Team modeled on the one used by the US military. It is composed of retired, but currently licensed, physicians and surgical nurses. They draw equipment from a variety of area hospitals but maintain a trailer with equipment, medications, and supplies at CSU's Student Health Center located at MM and 33 rd Streets. This unit is staged already and can pick up the trailer and be on-scene within 30 to 45 minutes. EOC decision needed.																
125	EMS	EMS	Radio	Report Unified EMS Commander to EOC EMS Operations: Received 3 victims, serious; and one DOA from car 1	<table> <thead> <tr> <th>Totals for Incident</th> <th>Found</th> <th>Remain</th> </tr> </thead> <tbody> <tr> <td>60 minor (green)</td> <td>30</td> <td>30</td> </tr> <tr> <td>58 delayed (yellow)</td> <td>19</td> <td>39</td> </tr> <tr> <td>20 fatalities (black)</td> <td>6</td> <td>14</td> </tr> <tr> <td>2 live but trapped red</td> <td>0</td> <td>2</td> </tr> </tbody> </table> Controller Note: Victim count to date	Totals for Incident	Found	Remain	60 minor (green)	30	30	58 delayed (yellow)	19	39	20 fatalities (black)	6	14	2 live but trapped red	0	2
Totals for Incident	Found	Remain																		
60 minor (green)	30	30																		
58 delayed (yellow)	19	39																		
20 fatalities (black)	6	14																		
2 live but trapped red	0	2																		

126	PW	PW	Radio	<p>Report PW Unified Commander to EOC Public Works Operations: Give status of road construction (access to train victims), make sure stone, equipment etc. is there. Request additional resources as necessary.</p>	We are going to need two mechanics on scene to keep equipment running. (PW)
127	PW	PW	Radio	<p>Report PW Unified Commander to EOC Public Works Operations: Give status of drainage ditch construction (to keep materials from reaching rescue efforts). Request additional resources as necessary.</p>	With all the rain, those ditches are only going to hold so long.
128	F	PW	Radio	<p>Report Unified Fire Commander to EOC Fire Operations: There is a 12KV line over the area we are operating at; verify power is off.</p>	
129	PW	PW	Radio	<p>Report PW Unified Commander to EOC Public Works Operations: Main support power poles at edge of railroad right of way need to be inspected. They may have been damaged from the crash. A couple of the poles are leaning. Location: Along 24th Street between A and E. Can we get someone from the electric company down here to check it out?</p>	
130	PW	PW	Radio	<p>Report PW Unified Commander to EOC Public Works Operations: Have debris on 24th and 26th Streets near derailment. Between A and F Streets. Roads need to be cleared or barricaded until we get these access roads built.</p>	

#	Controller	Involved	Technology	Inject	Expected Action Supplemental Information for Controller
131	CS	EOC	Phone	Citizen who lives north of the rail incident calls EOC Planning Section: I live at G/22 nd Streets; I have heard about the train derailment. Is it safe for me to stay in my home with the windows shut, or should I evacuate?	
132	CS	EPM	Phone	Citizen who lives north of the rail incident EOC EPM: I live at B/22 nd Streets. I have heard about the train derailment. Is it safe for me to stay in my home with the windows shut, or should I evacuate? Where is the nearest shelter?	
133	CS	EPM	Phone	Citizen who lives north of the rail incident calls EOC EPM: I live at C/21 st Streets. I have heard about the train derailment. Is it safe for me to stay in my home with the windows shut, or should I evacuate? Where is the nearest shelter?	
134	CS	F	Phone	Citizen who lives north of the rail incident calls Fire Dispatch: I live at F/23 rd Streets. I have heard about the train derailment. Is it safe for me to stay in my home with the windows shut, or should I evacuate?	

135	CS	P	Phone	Citizen who lives north of the rail incident calls Police Dispatch: I live at D/21 st Streets. I have heard about the train derailment. Is it safe for me to stay in my home with the windows shut, or should I evacuate? Where is the nearest shelter?	
136	CS	EMS	Phone	Citizen who lives north of the rail incident calls EMS Dispatch: I live at E/ 22 nd Streets. I have heard about the train derailment. Is it safe for me to stay in my home with the windows shut, or should I evacuate? Where is the nearest shelter?	
137	CS	PW	Phone	Citizen who lives north of the rail incident calls Public Works Dispatch: I live north of the railroad tracks in the county. I have heard about the train derailment. Is it safe for me to stay in my home with the windows shut, or should I evacuate?	
138	CS	P	Phone	Citizen who lives north of the rail incident calls Police Dispatch: I live north of the railroad tracks in the county. I have heard about the train derailment. Is it safe for me to stay in my home with the windows shut, or should I evacuate? Where is the nearest shelter?	
139	CS	F	Phone	Citizen who lives north of the rail incident calls Fire Dispatch: I live north of the railroad tracks in the county. I have heard about the train derailment. Is it safe for me to stay in my home with the windows shut, or should I evacuate? Where is the nearest shelter?	

#	Controller	Involved	Technology	Inject	Expected Action Supplemental Information for Controller
140	CS	EOC	Phone	Citizen who lives north of the rail incident calls EOC Manager in Coordination: I live at G/23 rd Streets. I have heard about the train derailment. Is it safe for me to stay in my home with the windows shut, or should I evacuate?	
141	CS	EOC	Phone	Citizen who lives north of the rail incident calls EOC Operations Section Chief: I live at A/23 rd Streets. I have heard about the train derailment. Is it safe for me to stay in my home with the windows shut, or should I evacuate? Where is the nearest shelter?	
142	CS	EOC	Phone	Citizen who lives north of the rail incident calls emergency management in policy: I live at G/ 23 rd Streets. I have heard about the train derailment. Is it safe for me to stay in my home with the windows shut, or should I evacuate? Where is the nearest shelter?	

143	PW	PW, F, PIO	Radio	<p>Report PW Unified Commander to EOC Public Works Operations: Debris and railroad cars are lying on top of the gas isolation valve near the railroad at D/24th Streets. Should this section of 5" be taken out of service? Tremendous impact from crash may have disturbed isolation valve of 5" line. Need to check area for leaks. Can we get someone from the gas company out here?</p> <p>Should we take area around derailment off line to avoid possibility of fire? Need to mark off ground all our underground lines to avoid damage by heavy equipment.</p>	Does PIO and Fire Department know about this?
144	PW	PW, F	Radio	<p>Report PW Unified Commander to EOC: Public Works Operations. Pile of cars is very near telephone lines on 26th Street. Need to inspect lines and poles for damage from derailment. May need to shore up or support or brace them. Need telephone company on scene. Need to check our telephone cable supported under I-107 Bridge.</p>	Does PIO know about this?

#	Controller	Involved	Technology	Inject	Expected Action Supplemental Information for Controller
145	Ph	PH	Phone	<p>Public Health reports: Additional meningitis cases from students and staff at CCJHS. Local PH believes that there may be a need to segregate these patients at hospitals. Local PH suggests to State PH that they recommend to hospitals (through State PH Hospital Coordinator) to quickly move these patients to an isolation ward at each hospital. Local PH is pushing for a decision as soon as possible.</p> <p>Action: However, PH, both state and local, have just received information through Epi-X that a boy scout troop from Central City spent a week camping at Yellowstone National Park and may have been exposed to a hanta-virus. The scouts have apparently just returned home. CDC has sketchy information on the names and locations of the individual scouts and has so far been unable to contact the Scoutmaster. CDC needs the local PH to contact the Scoutmaster post haste (CDC will fax his contact information) and then begin to locate the individual scouts. More information shortly.</p>	<p>Optional build: A further communicable disease problem.</p> <p>Background: CDC maintains the Epidemic Information Exchange (Epi-X): an efficient channel for seasoned public health professionals to broaden their electronic networks about current diseases and how to treat them and prevent their spread.</p> <p>The Epi-X network includes epidemiologists, laboratorians, veterinarians, health officers, environmental health specialists, statisticians, pharmacologists, and other key health officials from local, state, and federal agencies. Epi-X is a secure communication system. Local and State PH have already posted on Epi-X about both the meningitis outbreak and the norovirus outbreak.</p>
146	CS	F,PW	Phone	<p>Citizen calls Public Works: Citizen reports that a transformer across the street is smoking/popping off. Need some assistance! K/10th Streets.</p>	

147	CS	P, F, EMS	Phone	Citizen reports: 3-car accident with injuries at I-107 and SR5. Need help. 2 injuries!																
148	CS	CS, P	Phone	Principal McNamara H.S: Reports several non-students entered the building and ransacked the locker room area (I-107/18 th Street).																
149	M	PW	Phone	Media inquiry to Public Works: On the level of the water on Roaring River!																
150	EMS	EMS	Radio	Report Unified EMS Commander to EOC EMS Operations: Received three victims serious, and one DOA from car 5.	<table> <thead> <tr> <th>Totals for Incident</th> <th>Found</th> <th>Remain</th> </tr> </thead> <tbody> <tr> <td>60 minor (green)</td> <td>30</td> <td>30</td> </tr> <tr> <td>58-delayed (yellow)</td> <td>22</td> <td>36</td> </tr> <tr> <td>20 fatalities (black)</td> <td>7</td> <td>13</td> </tr> <tr> <td>2 live but trapped (red)</td> <td>0</td> <td>2</td> </tr> </tbody> </table> <p>Controller Note: Victim count to date</p>	Totals for Incident	Found	Remain	60 minor (green)	30	30	58-delayed (yellow)	22	36	20 fatalities (black)	7	13	2 live but trapped (red)	0	2
Totals for Incident	Found	Remain																		
60 minor (green)	30	30																		
58-delayed (yellow)	22	36																		
20 fatalities (black)	7	13																		
2 live but trapped (red)	0	2																		
151	EMS	EMS	Radio	Report Unified EMS Commander to EOC EMS Operations: Received three victims, serious, from car 3.	<table> <thead> <tr> <th>Totals for Incident</th> <th>Found</th> <th>Remain</th> </tr> </thead> <tbody> <tr> <td>60 minor (green)</td> <td>30</td> <td>30</td> </tr> <tr> <td>58-delayed (yellow)</td> <td>25</td> <td>33</td> </tr> <tr> <td>20 fatalities (black)</td> <td>7</td> <td>13</td> </tr> <tr> <td>2 live but trapped (red)</td> <td>0</td> <td>2</td> </tr> </tbody> </table> <p>Controller Note: Victim count to date</p>	Totals for Incident	Found	Remain	60 minor (green)	30	30	58-delayed (yellow)	25	33	20 fatalities (black)	7	13	2 live but trapped (red)	0	2
Totals for Incident	Found	Remain																		
60 minor (green)	30	30																		
58-delayed (yellow)	25	33																		
20 fatalities (black)	7	13																		
2 live but trapped (red)	0	2																		
152	PH	PH	Radio Phone	Public Health Reports: DMORT unit arrives on scene, sets up, begins photographing fatalities in situ, then starts to move bodies into refrigerated trailer. DMORT team leader mentions that they have a "sister unit" at the state-level, a Disaster Medical Assistance Team (DMAT). PH and EOC: make a decision to definitely activate this unit, where to use it most productively, etc.	<u>Optional build:</u> A pastoral care group wishes to go to the scene to begin counseling victims. Many logistical problems need to be resolved: pick someone who isn't currently busy to deal with these issues.															

#	Controller	Involved	Technology	Inject	Expected Action Supplemental Information for Controller
153	M	M	Phone	Media inquiry to EOC Logistics Section: Where have the residents from the Blue Water Housing Development been taken? Did you have to open any shelters?	
154	CS	F	Phone	Teacher from the Collins E.S. at CC and 30th streets calls the Fire Dispatch: Could someone from the fire department come into my 4 th grade class next week to talk about fire prevention?	
155	F	F	Radio	Report Unified Fire Commander to EOC Fire Operations: Extrication crews are reporting that they are getting a fishy smell from the water in the drainage ditch. There is a yellow tint to the water in the ditch. Our PPE is getting heavy from the water; we need dry clothing.	PW wants to stockpile diking soil. Does the IC have a specific place to do this? PW suggestion: bring in 200-300 cubic yards.
156	F	F	Radio	Report Unified PW Commander to EOC PW Operations: The upper dam for the drainage ditch has been completed. Request bags for clothing, and do gross decon of members. Request large drums to pack the bagged clothing after removal.	

				Request a large portable container to collect and secure the drums until we can deal with that issue.	
157	PH	PH, PIO	Radio	PH request: Mutual aid from other MRCs around the state.	<u>PIO:</u> Work with PH to develop the message and then use media to announce. PH will use HAN to accomplish the same thing internally.
158	F	F	Radio	Report Unified Fire Commander to EOC Fire Operations: The bulk of the fire has been knocked down in Cars 34 and 35. Car 33 (diesel car) is still burning profusely; we are beginning to flow foam onto the diesel fire. Attempting to keep the chlorine car cool. Fire is still impinging upon it. Car 36, the hopper car which contains plastic pellets, has fire deeply embedded in the car. It is difficult to get water to the seat of the fire.	Controller's Note: EOC may suggest use of backhoe to dig out fire (inform at this time it may be too dangerous due to adjacent cars because of stability/shifting). Also LPG cars are nearby. Car 37 unstable at 45-degree angle.
159	CS	PW	Phone	Citizen calls Public Works: Muddy tap water in home; is the whole area affected? What should we be doing? (O and 13 th streets)	
162	CS	P, EMS	Phone	CSU official calls EOC Manager: Confirms that there were 140 students from the University on the derailed train. Want to assist in any way possible!	
163	ALL	ALL	Radio	Response crews: Around Swatera Creek, flooding in Central City. Report water over banks into the back yards. Road closed at B/24 th streets. Need to keep people out of the area (shelters?).	Request PW barricade the area. Will any streets be closed? Request boats.

#	Controller	Involved	Technology	Inject	Expected Action Supplemental Information for Controller
164	EM	P,U	Phone Radio	EOC EM calls back CSU: Get the photos and contact information together regarding the 140 students. EOC will advise where to bring them shortly.	<u>Optional build:</u> EOC contacts DMORT leader: would you want these identification materials brought to your location? DMORT leader indicates affirmatively. As time transpires, you can have frantic parents calling media and P,F,EMS wanting to know where children are. As bodies are identified, CSU will have to open an information center for parents to include a hotline as well as a physical meeting site on campus.
165	PW	PW	Radio	Report Public Works Unified Commander to EOC PW Operations: Leaking Cyclohexylamine running down railroad drainage ditches, west to east, towards river. Need to set up a number of dikes to intercept flow. Also in county!	What are we to do with all the contaminated diking material when clean-up starts?
166	EPA	PW	Radio	EPA Official calls EOC Public Works Official: EPA wants to know what PW is doing to interrupt hazardous material flow in drainage ditches which flow to river.	

167	F	F	Radio	<p>Report Unified Fire Commander to EOC Fire Operations: Hydrogen Peroxide Cars 39 and 40 do not appear to be leaking. The LPG car next to the hopper has had its protective dome assembly ripped off, and the relief valve is damaged. There is a slight vapor release coming from the dome area of Car 37 (an LPG car).</p>																
168	F	F	Radio	<p>Report Unified Fire Commander to EOC Fire Operations: Car 50 contains Parathion but does not appear to be leaking; it appears to have suffered some physical damage.</p>																
169	P	P	Radio	<p>Report Unified Police Commander to EOC Police Operations: Several residents are refusing to evacuate. What should we do? We also need additional police personnel for traffic control and notification.</p>																
170	EMS,	EMS		<p>Report Unified EMS Commander to EOC EMS Operations: Received 15 ambulatory victims from cars 1-2-3; one fatality in car 3.</p>	<table> <thead> <tr> <th>Totals for Incident</th> <th>Found</th> <th>Remain</th> </tr> </thead> <tbody> <tr> <td>60 minor (green)</td> <td>45</td> <td>15</td> </tr> <tr> <td>58 delayed (yellow)</td> <td>25</td> <td>33</td> </tr> <tr> <td>20 fatalities (black)</td> <td>8</td> <td>12</td> </tr> <tr> <td>2 live but trapped (red)</td> <td>0</td> <td>2</td> </tr> </tbody> </table> <p>Controller Note: Victim count to date</p>	Totals for Incident	Found	Remain	60 minor (green)	45	15	58 delayed (yellow)	25	33	20 fatalities (black)	8	12	2 live but trapped (red)	0	2
Totals for Incident	Found	Remain																		
60 minor (green)	45	15																		
58 delayed (yellow)	25	33																		
20 fatalities (black)	8	12																		
2 live but trapped (red)	0	2																		
171	P	P	Radio	<p>Police: On-scene police are advised to obtain the names and addresses of the individuals that refuse to leave but not to waste time or staff resources trying to convince them to leave.</p>																

#	Controller	Involved	Technology	Inject	Expected Action Supplemental Information for Controller
172	F	F	Radio	Report Unified Fire Commander to EOC Fire Operations: Fishy odor and vapor cloud getting heavier in this area. Suggest we increase the evacuation area. Vapors seem to be heading north/northeast into the city. Need shelter locations and more transportation vehicles.	Controller Note: Evacuations already may have been started. If so, begin identifying numbers of residents being evacuated. Request additional resources to assist in alerting and evacuating residents. Request more SCBA. Coordinate EMS requests with EMS controller.
173	M	PIO	Radio	Media calls EOC PIO: What is the current situation at train derailment?	
174	CS	CS	Phone	Several parents call Public Health: Concerned about the illness at Central City Jr. High school. What is it? What caused it? Who's responsible? Is the school safe to send my kids too?	
175	CS	CS	Phone	Citizen calls EOC School Representative: My son goes to McNamara High School and knows the boy that died; he had classes with him and played on the soccer team with him. Is he at risk of getting meningitis? Is there anything I can do to ensure his safety? Is there a vaccine?	PIO: Answer parents' questions. Have PIO write an update about this norovirus outbreak, working in Epi-X, and continuing actions of local and state PH to stop the spread of this outbreak. As to the answer to the question about whether a vaccine exists for meningitis: There is a vaccine to help prevent meningococcal disease. The vaccine is routinely recommended for all 11 through

					<p>18 year olds. Kids should get the first dose of this vaccine, known as the meningococcal conjugate vaccine (MCV4), at their 11-12 year old check-up. Now, teenagers are recommended to get a booster dose at age 16.</p> <p>Unfortunately, vaccination programs are extremely difficult to manage during the middle of an existing outbreak (and this area now has <u>two</u> concurrent outbreaks—one of meningitis and one of norovirus). However, treatment with a course of antibiotics is commonly done, and if started early is usually very effective.</p>
176	EPM	EPM	Phone	<p>Local Rad Volunteer calls Rad Officer in the EOC: Recommends calling in feds because of the uranium hexafluoride (fissile > 1% ur-235) on site. Are we doing any monitoring?</p>	
177	CS	F	Phone	<p>School nurse at Central City Jr. High school calls fire dept.: Trying to get in touch with Tom Allison. His son became violently ill at school and had to be taken to the hospital. I tried calling his home, but I couldn't reach anyone. I'm calling the emergency number list for his son, Robert Allison.</p>	
178	CS	PW	Phone	<p>Citizen calls Public Works dispatch: Reports a bad smell from a drainage inlet (thinks something died in the pipe). Could you check it out? W and 18th Streets.</p>	

#	Controller	Involved	Technology	Inject	Expected Action Supplemental Information for Controller
179	P	P	Radio	Sheriff's Rep at derailment: Requests additional units to assist in evacuation north of derailment scene. Some of the area is sparsely populated, and we will have trouble notifying everyone!	
180	CS	P	Phone	Citizen calls Police Dispatch: Trapped in home rising water at J and 6 th Streets (black house with red shutters). Woman in wheel chair: George and Martha Fishback.	
181	EMS	EMS	Phone	Hospital Rep calls EOC EMS Operations: Central City Hospital needs additional EMTs to assist and relieve emergency room personnel!	
182	G	G	Phone	Call to EOC EPM: Has a local emergency been declared? What authority does this declaration give local policymakers?	
183	M	M	Phone	Interview appropriate City Officials: EOC Manager, Fire Branch, etc. concerning the train derailment!	
184	P	P	Phone	CCPD/LCSD report: Sightseers beginning to accumulate around derailment. Need additional personnel!	

185	CS	PW	Phone	Call to Public Works Dispatch: Citizen reports power lines down at 11 and 20 th Streets; need assistance!	
186	M	M	Phone	Media calls EOC PIO: Writing to confirm governor's daughter on train derailment!	
187	CS	P	Phone	Call to Police Dispatch: Citizen reports large amount of debris under the 30 th Street Bridge, crossing the Roaring River. Could someone check it out?	
188	P	P	Phone	Call to Police Dispatch: What are we doing about the prison (A/23 rd Streets) calls from warden? Are we in any danger?	
189	P	P	Radio	Prison Warden calls Police Chief in EOC: We are considering activating its evacuation plan.	As a first step, the warden is immediately calling back 25 of the total 200 guards. This is the equivalent of an extra half of a shift. The prison has a four platoon system for normal operations with 50 guards per shift.
190	CS	ALL	Radio	Earth slide destroys two homes on SR-5, 7 miles north of Harvest Junction. Road blocked to gold mine. Response needed by Public Works, Fire, EMS, and Sheriff's units. 2 DOA, 2 injuries!	
191	CS	ALL	Radio	Report low areas accumulating water in Central City: T/6 th Streets; T/3 rd Streets; T/10 th Streets.	
192	CS	CS	Phone	Calls Logistics Section: Volunteer with a boat wants to know where he should go to help out G/1 st .	

#	Controller	Involved	Technology	Inject	Expected Action Supplemental Information for Controller
193	CS	P	Phone	Call from manager of the Highland Park Senior Citizen Center: K/10 th Streets - 17 story building! High water.	
194	CS	ALL	Phone	Alice's Day Care Center (F/20 th)	Controller Note: The following incidents will be inserted at the appropriate time based upon the evacuation order. Calls can be made from the following facilities, which should be in or around the evacuation area.
195	CS	ALL	Phone	Lower Allen Nursing Home (G/23 rd)	
196	CS	ALL	Phone	Food City Warehouse (G/24 th)	
197	CS	ALL	Phone	Christian School Church (G/18 th)	
198	CS	ALL	Phone	Overlee Cooperative Preschool (F/22 nd)	
199	CS	ALL	Phone	Water Chapel School (J/28 th)	
200	CS	ALL	Phone	Liberty County Prison (A/23 rd)	

201	CS	ALL	Phone	Revco Drug Store (C/28 th)																
202	CS	ALL	Phone	Shell Oil (Bulk Fuel Storage at F/24 th Streets)																
203	CS	ALL	Phone	Call to Logistics Section: Levy Brother Foods offers food etc. to response personnel on the scene at the derailment.																
204	ALL	PH		PH uses Health Alert Network (HAN): Notify all long-term care facilities at or near the proposed evacuation area (including the Lower Allen Nursing Home) to prepare for evacuation.																
205	EMS	EMS	Radio	Report Unified Fire Commander to EOC Fire Operations: Received two victims, delayed; one fatality from car 4.	<table border="1"> <thead> <tr> <th>Totals for Incident</th> <th>Found</th> <th>Remain</th> </tr> </thead> <tbody> <tr> <td>60 minor (green)</td> <td>45</td> <td>15</td> </tr> <tr> <td>58 delayed (yellow)</td> <td>32</td> <td>26</td> </tr> <tr> <td>20 fatalities (black)</td> <td>11</td> <td>9</td> </tr> <tr> <td>2 live but trapped (red)</td> <td>0</td> <td>2</td> </tr> </tbody> </table> <p>Controller Note: Victim count to date</p>	Totals for Incident	Found	Remain	60 minor (green)	45	15	58 delayed (yellow)	32	26	20 fatalities (black)	11	9	2 live but trapped (red)	0	2
Totals for Incident	Found	Remain																		
60 minor (green)	45	15																		
58 delayed (yellow)	32	26																		
20 fatalities (black)	11	9																		
2 live but trapped (red)	0	2																		
206	F	F	Radio	Report Unified Fire Commander to EOC Fire Operations: Chlorine Car 31 appears to be leaking some vapor from its safety relief valve. Fire is still slightly impinging on the car and may have activated the safety relief valve. It does not appear to be a major leak at this time; however, a small vapor cloud is developing and moving toward the city. Continuing to cool the car. Leak in diesel car seems to have stopped. Making progress on the fire.	<p>Controller Note: Keep the following items in mind when we are evacuating for our hazmat incident!</p> <ul style="list-style-type: none"> • What arrangements are being made to transport evacuees? • Transportation buses...PW • What shelters have been opened? • Have evacuation areas been disseminated via the media? • Safety of PW, FD, LE, etc. <p>Do we have time to evacuate? Should areas of the city consider in-place sheltering?</p>															

#	Controller	Involved	Technology	Inject	Expected Action Supplemental Information for Controller
207	EMS	EMS	Radio	Report Unified EMS Commander to EOC EMS Operations: Received 15 additional ambulatory victims from cars 1-2-3. They are all green tags and will go to the minor treatment area.	Totals for Incident Found Remain 60 minor (green) 60 0 58 delayed (yellow) 32 26 20 fatalities (black) 11 9 2 live but trapped (red) 0 2 Controller Note: Victim count to date.
208	F	F	Radio	Report Unified Police Commander to EOC Police Operations: Some residents are still refusing to evacuate. Do we have a mandatory evacuation in effect? Many residents are complaining of eye irritations and dizziness.	
209	F	PW,	Radio	Report Unified PW Commander to PW Fire Operations: State DER official recommends moving the radioactive containers with a large crane. At this point, we do not think this is a wise tactic. Requesting a technical specialist report for advice.	
210	PH	PH	Phone	Report Unified PW Commander to PW Fire Operations: Public Health Official disagrees with State DER representative about moving containers.	
211	EMS	FMS	Radio	Report Unified EMS Commander to EOC EMS Operations:	Totals for Incident Found Remain 60 minor (green) 60 0

				Received two victims, delayed, and one fatality from car 5.	58 delayed (yellow) 34 24 20 fatalities (black) 12 8 2 live but trapped (red) 0 2 Controller Note: Victim count to date
212	EMS	EMS	Radio	Report Unified EMS Commander to EOC EMS Operations: Received three victims, serious; and one DOA from car 2.	Totals for Incident Found Remain 60 minor (green) 60 0 58 delayed (yellow) 37 21 20 fatalities (black) 13 7 2 live but trapped (red) 0 2 Controller Note: Victim count to date
213	PH	PH	Radio	Report from PH: Disaster Medical Assistance Team (DMAT) arrives on-scene. Immediately begins working with EMS in providing care to the many injured victims.	
214	F	F	Radio	Report Unified Fire Commander to EOC Fire Operations: Cyclohexylamine leak has been slowed considerably. Leak has been contained; no more products are going into the drainage ditch. LPG leak seems to have slowed down somewhat, but it is still leaking very slightly. Chlorine car leak is about the same as it was.	
215	F	F	Radio	Report Unified Fire Commander to EOC Fire Operations: Fire around the diesel tank car has diminished significantly. Automobile cars have been extinguished, but the hopper car is still burning. We are still dispersing a slight LPG leak. The chlorine car safety relief valve seems to have reseated itself.	

#	Controller	Involved	Technology	Inject	Expected Action Supplemental Information for Controller															
216	EMS	EMS	Radio	Unified EMS Commander to EOC EMS Operations: Received 2 victims that will require transport to the hospital from car 6. They are in triage with an unknown status.	<table> <thead> <tr> <th>Totals for Incident</th> <th>Found</th> <th>Remain</th> </tr> </thead> <tbody> <tr> <td>60 minor (green)</td> <td>60</td> <td>0</td> </tr> <tr> <td>58 delayed (yellow)</td> <td>39</td> <td>19</td> </tr> <tr> <td>20 fatalities (black)</td> <td>13</td> <td>7</td> </tr> <tr> <td>2 live but trapped (red)</td> <td>0</td> <td>2</td> </tr> </tbody> </table> Controller Note: Victim count to date	Totals for Incident	Found	Remain	60 minor (green)	60	0	58 delayed (yellow)	39	19	20 fatalities (black)	13	7	2 live but trapped (red)	0	2
Totals for Incident	Found	Remain																		
60 minor (green)	60	0																		
58 delayed (yellow)	39	19																		
20 fatalities (black)	13	7																		
2 live but trapped (red)	0	2																		
217	F, EMS	F,EMS	Radio	Report Unified EMS Commander to EOC EMS Operations: Inject: Received three victims, delayed, and a fatality from car 3.	<table> <thead> <tr> <th>Totals for Incident</th> <th>Found</th> <th>Remain</th> </tr> </thead> <tbody> <tr> <td>60 minor (green)</td> <td>60</td> <td>0</td> </tr> <tr> <td>58 delayed (yellow)</td> <td>42</td> <td>16</td> </tr> <tr> <td>20 fatalities (black)</td> <td>14</td> <td>6</td> </tr> <tr> <td>2 live but trapped (red)</td> <td>0</td> <td>2</td> </tr> </tbody> </table> Controller Note: Victim count to date	Totals for Incident	Found	Remain	60 minor (green)	60	0	58 delayed (yellow)	42	16	20 fatalities (black)	14	6	2 live but trapped (red)	0	2
Totals for Incident	Found	Remain																		
60 minor (green)	60	0																		
58 delayed (yellow)	42	16																		
20 fatalities (black)	14	6																		
2 live but trapped (red)	0	2																		
218	F,EMS	F,EMS	Radio	Report Unified EMS Commander to EOC EMS Operations: Received three victims, serious, delayed from car 4.	<table> <thead> <tr> <th>Totals for Incident</th> <th>Found</th> <th>Remain</th> </tr> </thead> <tbody> <tr> <td>60 minor (green)</td> <td>60</td> <td>0</td> </tr> <tr> <td>58 delayed (yellow)</td> <td>44</td> <td>14</td> </tr> <tr> <td>20 fatalities (black)</td> <td>14</td> <td>6</td> </tr> <tr> <td>2 live but trapped (red)</td> <td>0</td> <td>2</td> </tr> </tbody> </table> Controller Note: Victim count to date	Totals for Incident	Found	Remain	60 minor (green)	60	0	58 delayed (yellow)	44	14	20 fatalities (black)	14	6	2 live but trapped (red)	0	2
Totals for Incident	Found	Remain																		
60 minor (green)	60	0																		
58 delayed (yellow)	44	14																		
20 fatalities (black)	14	6																		
2 live but trapped (red)	0	2																		

219	F, EMS	F,EMS	Radio	<p>Report Unified EMS Commander to EOC EMS Operations: Received two victims, delayed, from car 2.</p>	<table> <tr> <td>Totals for Incident</td> <td>Found</td> <td>Remain</td> </tr> <tr> <td>60 minor (green)</td> <td>60</td> <td>0</td> </tr> <tr> <td>58 delayed (yellow)</td> <td>47</td> <td>11</td> </tr> <tr> <td>20 fatalities (black)</td> <td>15</td> <td>5</td> </tr> <tr> <td>2 live but trapped (red)</td> <td>0</td> <td>2</td> </tr> </table> <p>Controller Note: Victim count to date</p>	Totals for Incident	Found	Remain	60 minor (green)	60	0	58 delayed (yellow)	47	11	20 fatalities (black)	15	5	2 live but trapped (red)	0	2
Totals for Incident	Found	Remain																		
60 minor (green)	60	0																		
58 delayed (yellow)	47	11																		
20 fatalities (black)	15	5																		
2 live but trapped (red)	0	2																		
220	M	F	Phone	<p>Media call to EOC Fire Operations: What is being done or what can be done to control/contain chlorine vapors?</p>	<p>If we have a toxicologist and/or at least one hazmat specialist in the class, they need to be called constantly for information on the chemicals (that will keep them from calling us).</p>															
221	M	M	Phone	<p>Media calls EOC Fire Operations: Want to access train derailment area to film chlorine leak and interview workers; can you clear it with Unified Command.</p>																
222	EMS	EMS	Radio	<p>Report Unified EMS Commander to EOC EMS Operations: Request dry clothes and some relief for the paramedics and EMTs. They will all require decon.</p> <p>The fishy odor in the derailment area has been reduced significantly. Running low on medical supplies. Still have people trapped in the wreckage and the surgical team will need relief and decon.</p>																
223	G	G	Phone	<p>Governor's Office Calls EOC EPM: Requesting information on daughter and a briefing every 5 minutes!</p>																

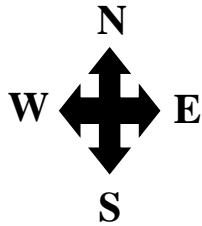
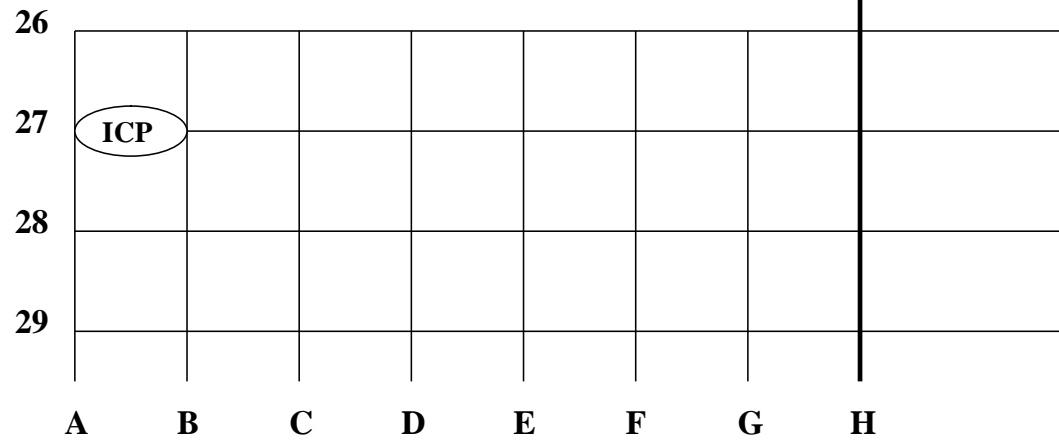
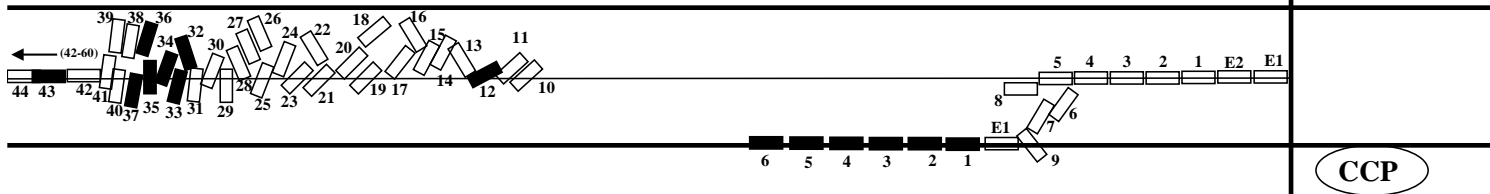
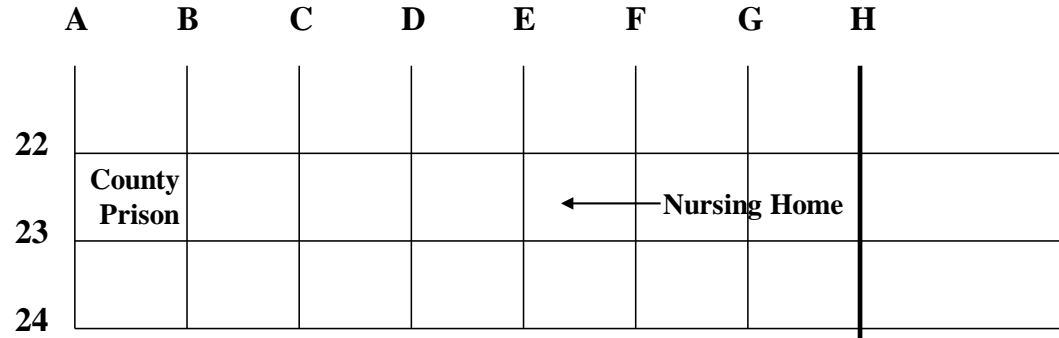
#	Controller	Involved	Technology	Inject	Expected Action Supplemental Information for Controller
224	M	M	Phone	Calls PIO TV Station (WLOX-TV): Wants to send crew into the flooded area along Swatera Creek!	
225	PW	PW	Phone	Call to EOC Public Works: Field crew wants to know if they can clear debris on private property at N/6 th Sts.	Policy decision. Should have been put in earlier.
226	F	F	Phone	Call EOC Fire Operations: What are we going to do about the radioactive cylinders? State DER recommends moving them with a large crane as soon as possible.	
227	PW	PW	Phone	Call EOC Public Works: Power outage: sewer pre-treatment facilities backup generator is out. Could you send a crew? Z/24 th Streets.	
228	CS	PW	Phone	Call EOC Public Works Dispatch: Citizens report signals causing traffic problems at Z/20 th and X/30 th Streets!	
229	M	M	Phone	Call to EOC PIO: Rumor gets started that if the UF6 containers are "broken" we will have some type of nuclear explosion! Controller Note: Information Update.	Answers the question as follows: No; UF6 containers, even if seals are broken, will not cause a nuclear explosion. However, there would be increased radiation in the immediate area. PIO confers with F/HM/PH and contacts media with a reasoned response.

230	EMS	EMS	Phone	Calls to EOC EMS Operations: Hospitals report full capacity! Need to consider alternate transport facilities.	PH is already working on this issue; however, some hospitals may have to step up diversion of patients. Will let EMS know as soon as a decision is reached.
231	CS	EMS	Phone	Call to Logistics: Shelter managers report the need for more medical assistance. Many persons have minor injuries! Could we get some additional nurses?	
232	CS	CS	Phone	Call to Logistics: Shelter Managers/Red Cross/Gov't need to make decisions on long-term sheltering. Obvious that many citizens will not be returning to homes for a while!	
233	CS	CS	Phone	Call to Logistics: Shelter managers report that evacuees want to make phone calls. Can we get some additional lines installed?	
234	CS	P, EMS	Phone	Child, home by himself, calls Police Dispatch: I live north of the rail tracks at B/23 rd Streets. There is smoke in my neighborhood; am I okay here at home?	
235	CS	P	Phone	Inject: Elderly man calls Police Dispatch: Need transportation to evacuate from home. Don't have a car and can't find anyone to take me! My home is located north of the rail tracks. Name and location: E/23 rd Streets.	
236	PH	PH,CS, M	Phone	Public Health: Determines the illness at Central City Jr. High school to be a norovirus. Information contained in tab #5. Appropriate measures are being taken.	

#	Controller	Involved	Technology	Inject	Expected Action Supplemental Information for Controller
237	PH	PH	Phone Fax	Public Health: ERROR: This inject (that PH has just now determined that there is a norovirus at CCJHS) is incorrect. The norovirus problem was determined quite awhile ago based on symptomology alone (see Original Injects # 21 and #39 [twins have norovirus]).	
238	Cs	P	Phone	Elderly woman calls EOC Planning Section: Need transportation assistance out of area! Have tried to call my son and can't reach him! Home is located north of the rail yards in the county.	
239	CS	EPM	Phone	Elderly man calls EOC: Need transportation to a shelter. My house is near the train accident! What should I do? Name/location: E/23 rd Streets.	
240	CS	CS	Phone	Citizen calls Logistics: My mother lives in a small house up near the rail yards in central city; unable to reach her by phone! How can I determine if she is okay? I understand the area is evacuated. Name/location: B/27 th Streets.	

241	CS	CS	Phone	Citizen calls Logistics: My parents live in a small house on A/27 th Streets in Central City, near the rail tracks. Unable to reach them by phone! How can I determine if they are okay? I understand that area is evacuated due to a train derailment.	
242	CS	CS	Phone	Citizen calls Police Dispatch: My parents live in a home north of the railroad tracks in Liberty County; unable to reach them by phone! How can I determine if they are okay?	
243	M	P	Phone	Media call to Law Enforcement: Can you tell us which portions of the county are affected by the train derailment? Any reports of injuries in the county?	
244	CS	CS	Phone	Citizen calls Logistics: Elderly woman wants to bring her pet poodle into a shelter. Is refused, becomes irate, etc. Negotiate a solution with the Red Cross officials.	
245	CS	CS	Phone	Citizen calls Logistics: Shelter manager needs to be relieved (has had a death in the family). When can you get a replacement out here?	

Train Plot Plan



Train Consist

GA&P TRAIN #113 (3 LOCOMOTIVES/66 CARS)

Car Numbers	Contents	Car Type
CARS 1-6:	GENERAL CARGO	BOX
CARS 7-9:	CRUSHED LIMESTONE	OPEN
CARS 10-11:	AUTOMOBILES	CAR CARRIER, COVERED
CARS 12-13:	CYCLOHEXYLAMINE (2357)	#111
CARS 14-18:	DRY CEMENT	BOX
CARS 19-23:	COAL	OPEN
CARS 24-28:	FROZEN FOOD	REFRIGERATION
CARS 29-30:	PAPER PRODUCTS	BOX
CARS 31-32:	CHLORINE	#1017
CAR 33:	DIESEL FUEL	#111
CARS 34-35:	AUTOMOBILES	CAR CARRIER, COVERED
CAR 36:	PLASTIC PELLETS	HOPPER
CARS 37-38:	LPG (1075)	#105
CARS 39-40:	HYDROGEN CHLORIDE (1050)	#105
CARS 41-42:	ETHYLENEIMINE, INHIBITED	#131P
CAR 43:	URANIUM HEXAFLUORIDE (2977)	OPEN, FLATBED
CARS 44-45:	PLASTIC PELLETS	HOPPER
CARS 46-47:	CRUSHED LIMESTONE	OPEN
CARS 48-49:	COAL	OPEN
CAR 50:	PARATHION (2783)	#111
CARS 51-56:	PAPER PRODUCTS	BOX
CARS 57-60:	AUTOMOBILES	CAR CARRIER, COVERED
CARS 61-66:	GENERAL CARGO	BOX

Placement of Freight Train Cars

Car Numbers	Description
E1, E2	On center track near I Street. On track with no visible damage.
1-5	Attached to engines. On track with no visible damage.
6	Car laying sideways over center track. Front of car facing south, southwest.
7, 8	Off the tracks between the center and south tracks. They are resting on their wheels side by side, front to back. Other than off the track, no visible damage.
9	Off the tracks. The rear half of the car is across the south tracks. Considerable damage evident on the side hit by the passenger car engine.
10, 11	Located at 25 th (the railroad tracks) and A Streets. Lying across center track, side by side front to back.
12	Laying on its side, partly on top of southernmost portion of car 13. The front of the car is towards the center tracks. The rear of the car is resting on top of and near the edge of car 13 such that if it would fall on its top, belly up.
13	Laying across center track in front of car 14.
14	Off track, at a 45 degree angle to car 13, mostly north of center track.
15	Off track, no fire. Parallel to car 14 north of center track.
16	Off track, no fire. At 90 degree angle to car 16.
17	Off track, no fire. Across center track at 90 degree angle to car 16.
18	Off track, no fire. Between north and center tracks, in front of and parallel to car 20.
19	Off track, no fire. South of center tracks, next to and parallel to car 20.
20	Off track, no fire. North of car 19 and parallel.
21	Off track, no fire. At 45 degree angle to track. Centered on track.
22	Off track, no fire. North of track at 90 degree angle with car 21.

- 23 Off track, no fire. Across center track. At 90 degree angle to car 21.
- 24 Off track, no fire. North of track parallel to car 23.
- 25 Off track, no fire. Across center track at 45 degree angle.
- 26 Off track, no fire. Completely off track at 45 degree angle.
- 27 Off track, no fire. South of and parallel to car 26.
- 28 Off track, no fire. South of and parallel to car 27.
- 29 Off track, on fire. Centered on center track, and at 90 degree angle to track.
- 30 Off track, on fire. Across center track at 45 degree angle.
- 31 Lying at 45 degree angle to track parallel to car 30. The majority of car is south of the track.
- 32 At 90 degree angle to car 33. Exposed to fire, impingement problem.
- 33 Smoke and fire, diesel fuel running from gouge on side, will eventually stop late in exercise. Perpendicular to car 32.
- 34 Smoke and fire eventually extinguished. Parallel to car 33.
- 35 Smoke and fire eventually extinguished. Center on the track and at 90 degrees to the track.
- 36 Off track to the north at a 45 degree angle to track. Hopper car on fire. Plastic pellets burn throughout the exercise in a cyclical fashion, high fire, water applied, fire goes down, fire breaks loose again and burns high. The fire is contained inside the hopper car.
- 37 LPG tanker car eventually gets minor leak. Slight vapor release, protective dome assembly ripped off. Most of the car is to the south of the track at a 45 degree angle.
- 38 Off track. Not leaking. North of track at 45 degree angle to the track.
- 39 Physical damage only, no apparent leak. Off track, north of track, parallel to car 38.
- 40 Physical damage only; no apparent leak. Off track, south of track, in-line with car 39.

- 41 Physical damage only; no leak apparent. Off track. South of track. In line with car 39.
- 42 Car off track. Farm equipment spilled. Centered on track at 45 degree angle to track.
- 43 Car on center of track with no apparent damage.
- 44 Car on track. Two thirty foot long Uranium Hexafluoride cylinders have broken loose and are lying on the ground.
- 45-66 Car on center of track with no apparent damage.

MSDS

- Cyclohexylamine
- Chlorine
- Diesel Fuel
- Hydrogen Chloride
- Ethyleneimine
- Uranium Hexafluoride
- Parathion