



# TARGET

## AUDIO PRODUCTS

Consumer Price List  
January 1, 2020

## TARGET Equipment Racks

### ESV 90



#### Description

36" tall (90 cm) equipment rack with 3 shelves. Total 6 shelf capacity.  
**Includes:** 4 rack risers, 3 CS shelves, screws, instructions, logo, hex wrench. 2 Boxes/71 lbs.

#### Options

**Shelves:** Add up to 3 extra shelves.

Also supports IS shelves

#### Recommended Accessories:

- ESV-CB Caster kit
- ESV-SB floor spike kit
- Bling thing 1.0 nickel floor spikes  
(can only be used with ESV-SB)

#### Price

**Retail:** \$1295

### ESV 60



#### Description

24" tall (60 cm) equipment rack with 3 shelves. Total 5 shelf capacity.  
**Includes:** 4 rack risers, 3 CS shelves, screws, instructions, logo, hex wrench. 2 Boxes/58 lbs.

#### Options

**Shelves:** Add up to 2 extra shelves.

Also supports IS shelves

#### Recommended Accessories:

- ESV-CB Caster kit
- ESV-SB floor spike kit
- Bling thing 1.0 nickel floor spikes  
(can only be used with ESV-SB or ESV-CB)

#### Price

**Retail:** \$1095

### CS Shelf



#### Description

Add extra standard shelves to your ESV series equipment rack.  
**Includes:** CS shelf frame, MDF shelf insert. 11 lbs.

#### Price

**Retail:** \$219

### IS Shelf



#### Description

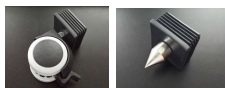
Special heavy isolation shelf for ESV racks. Steel frame is heavier, MDF insert is thicker and is supported by 4 small isolation spikes. Can be used anywhere in the rack. 16 lbs.

**Includes:** IS shelf frame, MDF shelf insert, 4 isolation spikes

#### Price

**Retail:** \$329

### Caster / Spike Sets



#### Description

Add 4 spikes or 4 casters to the bottom of the rack risers.  
**Includes:** Threaded riser inserts and casters or spikes.

#### Options

Specify:  
 ESV-SB for Spike Base  
 ESV-CB for Caster Base

#### Price

**Retail:** \$100

## VW Wall Mount Shelf



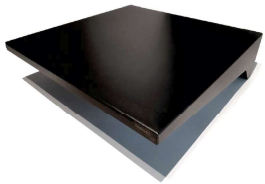
Wall mount shelf designed for supporting turntable. Isolates turntable from footfalls and floor borne vibrations. Similar construction to IS shelf. 23 lbs.

**Includes:** Wall mount bracket + shelf frame, Thick MDF insert, 4 isolation spikes, screws.

**Price**

**Retail:** \$439

## VWL Wall Mount Shelf



Sturdy Painted Metal design with cable management and mounting screws. Supports turntables up to 20 lbs.  
18"w x 16.75" d x 5"h

**Price**

**Retail:** \$125

## AS Amplifier Stand



Single shelf floor stand based on CS shelf construction. Suitable for isolating amplifier or power conditioner from the floor. 11 lbs.  
**Includes:** AS shelf frame and MDF insert, 4 carpet spikes.

**Price**

**Retail:** \$259

### Recommended Accessories

- ASCB Caster kit
- Bling Thing 1.0 nickel plated floor spikes

## ASL Amplifier Stand



Sturdy Painted Metal Design. Base with Bling Thing 1.0 Spikes. 20"w x 16"d x 1"h

**Price**

**Retail:** \$125

## ASCB Caster Kit



4 ea. casters that thread into bottom of AS Amplifier Stand. Fits MB threaded holes. Also fits legacy style speaker stands.

**Price**

**Retail:** \$85

## FHMCB Caster Kit



8 ea. casters with nickel plated cap for original design and current speaker stands.

**Price**

**Retail:** \$195

## Spike Shoes Floor Protectors



Set of 4. Steel cups with rubber isolators protect your floors from spike damage. Effective isolation of components from frequency vibrations. Does not permit movement on glass shelves or tile floors.

**Price**

**Retail:** \$40

## Bling Thing 1.0 Nickel Plated Spike Kit



4 ea. spikes. Fits current AS floor stands for upgraded appearance and old-style Target loudspeaker stands. Also fits AS and ESV-SB kits. Requires blind threaded hole.

**Specifications:**

each spike 0.500" D x 1.250" H

**Price**

**Retail:** \$50

## TARGET Speaker Stands

### MR Maximum Rigidity Speaker Stand



Top quality loudspeaker stand compatible with large and/or heavy stand-mount and bookshelf loudspeakers. 4 vertical risers

**Specifications:**

Top Plate: 0.125" L x 6.0" W x 8.0" D

Base Plate: 0.250" L x 9.0" W x 11.0" D

Weight 31, 35, or 39 lbs. per stand depending on height.

**Includes:** Risers, top and bottom plates, floor spikes, top plate isolation spikes and pads, screws, assembly instructions

**\*\* SOLD AS PAIRS, BUT PACKED AS SINGLES**

2 Boxes / 31 or 35 or 39 lbs. each

#### Options

- Height
  - 20" (MR50)
  - 24" (MR60)
  - 28" (MR70)

#### Price

**MR70** **Retail:** \$659

**MR60** **Retail:** \$639

#### Recommended Accessories

- Custom top plate to mount  
Bryston Mini T Loudspeakers
- Stance Plates
- Bling Thing 2.0

**MR50** **Retail:** \$609

### HR High Rigidity Speaker Stand



Top quality loudspeaker stand compatible with high end stand-mount and bookshelf loudspeakers. 2 vertical risers

**Specifications:**

Top Plate: 0.090" L x 6.0" W x 8.0" D

Base Plate: 0.187" L x 9.0" W x 11.0" D

Weight 18, 20, or 22 lbs. per stand depending on height.

**Includes:** Risers, top and bottom plates, floor spikes, top plate isolation spikes and pads, screws, assembly instructions.

Packed as pairs. 36, 40 or 44 lbs. each

#### Options

- Height
  - 20" (HR50)
  - 24" (HR60)
  - 28" (HR70)

#### Price

**HR70** **Retail:** \$399

**HR60** **Retail:** \$389

#### Recommended Accessories

- Stance Plates
- Bling Thing 2.0

**HR50** **Retail:** 379

### HS Heavy Stand Speaker Stand



Top quality loudspeaker stand compatible with large and/or heavy stand-mount and bookshelf loudspeakers. 1 large riser

**Specifications:**

Top Plate: 0.090" L x 6.0" W x 8.0" D

Base Plate: 0.187" L x 9.0" W x 11.0" D

Weight 14, 15, or 16 lbs. per stand depending on height.

**Includes:** Risers, top and bottom plates, floor spikes, top plate isolation spikes and pads, screws, assembly instructions

Packed as pairs. 36, 40 or 44 lbs. each

#### Options

- Height
  - 20" (HS50)
  - 24" (HS60)
  - 28" (HS70)

#### Price

**HS70** **Retail:** \$329

**HS60** **Retail:** \$319

#### Recommended Accessories

- Stance Plates
- Bling Thing 2.0

**HS50** **Retail:** \$309

## TARGET Speaker Stands

### FS Firm Stand Speaker Stand



High quality loudspeaker stand compatible with small to medium stand-mount and bookshelf loudspeakers. 2 small risers

**Specifications:**

Top Plate: 0.125" L x 6.0" W x 8.0" D

Base Plate: 0.250" L x 9.0" W x 11.0" D

Weight 31, 35, or 39 lbs. per stand depending on height.

**Includes:** Risers, top and bottom plates, floor spikes, top plate isolation spikes and pads, screws, assembly instructions  
Packed as pairs. 24, 25 or 26 lbs.

#### Options

- Height
- 20" (FS50)
- 24" (FS60)
- 28" (FS70)

#### Recommended Accessories

- Stance Plates
- Bling Thing 2.0

#### Price

**FS70** **Retail:** \$319

**FS60** **Retail:** \$309

**FS50** **Retail:** \$299

### Bling Thing 2.0 Nickel Plated Spike Kit



8 ea. spikes plus matching caps. Fits current style speaker stand, and original base plates or Stance Plates.  
Requires threaded through-hole.

**Specifications:**

each spike 0.500" D x 1.250" H plus top covers

#### Price

**Retail:** \$125

### Stance Plates Outriggers



4 ea. (for 1 pair of stands) outriggers increase the footprint of you Target speaker stands by 2 inches in length and width. Can be used with stock spikes or Bling Thing 2.0 Spikes.

**Includes:** Bolts for mounting to base plate

#### Recommended Accessories

- Bling Thing 2.0

#### Price

**Retail:** \$150

### Bryston Mini T Custom Top Plates



Replaces MR speaker stand top plate. Screws onto bottom of Mini T loudspeaker. Same footprint as bottom of loudspeaker. Price includes one pair of top plates

#### Price

**Retail:** \$150

Contact Bryston  
to Order

### Bryston Mini A Custom Top Plates



Replaces standard speaker stand top plate on FS, HS, and HR stands. Same footprint as bottom of loudspeaker. Price includes one pair of top plates. Includes rubber bumpers to isolate speaker

#### Price

**Retail:** \$150

Contact Bryston  
to Order