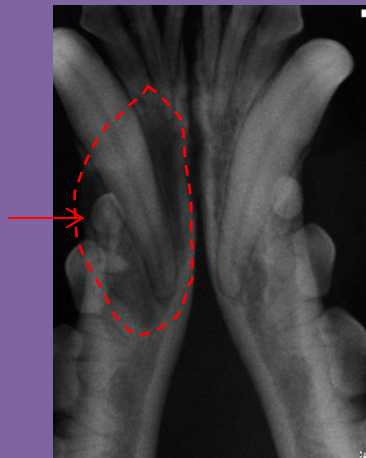


Why are dental radiographs (x-rays) so important?

Dental radiographs allow us to see beneath the gum line where up to 75% of tooth structure lies. By taking full mouth radiographs, we can more accurately diagnose very common diseases. Studies have proven the value of full mouth dental radiography in dog and cat patients regardless of the presence of obvious disease. Common findings using dental radiography include: periodontal disease, tooth resorptions, impacted teeth, retained root fragments, dead teeth, broken tooth roots, and abscessed teeth. We generally recommend a set of full mouth x-rays at 6 months of age with certain breeds in conjunction with spay or neutering or with the first professional dental cleaning. Follow up x-rays will be recommended based on the type and extent of disease present. Without x-rays, most of our patients would suffer in silence with a painful mouth.



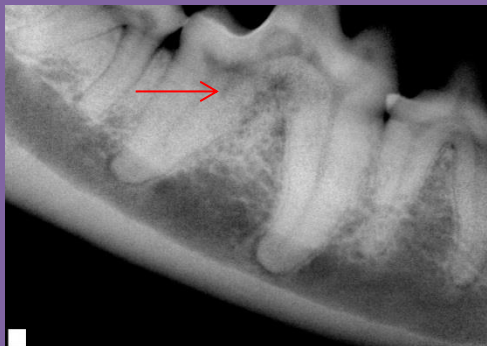
Non-vital teeth



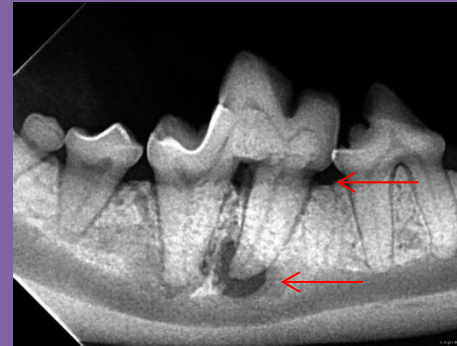
Dentigerous Cyst



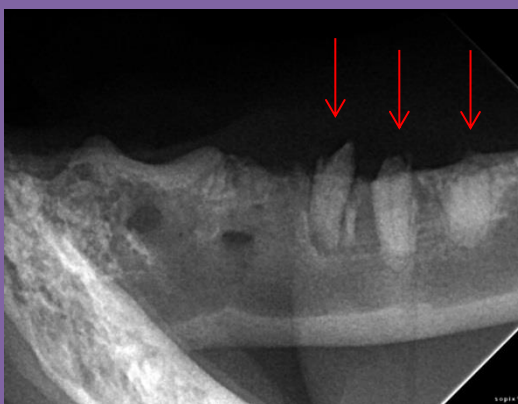
Tooth Resorption - cat



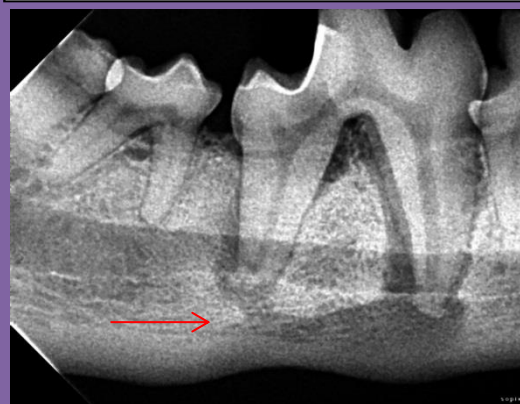
Tooth Resorption - dog



Abnormal tooth development with abscess



Retained tooth roots after supposed full-mouth extractions - cat



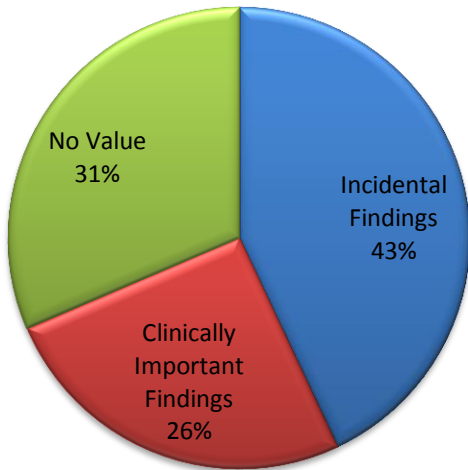
Periodontal and endodontic disease weakening jaw

Full Mouth Dental Radiographs

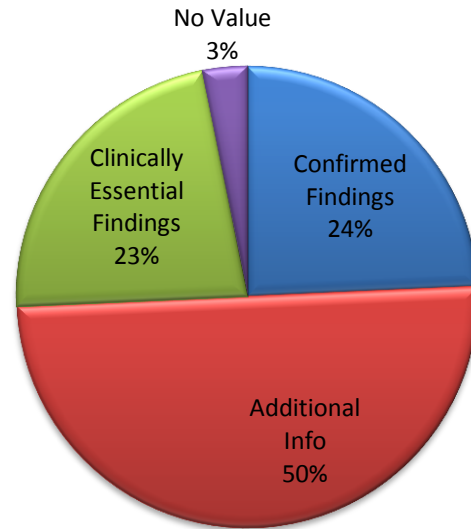
F J Verstraete et al 1998

226 Dogs in study

Dogs Without Lesions

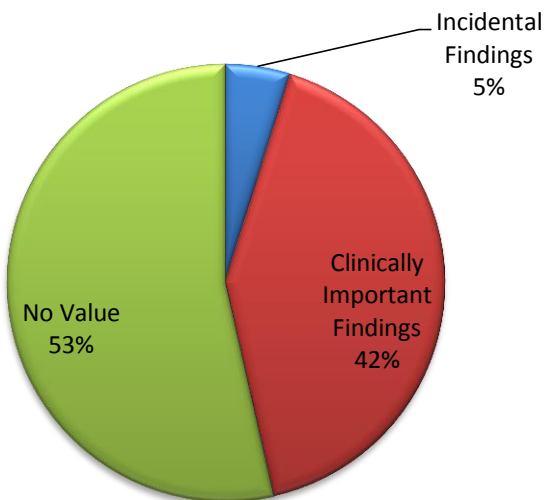


Dogs With Lesions



115 Cats in study

Cats Without Lesions



Cats With Lesions

