

# **OAK HARBOR GARDEN CLUB**

**Presents**



**A National Garden Clubs, Inc.  
Standard Flower Show**

***Friday, May 17, 2019 1:00-4:00 pm***

***Saturday, May 18, 2019 10:00 am-2:00 pm***

***First United Methodist Church***

***Centennial Hall***

***1050 SE Ireland Oak Harbor, WA 98277***

**ADMISSION FREE AND OPEN TO THE PUBLIC**

**Member of**

**Washington State Federation of Garden Clubs, Inc.**

**Pacific Region Garden Clubs, Inc.**

**National Garden Club, Inc.**

## **AFFILIATIONS/PRESIDENTS AND DIRECTORS**

**National Garden Clubs, Inc.**

President: Nancy Hargroves

[gardenclub.org](http://gardenclub.org)

**Pacific Region of National Garden Clubs, Inc.**

Director: Peggy Olin

[www.pacificregiongardenclubs.org](http://www.pacificregiongardenclubs.org)

**Washington State Federation of Garden Clubs**

President: Joyce Lounsbury

[wagardenclubs.com](http://wagardenclubs.com)

**Chuckanut District**

Director: Daphne Ruxton

[chuckanutwa.org](http://chuckanutwa.org)

**Oak Harbor Garden Club**

President: Anne Sullivan

[absullivan@comcast.net](mailto:absullivan@comcast.net)

## **OUR HISTORY**

Ninety-five years ago on October 3, 1923, in Oak Harbor, a group of women organized a civic improvement club. With a fine stand of native oak trees, Smith Park became a memorial to these women who had the block saved for future generations. In August 1946 the club became known as the Oak Harbor Civic Garden Club and in 1947 federated with Washington State Garden Clubs. In 1962 the club changed its name to the Oak Harbor Garden Club. The Club has adopted Hal Ramaley Park in downtown Oak Harbor and maintains other pocket parks in the city.

## TABLE OF CONTENTS

Affiliation .....	2
Table of Contents .....	3
Flower Show Committee .....	4-5
General Rules .....	6-7
Awards .....	7-8
Division I—Horticulture	
Awards .....	8
Rules .....	9
Scale of Points .....	9
Classes .....	10-14
Division—II Design	
Rules .....	15
Scale of Points .....	16
Awards .....	16-17
Classes .....	17-18
Division—III Educational Exhibits	
Rules .....	19
Scale of Points .....	19
Awards .....	19
Classes .....	20
Design Glossary .....	21
Acknowledgements .....	22
Notes .....	23



## FLOWER SHOW COMMITTEE

<b>Co-Chairperson</b>	<b>Sally Karg</b> (360) 675-8484 <a href="mailto:sallykarg@gmail.com">sallykarg@gmail.com</a> <b>Carolyn Bischoff</b> (360) 675-7063 <a href="mailto:bischoffcr@frontier.com">bischoffcr@frontier.com</a> <b>Anne Sullivan</b> (360) 240-0560 <a href="mailto:absullivan@comcast.net">absullivan@comcast.net</a> <b>Carol Goldberg</b> (360) 675-5888 <a href="mailto:frogwoman3@comcast.net">frogwoman3@comcast.net</a>
<b>Design Classification</b>	<b>Sally Karg</b> (360) 675-8484 <a href="mailto:sallykarg@gmail.com">sallykarg@gmail.com</a> <b>Judith Juno</b> 360-675-5866 <a href="mailto:jjuno@frontier.com">jjuno@frontier.com</a>
<b>Design Consultant</b>	<b>Judith Juno</b> 360-675-5866 <a href="mailto:jjuno@frontier.com">jjuno@frontier.com</a>
<b>Design Entries</b>	<b>Carolyn Bischoff</b> (360) 675-7063 <a href="mailto:bischoffcr@frontier.com">bischoffcr@frontier.com</a>
<b>Design Placement</b>	<b>Anne Sullivan</b> 360-240-0560 <a href="mailto:absullivan@comcast.net">absullivan@comcast.net</a>
<b>Educational Exhibits</b>	<b>Carolyn Bischoff</b> (360) 675-7063 <a href="mailto:bischoffcr@frontier.com">bischoffcr@frontier.com</a>
<b>Horticultural Classification</b>	<b>Carol Goldberg</b> (360) 675-5888 <a href="mailto:frogwoman3@comcast.net">frogwoman3@comcast.net</a>
<b>Horticultural Consultant</b>	<b>Kathy Chalfant</b> (360) 679-4641 <a href="mailto:chalfantkd@gmail.com">chalfantkd@gmail.com</a>
<b>Horticultural Entries</b>	<b>Connie Leonhardi</b> (360) 675-6898 <a href="mailto:cwleonhardi@comcast.net">cwleonhardi@comcast.net</a>
<b>Horticulture Placement</b>	<b>Ruth Scrivner</b> (360) 679-0397 <a href="mailto:ruth100@mac.com">ruth100@mac.com</a> <b>Jean Coltrin</b> (360) 675-6102 <a href="mailto:sjcoltrin@gmail.com">sjcoltrin@gmail.com</a>

# GENERAL RULES

<b>Hospitality</b>	To be determined
<b>Judges</b>	<b>Sally Karg</b> (360) 675-8484 <a href="mailto:sallykarg@gmail.com">sallykarg@gmail.com</a>
<b>Photographer</b>	<b>Sally Karg</b> (360) 675-8484 <a href="mailto:sallykarg@gmail.com">sallykarg@gmail.com</a>
<b>Publicity</b>	<b>Anne Sullivan</b> (360) 240-0560 <a href="mailto:absullivan@comcast.net">absullivan@comcast.net</a>
<b>Registrar</b>	<b>Carolyn Bischoff</b> (360) 675-7063 <a href="mailto:bischoffcr@frontier.com">bischoffcr@frontier.com</a>
<b>Schedule Writers</b>	<b>Sally Karg/Carolyn Bischoff/ Anne Sullivan/Carol Goldberg</b>
<b>Signage and Printing</b>	<b>Anne Sullivan</b> (360) 240-0560 <a href="mailto:absullivan@comcast.net">absullivan@comcast.net</a>
<b>Theme Staging</b>	<b>Carolyn Bischoff</b> (360) 675-7063 <a href="mailto:bischoffcr@frontier.com">bischoffcr@frontier.com</a>
<b>Schedule Review</b>	<b>Judith Juno</b> 360-675-5866 <a href="mailto:jjuno@frontier.com">jjuno@frontier.com</a>
<b>Awards/Ribbons</b>	<b>Sally Karg</b> (360) 675-8484 <a href="mailto:sallykarg@gmail.com">sallykarg@gmail.com</a>
<b>Clerks</b>	<b>Anne Sullivan</b> (360) 240-0560 <a href="mailto:absullivan@comcast.net">absullivan@comcast.net</a>
<b>Book of Evidence</b>	<b>Anne Sullivan</b> (360) 240-0560 <a href="mailto:absullivan@comcast.net">absullivan@comcast.net</a>

**Show Theme:** “Broadway Musical Playbill”

**Show Hours:** Friday, May 17, 2019 1:00-4:00 pm  
Saturday, May 18, 2019 10:00 am-2:00 pm

**Eligibility:** Open to all members of NGC, Inc. (hereafter “NGC”) and Washington State Federation of Garden Clubs (hereafter “WSFGC”).

**Entry Times:** Horticulture Division: May 17, 2019 8:00-9:00 am.  
Design and Special Exhibits Divisions: May 17, 2019 9:00-9:50 am.

**Removal Time:** Entries may not be removed before Saturday, May 18 at 2 pm, but must be removed immediately thereafter.

This Flower Show conforms to the standards established by National Garden Clubs, Inc. *Handbook for Flower Shows*, Revised 2017 and revisions in *the National Gardener* magazine which are the authorities for all issues not covered by this Schedule, which is the law of the Show.

**Plant Material:** NO ARTIFICIAL PLANT material is allowed in any division except for staging. Plant material is required in all divisions **with EMPHASIS on fresh material**. Plants on the state conservation list must have been grown by the exhibitor or obtained in a legal manner and so stated. Noxious plants are not allowed in any division. See state conservation website for a complete list. [www.nwcb.wa.gov](http://www.nwcb.wa.gov).

**Classification:** Horticulture entries must pass classification before being placed. Design entries must pass classification before exhibitor leaves the venue. The Classification Chairperson for each division checks exhibits for conformity to the schedule prior to judging. Final determination for conformance is the judges’ responsibility.

**Placement:** The horticulture placement members will place horticulture entries. Placement of designs and special exhibits will be by the exhibitors aided by placement members.

**Judging Time:** This Show will be judged by NGC accredited judges. Judging will be from 10:00 am to 12:00 pm on Friday, May 17, 2019. All judges' decisions are final. Awards may be withheld if not merited. Only **Required Personnel** will be allowed in the venue during judging.

**Required Chairpersons:** Show Co-Chairpersons, Judges Chairperson, Clerks Chairperson, Horticulture, Design, Classification and Special Exhibits Chairperson.

**Responsibility:** The Oak Harbor Garden Club will strive to assure the safety of all exhibits, but assumes no responsibility for loss, damage and/or injury to persons or property. All participants must remove their exhibits, materials, awards and ribbons immediately after 2:00 pm and before 3:00 pm on Saturday, May 18, 2019. Any remaining items will be discarded if not removed by 3:00 pm.

## AWARDS

This is a Standard Show and will be judged by NGC Accredited Judges using the Standard System of Awarding as this System is educational and encourages the highest quality of exhibits. The Standard System of Awarding allows only one first (blue), one second (red) and one third (yellow) to be awarded in each class or sub-class. Honorable Mention (white) may be given to all other meritorious exhibits.

\***First** place exhibits must score 90 or above.

\***Second** place exhibits must score 85 or above.

\***Third place** exhibits must score 80 or above.

\***Honorable** Mention must score 75 or above.

### DIVISION I – HORTICULTURE

#### NGC Top Exhibitor Awards

*(Handbook for Flower Shows, Chapter 6)*

#### General Requirements:

1. All plant materials must be fresh and grown by exhibitor.
2. Exhibit must be a blue ribbon winner scoring 95 or more.
3. All plant material must be identified with their binomial name, giving genus, variety and cultivar, series, patented or common name when available (*Handbook for Flower Shows, Revised 2017, (hereafter "HFS") Chapter 6, III. Classification*).

1. All specimens must be identified as aforementioned to be eligible for a Top Exhibitor Award.
2. Each section must have at least three (3) classes. Eligible classes are designated in the schedule.
3. An award must be withheld if no designated exhibit meets specific requirements for the award.
4. There is no minimum number of exhibits required except that the total number must meet requirements for a Standard Flower Show.

### NGC Top Exhibitor Awards *(Handbook for Flower Shows, Chapter 5)*

**Award of Horticultural Excellence** (Rosette of green, blue and orange ribbons): One award offered to the highest scoring exhibit by an individual in the entire Horticulture Division.

**Arboreal Award** (Rosette of green ribbons): Given for cut or container-grown trees and/or shrubs. Cut specimens may not compete in the same section as container-grown specimens. Cut portions of vines are not eligible. Cut specimens must be no more than 30" in length, include an apical tip, central leader and several nodes.

**Award of Merit** (Rosette of orange ribbons): Given for all cut non-woody specimens, including vines.

**Grower's Choice Award** (Rosette of dark green ribbons): Given for all container-grown plants (single, multiple, self-multiple and combination plantings). Combination plantings never compete with single, multiple or self-multiple container-grown specimens in the same section. Specimens include foliage, flowering fruit or vegetables.

### Washington State Federation of Garden Clubs

Horticulture Division Award

**Betty Belcher Horticulture Award:** This award is offered to the named exhibit judged to be the finest in Division I. An evaluation will be made by the team of judges selecting the winning exhibit. Nominee may apply for the award by submitting a Book of Evidence by April 1, 2020. This nomination is represented by a rosette of green and brown ribbons.

# DIVISION I—HORTICULTURE

## Horticulture Rules

1. Exhibitor may enter more than one exhibit per class or subclass if each is a different genus, species, variety/cultivar, type, size or color.
2. Entry cards will be provided at the April meeting of the Club to be written in pencil or waterproof ink. Out-of-town entry cards will be available on the OHGC and Chuckanut District websites. If printing entry cards from a website, white card stock must be used. Cards will be available at the check-in table on the morning of the show.
3. Clear glass containers for cut specimens will be provided by the Show Committee. Unobtrusive wedging and anchoring are permitted. No foliage is to be visible below the container water line.
4. Classes may be divided or subdivided according to color or variety at the discretion of the Classification Committee or Judges.
5. Plants must have been in exhibitor's possession and care for at least 90 days.

### Horticulture Scale of Points

#### All Cut or Container-Grown Horticulture Specimens and Collections

<b>Conformance (Section Requirements)</b>		<b>5</b>
<b>Plant Identification</b>		<b>5</b>
<b>Peak of Perfection</b>		<b>75</b>
Form	20	
Color	20	
Maturity/Size	20	
Condition/Blemishes	15	
<b>Grooming and Staging</b>		<b>15</b>
Grooming	10	
Staging	5	
<b>Total Score</b>		<b>100</b>

## Section A—The Jersey Boys

### “My Eyes Adored You”

Eligible for the NGC Award of Horticultural Excellence and NGC Award of Merit. (One stem with two attached leaves according to variety and color.)

*TULIPA* (Liliaceae)

**Class 1.** Single

**Class 2.** Double

**Class 3.** Lily-flowered

**Class 4.** Parrot

**Class 5.** Viridiflora

**Class 6.** Any other worthy named tulip according to variety.

## Section B—Oklahoma

### “Out of My Dreams”

Eligible for the NGC Award of Horticultural Excellence and the NGC Award of Merit (One stem) .

*IRIS* (Iridaceae) (Iris)

**Class 7.** *Germanica* hybrids (Bearded iris)

a. Miniature Dwarf (less than 8")

b. Standard Dwarf (8" to 16")

c. Intermediate (16" to 27")

d. Tall (27" to 40")

**Class 8.** *Hollandica* (Dutch hybrids)

**Class 9.** *Sibirica* (Siberian)

**Class 10.** *Douglasiana* and hybrids (Pacific Coast)

**Class 11.** Any other worthy named iris according to variety or cultivar.

## Section C—The King and I

### “Something Wonderful”

Eligible for the NGC Award of Horticultural Excellence and the NGC Award of Merit.

**SPRING FLOWERING BULBS, CORMS OR TUBERS** (One large or three small stems according to variety and color.)

**Class 12.** *Anemone* (Ranunculaceae) (Windflower)

**Class 13.** *Ranunculus* (Ranunculaceae) (Buttercup)

**Class 14.** *Hyacinthus* (Asparagaceae) (Hyacinth)

**Class 15.** *Hyacinthoides* (Asparagaceae) (Scilla)

**Class 16.** *Allium* (Amaryllidaceae) (Onion)

**Class 17.** Any other worthy named spring-flowering bulb, corm or tuber according to variety and color.

**Section D—Pippin**  
“Spread A Little Sunshine”

Eligible for the NGC Award of Horticultural Excellence and the NGC Award of Merit.

**HERBACEOUS PERENNIALS** (One large stem or three small stems according to variety and color.)

**Class 18.** *Aquilegia* (Ranunculaceae) (Columbine)

**Class 19.** *Thalictrum* (Ranunculaceae) (Meadow Rue)

**Class 20.** *Doronicum* (Asteraceae) (Leopard’s Bane)

**Class 21.** *Bellis* (Asteraceae) (Daisy)

**Class 22.** *Dicentra* (Papaveraceae) (Bleeding Heart)

**Class 23.** *Euphorbia* (Euphorbiaceae) (Milkweed, Spurge)

**Class 24.** *Viola* (Violaceae) (Violet)

**Class 25.** *Saxifraga* (Saxifragaceae) (Saxifrage)

**Class 26.** *Myosotis* (Boraginaceae) (Forget-me-not)

**Class 27.** *Pulmonaria* (Boraginaceae) (Lungwort)

**Class 28.** *Primula* (Primulaceae) (Primrose)

- a. Candelabra
- b. Polyanthus (False Oxlip)
- c. *Auricula* (Bear’s Ear)
- d. *Vulgaris* (English)
- e. Any other worthy named primula

**Class 29.** *Trillium* (Melanthiaceae) (Wood Lily)

**Class 30.** Any other worthy named perennial according to variety and color.



**Section E—Anything Goes**  
“Its De-Lovely”

Eligible for the NGC Award of Horticultural Excellence, the NGC Arboreal Award and the WSFGC Marva Lee Peterschick Arboreal Flowering Shrub/Tree Award.

**RHODODENDRONS**

**Class 31.** *Rhododendron* (Ericaceae) (Rhododendron) (One truss)

- a. Red
- b. Pink
- c. White
- d. Purple
- e. Yellow/Peach
- f. Any other worthy named rhododendron according to variety and color.

**Class 32.** *Rhododendron* (Ericaceae) (Rhododendron) (One spray not over 30”)

- a. Red
- b. Pink
- c. White
- d. Purple
- e. Yellow/Peach
- f. Any other worthy named rhododendron according to variety and color.

**Class 33.** *Rhododendron* (Ericaceae) (Deciduous azalea) (One spray not over 30”)

- a. Red
- b. Pink
- c. White
- e. Yellow
- f. Orange
- g. Any other worthy named deciduous azalea

**Class 34.** *Rhododendron* (Ericaceae) (Evergreen azalea) (One spray not over 30”)

- a. Red
- b. Pink
- c. White
- d. Purple
- e. Any other worthy named evergreen azalea

## Section F—Hamilton

### “Blow Us All Away”

Eligible for the NGC Award of Horticultural Excellence, the NGC Arboreal Award and the WSFGC Marva Lee Peterschick Arboreal Flowering Shrub/Tree Award.

#### FLOWERING/FRUITED EVERGREENS/DECIDUOUS TREES AND SHRUBS.

(One branch not over 30” in length according to variety.)

**Class 35.** *Cornus* (Cornaceae) (Dogwood)

**Class 36.** *Malus* (Rosaceae) (Apple)

**Class 37.** *Prunus* (Rosaceae) (Cherry)

**Class 38.** *Chaenomeles* (Rosaceae) (Flowering Quince)

**Class 39.** *Magnolia* (Magnoliaceae) (Magnolia)

**Class 40.** *Camellia* (Theaceae) (Camellia)

a. *C. japonica*

b. Any other worthy named camellia according to variety.

**Class 41.** *Forsythia* (Oleaceae) (Forsythia)

**Class 42.** *Syringa* (Oleaceae) (Lilac)

**Class 43.** *Erica* (Ericaceae) (Heath/Heather)

**Class 44.** *Calluna* (Ericaceae) (Common Heather)

**Class 45.** *Skimmia* (Rutaceae) (Skimmia)

**Class 46.** *Viburnum* (Adoxaceae) (Viburnum)

**Class 47.** *Laburnum* (Fabaceae) (Golden Chain)

**Class 48.** *Cytisus* (Fabaceae) (Broom - Excludes *C. scoparius* “Scotch” Broom)

**Class 49.** Any other worthy named flowering/fruited evergreen/deciduous tree/shrub according to variety.



## Section G—Cabaret

### “Sitting Pretty”

#### INDOOR PLANTS

Eligible for the NGC Grower's Choice Award. Maximum container diameter of 10 inches. Plants may be double-potted, but the pot inside must not be visible. Containers must be subordinate to the featured plant material. No staging provided for hanging containers. Hangers must be removed or elevation provided by exhibitor. Plants must have been in exhibitor's possession and cared for at least 90 days. No multiple or combination plantings.

**Class 50.** Blooming Potted Plant

a. Orchid (*Orchidaceae*) (Orchid)

b. *Saintpaulia* (Gesneriaceae) (African Violets)

c. Any other worthy named blooming indoor plant according to variety.

**Class 51.** Not Blooming Potted Plant

a. Pteridophyte (True Ferns and Relatives)

b. Succulents (Cacti and others)

c. Leafy foliage (Palms and others)

d. Any other other worthy named indoor plant according to variety.

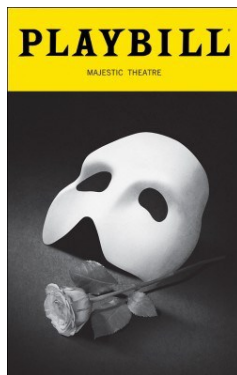


## DIVISION II—DESIGN RULES

### NGC Top Exhibitor Awards

(Handbook For Flower Shows, Revised 2017, Chapter 7)

1. Advanced entries required in all classes and must be received by April 27, 2019. Contact Carolyn Bischoff (360) 675-7063 bischoffcr@frontier.com).
2. A minimum of five classes consisting of four exhibits totaling (20) in all.
3. No section can be eligible for more than one Top Exhibitor Award.
4. All designs must contain fresh plant material unless otherwise stated.
5. No artificial flowers, foliage, fruit or vegetables permitted.
6. No decorative wood is permitted in Section A, Classes 1 and 2.
7. Plant material need not have been grown by exhibitor.
8. An exhibitor may enter as many classes as desired, but only one exhibit per class.
9. Design is the work of one person. If a designer is unable to fulfill their commitment, it is the designer's responsibility to find a replacement exhibitor.
10. Accessories and living plants with roots attached are permitted.
11. Accessory, niche, background, or frame may be provided by exhibitor. If requested, the Committee will provide white niches for exhibitors' use at time of entry.
12. All 72" and 96" tables will be supplied with floor length black cloths.
13. The appropriate Scale of Points as listed in *HFS*, Revised 2017, Chapter 14.
14. All plant material used in the design must be identified on an unlined white card and included with the entry tag. The committee will provide the card if requested.



## Design Scale of Points

All designs judged by the same Scale of Points.

<b>Conformance to All Schedule Requirements</b>		<b>14</b>
Design Type (if applicable)	7	
Remaining requirements divided	7	
<b>Design</b>		<b>48</b>
Design Principles: (Balance, Contrast, Dominance, Proportion, Scale, and Rhythm) are applied to the Design Elements: (Line, Form, Color, Texture, Pattern, Size, Space, and Light). Each Design Principle worth 8 points.		
<b>Selection of Components</b>		<b>8</b>
Creative selection of all components		
<b>Organization of Components</b>		<b>8</b>
Placement of components for design type		
<b>Expression</b>		<b>8</b>
Interpretation of class title or theme through component/s or Design Element/s		
<b>Distinction</b>		<b>14</b>
Marked superiority in techniques and craftsmanship. All components in superior condition and of high quality. Mechanics neat and clean. Design exceptional		
	<b>Total Score</b>	<b>100</b>

## NGC Top Exhibitor Awards

**Award of Design Excellence** (Rosette of gold ribbons): One award may be offered to the highest scoring blue ribbon exhibit in the entire Design Division entered by an individual.

**Designer's Choice Award** (Rosette of purple ribbons): Plant material may be dried, treated dried and/or fresh. Exhibitor has freedom to choose other components within NGC policies.

**Petite Award** (Small rosette of blue and white ribbons): Offered to the most outstanding petite design in a show of otherwise full-sized designs.

**Tricolor Award** (Rosette of red, blue and yellow ribbons): All plant material must be fresh. Non-plant material may be included.



## **WSFGC Top Exhibitor Awards**

**Carolyn Erickson All Fresh Design Award** (Rosette of hot pink ribbons): One award offered for a score of 95 points or more. Fresh plant material must be dominant in the design. Decorative wood is not permitted.

**WSFGC Ellen B. Swenson Flower Arrangement Award** (Rosette of turquoise ribbons): One award offered for a score of 95 points or more.

**WSFGC Judith Juno Petite Award** (Rosette of emerald green and pale peach ribbons): One award offered to the highest scoring blue ribbon petite design.

## **Section A—“Phantom of the Opera”**

All plant material in designs must be fresh.

Eligible for the NGC Tricolor Award and the Carolyn Ericson All Fresh Design Award.

### **Class 1. “Learn To Be Lonely”**

An NGC Grouped Mass Design using all fresh material staged on a 48” wide by 30” deep section of a table with black underlay skirted to the floor.

### **Class 2. “The Music of the Night”**

An NGC Illuminary Design using all fresh material staged on a 48” wide by 30” deep section of a table with black underlay skirted to the floor.

## **Section B—“Fiddler On The Roof”**

Petite Design ranging in size from 3” to 12”.

Designer’s Choice of Plant Material

Eligible for the NGC Petite Award and

The WSFGC Judith Juno Petite Award

### **Class 3. “Matchmaker”**

An NGC Monobotanic Design staged on a 24” wide by 30” deep section of table with black underlay skirted to the floor. If the design is 3” to 6”, it will be displayed on an 8” by 8” black acrylic cube.

### **Class 4. “Wedding Dance”**

An NGC Multi-Rhythmic Design staged on a 24” wide by 30” deep section of table with black underlay skirted to the floor. If the design is 3” to 6”, it will be displayed on an 8” by 8” black acrylic cube.

## **Section C—“The Jersey Boys”**

Designer’s Choice of plant material and other components.

Plant material may be fresh, dried or treated dried.

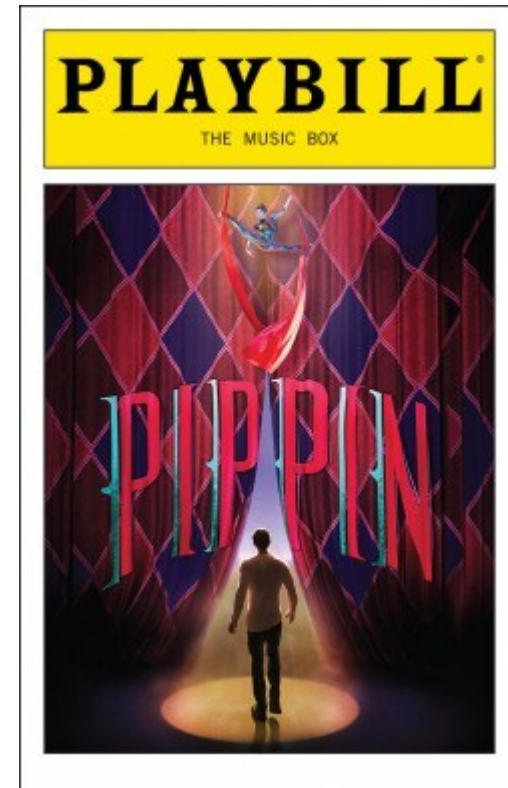
Eligible for the NGC Designer’s Choice Award

### **Class 5. “Let’s Hang On”**

An NGC Designer’s Choice Design staged on a 48” wide by 30” deep section of table with black underlay skirted to the floor.

### **Class 6. “Can’t Take My Eyes Off Of You”**

An NGC Designer’s Choice Design staged on a 48” wide by 30” deep section of table with black underlay skirted to the floor.



## DIVISION III—EDUCATIONAL EXHIBIT RULES

### NGC Top Exhibitor Awards

(Handbook For Flower Shows, Revised 2017, Chapter 8)

1. Exhibit titles and brief descriptions of each subject are listed in the Schedule.
2. Plant material is not required, although NGC encourages the use of plant material where appropriate. No artificial plant material is permitted in an Educational Exhibit.
3. Exhibits are judged by the Education Exhibit Scale of Points, *HFS*, Chapter 14.
4. Exhibits may be the work of more than one individual or organization. However, if a Student Judge or Accredited Judge is seeking exhibiting credit, the work must be done solely by the individual and entered accordingly.
5. A minimum of eighteen square feet surface area is required.
6. Exhibits should convey educational facts quickly and persuasively in an interesting manner. Posted print material should be large enough to read from a distance of three feet.
7. Handout materials are encouraged, but not required.

### Educational Exhibit Scale of Points

<b>Educational Value</b>		<b>60</b>
Interest to viewers	25	
Clear and concise presentation	15	
Adequate educational signs and tags	10	
Conforms to NGC objectives	10	
<b>Staging</b>		<b>20</b>
Craftsmanship, technique.	10	
Distinction	10	
<b>Creativity and Expression</b>		<b><u>20</u></b>
<b>Total Score</b>		<b>100</b>

**NGC Educational Award** (Rosette of brown and white ribbons): One award is offered. A minimum of two educational exhibits designated as eligible must be present. Eligible for the WSFGC Carol Klingberg Educational Award. Staged on 48" wide by 30" deep section of table with black underlay skirted to the floor.

**Exhibit 1. *Porgy and Bess* "Summertime"**. Recognizing Washington bees and their importance in the environment. With an explanation of why bees are in trouble and what we can do to help, including the possibility of a Bee City Certification for the City of Oak Harbor.

**Exhibit 2. *Bells Are Ringing* "The Midas Touch"**. An overview of therapeutic gardening by the cultivation of plants to promote healing and receiving mental and physical health benefits. (See Washington State University Extension Publication FS299E <https://extension.wsu.edu>)

**Exhibit 3. *Little Shop of Horrors* "Grow for Me"**. An overview of how hydrangea flower colors are determined and help for home gardeners to care for them. (See Washington State University Publication FS309E <https://extension.wsu.edu>)

**Exhibit 4. *Ain't Misbehavin* "Spreading Rhythm Around"**. A general guide on how to use organic soil amendments. How to determine how much is enough with an overview of the benefits of amendments and the detriment of using too much. (Washington State Extension FS123E)



## DESIGN GLOSSARY

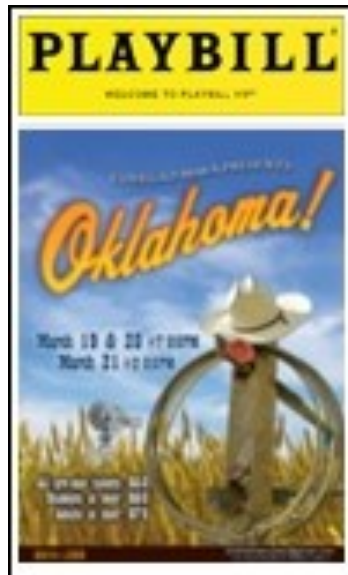
**Designer's Choice:** Complete freedom in selection of all plant material and components with the exception of artificial plant material.

**Grouped Mass:** A mass design of only plant material with radial placement. Like material is grouped and placed next to other different grouped material. Additional plant material may be included, but the proportion of groupings dominate the design. Plant material emanates from one point of emergence.

**Illuminary:** A Creative Design incorporating light(s) for special effect and as an integral part of the design.

**Monobotanic:** A design using multiple parts of the plant(s) of one family or genus. Plants may be stems, blooms, roots, fruit or foliage.

**Multi-Rhythmic:** A Creative Design with emphasis on two or more rhythms in the design with one rhythm dominating. Lines create two or more separate and distinct rhythms, each creating a different pattern and movement unlike the other. Lines may go in any direction, be continuous, interrupted and/or crossed.



## ACKNOWLEDGMENTS

The Oak Harbor Garden Club wishes to thank all of those who participated in the preparations for the show, including planning, publicity, schedule writing, review, staging, takedown, judges, clerks and especially the Committee members. We also wish to thank all who entered their exhibits in the show. Without you, there wouldn't be a show. Thank you also to the First United Methodist Church, without your approval, we couldn't have held the show in such a lovely facility.



## **NOTES**