



ROTAVATOR



THE MODEL S

Tillage Widths of 80' & 100'... for Tractors
from 60 H.P. to 100 H.P.

Howard's Model "S" ROTAVATOR is a rugged, all-purpose rotary tiller for medium to large-acreage producers. Designed to handle both primary tillage and seedbed preparation, the Model "S" offers precise tillage control for efficient, economical operation even in hard-packed soil. For the ultimate savings in time and fuel, you can team the "S" with a planter or drill and chemical equipment to prepare, plant and incorporate in a single pass. The versatile "S" ROTAVATOR also puts crop residues to work—chopping and blending grain stubble, bean straw, cotton, sugar cane or corn stalks back into the soil to improve structure and promote new crop growth.

THE MODEL S

ALL-SEASON VERSATILITY

There is virtually no tillage job the Model "S" ROTAVATOR can't do, and do more completely than conventional implements. Although ruggedly engineered for primary tillage in even the most compacted soils, the "S" has the versatility to handle secondary tillage jobs with perfect tilth control.

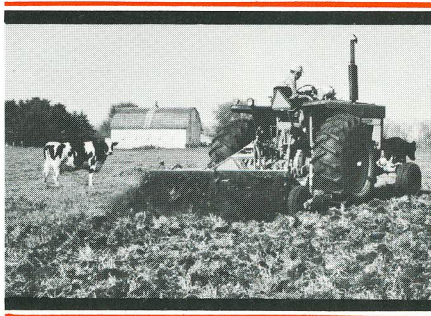
In the fall, the Model "S" can effectively incorporate the toughest crop residues, chopping corn, wheat, bean or similar stubble and mixing it thoroughly into the soil.

Then in the spring, one pass with the "S" is usually all that's needed to prepare a perfect, ready-for-planting seedbed. In fact, many farmers add a drill or planter and incorporate pre-emergence chemicals at the same time they ROTAVATE, completing the entire operation in a single pass.

UNBEATABLE ROTAVATOR ECONOMY

It's a fact: the Model "S" ROTAVATOR can do more in a single pass than conventional tillage equipment, resulting in three-way savings.

ONE: time and fuel savings. Farmers report from one-third to



one-half less of both are required with a ROTAVATOR than with conventional tillage implements.

TWO: less wear on the tractor. This is a direct result of fewer hours in the field plus the extra power and traction assist provided by the PTO-powered, rotating blades. By contrast, other implements create a drag against forward motion.

THREE: savings to the land. With fewer trips over the field and less tractor weight needed, there is less chance of soil compaction which causes hardpan and poor drainage.

PERFECT TILTH CONTROL

Howard's exclusive SELECTATILTH gearbox lets you quickly and conveniently match rotor speeds to soil conditions. A perfect tilth is assured whether on hard, dry knolls or in moist, low sections of the field.

BETTER SOIL STRUCTURE

The "S" ROTAVATOR's ability to chop and thoroughly mix crop residues into the soil serves a dual purpose: it removes residue for spring planting and actually improves soil structure by mixing in humus-producing material. Grain stubble, cotton, sugar cane, rice straw, even corn stalks are chopped and evenly distributed throughout the full working depth. Seedbeds warm up faster in the spring and retain moisture better, ensuring earlier germination and stronger roots.

MANY MODELS TO CHOOSE FROM

Howard manufactures a complete line of ROTAVATORS for all crops and farming conditions. Choose models from 32 inches to 180 inches wide for tractors from 10 H.P. to 200 H.P. Contact your local Howard Dealer or write direct for complete details.

SPECIFICATIONS

Tillage Widths: 80" & 100"

Power Range: For tractors from 60 to 100 PTO H.P. with 540 or 1000 rpm PTO.

Linkage: Category II, 3-point linkage.

Tillage Depth: Adjustable to 8" via twin depth-control wheels.

Rotor Speeds: 157, 172, 188 and 206 rpm with standard SELECTATILTH gears. 6 additional speeds with optional gears.

Machine Weight: S-80/2,043 lbs.
S-100/2,302 lbs.



THE HOWARD ROTAVATOR COMPANY A Member of the Howard Group of Companies
Harvard, IL 60033 Branches in Sacramento, CA and Savannah, GA



ROTASPIKE



ROTAVATOR



V-CHISEL



GRAPE
HARVESTER



ROTAPRESS



TURF-QUAKER



ROTAVATOR

HOWARD®
ROTAVATOR®
SELECTATILTH®
are
registered trademarks of
HOWARD ROTAVATOR
COMPANY