

FOR LEASE

OFFICE SPACE AVAILABLE

712 & 714 S. Barstow, Eau Claire, WI

Approximately
880 SF

Approximately
1,200 SF



- Approximately 1,200 & 880 SF For Lease on Main Level
- Lower Level Available For Storage/Additional Offices
- Highly Visible with Street Signage
- Off Street Parking
- Competitive Rates/Build To Suit

www.midstatesdevelopment.com

**Mid States
Development, Inc.**

www.midstatesdevelopment.com



Contact::

DAVID SANDERS

715-723-2223

dsanders@midstatesdevelopment.com

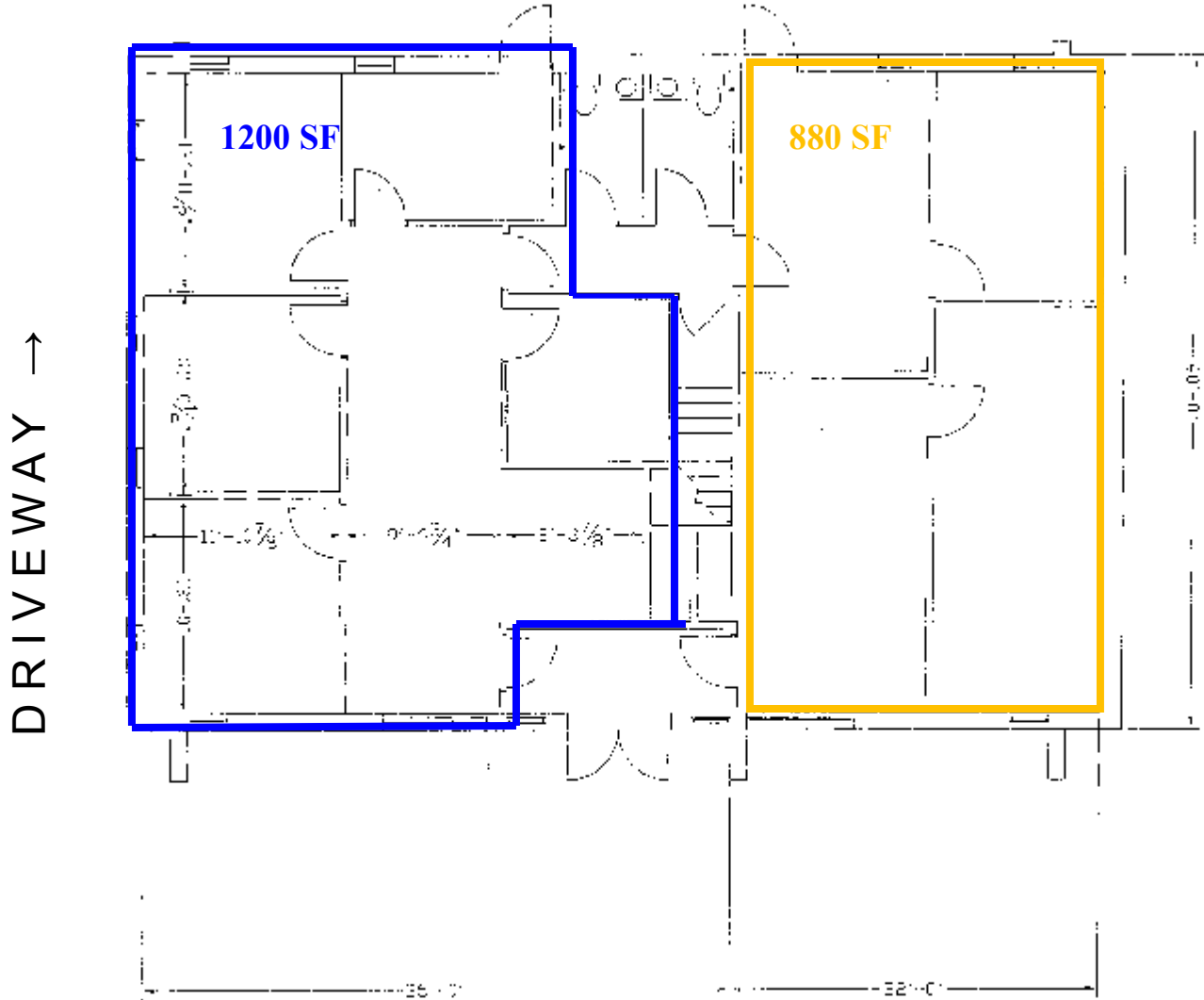
"Your Commercial Real Estate Specialists"

Building Floor Plan

OFF-STREET PARKING -BACK OF BUILDING

712 S. Barstow Street

714 S. Barstow Street



← South Barstow →



dsanders@midstatesdevelopment.com

715-723-2223