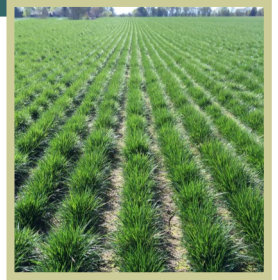


Turf Type Tall Fescue

Black Tail



Benefits:

- ✓ **Top 10 for Turfgrass Quality in NTEP LPI Group 2**
- ✓ **Aggressive Tillering**
- ✓ **Great Brown Patch Resistance**
- ✓ **Excellent Shade Tolerance**
- ✓ **Great Density During the Growing Season**
- ✓ **Traffic Tolerance**

Seeding Rates:

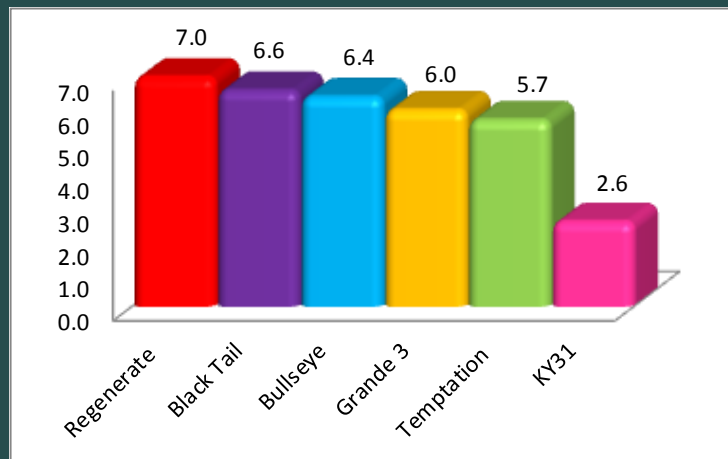
8-10 LBS/1,000 square feet for new establishment

4-5 LBS/1,000 square feet for overseeding

Black Tail (PPG TF-150) is a brand new Turf Type Tall Fescue that has shown superior performance in the NTEP trials and was highly rated in the transition region locations. **Black Tail** is a solid overall performer in traffic stress, fine leaf texture, and brown patch resistance trials. **Black Tail's** aggressive tillering characteristic contributes to its dense, lush canopy.

Black Tail can be used alone or as a component of a blend with other Tall fescues or perennial ryegrass and Kentucky bluegrass. **Black Tail** Turf Type Tall Fescue is perfect for many applications including home lawns, parks, sod production, erosion control, sports fields and commercial properties.

It is an excellent choice for sod producers because of its aggressive tillering trait. The aggressive tillering enables faster recovery and reduces weed invasion.



NTEP 2013 TALL FESCUE TURFGRASS QUALITY RATINGS OF TALL FESCUE CULTIVARS GROWN IN LOCATION PERFORMANCE INDEX (LPI) GROUP 2 TURFGRASS QUALITY RATINGS 1-9; 9=IDEAL TURF TOP VARIETY REGENERATE (7.0) BOTTOM VARIETY KY31 (2.6) FULL REPORT AT WWW.NTEP.ORG

