

HEIMSTEAD PLAZA

AVAILABLE FOR LEASE- 2 CONTIGUOUS SPACES

3,200 SF & 4,756 SF— UP TO 7,956 SQUARE FEET



Great Visibility from Clairemont Avenue

Easy Access to Major Hwys

Warehouse Storage with Office Area

Overhead Doors

Competitive Lease Rates & Flexible Terms

Ample Parking Lot



Call today!

Conveniently located less than two miles from the North Crossing. This warehouse/office strip center features customer parking at your door. In the back of each of these spaces there is warehouse storage with overhead doors. Great for storing inventory, company vehicles, and many other uses!

For More Information, Contact:

DAVID SANDERS
(715) 723-2223



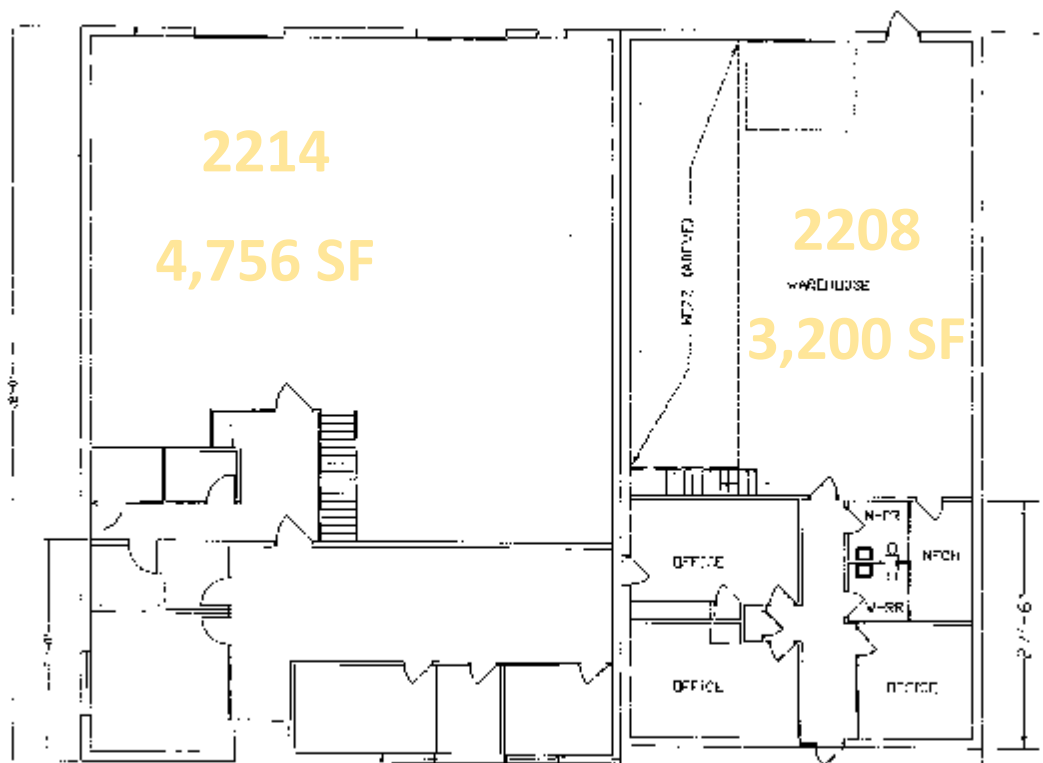
Mid States Development, Inc.

dsanders@midstatesdevelopment.com

"Your Commercial Real Estate Specialists"

2208 & 2214 Heimstead Road

Up to 7,956 Square Feet



Affordable pricing allows you to take advantage of this Excellent location, without paying a high price!

Spaces can accommodate a variety of needs and uses.

Call us today to learn more about this unique opportunity!

David Sanders at 715-723-2223