



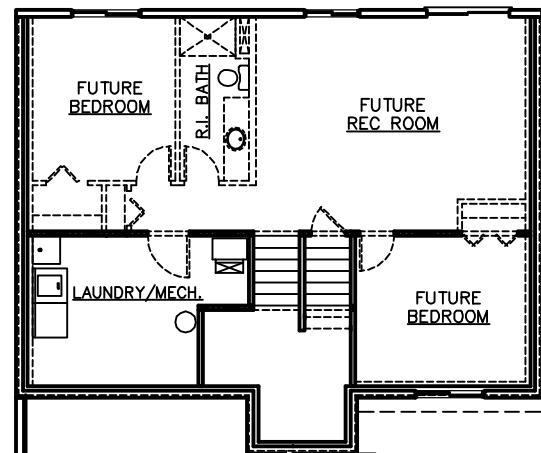
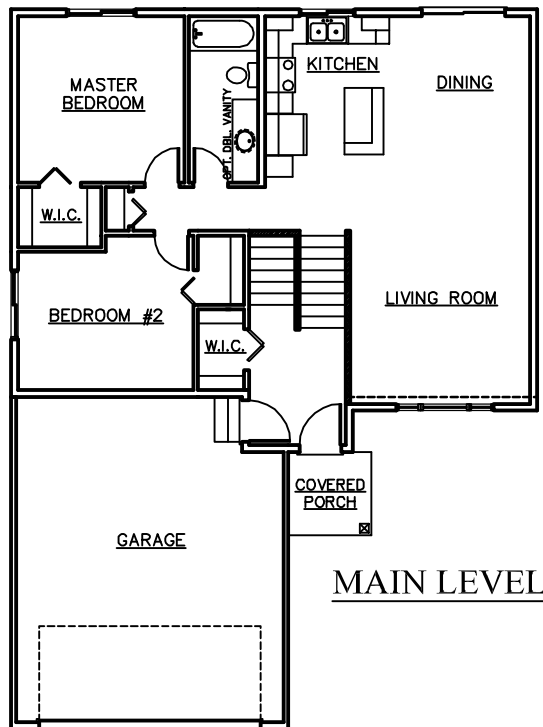
- * 2-4 BEDROOMS, 1-2 BATHROOMS
- * 1,109 - 1,861 SQUARE FEET
- * OPEN FLOOR PLAN
- * VAULTED CEILINGS
- * WALK-IN-CLOSETS
- * COVERED FRONT PORCH

ROOM SIZES

MASTER BEDROOM	12' X 12'
BEDROOM #2	13' X 10'
LIVING ROOM	13' X 15'-5"
DINING	10'-2" X 11'-7"
KITCHEN	9' X 11'-7"
FUTURE REC ROOM	19'-7" X 15'
FUTURE BEDROOM #3	12'-5" X 11'-5"
FUTURE BEDROOM #4	10'-5" X 10'-7"

SOME OPTIONS MAY BE SHOWN

PHOTOS OF PREVIOUS HOME



3475 Vermillion Street, Suite 101 ~ Hastings, MN 55033 ~ 651.437.3700 ~ www.gregjhomes.com

Plans and specifications are subject to change without notice. Copyright Greg J Homes of Hastings Inc. 2016