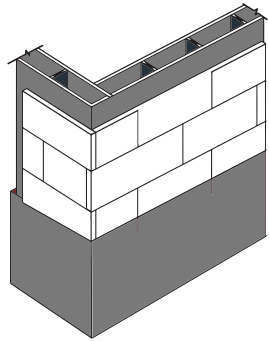


StarR EIFS

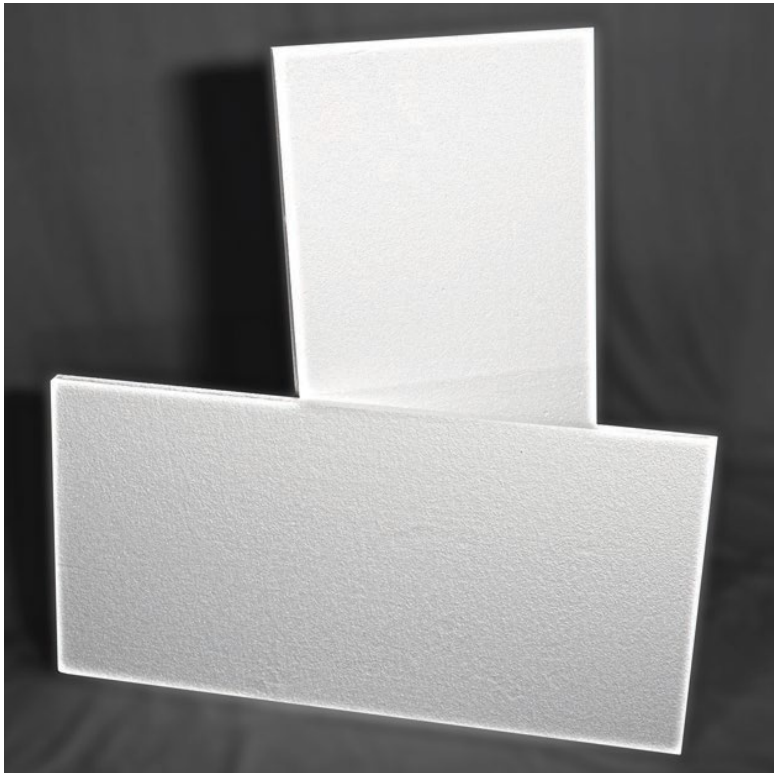
Expanded Polystyrene (EPS)



EIFS is high-quality expanded polystyrene (EPS)

DESCRIPTION

StarR EIFS is a lightweight, closed cell, rigid insulation manufactured from expanded polystyrene (EPS). StarR EIFS meets or exceeds ASTM C578, Standard Specification for Rigid, Cellular Polystyrene Thermal Insulation.



APPLICATION

StarR EIFS is manufactured for both residential and commercial exterior insulation finishing systems. Together these products have unlimited design potential and provide the sought after energy efficiency the market is demanding.

BENEFITS

- Stable R-value
- Proven performance
- Environmentally friendly
- Moisture resistant
- Cost-effective
- Lightweight
- Exceptional bonding surface
- Mold resistant
- Termite protection available
- Labor savings
- Durable
- Code approvals
- Adaptable to specific job needs
- No CFC, HCFC, HFC, or formaldehyde

OPTIONS

Available sizes:

- 2'x4' sheets
- 1/2" to 6" thicknesses in 1/2" increments