

Company Profile

Since its establishment, SonoScape has been committed to providing high quality medical equipment for the healthcare sector. SonoScape specializes in the development and production of diagnostic ultrasound solutions. By introducing advanced imaging techniques, SonoScape has improved diagnostic accuracy and therefore enabled better health outcomes. Since 2002, SonoScape has reached and benefited millions of people from over 100 countries. With the world in mind, SonoScape will continue providing more effective and accessible healthcare solutions, through persistent innovation and passion for life.

Quote from the Analyst of

"SonoScape Co. Ltd. has exhibited exceptional entrepreneurial capabilities ... The company's priority in maintaining high levels of quality in its product lines is well supported by the negligible after-sales costs associated with its ultrasound systems. Also with the launch of SSI-1000, the hand carried ultrasound with multiple clinical applications; SonoScape has made significant strides towards establishing itself as a global medical equipment manufacturer."

Mr.Krishanu Bhattacharjee

Company Milestone

2002: Company Founded in Shenzhen, China
2003: Released SSI-1000: the 1st 15" Portable Color Doppler system in China
2004: Released SSI-2000: the 1st PC platform Color Doppler system in China
2005: Received the "High Technology Company" award from the PRC government
2007: Received "CHINA TOP BRAND" award in the Medical Equipment Industry
2007: Released the 1st Real time 4D ultrasound system in China
2008: Received "European Entrepreneurial Company 2008" award from FROST & SULLIVAN
2008: Received "Flagship Company" award in the Medical Equipment Industry in China
2009: Received "Product Quality Leadership Award 2009" award from FROST & SULLIVAN in London, UK
2011: Received the Reddot 2011 Product Design Award for S20 in Essen, Germany



SonoScape

Yizhe Building, Yuquan Road, Shenzhen, 518051, China

Tel: 86-755-26722890 Fax: 86-755-26722850

E-mail: market@sonoscape.net www.sonoscape.com

SSI-6000

High Value for All Application



SonoScape
Caring for Life through Innovation



SSI-6000 is a full-function color Doppler system which delivers high value in every specialty area of ultrasound diagnosis. Configured with state-of-the-art technologies, the SSI-6000 presents powerful imaging capability: Color, Power and Spectral Doppler, for a wide range of clinical applications. The SSI-6000 undertakes to accomplish challenging tasks and satisfy your different clinical requirements.

Excellent Performance with Innovative Technologies

+ Broadband Transducers

Better utilization of all frequency bands achieves high resolution in the near field as well as deep penetration in the far field

+ High Density Transducers

Supports 256-elements high density transducer, for excellent imaging resolution

+ Unique μ -Scan Technology

Reduces speckle noises while enhancing lesion border detection

+ Multi-beam Processing

Increases temporal resolution without reducing image quality

+ Tissue Harmonic Imaging

Optimizes spatial and contrast resolution in grayscale imaging

+ Compound Imaging Technology

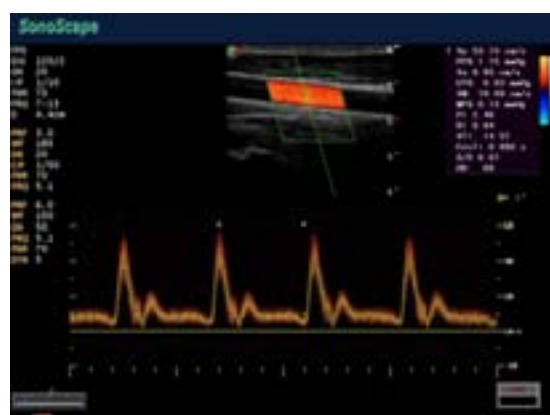
Improves the contrast resolution of 2D images



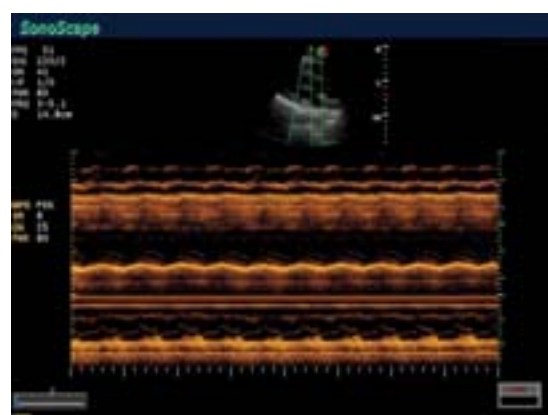
Automatic Flow Volume Calculation



IMT Measurement



PW Flow Trace



Steer M Mode - 3 lines

Advanced Software and Clinical Tools

+ M-Tuning

One button auto-optimization for 2D and spectral Doppler imaging

+ Trapezoidal Imaging

Extends the field of view for linear transducers, thereby obtaining more clinical information for more confident diagnosis

+ Panoramic Imaging

Enables more comprehensive visualization of large-size parts/lesions

+ TEI Index

A specialist clinical tool for evaluating the diastolic and systolic function

+ Freehand and Real-time 3D

Freehand 3D function is available on all transducers; also with optional update to Real-time 3D imaging

+ Optional Update with Steer M Mode

Real-time M imaging with free angle adjustment, allows more accurate measurement

A Full Range Transducer

+ Convex

+ Micro-Convex

+ Transvaginal

+ Intra-operative

+ Volumetric

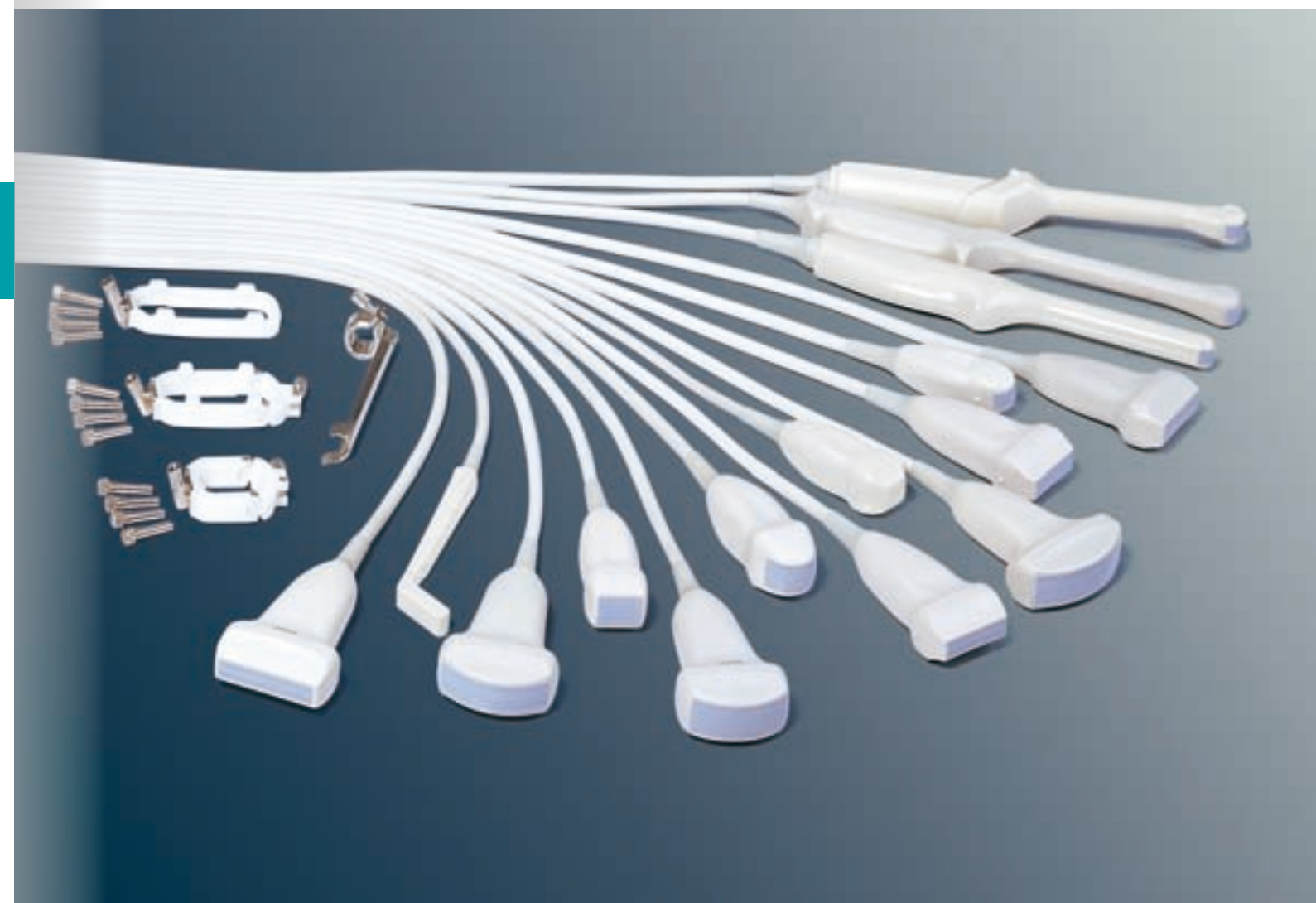
+ Linear

+ Phased Array

+ Transrectal

+ Bi-plane

+ Biopsy kits





User-friendly Ergonomic Design for a Fatigue-free Work Environment

- + 17" widescreen LCD with articulated arm
- + Three standard transducer ports for simultaneous connection
- + Intuitive control panel design
- + Four USB ports, 320G HDD
- + Convenient trolley system: front/rear handles, four-wheel-swivel with locking brakes



Kidney Hydronephrosis



Kidney Color Flow



Kidney Power Flow



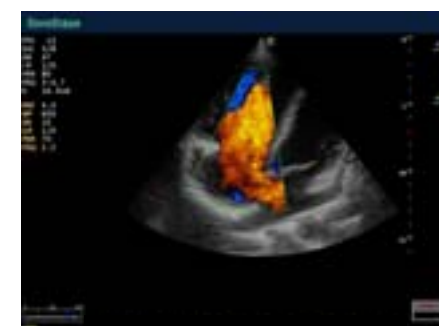
Thyroid



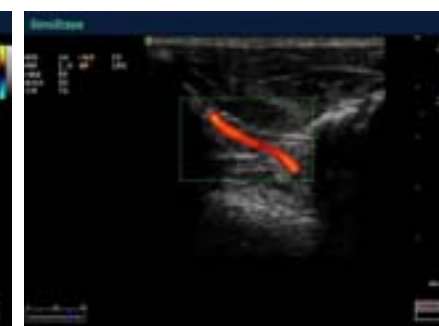
Thyroid Tumor



Urine Bladder Flow



Atrium Septum Defect



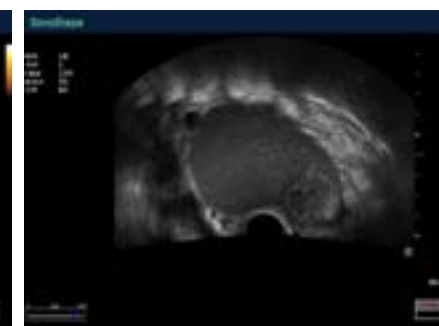
Palm Artery



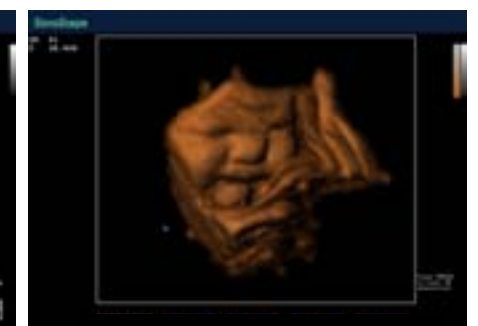
Carotid Bifurcation



Fetal Aortic Arch



Uterus Mass



Fetal Face