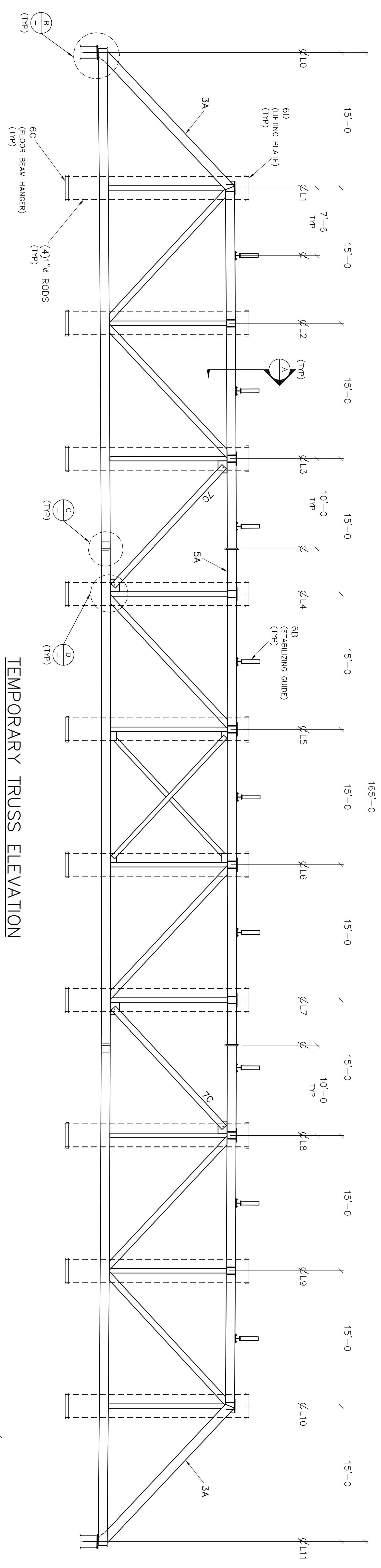
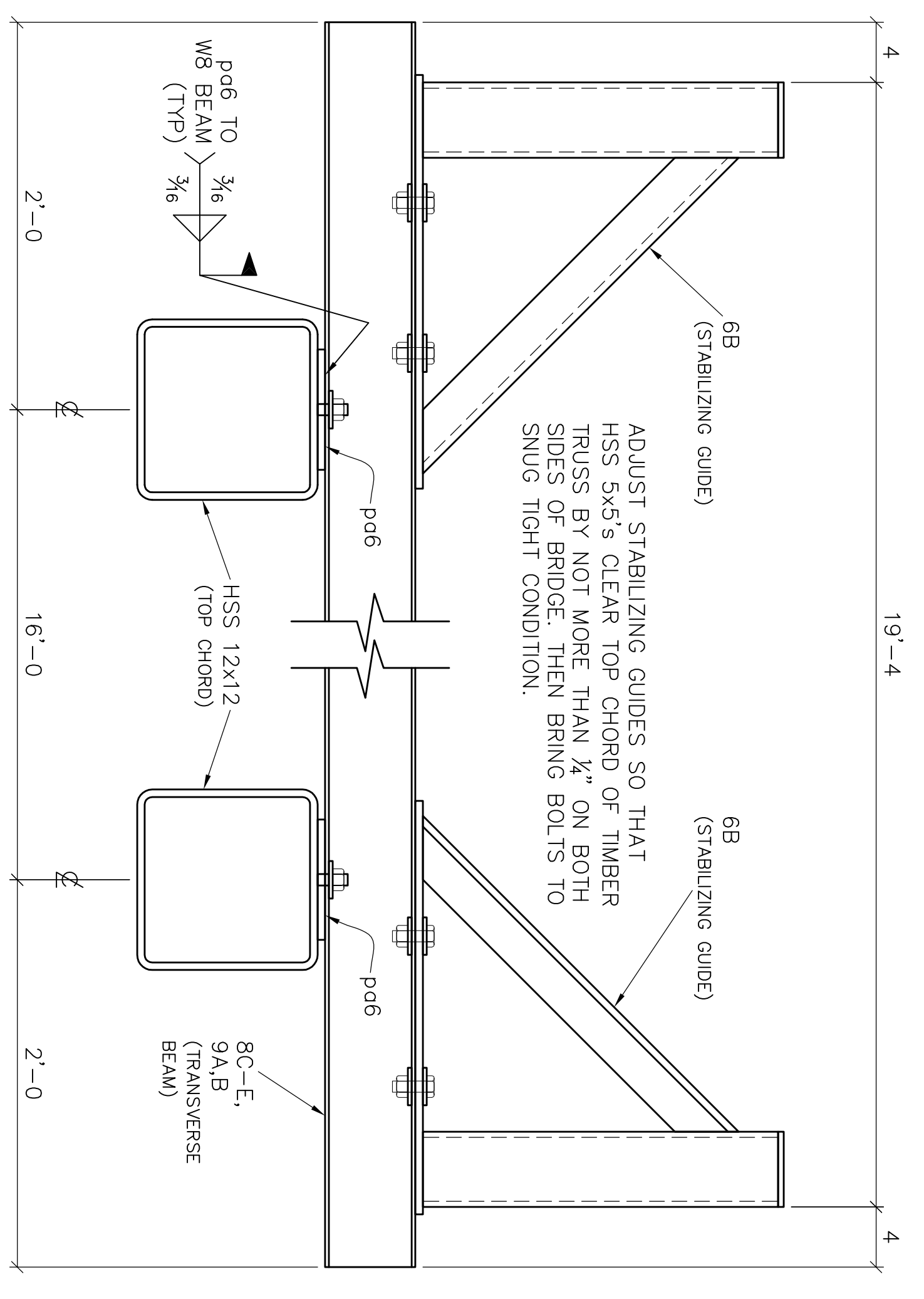


L0 (EL. 0'-0") L1 (EL. 0'-1½") L2 (EL. 0'-2¾") L3 (EL. 0'-3¾") L4 (EL. 0'-4¾") L5 (EL. 0'-4¾") L6 (EL. 0'-4¾") L7 (EL. 0'-4¾") L8 (EL. 0'-3¾") L9 (EL. 0'-2¾") L10 (EL. 0'-1½") L11 (EL. 0'-0")

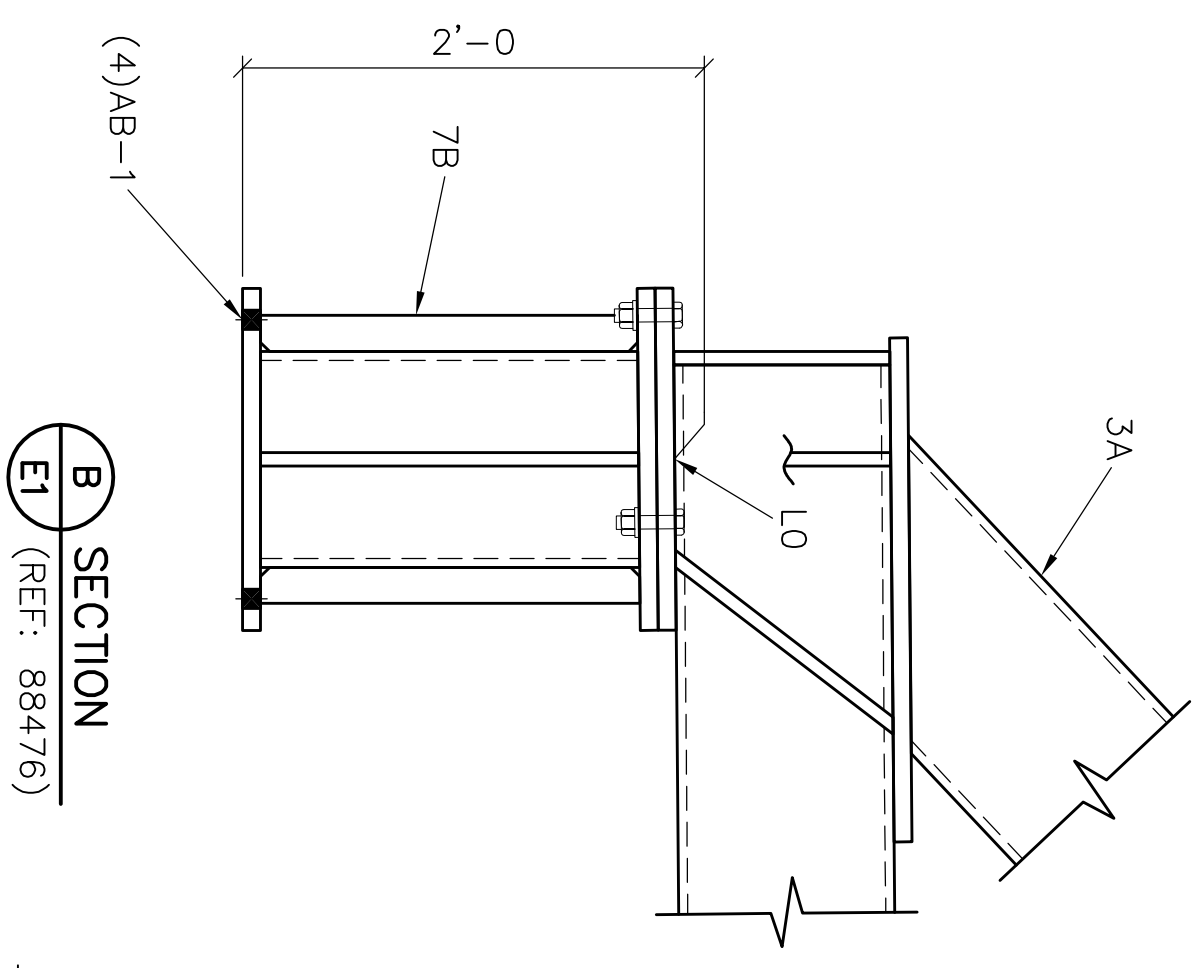
CAMBER DIAGRAM



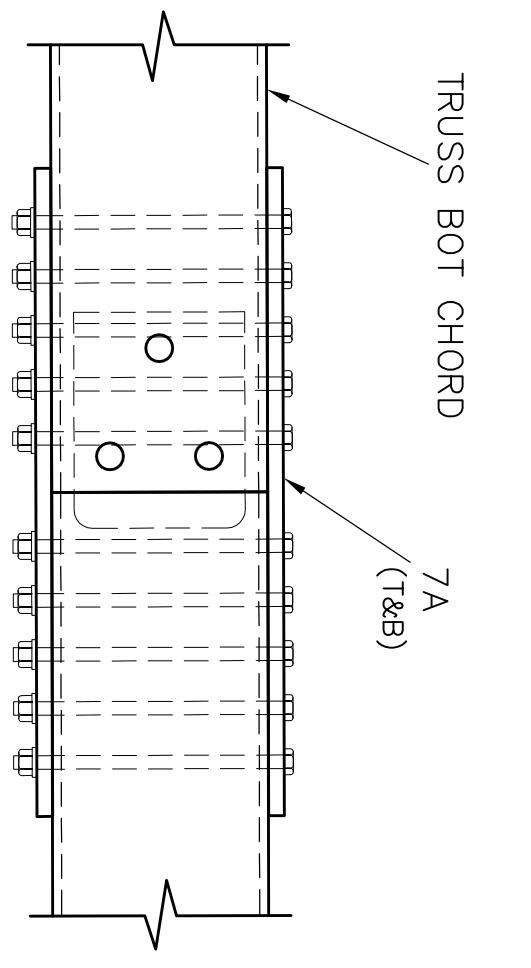
TEMPORARY TRUSS ELEVATION



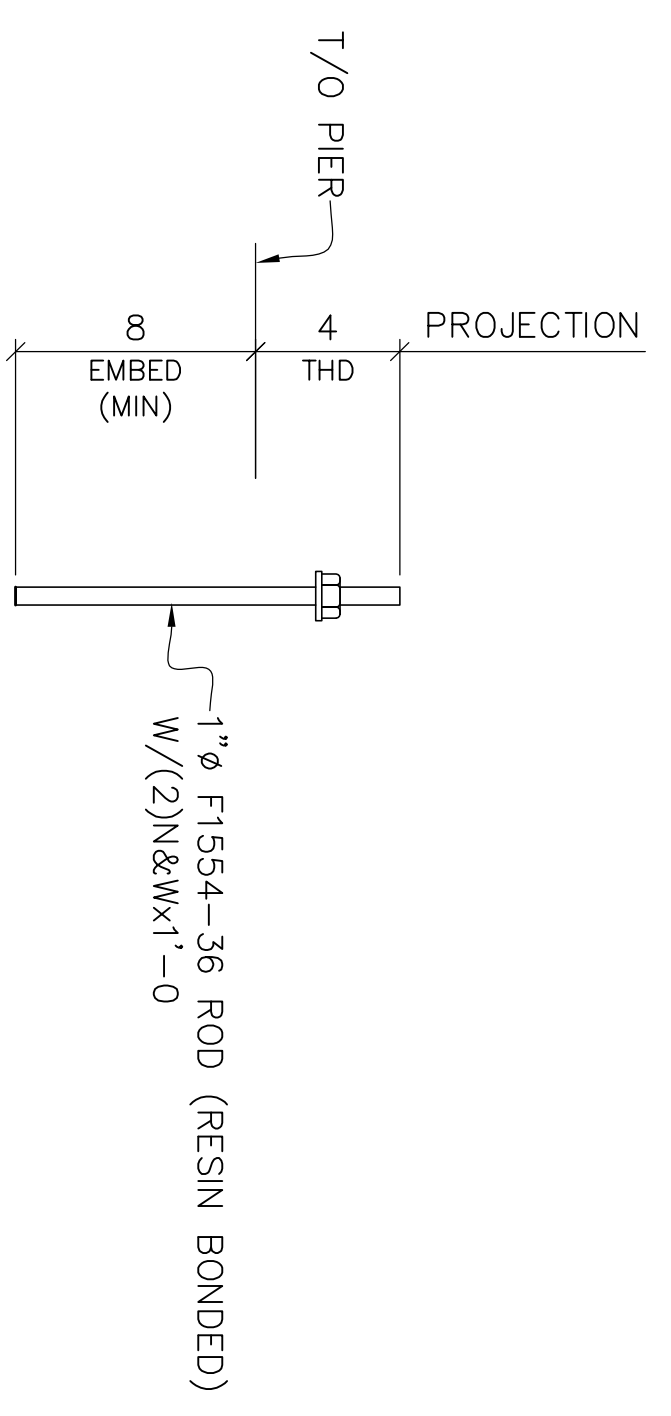
SECTION A (REF: 88475)



SECTION B (REF: 88476)



SECTION C (REF: 88476)



SECTION D (REF: 88476)

16 REQD MK AB-1 (REF: 88476)

REVISION	DATE	BY	DESCRIPTION
2	8-21-12	DAW	REVISED A/E1
1	8-8-12	DAW	REVISED AB-1
0	7-31-12	DAW	ISSUED FOR ERECTION
A	7-23-12	DAW	ISSUED FOR APPROVAL

TRUE LINE STEEL, INC.
 800 NE Hemlock Ave Redmond, OR 97756 Ph:(541)548-7465 Fax:(541)548-7485

PROJECT
 MCKENZIE RIVER BRIDGE REHABILITATION

CONTRACTOR	CONWAY CONSTRUCTION
DETAILER	RIVERSIDE DETAILING
SCALE	NOT TO SCALE
JOB NO.	372
DRW. NO.	DAW
CHK'D. CDW.	REF: 88475
DWG. NO.	E1