



ATLAS PUMP

PumpRite, Inc.

sales@ pumprite.com

630-543-7867



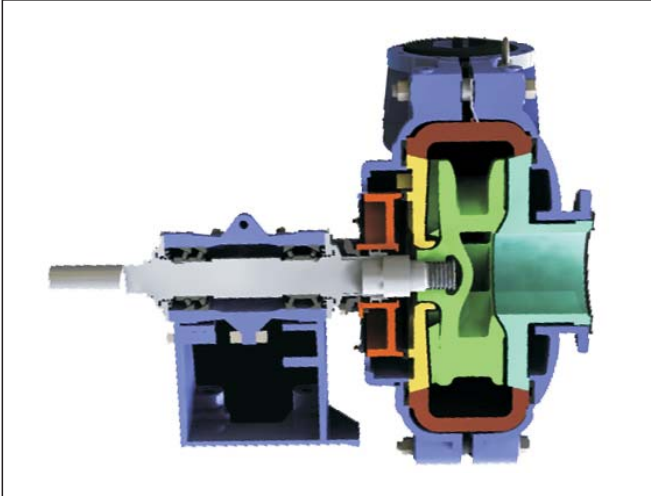
ATLAS INDUSTRIAL PUMP

Products

- Slurry pump size: 20-750mm
- Model :10 series / 140 sizes
- Plus : FGD pump/ Dredge pumps
- Type: Horizontal / Vertical /Submersible pumps
- Material: Metal & Rubber



Horizontal Pumps



Metal pump-wet parts

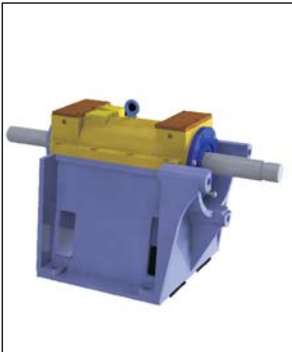


Rubber pump-wet parts

Vertical Pumps













Grease Lubrication Bearing Assembly



Oil lubrication Bearing Assembly

ATLAS Pump Series & Applications

Pump	Model	Discharge size	Capacities to	Heads to	Material	Applications	Duty
	WX (R)	1"-18"	5400m ³ /hr	73m	Metal and Rubber	most difficult pumping applications. Reliable operation and long wear life.	██████████
	WXH	1"-6"	1152m ³ /hr	98m	Metal	heavy duty applications require high heads per stage at high pressures. suitable for long distance transporting.	██████████
	WL	20-650mm	10260 m ³ /hr	63m	Metal and Rubber	continuous slurry handling applications where a large flow at a low to medium head is required. Specially for medium abrasive solids, lower solids concentrations applications.	██████████
	WG/WGH	4-20"	5600m ³ /hr	78m	Metal	highly abrasive slurries containing large particles which the WX and WL Series cannot handle., dredging, mining and smelting are typical applications.	██████████
	VC (R)	40-250mm	1089m ³ /hr	38m	Metal and Rubber	most pumping applications, no shaft seal, easy to fix and cost less.	██████████
	SPH	65-300mm	1920m ³ /hr	94m	Metal	high-head heavy duty applications like ash removal in power plants and mining tailing	██████████
	SPL	50-300mm	2333m ³ /hr	128.7m	Metal	high-head heavy duty applications like ash removal in power plants and mining tailing	██████████
	SPS	40-250mm	1600m ³ /hr	65m	Metal	corrosive with solid particles applications like mining, power plant, metallurgical, coal; especially handle corrosive slurry with crystals	██████████
	WDL(R)	300-1000mm	15000m ³ /hr	42m	Metal and Rubber	Especially designed for fuel and gas desulfurization in power plants, wide range of flow rate with high efficiency.	██████████
	WMC	125-750mm	21000m ³ /hr	55m	Metal and Rubber	Especially designed for most aggressive applications like ball and SAG mill cyclone feed, coarse sand and dredge etc.	██████████

Typical Applications

Model Applications	WX	WXH	WL	WG	VC	SPH	SPL	SPS	WMC	WDL
Mill discharge	■						■		■	
Coarse sand	■	■			■	■	■		■	
Coarse tailings	■	■			■	■	■		■	
Phosphoric acid	■	■	■	■	■	■	■			
Mineral concentrate	■		■		■	■	■		■	
Heavy Media	■	■	■		■	■	■		■	
Dredging				■				■	■	
Lime grinding	■	■	■		■	■	■	■		
Fine tailings	■	■	■	■	■	■	■	■		
Coal washing	■	■	■		■	■	■	■	■	
FGD	■	■	■		■	■	■	■		■



Thickener underflow pump in a copper mine
 6x4D-WX
 Q=110m³/h, H=38m,
 n=1230rpm, γ =1.2



Mineral concentrate in a iron ore mine
 4x3D-WX
 Q=144m³/h, H=38m,
 n=1960rpm, γ =1.13

Manufacture capacity

In house foundry, machining, heat treatment, welding, assembly, pump testing station and lab facilities, we manufacture most critical parts in our factory. Castings are mainly high chrome white iron.

Output: 250tons/month, 300 pumps/month.

Material Options

ATLAS code	Material #	Hardness HRC	Performance	Applications
AT01	KmTBCr8	≥55	Abrasion-resistant performance is about 10% less than AT05.	Mud & slag applications
AT03	KmTBNi4Cr2	≥56	Abrasion-resistant performance is about 20% less than AT05.	Neutral water-sand slurry and applications with lower impact load.
AT05	KmTBCr26	≥56	Ranks second only to AT07 in abrasion-resistant performance; fair corrosion-resistant performance.	High impact load abrasion condition; PH rate ranging from 5 to 12.
AT07	KmTBCr15Mo3	≥59	Best abrasion-resistant performance; corrosion-resistant performance is inferior to AT05.	High impact load abrasion condition.
AT11	KmTBCrMnMo	38-42	Mild corrosion-resistant; lower hardness; drilling and tapping operations are applicable.	Fine particles with light abrasion.
AT33		≥35	Abrasion-resistant performance is close to AT03; fair corrosion-resistant performance.	Oxide slurry with PH rate no less than 1, like phosphogypsum in phosphate fertilizer plant, nitric acid, sulphoic acid and phosphoric acid, etc.
AT49		≥43	Fair abrasion-resistant performance, close to AT03; fair corrosion-resistant performance in media with lower PH rate.	Corrosion conditions with low PH rate, especially for flue gas and FGD devices for media of $PH \geq 4$; general suitable for lower acid condition.
AT12		≥62	Higher abrasion-resistant performance than AT05; fair corrosion-resistant performance; suitable for media with PH rate is 6-14, where AT05 is not suitable.	High abrasive slurry with fine particles.
AT61		63~68	Optimized abrasion-resistant performance than AT12.	High abrasive slurry with fine particles.

Material	Material #	Applications
Natural Rubber	RT08	RT08 is low to medium hardness rubber used for impellers where slurry contains fine particles and more erosive.
Natural Rubber(soft)	RT26	RT26 is soft natural rubber used for liners where slurry contains fine particle and more erosive.
Natural Rubber (soft)	RT33	RT33 is widely used for frame plate liners, cover plate liners and impellers. Maximal particle diameter is 10 mm; impeller Peripheral speed should be less than 25m/s; suitable for temperature not exceeding 75°C.
Natural Rubber	RT55	RT55 is widely used for impellers, frame plate liners, cover plate liners and throat bushes. Maximal particle diameter can be 20 mm; impeller peripheral speed should be less than 27.5m/s; suitable for temperature not exceeding 75°C.
EPDM Rubber	ST01	ST01 is widely used for impellers, frame plate liners, cover plate liners and throat bushes. Maximal particle diameter can be 8 mm; impeller peripheral speed should be less than 25m/s; suitable for temperature not exceeding 120°C (continuous duty) Or 140°C (discontinuty)
Nitrile Rubber (NBR)	ST12	ST12 is widely used for frame plate liners, cover plate liners, throatbushes, lip seals, impellers and Expellers. Maximal particle diameter is 7mm; impeller peripheral speed should be less than 27m/s; Suitable for temperature not exceeding 95°C.
Butyl Rubber	ST21	ST21 is widely used for impellers, frame plate liners, cover plate liners, expellers, volute seals and throat bushes. Maximal Particle diameter can be 7 mm; impeller peripheral speed should be less than 30m/s; suitable for temperature not exceeding 100°C.
Hypalon	ST31	ST31 can be used for impellers, frame plate liners, cover plate liners and throat bushes. It is recommended to use for strong Acid slurry with mild or moderate corrosion. Maximal particle diameter can be 10 mm; impeller peripheral speed should be Less than 30m/s; suitable for temperature not exceeding 110°C.

[Consult Atlas for unlisted materials](#)

Workshops

Foundry



Heat treatment



Machining



Workshops

Assembly



Pattern Shop

With 3D-model technology and CNC equipments, we design and construct pattern by ourselves, to ensure the confidentiality of client's products, and quality as well as manufacturing cycle.



Pump performance testing station

The testing system was designed and constructed by Beijing Agriculture University.

- Capacity up to 5000 m³/hr
- Pressure to 4 MPa
- Power to 1000 kw
- Max voltage is 6600V, 50HZ and 60HZ are optional



Test terms:

- Capacity / -Head / -NSPH / -Bearing Temp./ -Vibration / -Noise Level
- others as per clients requirements

Test Criteria:

ISO9906, Rotodynamic pumps

- Hydraulic performance acceptance tests -- Grades 1, 2;

ISO2548, Centrifugal, mixed flow and axial pumps

- Code for acceptance tests -- Class C;

ISO3555, Centrifugal, mixed flow and axial pumps

- Code for acceptance tests -- Class B.

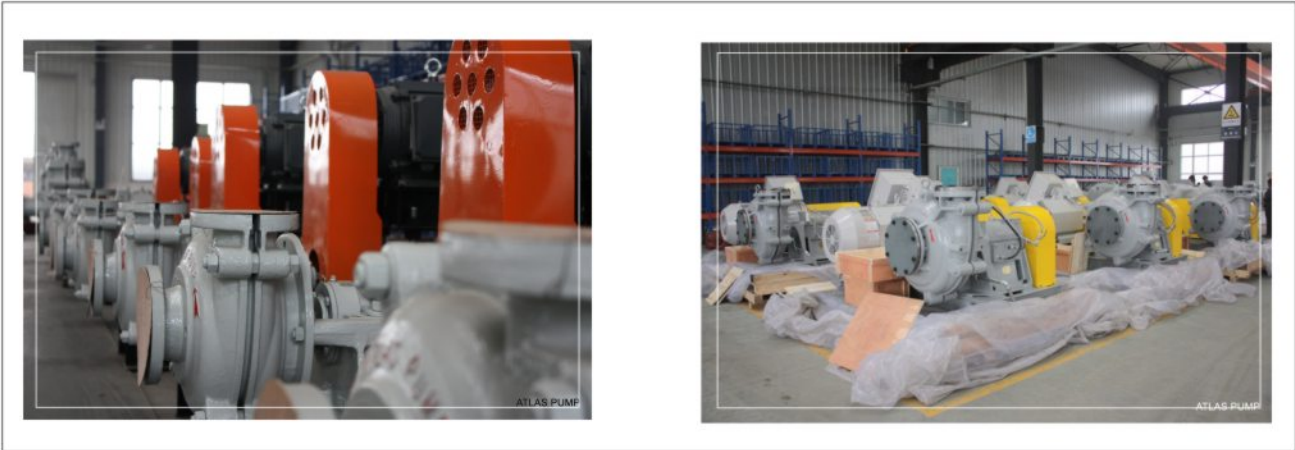
ISO2372, Measuring and evaluating standard for vibration severity;

ISO3746, Acoustics.

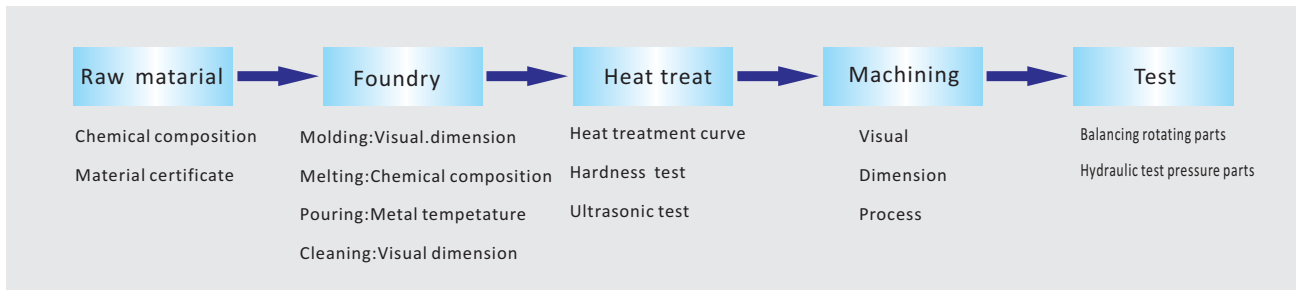
- Determination of sound power levels and sound energy levels of noise sources using sound pressure.



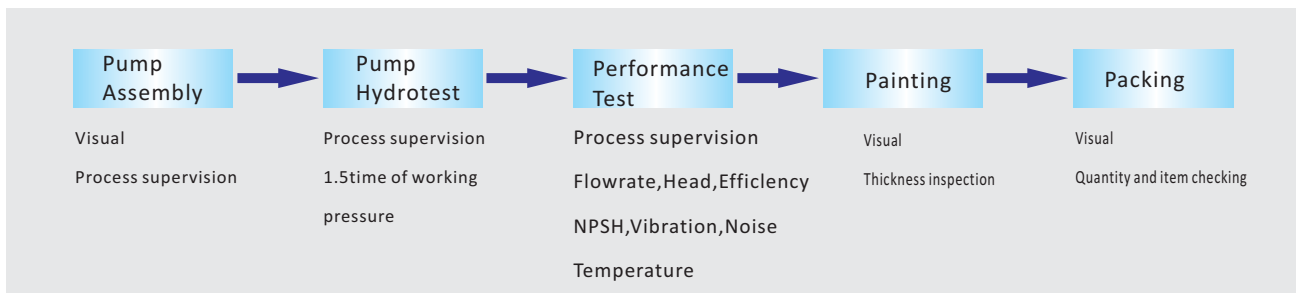
Finished pumps and parts



Components: QC key point



Pumps: QC key point



Raw material inspection

- Sub-supplies are assessed and approved.
- All the incoming materials are with certificate or are tested in lab.

Casting Inspection

- Melting :
chemical composition by spectrometer, fill in composition sheet and reserve sample of each furnace for 6 month.
- Molding: Each step of molding is checked by and documented by inspector.
- Pouring: Check metal temperature before pouring and after pouring.
- Cleaning :
check dimension before painting.

Machining Inspection

- Self Check and Mutual Check
- First piece Check
- Procedure Check
- Entering Warehousing Check

Assembly Inspection and Test

- Inspectors monitor the whole assembly procedure
- Hydraulic test: 1.5time of working pressure

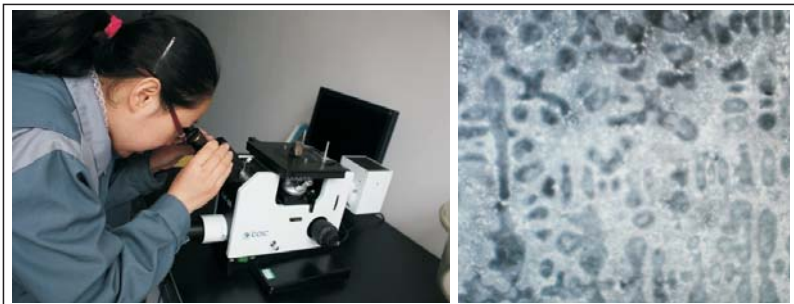
Lab



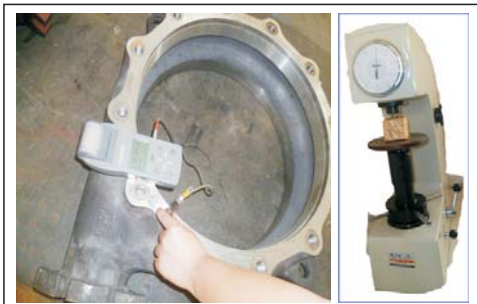
Spectrometer
Quick testing chemical composition



Tensile strength tester



Microscope Structure analysis



Hardness tester



Balancing



Ultrasonic test



Hydraulic test

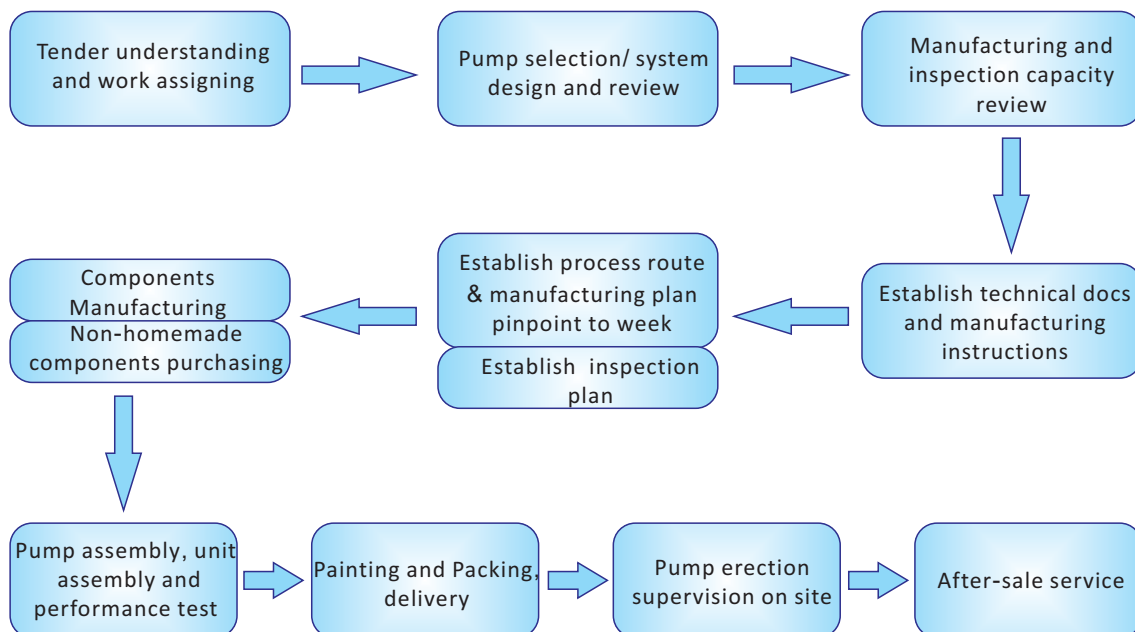


Project management

Our Project managers have a thorough knowledge of the equipments and manufacturing industry, capable of understanding and discussing the problems with clients and internal departments. Ensuring that the key issues of cost, time, quality and above all, client satisfaction, can be realized.

- Good English communication ability
- Strong Industrial manufacturing knowledge
- Deep understanding to slurry pump structure, manufacturing process and application.
- Excellent coordinating ability with both clients and factory
- Excellent organization skills
- Determined to realize each goal

PM Flow



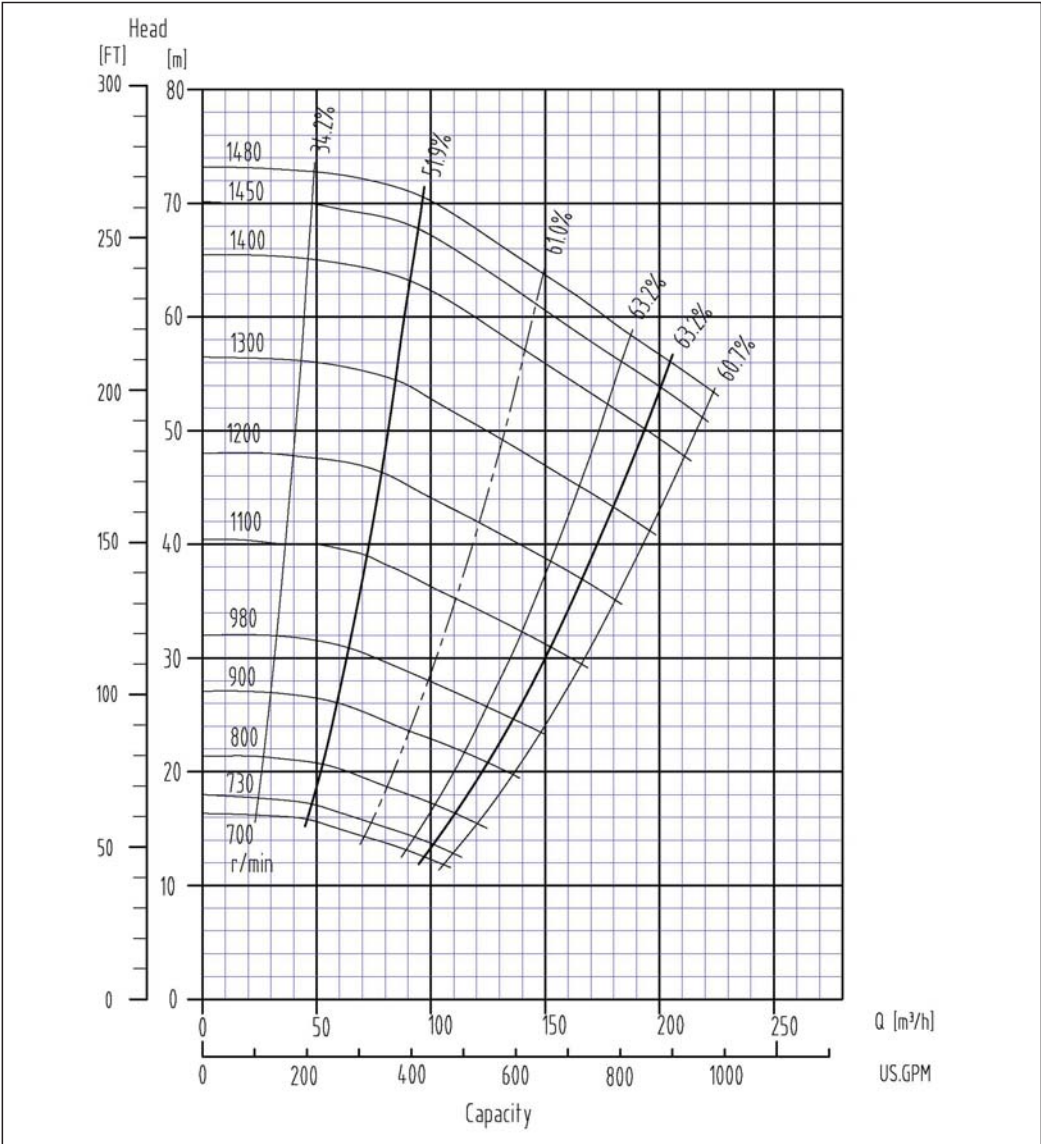
On-site technical service



Application on Coal Preparation

SPLG Pumps' advantage on Filter-press feeding

Below curve illustrate the performance of a 100SPLG slurry pump running under different speeds, from the trend of the curves, we can see that the Head drops quickly when Flow rate increases, by the rule of power consumption: the power is directly proportional to the product of flow rate and head, and the curves are nearly reverse 45 degree, this means, the power won't change much when flow rate or head change, this characteristic especially applies to filter-press feeding applications in coal preparation plants, where the flow rate need to be substantial under lower head, and minor flow rate at high head.



ATLAS PUMP

ATLAS	WARMAN®	ATLAS	WARMAN®	ATLAS	WARMAN®	ATLAS	WARMAN®	ATLAS	WARMAN®	ATLAS	WARMAN®
WX	AH	WXR	AHR	WM	M	WMR	MR	WL	L	WLR	LR
1.5x1B-WX	1.5/1B-AH	1.5x1B-WXR	1.5/1B-AHR	10x8E-WM	10/8E-M	10x8E-WMR	10/8E-MR	20A-WL	20A-L		
2x1.5B-WX	2/1.5B-AH	2x1.5B-WXR	2/1.5B-AHR	10x8F-WM	10/8F-M	10x8F-WMR	10/8F-MR	50B-WL	50B-L		
3x2C-WX	3/2C-AH	3x2C-WXR	3/2C-AHR	10x8R-WM	10/8R-M	10x8R-WMR	10/8R-MR	75C-WL	75C-L		
4x3C-WX	4/3C-AH	4x3C-WXR	4/3C-AHR	10x8X-WM		10x8X-WMR		100D-WL	100D-L		
4x3D-WX	4/3D-AH	4x3D-WXR	4/3D-AHR	12x10E-WM	12/10E-M			150E-WL	150E-L		
4x3X-WX		4x3X-WXR		12x10F-WM	12/10F-M			250F-WL	250F-L		
6x4D-WX	6/4D-AH	6x4D-WXR	6/4D-AHR	12x10R-WM	12/10R-M			300S-WL	300S-L	300S-WLR	300S-LR
6x4E-WX	6/4E-AH	6x4E-WXR	6/4E-AHR	12x10X-WM				350S-WL	350S-L	350S-WLR	350S-LR
6x4X-WX		6x4X-WXR						400ST-WL	400ST-L	400ST-WLR	400ST-LR
8x6E-WX	8/6E-AH	8x6E-WXR	8/6E-AHR					450ST-WL	450ST-L	450ST-WLR	450ST-LR
8x6F-WX	8/6F-AH	8x6F-WXR	8/6F-AHR					500T-WL	500T-L		
8x6R-WX	8/6R-AH	8x6R-WXR	8/6R-AHR					550TU-WL	550TU-L		
8x6X-WX		8x6X-WXR						650TU-WL	650TU-L		
10x8ST-WX	10/8ST-AH	10x8ST-WXR	10/8ST-AHR								
10x8F-WX	10/8F-AH	10x8F-WXR	10/8F-AHR								
10x8G-WX	10/8G-AH	10x8G-WXR	10/8G-AHR								
10x8X-WX		10x8X-WXR									
12x10ST-WX	12/10ST-AH	12x10ST-WXR	12/10ST-AHR								
12x10F-WX	12/10F-AH	12x10F-WXR	12/10F-AHR								
12x10G-WX	12/10G-AH	12x10G-WXR	12/10G-AHR								
12x10X-WX		12x10X-WXR									
14x12ST-WX	14/12ST-AH	14x12ST-WXR	14/12ST-AHR								
14x12G-WX	14/12G-AH	14x12G-WXR	14/12G-AHR								
14x12F-WX	14/12F-AH	14x12F-WXR	14/12F-AHR								
14x12X-WX		14x12X-WXR									
16x14TU-WX	16/14TU-AH	16x14TU-WXR	16/14TU-AHR								
20x18TU-WX	20/18TU-AH	20x18TU-WXR	20/18TU-AHR								

ATLAS	WARMAN®	ATLAS	WARMAN®	ATLAS	WARMAN®	ATLAS	WARMAN®	ATLAS	ATLAS	ATLAS	ATLAS
WG/WGH	G/GH	VC	SP	VCR	SPR	WH/WXH	HH/H	SPH	SPL	SPS	WDL
6x4D-WG	6/4D-G	1.5P-VC	40PV-SP	1.5P-VCR	40PV-SPR	1.5x1C-WXH	1.5/1C-HH	65SPH	40SPL-17	50SPS	300S-WDL
6x6E-WG	6/6E-G	2.5Q-VC	65QV-SP	2.5Q-VCR	65QV-SPR	3x2D-WXH	3/2D-HH	80SPH	40SPL-19	80SPS	400ST-WDL
8x6E-WG	8/6E-G	4R-VC	100RV-SP	4R-VCR	100RV-SPR	4x3E-WXH	4/3E-HH	100SPH	50SPL-33	100SPS	500T-WDL
8x8F-WG	8/8F-G	6S-VC	150SV-SP	6S-VCR	150SV-SPR	6x4F-WXH	6/4F-HH	150SPH	50SPL-46	150SPS	600TY-WDL
8x8S-WG	8/8S-G	8S-VC	200SV-SP			6S-WH	6S-H	200SPH	65SPL-30	200SPS	700TY-WDL
10x8F-WG	10/8F-G	10T-VC	250TV-SP					250SPH	80SPL-36	250SPS	800UY-WDL
10x8S-WG	10/8S-G							300SPH	80SPL-42	300SPS	1000UY-WDL
12x10G-WG	12/10G-G								80SPL-52		WMC
12x10F-WG	12/10F-G								100SPL-36		125WMC
14x12G-WG	14/12G-G								100SPL-42		150WMC
18x16T-WG	18/16T-G								100SPL-50		200WMC
20x18H-WG	20/18H-G								150SPL-50		250WMC
24x20H-WG	24/20H-G								150SPL-60		300WMC
10x8S-WGH	10/8S-GH								150SPL-65		350WMC
12x10G-WGH	12/10G-GH								200SPL-60		400WMC
16x14TU-WGH	16/14TU-GH								250SPL-75		450WMC
									250SPL-85		550WMC
									300SPL-56		650WMC
									300SPL-70		750WMC

ATLAS PUMP & CROSS REFERENCE



ATLAS PUMP

PROJECTS

**MINING
METALLURGY
COAL WASHING
FGD**

www.atlas-pump.com



Client: TWP Australia
 Project: Siana Gold Mine
 Location: Philippines

Model	Capacity (m ³ /hr)	Head (m)	Slurry Density (ton/m ³)	Pump Speed	Motor	Qty.
12*10X-WX	800m ³ /hr	95m	1.27ton/m ³	890rpm	YKK500-8/450/4160V/60HZ/IP55/F	3
6*4D-WXR	300m ³ /hr	27m	1.27ton/m ³	1183rpm	YVF2-280M-6/55KW/60HZ/IP55	2
6*4F-WXH	356m ³ /hr	68m	1.26ton/m ³	850rpm	YVF2-335M1-6/160KW/60HZ/IP55	2
10*8F-WXR	747m ³ /hr	41.6m	1.50ton/m ³	705rpm	YVF2-355L-8/200KW/60HZ/IP55	2
6*4D-WXR	216m ³ /hr	18.8m	1.50ton/m ³	970rpm	YVF2-225M-6/37KW/60HZ/IP55	2
4R-VCR	270m ³ /hr	8.8m	1.26ton/m ³	578rpm	YVF2-160L-6/7.5KW/60HZ/IP55	2
1.5*1B-WXR	5m ³ /hr	17m	1.02ton/m ³	1900rpm	YVF2-80M2-2/1.1KW/60HZ/IP55	10





Client: Dedeman Mining

Project: Dedeman Iron Ore Project

Location: Turkey

Model	Capacity (m ³ /hr)	Head (m)	Slurry Density (ton/m ³)	Pump Speed	Motor
3X2CC-WX	51	62	1.63	2700	Y200L2-2,37KW,50HZ/IP54/F
1.5X1CC-WXH	25.6	72.6	1.63	2120	Y250M-2,55KW,50HZ/IP54/F
3X2CC-WX	72	52	1.36	2560	Y200L2-2,37KW,50HZ/IP54/F
1.5X1B-WX	11.6	68	1.57	3800	Y160M2-2,15KW,50HZ/IP54/F
1.5X1B-WX	13.5	72	1.48	3900	Y160M2-2,15KW,50HZ/IP54/F
1.5X1C-WXH	16.5	64.6	1.65	1860	Y200L-4,30KW,50HZ/IP54/F
3X2CC-WX	56	60	1.345	2670	Y200L2-2,37KW,50HZ/IP54/F
3X2C-WX	48.75	41	1.52	2230	Y200L1-2,30KW,50HZ/IP54/F





Client: Posco E&C
 Project: Blast Furnace of Integrated Steel
 Location: Indonesia

Model	Capacity (m ³ /hr)	Head (m)	Slurry Density (ton/m ³)	Pump Speed	Motor	Qty.
12*10X-WX	1410m ³ /hr	35m	1.04ton/m ³	640rpm	270KW/6P*6000V/50HZ TEFC	6
10*8X-WX	1080m ³ /hr	35m	1.04ton/m ³	700rpm	185KW/6P*6000V/50HZ TEFC	6
10*8X-WX	1080m ³ /hr	30m	1.04ton/m ³	655rpm	160KW/6P*6000V/50HZ TEFC	6
6*4X-WX	180m ³ /hr	35m	1.04ton/m ³	1230rpm	55KW/6P*380V/50HZ TEFC	4
10*8X-WM	660m ³ /hr	30m	1.04ton/m ³	830rpm	90KW/6P*380V/50HZ TEFC	4





Client: Vale/ Posco/Dongkuk

Contractor: POSCO E&C

Project: Brazil CSP Steel Plant

Location: Brazil

Model	Capacity (m ³ /hr)	Head (m)	Slurry Density (ton/m ³)	Pump Speed	Motor	Qty.
12*10X-WX	1410m3/hr	35m	1.04ton/m3	640rpm	270KW/6P*6600V/60HZ TEFC	6
10*8X-WX	1080m3/hr	35m	1.04ton/m3	700rpm	185KW/6P*6600V/60HZ TEFC	6
10*8X-WX	1080m3/hr	30m	1.04ton/m3	655rpm	160KW/6P*6600V/60HZ TEFC	6
6*4X-WX	180m3/hr	35m	1.04ton/m3	1230rpm	55KW/6P*460V/60HZ TEFC	4
10*8X-WM	660m3/hr	30m	1.04ton/m3	830rpm	90KW/6P*460V/60HZ TEFC	4



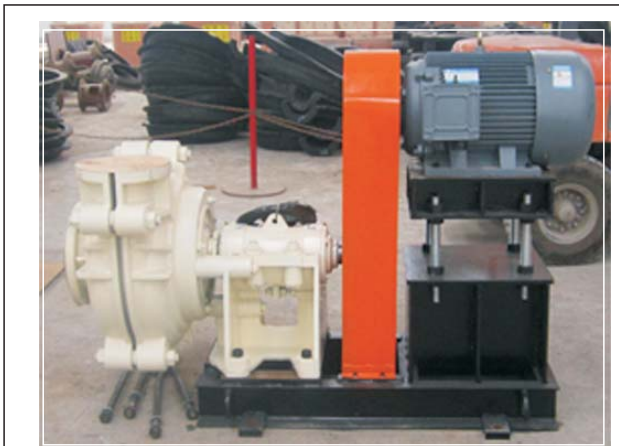


Client: *Paracala Gold*

Project: *Benguet Gold Project*

Location: *Philippines*

Model	Capacity (m ³ /hr)	Head (m)	Slurry Density	Pump Speed (rpm)	Motor	Qty.
4*3C-WX	66.6m ³ /hr	9.3m	1.55ton/m ³	1000rpm	HM2-132S-4-5.5/400V/60Hz/IP55	1
1.5P-VCR	18m ³ /hr	7m	1.26ton/m ³	1300rpm	HM2-100L1-4-2.2/400V/60Hz/IP55	1
6*4D-WX	252m ³ /hr	17.5m	1.15ton/m ³	970rpm	HM2-200L-4-30/400V/60Hz/IP55	2
6*4D-WX	202m ³ /hr	28m	1ton/m ³	1130rpm	HM2-200L-4-30/400V/60Hz/IP55	2
6*4D-WX	222.5m ³ /hr	28.4m	1.55ton/m ³	1150rpm	HM2-225S-4-37/400V/60Hz/IP55	2
2.5Q-VCR	36m ³ /hr	11.9m	1.46ton/m ³	970rpm	HM2-160M-6-7.5/400V/60Hz/IP55	1
100SPH	230m ³ /hr	59m	1.55ton/m ³	1200rpm	HM2-315S-4-110/400V/60Hz/IP55	2
100SPH	230m ³ /hr	57m	1.41ton/m ³	1180rpm	HM2-315S-4-110/400V/60Hz/IP55	2
2*1.5B-WX	14.4m ³ /hr	4.6m	1.05ton/m ³	1000rpm	HM2-90L-4-1.5/400V/60Hz/IP55	1
1.5P-VCR	18m ³ /hr	4.5m	1.05ton/m ³	1100rpm	HM2-90L-4-1.5/400V/60Hz/IP55	1
1.5*1B-WX	14.4m ³ /hr	29m	1.05ton/m ³	2600rpm	HM2-132S1-2-5.5/400V/60Hz/IP55	2





ATLAS PUMP

ATLAS PUMPS ON SITE

**MINING
COAL WASHING
FGD
TUNNEL
DREDGING
METALLURGY
CHEMICAL**

www.atlas-pump.com



ATLAS PUMP

Mining



Copper mine

the National Copper Corporation of Chile





Maanshan Iron&Steel Company Limited

Steel metallurgy-Tailing



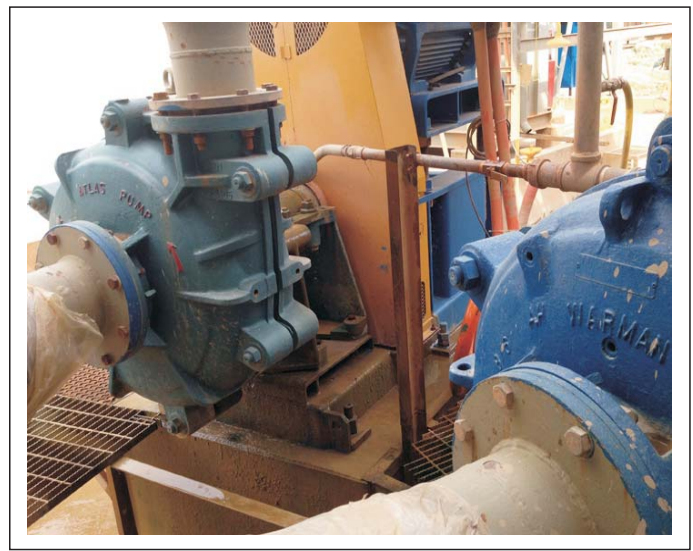


ATLAS PUMP

Mining



RAGM Gold Mine-Malaysia



Gold Mine-Malaysia





ATLAS PUMP

Metallurgy

posco

Posco Engineering & Construction Company

Posco Steel Plant-Indonesia



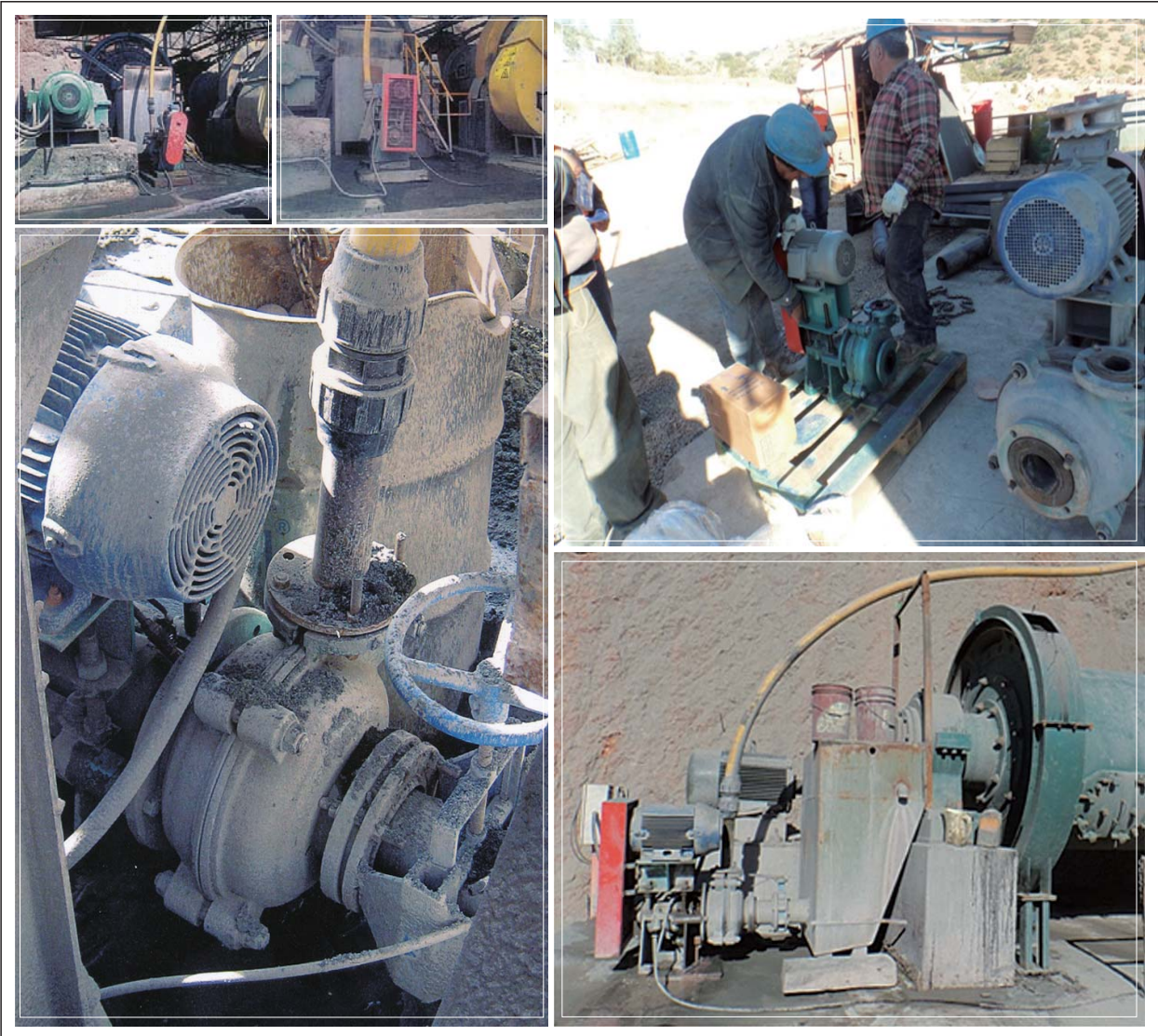


Mining

ATLAS PUMP

SAN PEDRO
minera

Copper mines- South America



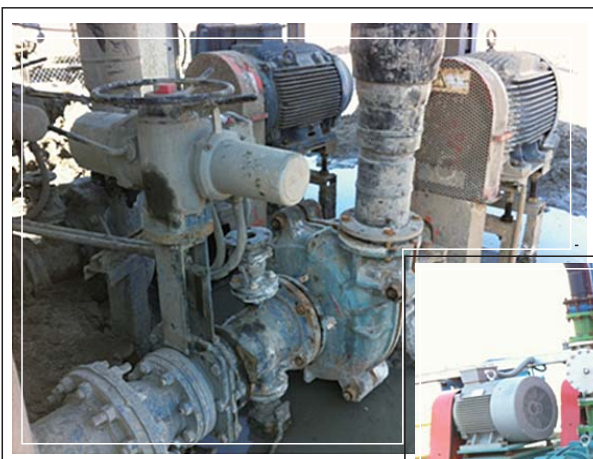


ATLAS PUMP

Mining



Copper mines

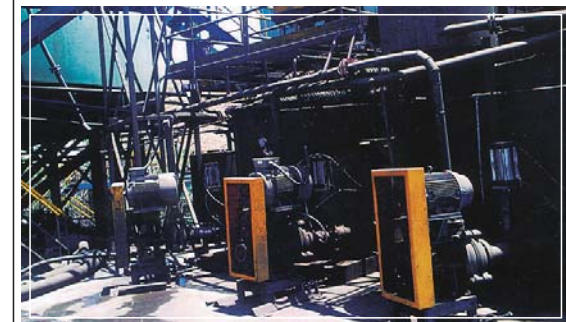
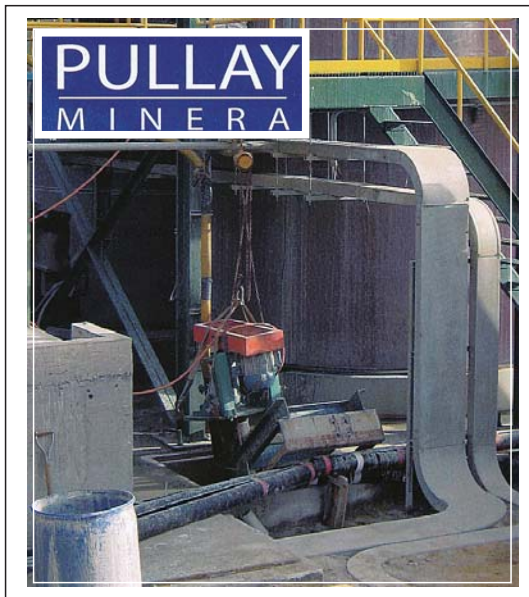
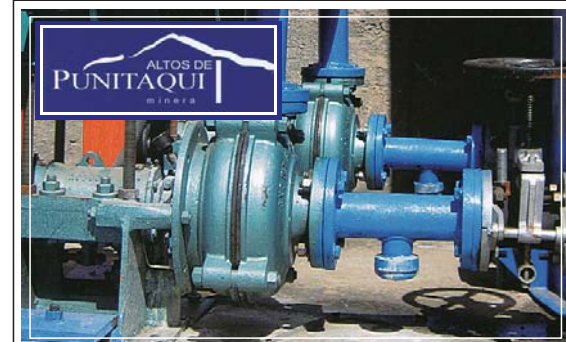
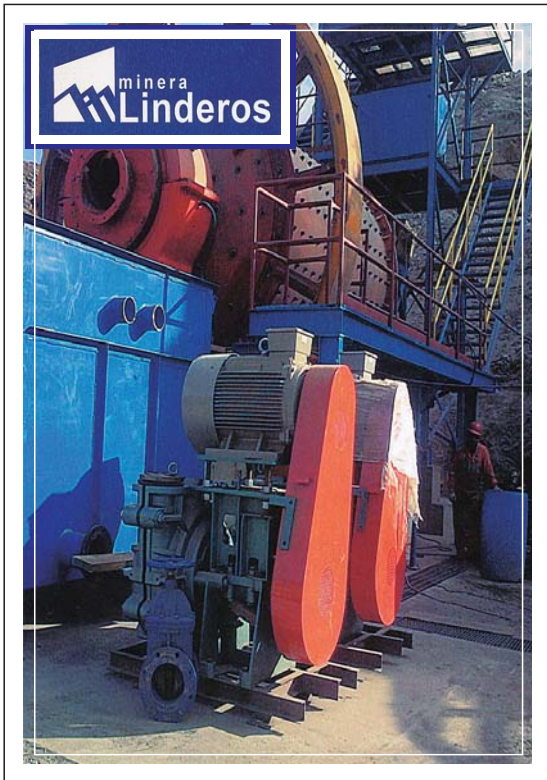




ATLAS PUMP

Mining

Copper mines- South America



ATLAS PUMP

**Building
Material**



Star USG (USA) Building Material Company

Plaster Transportation



PumpRite, Inc.

Sales@pumprite.com

630-543-7867

www.pumprite.com