

Lower Amazon Creek Wetland Restoration and Enhancement Project

Existing Wetlands Map

Updated June 1999

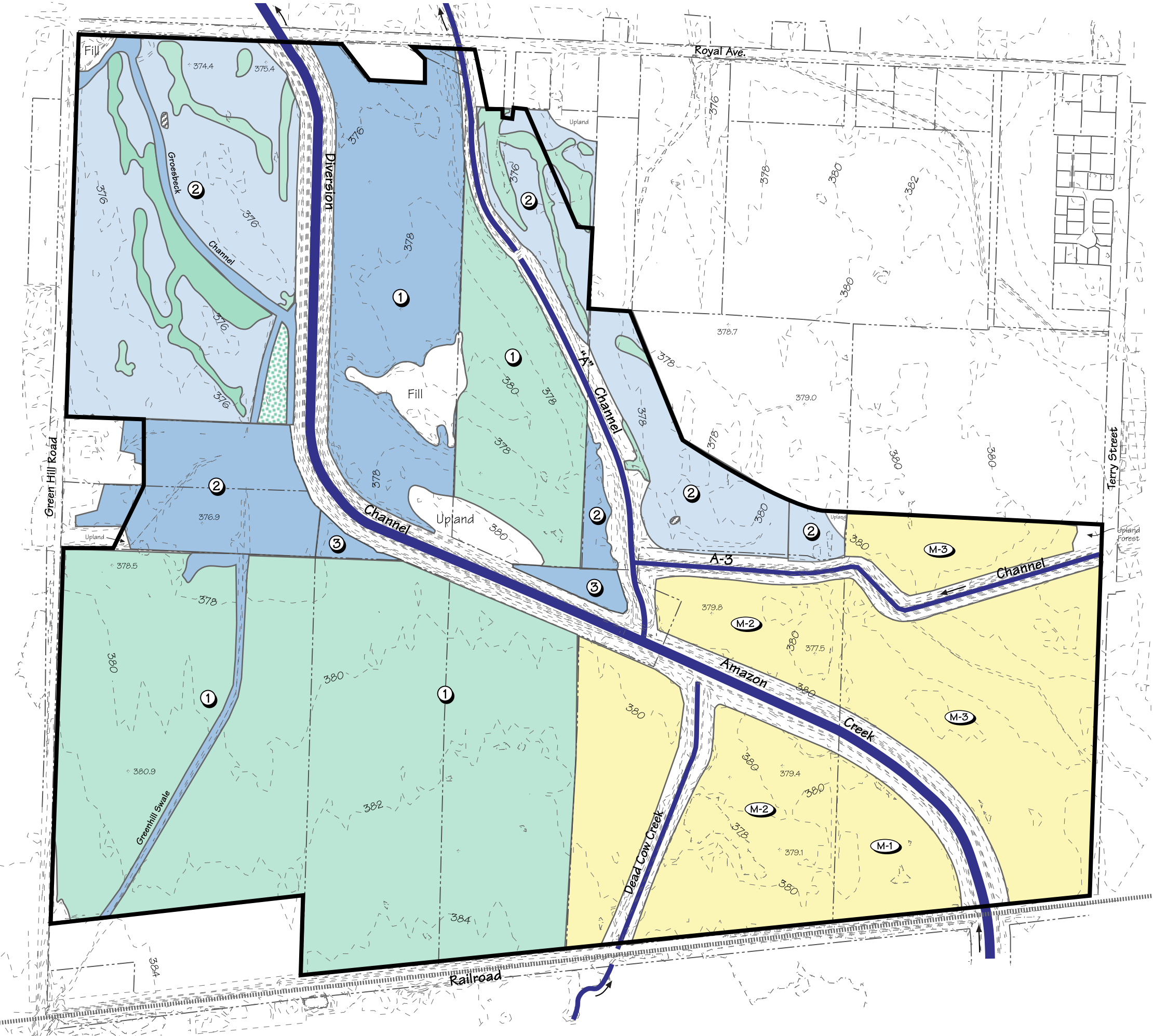
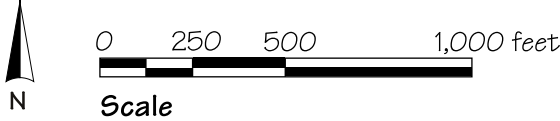
Key

- Existing Tax Lot Lines
- Site Boundary
- - - Contour Line (2-foot interval)
- Wetland
- Prior Converted Cropland (PC)
- Farmed Wetland
- Pasture Wetland
- Existing Mitigation Site (Existing/Future Wetland)
- Upland

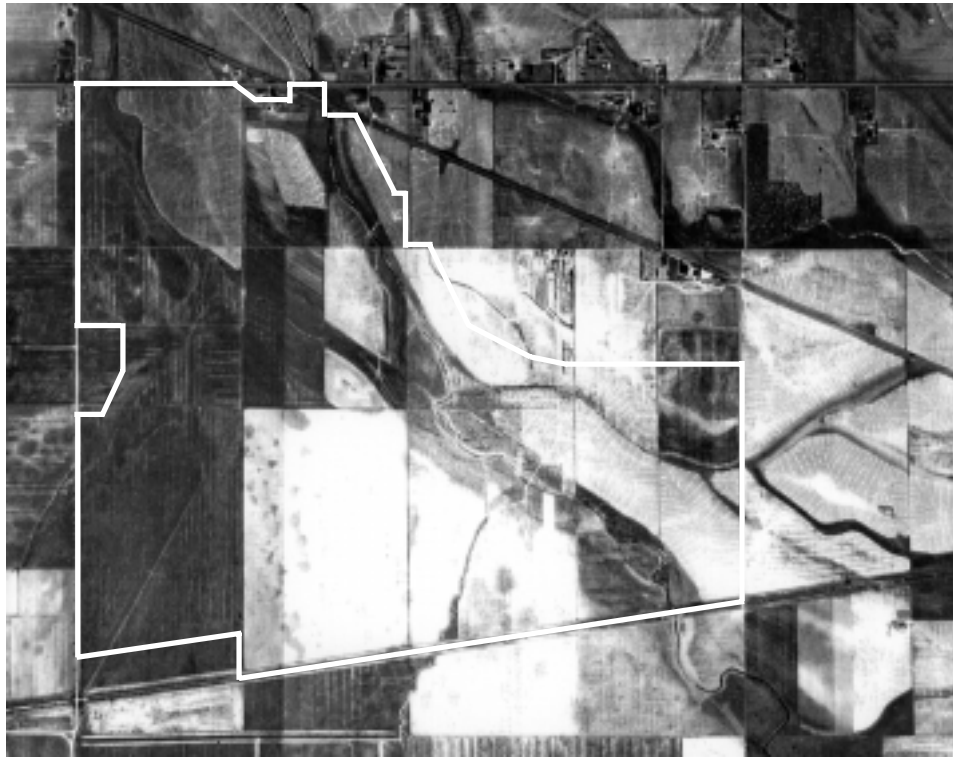
- Wetland Delineation Source:**
- ① Satre Associates, July 1998
 - ② WET Inc., August 1997
 - ③ Satre Associates, May 1999

- Existing Wetland Mitigation Sites:**
- (M-1) Summer Oaks Business Park Mitigation Site
 - (M-2) Spectra Physics Mitigation Site
 - (M-3) Greenhill Technology Park Mitigation Site

Note: This plan shows the approximate location of delineated wetlands. See the delineation reports listed above for more precise locations and description of wetland boundaries.



Lower Amazon



1936



1952



1968



1977



1992

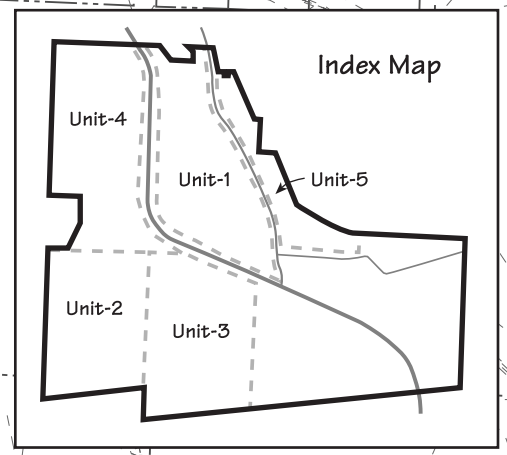
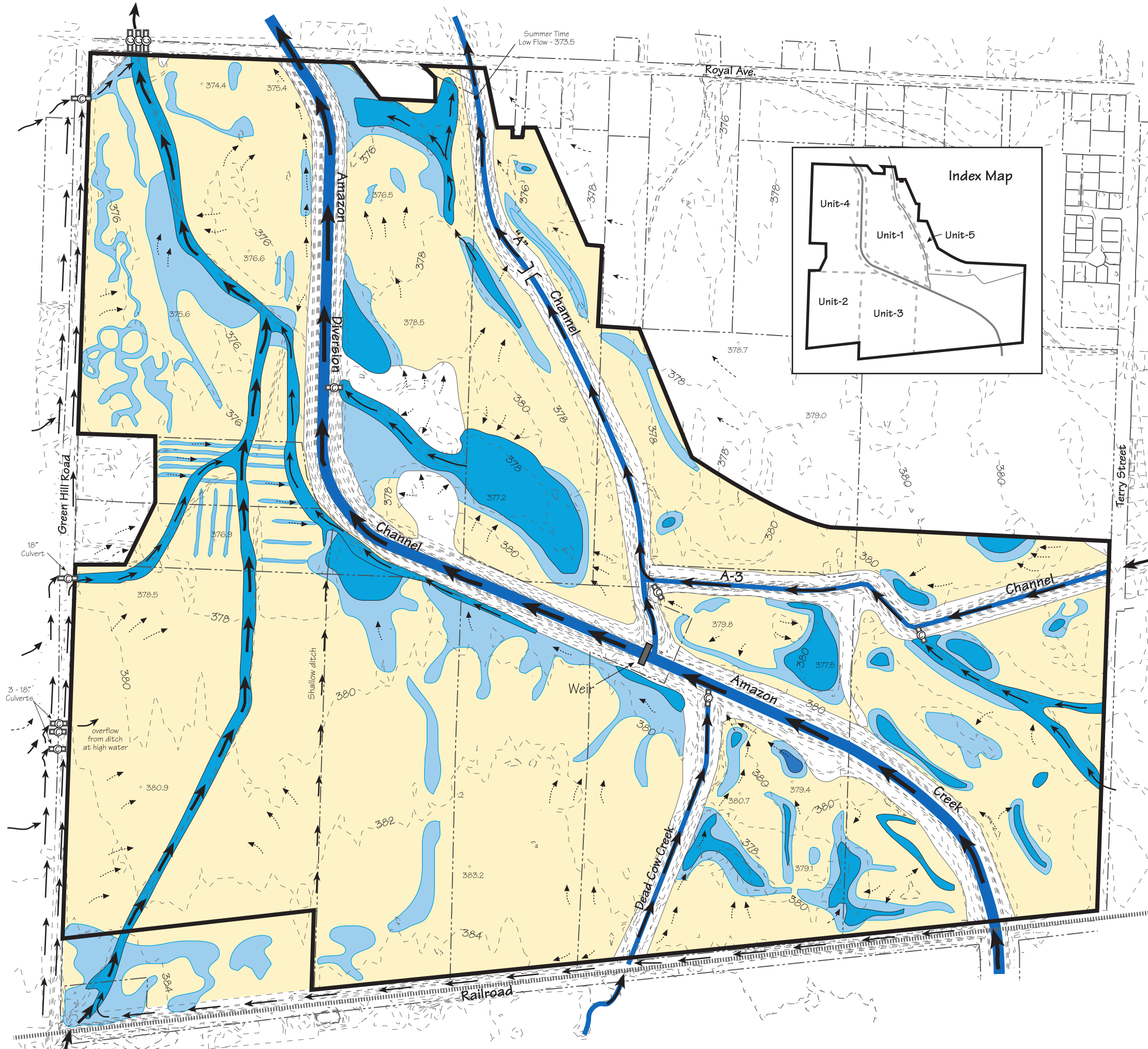


1998

Lower Amazon Creek Project

Existing Surface Hydrology

February 1999

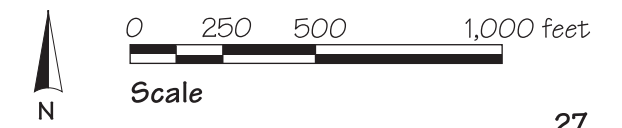


- Key**
- Existing Tax Lot Lines
 - Site Boundary
 - Contour Line (2-foot interval)
 - Existing Culvert

- Site Drainage**
- Low Flow
 - Medium Flow
 - High Flow
 - Sheet Flow

- Surface Moisture**
- Emergent Area** - significant areas of standing or flowing water more than 6" in depth
 - Surface Inundation** - significant areas of standing and flowing water generally less than 6" in depth
 - Saturated Soils** - surface saturation with some standing water up to 1" in depth
 - Little Surface Saturation** - no standing or flowing water

Note: The plan represents an average of conditions observed in March and April of 1998.

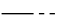

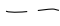








Lower Amazon Creek Wetland Restoration and Enhancement Project

Existing Wetlands Map

Updated June 1999

Key

-  Existing Tax Lot Lines
-  Site Boundary
-  Contour Line (2-foot interval)
-  Wetland
-  Prior Converted Cropland (PC)
-  Farmed Wetland
-  Pasture Wetland
-  Existing Mitigation Site (Existing/Future Wetland)
-  Upland

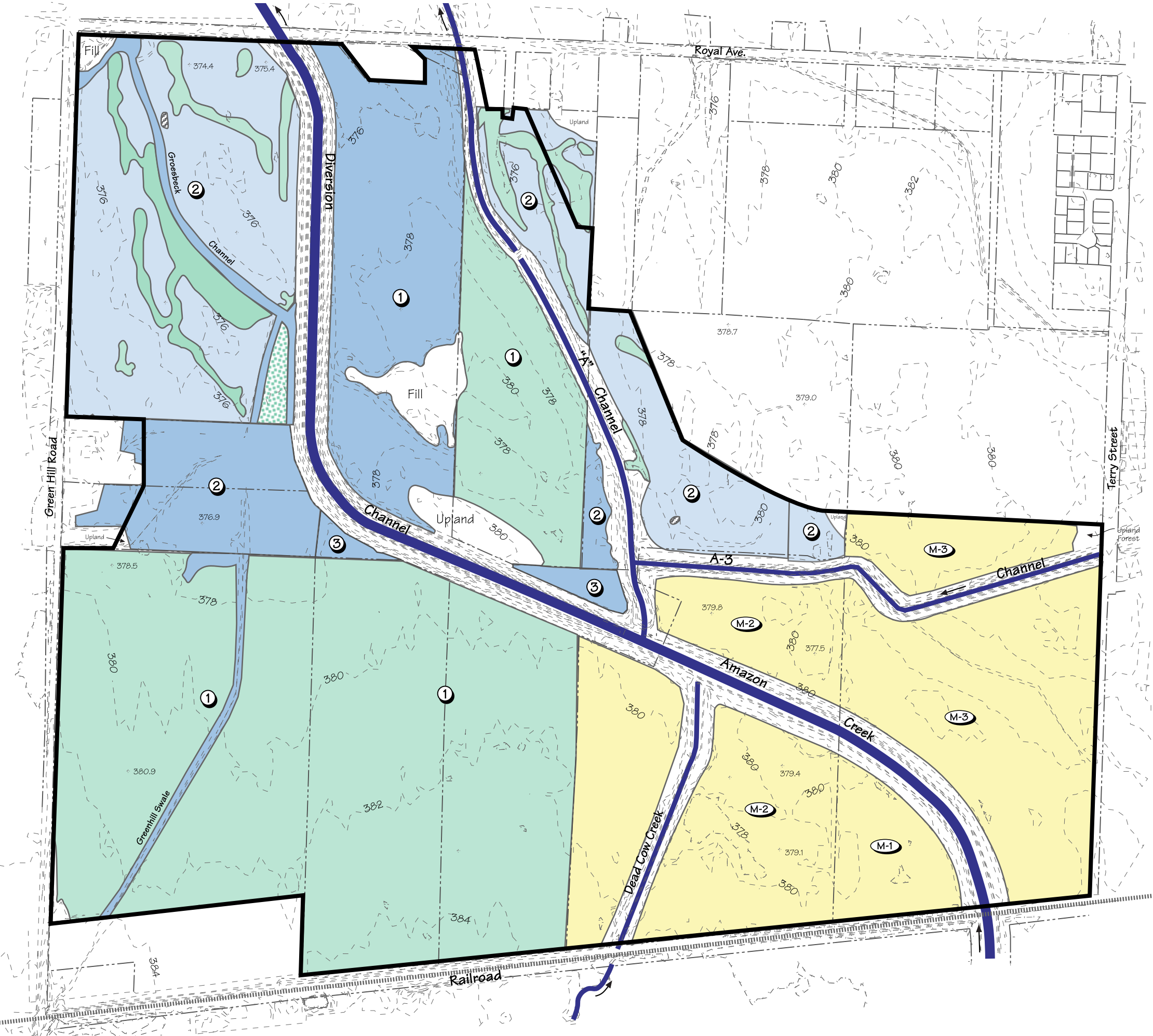
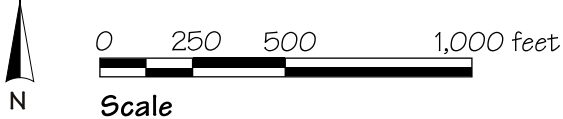
Wetland Delineation Source:

-  Satre Associates, July 1998
-  WET Inc., August 1997
-  Satre Associates, May 1999

Existing Wetland Mitigation Sites:

-  Summer Oaks Business Park Mitigation Site
-  Spectra Physics Mitigation Site
-  Greenhill Technology Park Mitigation Site

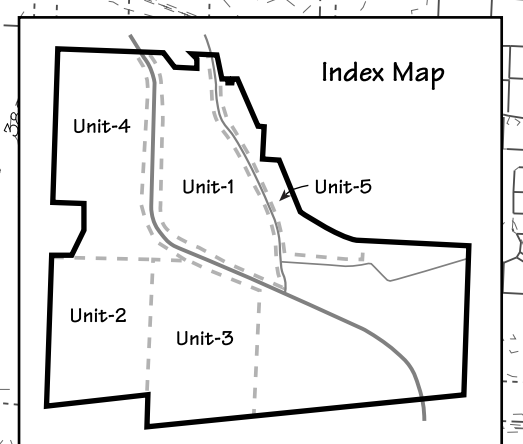
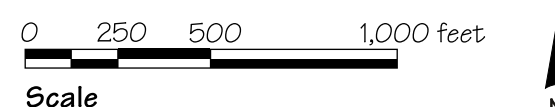
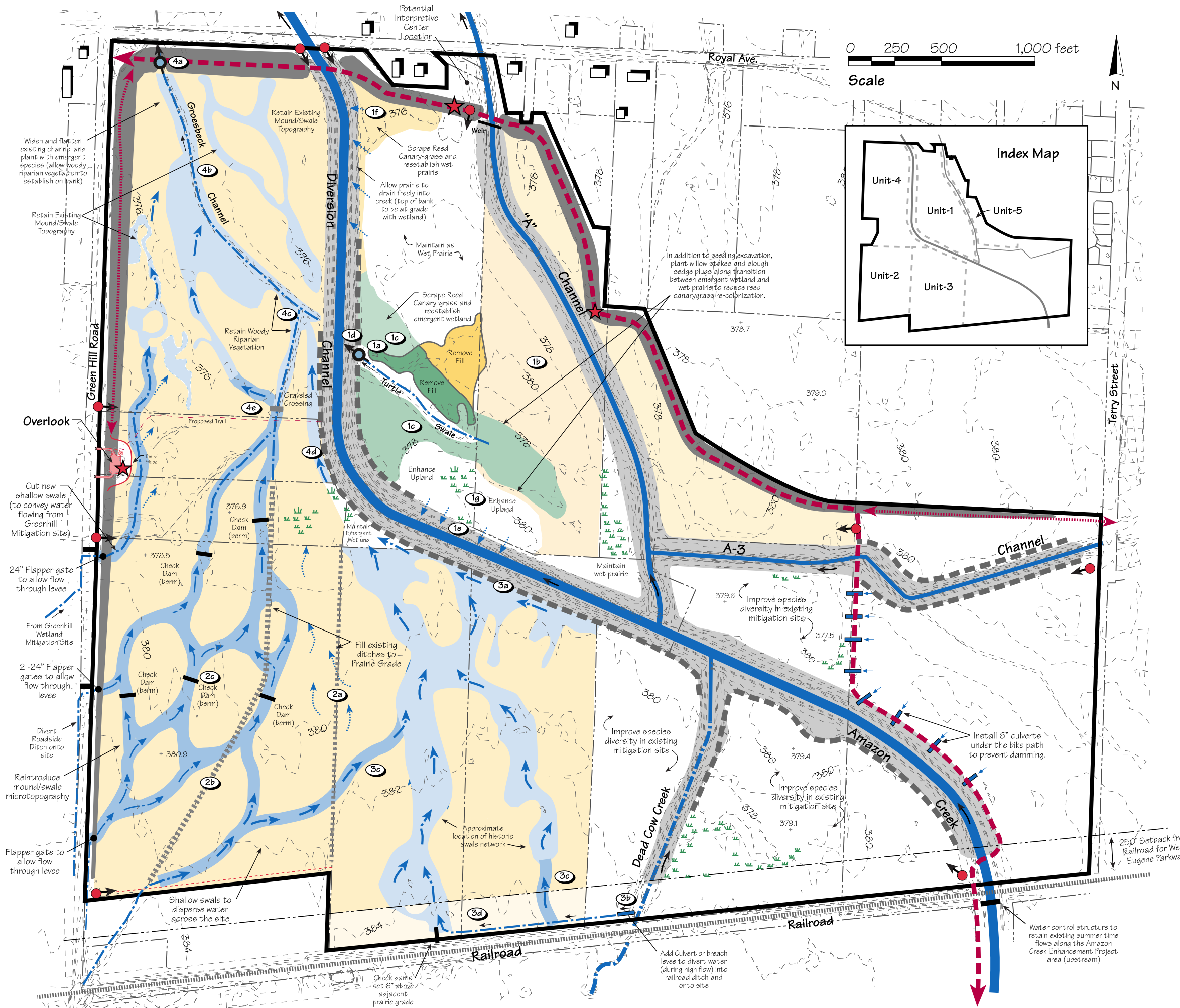
Note: This plan shows the approximate location of delineated wetlands. See the delineation reports listed above for more precise locations and description of wetland boundaries.



Lower Amazon Creek Wetland Restoration and Enhancement Project

Action Plan

February 22, 1999

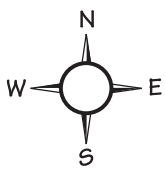
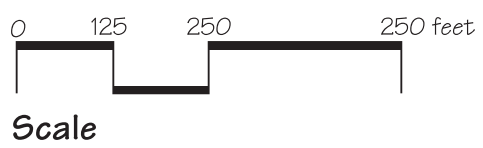


- Key**
- Existing Tax Lot Lines
 - Site Boundary
 - - - Existing Contour Lines
 - Perennial Waterway
 - - - Intermittent Waterway
 - Existing Building
 - Corps 1135 Levee Removal (Phase-I)
 - Corps 1135 Replacement Levee (Phase-I)
 - 🌿 General Location of Rare Plant Populations (see Rare Plant Survey for detailed info.)
 - Planned Fern Ridge Bike Path
 - ⋯ Other Potential Bike Path Connections
 - Ⓢ Design Narrative Key (see text)
- Proposed Actions**
- 🟡 Wet Prairie Enhancement/Restoration (conversion of agricultural land to wetland)
 - 🟠 Wet Prairie Restoration (fill removal)
 - 🟤 Wet Prairie Enhancement (pending parkway)
 - 🟦 Emergent/Vernal Pool Wetland Restoration (recreation of mound/swale topo.)
 - 🟩 Emergent Wetland Restoration (fill removal)
 - 🟪 Emergent Wetland Enhancement (scrape, deepen, and replant)
 - 🟫 Emergent Wetland Enhancement (reestablish emergent plant community in existing depressions)
 - ➡ Generalized Sheet Flow
 - 🚧 New Culverts
 - 🛑 Check Dams
 - 📍 Designated Maintenance Access Point
 - 🔍 Water Control Structure
 - 📏 6" lip to be retained along channel to maintain wetland hydrology (to be complete w/1135 proj.)
 - ★ Designated View Points



Turtle Swale (Phases I and II)
As-construct Wetland Mitigation Plan

September 2002



Key:

- Phase I (summer 2001):
Wetland Enhancement (5.52 acres)
- Wetland Restoration (4.55 acres)
- Phase II (summer 2002):
Wetland Enhancement (10.80 acres)
- Wetland Restoration (0.82 acres)
- Emergent Wetland

Aerial Photo Base: May 2002