



Made in USA

Ideal Cooking Products Shish Kabab Broilers unique compact all welded design offers an easy to fit product in any Mediterranean Cuisine and maximizes space to satisfy the most demanding needs and assuring optimal performance and low operating and maintenance costs. With high efficiency BTU's burners these broilers drip down the meat juices onto the radiants to ear the flames and smoke a unique flavor. Model ranging from 24" to 84" width are available. Ideal Cooking Products Counter top Line-up align perfectly with other Ideal Products on height, depth and other design alike features.

STANDARD FEATURES

- Heavy gage stainless steel exteriors.
- 14ga. Stainless Steel Skewer Holders.
- Strong inner chassis welded all around.
- 16" Heavy duty cast iron radiant covers evenly transmits the heat to the cooking area.
- High efficient "I" Type burners, rated at 30,000 BTU's., located strategically equally apart.
- All burners are equipped with continuous anti-clogging stainless steel pilots for instant ignition.
- Each burner controlled manually by a heavy duty knob.
- Large capacity welded Stainless Steel full width removable crumb tray.
- Available in 24", 30", 36", 48", 60", 72" and 84" wide models.
- Complies with "NSF/ANSI Std. 4-2009 "Commercial, Rethermalization, and Powered Hot Food Holding and Transport Equipment"
- Conforms to ANSI STD Z83.11 Certified to CSA STD 1.8
- One year parts and labor warranty.

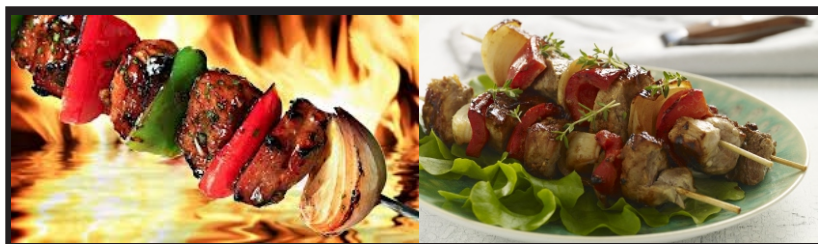


Maybe adding mesquite wood or char rock?

Gas: 3/4" NPT rear gas connection, specify type of gas and altitude if over 2,000 feet.

Pressure: 5" W.C. - Natural Gas
10" W.C. - Propane Gas

Note: Install the pressure regulator supplied with the appliance at the inlet of the gas line.



Model: IDSKB-48



Intertek



Intertek

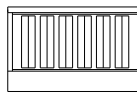


Model: IDSKB-72
(w/ Optional Stand)

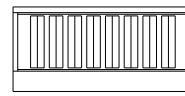
Add \$90.00 for a Set of 4 Casters if required.



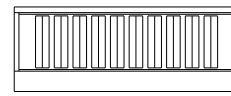
IDSKB-24



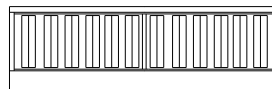
IDSKB-36



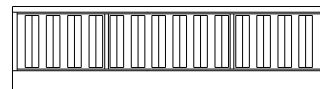
IDSKB-48



IDSKB-60



IDSKB-72



IDSKB-84

Shish Kabba Series

| Model | Dimensions | Weight | Total BTU's/hr | Price List | Equip. Stands |
|----------|--------------------|----------|----------------|------------|---------------|
| | | | | | Price List |
| IDSKB-24 | 24"W x 26"D x 16"H | 275 Lbs. | 120,000 | \$2,230.00 | \$ 395.00 |
| IDSKB-30 | 30"W x 26"D x 16"H | 280 Lbs | 150,000 | \$2,625.00 | \$ 505.00 |
| IDSKB-36 | 36"W x 26"D x 16"H | 355 Lbs | 180,000 | \$3,150.00 | \$ 605.00 |
| IDSKB-48 | 48"W x 26"D x 16"H | 415 Lbs | 240,000 | \$3,940.00 | \$ 810.00 |
| IDSKB-60 | 60"W x 26"D x 16"H | 470 Lbs | 300,000 | \$4,725.00 | \$ 1,010.00 |
| IDSKB-72 | 72"W x 26"D x 16"H | 520 Lbs | 360,000 | \$5,645.00 | \$1,210.00 |
| IDSKB-84 | 84"W x 26"D x 16"H | 600 Lbs | 420,000 | \$6,615.00 | \$1,420.00 |