



# Hernando Beach 2016-2040

Vision & Business Development Plan



**Hernando Beach North  
Direct Gulf Access**

**Weeki Wachee Preserve**

**Boat Lift**

**Hernando Beach  
Central —  
Indirect Gulf Access**

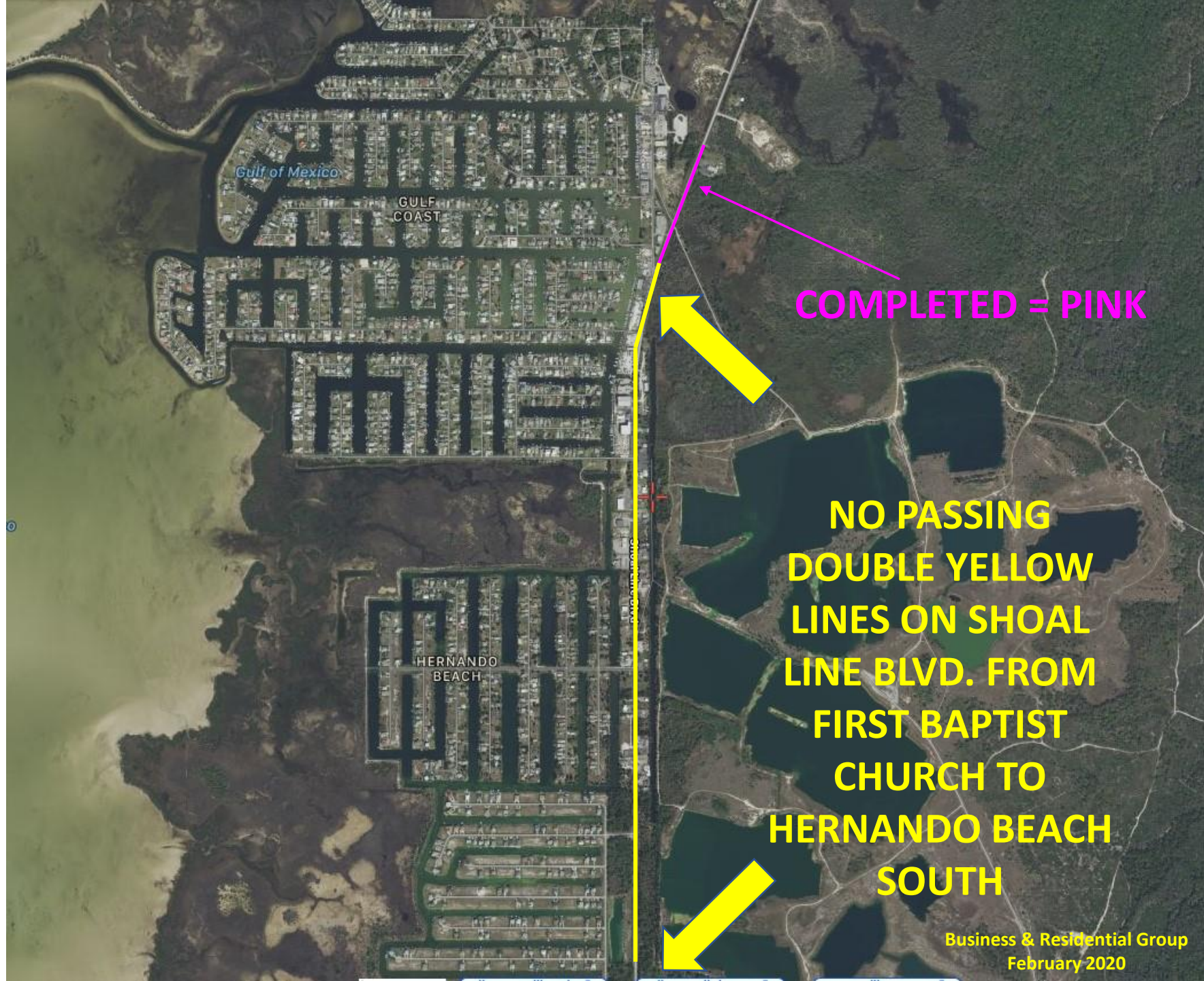
**Hernando Beach South  
Indirect Gulf Access**

**Diane M. Greenwell  
Created 12/21/19**

Rumble Strips



Gunter Woog  
07-14-2020



Gulf of Mexico

GULF COAST

HERNANDO BEACH

COMPLETED = PINK

NO PASSING  
DOUBLE YELLOW  
LINES ON SHOAL  
LINE BLVD. FROM  
FIRST BAPTIST  
CHURCH TO  
HERNANDO BEACH  
SOUTH

# Crosswalk with Solar Flashing Lights At Hermosa & Shoal Line Blvd.







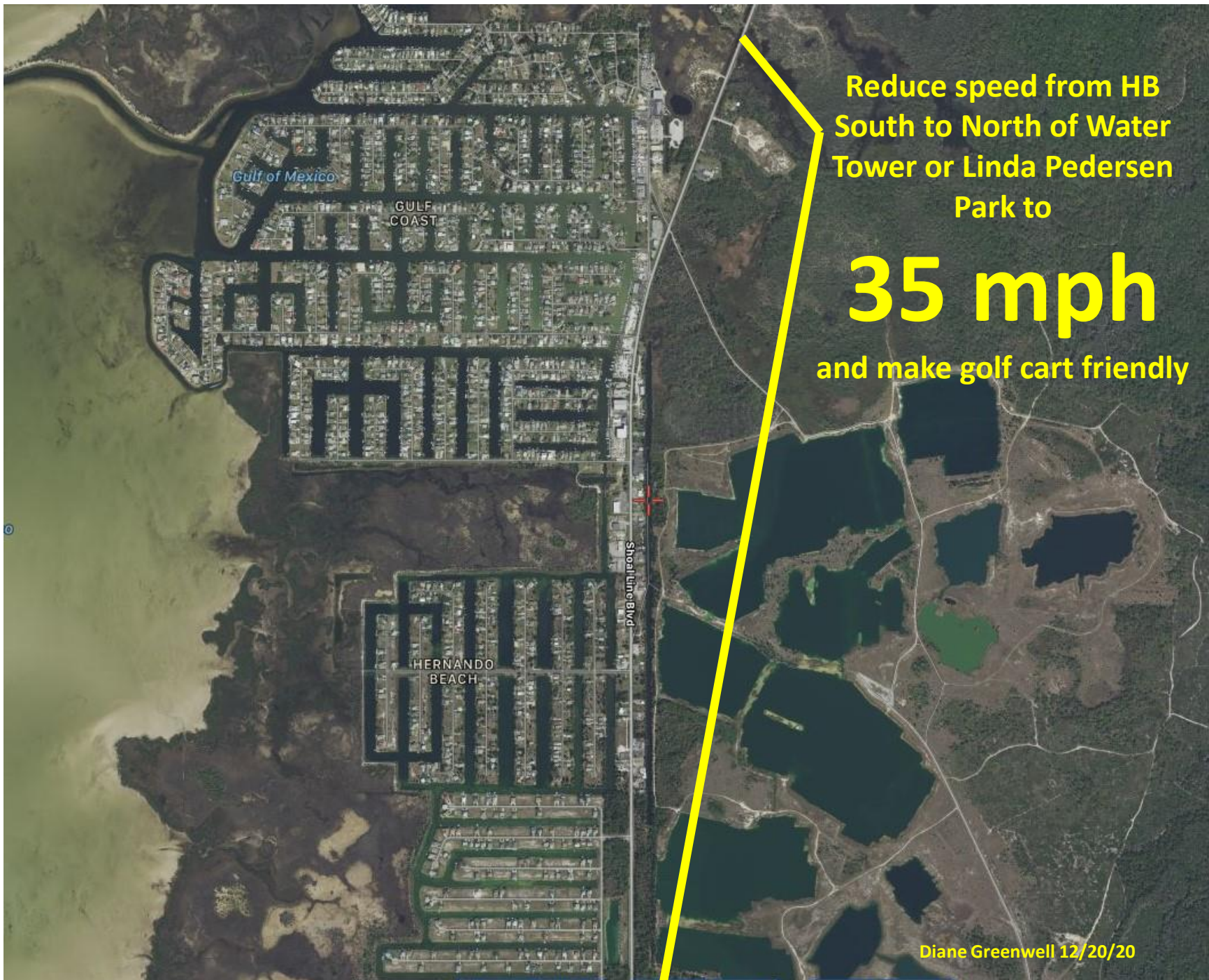
- Add Flashing Lights to current Crosswalk Area

- Add Sidewalk on East Side of Calienta Street

Diane Greenwell  
12/21/2020



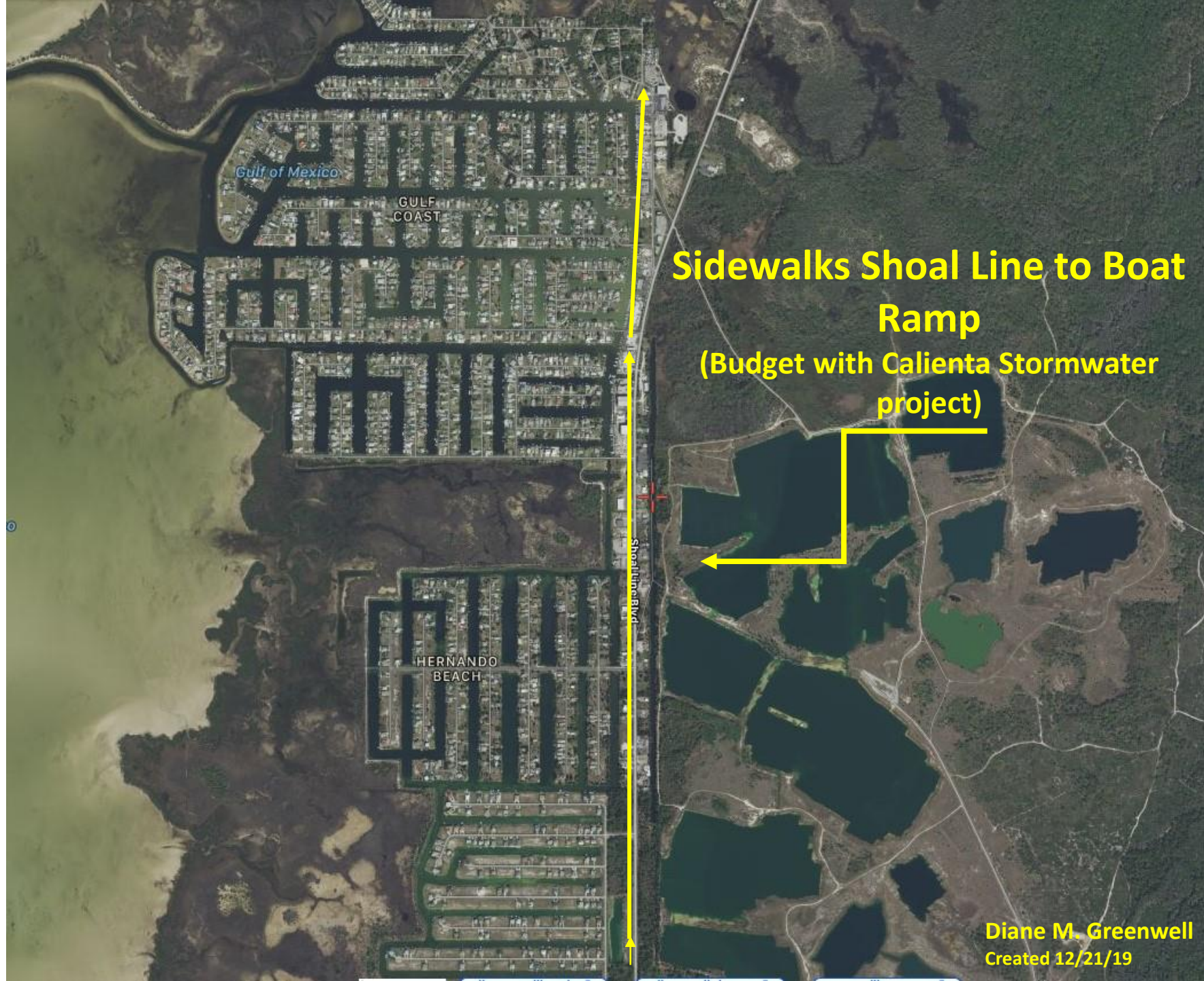




Reduce speed from HB  
South to North of Water  
Tower or Linda Pedersen  
Park to

**35 mph**

and make golf cart friendly



**Sidewalks Shoal Line to Boat Ramp**  
**Ramp**  
**(Budget with Calienta Stormwater project)**

# Exhibit 'A'

## Cardno Bid for Stormwater Drainage



Attachment: Calienta Street - DC Johnson Topographic Survey (16750 : Award of Contract RFQ 19-

Calienta Street is a major local road located in Hernando Beach that runs from Shoal Line Blvd. north to Maplewood Drive. This section of roadway services a commercial and industrial area and provides access to the County boat ramp facility and several residential neighborhoods in Hernando Beach.

Due to the recent maintenance activity on the Hernando Beach Canal, the roadway is seeing increased industrial traffic associated with the commercial fishing industry. In addition, there are frequent forklift crossings both at the marina located on the north end as well as with the seafood packing operation. This is coupled with recreational boat launch traffic utilizing a public boat ramp on the west side and parking on the east side of the roadway. The section of roadway also sees flooding during typical storm events due to the lack of roadside conveyance and treatment with runoff draining directly into the Gulf canals.

The proposed project consists of road widening and stormwater improvements providing pollution abatement for waters draining into the Gulf, neighborhood flood relief, and enhanced traffic safety.

**PRELIMINARY ENGINEERING REPORT (PER) The CONSULTANT shall develop a PER to evaluate:**

- ☐ Typical section including two-lane urban and sidewalk for Calienta Street.**
- ☐ Realignment of Petit Lane to intersect with Shoal Line at right angle**
- ☐ Realignment of Petit Lane to line up with Flamingo Boulevard**
- o Conventional intersection with four way stop.**
- o Roundabout at new intersection of Petit Lane/Flamingo Blvd and Calienta Street.**
- ☐ Alternative safety improvement at Calienta Street and Shoal Line intersection.**
- ☐ Relocation of existing sewage lift station on southeast corner of Calienta Street and Flamingo Boulevard.**

Realigning Petit Lane to eliminate the skewed intersection with Shoal Line on the east end and to line up with Flamingo Boulevard with a roundabout alternative on the west end

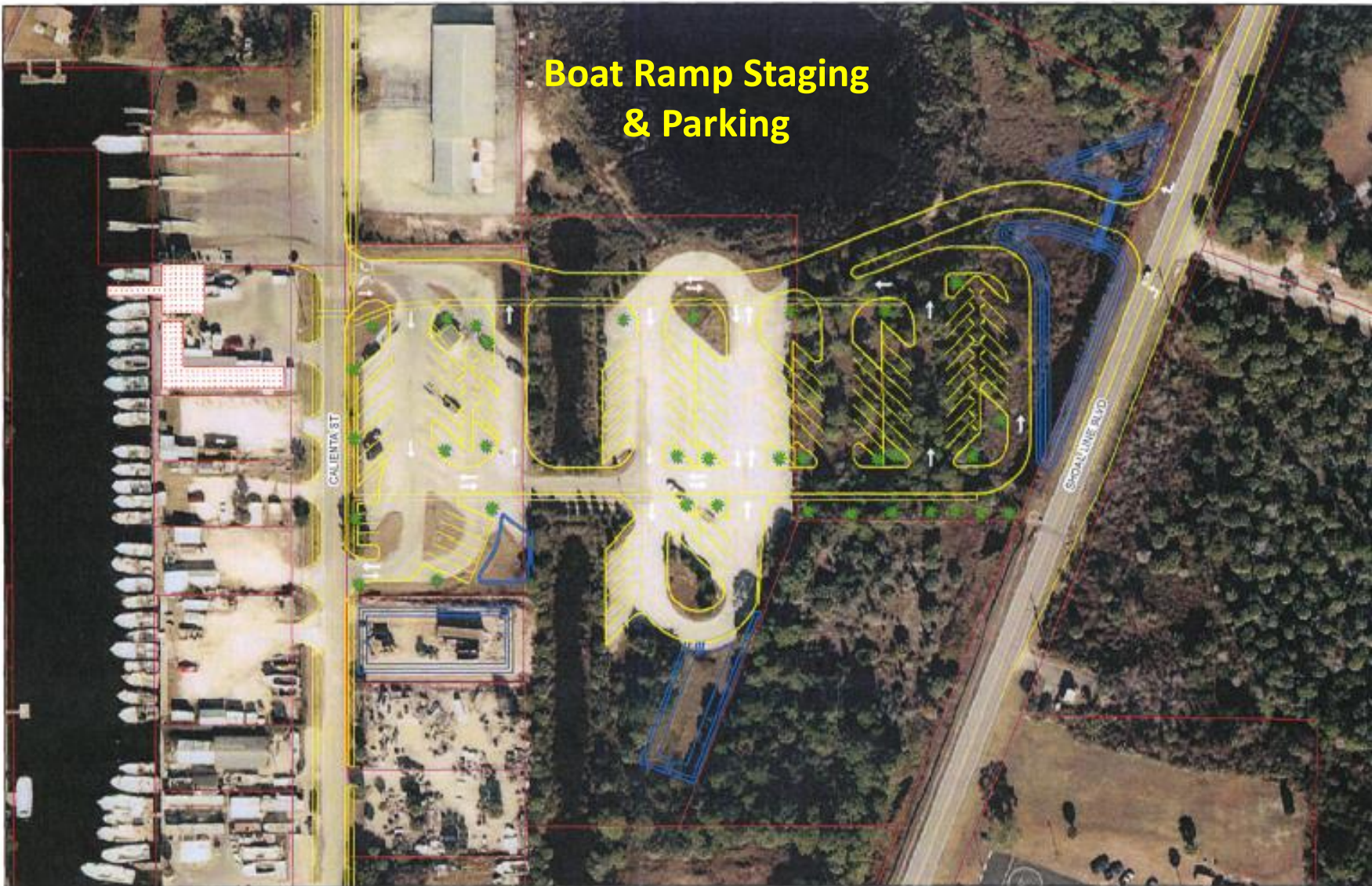
JPG





**Stormwater Run Off on Calienta Street**  
**(Budgeted in 2018 for 2020 in Legislative funding)**

????



**Boat Ramp Staging  
& Parking**

**Hernando Beach Boat Parking  
Proposed Expansion**

Scale - Not To Scale  
 Mapped by - Dept. of Public Works/Engineering Div.  
 Map Date - 6/15/2016



Hernando County Geographic Information System (GIS)  
 Standard Legal Disclaimer

"The information in this database or as represented upon a digital or hard copy format is compiled and/or generated for Hernando County purposes, is not necessarily official, and may not reflect the most recent changes. Accordingly, users of this information in all its uses and forms, and Hernando County hereby disclaims any liability for claims, damages, injury, or loss of any kind that may result from use of, or reliance upon, the information herein for any purpose whatsoever."

*5/27/16 Brian Malmberg, Mark Tuttleman, Fred O'Leary, Public Works Project Meeting*

**Boardwalk  
Behind Commercial  
Businesses on East Side of Shoal  
Line Blvd. Connecting with  
Boardwalk to Linda Pedersen  
Park**



Diane M. Greenwell  
Created 12/21/19





**Crepe Myrtles or  
other Florida  
native flowering  
shrubs along  
Shoal Line Blvd.  
for Color**






# Commercial Marine CM-2

(All commercial  
Fishing Vessels over 26',  
Commercial  
Processing and/or Commercial  
Fishing Activity) must stay north  
of  
Flamingo Blvd.

Diane M. Greenwell  
Created 12/21/19



**Commercial Recreational  
Charters CM-1  
Restricted size, usage,  
hours of operation**



**Change rear and side setback requirements on Commercial Properties on Shoal Line Blvd. & Calienta Street to allow maximum use of properties.**



**Dedicate the 56 acre  
Water Tower Property  
To Hernando Beach for  
Use as a park: Bocce  
Ball, Dog Park, Volley  
Ball, Parking for Preserve**



## Boardwalk

From Preserve to  
Linda Pedersen Park  
or added Scenic Walks, Biking,  
And additional trails, kayaking  
(see additional slide)

Hernando Beach Vision Plan  
10/25/19



Trail from last cross over to Boardwalk

Last Cross Over to Preserve

Diane M. Greenwell  
Created 10/25/19  
MAP 2

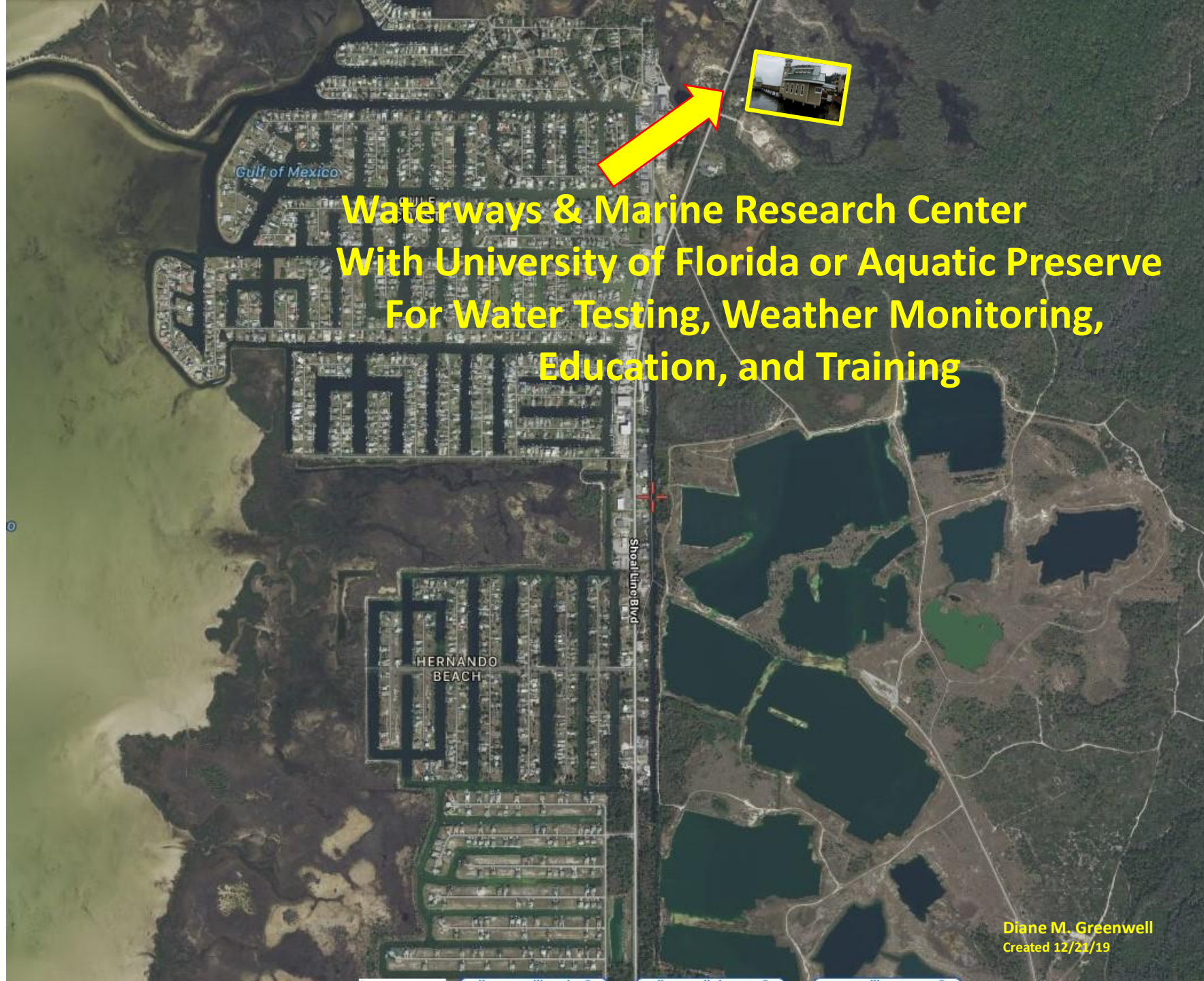
Hernando Beach Vision Plan  
10/25/19



Boardwalk from Water Tower to  
Jenkins Creek – 1 mile

Diane M. Greenwell  
Created 10/25/19  
**MAP 3**





**Waterways & Marine Research Center  
With University of Florida or Aquatic Preserve  
For Water Testing, Weather Monitoring,  
Education, and Training**



## Trolley Bus

Scenic Highway (Shoal Line Blvd)

Pine Island

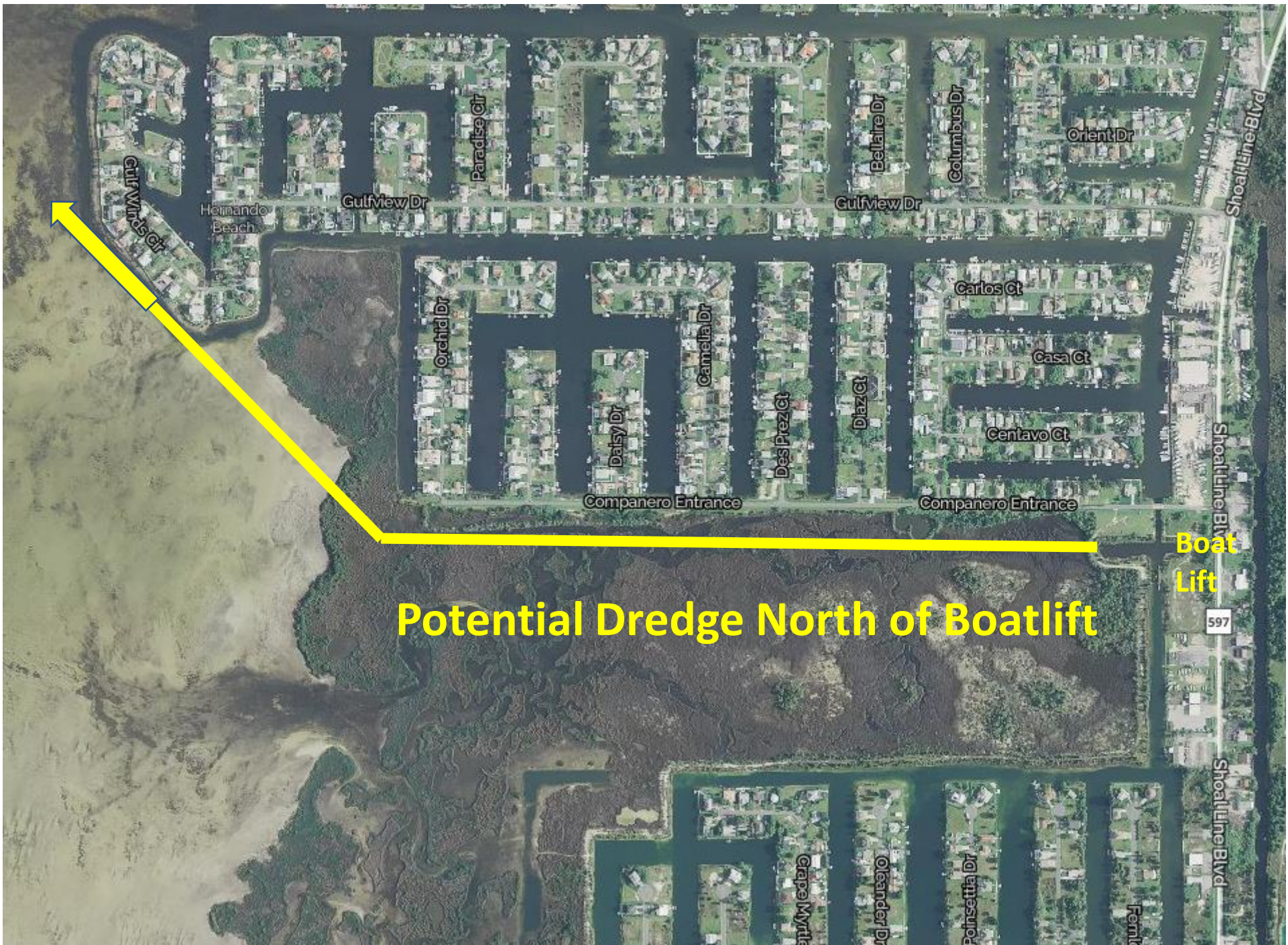
Bay Port

Hernando Beach

Weeki Wachee

Mary's Fish Camp

Diane M. Greenwell  
Created 12/21/19



Potential Dredge North of Boatlift

Boat Lift

