

GlycoAntibiotic Microarray User Manual



Z BIOTECH

Innovative Biochemical Analysis Solutions

Website: <http://www.zbiotech.com/home.html>

Tel: (720) 859-3551

Email: info@zbiotech.com

For Research Use Only

Copyright 2018, Z Biotech, LLC. All Rights Reserved.

Table of Contents

Section	Page
Introduction	3
Handling and Storage	3
Array Map	4
GlycoAntibiotic Identification List	6
Materials Required	9
Assay Protocol	10
Analysis	12
Example Results	13
Troubleshooting	14

Introduction

Antibiotics are our most important agents for fighting bacterial infections, and the emergence of antibiotic-resistant bacteria is becoming a global health crisis that has contributed to the reemergence of diseases that were once well controlled. Antibiotics function by binding to the bacterial ribosome and inhibiting protein synthesis, but their efficacy is affected by binding to plasma proteins and antibiotic-targeting enzymes produced by bacteria. Their ribosome binding abilities also make them candidates as treatments for genetic disorders, HIV, and AIDS.

The GlycoAntibiotic Array is designed to help researchers screen proteins, enzymes, or other influential agents to determine their antibiotic binding targets. This manual is provided as a comprehensive guide to help the researcher acquire clear results from the assay. Please read through carefully before starting your experiment.

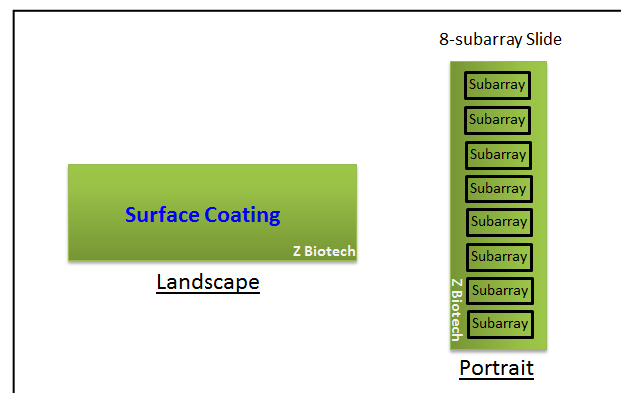
Handling and Storage

Store the bag of slides and any buffers in a 4°C refrigerator if they are to be assayed within 24 hours upon receipt. For long term storage keep the bag of slides at -20°C. Avoid freezing and thawing multiple times. Purchased slides and buffers should be used within 6 months.

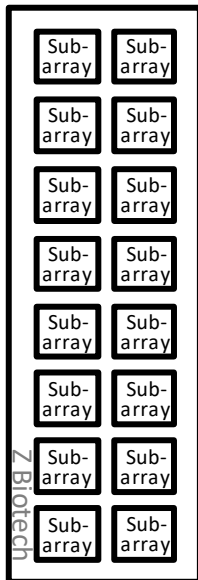
Allow the bag of slides to equilibrate to room temperature at least 20 minutes before opening. After opening, re-seal any unused slides in the moisture barrier bag with a desiccant inside and refreeze. Handle the slides in a clean, dust free environment. Wear gloves and hold the slides on the edges. When adding sample do not touch the pipette tip to the array surface. When removing sample gently touch the pipette tip at the corner of the well of the cassette and tip the slide so that the sample pools to that corner. Avoid contact with the surface of the slides.

Array Map/Schematic

The GlycoAntibiotic array slides have 8 or 16 subarrays depending on the customer's request. Arrays are printed on the side with the "Z Biotech" label facing upward. The "Z Biotech" label is located on the bottom right corner from a landscape point of view, or the bottom left corner in a portrait point of view (see image on right). The orientation of the printed array is consistent with the portrait slide orientation (the "marker" spots will be on the lower right of each array when looking at the slide via the portrait orientation). Dimensions and array map are shown on the following pages.



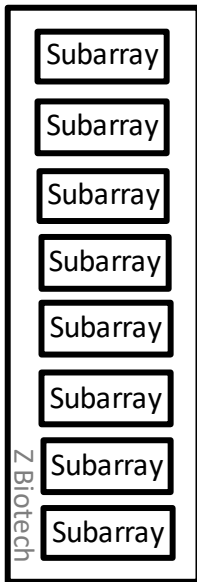
16-subarray Slide



Array Map:

	1	2	3	4	5	6	7	8	9	10	11	12
1	GA-1	GA-1	GA-1	GA-1	GA-1	GA-1	GA-2	GA-2	GA-2	GA-2	GA-2	GA-2
2	GA-3	GA-3	GA-3	GA-3	GA-3	GA-3	GA-4	GA-4	GA-4	GA-4	GA-4	GA-4
3	GA-5	GA-5	GA-5	GA-5	GA-5	GA-5	GA-6	GA-6	GA-6	GA-6	GA-6	GA-6
4	GA-7	GA-7	GA-7	GA-7	GA-7	GA-7	GA-8	GA-8	GA-8	GA-8	GA-8	GA-8
5	GA-9	GA-9	GA-9	GA-9	GA-9	GA-9	GA-10	GA-10	GA-10	GA-10	GA-10	GA-10
6	GA-11	GA-11	GA-11	GA-11	GA-11	GA-11	GA-12	GA-12	GA-12	GA-12	GA-12	GA-12
7	GA-13	GA-13	GA-13	GA-13	GA-13	GA-13	GA-14	GA-14	GA-14	GA-14	GA-14	GA-14
8	GA-15	GA-15	GA-15	GA-15	GA-15	GA-15	GA-16	GA-16	GA-16	GA-16	GA-16	GA-16
9	GA-17	GA-17	GA-17	GA-17	GA-17	GA-17	GA-18	GA-18	GA-18	GA-18	GA-18	GA-18
10	GA-19	GA-19	GA-19	GA-19	GA-19	GA-19	GA-20	GA-20	GA-20	GA-20	GA-20	GA-20
11	GA-21	GA-21	GA-21	GA-21	GA-21	GA-21	GA-22	GA-22	GA-22	GA-22	GA-22	GA-22
12	GA-23	GA-23	GA-23	GA-23	GA-23	GA-23	NC	NC	NC	PC1	PC1	PC1
13	PC2	PC2	PC2	PC3	PC3	PC3	PC4	PC4	PC4	M	M	M

8-subarray Slide



Array Map:

	1	2	3	4	5	6	7	8	9	10	11	12	13	14	15	16	17	18
1	GA-1	GA-1	GA-1	GA-1	GA-1	GA-1	GA-2	GA-2	GA-2	GA-2	GA-2	GA-2	GA-3	GA-3	GA-3	GA-3	GA-3	GA-3
2	GA-4	GA-4	GA-4	GA-4	GA-4	GA-4	GA-5	GA-5	GA-5	GA-5	GA-5	GA-5	GA-6	GA-6	GA-6	GA-6	GA-6	GA-6
3	GA-7	GA-7	GA-7	GA-7	GA-7	GA-7	GA-8	GA-8	GA-8	GA-8	GA-8	GA-8	GA-9	GA-9	GA-9	GA-9	GA-9	GA-9
4	GA-10	GA-10	GA-10	GA-10	GA-10	GA-10	GA-11	GA-11	GA-11	GA-11	GA-11	GA-11	GA-12	GA-12	GA-12	GA-12	GA-12	GA-12
5	GA-13	GA-13	GA-13	GA-13	GA-13	GA-13	GA-14	GA-14	GA-14	GA-14	GA-14	GA-14	GA-15	GA-15	GA-15	GA-15	GA-15	GA-15
6	GA-16	GA-16	GA-16	GA-16	GA-16	GA-16	GA-17	GA-17	GA-17	GA-17	GA-17	GA-17	GA-18	GA-18	GA-18	GA-18	GA-18	GA-18
7	GA-19	GA-19	GA-19	GA-19	GA-19	GA-19	GA-20	GA-20	GA-20	GA-20	GA-20	GA-20	GA-21	GA-21	GA-21	GA-21	GA-21	GA-21
8	GA-22	GA-22	GA-22	GA-22	GA-22	GA-22	GA-23	GA-23	GA-23	GA-23	GA-23	GA-23	NC	NC	NC	NC	NC	NC
9	PC1	PC1	PC1	PC1	PC1	PC1	PC2	PC2	PC2	PC2	PC2	PC2	PC3	PC3	PC3	PC3	PC3	PC3
10	PC4	PC4	PC4	PC4	PC4	PC4							M	M	M	M	M	M

GlycoAntibiotic Identification List:

ID	Antibiotic
NA-1	Amikacin disulfate
NA-2	Kanamycin B
NA-3	Tobramycin
NA-4	Dibekacin sulfate
NA-5	Gentamycin sulfate
NA-6	Sisomicin
NA-7	Netilmicin sulfate
NA-8	Neomycin trisulfate hydrate
NA-9	Paromomycin sulfate
NA-10	Streptomycin sulfate
NA-11	Spectinomycin sulfate tetrahydrate
NA-12	Hygromycin B
NA-13	Vancomycin HCl
NA-14	Kanamycin A
NA-15	Neamine hydrochloride
NA-16	Apramycin Sulfate
NA-17	Oritavancin
NA-18	Ribostamycin sulfate
NA-19	Azithromycin
NA-20	Bleomycin sulfate
NA-21	Toyocamycin
NA-22	Puromycin dihydrochloride
NA-23	Natamycin

Controls

NC: Negative control; print buffer

PC1: Positive control 1; biotinylated mannose (0.01 mg/ml)

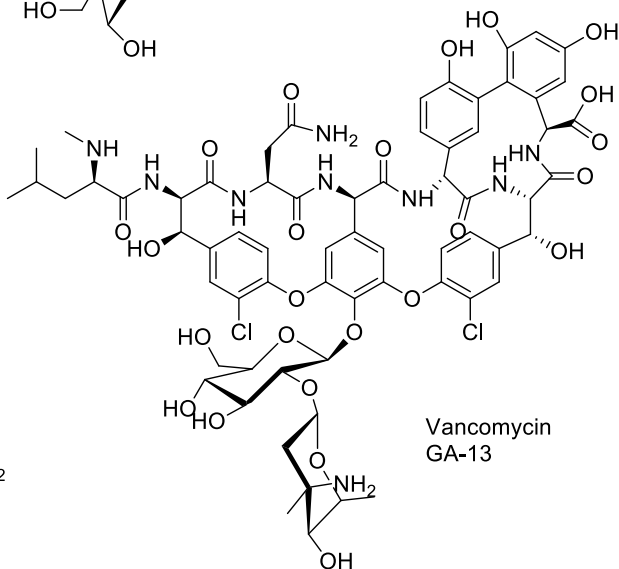
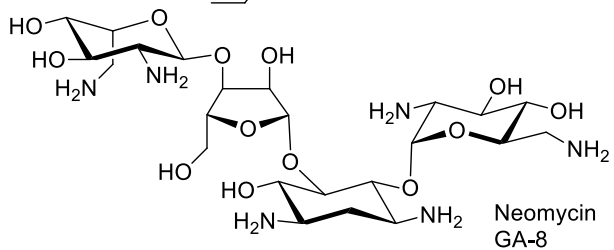
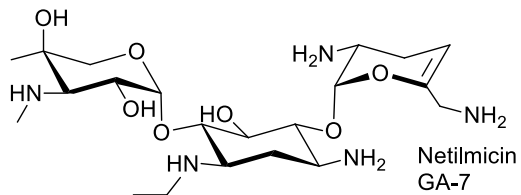
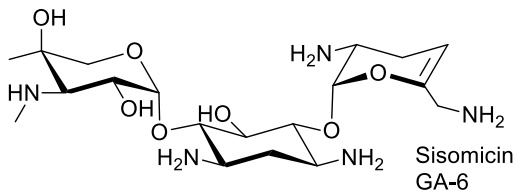
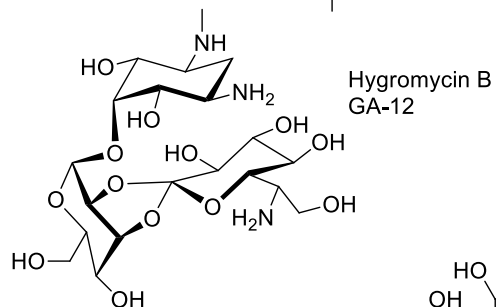
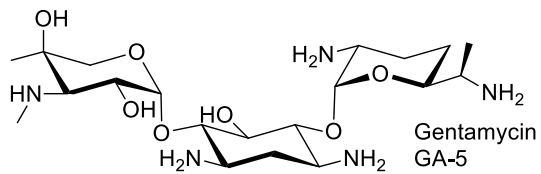
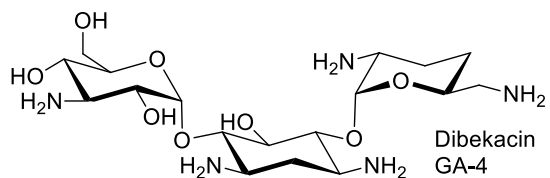
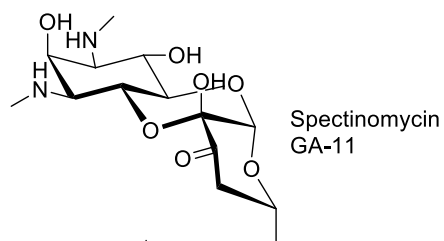
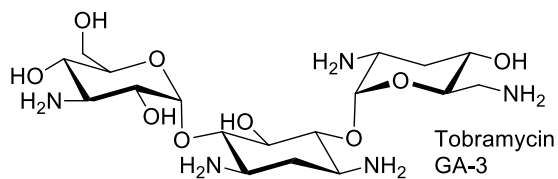
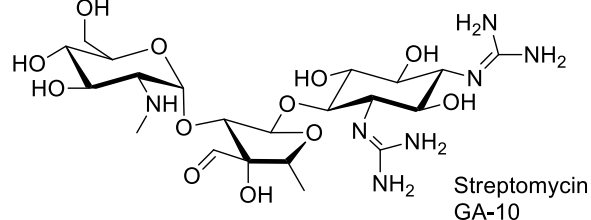
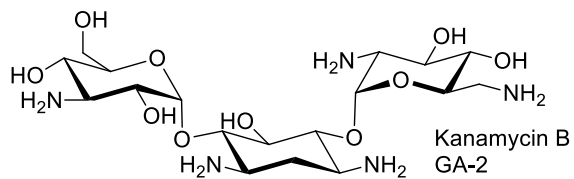
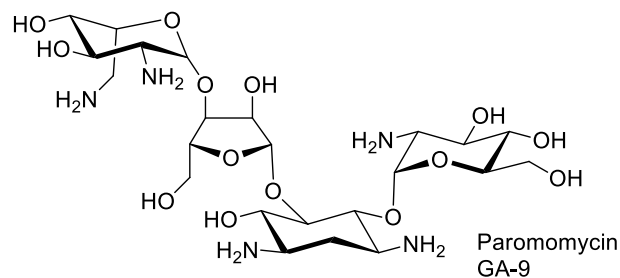
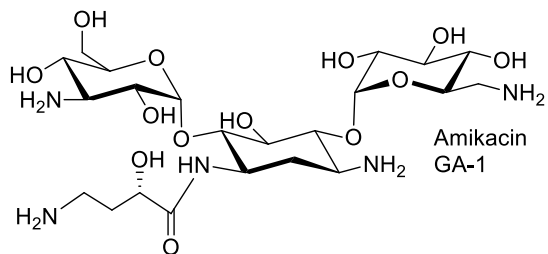
PC2: Positive control 2; human IgG (0.1 mg/ml)

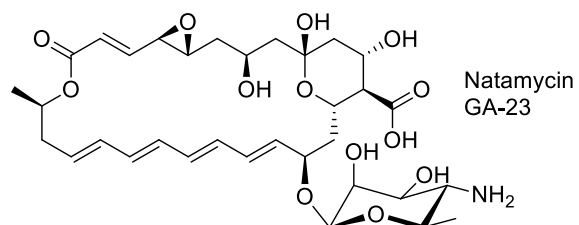
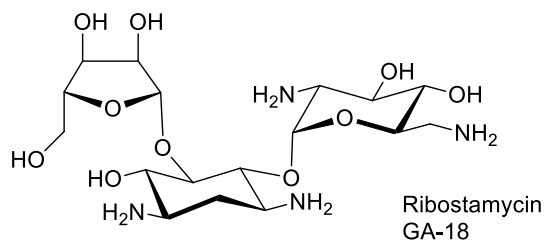
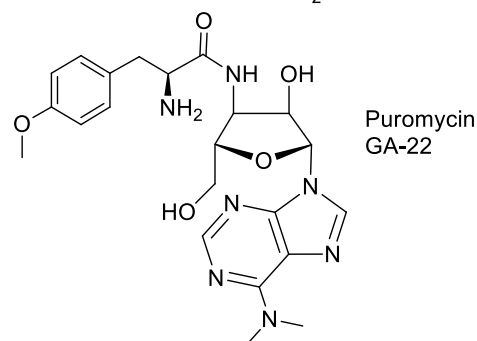
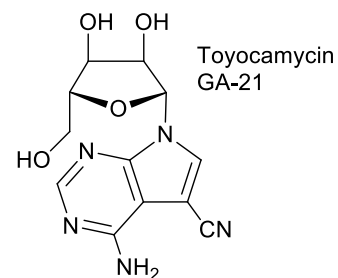
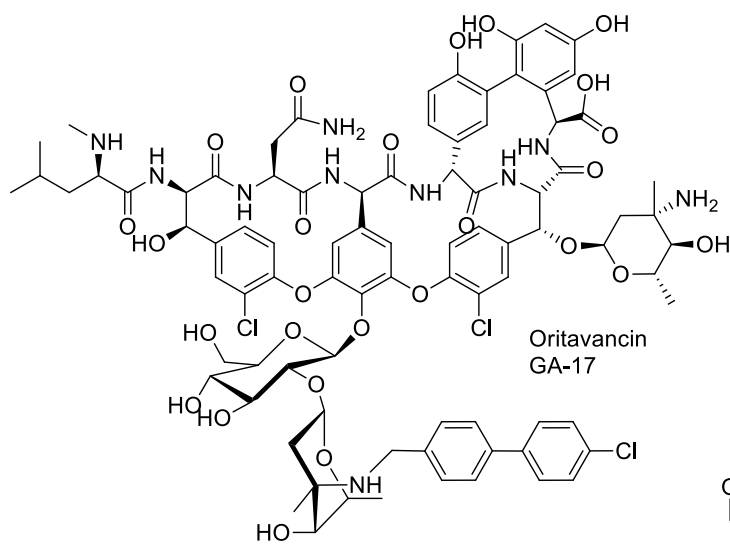
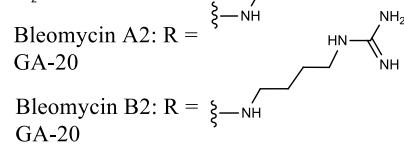
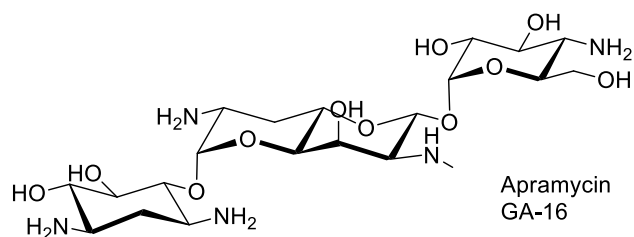
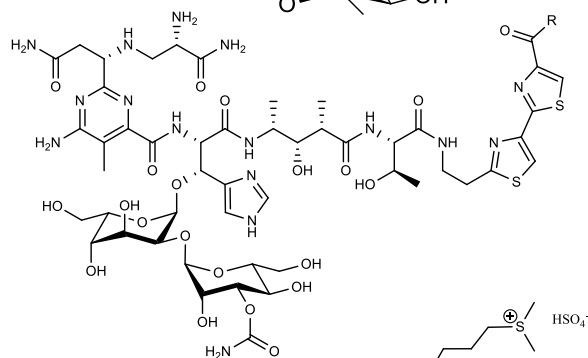
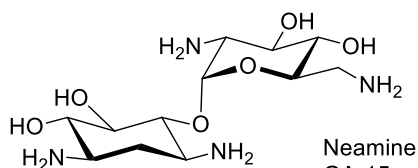
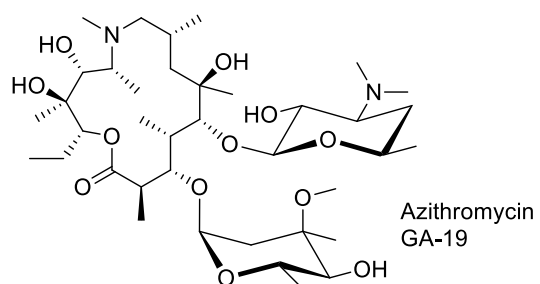
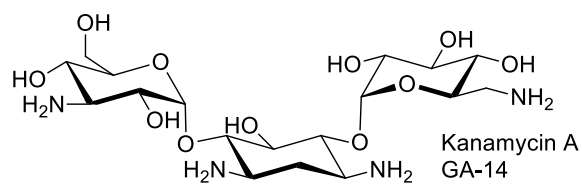
PC3: Positive control 3; mouse IgG (0.1 mg/ml)

PC4: Positive control 4; rabbit IgG (0.1 mg/ml)

Array Marker: anti-Human IgG, Cy3 (0.01 mg/ml) + anti-Human IgG, Alexa647 (0.01 mg/ml)

GlycoAntibiotic Structures





Materials Required

- Arrayed glass slide
- 16 or 8 subarray cassette
- Blocking Buffer (Item #10106)
- Glycan Array Assay Buffer (Item #10107)

*Materials above are included for purchase in our Microarray Kit
(<http://www.zbiotech.com/products.html>)*

- Wash Buffer: 20 mM Tris-HCl, 150 mM NaCl, 0.05% Tween 20, pH 7.6
- Binding samples of interest
- Biotinylated secondary antibodies (for sandwich assay format only)
- Fluorescent labelled streptavidin (for biotin labelled binding samples)
- Sterile de-ionized water
- Orbital shaker
- Laser fluorescence scanner (able to scan at the wavelength of your fluorophore)
- Centrifuge
- Pipettors and sterile pipette tips
- Sterile centrifuge tubes
- Coplin jar or 250mL beaker
- Adhesive slide cover film
- Aluminum foil

Preparation of assay samples:

Prepare binding samples of interest and/or secondary antibodies in a centrifuge tube by diluting with the Glycan Array Assay Buffer. We recommend a range of 50 µg/ml to 0.1 µg/ml concentration for protein samples, although some experimentation may be required to establish the concentration that will provide the highest binding signals with the lowest background fluorescence. This is often accomplished by applying a different dilution of samples to different wells of the array. We also recommend setting up control assays to test detection antibodies or proteins alone in case they have non-specific binding to glycans. For the fluorescently labelled streptavidin we recommend a concentration of 1 µg/mL. Calculate the volume of sample needed depending on how many slides and subarrays are to be assayed. We recommend using 100 µL volume of sample per well for 16 subarray cassettes and 200 µL for 8 subarray cassettes in order to ensure full and even coverage of the printed area throughout incubation. If necessary the assay can be done successfully with a minimal volume of 60 µL per well for 16 subarray cassettes and 80 µL for 8 subarray. We caution that using a minimal volume in the wells has an increased risk of the array drying out during the assay, and may also cause unequal distribution of the sample across the arrayed surface which may result in signal variation. Please ensure each sample is homogeneous and thoroughly mixed.

Assay Protocol

Part 1 – Blocking

Handle the slide in a clean, dry environment. Use gloves and avoid touching the slide surface.

1. Allow the arrayed slides to equilibrate to room temperature (20-30 minutes) before opening the moisture barrier bag. If the slide was ordered with the Microarray Starter Kit it will already have a cassette mounted onto it. If not, affix a cassette to the slide.
2. Add blocking buffer to each subarray well. We recommend using 100 μL per well for 16 subarray cassettes and 200 μL for 8 subarray cassettes in order to ensure full and even coverage of the printed area throughout incubation.
3. Cover the wells with adhesive film to prevent evaporation and incubate slide on shaker at 85 rpm for 1 hour. Longer incubation time is acceptable, but not necessary.

Make sure the orbital shaker is completely flat. If the slide is sloped in any direction during incubation it can cause variation in binding and detection.

Part 2 – Binding assay

1. Unless the binding sample of interest is bacteria or cells, centrifuge samples briefly to avoid adding irrelevant particles to the array.
2. Remove blocking buffer from each well by gently touching the pipette tip to the corner of the well of the cassette and tip the slide so that the sample pools to that corner. Avoid touching the array surface.
3. Immediately apply the glycan binding protein sample of interest to each well. We recommend using 100 μL per well for 16 subarray cassettes and 200 μL for 8 subarray cassettes in order to ensure full and even coverage of the printed area throughout incubation. Avoid leaving air bubbles.
4. Seal the wells with adhesive film to prevent evaporation. If the sample is fluorescently labelled, cover with aluminum foil to keep it in the dark. Incubate on the shaker for 1-3 hours at 100 rpm. If the samples can easily aggregate, shake at higher speed to prevent protein aggregation. Longer incubation time may increase binding signal, especially for weakly binding samples.

Avoid allowing the slides to dry out at any point during the assay, especially during long incubation times. Make sure the adhesive film is sealed around each well.

If your binding samples are fluorescently labelled, go directly to Part 6 – Final wash and dry.

Part 3 – Wash

1. Remove binding samples from each well by gently touching the pipette tip to the corner of the well of the cassette and tip the slide so that the sample pools to that corner. Avoid touching the array surface.
2. Add wash buffer to each well. We recommend using 100 μL per well for 16 subarray cassettes and 200 μL for 8 subarray cassettes. Cover the wells with adhesive film and incubate on the shaker for 5 minutes at 85 rpm. Completely remove the wash buffer by pipette and repeat this step. Avoid allowing the slide to dry out and have your next wash or sample ready before you remove the wash buffer.

If your binding sample is biotinylated, go directly to Part 5 – Fluorescent staining.

Part 4 – Binding of biotinylated antibody (Sandwich Assay Format)

1. Unless the secondary biotinylated antibody sample is bacteria or cells, centrifuge samples briefly to avoid adding irrelevant particles to the array.
2. After completely removing the wash buffer immediately add of the secondary biotinylated antibody to each well. We recommend using 100 μL per well for 16 subarray cassettes and 200 μL for 8 subarray cassettes. Seal the wells with adhesive film and incubate on the shaker for 1 hour at 100 rpm. Shaking at faster speed may prevent protein aggregation. Longer incubation time is acceptable, but not necessary.
3. After incubation repeat Part 3 – Wash.

Part 5 – Fluorescent staining

1. Centrifuge fluorescent labeled streptavidin samples briefly to avoid adding irrelevant particles to the array.
2. After completely removing the wash buffer immediately add the fluorescently labelled streptavidin sample. 100 μL per well is recommended for 16 subarray cassettes and 200 μL for 8 subarray cassettes. Seal the wells with adhesive film and shield the wells from light with aluminum foil. Incubate on the shaker at 85 rpm for 1 hour. Longer incubation time is acceptable, but not necessary.

Part 6 – Final wash and dry

1. Remove the sample from each well by gently touching the pipette tip to the corner of the well of the cassette and tip the slide so that the sample pools to that corner. Avoid touching the array surface.
2. Briefly rinse each well with wash buffer. 100 μL per well is recommended for 16 subarray cassettes and 200 μL for 8 subarray cassettes.
3. Completely remove the wash buffer by pipette. Avoid touching the array surface. Repeat steps 2 and 3.

4. Disassemble the cassette from the slide. For the provided cassette this can be done by holding the slide with one hand at the top and bottom edges and sliding out the cassette clips one by one with the other hand. When the clips have been removed place the slide on the table and hold a small outer edge of the slide to the table as you gently peel the cassette off.
5. Immediately immerse the slide in a coplin jar or beaker full of wash buffer. Do not touch the surface of the array or allow the array surface to touch the sides of the beaker or jar.
6. Place the jar or beaker on the 60 rpm shaker for 10 minutes.
7. Decant the wash buffer from the jar or beaker while holding the slide in place (only touch the edge of the slide) and then add sterile de-ionized water to immerse the slide.
8. Place the jar or beaker on the 60 rpm shaker for 2 minutes.
9. Decant the water from the jar or beaker.
10. Allow the slide to dry completely in a clean, dust free environment before scanning.

Analysis

Scan the slide in a laser fluorescence scanner at the wavelength of emission for the fluorophore used. Adjust the laser power and/or PMT to obtain the highest possible signals without any being saturated. Analyze data with microarray analysis software. If there is specific binding the signal intensity should be significantly higher than the negative control signal. Our standard method of comparing signal intensities is to quantify the median signal intensity data and subtract the background intensity.

Interpretation of Control Signals:

Negative Control (Print Buffer): The negative control should produce little to no signal. Since there is no binding involved with the negative control, any other signals around the negative control's intensity are also not binding.

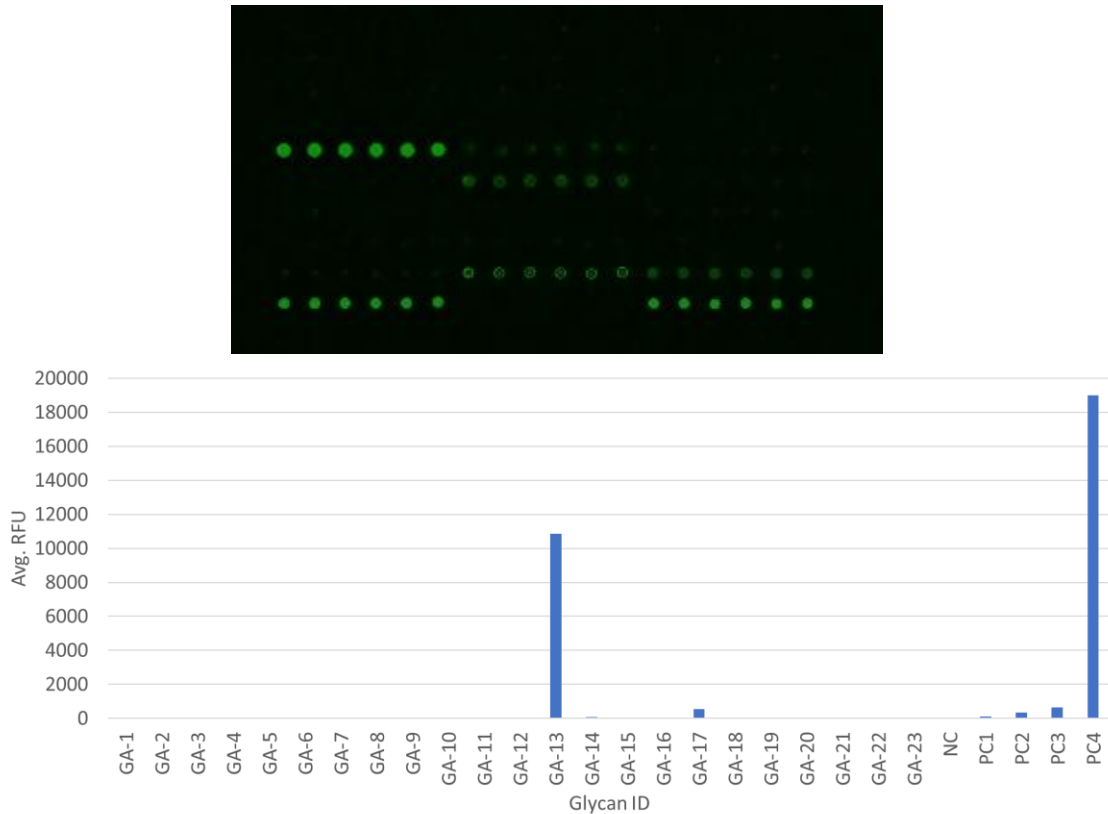
Marker: The array marker should show a fluorescence signal regardless of the assay. It is there primarily to aid with orientation of the array map during analysis.

Biotinylated Mannose (PC1): This positive control will bind directly to the fluorescent labelled streptavidin. If your glycan-binding protein sample is already fluorescently labelled, or in any case where the addition of fluorescent labelled streptavidin to the array was not preformed (Part 5 – Fluorescent staining) this positive control will not be reactive.

IgG (PC2, PC3, PC4): IgG is an antibody found in blood that is a primary component of humoral immunity. If the glycan-binding or secondary antibody sample is an anti-IgG antibody from human, mouse, or rabbit it should bind to the respective IgG control.

Typical Binding Assay Result from the GlycoAntibiotic Microarray

Example 1: GlycoAntibiotic Microarray on 8 subarray. A subarray assayed with an anti-vancomycin antibody, followed by streptavidin-Cy3 conjugated anti-IgG. Array was scanned with an InnoScan scanner at 1 PMT and low laser power at 532nm wavelength. Binders near the bottom are positive controls and the marker, and there is strongest binding to GA-13 (Vancomycin), followed weakly by antibiotics with similar structures.



Troubleshooting

Condition	Possible Causes	Potential Solutions
High Background	<ul style="list-style-type: none"> • Concentration of glycan-binding protein samples is too high • Concentration of fluorescent samples is too high. • Arrays are not thoroughly washed • Slide drying out during assay • Excessive particles in the samples due to sample aggregation, dust, etc. 	<ul style="list-style-type: none"> • Use a lower concentration range of samples. Consider a wider range if you are unsure where the detection limit is. • Apply longer times for washing steps and use a higher shaking rate • Make sure wash buffer and sample is completely removed before the next step • Make sure adhesive film fully seals the wells to avoid evaporation • Centrifuge the samples prior to assay to avoid adding irrelevant particles • If you think that the protein is aggregating during incubation, try shaking at a higher speed
Signal Variation	<ul style="list-style-type: none"> • Slide drying out during assay. • Binding samples are not equally distributed in the wells • Glycan-binding protein aggregation during incubation • Bubbles during incubation 	<ul style="list-style-type: none"> • Make sure wells are sealed to prevent evaporation during incubation. • Apply a larger volume of sample to each well to ensure equal distribution • Use a higher shaking rate during incubation • Make sure samples are homogeneous, mixed thoroughly, and do not leave bubbles on the array surface
Unexpected Binding	<ul style="list-style-type: none"> • Cross contamination between wells or other sources. • Sample contamination 	<ul style="list-style-type: none"> • Make sure to use sterilized pipette tips and tubes used for sample application and preparation • Ensure cassette is pressed firmly to the slide so that there are no gaps to allow leaking between wells • Be careful not to cross contaminate samples when applying to the wells, even during wash steps