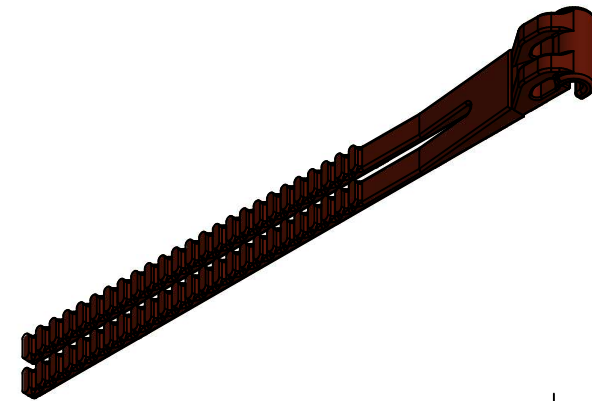
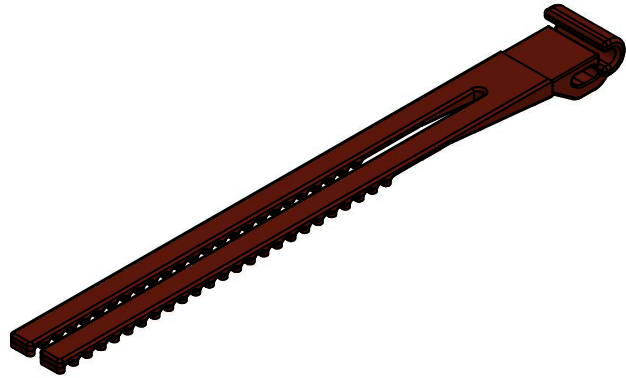
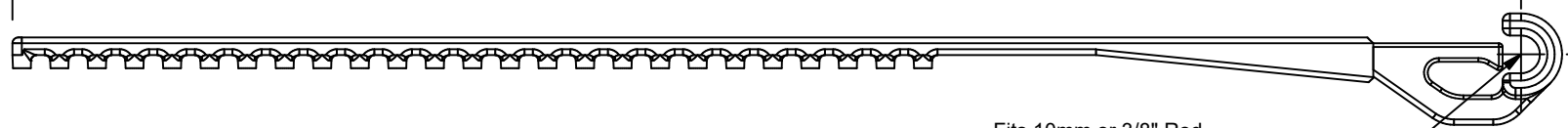


2

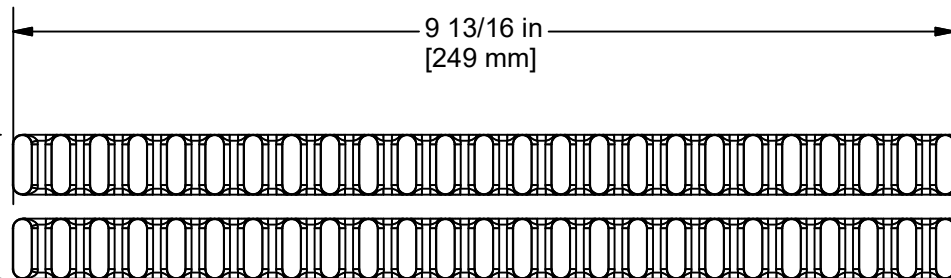
1



16 1/16 in  
[408 mm]

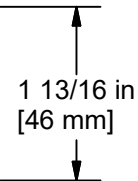


Fits 10mm or 3/8" Rod



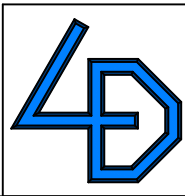
9 13/16 in  
[249 mm]

1 1/2 in  
[38 mm]



1 13/16 in  
[46 mm]

General Tolerances:  
 x.x - +/- 1/32  
 x.xx - +/- 0.010  
 x.xxx - +/- 0.005  
 x.xxxx - +/- 0.0005



**LORNIC DESIGN INCORPORATED**

12613 JAMES STREET, SUITE 10  
 HOLLAND, MICHIGAN 49424  
 PHONE: 616-594-0355 FAX 616-582-5908

THIS DRAWING INCLUDING ALL DESIGNS AND INFORMATION CONTAINED OR IMPLIED IS CONFIDENTIAL AND THE PROPERTY OF LORNIC DESIGN INCORPORATED. IT MAY NOT BE USED OR REPRODUCED IN ANY MANNER WITHOUT THE WRITTEN PERMISSION OF LORNIC DESIGN INCORPORATED AND IT MUST BE RETURNED UPON REQUEST (c) 2004

RELEASE DATE: 10/1/2019

RELEASED BY: INRH

Lornic Design  
 SWH-1000 "Latch On" Polisher Whip  
 "No Tools Required" Sales Drawing

FILE: SWH-1000 Sales.idw  
 SHEET: 1 of 1

1810-001 SWH-1000.iam

SIZE: A

2

1