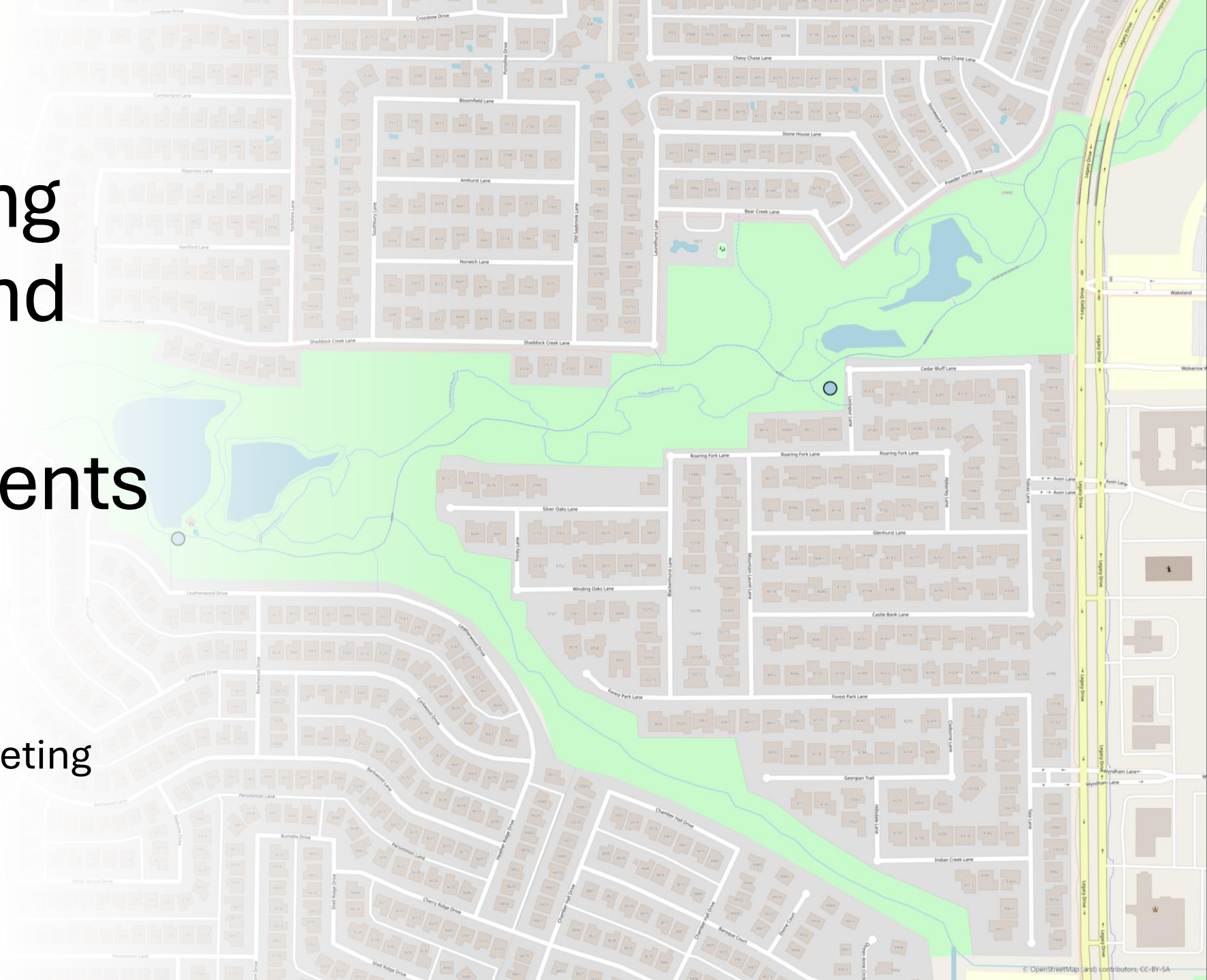


# Landscaping Irrigation and Surface Impoundments Permits

North Texas GCD  
Board of Director Meeting  
January 14, 2025



# Breakdown of Permit Uses

Use	Historic Use Permit	Production Permit	Total
Agriculture	8	14	22
Commercial/Industrial	19	11	30
Construction	2	6	8
Golf Course	24	0	24
Landscape Irrigation and Surface Impoundment(s)	126	66	192
Public Water System	109	32	141
<b>Total</b>	<b>288</b>	<b>129</b>	<b>417</b>

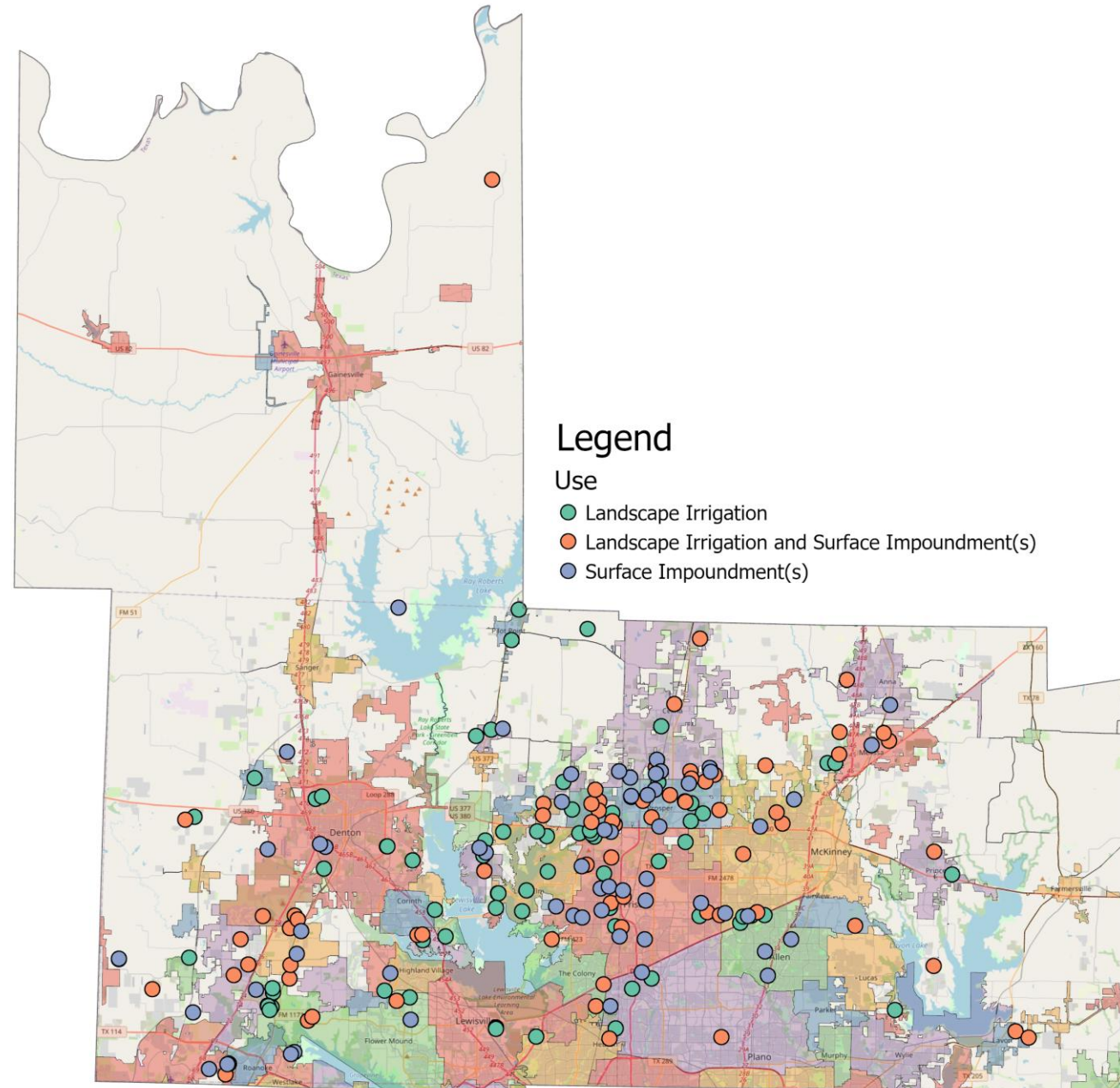
# Irrigation and Surface Impoundments Permits

<b>Use</b>	<b>Historic Use Permit</b>	<b>Production Permit</b>	<b>Total</b>
Landscape Irrigation	42	20	62
Landscape Irrigation and Surface Impoundment(s)	29	41	70
Surface Impoundment(s)	55	5	60
<b>Total</b>	<b>126</b>	<b>66</b>	<b>192</b>

---

# Location of Landscape and Surface Impoundments Permits

- 85% of Landscape and Surface Impoundments wells are located within a city boundary.
- 60% are located in Denton County.
- 0.5% are located in Cooke County.
- 39.5% are located in Collin County.

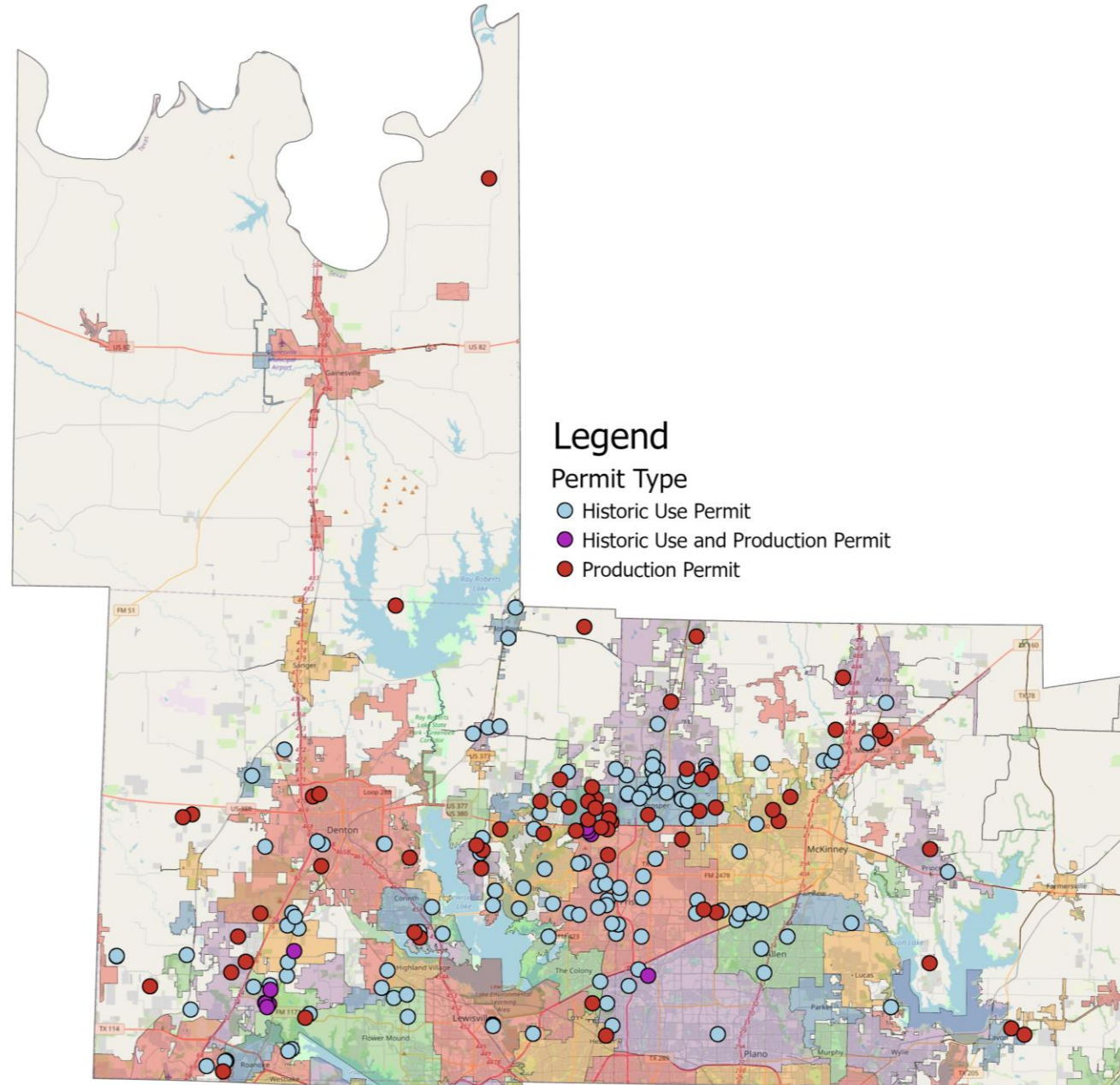


---

## Permit Type of Landscape and Surface Impoundments Permits

Landscape and Surface Impoundments Permits account for 46% of all permits, making them the largest category. Within this category:

- 32.3% are classified as Landscape Irrigation.
- 36.5% are classified as both Landscape Irrigation and Surface Impoundments.
- 31.2% are classified as Surface Impoundments only.

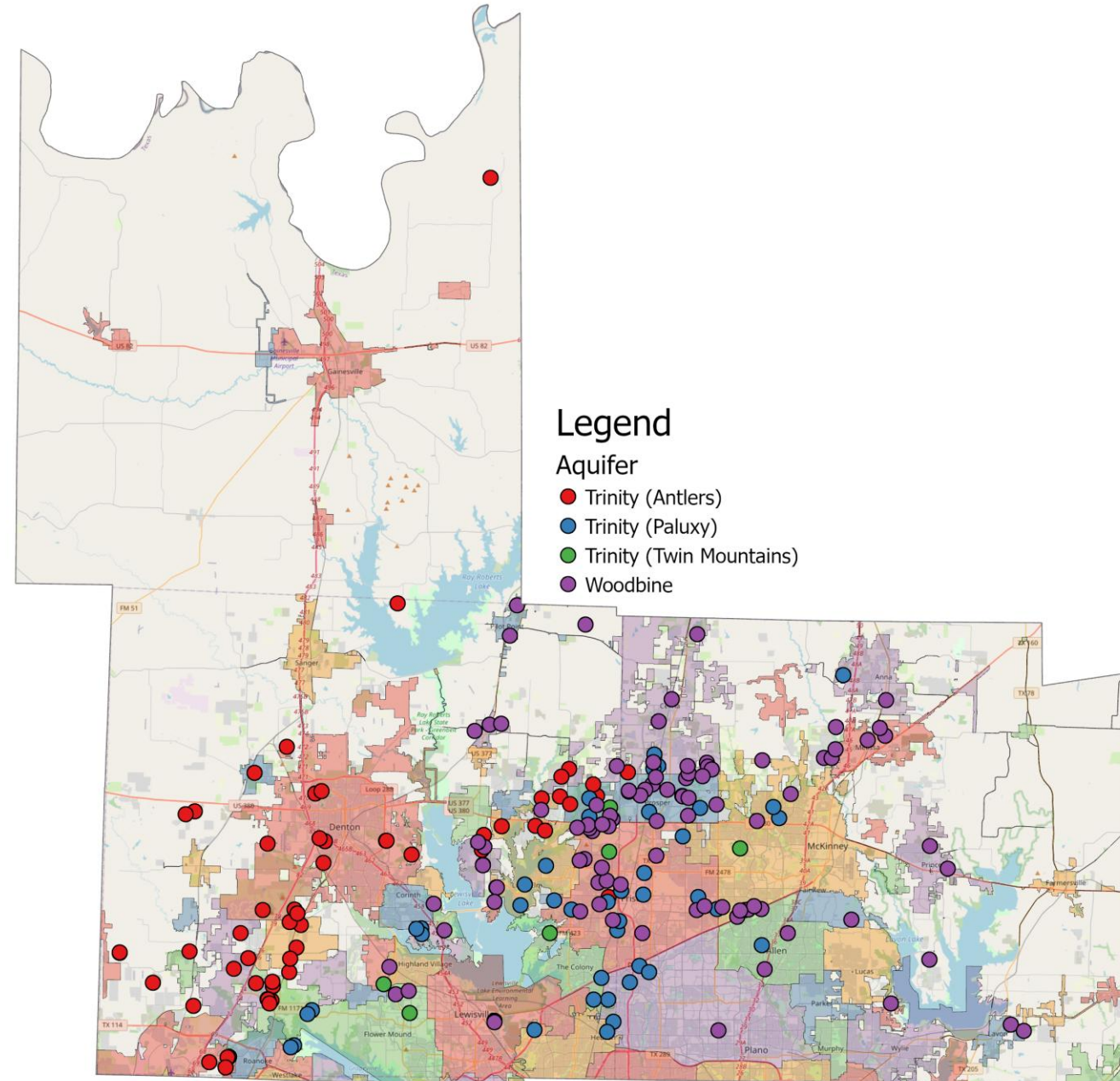


---

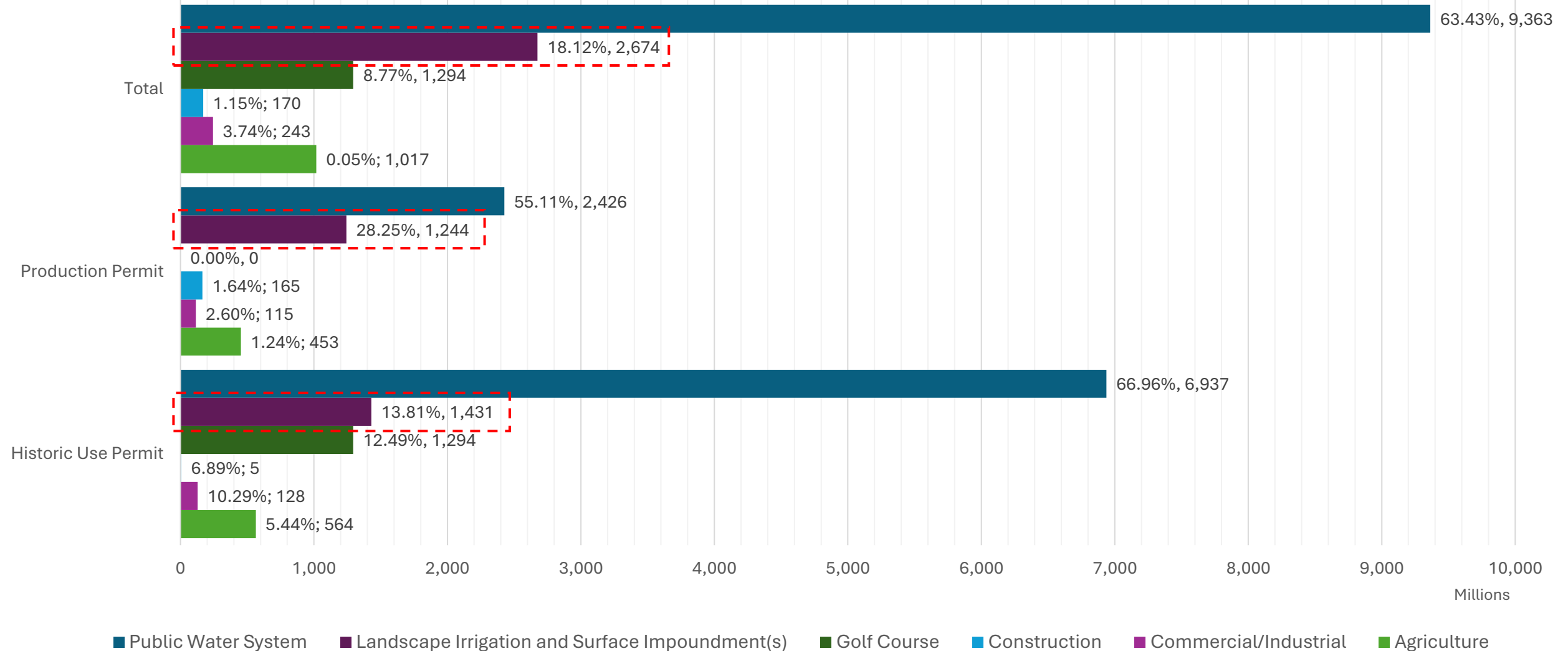
# Aquifers Used by Landscape and Surface Impoundments Permits

Landscape and Surface Impoundments Permits are completed in the following aquifers:

- 28.3% are classified as Trinity (Antlers) Aquifer
- 22.4% are classified as Trinity (Paluxy) Aquifer
- 2.9% are classified as Trinity (Twin Mountain) Aquifer
- 46.4% are classified as Woodbine Aquifer



# Permitted Usage and Volume



# Key Taking Point for Landscape Irrigation and Surface Impoundments

- **Prevalence of New Permits:** Landscape irrigation and surface impoundments represent the highest number of new permits, accounting for 51% of all new permits issued since the start of permitting.
- **Urban Concentration:** The vast majority (85%) of these wells are located within city boundaries.
- **Aquifer Dependence:** These wells are typically screened in the shallowest aquifers, which often serve as the sole water source for rural domestic and livestock users.
- **Permitted Volume:** This category holds the second-largest permitted volume. Notably, the share of water permitted has increased significantly with production permits compared to historic use.