

Alismail  
الاسماعيل

شركة حسين عبدالرحمن السماعيل للصناعة  
Hussain Abdulrahman Alismail Industrial Co.

**iRONMASTER™**

Catalog



Since 1972



## **SUMMARY**

Let us take the privilege of introducing ourselves. Alismail Industrial Company is one of the pioneers in manufacturing & fabricating of steel furniture in kingdom of Saudi Arabia.

In 1972, the company began operations in a modest Factory in Dammam. Forty years later, ALISMAIL has become a major manufacturing company due to the remarkable growth it experienced from the start.

Alismail Industrial Company is now considered as one of the biggest and more advanced company, and leader in producing top of the line and quality Furniture for offices, camps, restaurants, hospitals, schools and other accommodations where furniture is required.

We also strive to maintain a quality work environment, which has a direct impact on the retention and productivity of our skilled employees. ALISMAIL is a model of excellence whose entrepreneurial performance and vitality have been rewarded with numerous prestigious awards.

Our commitment to sustainable development is also recognized in our industry. For all these reasons, I take great pride in presenting Alismail Industrial Company to you, an industry leader and a contributor to the economic and social development of our communities — through its products, its success and its responsible vision.

CEO

Vertical file cabinets are essential equipment in any place where the storage and organized filing of letters, important documents, supplies and papers are needed. They are designed to enable you to keep a systematic and orderly setting of your valuable documents and confidential records.

خزائن الملفات الرأسية تعتبر من الاحتياجات الأساسية لأي مكان بحاجة للتخزين ولتنظيم الملفات، الوثائق المهمة والأوراق الشخصية كما أنها مصممة للحفاظ على المنهجية بالتنظيم المطلوب لتلك الوثائق القيمة والسجلات.

## VERTICAL FILING CABINETS



القياسات بالمليمتر DIMENSIONS in Millimeters	الأدراج DRAWERS	الألوان المتاحة + الكود AVAILABLE COLORS + CODE
W 453 D 640 H 703	2	<span style="display: inline-block; width: 15px; height: 15px; background-color: black; margin-right: 5px;"></span> 15171 <span style="display: inline-block; width: 15px; height: 15px; background-color: gray; margin-left: 20px; margin-right: 5px;"></span> 15002 <span style="display: inline-block; width: 15px; height: 15px; background-color: gold; margin-left: 20px; margin-right: 5px;"></span> 15001
W 453 D 640 H 1017	3	<span style="display: inline-block; width: 15px; height: 15px; background-color: black; margin-right: 5px;"></span> 15172 <span style="display: inline-block; width: 15px; height: 15px; background-color: gray; margin-left: 20px; margin-right: 5px;"></span> 15004 <span style="display: inline-block; width: 15px; height: 15px; background-color: gold; margin-left: 20px; margin-right: 5px;"></span> 15003
W 453 D 640 H 1331	4	<span style="display: inline-block; width: 15px; height: 15px; background-color: black; margin-right: 5px;"></span> 15173 <span style="display: inline-block; width: 15px; height: 15px; background-color: gray; margin-left: 20px; margin-right: 5px;"></span> 15006 <span style="display: inline-block; width: 15px; height: 15px; background-color: gold; margin-left: 20px; margin-right: 5px;"></span> 15005
W 453 D 640 H 1645	5	<span style="display: inline-block; width: 15px; height: 15px; background-color: black; margin-right: 5px;"></span> 15174 <span style="display: inline-block; width: 15px; height: 15px; background-color: gray; margin-left: 20px; margin-right: 5px;"></span> 15008 <span style="display: inline-block; width: 15px; height: 15px; background-color: gold; margin-left: 20px; margin-right: 5px;"></span> 15007

**LOCK :**

Heavy duty lock (with two keys) is furnished as standard equipment, over a thousand of non-interchangeable key combinations.

**BODY :**

Fully welded body for strength, rigidity and durability.

**FINISH :**

Powder coated finish.

**DRAWERS :**

Open full depth for total access to the contents.

**PAN STIFFENER :**

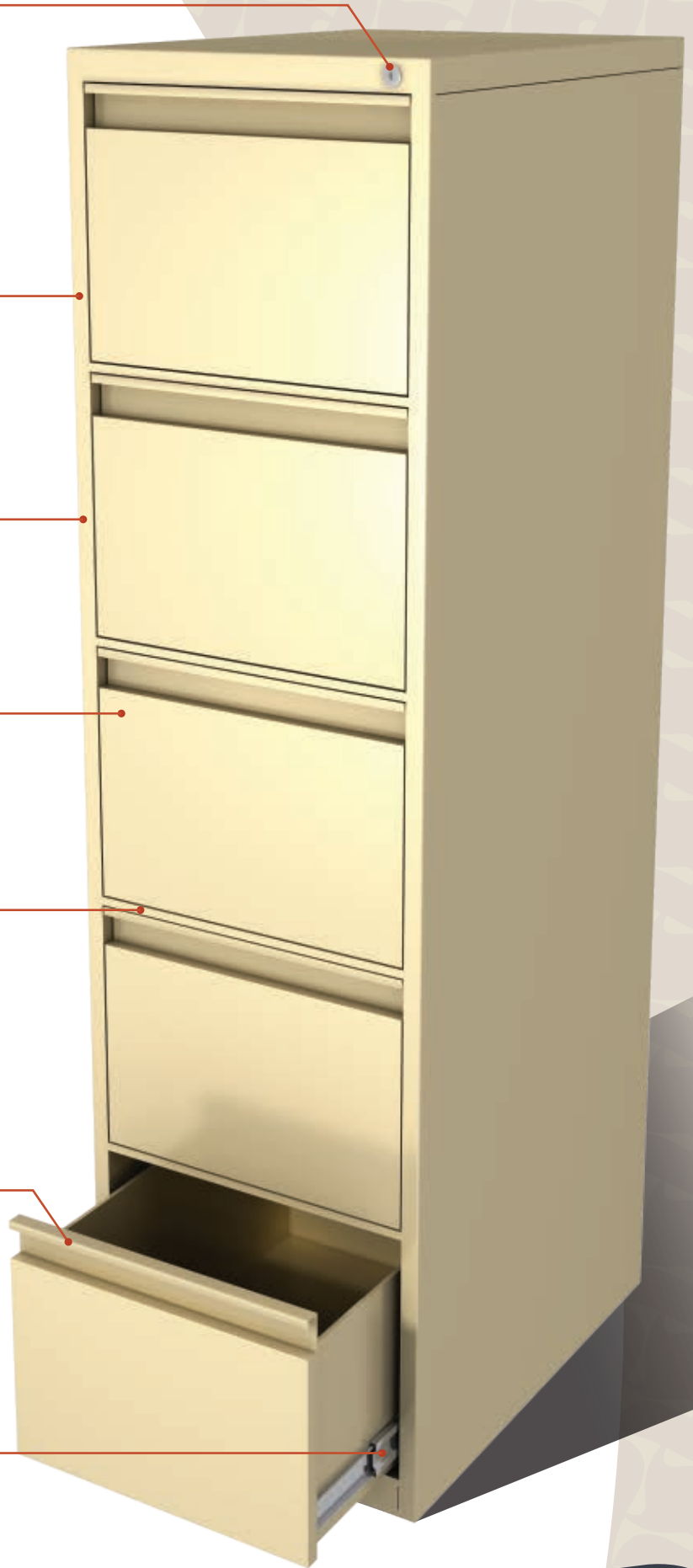
Welded to provide added strength and a rigid assembly.

**FLUSH-FRONT PULL :**

Is full width and integral with the drawers.

**BALL BEARING SLIDES :**

Full-extension slides with precision steel ball bearings per drawer, Capacity 45 kg/pair



Lateral files cabinets perfect for shared storage or as a hanging file organizer in the offices with providing the freedom of flexibility. And they are designed to enable you to keep a systematic and orderly setting of your valuable documents and confidential records.

## LATERAL FILING CABINETS

دواليب الملفات الجانبية مثالية للتخزين المشترك أو لتخزين الملفات المعلقة في المكاتب مع توفير كامل الحرية من المرونة. كما أنها مصممة للحفاظ على المنهجية والتنظيم المطلوب لتلك الوثائق القيمة والسجلات.



القياسات بالمليمتر DIMENSIONS in Millimeters	الأدراج DRAWERS	الألوان المتاحة + الكود AVAILABLE COLORS + CODE
W 900 D 470 H 700	2	15176 15424 15422
W 900 D 470 H 1010	3	15177 15423 15421
W 900 D 470 H 1300	4	15178 15420 15419
W 900 D 470 H 1640	5	15179 15417 15416

**LOCK :**

Heavy duty lock (with two keys) is furnished as standard equipment, over a thousand of non-interchangeable key combinations.

**BODY :**

Fully welded body for strength, rigidity and durability.

**FINISH :**

Powder coated finish.

**DRAWERS :**

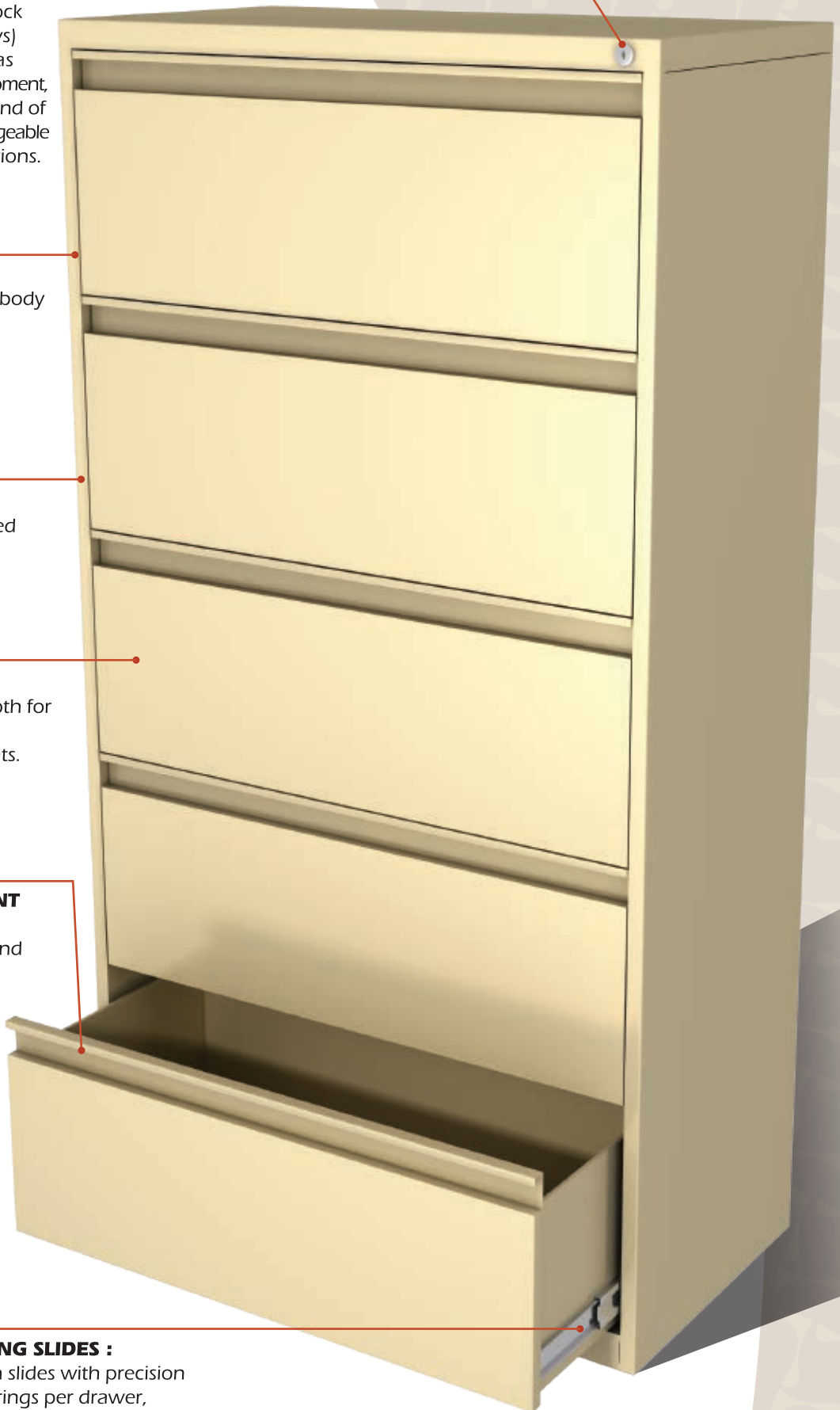
Open full depth for total access to the contents.

**FLUSH-FRONT PULL :**

Is full width and integral with the drawers.

**BALL BEARING SLIDES :**

Full-extension slides with precision steel ball bearings per drawer, Capacity 45 kg/pair



These cabinet ideal when there is not enough space for cabinet with swing-open or folding doors. Also it is Easy to clean, lightweight cabinets and has full-width shelves that can be adjusted on different height

هذه الكابائن مصممة بأبواب سحاب مع الزجاج للإستعمالات العديدة بما فيها الأماكن الضيقة حيث لا يمكن استعمال الأبواب العادية ومزودة بأرفف عريضة قابلة للتدريك وسهلة التنظيف

## SLIDING GLASS DOOR CABINETS



القياسات بالمليمتر DIMENSIONS in Millimeters	الأرفف SHELVES	الألوان المتاحة + الكود AVAILABLE COLORS + CODE
W 900 D 440 H 900	1	15182 15024 15023
W 900 D 440 H 1850	3	15180 15020 15019
W 1200 D 440 H 2000	4	15181 15012 15011



**BODY :**

Fully welded body for strength, rigidity and durability.

**FINISH :**

Powder coating finishing.

**DOOR :**

22-gauge steel, doors equipped with rollers at the bottom for easy running.

**ADJUSTABLE SHELVES :**

Fully Adjustable shelves at 35mm interval.

**HANDLE :**

Recessed aluminum handle on either doors for pulling left or right.

**GLASS :**

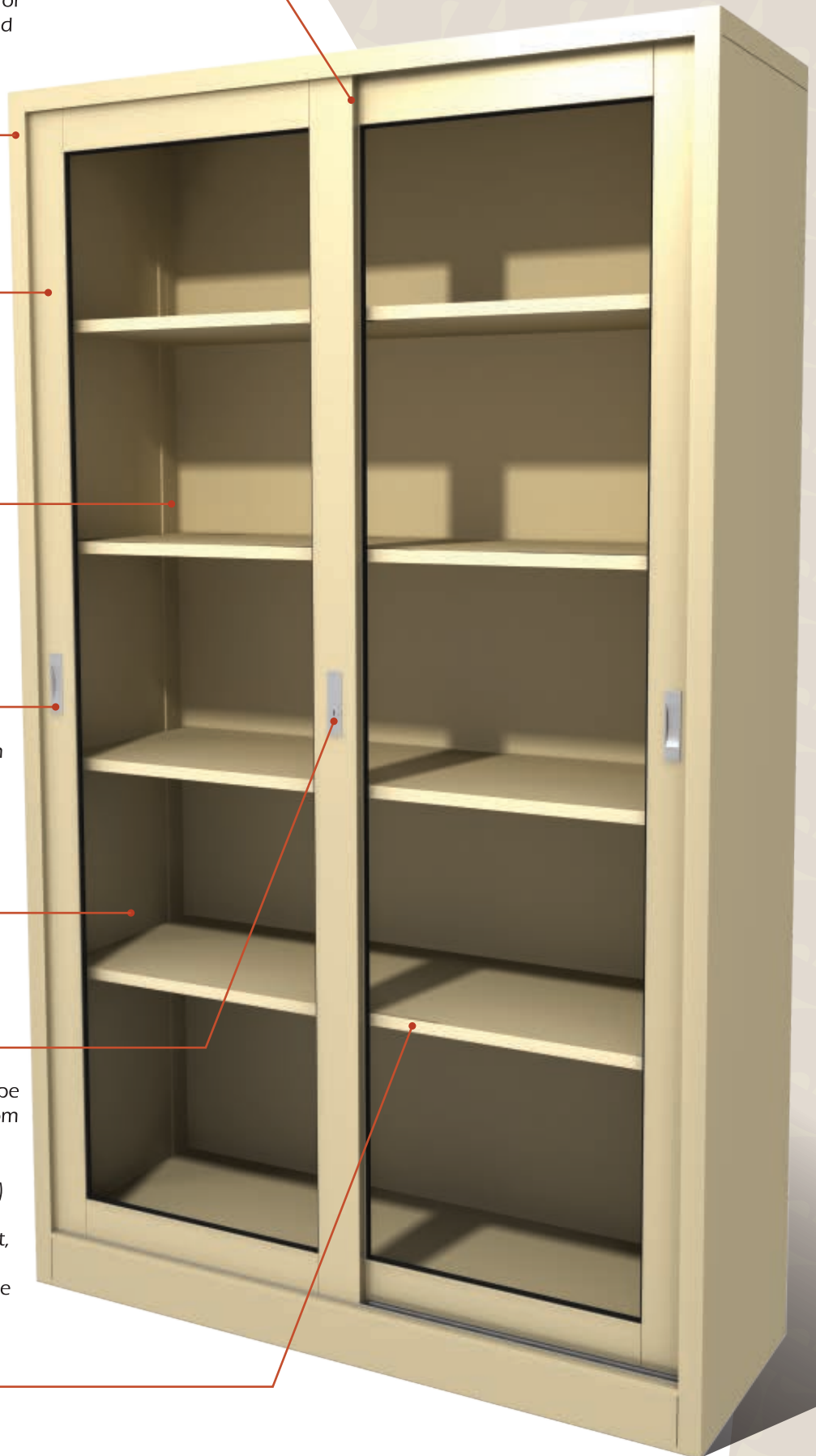
4mm clear Glass.

**LOCK :**

Heavy duty hook type lock which saves from accidental opening when key is on the lock, with (two keys) are furnished as standard equipment, over a thousand of non-interchangeable key combinations.

**SHELVES :**

22-gauge steel, flanged on 4 sides.



These cabinet ideal when there is not enough space for cabinet with swing-open or folding doors. Also it is Easy to clean, lightweight cabinets and has full-width shelves that can be adjusted on different height.

هذه الكابائن مصممة بأبواب سحب للاستعمالات العديدة بما فيها الأماكن الضيقة بحيث لا يمكن استعمال الأبواب العادية مزودة بأرفف عريضة قابلة للتدريك وسهلة التنظيف.

## SLIDING STEEL DOOR CABINETS



القياسات بالمليمتر DIMENSIONS in Millimeters	الأرشف SHELVES	الألوان المتاحة + الكود AVAILABLE COLORS + CODE
W 900 D 440 H 900	1	<span style="display: inline-block; width: 15px; height: 15px; background-color: black; margin-right: 5px;"></span> 15185 <span style="display: inline-block; width: 15px; height: 15px; background-color: gray; margin-left: 20px; margin-right: 5px;"></span> 15026 <span style="display: inline-block; width: 15px; height: 15px; background-color: #d4b88d; margin-left: 20px; margin-right: 5px;"></span> 15025
W 900 D 440 H 1850	3	<span style="display: inline-block; width: 15px; height: 15px; background-color: black; margin-right: 5px;"></span> 15183 <span style="display: inline-block; width: 15px; height: 15px; background-color: gray; margin-left: 20px; margin-right: 5px;"></span> 15022 <span style="display: inline-block; width: 15px; height: 15px; background-color: #d4b88d; margin-left: 20px; margin-right: 5px;"></span> 15021
W 1200 D 440 H 2000	4	<span style="display: inline-block; width: 15px; height: 15px; background-color: black; margin-right: 5px;"></span> 15184 <span style="display: inline-block; width: 15px; height: 15px; background-color: gray; margin-left: 20px; margin-right: 5px;"></span> 15014 <span style="display: inline-block; width: 15px; height: 15px; background-color: #d4b88d; margin-left: 20px; margin-right: 5px;"></span> 15013

**BODY :**

Fully welded body for strength, rigidity and durability.

**FINISH :**

Powder coating finishing.

**SHELVES :**

22-gauge steel, flanged on 4 sides.

**ADJUSTABLE SHELVES :**

Fully Adjustable shelves at 35mm interval.

**HANDLE :**

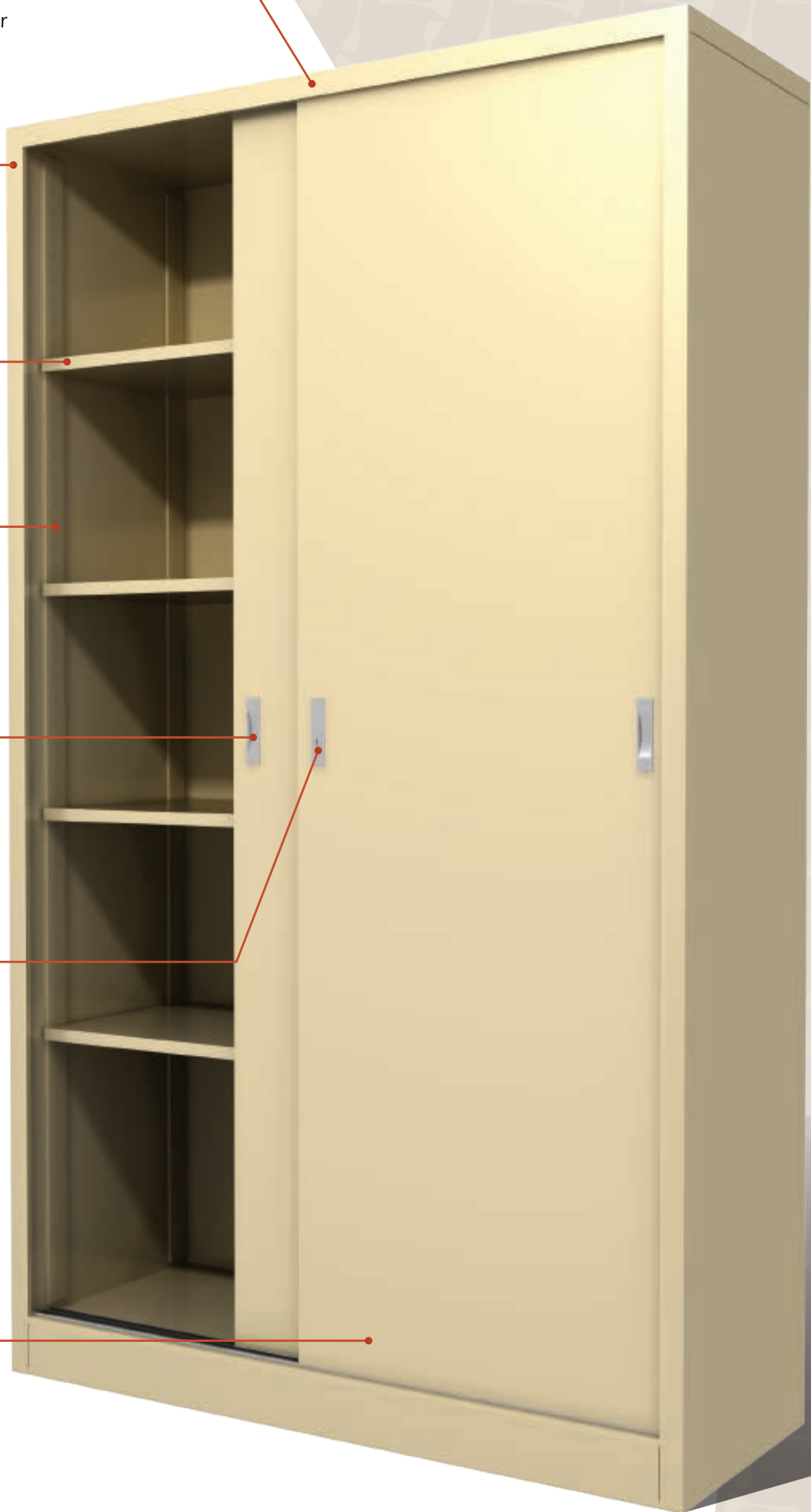
Recessed aluminum handle on either doors for pulling left or right.

**LOCK :**

Heavy duty hook type lock which saves from accidental opening when key is on the lock, with two keys are furnished as standard equipment, over a thousand of non-interchangeable key combinations.

**DOOR :**

22-gauge steel, doors equipped with rollers at the bottom for easy running.



Our Open Bookcase provide handy access to any files, reference books or binders while complementing any office decor while adjustable shelves make these bookcases adaptable to any office or storage need.

خزانة الكتب لدينا مصممة بشكل مفتوح لتوفير وصول سهل إلى ملف أو كتاب فيه حين أنها تكمل ديكور أي مكتب برفوف قابلة للتدريك جعلت هذه الخزائن قابلة للتكيف مع أي مكتب.

## OPEN BOOKCASES



القياسات بالمليمتر DIMENSIONS in Millimeters	الأرفف SHELVES	الألوان المتاحة + الكود AVAILABLE COLORS + CODE
W 900 D 440 H 900	1	15768 15460 15429
W 900 D 440 H 1850	3	15142 15205 15204
W 1200 D 440 H 2000	4	15187 15207 15206

**BODY :**

Fully welded body for strength, rigidity and durability.

**FINISH :**

Powder coating finishing.

**SHELVES :**

22-gauge steel, flanged on 4 sides.

**ADJUSTABLE SHELVES :**

Fully Adjustable shelves at 35mm interval.



Storage Cabinets are designed for give maximum space and security to all your business supplies and tools with modern styling to fit in any environment.

## STORAGE CABINETS

تم تصميم خزانات الملفات لتعطي المساحة القصوى والأمن المطلوب لجميع اللوازم والأدوات مع التصميم الحديث لتناسب فيه أية بيئة عمل.



القياسات بالمليمتر DIMENSIONS in Millimeters	الأرفف SHELVES	الألوان المتاحة + الكود AVAILABLE COLORS + CODE
W 900 D 440 H 900	1	■ 15186    ■ 15153    ■ 15148
W 900 D 440 H 1850	3	■ 15152    ■ 15030    ■ 15029

**BODY :**

Fully welded body for strength, rigidity and durability.

**FINISH :**

Powder coated finish.

**DOOR :**

One piece, 22-gauge steel, flanged on all four edges to provide strength and stiffness.

**LOCK :**

Heavy duty Handle lock (with two point locking system), locks when turned on clock wise at top and bottom, furnished as standard equipment, over a thousand of non-interchangeable key combinations.

**SHELVES :**

22-gauge steel, flanged on 4 sides.

**ADJUSTABLE****SHELVES :**

Fully Adjustable shelves at 35mm interval.

**PAN STIFFENER :**

Welded inside the door to provide added strength and a rigid assembly.



Steel Lockers are robust and strong, designed for heavy duty use and the standard of the locker industry. Available in a wide selection of compartment sizes to suit the varying needs of different organizations.

## STEEL LOCKERS

الخبائذ الفولاذية هية قوية ومثينة، مصممة للاستخدامات الثقيلة وحسب معايير صناعة الخبائذ الأساسية، متوفرة فيه تشكيلة واسعة من الأحجام مصممة لتناسب مع الاحتياجات المتنوعة لمختلف المنظمات.



القياسات بالمليمتر DIMENSIONS in Millimeters	الأبواب DOORS	الأرفف SHELVES	الألوان المتاحة + الكود AVAILABLE COLORS + CODE
W 400 D 440 H 1850	1	2	<span style="display: inline-block; width: 15px; height: 15px; background-color: black; margin-right: 5px;"></span> 15188 <span style="display: inline-block; width: 15px; height: 15px; background-color: gray; margin-left: 20px; margin-right: 5px;"></span> 15032 <span style="display: inline-block; width: 15px; height: 15px; background-color: #d4c08d; margin-left: 20px; margin-right: 5px;"></span> 15031
W 600 D 440 H 1850	1	2	<span style="display: inline-block; width: 15px; height: 15px; background-color: black; margin-right: 5px;"></span> 15189 <span style="display: inline-block; width: 15px; height: 15px; background-color: gray; margin-left: 20px; margin-right: 5px;"></span> 15034 <span style="display: inline-block; width: 15px; height: 15px; background-color: #d4c08d; margin-left: 20px; margin-right: 5px;"></span> 15033
W 900 D 440 H 1850	2	2	<span style="display: inline-block; width: 15px; height: 15px; background-color: black; margin-right: 5px;"></span> 15194 <span style="display: inline-block; width: 15px; height: 15px; background-color: gray; margin-left: 20px; margin-right: 5px;"></span> 15036 <span style="display: inline-block; width: 15px; height: 15px; background-color: #d4c08d; margin-left: 20px; margin-right: 5px;"></span> 15035





**BODY :**

Fully welded body for strength, rigidity and durability.

**FINISH :**

Powder coated finish.

**SHELVES :**

22-gauge steel, flanged on 4 sides.

**COAT ROD :**

Not less than 21mm diameter pipe.

**LOCK :**

Heavy duty cam lock (with two keys) is furnished as standard equipment, over a thousand of non-interchangeable key combinations.

**DOOR :**

One piece, 22-gauge steel, flanged on all four edges to provide strength and stiffness.

**PAN STIFFENER :**

Welded inside the door to provide added strength and a rigid assembly.

Steel Lockers are robust and strong, designed for heavy duty use and the standard of the locker industry. Available in a wide selection of compartment sizes to suit the varying needs of different organizations.

الخبائن الفولاذية هبة قوية ومبينة، مصممة للاستخدامات الثقبلة وحسب معاير صناعة الخبائن الأساسية، متوفرة فيه تشكيلة واسعة من الأحجام مصممة لتناسب مع الاحتياجات المتنوعة لمختلف المنظمات.

## MULTI STEEL LOCKERS



القياسات بالمليمتر DIMENSIONS in Millimeters	الأبواب DOORS	تعليقة ملابس COAT ROD	الألوان المتاحة + الكود AVAILABLE COLORS + CODE
W 400 D 440 H 1850	2	✓	15190 15040 15039
W 400 D 440 H 1850	3	—	15192 15201 15200
W 400 D 440 H 1850	4	—	15193 15203 15202
W 900 D 440 H 1850	9	—	15195 15038 15037

**BODY :**

Fully welded body for strength, rigidity and durability.

**SHELVES :**

22-gauge steel, flanged on 4 sides.

**FINISH :**

Powder coated finish.

**DOOR :**

One piece, 22-gauge steel, flanged on all four edges to provide strength and stiffness.

**LOCK :**

Heavy duty cam lock (with two keys) is furnished as standard equipment, over a thousand of non-interchangeable key combinations.



Steel Office Desks have a basic design that complements a variety of office settings. These steel desks are ideal for home offices, schools, hospitals and more. Also we offer the biggest range of Utility Tables, that are commonly used for multi-computer hot desks, fax and copiers and for training rooms.

المكاتب المعدنية لديها التصميم الأساسي لتكملة مجموعة أمة بيئة مكتبية و هذه المكاتب مثالية للمكاتب المنزلية والمدارس والمستشفيات وأكثر من ذلك ، بالإضافة إلى توفر أكبر تشكيلة من طاولات العمل التي لها استخدامات متعددة كأن تستخدم طاولة كمبيوتر أو لفاكس وآلات النسخ و قاعات التدريب

## STEEL OFFICE DESKS & UTILITY TABLE



القياسات بالمليمتر DIMENSIONS in Millimeters			الأدراج DRAWERS	الألوان المتاحة + الكود AVAILABLE COLORS + CODE		
W 750	L 1200	H 760	✓	■ 15196	■ 15044	■ 15043
W 750	L 1600	H 760	✓	■ 15197	■ 15277	■ 15276
W 750	L 1800	H 760	✓	■ 15198	■ 15147	■ 15146
W 750	L 1600	H 760			■ 15223	■ 15222

**FINISH :**

Powder coated finish over phosphatized surface.

**TOP :**

18mm thick tow face melamine decorative wood.



**FLUSH-FRONT PULL :**

Is full width and integral with the drawers.

**LOCK :**

Heavy duty lock (with two keys) is furnished as standard equipment, over a thousand of non-interchangeable key combinations.

**DRAWERS :**

Open full depth for total access to the contents.

**BALL BEARING SLIDES :**

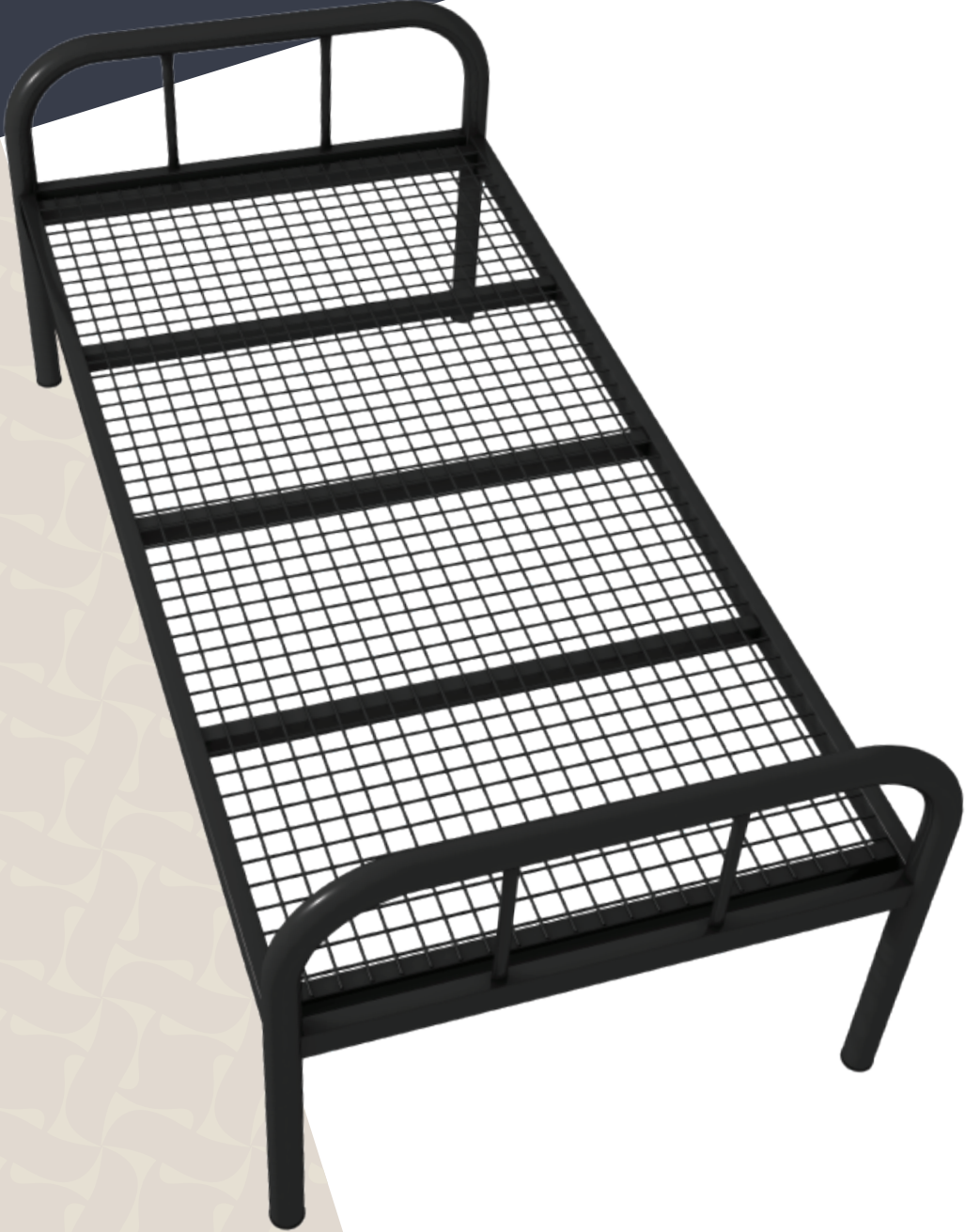
Full- extension slides with precision steel ball bearing per drawer.









This bed is made of tube steel with high quality, and insulated against rust, And it is available horizontally with double bed and a ladder and a solid arm for comfort user of the upper bed.

هذا السرير مصنوع من الحديد المتيين بجودة عالية، ومعزول ضد الصدأ، ويتوفر منه السرير المزدوج أفقياً مع وجود سلم وذراع متيين لراحة المستخدم للسرير العلوي.

## SINGLE & DOUBLE BUNK BED'S



القياسات بالمليمتر DIMENSIONS in Millimeters	النوع TYPE	الألوان المتاحة + الكود AVAILABLE COLORS + CODE
W 2000 D 950 H 1000	Single	 25119  15857  15269
W 2000 D 950 H 1600	Double	 25116  15858  15163

**ROUND HANDLE**

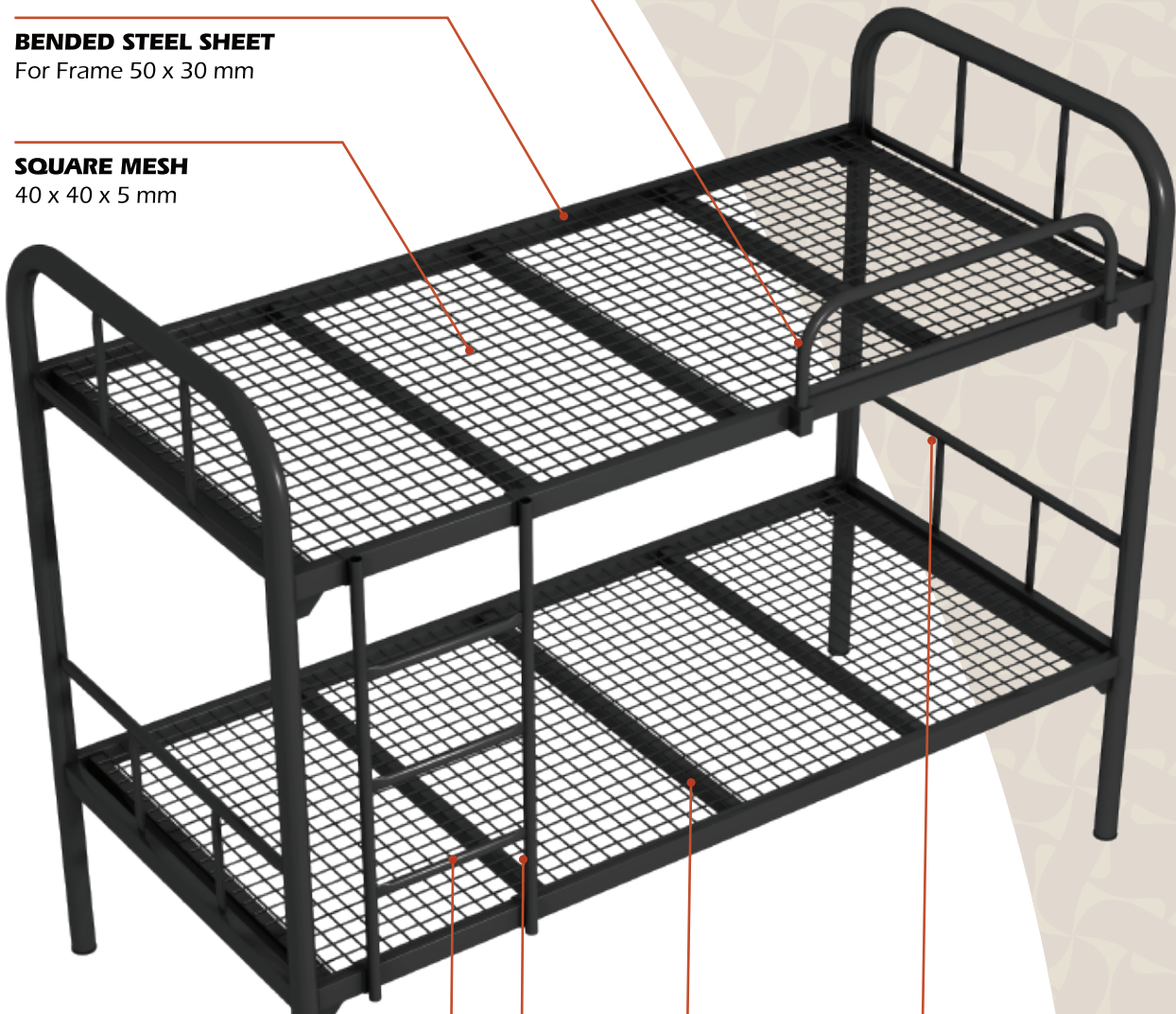
For Support

**BENDED STEEL SHEET**

For Frame 50 x 30 mm

**SQUARE MESH**

40 x 40 x 5 mm



**HOLLOW TUBE  
LEGS & BRACES**

50 mm

**PLASTIC CAP**

**LADDER**

Round Pipe 25 mm

Steel Pipe 25 x 25 mm

**STEEL PIPE**

For weight support 25 x 25 mm

**SUPPORTS**

Tube pipe 25 mm

We have provided many additional accessories to allow you to amend to the product in line with your needs.

قمنا بتوفير العديد من الإكسسوارات الإضافية ليتمكن لكم التعديل على المنتج بما يتوافق مع احتياجاتكم.

## ACCESSORIES & PRODUCTS DETAILS



### Lock

One-point locking device, Heavy duty cam locks with two keys are furnished as standard equipment, Lock mechanisms have over a thousand of non-interchangeable key combinations each lock have a unique key system,



### Lock

Heavy duty handle lock with two point locking system, locks when turned on clock wise at top and bottom, furnished as standard equipment, over a thousand of non-interchangeable key combinations.



### Padlock System

The Heavy duty solid parts are custom designed for security.



### Three Point Latching

Doors have latch clip engaging the door frame at three points, Locking device to be positive, automatic type, whereby locker door may be locked when open.



### Handle Lock

Heavy duty handle lock with two point locking system.



### Number Plates

Polished Aluminum, Clearly black etched figures, Attached near top of door with rivets.



### Card Holder

Aluminum card holder for all lockers shall be attached near top of door and attached with rivets.



### Coat Hook single

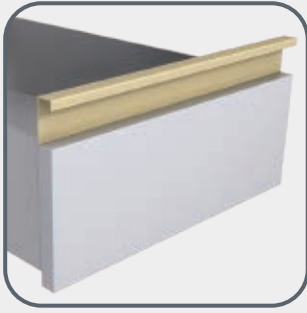
Each opening can have three single prong hooks, All hooks to be zinc-plated, Attached with rivets.



### Coat Hook double

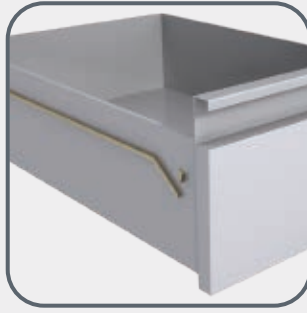
Each opening can have one double prong hook, All hooks to be zinc-plated, Attached with rivets.





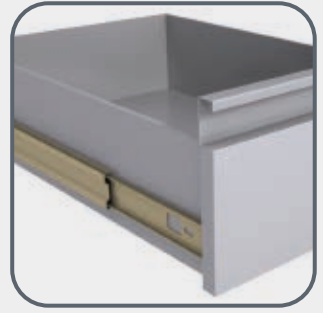
### Flush-Front Pull

Full width pulls neutral drawer front design not only fit in any interior environments but also allow drawers to be conveniently opened from any positions.



### Safety Interlock

This safety mechanism provides complete security against accidental opening of two or more drawers simultaneously.



### Ball Bearing Slides

Full-extension slides with precision steel ball bearings per drawers, Capacity 45 kg/pair



### Extra Shelves

Single sheet, 22-gauge steel, Flanged on 4 sides, Safety flange: Double flanged with second bend turned 45 degrees.



### Coat Rods

Not less than 21mm diameter, Attached with bracket welded at each end.



### Free Standing

All Lockers type can furnished with 10cm height legs.



### Ventilation

Louvers to be provided at top, bottom or both of doors in groups of three louvers at center of door.



### Slope Tops

22-gauge steel, 25-degree slope, Installed over standard flat top. For use individual locker or may be installed side by side.



### Continuous Slope Tops

Furnished in any lengths and available in either single row or double row construction for custom appearance for continuous run.

## PRODUCTS DETAILS

- **Construction:** All welded. Pre-assembled with seams and joints welded.
- **References:** (JIS G3141 – DIN 1623.1) – Standard specification for cold rolled carbon steel sheet and strip, High-Strength Low-Alloy with improves Formability.
- **Material:** All parts are fabricated using prime, high-grade class I mild annealed, cold rolled steel sheet, free from buckle, loose imperfections.
- **Standard Finish:** Steel parts shall be thoroughly machine cleaned and chemically treated to protect against rust and corrosion to insure proper bonding of powder coating finish. Shall be given a heavy coat of high quality powder system to give more uniform coverage. Shall be baked at 200 degree to assure a harder finish for longer usage. Interior parts are painted same color as outside.



RAL  
9005



RAL  
7035



RAL  
1015

## Follow us



@AlismailCom



@AlismailCom



@AlismailCom



www.facebook.com/AlismailCom



alismail@alismail.com

## Location

Dammam First Industrial

المدينة الصناعية الأولى بالدمام



## Other Trademarks

ironClad™

D-iron™

شركة حسين عبدالرحمن السماعيل للصناعة

ص.ب. 919 الدمام 31421 المملكة العربية السعودية هاتف : 920007575 فاكس : +966 13 847 1729

P.O.BOX 919 DAMMAM 31421 SAUDI ARABIA TEL. 920007575 FAX: +966 13 8471729

ALISMAIL@ALISMAIL.COM



