

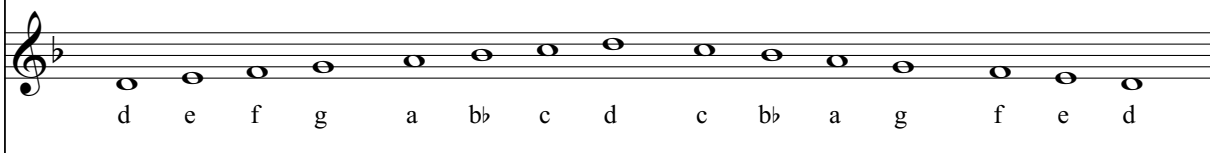
d minor

relative major: F +

key signature: b \flat

d minor natural

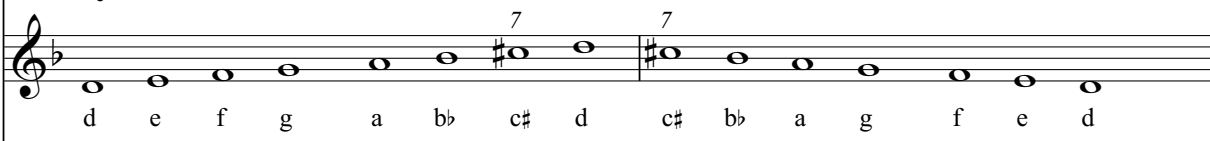
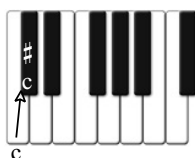
The natural minor simply borrows the key signature of it's relative, F major.



d minor harmonic

The 7th note is raised a half step ascending and descending the scale.

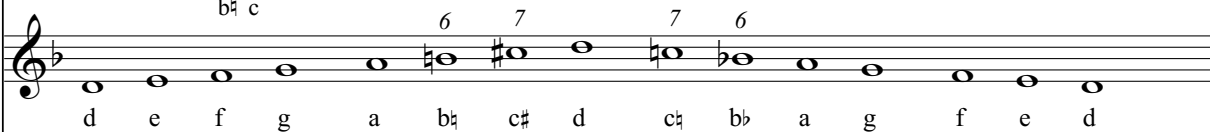
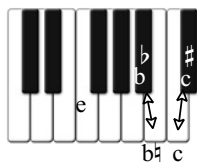
The 7th note is c and is raised to c \sharp creating the *leading note*.



d minor melodic

The 6th and 7th notes are raised a half step ascending the scale and lowered a half step descending the scale.

Ascending the scale the 6th note is b \flat (see the key signature) and is raised to b \sharp .



The following excerpt in *d minor* is the march tune from G. BIZET's *Carmen*, Act I.

Note the c \sharp leading note and and b \sharp accidental from the *melodic* minor in the score.

G. BIZET

Carmen, Act I

march tune

