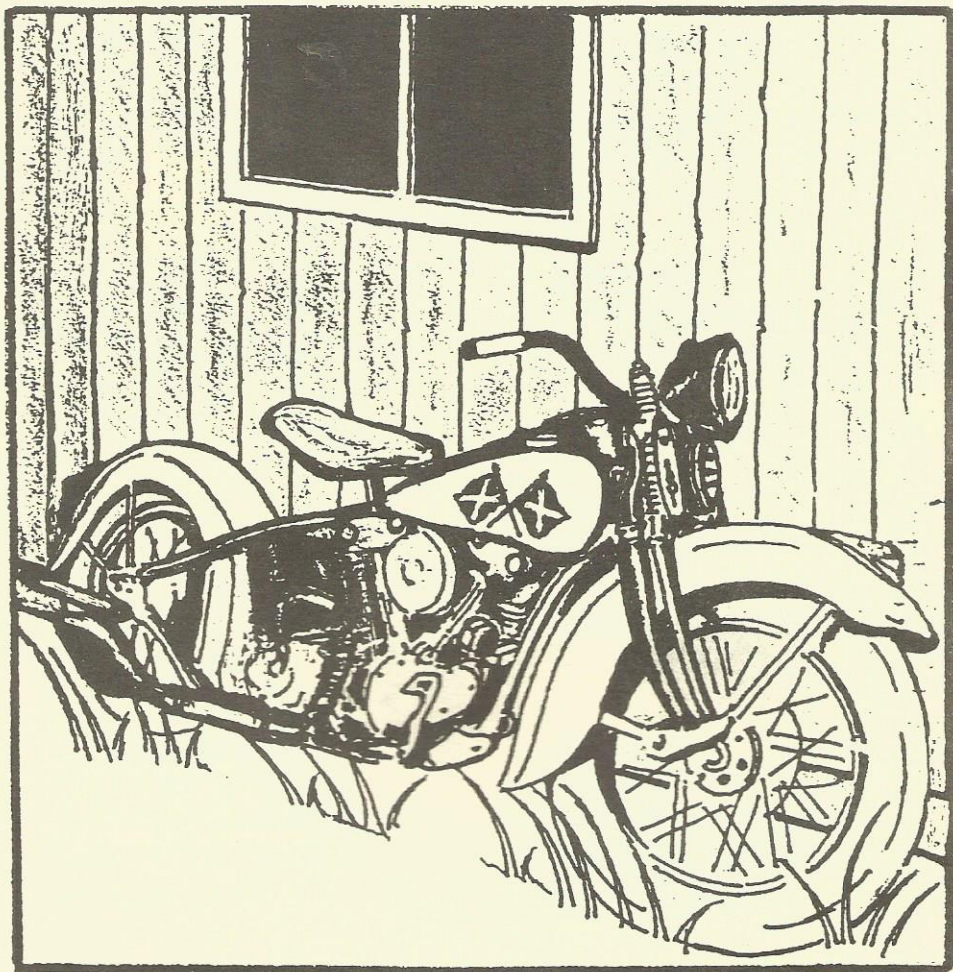


THE RUSTY REBEL

AUG

2000



A PUBLICATION OF THE CONFEDERATE CHAPTER OF
THE ANTIQUE MOTORCYCLE CLUB OF AMERICA

RUSTY



REBEL

Rusty Rebel Newsletter

August 2000

CONFEDERATE CHAPTER 2000 OFFICERS

President

Calvin Burnett
7607 Memphis-Arlin
Memphis, TN 38135
901-372-7999

VicePresident

Gilbert Cagle
6430 Southbridge Circle
Horn Lake, MS 38637
601-393-6205

Treasurer

Robert Scott
10272 So. White Station
Memphis, TN 38120
901-767-8757

Secretary

Tina Schmalshof
620 South Bellevue
Memphis, TN 38104
901-725-0066

Director

John Ragan
2820 Ivy Road
Eads, TN 38028
901-213-4967

Director

Clark Bennett
152 Pleasant Plains
Jackson, TN 38305
901-664-2983

Deputy Judge

Fleming Horne
7645 Memphis-Arlington
Bartlett, TN 38134
901-386-5894

Editor

Lew Elliott
620 South Bellevue
Memphis, TN 38104
901-216-0231

**Confederate Chapter AMCA
620 South Bellevue
Memphis, TN 38104**

THE COLONEL SPEAKS

First I would like to thank the members that have hosted the chapter meetings at their houses. It's a wonderful departure from our normal meeting place. It's also a wonderful way for our chapter to get closer. Who knows....maybe someday the Colonel will actually finish his garage to the point that he wouldn't be embarrassed to host one....oh well.....Charlie definitely has the priority right now.

Of course the big news is still the Roadrunner. For the new folks in the chapter that aren't up to speed on this I'll give you a quick download. The Confederate Chapter has hosted several AMCA National Roadruns over the past 12 years. All have been very successful. The general theme is that the riders arrive on Sunday, check in and receive a packet of information about the Roadrun. We kick the Roadrun off with a Rider's Orientation on Sunday evening.(in this case June 10,2001) During the Orientation, we layout the three day ride and review logistics, points of interest, etc.. We wrap up the Roadrun with a banquet on Wednesday evening. We give out awards and have a big time "roasting" some of the participants. You must make plans attend. It's a wonderful time.

All those Roadrun details we had lots of time to do are suddenly rushing up on us. I'd like to thank Johnny

THE COLONEL SPEAKS (cont)

Whitsett for all the hours he's spent on the phone trying to get this thing off the ground. The Hornes, the Cagles, the Whitsetts and the Burnett's recently made a trip to Mountain Home, AR to do the initial layout of the Roadrun. We have a great asset in Mountain Home. Longtime AMCA member, Bob Davis, lives there. He knows every piece of road in that part of the country. He gave us some wonderful ideas on routes and stops.

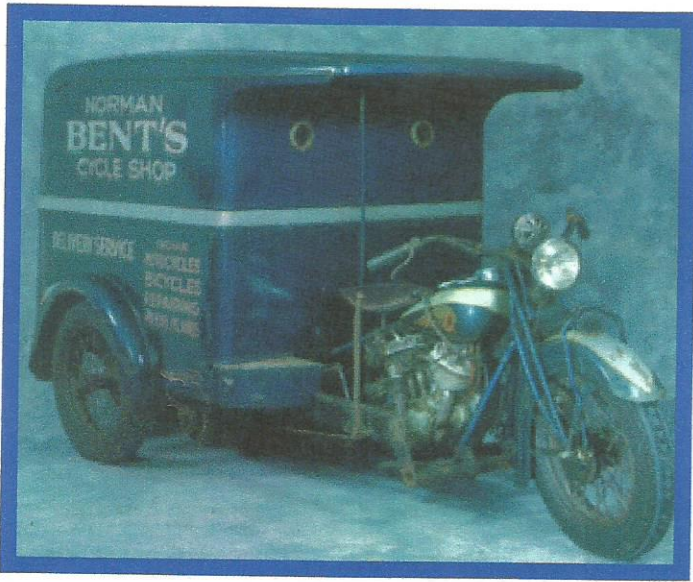
We've got a super place to host the Roadrun. Some of you may be familiar with Gaston's resort. It's a beautiful location with lots of cottages and the White River just out your back door. They've recently added a large banquet facility that will be perfect for our Rider's Orientation and final banquet. There are several camping locations within just a few miles of the location.

If you love curvy mountain roads, no traffic and lots of beautiful scenery, you will enjoy this run.

Regards, The Colonel

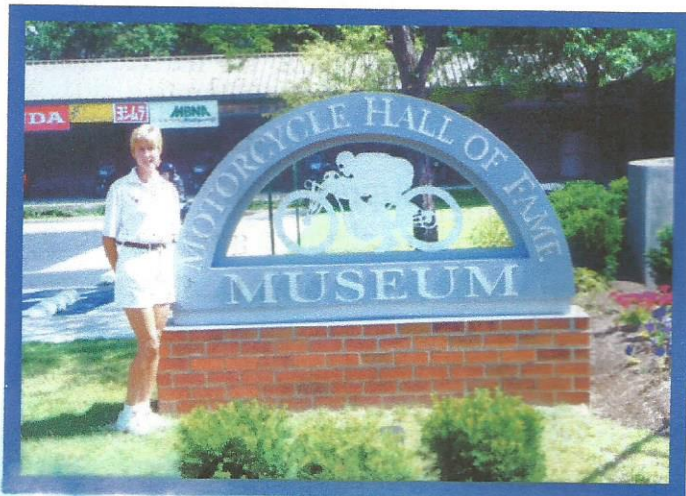
Calvin Burnett

President Confederate Chapter AMCA



1939 Indian Traffic Car

There were only a handful produced. The body was built for Indian by the Waterhouse Company of Webster MA. It has heavy oak flooring, 20 gauge steel outer shell over oak frame work, Tek wood roof with a canvas outer layer and mounting by six 7/16 inch bolts.



Here is an article from
**The Motorcycle Hall of Fame Museum
1999 Annual Report.**

One of the most important developments during 1999 has been the execution of a long-term "Key Donor" relationship with the Antique Motorcycle Club of America. Certainly, the AMCA is not a new friend to the Foundation. It has provided talent, motorcycles for exhibit, expertise, valuable contacts, and consistent funding for more than a decade. However, the larger facility provides new exhibit opportunities for the true antique and vintage motorcycles. As a Key Donor the AMCA has contributed \$150,000 to the Foundation and will provide ongoing expert consultation and support in the development of the R.B. McClean Gallery. Named after the current AMCA President and long-time AMHF Trustee, Bob McClean, the gallery will showcase the finest and most accurately restored vintage motorcycles in the world. Some of the motorcycles scheduled for an appearance in the R.B. McClean gallery.

ROAD RUN 2001
BASIC INFORMATION

JUNE 10,11,12,13 2001

LOCATION:
GASTON'S WHITE RIVER
RESORT

1777 RIVER ROAD
LAKEVIEW, AR 72642
(870) 431-5202

CLOSEST RV PARK:
BULL SHOALS
STATE PARK
LAKEVIEW, AR
(870) 431-5521

2000 RATE SCHEDULE

BEDROOM ACCOMMODATIONS (No Kitchen) \$ 76.00 to \$ 87.00

PRIVATE HOUSEKEEPING COTTAGES WITH KITCHEN

STANDARD \$ 93.00

Two double beds...

STANDARD-DELUXE \$ 99.00

One private bedroom, three double beds, shower, living room, fireplace...

DELUXE \$110.00

Two private bedrooms, one double bed, two single beds, one bath, living room, fireplace...

DELUXE \$120.00

Two private bedrooms, two double beds, two single beds, one bath, living room, fireplace...

ULTRA-DELUXE \$145.00 to \$162.00

Two private bedrooms, two double beds in each room, two baths, living room, fireplace...

THE HOUSE \$267.00

Four large bedrooms, two baths, large living room, fireplace, and redwood patio (rate based on 4 guests)...

THE MOUNTAIN OAK \$386.00

Four large bedrooms, four baths, fireplace, living room, large redwood deck, Private Setting (rate based on 4 guests)...

LODGE I \$424.00

Four large private bedrooms, each with private bath and two double beds, meeting room/living room (rate based on 8 guests)...

LODGE II \$500.00

Four large private bedrooms, each with private bath and two double beds, meeting room/living room, large fireplace (rate based on 8 guests)...

THE COTTAGE \$535.00

Four large private bedrooms, each with private bath and two double beds, meeting room/living room, large fireplace, large patio, charcoal pit (rate based on 8 guests)...

RIVER VILLA \$895.00

Ten large private bedrooms, each with private bath and two double beds, meeting room/living room, fireplace, large patio, charcoal pit, redwood deck (rate based on 20 guests)...



CONFERENCE LODGE AVAILABLE



OUR TRIP TO WAUSEON, OHIO

By Tina Schmalshof

Ron , myself and Misty hitched a ride to Wauseon with Doris and Gilbert Cagle in their Holiday Rambler. We left a little early so we visit the Motorcycle Hall of Fame museum. And I'm sure glad we did.

The musuem is located just a few blocks from Interstate 70. As we pull up to the 23 acres we are in awe of the grounds. The grass was perfectly manicured on the rolling hills that had a meandering brook going through. There are wooded areas and exquisit landscaping.

A very nice feature, among many, is that they have covered parking for your motorcyle and lockers for belongings.

The AMCA has a very large display area as soon as you walk in the door. Many members put their motorcycles on display. Bruce Lindsey had several of his in the museum.

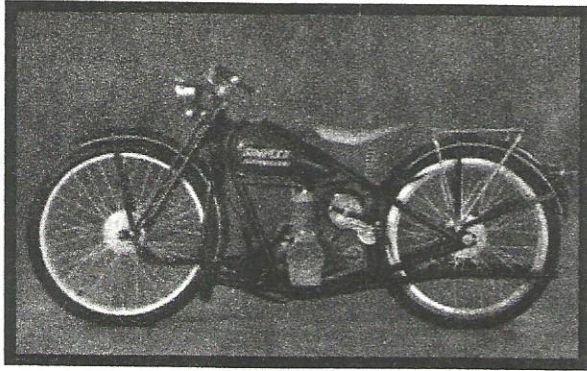
OUR TRIP TO WAUSEON, OHIO

By Tina Schmalshof

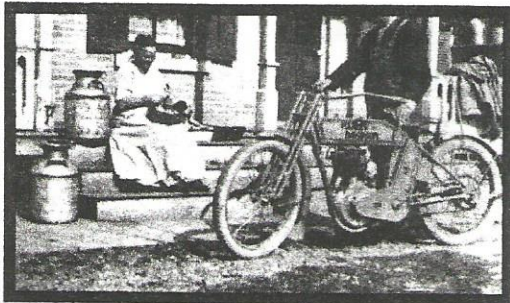
(cont)

Here is a list of the different motorcyces in the museum. Henderson, Cleveland, 1913 Sears, 1914 Flying Merckel, 1915 Williams, Harley Davidson, Indian, 1915 Militaire, 1912 New Era, 1909 Royal Pioneer, Yamaha, Excelsior, 1912 Shaw, Triumph, BMW, Kawasaki, 1933 Velocette, 1987 Aprilia, Susuki, 1962 Matchless, 1973 Yankee, 1967 Husqvarna, 1985 Godden/weslake, 1966 CZ, 1934 Crocker, BSA, Penton, 1949 Norton, 1963 Dot Enduro (Devoid of Trouble) and an 1885 Daimler "Einspur" from Germany shown below.

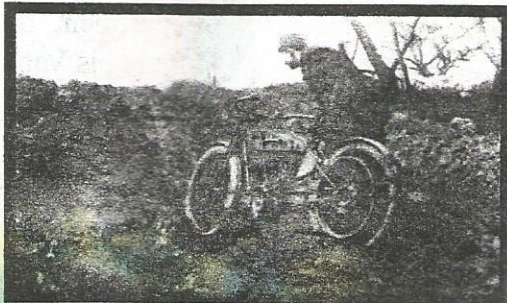




1957 Simplex Servi-Cycle



Gone to the Grocery....



And we complain about our roads.....

CHAPTER HAPPINGS

Ron and Glibert met up with Bruce Lindsey in Wauson and picked up Jonny Whitsett's 1929 JD engine. You talk about an outstanding job, Bruce outdid himself on this. We just want to sit around and look at it, It's going back in and will be running soon.

Gilbert Cagle is putting his 1948 Chief back together, Cavin Grinding bored the heads, thanks to Jimmy and Chris,

Burtam Hlcks is still getting parts for his 46 Harley.

Ron Elliott is taking part of Super Cycle and turning it into a musume,all the old bikes, ect.

Fleming Horne is doing very well after his operation anmd is selling some of his bikes.

John Munous is just about well from his contact with the pavement, you have to watch that sand in the curves.

Bill Fowler has his 1948 Chief down and is repainting it, also try to stop some of the leaks that some of the old bikes have. Oh yeah!

Also our good freind, Sam Simmons had some heart problems and is up and about, He came by Super Cycle, Ron said he wanted anything to ndo with the police and fire department, Sam just happened to have a fire truck and police petal cars in his Van. Yes we bought them

Calvin,our leader is still working on his garage.someday?????

CLASSIFIED ADS

**30 YEAR COLLECTION OF SPORSTER PARTS
1957 - 80 INCLUDING 1957 XLCH ENGINE COMPLETE
\$10,000**

RON ELLIOTT 901/725-0066

**LOOKING FOR OLD PEDAL CARS.
SAM SIMMONS 901/725-0633**

**NEED FRONT FENDER FOR 1929 JD
JONNY WHITSETT
901/522-4300**

**WANT 65-69 HD FRAME
RON ELLIOTT, 901/725-0066**

**NEED HEADS FOR 1939 SPT SCOUT
BILL FOWLER - 662-280-0920**

**NEXT MEETING AT SUPER CYCLE
ON AUGUST 13, 2000
AT 1:00 PM**

**GRAND OPENING
OF MUSEUM
901-725-5991**