

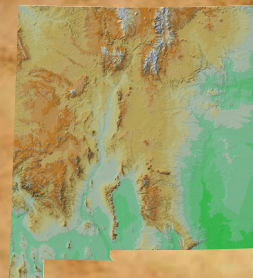


AIPG 53<sup>rd</sup> National Conference

Land of Geologic Confluences  
and Cultural Crossroads



September 10-13, 2016



NM Bureau of Geology & Mineral Resources

## Call for Abstracts

This year the 53<sup>rd</sup> meeting of the American Institute of Professional Geologists National Conference is being held in the beautiful and historic city of Santa Fe, New Mexico. Set aside September 10<sup>th</sup> to the 13<sup>th</sup> to attend this year's conference, "New Mexico: Land of Geologic Confluences and Cultural Crossroads". The New Mexico section is co-sponsoring the event and are delighted to host and show off their enchanting land. It's an exciting time for Geologists as we are continuously challenged to work with economic resources and environmental responsibilities inherent to the profession. As always, the national conferences provide opportunities to learn from knowledgeable speakers and one another's experiences. The planning committee has been working to organize several field trips and tours. The geologically dynamic landscapes of northern and central New Mexico include the

unique rift valley of the Rio Grande, stretching from southern Colorado to Chihuahua, Mexico. The confluence of three geologic provinces, the Colorado Plateau, the Basin and Range and the Southern Rocky Mountains has left wonderful landscapes and exciting geology. The rift has provided its inhabitants a north-south route following a bountiful river for several thousand years. Abundant resources are found here and ancient cultures established homelands that continue to thrive today.

Field trips include the Valles Caldera, Ortiz Gold Mine, Ghost Ranch, Taos Pueblo, Sandia Crest, and several other tours for you to experience these unique and rich crossroads.

Members and non-members are invited to submit an abstract for the technical sessions scheduled for

Monday, September 12<sup>th</sup> and Tuesday, September 13<sup>th</sup>.

### How To Submit an Abstract

To have your abstract considered for a presentation or poster, please go to <http://www.aipg.org/abstract/> to submit an abstract online by **June 6, 2016**. Abstracts must be in Word format, single spaced, 12 point Times New Roman, and should not exceed one page. No tables or pictures will be accepted. You will be notified by **June 22, 2016** if your abstract has been accepted. Authors who wish to publish a paper in AIPG's "The Professional Geologist" (TPG) can contact AIPG for additional information at [aipg@aipg.org](mailto:aipg@aipg.org).

### Call for Abstracts Important Dates

**June 6, 2016** ..... Abstracts Due  
**June 22, 2016** ..... Authors Notified

### Abstract Subject Areas

- |   |   |   |
|---|---|---|
| <ul style="list-style-type: none"> <li>• Climate Change</li> <li>• Earth Science Education</li> <li>• Earthquake Hazards / Seismology</li> <li>• Education / Professional Standards</li> <li>• Energy</li> <li>• Engineering Geology</li> <li>• Environmental Geology</li> <li>• Geochemistry</li> <li>• Geohazards</li> <li>• Geology of New Mexico</li> <li>• Geophysics</li> <li>• Geotechnical Engineering</li> </ul> | <ul style="list-style-type: none"> <li>• Geothermal Energy</li> <li>• GIS / Remote Sensing / LiDAR</li> <li>• Hydraulic Fracturing</li> <li>• Hydrology / Groundwater / Surface Water</li> <li>• Impact Structures and Meteorites</li> <li>• Mapping</li> <li>• Mineralogy</li> <li>• Mining / Industrial Minerals / Economic Geology</li> <li>• Oil and Gas</li> <li>• Paleontology</li> </ul> | <ul style="list-style-type: none"> <li>• Professional - Media Relations, Ethics, Communication</li> <li>• Regional Tectonics</li> <li>• Resource Development</li> <li>• Rio Grande Rift</li> <li>• Social Licensing</li> <li>• Transportation Projects</li> <li>• Volcanology</li> <li>• Water Management</li> <li>• Water Quality</li> <li>• Water Resources</li> <li>• Young Professionals</li> </ul> |
|---|---|---|