



# Plants of the Wild

## Container-grown Native Plants

### 2018 AVAILABILITY LIST

Updated: January 26, 2018

509-284-2848

[www.plantsofthewild.com](http://www.plantsofthewild.com)



SCIENTIFIC NAME	COMMON NAME	5.5 CI PLUG	10 CI PLUG	3.5" POT	40 CI PLUG	TALL 1 GALLON	1 GALLON	2 GALLON	5 GALLON
<i>Abies concolor</i>	Concolor Fir	150	☒	☒	☒	☒	0	☒	☒
<i>Abies grandis</i>	Grand Fir	0	☒	☒	☒	☒	0	☒	☒
<i>Acer circinatum</i>	Vine Maple	☒	☒	☒	☒	☒	0	0	0
<i>Acer glabrum</i>	Rocky Mt. Maple	☒	0	☒	0	☒	10	20	0
<i>Achillea millefolium</i>	Common Yarrow	☒	400	400	☒	☒	☒	☒	☒
<i>Allium cernuum</i>	Nodding Onion	☒	☒	800	☒	☒	☒	☒	☒
<i>Allium schoenoprasum</i>	Wild Chives	☒	150	200	☒	☒	☒	☒	☒
<i>Alnus incana</i>	Thinleaf (Mt.) Alder	☒	2900	☒	0	40	100	10	75
<i>Alnus rubra</i>	Red Alder	☒	330	☒	☒	☒	☒	☒	☒
<i>Alnus sinuata</i>	Sitka Alder	☒	540	☒	☒	75	0	0	0
<i>Amelanchier alnifolia</i>	Saskatoon Serviceberry	☒	0	☒	0	0	750	100	0
<i>Anaphalis margaritacea</i>	Pearly Everlasting	☒	1000	0	☒	☒	☒	☒	☒
<i>Antennaria microphylla</i>	Rosy Pussytoes	☒	☒	200	☒	☒	☒	☒	☒
<i>Aquilegia cerulea</i>	Blue Columbine	☒	0	40	☒	☒	☒	☒	☒
<i>Arctostaphylos uva-ursi</i>	Kinnickinnick	☒	0	700	☒	☒	450	☒	☒
<i>Artemisia frigida</i>	Fringed Sage	☒	0	0	☒	☒	0	0	☒
<i>Artemisia tridentata t.</i>	Basin Big Sage	0	7000	☒	600	☒	0	0	☒
<i>Artemisia tridentata v.</i>	Mountain Sage	0	6000	☒	☒	☒	200	☒	☒
<i>Artemisia tridentata w.</i>	Wyoming Sage	500	8000	☒	☒	☒	0	☒	☒
<i>Asarum caudatum</i>	Wild Ginger	☒	☒	0	☒	☒	☒	☒	☒
<i>Asclepias speciosa</i>	Showy Milkweed	☒	0	500	☒	☒	☒	☒	☒
<i>Aster eatonii</i>	Eaton's Aster	☒	☒	20	☒	☒	☒	☒	☒
<i>Aster occidentalis</i>	Western Aster	☒	300	250	☒	☒	30	☒	☒
<i>Atriplex canescens</i>	Fourwing Saltbrush	☒	0	☒	☒	☒	0	☒	☒
<i>Balsamorhiza sagitata</i>	Arrowleaf Balsamroot	☒	50	☒	☒	☒	0	☒	☒
<i>Betula glandulosa</i>	Bog Birch	☒	☒	☒	☒	☒	0	130	☒
<i>Betula occidentalis</i>	Water Birch	☒	0	☒	☒	0	0	200	90
<i>Betula papyrifera</i>	Paper Birch	☒	0	☒	100	☒	400	15	0
<i>Betula nigra</i>	River Birch	☒	☒	☒	☒	0	40	250	20
<i>Calamagrostis canadensis</i>	Blue Joint Reedgrass	☒	20	☒	☒	☒	☒	☒	☒
<i>Camassia quamash</i>	Common Camas	☒	☒	900	BULBS AVAILABLE - FALL 2018				
<i>Caragana arborescens</i>	Siberian Pea Shrub	☒	0	☒	200	☒	650	0	☒
<i>Carex amplifolia</i>	Big Leaf Sedge	☒	800	☒	☒	☒	☒	☒	☒
<i>Carex aperta</i>	Columbian Sedge	☒	100	☒	☒	☒	☒	☒	☒
<i>Carex aquatilis</i>	Water Sedge	☒	4000	☒	0	☒	☒	☒	☒
<i>Carex lanuginosa</i>	Woolly Sedge	☒	0	☒	0	☒	☒	☒	☒
<i>Carex lenticularis</i>	Lens Sedge	☒	2400	☒	300-20"	☒	☒	☒	☒
<i>Carex microptera</i>	Small-winged Sedge	☒	1300	☒	0	☒	☒	☒	☒
<i>Carex nebrascensis</i>	Nebraska Sedge	☒	200	☒	0	☒	☒	☒	☒
<i>Carex obnupta</i>	Slough Sedge	☒	0	☒	☒	☒	☒	☒	☒
<i>Carex simulata</i>	Shortbeaked Sedge	☒	0	☒	☒	☒	☒	☒	☒
<i>Carex stipata</i>	Sawbeaked Sedge	☒	0	☒	☒	☒	☒	☒	☒
<i>Carex utriculata</i>	Beaked Sedge	☒	900	☒	0	☒	☒	☒	☒
<i>Carex vesicaria</i>	Inflated Sedge	☒	2000	☒	0	☒	☒	☒	☒
<i>Ceanothus velutinus</i>	Snowbrush Ceanothus	☒	275	☒	☒	☒	☒	☒	☒
<i>Ceratoides lanata</i>	Winterfat	☒	200	☒	☒	☒	0	0	☒
<i>Cercocarpus ledifolius</i>	Curlleaf Mahogany	☒	90	☒	20	0	100	0	☒
<i>Cercocarpus montanus</i>	True Mt. Mahogany	☒	0	☒	☒	☒	300	☒	☒
<i>Chrysothamnus nauseosus</i>	Rubber Rabbitbrush	0	0	☒	0	☒	0	☒	☒
<i>Chrysothamnus viscidiflorus</i>	Low Green Rabbitbrush	3500	0	☒	☒	☒	0	0	☒
<i>Clematis ligusticifolia</i>	Western Clematis	☒	0	☒	☒	☒	0	☒	☒
<i>Cornus sericea</i>	Redsier Dogwood	☒	1400	☒	0	1000	2000	200	100
<i>Crataegus douglasii</i>	Douglas Hawthorne	☒	3600	☒	0	0	1400	0	0
<i>Deschampsia caespitosa</i>	Tufted Hairgrass	☒	1300	300	☒	☒	☒	☒	☒
<i>Echinacea purpurea</i>	Purple Coneflower	☒	1000	400	☒	☒	☒	☒	☒
<i>Eleocharis palustris</i>	Creeping Spikerush	☒	500	☒	☒	☒	☒	☒	☒
<i>Elymus cineris</i>	Basin Wild Rye	☒	900	☒	☒	☒	0	☒	☒
<i>Elymus glauca</i>	Blue Wild Rye	☒	1000	☒	☒	☒	☒	☒	☒
<i>Erigeron speciosus</i>	Showy Fleabane	☒	1700	0	☒	☒	☒	☒	☒

☒=NOT TYPICALLY GROWN IN THIS SIZE; 0=SOLD OUT IN THIS SIZE

Can't find exactly what you are looking for? Call us...

→ CONTRACT GROWING IS ALWAYS AN OPTION ←

SPRING 2018

SCIENTIFIC NAME	COMMON NAME	5.5 CI PLUG	10 CI PLUG	3.5' POT	40 CI PLUG	TALL 1 GALLON	1 GALLON	2 GALLON	5 GALLON
<i>Eriogonum heracleoides</i>	Wyeth Buckwheat	☒	100	140	☒	☒	☒	☒	☒
<i>Eriogonum nivium</i>	Snow Buckwheat	☒	1500	300	☒	☒	0	☒	☒
<i>Eriogonum thymoides</i>	Thymeleaf Buckwheat	☒	650	0	☒	☒	☒	☒	☒
<i>Festuca glauca</i>	Blue Fescue	☒	0	600	☒	☒	☒	☒	☒
<i>Festuca idahoensis</i>	Idaho Fescue	☒	2500	500	☒	☒	250	☒	☒
<i>Fragaria chiloensis</i>	Coastal Strawberry	☒	☒	400	☒	☒	☒	☒	☒
<i>Fragaria vesca</i>	Woodland Strawberry	☒	☒	475	☒	☒	☒	☒	☒
<i>Fragaria virginiana</i>	Wild Strawberry	☒	☒	200	☒	☒	☒	☒	☒
<i>Gaillardia aristata</i>	Indian Blanket Flower	☒	2700	400	☒	☒	0	☒	☒
<i>Geranium viscosissimum</i>	Sticky Geranium	☒	200	20	☒	☒	☒	☒	☒
<i>Geum triflorum</i>	Prairie Smoke	☒	1800	75	☒	☒	☒	☒	☒
<i>Glyceria grandis</i>	American Mannagrass	☒	250	☒	☒	☒	☒	☒	☒
<i>Glyceria occidentalis</i>	Western Mannagrass	☒	80	☒	☒	☒	☒	☒	☒
<i>Grayia spinosa</i>	Spiny Hopsage	900	0	☒	☒	☒	☒	☒	☒
<i>Helianthella uniflora</i>	One Flowered Helianthella	☒	50	☒	☒	☒	☒	☒	☒
<i>Holodiscus discolor</i>	Oceanspray	☒	0	☒	0	☒	0	100	☒
<i>Iris missouriensis</i>	Missouri Iris	☒	0	450	☒	☒	☒	☒	☒
<i>Juncus articulatus</i>	Jointed Rush	☒	700	☒	☒	☒	☒	☒	☒
<i>Juncus balticus</i>	Baltic Rush	☒	3000	☒	0	☒	☒	☒	☒
<i>Juncus effusus</i>	Common Rush	☒	500	☒	0	☒	☒	☒	☒
<i>Juncus ensifolius</i>	Daggerleaf Rush	☒	500	☒	0	☒	☒	☒	☒
<i>Juncus tenuis</i>	Slender Rush	☒	1000	☒	0	☒	☒	☒	☒
<i>Juniperus horizontalis</i>	Horizontal Juniper	☒	☒	☒	☒	☒	175	☒	☒
<i>Juniperus scopulorum</i>	Rocky Mt. Juniper	0	0	☒	700	☒	200	0	☒
<i>Koeleria macrantha</i>	Prairie Junegrass	☒	650	☒	☒	☒	☒	☒	☒
<i>Larix occidentalis</i>	Western Larch	*LIMITED LOT AVAILABILITY*	3000	☒	☒	40	175	☒	☒
<i>Linum lewisii</i>	Blue Flax	☒	1700	50	☒	☒	☒	☒	☒
<i>Lupinus argenteus</i>	Silver Lupine	☒	1500	☒	☒	☒	☒	☒	☒
<i>Lupinus polyphyllus</i>	Big Leaf Lupine	☒	2000	☒	☒	☒	☒	☒	☒
<i>Lupinus sericeus</i>	Blue Lupine	☒	1500	☒	☒	☒	☒	☒	☒
<i>Mahonia aquafolium</i>	Tall Oregon Grape	☒	☒	750	☒	☒	0	0	0
<i>Mahonia repens</i>	Creeping Oregon Grape	☒	0	0	☒	☒	50	☒	☒
<i>Malus pumila</i>	Common Apple	☒	☒	☒	☒	10	☒	☒	☒
<i>Oryzopsis hymenoides</i>	Indian Ricegrass	☒	1900	0	☒	☒	☒	☒	☒
<i>Penstemon attenuatus</i>	Taperleaf Penstemon	☒	0	125	☒	☒	☒	☒	☒
<i>Penstemon eatonii</i>	Firecracker Penstemon	☒	350	100	☒	☒	☒	☒	☒
<i>Penstemon fruiticosa</i>	Shrubby Penstemon	☒	200	700	☒	☒	☒	☒	☒
<i>Penstemon procerus</i>	Little Flower Penstemon	☒	☒	200	☒	☒	☒	☒	☒
<i>Penstemon strictus</i>	Rocky Mt. Penstemon	☒	250	500	☒	☒	☒	☒	☒
<i>Penstemon venustus</i>	Blue Mt. Penstemon	☒	0	0	☒	☒	☒	☒	☒
<i>Philadelphus lewisii</i>	Mockorange	☒	0	☒	700	☒	0	200	30
<i>Physocarpus capitatus</i>	Pacific Ninebark	☒	0	☒	80	0	0	30	0
<i>Physocarpus malvaceus</i>	Mallow Ninebark	☒	0	☒	0	☒	150	70	0
<i>Picea englemanii</i>	Englemann Spruce	600	☒	☒	☒	0	300	0	☒
<i>Picea pungens 'glauca'</i>	Colorado Blue Spruce	3500	0	☒	☒	☒	150	0	0
<i>Pinus aristata</i>	Bristlecone Pine	400	☒	☒	☒	☒	☒	☒	☒
<i>Pinus contorta latifolia</i>	Lodgepole Pine	0	☒	☒	☒	15	0	☒	☒
<i>Pinus flexilis</i>	Limber Pine	☒	☒	☒	☒	☒	☒	0	15
<i>Pinus monticola</i>	Western White Pine	3000	☒	☒	☒	☒	0	0	☒
<i>Pinus nigra</i>	Austrian Pine	300	☒	☒	☒	☒	400	☒	☒
<i>Pinus ponderosa</i>	Ponderosa Pine	*LIMITED LOT AVAILABILITY*	25000	0	☒	1800	25	1100	0
<i>Pinus sylvestris</i>	Scotch Pine	800	☒	☒	☒	☒	0	☒	0
<i>Poa sandburgii</i>	Sandburg Bluegrass	☒	700	☒	☒	☒	☒	☒	☒
<i>Polystichum munitum</i>	Sword Fern	☒	☒	200	☒	☒	☒	☒	☒
<i>Populus 'hybrid'</i>	Hybrid Poplar	☒	575	☒	225	0	600	☒	☒
<i>Populus tremuloides</i>	Quaking Aspen	☒	2600	☒	0	0	1900	375	400
<i>Populus trichocarpa</i>	Black Cottonwood	☒	900	☒	0	0	200	0	75
<i>Potentilla fruticosa</i>	Shrubby Cinquefoil	☒	☒	☒	☒	☒	475	10	☒
<i>Potentilla gracilis</i>	Slender Cinquefoil	☒	2300	225	☒	☒	☒	☒	☒
<i>Prunus besseyii</i>	Western Sand Cherry	☒	☒	☒	☒	☒	0	90	☒
<i>Prunus americana</i>	American Plum	☒	☒	☒	☒	250	200	☒	☒

Can't find exactly what you are looking for? Call us...

→ CONTRACT GROWING IS ALWAYS AN OPTION ←

SPRING 2018

SCIENTIFIC NAME	COMMON NAME	5.5 CI PLUG	10 CI PLUG	3.5' POT	40 CI PLUG	TALL 1 GALLON	1 GALLON	2 GALLON	5 GALLON
<i>Prunus virginiana</i>	Common Chokecherry	☒	0	☒	700	0	100	375	675
<i>Pseudogenaria spicata</i>	Blue Bunch Wheatgrass	☒	800	☒	☒	☒	☒	☒	☒
<i>Pseudotsuga menziesii</i>	R/M Douglas Fir <small>*LIMITED LOT AVAILABILITY*</small>	13000	0	☒	275	☒	1200	☒	☒
<i>Purshia tridentata</i>	Antelope Bitterbrush	☒	0	☒	0	☒	0	0	☒
<i>Rhus glabra</i>	Smooth Sumac	☒	50	☒	0	☒	0	250	0
<i>Rhus trilobata</i>	Threeleaf Sumac	☒	0	☒	☒	☒	0	☒	☒
<i>Ribes aureum</i>	Golden Currant	☒	0	☒	1100	0	200	75	0
<i>Ribes cereum</i>	Wax Currant	☒	0	☒	50	☒	0	☒	☒
<i>Ribes sanguineum</i>	Red Flowering Currant	☒	0	☒	0	☒	0	☒	☒
<i>Rosa nutkana</i>	Nootka Rose	☒	85	☒	0	275	140	0	0
<i>Rosa rugosa</i>	Rugosa Rose	☒	☒	☒	☒	25	130	70	☒
<i>Rosa woodsii</i>	Woods Rose	☒	0	☒	400	0	600	250	900
<i>Rubus parviflorus</i>	Thimbleberry	☒	1280	☒	0	0	60	☒	☒
<i>Salix bebbiana</i>	Bebb's Willow	☒	2200	☒	70	300	175	☒	☒
<i>Salix boothii</i>	Booth Willow	☒	120	☒	0	300	175	☒	☒
<i>Salix drummondiana</i>	Drummond Willow	☒	1000	☒	0	650	225	☒	☒
<i>Salix exigua</i>	Coyote Willow	☒	5000	☒	0	300	200	45	☒
<i>Salix exigua 'melanopsis'</i>	Sandbar Willow	☒	600	☒	☒	175	☒	☒	☒
<i>Salix geyeriana</i>	Geyer Willow	☒	2200	☒	0	375	60	☒	☒
<i>Salix lasiandra</i>	Pacific Willow	☒	840	☒	30	80	100	☒	0
<i>Salix lemmonii</i>	Lemmon's Willow	☒	100	☒	☒	☒	0	0	☒
<i>Salix purpurea</i>	Artic Blue Willow	☒	☒	☒	☒	☒	0	30	☒
<i>Salix rigida 'mackenziana'</i>	Mackenzie Willow	☒	1000	☒	90	300	0	☒	☒
<i>Salix scouleriana</i>	Scouler Willow	☒	800	☒	0	100	0	☒	☒
<i>Salix sitchensis</i>	Sitka Willow	☒	1100	☒	0	300	750	☒	☒
<i>Sambucus cerulea</i>	Blue Elderberry	☒	1400	☒	0	60	0	0	0
<i>Scirpus acutus</i>	Hardstem Bulrush	☒	2300	☒	☒	☒	☒	☒	☒
<i>Scirpus ameicanus</i>	Chairmaker's Bulrush	☒	0	☒	☒	☒	☒	☒	☒
<i>Scirpus cyperinus</i>	Woolgrass	☒	1100	☒	☒	☒	☒	☒	☒
<i>Scirpus maritimus</i>	Alkali Bulrush	☒	0	☒	☒	☒	☒	☒	☒
<i>Scirpus microcarpus</i>	Small-fruited Bulrush	☒	400	☒	☒	☒	☒	☒	☒
<i>Scirpus pungens</i>	Threesquare Bulrush	☒	600	☒	☒	☒	☒	☒	☒
<i>Scirpus validus</i>	Softstem Bulrush	☒	400	☒	☒	☒	☒	☒	☒
<i>Schizachyrium scoparium</i>	Little Bluestem	☒	500	☒	☒	☒	☒	☒	☒
<i>Shepherdia argenteus</i>	Silver Buffalo berry	☒	1980	☒	400	☒	275	50	☒
<i>Shepherdia canadensis</i>	Russat Buffalo berry	☒	0	☒	200	☒	600	90	☒
<i>Sisyrinchium idahoensis</i>	Blue Eyed Grass	☒	☒	200	☒	☒	☒	☒	☒
<i>Solidago canadensis</i>	Canada Goldenrod	☒	2000	0	☒	☒	☒	☒	☒
<i>Solidago missouriensis</i>	Missouri Goldenrod	☒	2800	475	☒	☒	☒	☒	☒
<i>Sorbus scopulina</i>	Dwarf Mt. Ash	☒	0	☒	☒	0	0	30	0
<i>Spiraea betulifolia</i>	Shinyleaf Spiraea	☒	300	☒	☒	☒	0	0	☒
<i>Spiraea douglasii</i>	Douglas Spiraea	☒	900	☒	50	300	50	0	0
<i>Symphoricarpos albus</i>	Common Snowberry	☒	4500	☒	0	0	0	140	0
<i>Syringa vulgaris</i>	Common Lilac	☒	☒	☒	☒	☒	100	0	☒
<i>Thuja plicata</i>	Western Red Cedar	3300	☒	☒	700	0	240	10	☒
<i>Typha latifolia</i>	Cattail	☒	0	☒	☒	☒	☒	☒	☒
<i>Vaccinium membranaceum</i>	Mt. Huckleberry	☒	0	☒	☒	☒	☒	☒	☒
<i>Viburnum trilobum</i>	Highbush Cranberry	☒	☒	☒	☒	☒	80	100	☒
<i>Xerophyllum tenax</i>	Beargrass	☒	0	☒	☒	☒	☒	☒	☒

WE ALSO  
OFFER:

- ✦ DELIVERY TO YOUR HOME, BUSINESS OR JOB SITE
- ✦ PROMOTIONAL SEED PACKETS      ✦ INDIVIDUALLY WRAPPED "GIVE-AWAY" TREES
- ✦ ON-SITE CONSULTATIONS      ✦ INFORMATIONAL TALKS      ✦ CONTRACT GROWING



Can't find exactly what you are looking for? Call us...

→ CONTRACT GROWING IS ALWAYS AN OPTION ←

SPRING 2018

## ... NATIVE ROOTS ...

SCIENTIFIC NAME	COMMON NAME	3.5' POT
<i>Agastache cusickii</i>	Cusick's Hyssop	225
<i>Aquilegia chrysantha</i>	Golden Columbine	150
<i>Aquilegia desertorum</i>	Desert Columbine	150
<i>Aquilegia scopulorum</i>	Utah Columbine	25
<i>Artemisia frigida</i>	Fringed Sage	350
<i>Erigeron glaucus</i>	Seaside Daisy	120
<i>Erigeron speciosus</i>	Aspen Daisy	200
<i>Eriogonum brevicaula</i>	Short-stem Buckwheat	0
<i>Eriogonum Jamesii</i>	James' Buckwheat	75
<i>Eriogonum strictum</i>	Strict Buckwheat	200
<i>Festuca idahoensis</i>	Idaho Fescue	40
<i>Gaillardia aristata</i>	Blanketflower	160
<i>Geum rossii</i>	Ross' Avens	400
<i>Hymenoxis acaulis</i>	Sundancer Daisy	0
<i>Mirabilis multiflora</i>	Desert 4 o'clock	15
<i>Monarda menthaefolia</i>	Western Beebalm	275
<i>Penstemon confertus</i>	Yellow Beardtounge	100
<i>Penstemon cyananthus</i>	Wasatch Penstemon	0
<i>Penstemon montanus</i>	Cordroot Beardtounge	150
<i>Penstemon pinifolius</i>	Pineleaf Penstemon	125
<i>Penstemon richardsonii</i>	Richardson's Beardtounge	100
<i>Penstemon rostriflorus</i>	Bridges Beardtounge	90
<i>Penstemon strictus</i>	Rocky Mountain Penstemon	250
<i>Penstemon whippleanus</i>	Whipple's Penstemon	0
<i>Poa secunda</i>	Big Bluegrass	0
<i>Potentilla thurberi</i>	Thurber's Cinquefoil	125
<i>Salvia pachyphylla</i>	Giant Purple Sage	200
<i>Sporobolus wrightii</i>	Giant Sacaton	50
<i>Townsendia incana</i>	Hoary Townsend's Daisy	100
<i>Zinnia grandiflora</i>	Desert Zinnia	75



We are so excited to be able to offer these plants!!

After years of research, this line of plants has been established to provide home and urban landscapes with the durability of native plants, yet the predictability of ornamentals.

For more information check out our website at:

[www.plantsofthewild.com](http://www.plantsofthewild.com)

## THE BDTTDM LINE

RETAIL 1-99	CONTAINER SIZE	WHOLESALE 100-499	WHOLESALE 500-999	WHOLESALE 1000-2499	WHOLESALE 2500+
\$1-00 <del>\$2-50</del>	<b>5.5 CUBIC INCH CDNIFERS</b> <b>5.5 CU IN RM JUNIPER *NEW*</b> <b>8 CUBIC INCH CDNIFERS</b> <b>10 CUBIC INCH</b> <b>3.5' POT</b> <b>NATIVE RDDTS</b> <b>20 CUBIC INCH</b> <b>40 CUBIC INCH</b> <b>TALL 1 GALLON</b> <b>1 GALLON</b> <b>2 GALLON</b> <b>5 GALLON</b>	\$-75 <del>\$1-25</del>	\$-55 <del>\$1-00</del>	\$-50 <del>\$1-00</del>	\$-45 <del>\$-90</del>
\$2-00		\$1-50	\$1-25		\$1-00
\$2-50		\$1-75	\$1-50		
\$4-00		\$3-00	\$2-75	\$2-50	\$2-25
\$5-00		\$5-00			
\$3-50		\$3-00	\$2-75	\$2-50	
\$6-00		\$4-00	\$3-75	\$3-50	\$3-00
\$9-00		\$6-00			
\$9-00		\$4-50-\$6-00			
\$15-00		\$9-00-\$10-00	\$8-00-\$9-00		
\$30-00		\$20-00-\$25-00	\$18-00-\$20-00		

---PRICES AS OF AUGUST 2017---PRICES SUBJECT TO CHANGE AT ANY TIME WITHOUT NOTICE---



**ASK US ABOUT:**



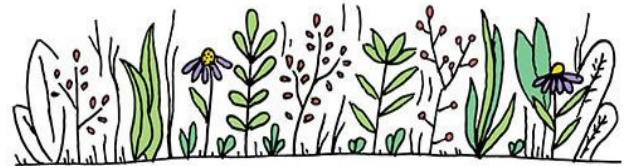
**ALL NATURAL  
PELLETIZED STRAW PRODUCT**

**YOUR ONE-SHOT SOLUTION...  
FOR FAST SEED ESTABLISHMENT!**

- Captures moisture and holds it near the seed
- Provides a straw mulch to protect the seed
- Weed-free, EASY APPLICATION!

# PROTECT YOUR INVESTMENT!

- ✓ VEXAR TUBES
- ✓ BAMBOO STAKES
- ✓ MULCH MATS
- ✓ MAT STAPLES
- ✓ FERTILIZER TABS



## ≡ GDT SEED? WE DO! ≡

Homestead Custom Seed blends for turf, pasture, hay and reclamation needs!

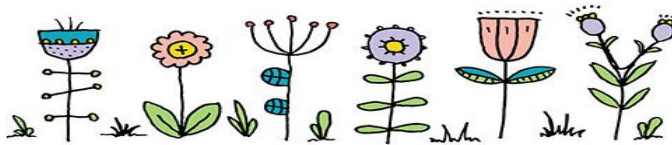
Bagged and ready to go in easy-to-handle 25 pound bags:

- ♣ NEIGHBORHOOD    ♣ LOW GROW    ♣ SHADE MASTER
- ♣ LOW MAINTENANCE    ♣ WATER-LESS LAWN
- ♣ EROSION CONTROL    ♣ VALUE PASTURE    ♣ HORSE PASTURE
- ♣ DRYLAND PASTURE    ♣ PALOUSE DRYLAND PASTURE
- ♣ WILDLIFE HABITAT    ♣ INLAND NW NATIVE    ♣ WETLAND

CUSTOM BLENDS ARE OUR SPECIALTY!!

Have something in mind? Did you get a recommendation from the NRCS?

Looking for the \*perfect\* blend? Let us help!



**OUR "HOUSE" WILDFLOWER MIXES INCLUDE:**

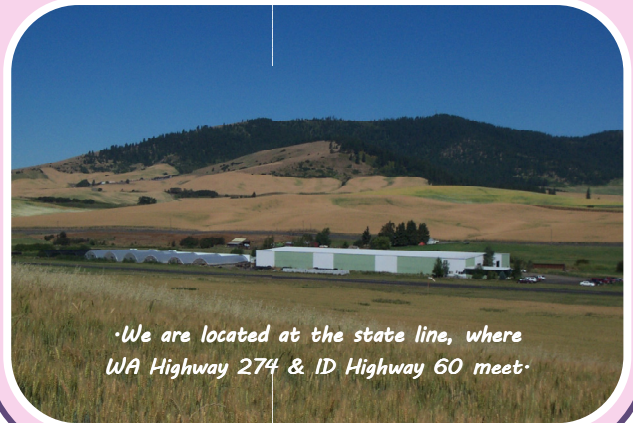
- HOMESTEAD** - A beautiful blend of wildflowers designed to fit most areas.
- HOMESTEAD W/GRASS** - Same great blend, with Idaho Fescue, too!
- PIONEER** - A collection of blooms, documented by explorers on their trip "out west".
- POLLINATOR** - Designed with butterflies, bees and hummingbirds in mind!

W  
I  
L  
D  
F  
L  
O  
W  
E  
R  
S

### CALL...EMAIL...SNAIL-MAIL...STOP BY!

Plants of the Wild  
 PO Box 866, 123 Stateline Road  
 Tekoa, WA 99033  
 509-284-2848

[www.plantsofthewild.com](http://www.plantsofthewild.com)  
[Kathy@plantsofthewild.com](mailto:Kathy@plantsofthewild.com)  
[Carrie@plantsofthewild.com](mailto:Carrie@plantsofthewild.com)



•We are located at the state line, where  
WA Highway 274 & ID Highway 60 meet•