

## Semi-Flush Threshold Light

### Compliances:

- ICAO: Annex 14 - Volume I
- FAA : L-850E AC150/5345-46 (Current Edition)
- IEC: TS 61827
- NATO: STANAG 3316

### Manual:

- Instruction Manual **UT- MT- 0573**



### Applications:

- The SLTH is a **high intensity semi-flush threshold** light that can be used for any category I, II and III ICAO, category I FAA and military runways.
- These fixtures are designed to be powered by **series circuits**.
- The field installation shall be in compliance with the requirements of ICAO - Annex 14, FAA or STANAG 3316 Specs.

### Performances and benefits:

- **½ inch protrusion above the ground:** FAA Style 2 and IEC Style 3.
- **Dome temperature less than 160° C** when the light is working at 6.6 A.
- **1000 hours lamp rated life** at 6.6 A or far over 3000 hours in field operating conditions.
- Significant **energy savings** and **stable chromaticity** thanks to the use of **dichroic filters**.
- Designed and manufactured with simplicity and **easy to maintain**.

### Features:

- Aluminium treated cast aluminium dome and lower cover.
- Unidirectional, 12" dia., with two lamps.
- Each prism is mechanically clamped to the dome by means of a mounting plate; a customized lens gasket avoids the use of sealing. Replacement is quick and easy.
- No optical adjustment is required after the replacement of the lamps, filters or prisms.
- An O-ring placed outside around the dome avoids dirt deposits between light unit and mounting assembly.
- The removal of the fixture is easy thanks to the two seats provided on the dome.

### Luminous Sources:

- Two 105W 6.6A tungsten-halogen lamps complete with dichroic reflector and cable with male faston terminal.

### Power Supply:

- From 200W up to 300W series transformer.

### Example of how to order:

**Basic P/N:** SLTH - A - ST - 200 - -

**Colour:** \_\_\_\_\_  
 G = Green  
 A = Green FAA \*\*

**Toe-in \*:** \_\_\_\_\_  
 RI = Left  
 LI = Right  
 ST = Straight

**Lamps:** \_\_\_\_\_  
 200 = 2x105W 6.6A reflectorized

**Mounting Assembly:** \_\_\_\_\_  
 B = L -868 Base or Shallow Base, 12" dia   
 O = No Mounting Assembly

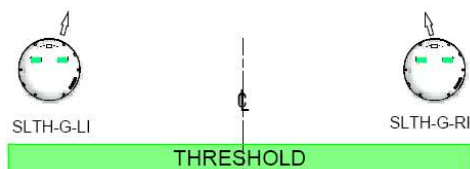
**Options:** \_\_\_\_\_  
 F = Fuse Cutouts  
 E = Electronic Cutout Relays

FAA Approved, ETL certified.

#### \* Toe-in

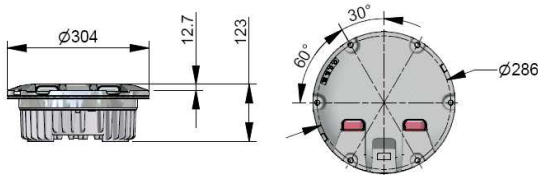
The beam aiming is not field adjustable.

\*\* Colour "A" may be combined with Toe-in "ST" only.

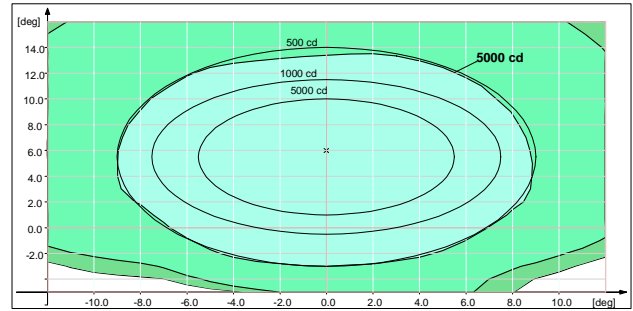


## Mounting base

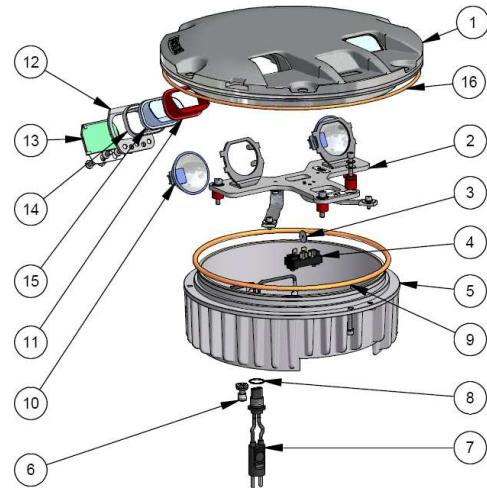
The light unit can be directly mounted on a deep base, L-868 type, size B.



Shipping Weights and Volumes	
	Light Unit
Weight (Kg)	7.5
Volume (cu.m)	0.022



Annex 14 Fig. A2-3 Threshold green light



## Accessories :

[P/N]	Description
315.1230	Base L-868 type, class IA, size B, 24" deep*
315.1420	Flange ring with pavement dam for L-868 base, size B, with O-ring and bolts
152.8110	Shallow base, 12" dia, one cable lead, with gasket and hardware

\* Sectional bases may be required depending upon the paving technique

For any information about isolating transformers and connectors, please see the specific catalogue pages

## Renewal Parts for light unit:

[N]	Description	[P/N]
1	Cast aluminium dome, complete with prisms and gaskets	153.0000
2	Complete lamp supporting plate, straight	153.1011
2	Complete lamp supporting plate, right toe-in	153.1021
2	Complete lamp supporting plate, left toe-in	152.1031
3	Fuse cutout	000.1466
4	Insulated strip with hardware	329.3025
5	Lower cover with 1 entry, complete with plug and valve	152.8055
6	Valve for watertightness test	786.7045
7	L-823 two-pole plug with cable leads, 0.500 m long, and with terminal bush	329.0050
8	O-ring for terminal bush	758.2035
9	Silicone O-ring for light unit (between dome and lower cover)	758.2025
10	105 W tungsten-halogen lamp, 6.6 A, with dichroic reflector	760.2190
11	Silicone gasket for prism	325.0311
12	Mounting plate for prism	341.0960
13	Dichroic FAA green filter with support	153.0070
13	Dichroic ICAO green filter with support	153.0040
14	Nylon gasket for prism	325.8010
15	Glass prism	318.1130
16	Silicone O-ring for dome	758.2016
	Vibration damping block with hardware	152.8080
	Electronic cutout relay with hardware	202.0012
	Grease for gasket, 400gr	752.1014
	Anaerobic adhesive for screws, 50cc	712.0025