

4792 Capacity and Range Chart:

OPERATING HEIGHT	LOAD RATINGS IN LBS. WITH OUTRIGGERS EXTENDED						AREA OF OPERATION				
	29 FT	44 FT	57 FT	71 FT	84 FT	92 FT					
5	47000										
8	36800	20300									
10	30900	20300	18400								
12	26100	20300	17400								
14	21900	19400	16800	14600							
16	18800	17300	15900	13800	12300						
20	14200	13900	13400	12300	10900	9825					
25	10400	10900	10600	10400	9800	9025					
30		8625	8625	85	8425	8225		7425			
35		34	6925	51	6925	60		6925	66	6725	68
40		19	5225	44	5625	56	5625	62	5625	65	5425
45			36	4625	50	4625	58	4625	61	4625	
50			26	3725	45	3725	53	3725	57	3725	
55			1	1225	38	3025	49	3025	53	3025	
60					31	2425	44	2425	49	2425	
65					21	2025	39	2025	45	2025	
70						32	1525	40	1525		
75						25	1225	35	1225		
80						14	825	28	825		

NOTE: RATINGS ABOVE THE HEAVY LINE ARE BASED ON STRUCTURAL COMPETENCE AND NOT ON MACHINE STABILITY.

DEDUCTIONS FROM RATED LOADS FOR HANDLING DEVICES:

OVERHAUL BALL: 125 LBS

1 SHEAVE LOAD BLOCK: 200 LBS

2 SHEAVE LOAD BLOCK: 250 LBS

AUX SHEAVE 50 LBS

STOWED JIB DEDUCTIONS

JIB CAPACITIES FOR ALL BOOM LENGTHS								
LOADED BOOM ANGLE	50°	55°	60°	65°	70°	75°	78°	80°
RETRACTED 26 FT JIB	725	1025	1525	2325	3225	4325	4925	5325
EXTENDED 44 FT JIB	425	725	1125	1525	2025	2525	2825	3125

NOTE: Please see the 4700 Series 6-page specification for a complete listing of standard features and optional equipment.

4792 Optional Mounting Configurations:

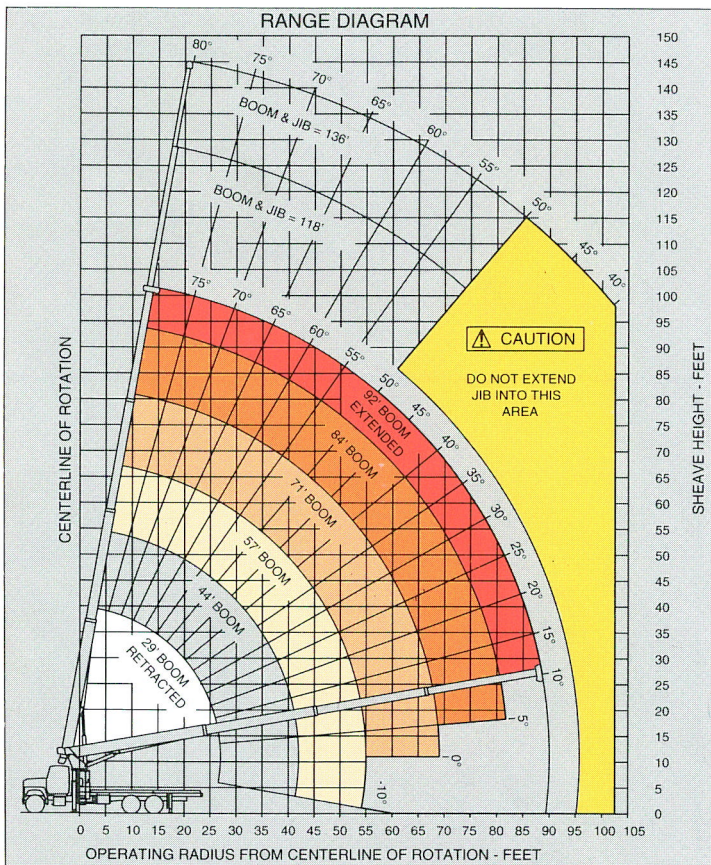
- Behind Cab (TC)
- Rear Mount (RM)
- Pedestal Mount (PM)

(Some standard features for the optional mounting configurations will vary. Please consult your Simon-RO dealer or factory for chassis and mounting requirements.)

TC 4792 Recommended Chassis Requirements:

- Gross Vehicle Weight 52,000 Lbs.
- Front Axle Weight Rating 18,000 Lbs.
- Rear Axle Weight Rating 34,000 Lbs.
- Wheelbase 246 In.
- Cab To Axle 168 In.
- Transmission Heavy-Duty (Neutral lock-up required for automatic transmission)
- Electrical System Heavy-Duty
- Cooling System Heavy-Duty
- Frame Section Modulus 26.0 Cubic In.
- RBM Per Frame Rail 2,860,000 In./Lbs.

Rope and Reeving:

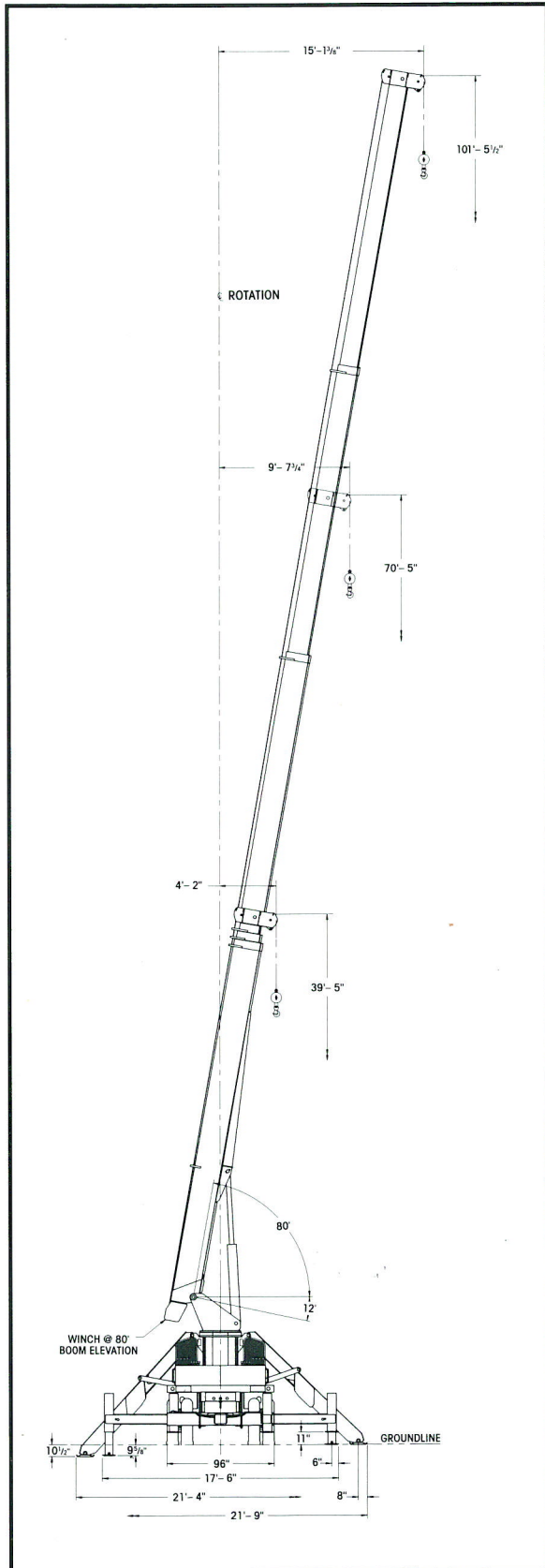


NOTE: Diagrams depict recommended mounting dimensions. The dimensions of optional pedestal and rear mounts will vary. Please consult your dealer or Simon-RO for specifics. Dimensions do not include load deflection.

1 PART LINE	2 PART LINE	3 PART LINE	4 PART LINE	5 PART LINE	CAUTION ANTI-TWO-BLOCK SYSTEM MUST BE IN GOOD OPERATING CONDITION BEFORE OPERATING CRANE. REFER TO OWNER'S MANUAL. KEEP AT LEAST 3 WRAPS OF LOADLINE ON DRUM AT ALL TIMES. USE ONLY 9/16" DIAMETER CABLE WITH 33,600 LB. BREAKING STRENGTH ON THIS MACHINE.
 OVERHAUL BALL LOADS UP TO 9,400 LBS. STD. CABLE 6,720 LBS. ROT RESIST. CABLE	 ONE SHEAVE LOAD BLOCK LOADS UP TO 19,200 LBS. STD. CABLE 13,440 LBS. ROT RESIST. CABLE	 ONE SHEAVE LOAD BLOCK LOADS UP TO 28,800 LBS. STD. CABLE 20,160 LBS. ROT RESIST. CABLE	 TWO SHEAVE LOAD BLOCKS LOADS UP TO 38,400 LBS. STD. CABLE 28,800 LBS. ROT RESIST. CABLE	 AUX SHEAVE TWO SHEAVE LOAD BLOCKS LOADS UP TO 48,000 LBS. STD. CABLE 33,600 LBS. ROT RESIST. CABLE	

THIS MACHINE COMPLIES WITH OSHA REGULATIONS 1910.180 AND 1926.550 WHERE APPLICABLE AT DATE OF MANUFACTURE

Dimensional Data:



TC 4792:

Maximum Sheave Height with four-section, 92-foot boom: 101'.

Maximum lifting radius: 80'.

Maximum sheave height with 44' jib: 144'.

Maximum lifting capacity: 47,000 lbs.

TC 4792 Weights:

Standard TC 4792 with 21' subframe and fluids:23,900 lbs.
 Optional 21' wood flatbed:1,865 lbs.
 Optional 44' two-stage jib:1,340 lbs.

Minimum axle weights with crane installed on truck and in stowed configuration for 85% stability (without jib).

Front Axle12,400 lbs.
 Rear Axle28,300 lbs.

Do Not Operate Within 10 Feet Of Overhead Power Lines.

