

**LOT #4-LAKE VIEW SP#407, A.F.#789714**  
A.P.#272217120690

**LOT #5-LAKE VIEW SP#407, A.F.#789714**  
A.P.#272217120680

**LEGEND**

- (APPLIES TO ALL SHEETS) SET 5/8" REBAR & 2.5" LUMINAR CAP, 150X150
- SET 5/8" REBAR & PLASTIC CAP, 150X150
- FOUND REBAR AND CAP PER PLAT OF PHASE 1 & 2
- FOUND MONUMENT AS NOTED
- ② COUNT DESIGNATED PARCEL ADDRESS

**LOT DETAIL SHEET**

**CLOS CHEVALLE P.D.**

PHASE 3

LOTS 54-65

SCALE 1" = 60'

**Pinnacle Surveying**

**Tim Bollingerworth, PLS**

601 W. Woodin Ave., P.O. Box 1107 - Chelan Washington, 98816

509.682.2266 - [tim@pinnacle.com](mailto:tim@pinnacle.com)

DRAWN BY: JH

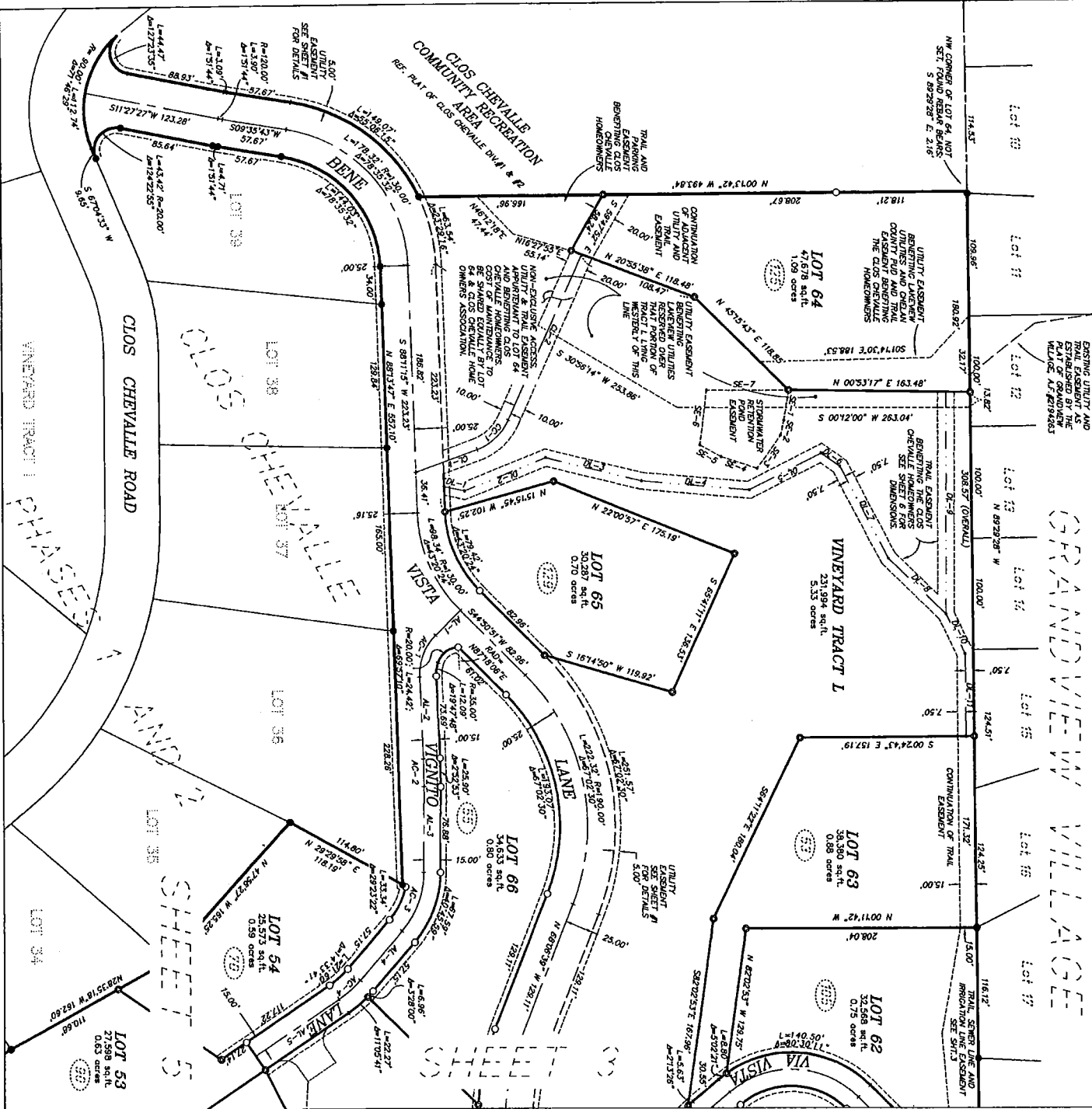
DATE: 5-16-06

FILE: 206027 PSL/SLC

PROJECT: K1208027/DPR/PLAT

SHT 3 OF 6

30/87



**LOT DETAIL SHEET**

**CLOS CHEVALLE P.D.**

**PHASE 3**

LOTS 63-66

**LEGEND**

- (A) APPLIES TO ALL SHEETS
- (B) SET 5/8" REBAR & 2.5" ALUMINUM CAP LSPN1480
- (C) SET 5/8" REBAR & PLASTIC CAP LSPN1480
- (D) ROUND REBAR AND CAP PER PLAT OF PHASE 1 & 2
- (E) FOUND MONUMENT AS NOTED
- (F) COUNTY DESIGNATED PARCEL ADDRESS

**Pinnacle Surveying**

Tim Hollingsworth, PLS

601 W. Woodruff Ave., P.O. Box 1107, Chula Vista, Washington, 98164

360.662.2266 - holly.jph@verizon.net

DATE: 5-14-08

PROJECT: # 1266227/DMS/VINAL

DATE: 5-14-08

PROJECT: # 1266227/DMS/VINAL

SCALE: 1" = 60' FT

LOT 53  
27,568 sq. ft.  
0.63 acres

LOT 54  
25,573 sq. ft.  
0.58 acres

LOT 55  
25,573 sq. ft.  
0.58 acres

LOT 56  
25,573 sq. ft.  
0.58 acres

LOT 57  
25,573 sq. ft.  
0.58 acres

LOT 58  
25,573 sq. ft.  
0.58 acres

LOT 59  
25,573 sq. ft.  
0.58 acres

LOT 60  
25,573 sq. ft.  
0.58 acres

LOT 61  
25,573 sq. ft.  
0.58 acres

LOT 62  
25,573 sq. ft.  
0.58 acres

LOT 63  
25,573 sq. ft.  
0.58 acres

LOT 64  
25,573 sq. ft.  
0.58 acres

LOT 65  
25,573 sq. ft.  
0.58 acres

LOT 66  
25,573 sq. ft.  
0.58 acres

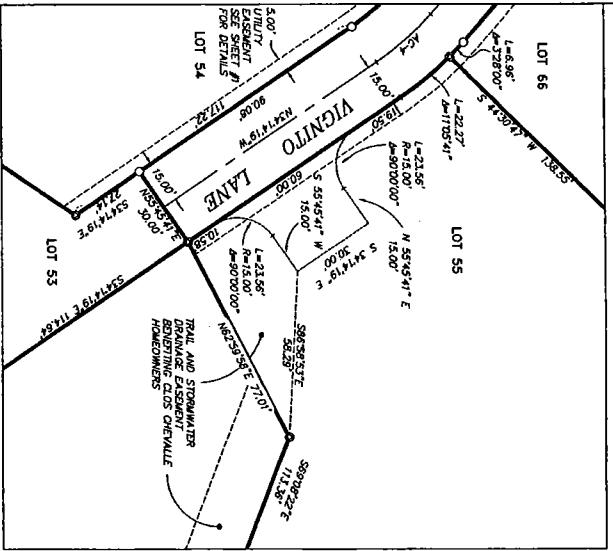
SHT 4 OF 6

30/88

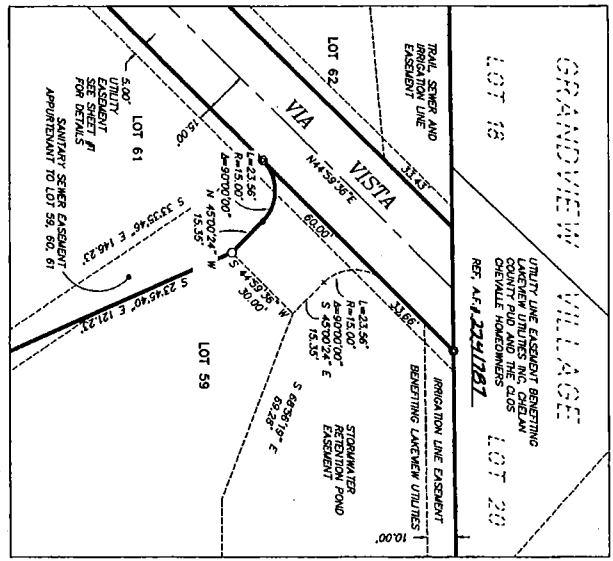


**EMERGENCY TURNAROUND EASEMENT DETAILS**  
(SCALE 1"=30')

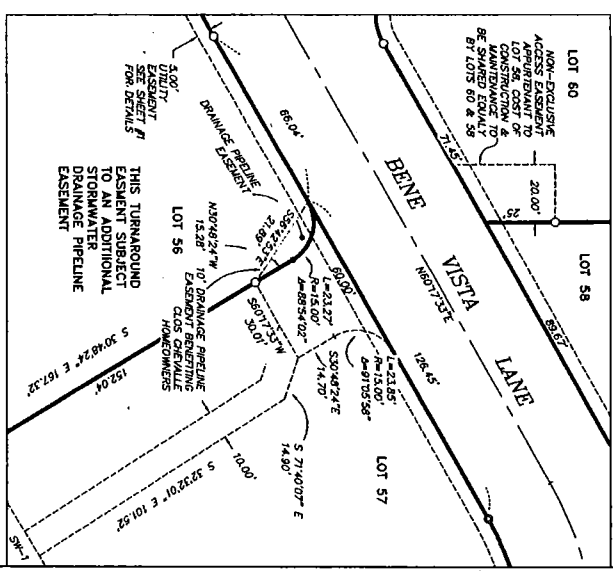
LOTS 55, 54 & 53 TURNAROUND;  
REFER TO SHEET #3



LOTS 59, 61 & 62 TURNAROUND;  
REFER TO SHEET #3



LOTS 56, 57 REFER TO SHEET #3



**VIGNITTO LANE: CENTERLINE**  
(REFER TO SHEET #3)

LINE NO.	BEARING	LINE	LENGTH	DELTA ANG.
AL-1	S84°02'00"E	LINE	317.2	
AL-2	S89°11'59"E	LINE	78.88	
AL-3	S84°42'00"E	LINE	57.15	
AL-4	S21°41'9"E	LINE	50.08	
AL-5	S82°49'00"E	LINE	40.11	
AL-6	S82°33'30"E	LINE	50.00	
AL-7	S82°19'30"E	LINE	50.00	
AL-8	S82°03'00"E	LINE	50.00	
AL-9	S81°47'30"E	LINE	50.00	
AL-10	S81°31'00"E	LINE	50.00	
AL-11	S81°14'30"E	LINE	50.00	

**VIA VISTA: CENTERLINE**  
(REFER TO SHEET #3)

LINE NO.	BEARING	LINE	LENGTH	DELTA ANG.
BL-1	N52°42'24"W	LINE	50.40	
BL-2	N44°39'58"W	LINE	50.40	
BL-3	N44°39'58"W	LINE	50.40	
BL-4	N44°39'58"W	LINE	50.40	
BL-5	N44°39'58"W	LINE	50.40	
BL-6	N44°39'58"W	LINE	50.40	
BL-7	N44°39'58"W	LINE	50.40	
BL-8	N44°39'58"W	LINE	50.40	
BL-9	N44°39'58"W	LINE	50.40	
BL-10	N44°39'58"W	LINE	50.40	
BL-11	N44°39'58"W	LINE	50.40	
BL-12	N44°39'58"W	LINE	50.40	
BL-13	N44°39'58"W	LINE	50.40	
BL-14	N44°39'58"W	LINE	50.40	
BL-15	N44°39'58"W	LINE	50.40	
BL-16	N44°39'58"W	LINE	50.40	
BL-17	N44°39'58"W	LINE	50.40	
BL-18	N44°39'58"W	LINE	50.40	
BL-19	N44°39'58"W	LINE	50.40	
BL-20	N44°39'58"W	LINE	50.40	
BL-21	N44°39'58"W	LINE	50.40	
BL-22	N44°39'58"W	LINE	50.40	
BL-23	N44°39'58"W	LINE	50.40	
BL-24	N44°39'58"W	LINE	50.40	
BL-25	N44°39'58"W	LINE	50.40	
BL-26	N44°39'58"W	LINE	50.40	
BL-27	N44°39'58"W	LINE	50.40	
BL-28	N44°39'58"W	LINE	50.40	
BL-29	N44°39'58"W	LINE	50.40	
BL-30	N44°39'58"W	LINE	50.40	
BL-31	N44°39'58"W	LINE	50.40	
BL-32	N44°39'58"W	LINE	50.40	
BL-33	N44°39'58"W	LINE	50.40	
BL-34	N44°39'58"W	LINE	50.40	
BL-35	N44°39'58"W	LINE	50.40	
BL-36	N44°39'58"W	LINE	50.40	
BL-37	N44°39'58"W	LINE	50.40	
BL-38	N44°39'58"W	LINE	50.40	
BL-39	N44°39'58"W	LINE	50.40	
BL-40	N44°39'58"W	LINE	50.40	
BL-41	N44°39'58"W	LINE	50.40	
BL-42	N44°39'58"W	LINE	50.40	
BL-43	N44°39'58"W	LINE	50.40	
BL-44	N44°39'58"W	LINE	50.40	
BL-45	N44°39'58"W	LINE	50.40	
BL-46	N44°39'58"W	LINE	50.40	
BL-47	N44°39'58"W	LINE	50.40	
BL-48	N44°39'58"W	LINE	50.40	
BL-49	N44°39'58"W	LINE	50.40	
BL-50	N44°39'58"W	LINE	50.40	
BL-51	N44°39'58"W	LINE	50.40	
BL-52	N44°39'58"W	LINE	50.40	
BL-53	N44°39'58"W	LINE	50.40	
BL-54	N44°39'58"W	LINE	50.40	
BL-55	N44°39'58"W	LINE	50.40	
BL-56	N44°39'58"W	LINE	50.40	
BL-57	N44°39'58"W	LINE	50.40	
BL-58	N44°39'58"W	LINE	50.40	
BL-59	N44°39'58"W	LINE	50.40	
BL-60	N44°39'58"W	LINE	50.40	
BL-61	N44°39'58"W	LINE	50.40	
BL-62	N44°39'58"W	LINE	50.40	
BL-63	N44°39'58"W	LINE	50.40	
BL-64	N44°39'58"W	LINE	50.40	
BL-65	N44°39'58"W	LINE	50.40	
BL-66	N44°39'58"W	LINE	50.40	
BL-67	N44°39'58"W	LINE	50.40	
BL-68	N44°39'58"W	LINE	50.40	
BL-69	N44°39'58"W	LINE	50.40	
BL-70	N44°39'58"W	LINE	50.40	
BL-71	N44°39'58"W	LINE	50.40	
BL-72	N44°39'58"W	LINE	50.40	
BL-73	N44°39'58"W	LINE	50.40	
BL-74	N44°39'58"W	LINE	50.40	
BL-75	N44°39'58"W	LINE	50.40	
BL-76	N44°39'58"W	LINE	50.40	
BL-77	N44°39'58"W	LINE	50.40	
BL-78	N44°39'58"W	LINE	50.40	
BL-79	N44°39'58"W	LINE	50.40	
BL-80	N44°39'58"W	LINE	50.40	
BL-81	N44°39'58"W	LINE	50.40	
BL-82	N44°39'58"W	LINE	50.40	
BL-83	N44°39'58"W	LINE	50.40	
BL-84	N44°39'58"W	LINE	50.40	
BL-85	N44°39'58"W	LINE	50.40	
BL-86	N44°39'58"W	LINE	50.40	
BL-87	N44°39'58"W	LINE	50.40	
BL-88	N44°39'58"W	LINE	50.40	
BL-89	N44°39'58"W	LINE	50.40	
BL-90	N44°39'58"W	LINE	50.40	
BL-91	N44°39'58"W	LINE	50.40	
BL-92	N44°39'58"W	LINE	50.40	
BL-93	N44°39'58"W	LINE	50.40	
BL-94	N44°39'58"W	LINE	50.40	
BL-95	N44°39'58"W	LINE	50.40	
BL-96	N44°39'58"W	LINE	50.40	
BL-97	N44°39'58"W	LINE	50.40	
BL-98	N44°39'58"W	LINE	50.40	
BL-99	N44°39'58"W	LINE	50.40	
BL-100	N44°39'58"W	LINE	50.40	

**TRAIL EASEMENT: TRACT L**  
(REFER TO SHEET #4)

LINE NO.	BEARING	LINE	LENGTH	DELTA ANG.
DL-1	N42°41'58"E	LINE	18.30	
DL-2	N13°44'06"E	LINE	78.43	
DL-3	N04°57'23"E	LINE	96.81	
DL-4	N02°56'01"W	LINE	72.23	
DL-5	N02°53'27"E	LINE	70.57	
DL-6	N02°53'27"E	LINE	70.57	
DL-7	N02°53'27"E	LINE	70.57	
DL-8	N02°53'27"E	LINE	70.57	
DL-9	N02°53'27"E	LINE	70.57	
DL-10	N02°53'27"E	LINE	70.57	
DL-11	N02°53'27"E	LINE	70.57	

**TRACT L STORMWATER POND**  
(REFER TO SHEET #4)

LINE NO.	BEARING	LINE	LENGTH	DELTA ANG.
EL-1	N02°02'25"W	LINE	59.04	
EL-2	N65°39'21"W	LINE	163.55	

**TRACT M STORMWATER POND**  
(REFER TO SHEET #4)

LINE NO.	BEARING	LINE	LENGTH	DELTA ANG.
FL-1	S82°13'52"E	LINE	61.50	
FL-2	S82°13'52"E	LINE	61.50	
FL-3	S82°13'52"E	LINE	61.50	
FL-4	S82°13'52"E	LINE	61.50	
FL-5	S82°13'52"E	LINE	61.50	
FL-6	S82°13'52"E	LINE	61.50	
FL-7	S82°13'52"E	LINE	61.50	
FL-8	S82°13'52"E	LINE	61.50	
FL-9	S82°13'52"E	LINE	61.50	
FL-10	S82°13'52"E	LINE	61.50	
FL-11	S82°13'52"E	LINE	61.50	
FL-12	S82°13'52"E	LINE	61.50	
FL-13	S82°13'52"E	LINE	61.50	
FL-14	S82°13'52"E	LINE	61.50	
FL-15	S82°13'52"E	LINE	61.50	
FL-16	S82°13'52"E	LINE	61.50	
FL-17	S82°13'52"E	LINE	61.50	
FL-18	S82°13'52"E	LINE	61.50	
FL-19	S82°13'52"E	LINE	61.50	
FL-20	S82°13'52"E	LINE	61.50	
FL-21	S82°13'52"E	LINE	61.50	
FL-22	S82°13'52"E	LINE	61.50	
FL-23	S82°13'52"E	LINE	61.50	
FL-24	S82°13'52"E	LINE	61.50	
FL-25	S82°13'52"E	LINE	61.50	
FL-26	S82°13'52"E	LINE	61.50	
FL-27	S82°13'52"E	LINE	61.50	
FL-28	S82°13'52"E	LINE	61.50	
FL-29	S82°13'52"E	LINE	61.50	
FL-30	S82°13'52"E	LINE	61.50	
FL-31	S82°13'52"E	LINE	61.50	
FL-32	S82°13'52"E	LINE	61.50	
FL-33	S82°13'52"E	LINE	61.50	
FL-34	S82°13'52"E	LINE	61.50	
FL-35	S82°13'52"E	LINE	61.50	
FL-36	S82°13'52"E	LINE	61.50	
FL-37	S82°13'52"E	LINE	61.50	
FL-38	S82°13'52"E	LINE	61.50	
FL-39	S82°13'52"E	LINE	61.50	
FL-40	S82°13'52"E	LINE	61.50	
FL-41	S82°13'52"E	LINE	61.50	
FL-42	S82°13'52"E	LINE	61.50	
FL-43	S82°13'52"E	LINE	61.50	
FL-44	S82°13'52"E	LINE	61.50	
FL-45	S82°13'52"E	LINE	61.50	
FL-46	S82°13'52"E	LINE	61.50	
FL-47	S82°13'52"E	LINE	61.50	
FL-48	S82°13'52"E	LINE	61.50	
FL-49	S82°13'52"E	LINE	61.50	
FL-50	S82°13'52"E	LINE	61.50	
FL-51	S82°13'52"E	LINE	61.50	
FL-52	S82°13'52"E	LINE	61.50	
FL-53	S82°13'52"E	LINE	61.50	
FL-54	S82°13'52"E	LINE	61.50	
FL-55	S82°13'52"E	LINE	61.50	
FL-56	S82°13'52"E	LINE	61.50	
FL-57	S82°13'52"E	LINE	61.50	
FL-58	S82°13'52"E	LINE	61.50	
FL-59	S82°13'52"E	LINE	61.50	
FL-60	S82°13'52"E	LINE	61.50	
FL-61	S82°13'52"E	LINE	61.50	
FL-62	S82°13'52"E	LINE	61.50	
FL-63	S82°13'52"E	LINE	61.50	
FL-64	S82°13'52"E	LINE	61.50	
FL-65	S82°13'52"E	LINE	61.50	
FL-66	S82°13'52"E	LINE	61.50	
FL-67	S82°13'52"E	LINE	61.50	
FL-68	S82°13'52"E	LINE	61.50	
FL-69	S82°13'52"E	LINE	61.50	
FL-70	S82°13'52"E	LINE	61.50	
FL-71	S82°13'52"E	LINE	61.50	
FL-72	S82°13'52"E	LINE	61.50	
FL-73	S82°13'52"E	LINE	61.50	
FL-74	S82°13'52"E	LINE	61.50	
FL-75	S82°13'52"E	LINE	61.50	
FL-76	S82°13'52"E	LINE	61.50	
FL-77	S82°13'52"E	LINE	61.50	
FL-78	S82°13'52"E			