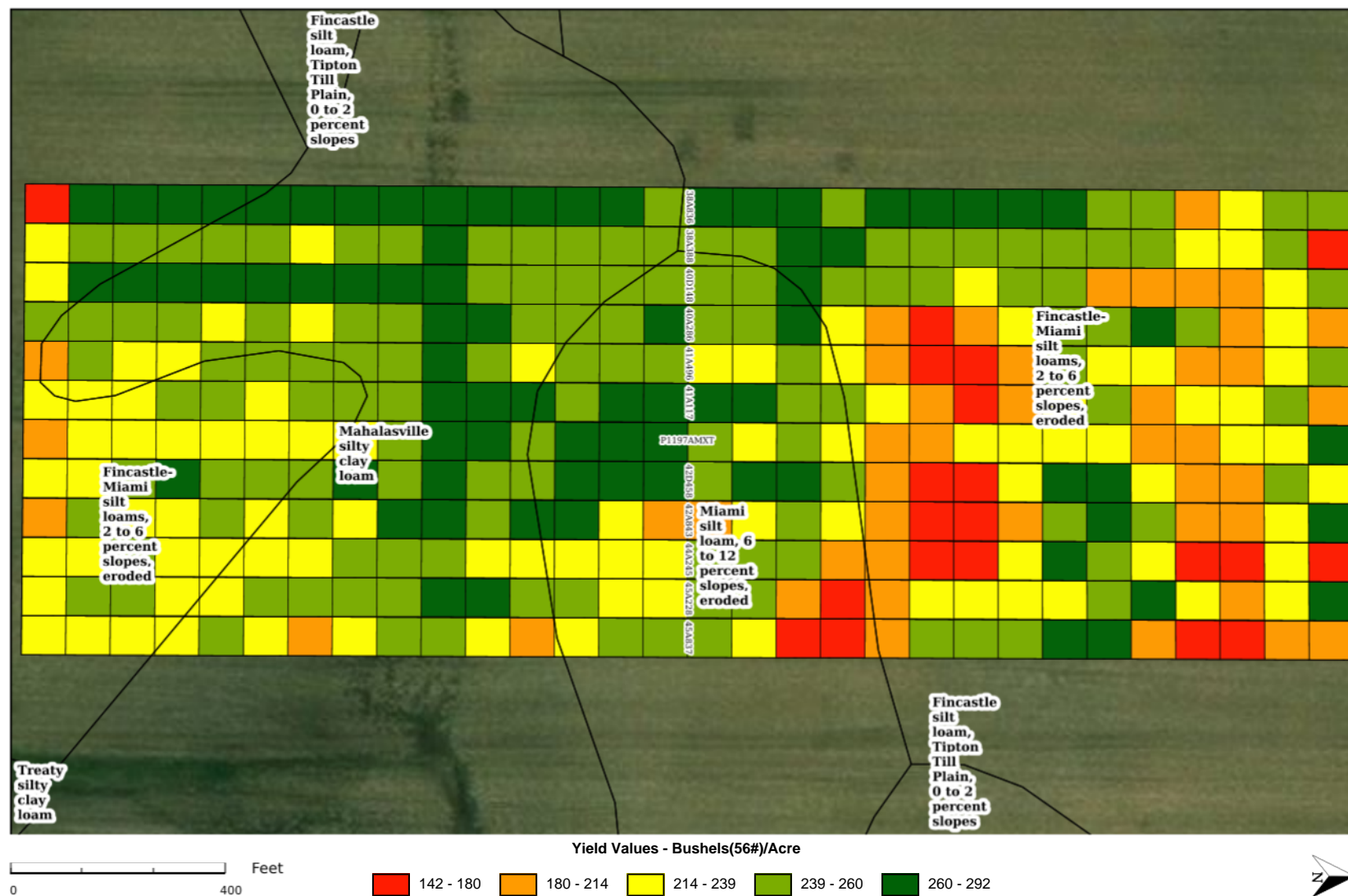


2018 Corn Individual Trial Report

Cooperator: JOHN HUDSON
 Trial County: Montgomery, Indiana
 Trial Name: US35 L5Q CG FTN 879554483818122
 Report Created: Oct 22, 2018

Trial Type: FTN
 Planting Date: Apr 29, 2018
 Harvest Date: Oct 15, 2018
 Planting Rate: 36,195 Seeds/Acre

Previous Crop: Soybeans
 Tillage Type: Minimum
 Irrigation: No
 Row Width: 30 Inches



2018 Corn Individual Trial Report

Cooperator: **JOHN HUDSON**
 Trial County: **Montgomery, Indiana**
 Trial Name: **US35 L5Q CG FTN 879554483818122**
 Report Created: **Oct 22, 2018**

Trial Type: **FTN**
 Planting Date: **Apr 29, 2018**
 Harvest Date: **Oct 15, 2018**
 Planting Rate: **36,195 Seeds/Acre**

Previous Crop: **Soybeans**
 Tillage Type: **Minimum**
 Irrigation: **No**
 Row Width: **30 Inches**

Legend

Soils (Columns in descending order by area)

- ¹Fincastle — Fincastle-Miami silt loams, 2 to 6 percent slopes, eroded
²Mahalasville — Mahalasville silty clay loam

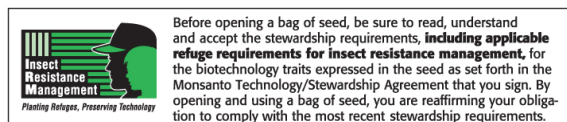
Product Information					Plot Level Data			Yield By Soil	
Plot #	Seed Brand	Product Name	Traits	RM	Yield Rank	Yield	Moisture	Fincastle ¹	Mahalasville ²
1	SPECIALTY HYBRIDS	38A836 BRAND BLEND	SSRIB	108	1	260.0	15.9	254.6	270.7
2	SPECIALTY HYBRIDS	38A388 BRAND BLEND	SSRIB	108	3	246.4	16.0	245.1	248.3
3	SPECIALTY HYBRIDS	40D148 BRAND BLEND	VT2PRIB	110	2	248.4	15.7	233.2	266.2
4	SPECIALTY HYBRIDS	40A286 BRAND BLEND	SSRIB	110	6	236.9	16.3	220.0	248.8
5	SPECIALTY HYBRIDS	41A496 BRAND BLEND	SSRIB	111	10	228.4	16.5	216.2	238.5
6	SPECIALTY HYBRIDS	41A117 BRAND BLEND	SSRIB	111	5	240.0	16.5	227.3	
7	PIONEER	P1197AMXT		0	8	234.9	15.5	222.9	
8	SPECIALTY HYBRIDS	42D458 BRAND BLEND	VT2PRIB	112	4	244.0	16.0	227.9	
9	SPECIALTY HYBRIDS	42A843 BRAND BLEND	SSRIB	113	9	231.5	17.0	220.9	
10	SPECIALTY HYBRIDS	44A245 BRAND BLEND	SSRIB	112	11	223.1	16.7	211.9	
11	SPECIALTY HYBRIDS	45A228 BRAND BLEND	SSRIB	115	6	236.9	17.9	235.3	
12	SPECIALTY HYBRIDS	45A837 BRAND BLEND	SSRIB	114	12	222.2	16.8	219.5	231.1
Field Average						237.7	16.4	228.8	251.5

Entries with less than 295 feet of row length are not listed for the Yield by Soil results, but are included in the plot averages. All yield values are in bu/acre and are adjusted to 15.0% moisture. Green highlight designates the top five yield values per soil type. Report includes top four soils based on acreage.

SPECIALTY® Corn Legend

VALUE ADDED TRAITS:

- Conv** = Conventional
- RR2** = Roundup Ready® Corn 2
- SS** = SmartStax® corn
- SSRIB** = SmartStax® RIB Complete® corn blend
- VT2P** = VT Double PRO® corn
- VT2PRIB** = VT Double PRO® RIB Complete® corn blend
- VT3P** = Genuity® VT Triple PRO® corn
- VT3PRIB** = Genuity® VT Triple PRO® RIB Complete® corn blend
- DGVT2P** = DroughtGard® Hybrids with VT Double PRO® corn
- DGVT2PRIB** = DroughtGard® Hybrids with VT Double PRO® RIB Complete® corn blend
- DGVT3P** = DroughtGard® Hybrids with Genuity® VT Triple PRO® corn
- DGVT3PRIB** = DroughtGard® Hybrids with Genuity® VT Triple PRO® RIB Complete® corn blend



Monsanto Company is a member of Excellence Through Stewardship® (ETS). Monsanto products are commercialized in accordance with ETS Product Launch Stewardship Guidance, and in compliance with Monsanto's Policy for Commercialization of Biotechnology-Derived Plant Products in Commodity Crops. This product has been approved for import into key export markets with functioning regulatory systems. Any crop or material produced from this product can only be exported to, or used, processed or sold in countries where all necessary regulatory approvals have been granted. It is a violation of national and international law to move material containing biotech traits across boundaries into nations where import is not permitted. Growers should talk to their grain handler or product purchaser to confirm their buying position for this product. Excellence Through Stewardship® is a registered trademark of Excellence Through Stewardship.

B.t. products may not yet be registered in all states. Check with your Monsanto representative for the registration status in your state.

IMPORTANT IRM INFORMATION: RIB Complete® corn blend products do not require the planting of a structured refuge **except** in the Cotton-Growing Area where corn earworm is a significant pest. SmartStax® RIB Complete® corn blend is not allowed to be sold for planting in the Cotton-Growing Area. **See the IRM/Grower Guide for additional information. Always read and follow IRM requirements.**

Individual results may vary, and performance may vary from location to location and from year to year. This result may not be an indicator of results you may obtain as local growing, soil and weather conditions may vary. Growers should evaluate data from multiple locations and years whenever possible.

ALWAYS READ AND FOLLOW PESTICIDE LABEL DIRECTIONS. Roundup Ready technology contains genes that confer tolerance to glyphosate, an active ingredient in Roundup® brand agricultural herbicides. Agricultural herbicides containing glyphosate will kill crops that are not tolerant to glyphosate. DroughtGard®, Genuity Design®, Genuity®, RIB Complete®, Roundup Ready®, Roundup®, SmartStax®, VT Double PRO® and VT Triple PRO® are trademarks of Monsanto Technology LLC. LibertyLink® and the Water Droplet Design® is a registered trademark of Bayer. Herculex® is a registered trademark of Dow AgroSciences LLC. Respect the Refuge and Corn Design® and Respect the Refuge® are registered trademarks of National Corn Growers Association. All other trademarks are the property of their respective owners.

©2017 Monsanto Company.

Specialty and Design® and Your Field, Our Specialty® are registered trademarks of American Seeds, LLC.