

Coordinating Committee Update

CVFPP State Systemwide Investment Approach Refinements

September 28, 2016

Presented by:

Eric Tsai, P.E.

Eric.Tsai@water.ca.gov



Today's Discussion

Where We've Been

- 2012 CVFPP State Systemwide Investment Approach

Where We Are

- CVFPP State Systemwide Investment Approach Refinements

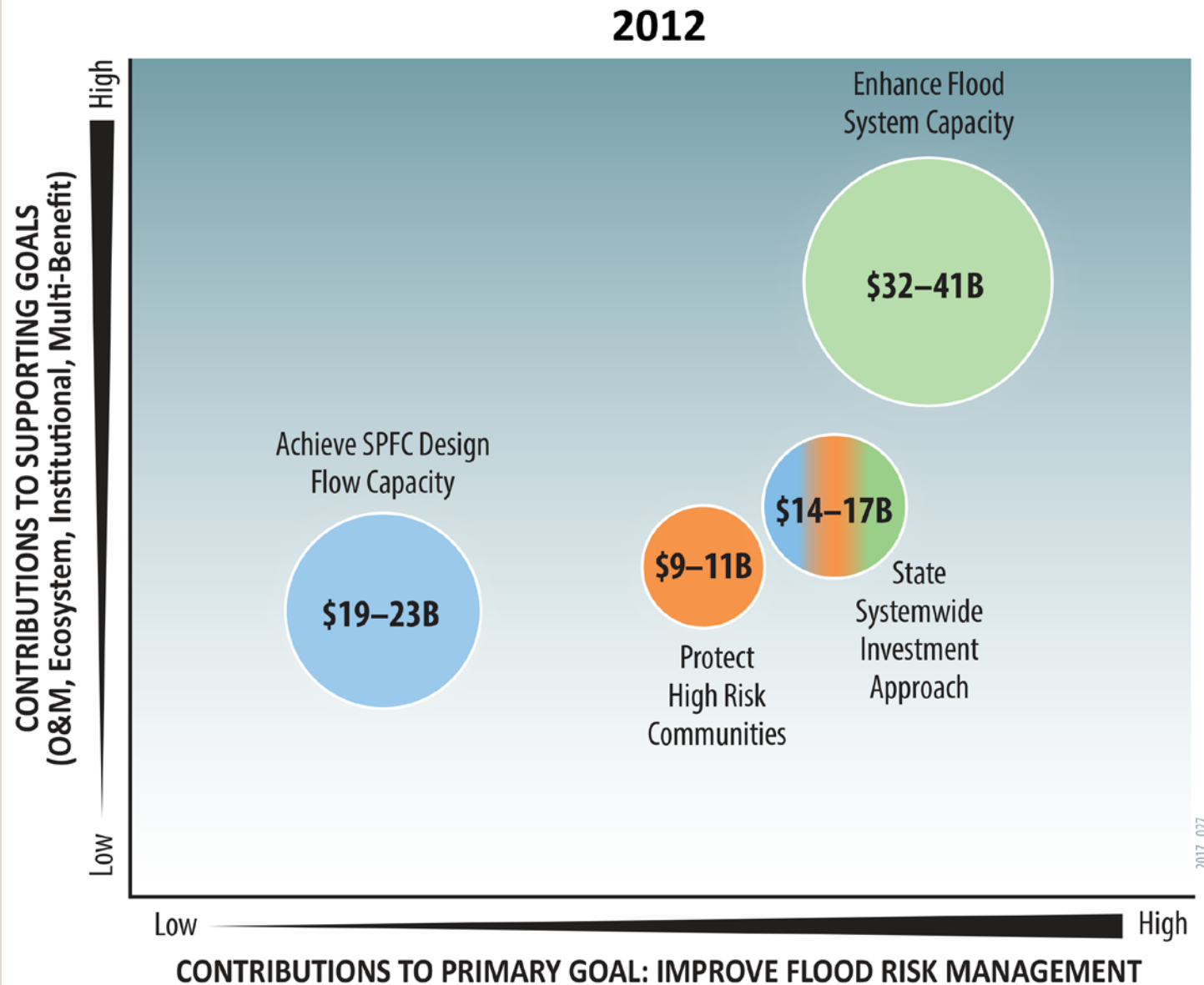
Where We're Going

- Draft Flood Policy Issues

Where We've Been

2012 CVFPP State Systemwide Investment Approach

2012 CVFPP State Systemwide Investment Approach



Physical and Operational Elements in SSIA

Table 3-2 Major Physical and Operational Elements of Preliminary Approaches and State Systemwide Investment Approach, 2012 CVFPP

FLOOD MANAGEMENT ELEMENT	PROJECT LOCATION OR REQUIRED COMPONENTS	ACHIEVE SPFC DESIGN FLOW CAPACITY	PROTECT HIGH RISK COMMUNITIES	ENHANCE FLOOD SYSTEM CAPACITY		STATE SYSTEMWIDE INVESTMENT APPROACH
Urban Improvements						
Target 200-Year Level of Protection	Selected projects developed by local agencies, State, federal partners		YES	YES	→	YES
Target SPFC Design Capacity	Urban Levee Evaluations Project results	YES ²				

- Systemwide
- Urban
- Rural
- Small Community

Where We Are

CVFPP State Systemwide Investment Approach Refinements



Contribution of Areas of Interest toward CVFPP Goals in 2017 Refined SSIA Portfolio

CVFPP GOALS	Systemwide	Urban	Rural	Small Communities	Refined SSIA Portfolio
Primary Goal: Improve flood risk management					
Reduce the chance of flooding					
Reduce damages once flooding occurs					
Improve public safety, preparedness, and emergency response					
Supporting Goals					
Improve Operations and Maintenance					
Promote Ecosystem Functions					
Promote Multi-benefit Projects					
Improve Institutional Support					

2017_083

AREA OF INTEREST CONTRIBUTION LEVEL

- High potential contribution to this goal
- Moderate to high potential contribution to this goal
- Moderate potential contribution to this goal
- Low potential contribution to this goal
- No potential contribution to this goal

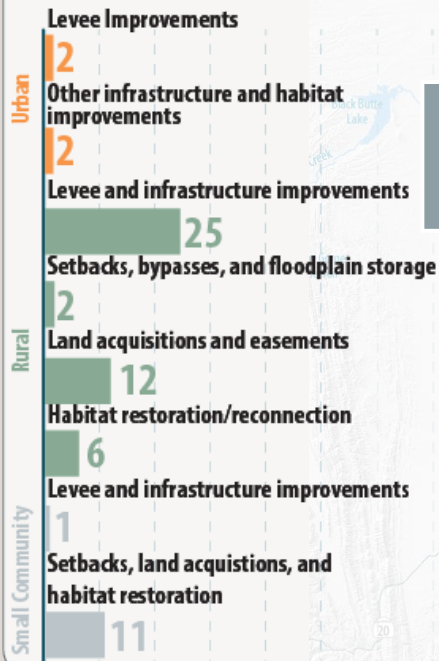
DRAFT

2017 Refinements to SSIA

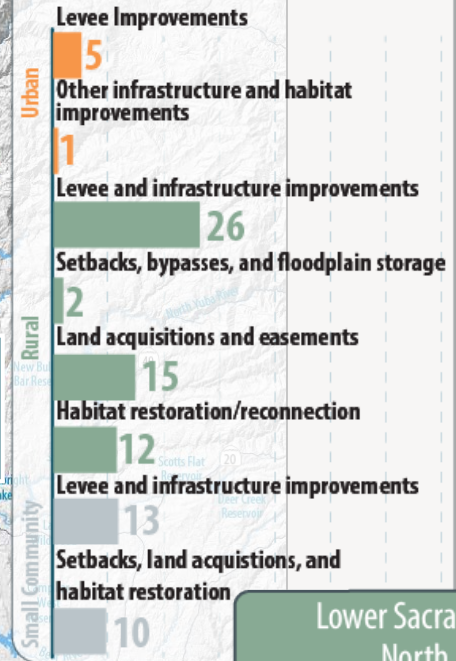
2012 SSIA		2017 SSIA Refinements	
Flood Management Element	Project Location or Required Components	Management Action Categories Used in 2017 CVFPP	Summary of Refinements in 2017 CVFPP Update
<i>Urban: Capital Improvements</i>			
Target 200-year Level of Protection	Selected projects developed by local agencies, State, federal partners		Potential urban improvements updated
Non-SPFC Urban Levee Improvements	Includes approximately 120 miles of non-SPFC levees that are closely associated with SPFC urban levees. Performance of these non-SPFC levees may affect the performance of SPFC levees	Levee Improvements; Other Infrastructure Improvements	considering implementation progress for State-federal projects during last 5 years and recommendations of RFMPs

Table 3-3 Refinements to Physical and Operational Elements in the State Systemwide Investment Approach, 2017 Update to the CVFPP

Mid Upper Sacramento Region



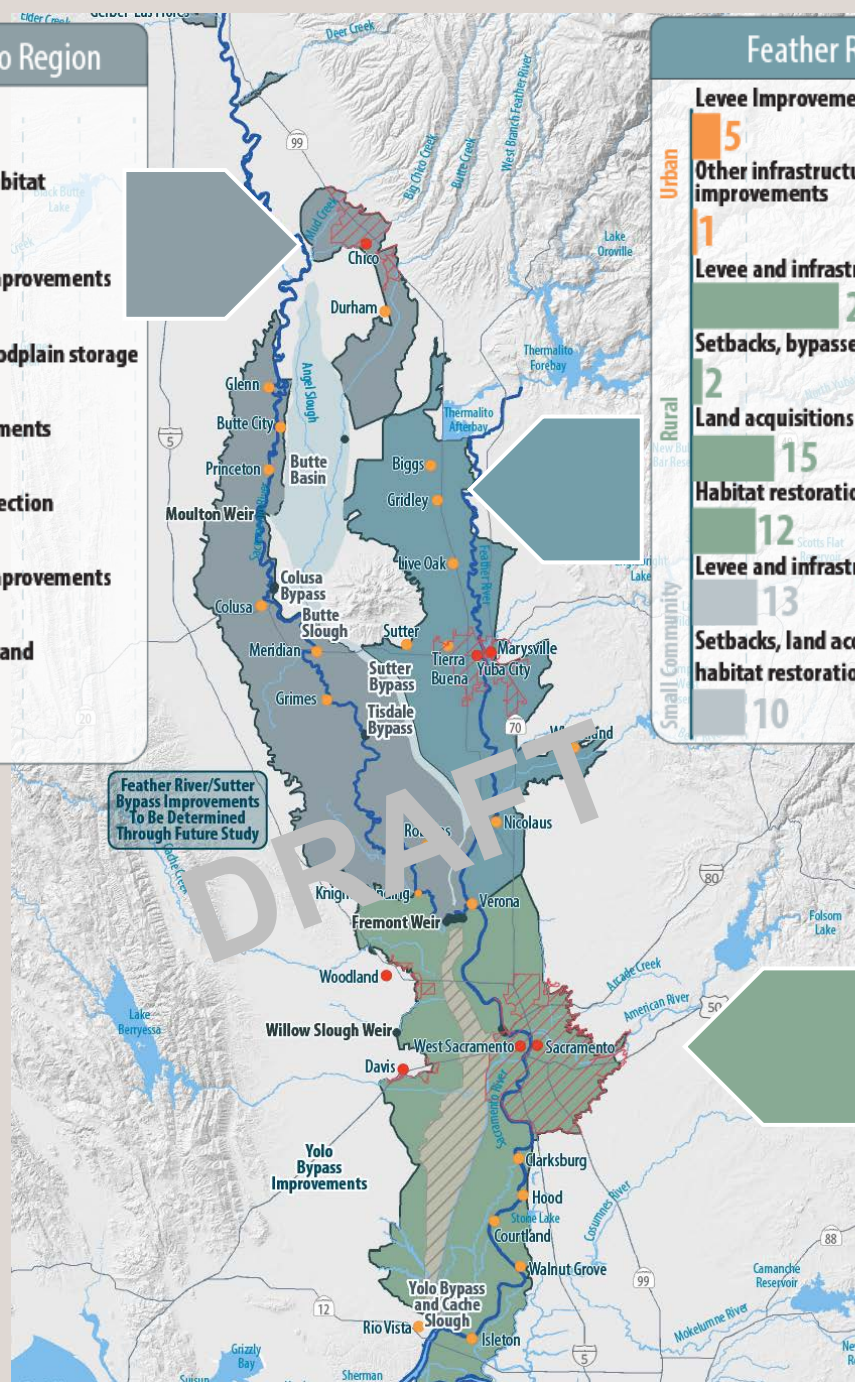
Feather River Region



Lower Sacramento Delta North Region

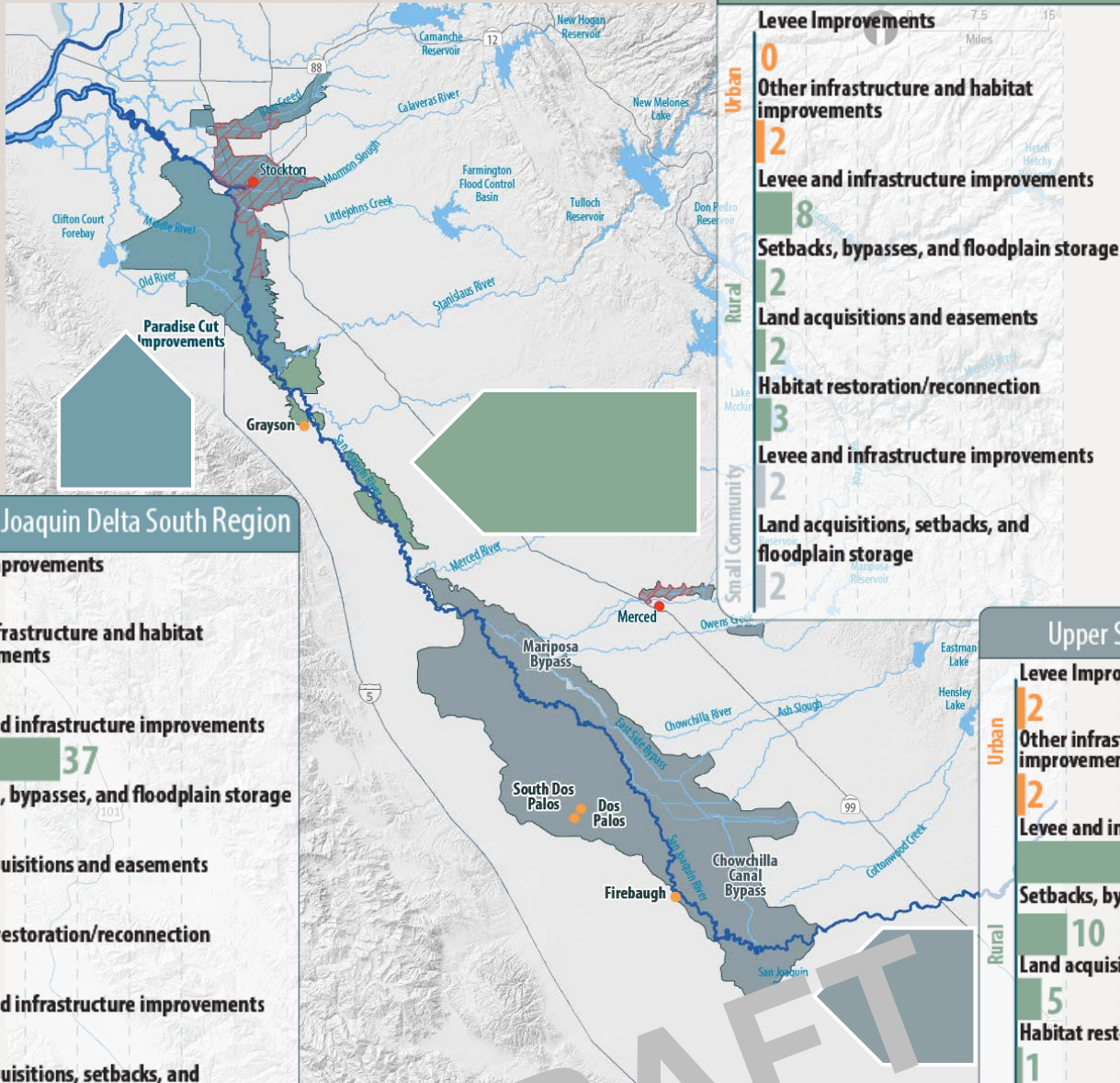


Sacramento River Basin Refined 2017 SSIA Portfolio

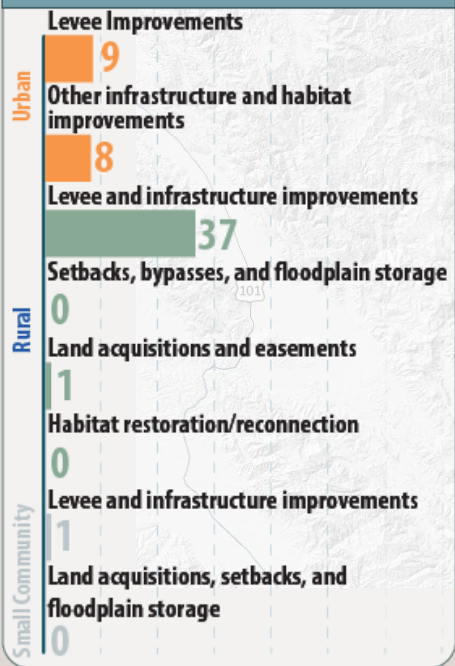


Feather River/Sutter Bypass Improvements To Be Determined Through Future Study

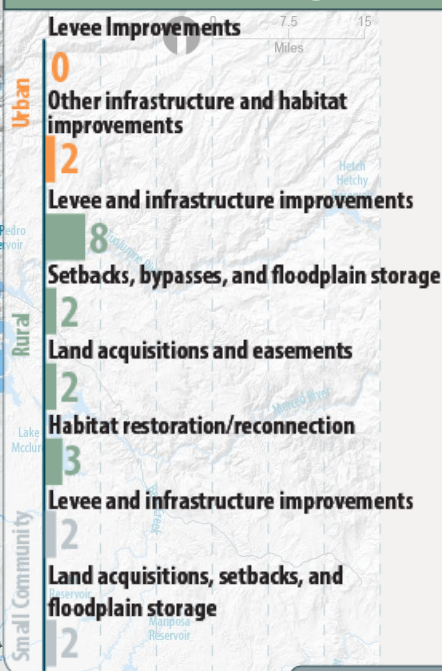
San Joaquin River Basin Refined 2017 SSIA Portfolio



Lower San Joaquin Delta South Region



Mid San Joaquin Region

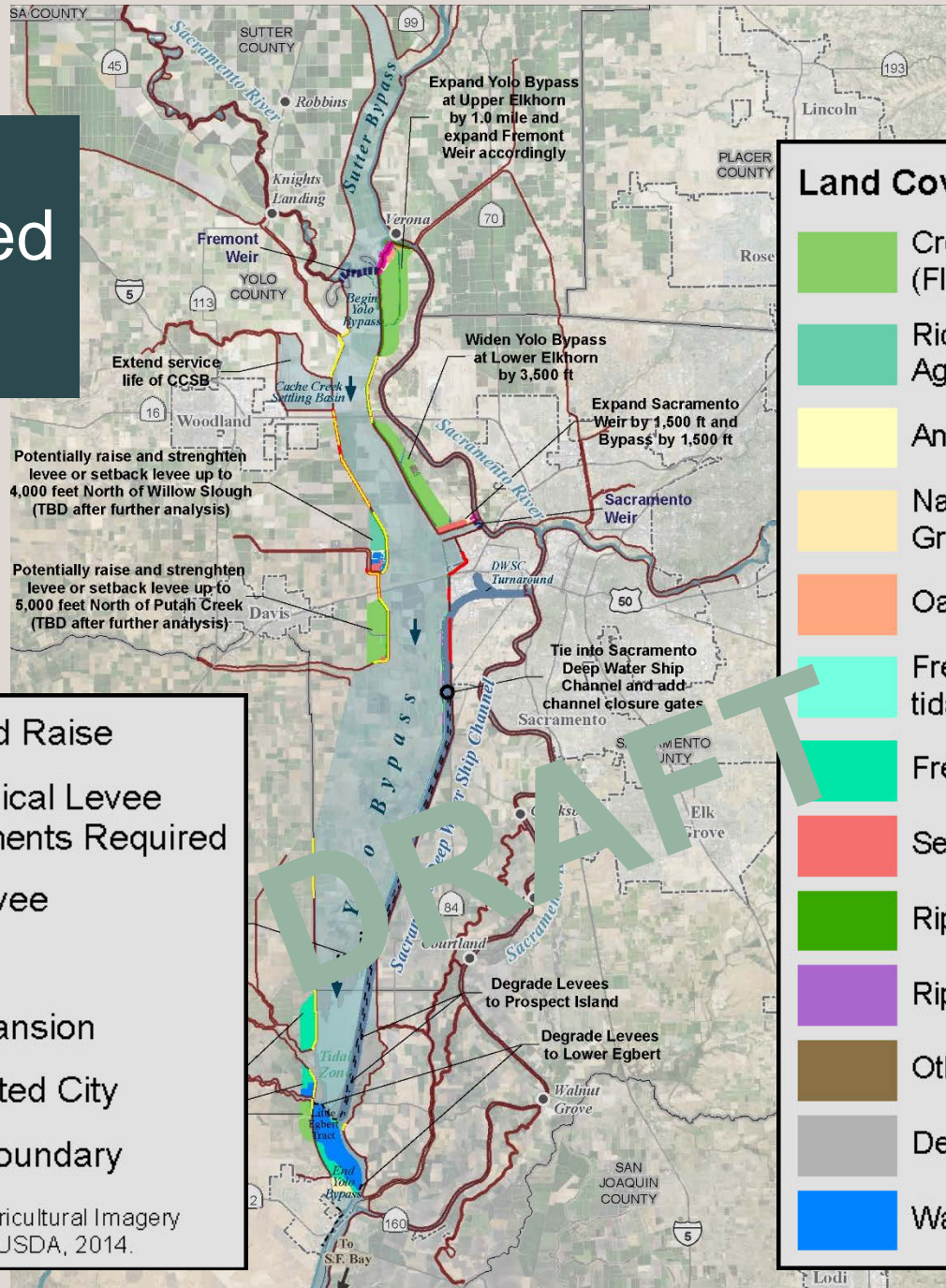


Upper San Joaquin Region



DRAFT

Yolo Bypass Recommended Option



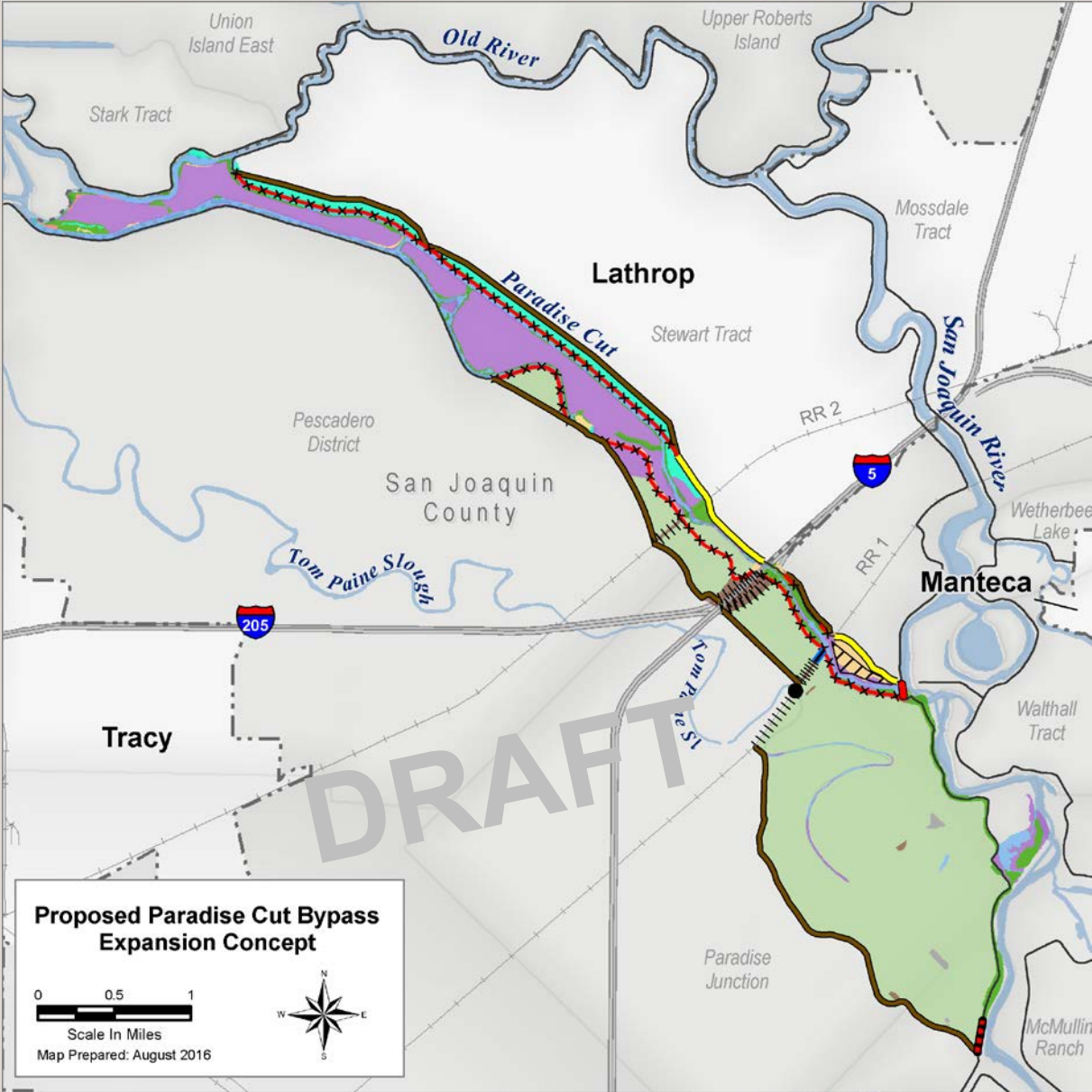
- Freeboard Raise
- Geotechnical Levee Improvements Required
- SPFC Levee
- Weir
- Weir Expansion
- Incorporated City
- County Boundary

Aerial photo, National Agricultural Imagery Program (NAIP), AFPO, USDA, 2014.

Land Cover

- Cropland and Pasture (Floodplain Agriculture)
- Rice (Floodplain Agriculture)
- Annual Grassland
- Native Perennial Grassland
- Oak Savannah
- Freshwater Marsh (non-tidal)
- Freshwater Marsh (tidal)
- Seasonal Wetland
- Riparian Forest
- Riparian Scrub
- Other Natural
- Developed
- Water

Proposed Paradise Cut Expansion



Where We're Going

Draft Flood Policy Issues

Draft Flood Policy Issues



Land Use & Floodplain Management

Ongoing and planned development in the floodplain continues to intensify flood risk.



Residual Risk Management

Flood risk can be reduced, not eliminated, but commitment to enhanced resilience and public awareness falls short in many areas.



Hydraulic and Ecosystem Baselines and Program Phasing

Current law precludes crediting the benefits of improvements made early in a long-term program to offset impacts that may occur later in the program, jeopardizing phased implementation of CVFPP structural improvements.



Operations and Maintenance of the Flood System

Underfunding and complex, time-consuming permits lead to a backlog of deferred maintenance and greater risk to life and property.

Draft Flood Policy Issues



Multi-Benefit Projects

Ineffectual institutional frameworks have hindered implementation of multi-benefit actions.



Governance & Institutional Support

Overlapping authorities and conflicting mandates that occur can complicate flood system improvements and maintenance and is partially the result of existing governance structures which are inadequate to support the broad range of actions included in the CVFPP.



Coordination with Federal Agencies

Federal agencies share responsibility for flood management, but complicated coordination, policies, funding, and approvals slow progress.



Finance

Insufficient and unstable flood management funding has led to delayed investment and greater risk to life and property.

Coordinating Committee Update

CVFPP State Systemwide Investment Approach Refinements

September 28, 2016

Presented by:

Eric Tsai, P.E.

Eric.Tsai@water.ca.gov

