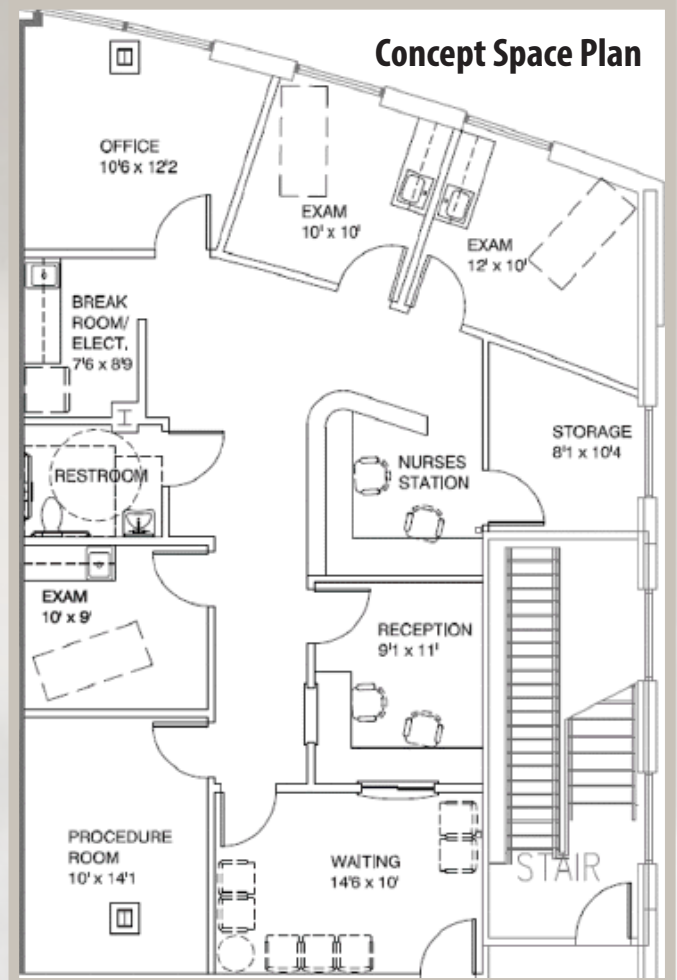
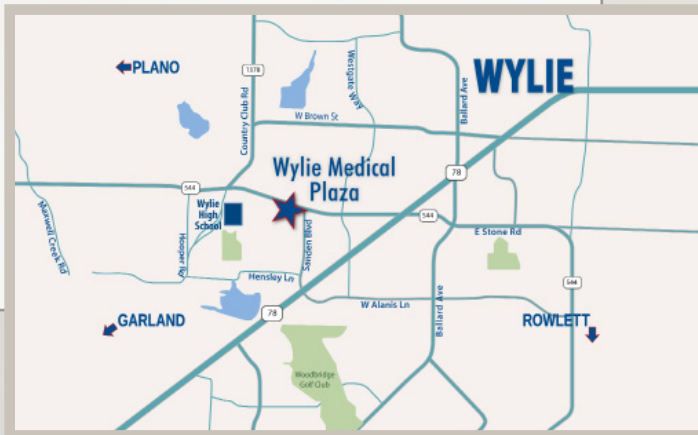




Suite 290 Highlights

- 1,624 RSF
- Shell Condition
- NNN/ Rate and T.I. Allowance Available
- Suite Can Be Built Out and Move In Ready in 3 Months
- Experienced Project Management Team to Oversee All Aspects of the Design/ Build Process



FOR LEASING INFORMATION, CONTACT:

PAM PERKINS

(972) 421-3310

pam.perkins@madisonmarquette.com