

DEPARTMENT 3 -- BEEF CATTLE

Superintendent: Colleen McClain 887-8769 Jeffrey Larson

1. Joint ownership considered to be as one owner in accordance with registration papers.
2. Number of animals in any class to be entered by any one exhibitor shall be determined by Fair management.
3. When on exhibit in the ring, each animal must be under halter and in charge of owner or owner's representative.
4. All beef animals are asked to arrive between 9:00 a.m. and 12:00 p.m. Sunday and Monday.
5. Exhibitors will be expected to display or parade their animals as directed by the Superintendent to accept the stall assigned without controversy, to keep their animals in an attractive appearance, and to cooperate with the department in every way that may serve to increase the educational value of the show.

Section 1 -- Breed Beef Cattle *Horned or Polled Competing

ID No.	100 Angus	200 Charolais	300 Hereford*	400 Simmental	500 Shorthorn	600 Other
	Class Description					
1.	Bull Calf (current year)		\$18	\$16	\$12	\$8
2	Yearling Bull		\$18	\$16	\$12	\$8

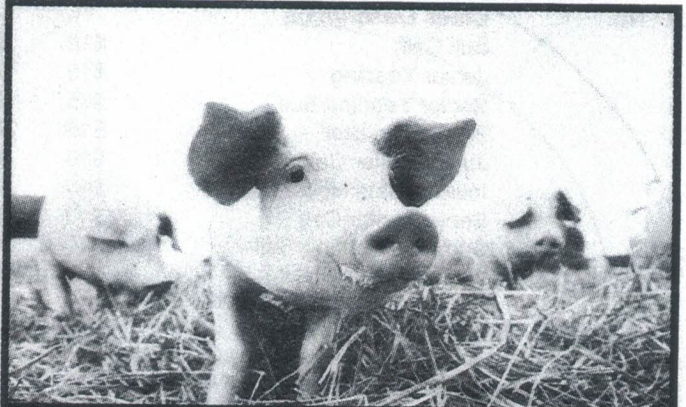


Coordinated Care, Close to Home

Call 814-274-9300.

We accept most major insurance plans including Geisinger Health Plan, Highmark, UPMC Health Plan, and more.

UPMC | COLE



Ask about our Livestock CD today!



McKean County Offices
12 Chambers Street, Bradford
1001 East Main Street, Bradford
87 Fraley Street, Kane
www.CNBBank.bank

Ask us for more details on our
Livestock Certificate of Deposit.

Member FDIC

FAIRS *feature* AGRICULTURE

Canfield's Outdoor Power Equipment

Family Owned
and Operated
since 1980



Husqvarna

Equipment Sales Service

"If it has a spark
plug in it,
We'll work on it!!"

2932 Kings Run Rd. Ceres, PA
814-697-6233
www.canfieldsooutdoor.com

Section 1 -- Breed Beef Cattle *Horned or Polled Competing

Superintendent: Colleen McClain 887-8769 Jeffrey Larson 598-4531

100 Angus 200 Charolais 300 Hereford* 400 Simmental 500 Shorthorn 600 Other

ID No.	Class Description					
3	Two Year Old Bull	\$20	\$15	\$12	\$10	\$5
4	Two Bulls owned by same exhibitor	\$20	\$15	\$12	\$10	\$5
5	Heifer Calf (current year)	\$18	\$15	\$12	\$8	\$6
6	Yearling Heifer	\$18	\$15	\$12	\$8	\$6
7	Two Year Old Heifer	\$20	\$15	\$12	\$10	\$5
8	Female 3 Years -- Over	\$20	\$15	\$12	\$10	\$5
9	Cow and Calf	\$20	\$15	\$12	\$10	\$5
10	Get of Sire*	\$20	\$15	\$12	\$10	\$5
11	Junior Get of Sire**	\$20	\$15	\$12	\$10	\$5

*Four animals from above classes, both sexes represented, need not be owned by the same exhibitor.

**Three animals, both sexes represented, from classes, 1, 2, 3, 10, 11, 12, 13, 14, or 15.

Need not be owned by exhibitor.

Section 2 -- Open Class Steers, Market Steers *Horned or Polled Competing

100 Angus 200 Charolais 300 Hereford* 400 Simmental 500 Shorthorn

ID No.	Class Description				
1	Light Weight	\$20	\$16	\$14	\$12
2	Medium Weight	\$20	\$16	\$14	\$12
3	Heavy Weight	\$20	\$16	\$14	\$12

Section 3 -- Feeder Class, Individual, Horned or Polled Competition

ID No.	Class Description				
1	Steers 300-500 lbs.	\$14	\$13	\$12	\$11
2	Steers 501-700 lbs.	\$14	\$13	\$12	\$11
3	Steers 701-999 lbs.	\$14	\$13	\$12	\$11
4	Heifers 300-400 lbs.	\$14	\$13	\$12	\$11
5	Heifers 401-600 lbs.	\$14	\$13	\$12	\$11
6	Heifers 601-800 lbs.	\$14	\$13	\$12	\$11

Section 4 -- Beef Good Housekeeping

ID No.	Class Description	ID No.	Class Description
1	Beef Good Housekeeping Tuesday	4	Beef Good Housekeeping Friday
2	Beef Good Housekeeping Wednesday	5	Beef Good Housekeeping Saturday
3	Beef Good Housekeeping Thursday	6	Beef Good Housekeeping Cumulative

DEPARTMENT 4 -- SHEEP

Superintendent: Ray Kleisath 887-9913

See Health Requirements

1. To qualify, all animals must be free of any evidence of infectious or contagious disease.

Superintendent identification -- Purebred animals must be identified by registry name and number, corresponding to the ear tag or tattoo number. Grade animals must be identified by farm-flock number, corresponding to the ear tag or tattoo number.