



Want to help with or sponsor the 2017 GCC here at Wild Horse? Contact director at lvdgc@cox.net



Course INNOVA – Afternoon tee times available after 3 PM.

Tee times available up to 3 days in advance.

Call Wild Horse Golf Shop at 702-434-9000 ext. #1.

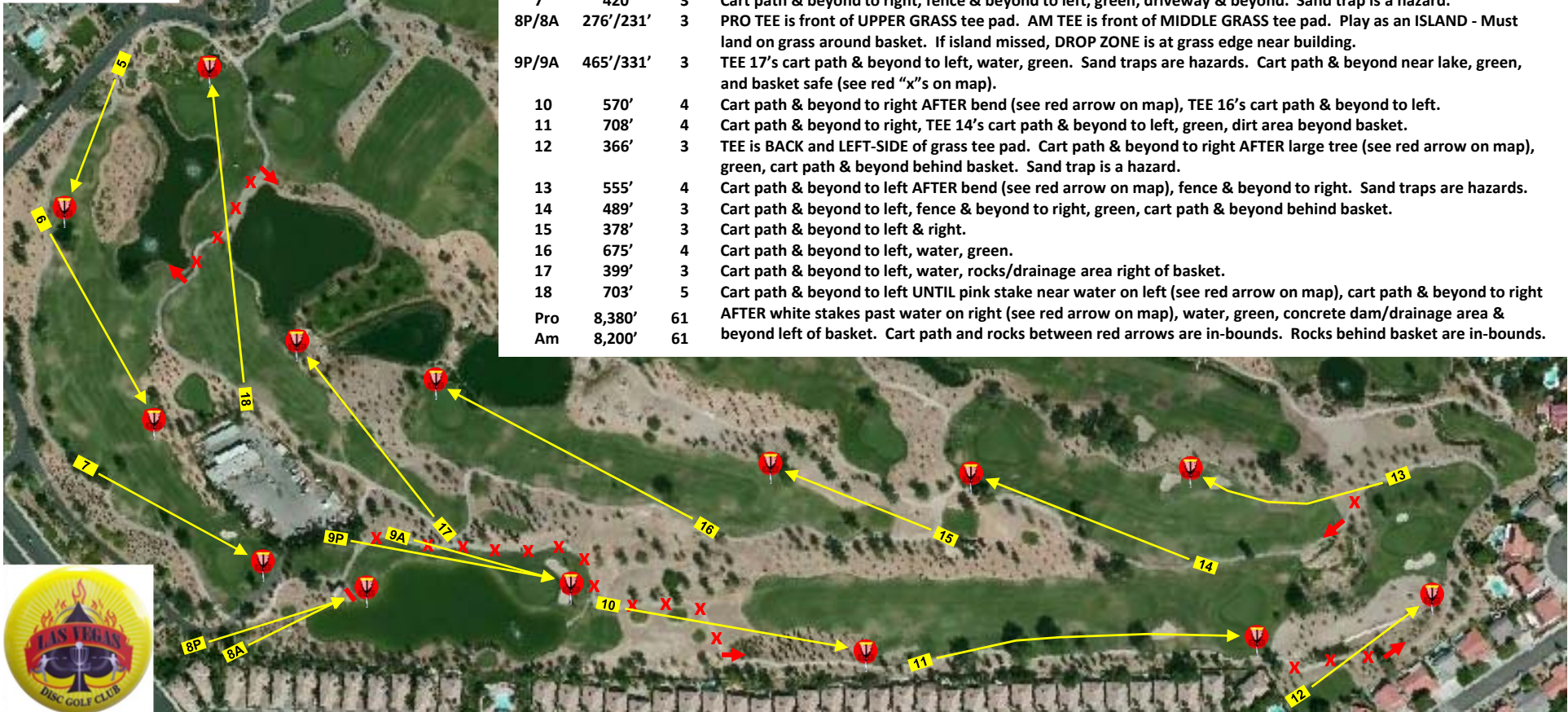
Identify reservation as “Disc Golf.” \$10 fee includes cart!

Dress code enforced. Outside food & beverages prohibited.



Two meter rule is in effect. Sand traps are a hazard: Take one-stroke penalty and play it where it lies; No relief from sand traps. All tee pads are on a cart path except Holes 8P, 8A, & 12. All cart paths are O.B. except: Hole 9 around lake (see red “x”s); Hole 10 left of red arrow on map (see red “x”s); Hole 12 left of red arrow on map (see red “x”s); Hole 13 right of red arrow on map (see red “x”s); & Hole 18 between red arrows on map (see red “x”s).

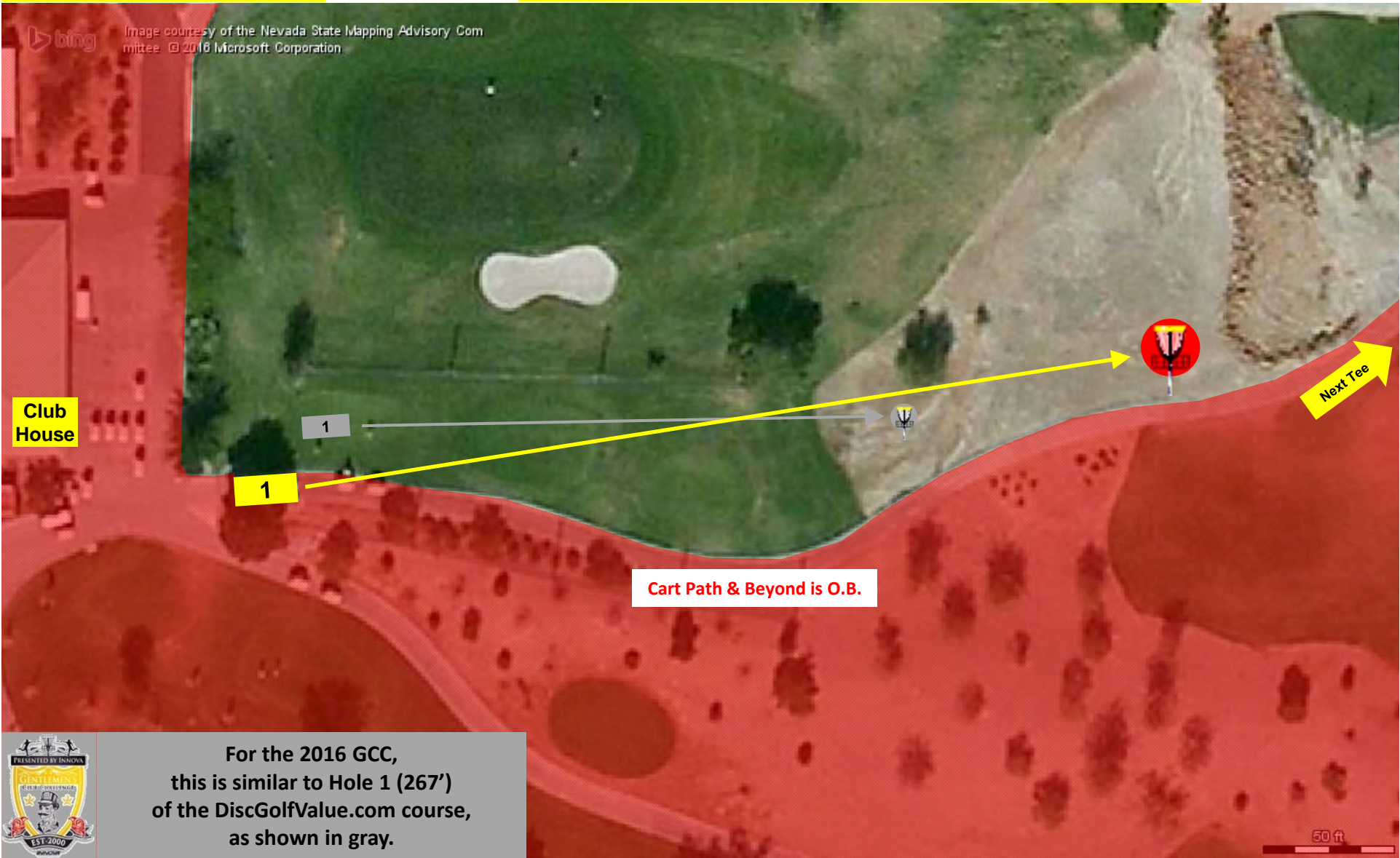
Hole	Dist.	Par	Out of Bounds, Hazards, & Clarifications
1	336'	3	Cart path & beyond to right. Rocks behind basket are in-bounds.
2	495'	3	Cart path & beyond to left, green, fence & beyond behind basket. Sand trap is a hazard.
3	213'	3	Cart path & beyond right & left, tall green fence adjacent & beyond to right.
4	564'	4	Cart path & beyond to right, green, cart path & beyond behind basket. Sand trap is a hazard.
5	342'	3	Cart path & beyond to right, water.
6	426'	3	Cart path & beyond to right, green area left of basket, cart path & beyond to left near green.
7	420'	3	Cart path & beyond to right, fence & beyond to left, green, driveway & beyond. Sand trap is a hazard.
8P/8A	276'/231'	3	PRO TEE is front of UPPER GRASS tee pad. AM TEE is front of MIDDLE GRASS tee pad. Play as an ISLAND - Must land on grass around basket. If island missed, DROP ZONE is at grass edge near building.
9P/9A	465'/331'	3	TEE 17's cart path & beyond to left, water, green. Sand traps are hazards. Cart path & beyond near lake, green, and basket safe (see red “x”s on map).
10	570'	4	Cart path & beyond to right AFTER bend (see red arrow on map), TEE 16's cart path & beyond to left.
11	708'	4	Cart path & beyond to right, TEE 14's cart path & beyond to left, green, dirt area beyond basket.
12	366'	3	TEE is BACK and LEFT-SIDE of grass tee pad. Cart path & beyond to right AFTER large tree (see red arrow on map), green, cart path & beyond behind basket. Sand trap is a hazard.
13	555'	4	Cart path & beyond to left AFTER bend (see red arrow on map), fence & beyond to right. Sand traps are hazards.
14	489'	3	Cart path & beyond to left, fence & beyond to right, green, cart path & beyond behind basket.
15	378'	3	Cart path & beyond to left & right.
16	675'	4	Cart path & beyond to left, water, green.
17	399'	3	Cart path & beyond to left, water, rocks/drainage area right of basket.
18	703'	5	Cart path & beyond to left UNTIL pink stake near water on left (see red arrow on map), cart path & beyond to right AFTER white stakes past water on right (see red arrow on map), water, green, concrete dam/drainage area & beyond left of basket. Cart path and rocks between red arrows are in-bounds. Rocks behind basket are in-bounds.
Pro	8,380'	61	
Am	8,200'	61	



Hole 1
Distance - 336' Par 3
INNOVA
DISC GOLF



INNOVA
DISC GOLF
\$1,350
from
commission
sales

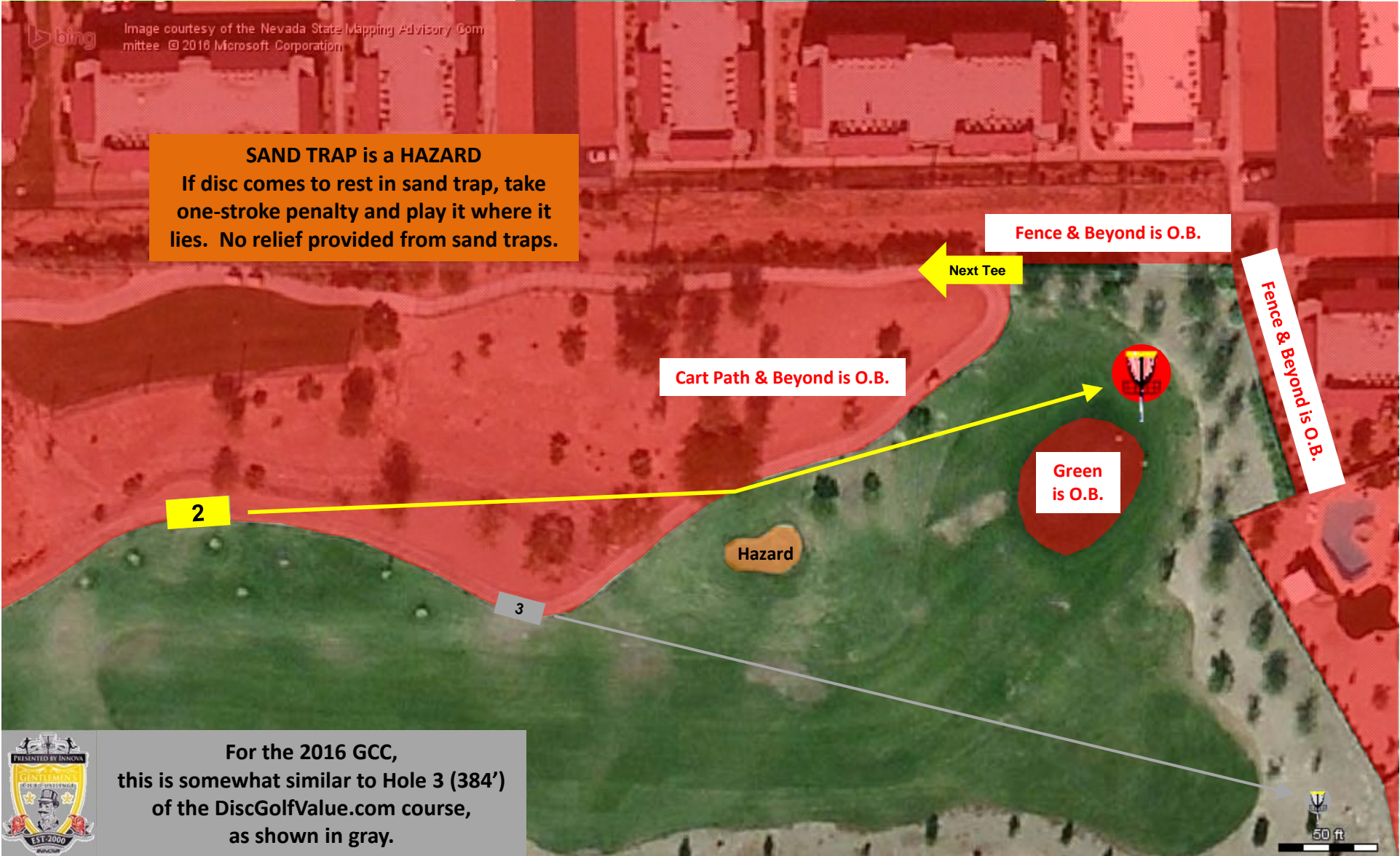


For the 2016 GCC,
this is similar to Hole 1 (267')
of the DiscGolfValue.com course,
as shown in gray.

Hole 2
 Distance - 495' Par 3
INNOVA
 DISC GOLF



\$1,725
 from 575
 decks of
 playing
 cards



SAND TRAP is a HAZARD
 If disc comes to rest in sand trap, take one-stroke penalty and play it where it lies. No relief provided from sand traps.

Fence & Beyond is O.B.

Next Tee

Cart Path & Beyond is O.B.

Fence & Beyond is O.B.

Green is O.B.

2

3

Hazard



For the 2016 GCC, this is somewhat similar to Hole 3 (384') of the DiscGolfValue.com course, as shown in gray.

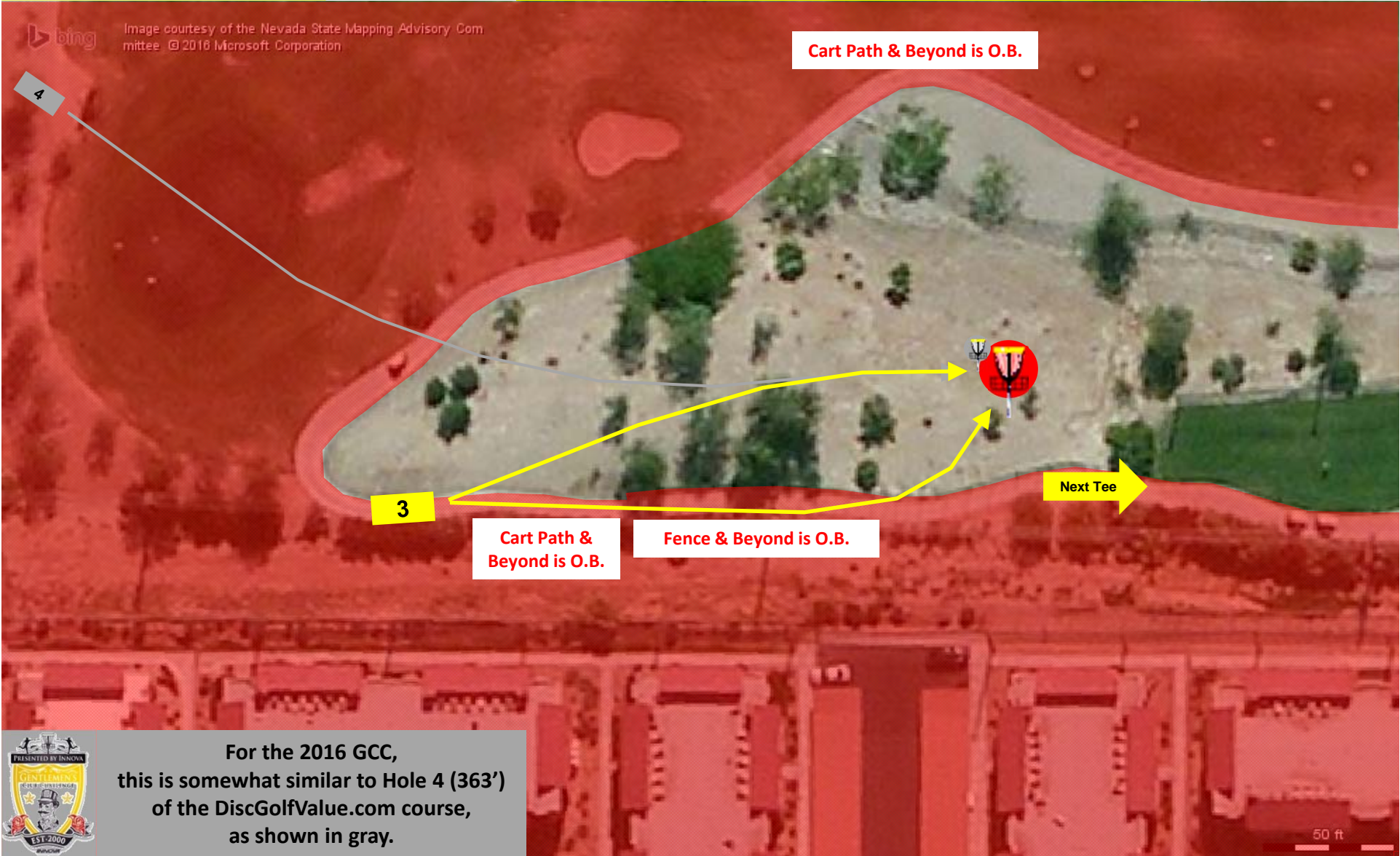


Hole 3
 Distance - 213' Par 3
INNOVA
 DISC GOLF



Your Logo/Information here!

If you would like to sponsor the 2017 GCC, please contact the director at lvdgc@cox.net. Your logo/information will be added to this individual map from now until the prior the 2017 GCC.



Cart Path & Beyond is O.B.

3

Cart Path & Beyond is O.B.

Fence & Beyond is O.B.

Next Tee



For the 2016 GCC, this is somewhat similar to Hole 4 (363') of the DiscGolfValue.com course, as shown in gray.

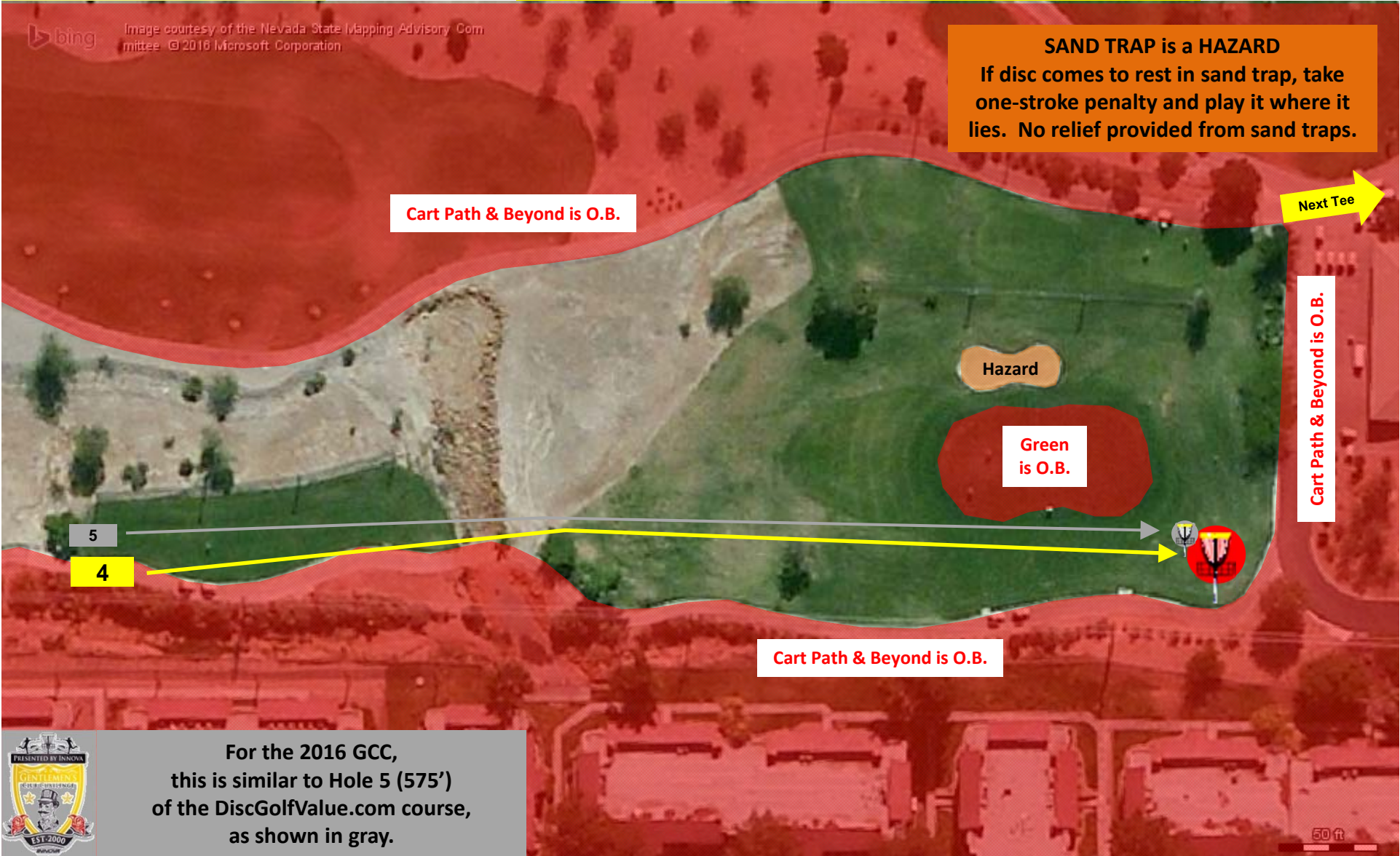
50 ft

Hole 4
 Distance - 564' Par 4
INNOVA
 DISC GOLF



Your Logo/Information here!

If you would like to sponsor the 2017 GCC, please contact the director at lvdgc@cox.net. Your logo/information will be added to this individual map from now until the prior the 2017 GCC.



SAND TRAP is a HAZARD
 If disc comes to rest in sand trap, take one-stroke penalty and play it where it lies. No relief provided from sand traps.

Cart Path & Beyond is O.B.

Next Tee

Cart Path & Beyond is O.B.

Green is O.B.

Cart Path & Beyond is O.B.



For the 2016 GCC, this is similar to Hole 5 (575') of the DiscGolfValue.com course, as shown in gray.

Hole 5
 Distance - 342' Par 3
INNOVA
 DISC GOLF



Your Logo/Information here!

If you would like to sponsor the 2017 GCC, please contact the director at lvdgc@cox.net. Your logo/information will be added to this individual map from now until the prior the 2017 GCC.



For the 2016 GCC, this is similar to Hole 1 (434') of the Innova course, as shown in gray.

Hole 6
 Distance - 426' Par 3
INNOVA
 DISC GOLF



Your Logo/Information here!

If you would like to sponsor the 2017 GCC, please contact the director at lvdgc@cox.net. Your logo/information will be added to this individual map from now until the prior the 2017 GCC.

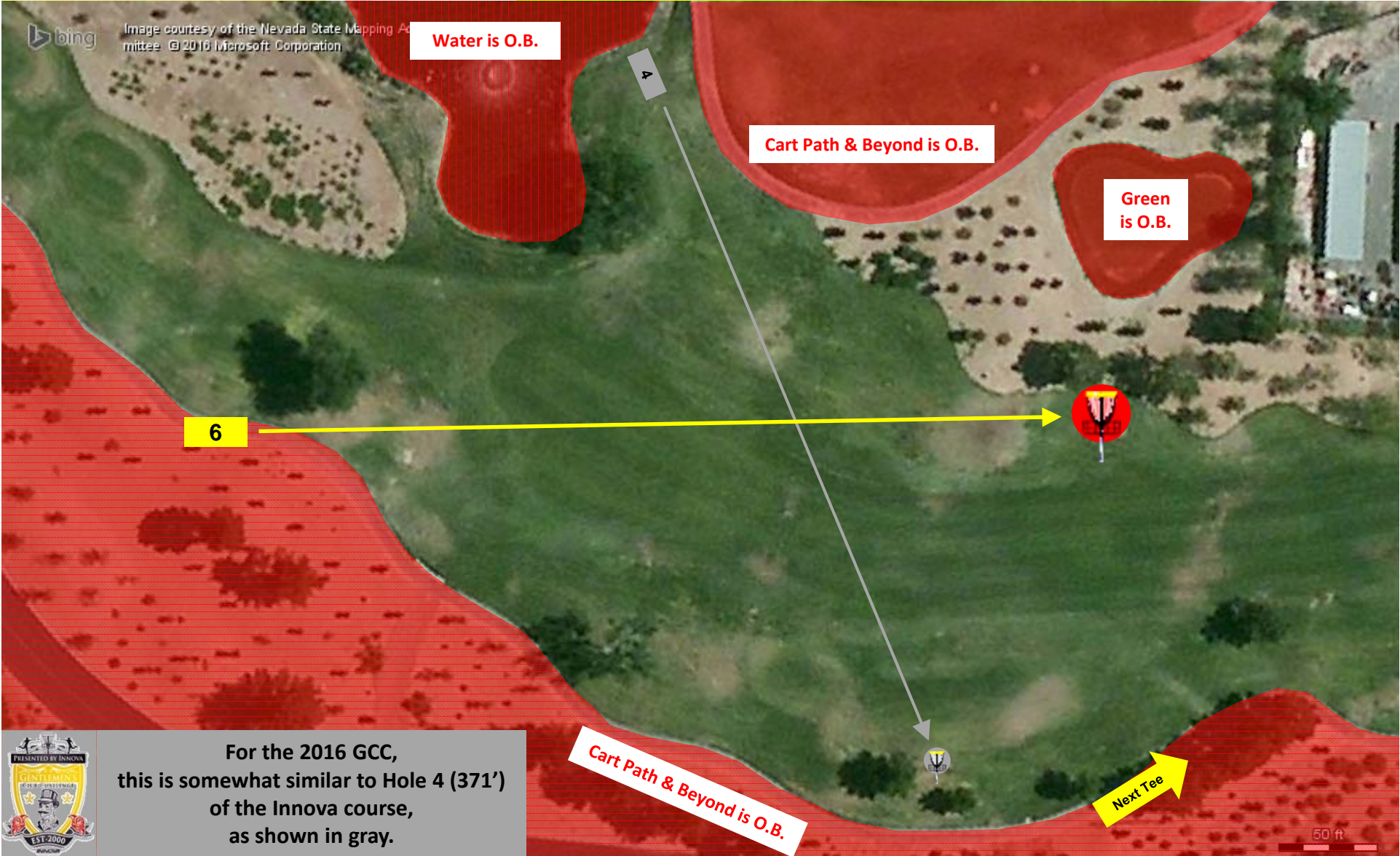


Image courtesy of the Nevada State Mapping Authority @ 2016 Microsoft Corporation

6

Water is O.B.

Cart Path & Beyond is O.B.

Green is O.B.

Cart Path & Beyond is O.B.

Next Tee

50 ft



For the 2016 GCC, this is somewhat similar to Hole 4 (371') of the InnoVA course, as shown in gray.

Hole 7
 Distance - 420' Par 3
INNOVA
 DISC GOLF



Your Logo/Information here!

If you would like to sponsor the 2017 GCC, please contact the director at lvdgc@cox.net. Your logo/information will be added to this individual map from now until the prior the 2017 GCC.



SAND TRAP is a HAZARD
 If disc comes to rest in sand trap, take one-stroke penalty and play it where it lies. No relief provided from sand traps.

Fence & Beyond is O.B.

Green is O.B.

Cart Path & Beyond is O.B.

Driveway & Beyond is O.B.

For the 2016 GCC, this is similar to Hole 5 (454') of the Innova course, as shown in gray.



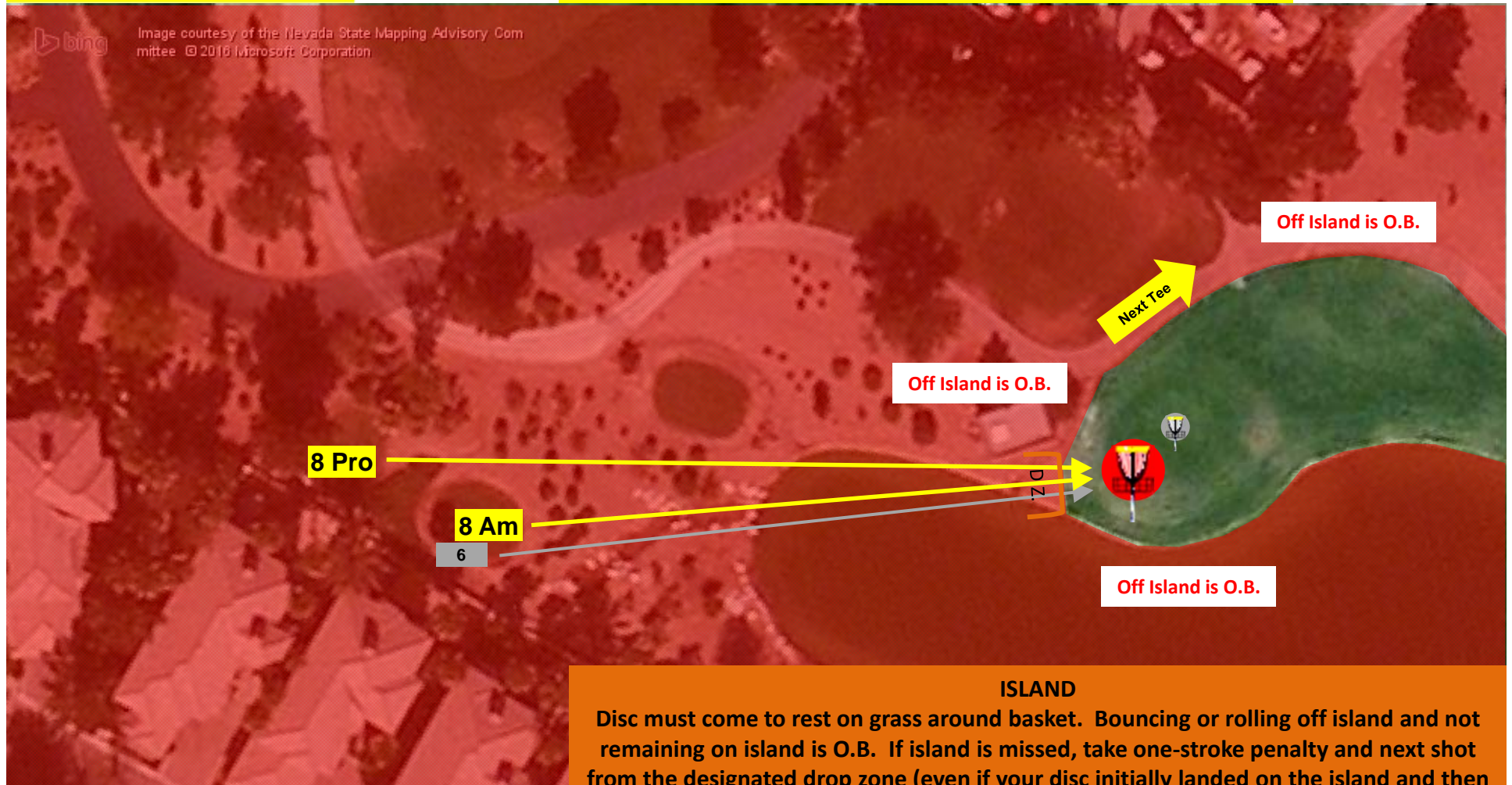
Hole 8

Distance - 276'/231' Par 3



Your Logo/Information here!

If you would like to sponsor the 2017 GCC, please contact the director at lvdgc@cox.net. Your logo/information will be added to this individual map from now until the prior the 2017 GCC.



ISLAND

Disc must come to rest on grass around basket. Bouncing or rolling off island and not remaining on island is O.B. If island is missed, take one-stroke penalty and next shot from the designated drop zone (even if your disc initially landed on the island and then bounced/rolled out). For every additional shot which does not stay on island from drop zone (including bounces or roll-outs), take one-stroke penalty and continue to use the designated drop zone until your disc lands and remains on the grass. Once putting from island (not from drop zone), play O.B. where last in bounds.



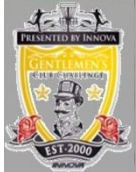
For the 2016 GCC, this is similar to Hole 6 (251') of the Innova course, as shown in gray.

Hole 9
Distance - 465'/331' Par 3




Your Logo/Information here!

If you would like to sponsor the 2017 GCC, please contact the director at lvdgc@cox.net. Your logo/information will be added to this individual map from now until the prior the 2017 GCC.



For the 2016 GCC, this is somewhat similar to Hole 7 (545') of the Innova course, as shown in gray.

Hole 10

Distance - 570' Par 4



Your Logo/Information here!

If you would like to sponsor the 2017 GCC, please contact the director at lvdgc@cox.net. Your logo/information will be added to this individual map from now until the prior the 2017 GCC.



Cart Path & Beyond is O.B.

SAND TRAP is a HAZARD
If disc comes to rest in sand trap, take one-stroke penalty and play it where it lies. No relief provided from sand traps.

10

9

Hazard

Next Tee

Cart Path AFTER BEND & Beyond is O.B.



For the 2016 GCC, this is somewhat similar to Hole 9 (633') of the Innova course, as shown in gray.

50 ft

Hole 11

Distance - 708' Par 4



Your Logo/Information here!

If you would like to sponsor the 2017 GCC, please contact the director at lvdgc@cox.net. Your logo/information will be added to this individual map from now until the prior the 2017 GCC.



For the 2016 GCC, this is somewhat similar to Hole 10 (691') of the InnoVA course, as shown in gray.

SAND TRAP is a HAZARD
If disc comes to rest in sand trap, take one-stroke penalty and play it where it lies. No relief provided from sand traps.

Hole 12

Distance - 366' Par 3

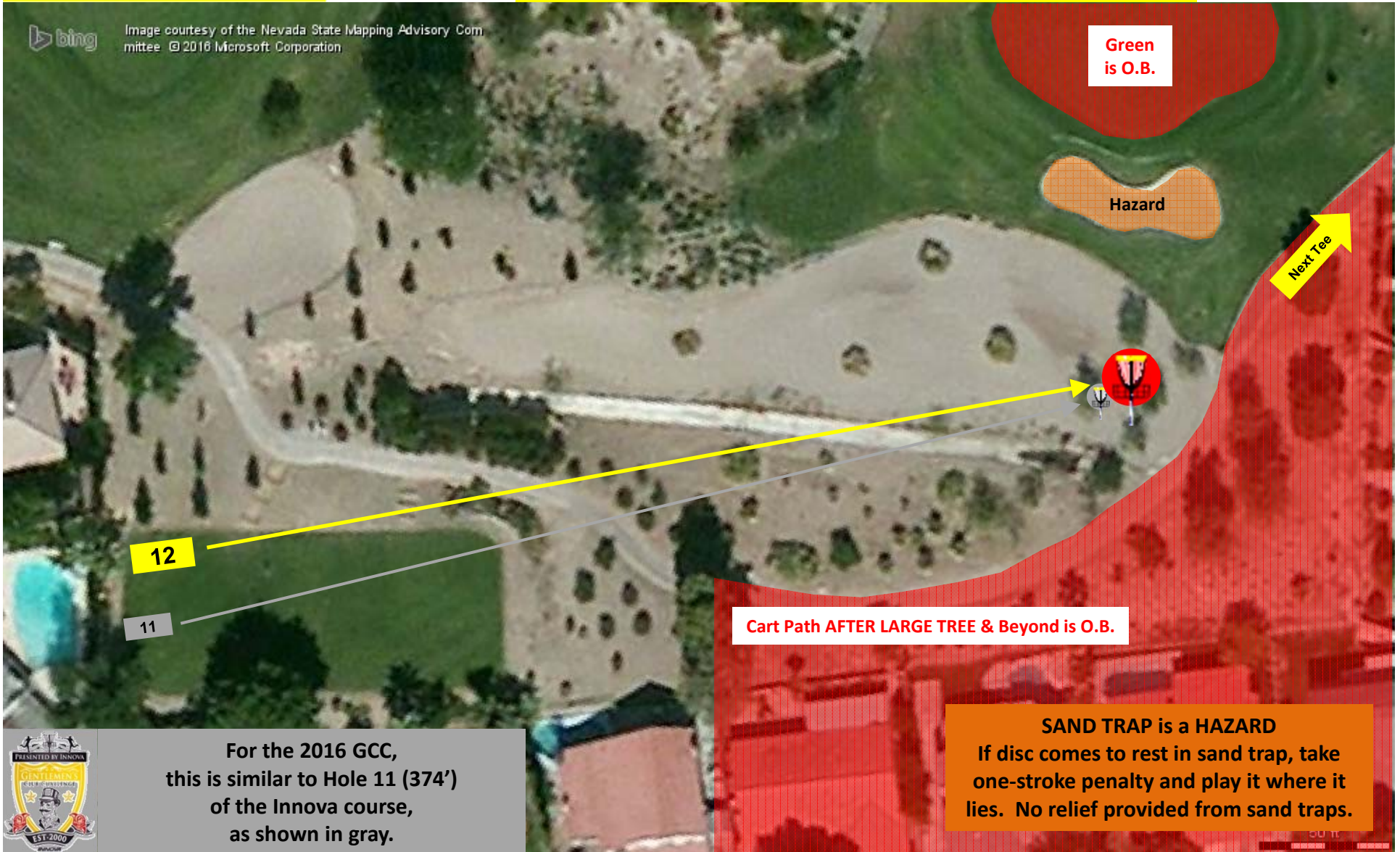


Your Logo/Information here!

If you would like to sponsor the 2017 GCC, please contact the director at lvdgc@cox.net. Your logo/information will be added to this individual map from now until the prior the 2017 GCC.



Image courtesy of the Nevada State Mapping Advisory Committee © 2016 Microsoft Corporation



Green is O.B.

Hazard

Next Tee

12

11

Cart Path AFTER LARGE TREE & Beyond is O.B.

SAND TRAP is a HAZARD
If disc comes to rest in sand trap, take one-stroke penalty and play it where it lies. No relief provided from sand traps.



For the 2016 GCC, this is similar to Hole 11 (374') of the Innova course, as shown in gray.

Hole 13

Distance - 555' Par 4



Your Logo/Information here!

If you would like to sponsor the 2017 GCC, please contact the director at lvdgc@cox.net. Your logo/information will be added to this individual map from now until the prior the 2017 GCC.

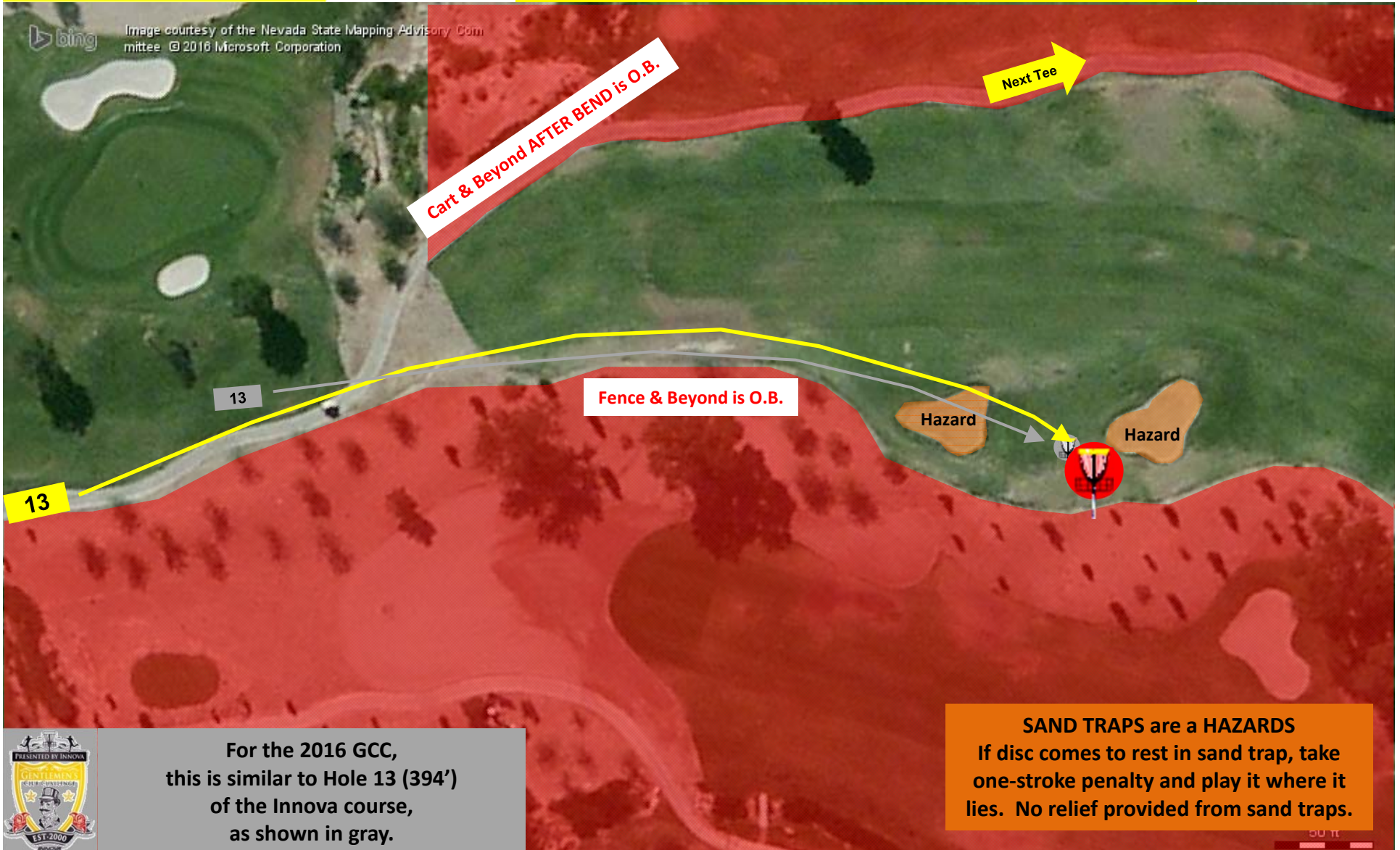


Image courtesy of the Nevada State Mapping Advisory Committee © 2016 Microsoft Corporation

13

13

Cart & Beyond AFTER BEND is O.B.

Fence & Beyond is O.B.

Next Tee

Hazard

Hazard



For the 2016 GCC, this is similar to Hole 13 (394') of the Innova course, as shown in gray.

SAND TRAPS are a HAZARDS
If disc comes to rest in sand trap, take one-stroke penalty and play it where it lies. No relief provided from sand traps.



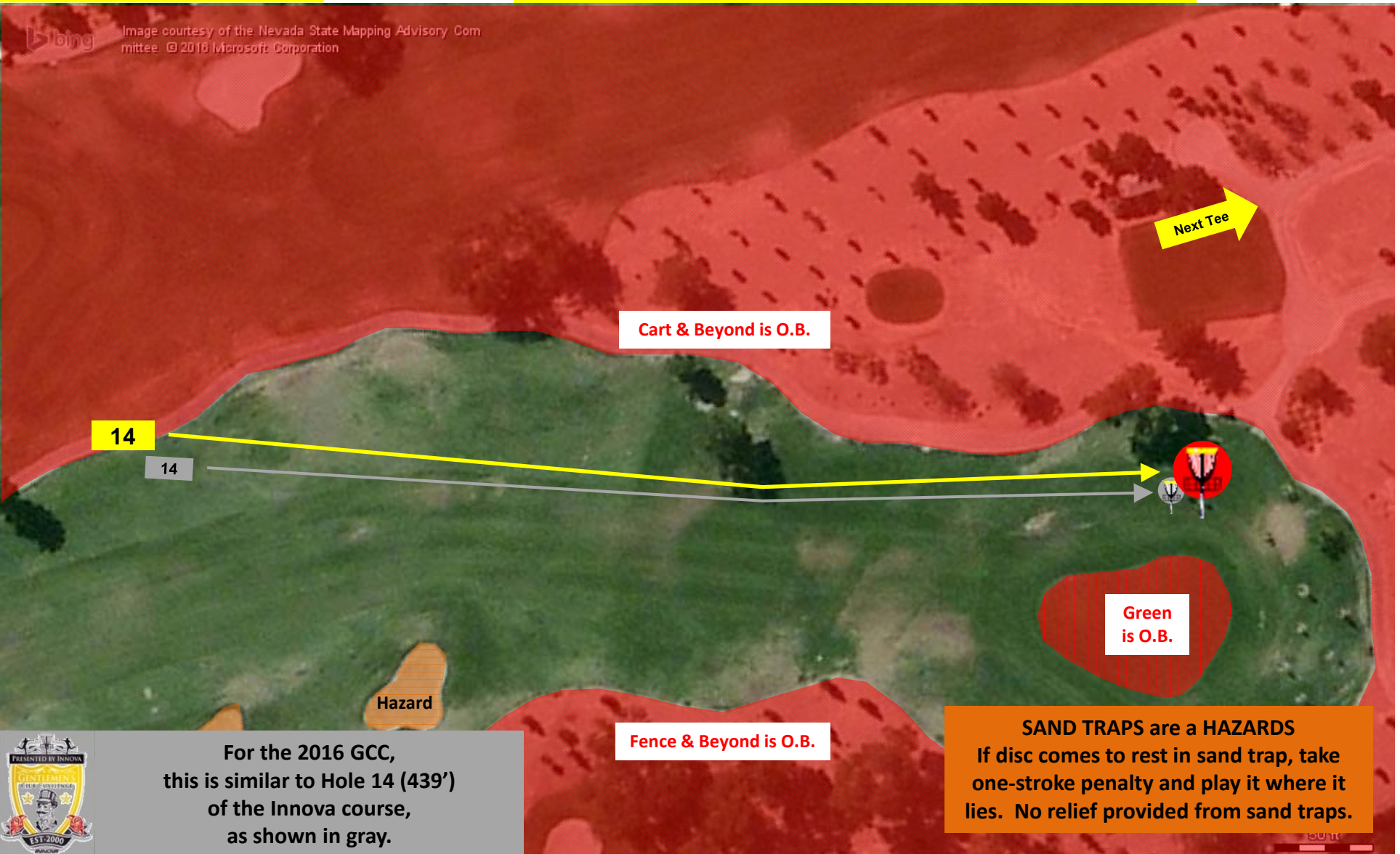
Hole 14

Distance - 489' Par 3



Your Logo/Information here!

If you would like to sponsor the 2017 GCC, please contact the director at lvdgc@cox.net. Your logo/information will be added to this individual map from now until the prior the 2017 GCC.



For the 2016 GCC, this is similar to Hole 14 (439') of the Innova course, as shown in gray.

Hole 15

Distance - 378' Par 3



Your Logo/Information here!

If you would like to sponsor the 2017 GCC, please contact the director at lvdgc@cox.net. Your logo/information will be added to this individual map from now until the prior the 2017 GCC.



For the 2016 GCC, this is somewhat similar to Hole 15 (417') of the Innova course, as shown in gray.

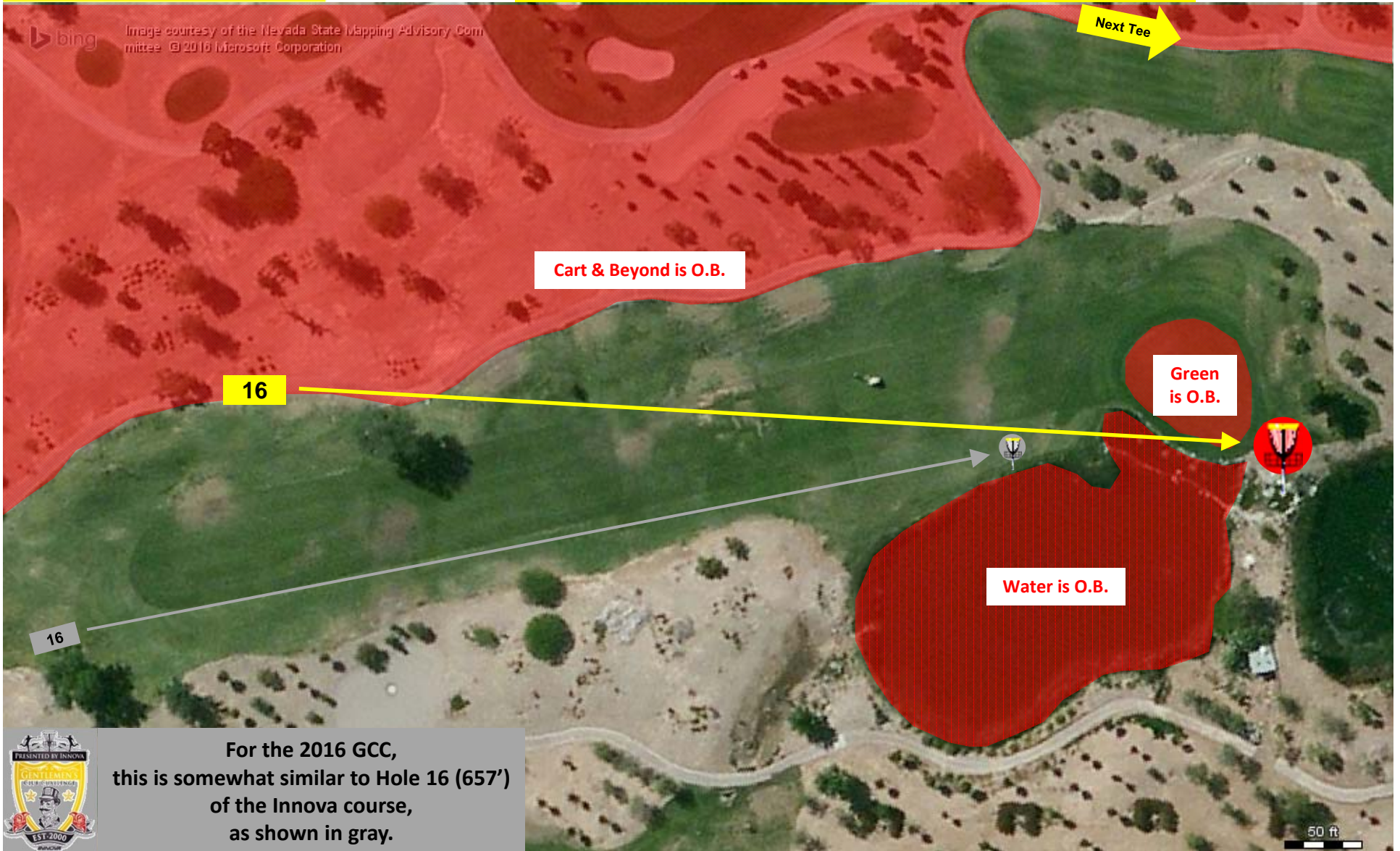
Hole 16

Distance - 675' Par 4



Your Logo/Information here!

If you would like to sponsor the 2017 GCC, please contact the director at lvdgc@cox.net. Your logo/information will be added to this individual map from now until the prior the 2017 GCC.



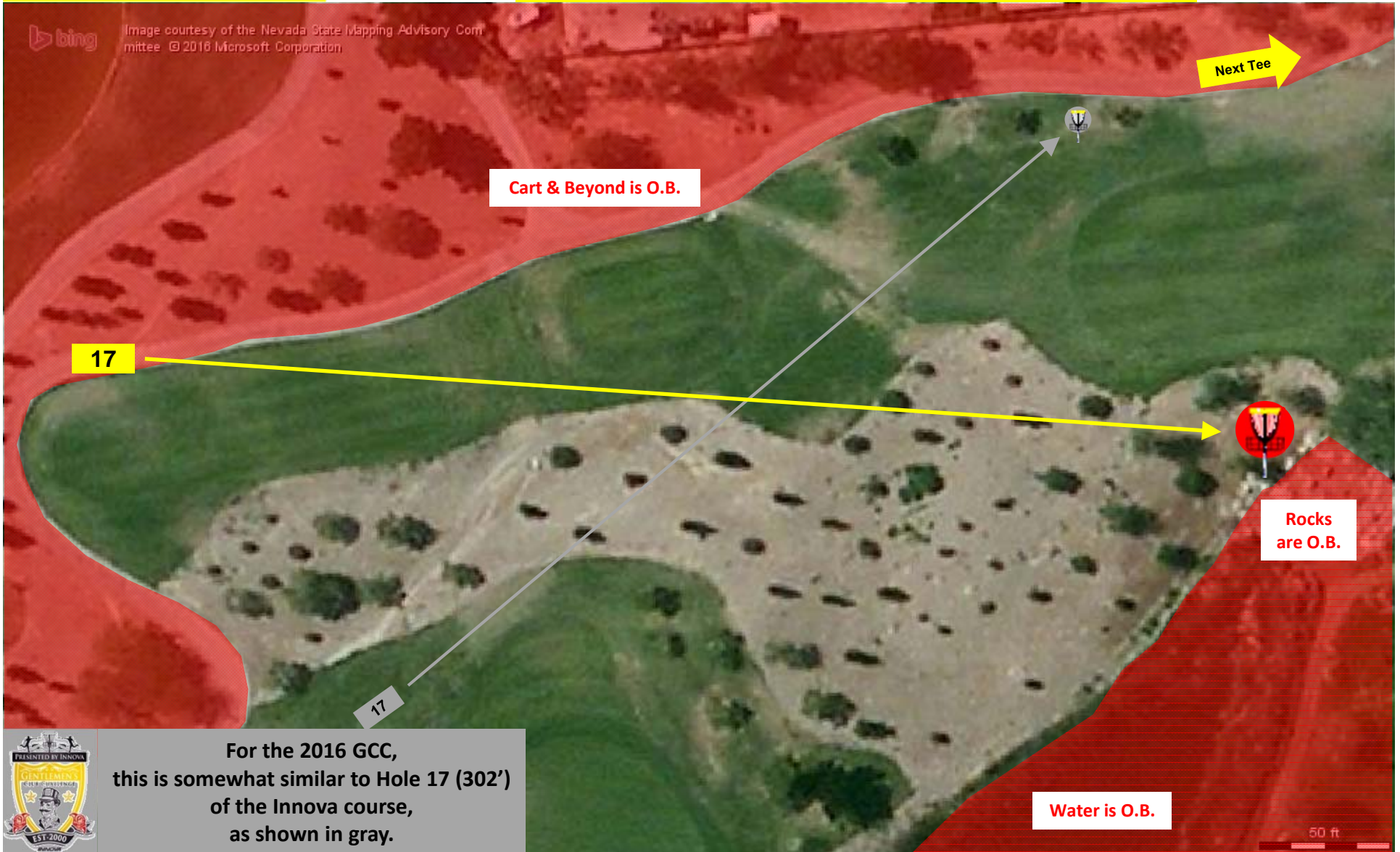
Hole 17

Distance - 399' Par 3



Your Logo/Information here!

If you would like to sponsor the 2017 GCC, please contact the director at lvdgc@cox.net. Your logo/information will be added to this individual map from now until the prior the 2017 GCC.



For the 2016 GCC, this is somewhat similar to Hole 17 (302') of the Innova course, as shown in gray.



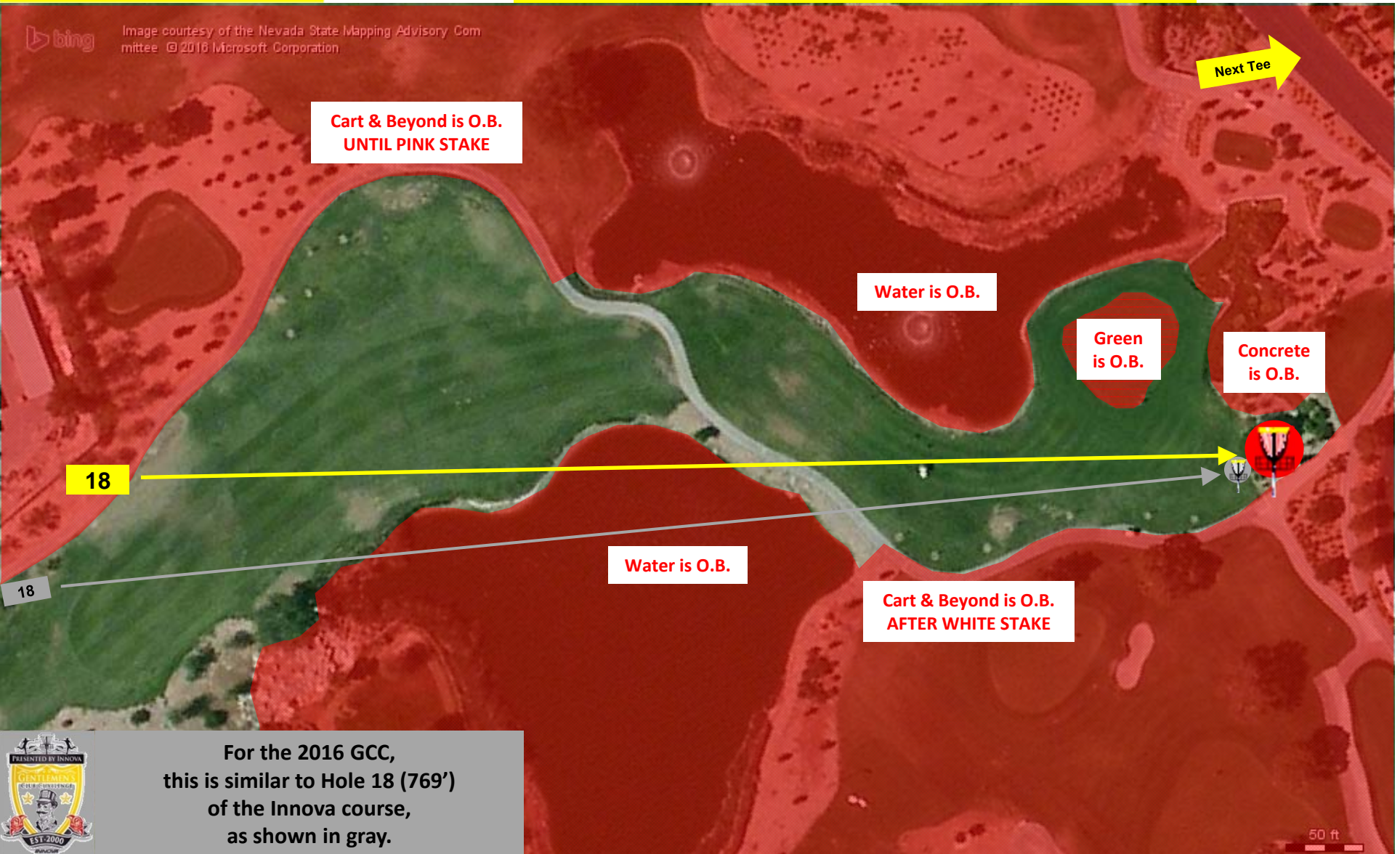
Hole 18

Distance - 703' Par 5



Your Logo/Information here!

If you would like to sponsor the 2017 GCC, please contact the director at lvdgc@cox.net. Your logo/information will be added to this individual map from now until the prior the 2017 GCC.



For the 2016 GCC, this is similar to Hole 18 (769') of the Innova course, as shown in gray.